



**State Game Commission Briefing**

**Habitat Stamp Program  
Reauthorization Discussion**

**September 24, 2009**

**by**

**Dale Hall, Habitat Stamp Program Manager  
NM Dept. Game and Fish**



# What is the Habitat Stamp Program?

- A habitat management process authorized under the federal *Sikes Act* ,
- A funding vehicle for wildlife habitat work,
- A forum for inter-agency coordination and collaboration, and
- An agency **AND** citizen partnership



# HSP Partners





# HSP Mission

- Who** HSP cooperators are
- What** to provide ecologically diverse wildlife and fish habitats
- Where** on USFS and BLM managed lands,
- How** by involving the public in an effective, cost efficient, honest, and cooperative management process
- Why** for enjoyment and use by the current and future generations of New Mexicans.



# HSP History

- Began with pilot at Valle Vidal in 1986.
- Progressive implementation until State Game Commission adopted it statewide in 1991.
- Provided \$15.4 million to habitat work with another \$14 million in federal agency match.
- Since 1999, volunteers contributed \$2 million.



# Inauguration



# 23-year HSP Accomplishments

● Vegetation treatments	624,000 ac.
● Riparian Improvement	11,000 ac.
● Water Developments	708
● Pop./Habitat Surveys	702
● Fisheries Improvement	79
● Transplants	17
● Maintenance actions	6,800



# HSP Sunsetting Provision

- About every 10 years by SGC
- Last renewed on June 4, 1999
- Program sunsets April 2011
- Regulation 19-34-6



# Renewal Strategy

- Closely involve SGC
  - At commission meetings
  - Via a public communication plan
- Modernize Program Goals and Operation
  - Instill competition,
  - Increased collaborative planning at landscape level, and
  - Emphasize aquatic and angling resources

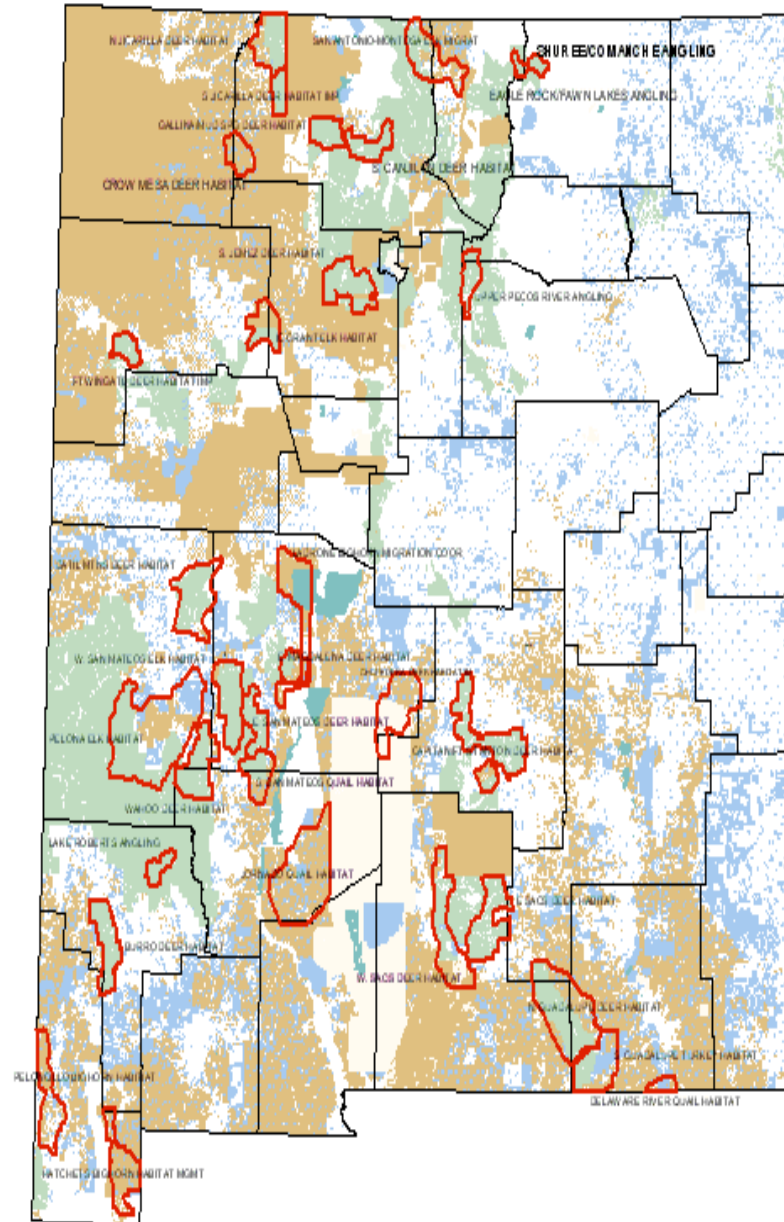


# HSP Funding Formula

- Regional percentages based on circa 1990 sporting use and amount of federal lands:
  - 18.6% Central
  - 14.4% Northwest
  - 22.4% Northeast
  - 24.8% Southeast
  - 19.8% Southwest
- Each federal agency is guaranteed 35% of the region's allocation



# HSP Emphasis landscapes





# Landscape Planning Benefits

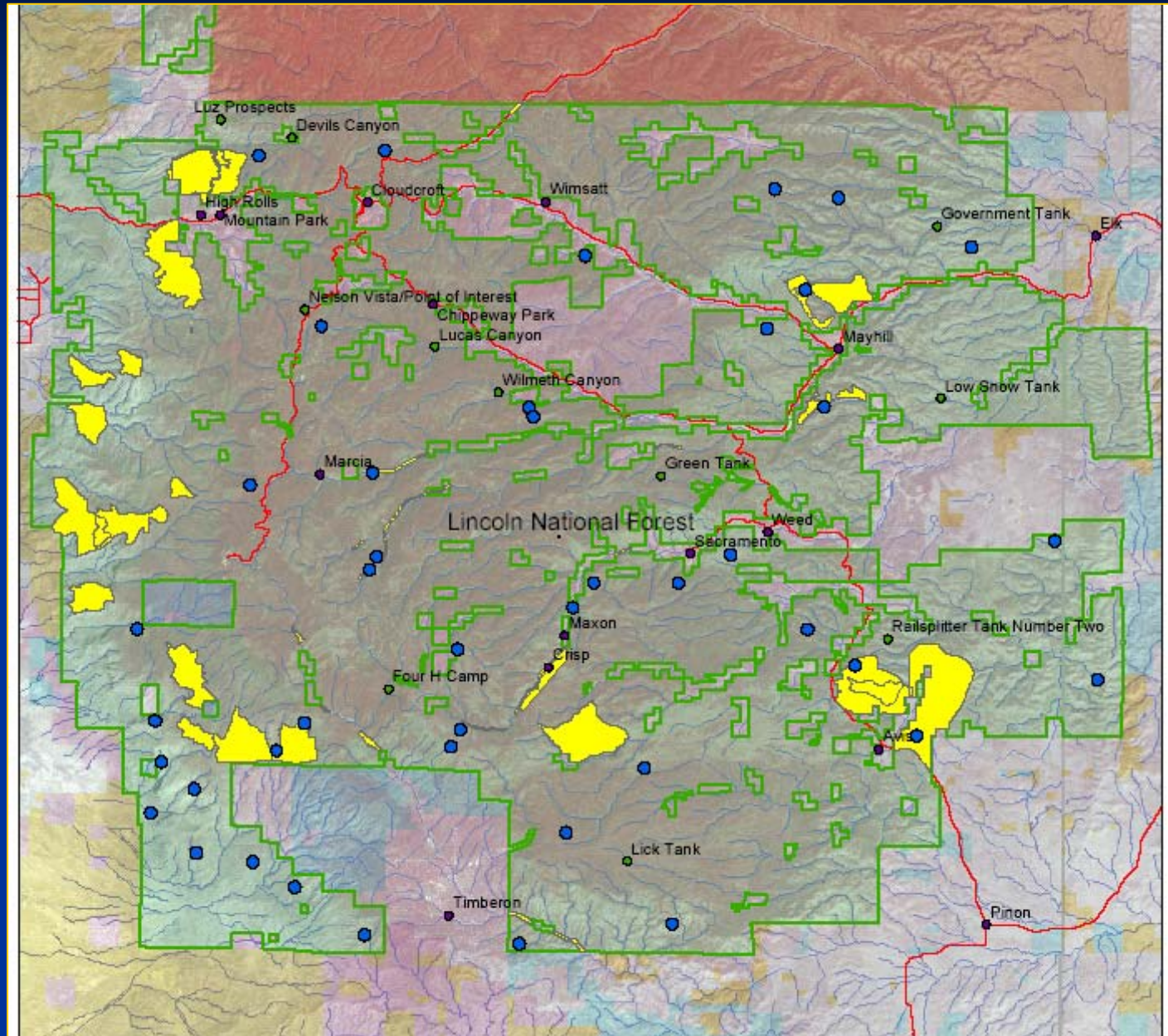
- Connect the HSP with the *Comprehensive Wildlife Conservation Strategy*
- More agency administrative support/oversight
- Streamlined NEPA management
- Improved ability to communicate the whole picture to citizens
- Attracts other funding sources



# HSP Projects: Sacramento Mtns

Landscape  
scale planning  
allows us to  
identify  
limiting  
habitat  
factors...

...and then  
**DO**  
something  
about it!





# Pelona-Luera Landscape in GMU 16E

- SLO; L/Os; State Forestry; SWCD; BLM; NGOs
- G&F contributed \$100,000
- Matched by another \$435,000
- Treat 180,000 acres in 3 years

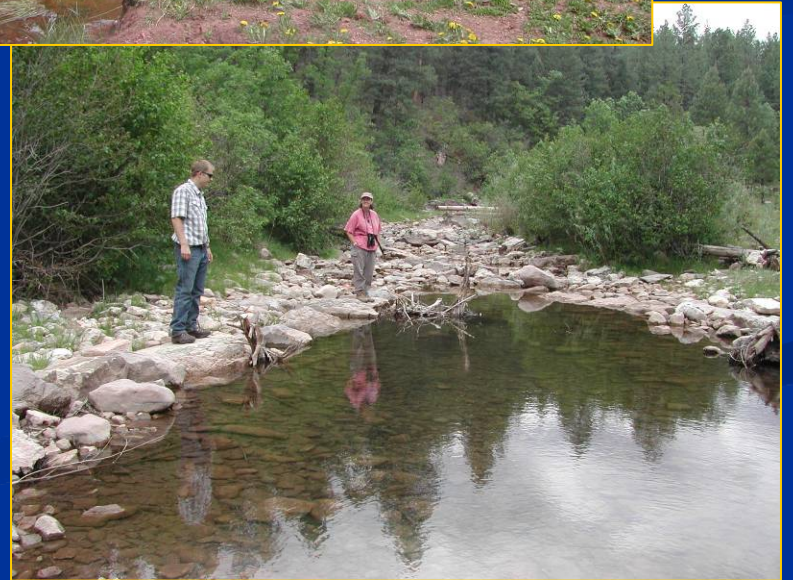


# Burro Mtn. Landscape near Silver City

- SWCD; L/Os; Env. Dep 319; NGOs
- G&F contributed \$300,000
- Matched another \$640,000
- Treated 50,000 acres, 200 erosion structures; and 15 water developments



# Angling Emphasis





# Communication Plan for Public Outreach

- State Game Commission meetings
- HSP article in summer issue of *New Mexico Wildlife* newspaper insert
- HSP poster and easels to be mailed to 300 vendors
- 4-part tv show about HSP activities in process
- 5 regional Citizen Advisory Committee meetings
- HSP fact sheet mailed for Federal agency use
- website, emails, club meetings

**We seek your....**

- **Comments and**
- **Advice**

