

New Mexico Pronghorn Management



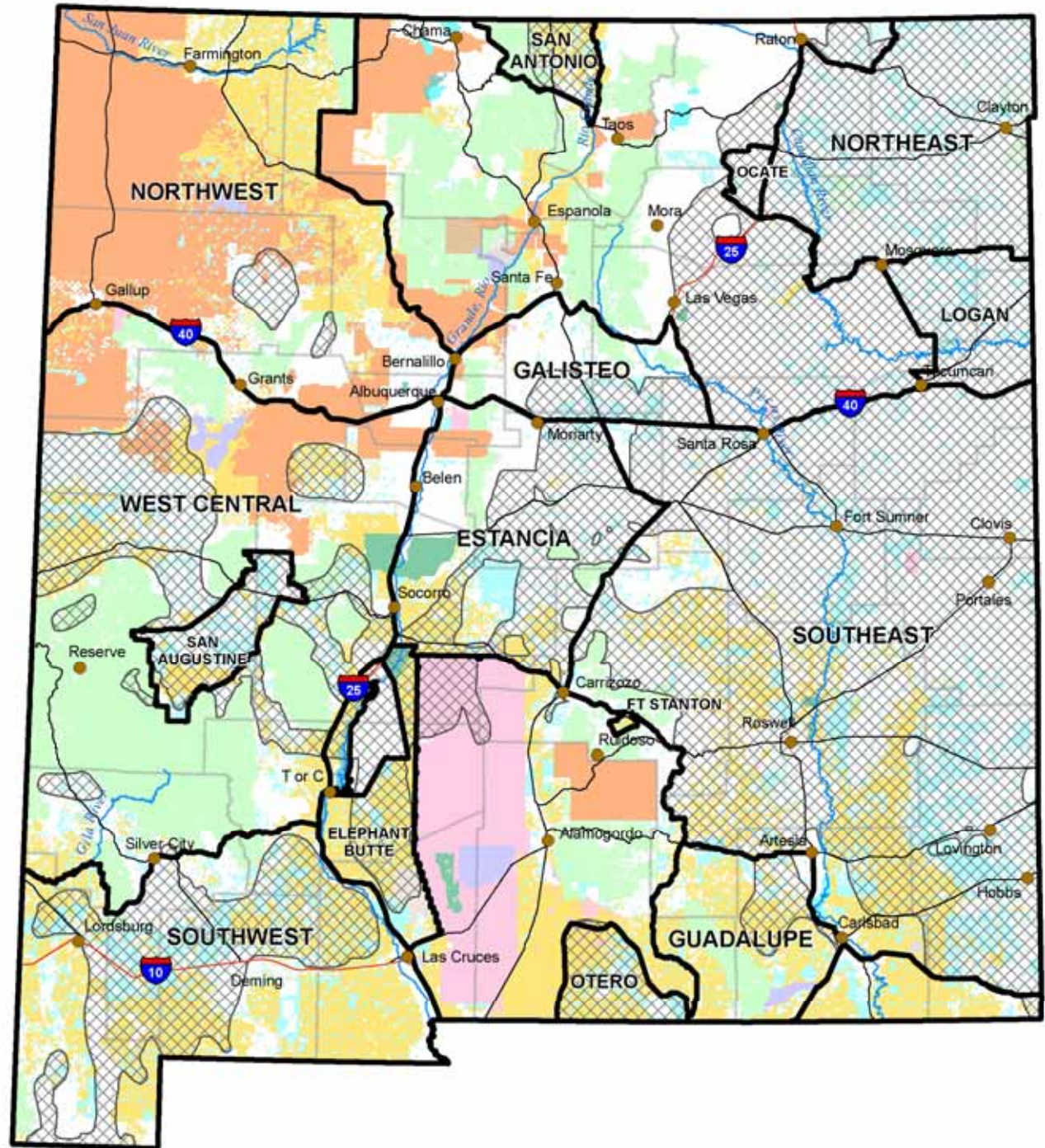
Pronghorn Antelope Regions

- Identified regions of New Mexico with similar land ownership and pronghorn populations
- Within each region identify core occupied antelope range (COAR).
- Allocate hunting opportunity based on land ownership within each COAR

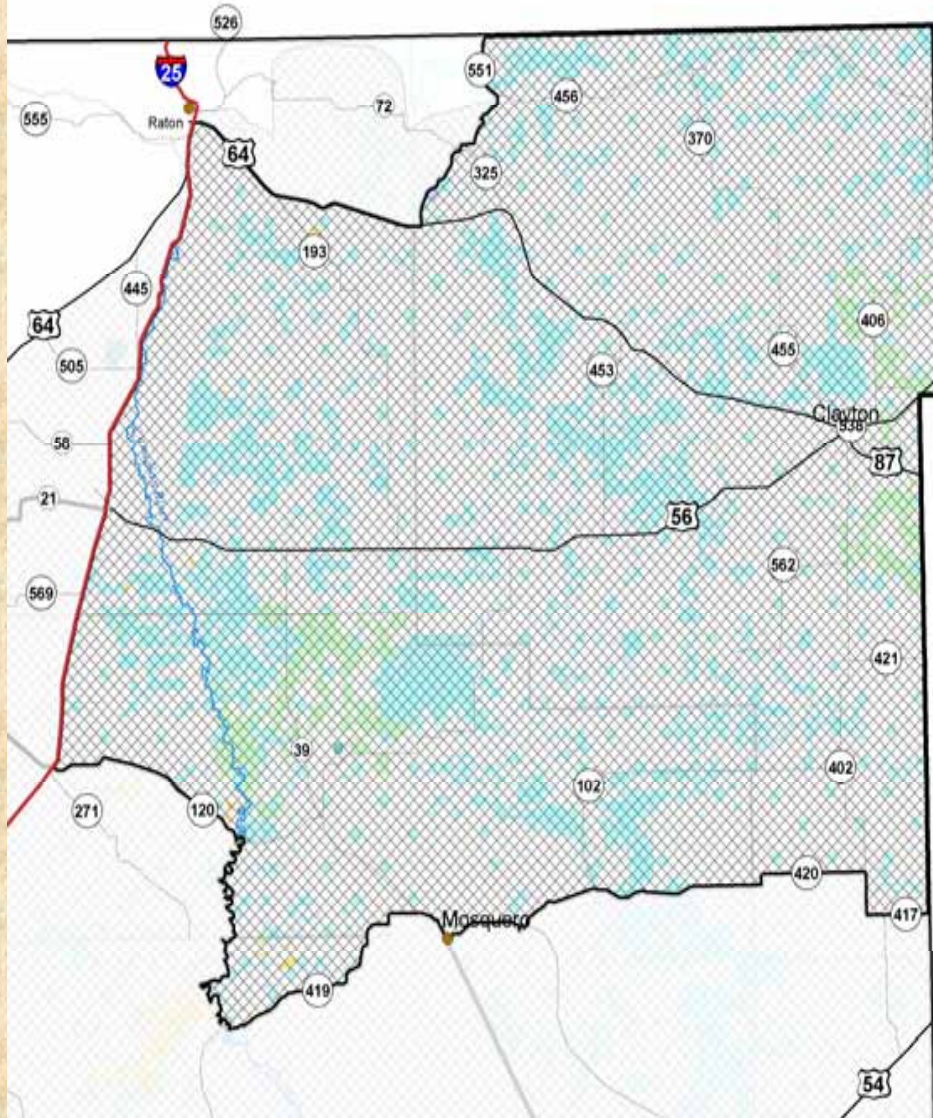
Hunting opportunities with in each region

- **Public draw licenses will be valid on :**
 - any legally accessible public land
 - private land with written permission, or by coupon redemption through Open Gate access program
 - and any private land that has chosen the region wide option
- **Private land allocation:**
 - **Ranch Only:** Licenses will be valid only on deeded private property.
 - Can choose up to 5 consecutive days to hunt from September 1-October 31 with any legal sporting arm
 - Can choose up to 10 consecutive days to hunt from August 1 –August 31 with Bow and Arrow
 - **Region Wide:**
 - Valid on any public land and other region wide ranches within the region.
 - Ranch open to all legally licensed antelope hunters.
 - Must choose from hunt codes published in Big Game Rules and Information booklet
 - No more than 20% of allocated authorizations can be converted during any one (1) hunt code.
 - Ranches choosing this option will receive one authorization that allows for the subsequent license to be free, no license fee charged upon conversion of the authorization to license.

Pronghorn regions



North East region



- Population estimate = 6000-8000
- Sustainable harvest:
buck = 375
doe = 33
- Licenses:
mature buck = 383
female-immature = 37
mature buck bow = 100
- Land ownership of COAR:
23% public land
77% private land

North East region hunt structure

- Public draw opportunities

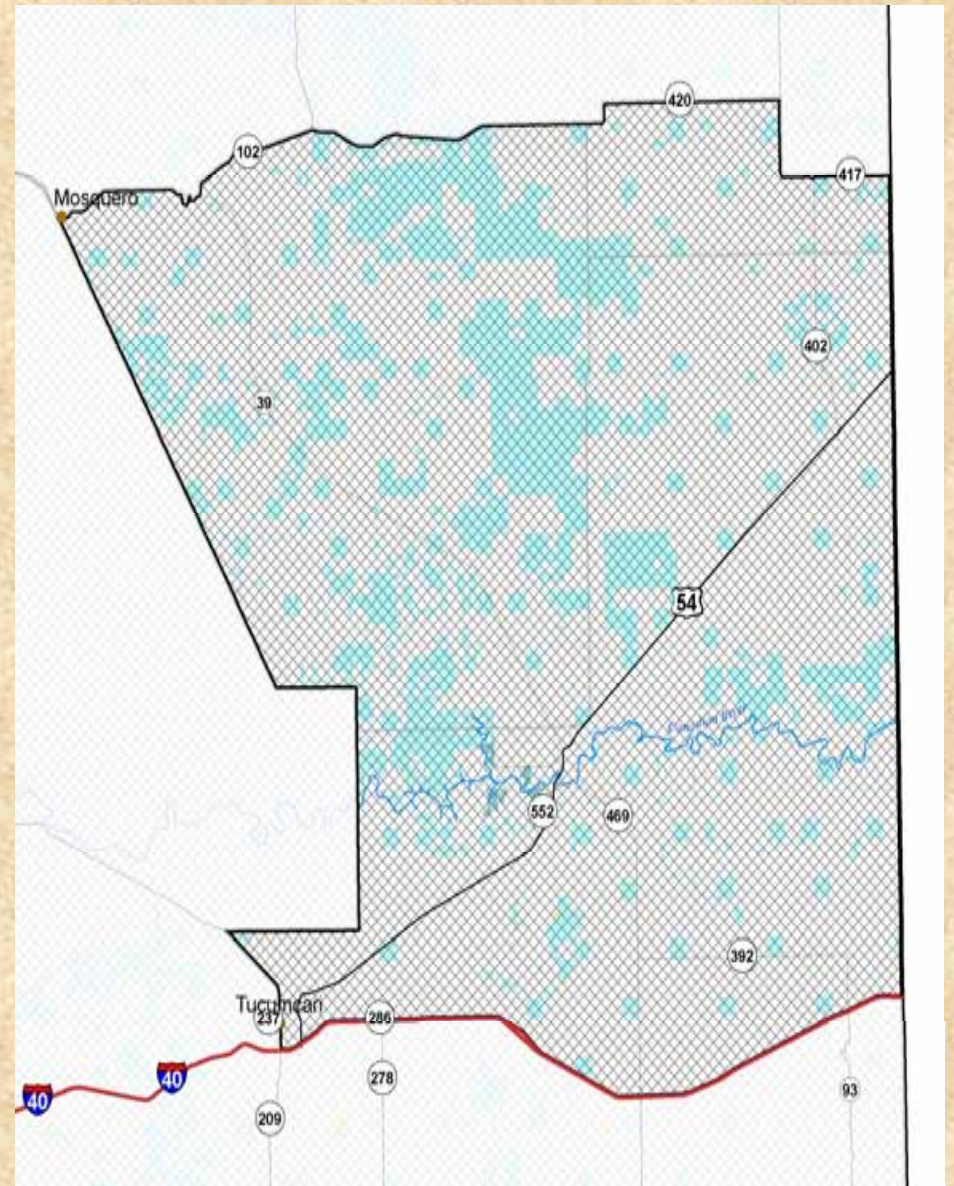
2009-2010 hunt seasons		2010-2011 hunt seasons		hunt code	licenses	bag limit
hunt start	hunt end	hunt start	hunt end			
8/1/2009	8/9/2009	7/31/2010	8/8/2010	ANT-2-106	23	MB
8//29/2009	9/2/2009	8/28/2010	9/1/2010	ANT-1-116	22	MB
9/5/2009	9/9/2009	9/4/2010	9/8/2010	ANT-1-117	22	MB
9/12/2009	9/16/2009	9/11/2010	9/15/2010	ANT-1-118	22	MB
9/19/2009	9/23/2009	9/18/2010	9/22/2010	ANT-1-119	22	MB
10/3/2009	10/7/2009	10/2/2010	10/6/2010	ANT-1-121	8	F-IM

- Private land authorizations to qualified ranches

2009-2010 hunt seasons				2010-2011 hunt seasons			
buck	doe	bow only	total	buck	doe	bow only	total
295	29	77	401	295	29	77	401

Logan Region

- Population estimate =
4000-6000
- Sustainable harvest:
buck = 277
doe = 27
- Licenses:
mature buck = 308
female-immature = 30
- Land ownership of COAR:
21% public land
79% private land



Logan Region Hunt structure

- Public draw opportunities

2009-2010 hunt seasons		2010-2011 hunt seasons		hunt code	licenses	bag limit
hunt start	hunt end	hunt start	hunt end			
9/5/2009	9/9/2009	9/4/2010	9/8/2010	ANT-1-124	32	MB
9/12/2009	9/16/2009	9/11/2010	9/15/2010	ANT-1-125	32	MB
10/3/2009	10/7/2009	10/2/2010	10/6/2010	ANT-1-126	6	F-IM

- Private land authorizations to qualified ranches

2009-2010 hunt seasons				2010-2011 hunt seasons			
buck	doe	bow only	total	buck	doe	bow only	total
244	24	0	268	244	24	0	268

South East Region Hunt structure

- Public draw opportunities

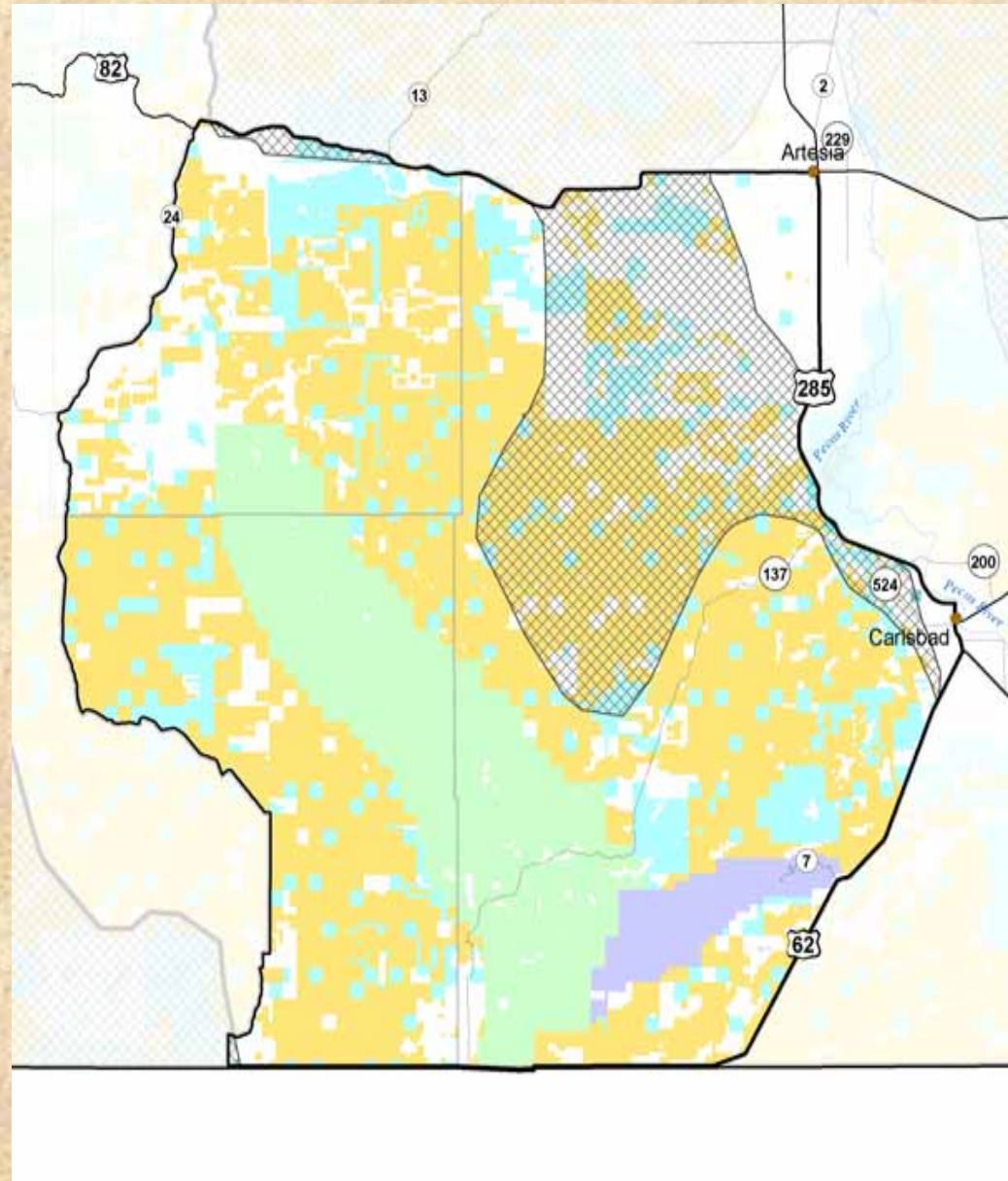
2009-2010 hunt seasons		2010-2011 hunt seasons		hunt code	licenses	bag limit
hunt start	hunt end	hunt start	hunt end			
8/1/2009	8/9/2009	7/31/2010	8/8/2010	ANT-2-108	26	MB
8//29/2009	9/2/2009	8/28/2010	9/1/2010	ANT-1-116	83	MB
9/5/2009	9/9/2009	9/4/2010	9/8/2010	ANT-1-117	83	MB
9/12/2009	9/16/2009	9/11/2010	9/15/2010	ANT-1-118	83	MB
9/19/2009	9/23/2009	9/18/2010	9/22/2010	ANT-1-119	83	MB
9/26/2009	9/30/2009	9/25/2010	9/29/2010	ANT-1-120	83	MB
10/3/2009	10/7/2009	10/2/2010	10/6/2010	ANT-1-121	22	F-IM
10/10/2009	10/14/2009	10/9/2010	10/13/2010	ANT-1-122	23	F-IM

- Private land authorizations to qualified ranches

2009-2010 hunt seasons				2010-2011 hunt seasons			
buck	doe	bow only	total	buck	doe	bow only	total
877	95	54	1026	877	95	54	1026

Guadalupe bow only region

- Population estimate =
90-200
- Sustainable harvest:
buck = 6
doe = 0
- Licenses:
mature buck bow = 20
- Land ownership of
COAR:
63% public land
37% private land



Guadalupe Region Hunt structure

- Public draw opportunities

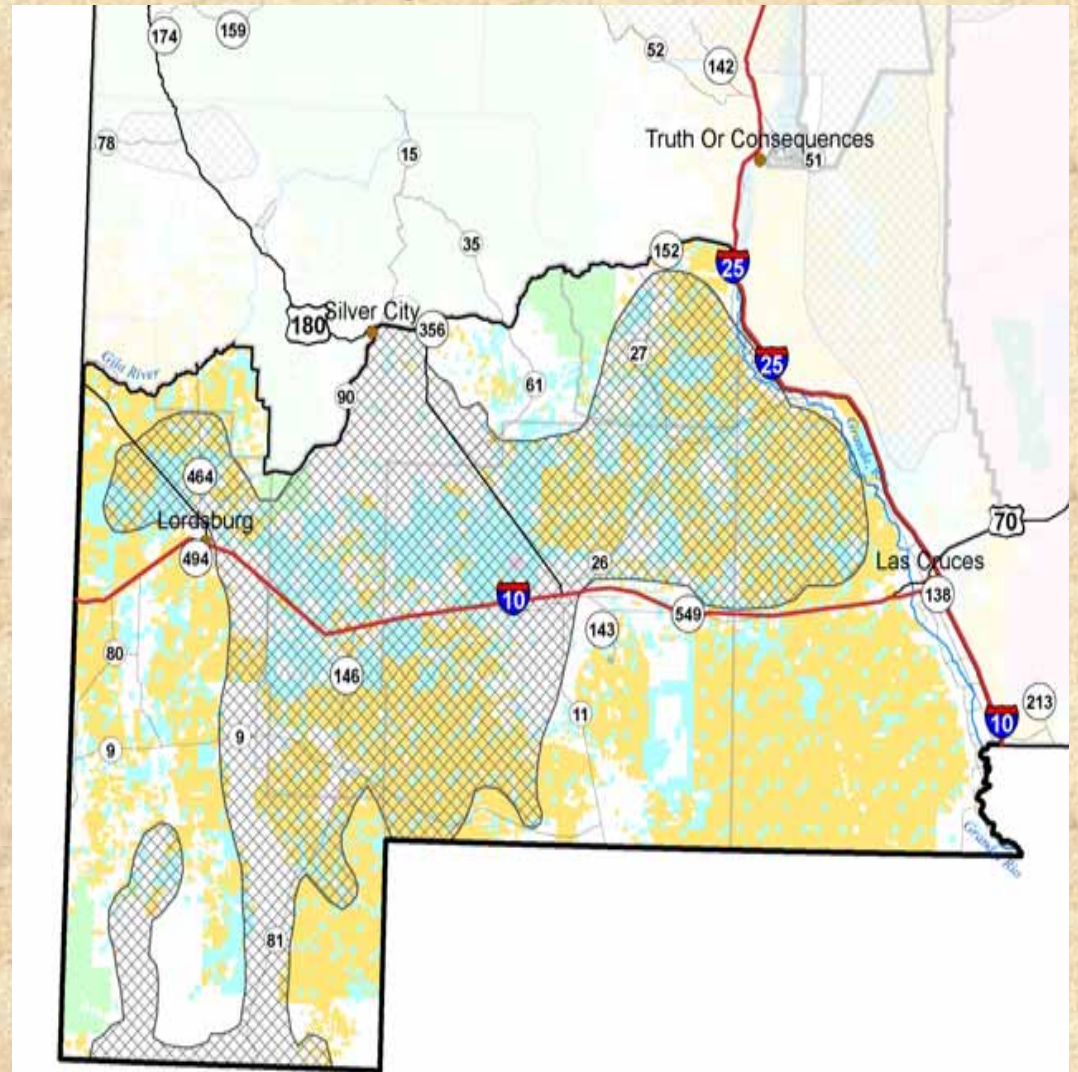
2009-2010 hunt seasons		2010-2011 hunt seasons		hunt code	licenses	bag limit
hunt start	hunt end	hunt start	hunt end			
8/1/2009	8/9/2009	7/31/2010	8/8/2010	ANT-2-110	3	MB
8/1/2009	8/9/2009	7/31/2010	8/8/2010	ANT-2-111	1	F-IM

- Private land authorizations to qualified ranches

2009-2010 hunt seasons			2010-2011 hunt seasons		
buck	doe	total	buck	doe	total
2	1	3	2	1	3

South West region

- Population estimate = 1000-1400
- Sustainable harvest: buck = 49
- Licenses:
 - mature buck = 46
 - mature buck bow = 25
- Land ownership of COAR:
 - 63% public land
 - 37% private land



South West Region Hunt structure

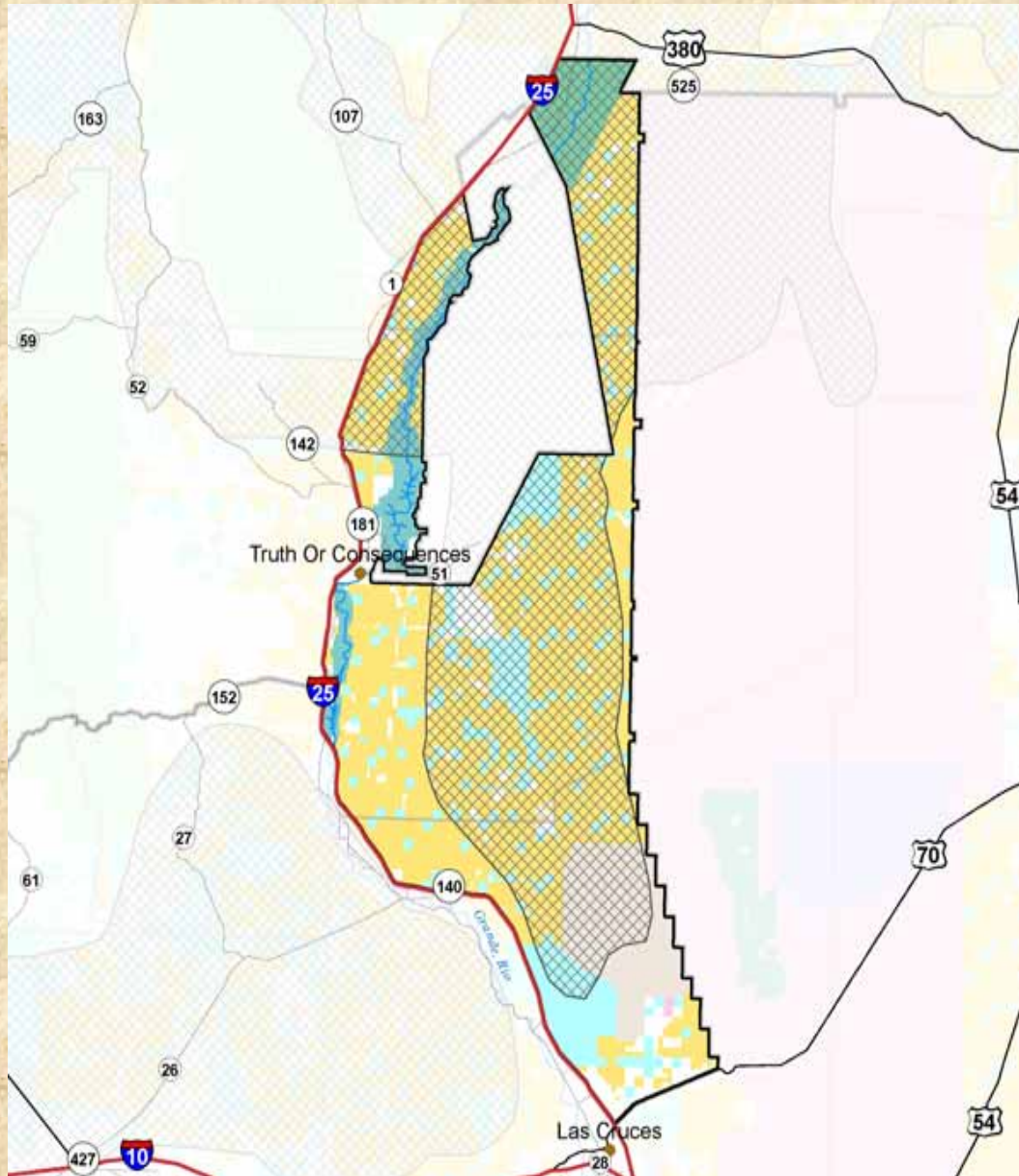
- Public draw opportunities

2009-2010 hunt seasons		2010-2011 hunt seasons		hunt code	licenses	bag limit
hunt start	hunt end	hunt start	hunt end			
8/1/2009	8/9/2009	7/31/2010	8/8/2010	ANT-2-100	16	MB
8/29/2009	9/2/2009	8/28/2010	9/1/2010	ANT-1-100	14	MB
9/5/2009	9/9/2009	9/4/2010	9/8/2010	ANT-1-101	15	MB

- Private land authorizations to qualified ranches

2009-2010 hunt seasons				2010-2011 hunt seasons			
buck	doe	bow only	total	buck	doe	bow only	total
17	0	9	26	17	0	9	26

Elephant Butte region



- Population estimate = 500-700
- Sustainable harvest:
buck = 33
- Licenses:
mature buck = 36
mature buck bow = 2
- Land ownership of COAR:
95% public land
5% private land

Elephant Butte Region Hunt structure

- Public draw opportunities

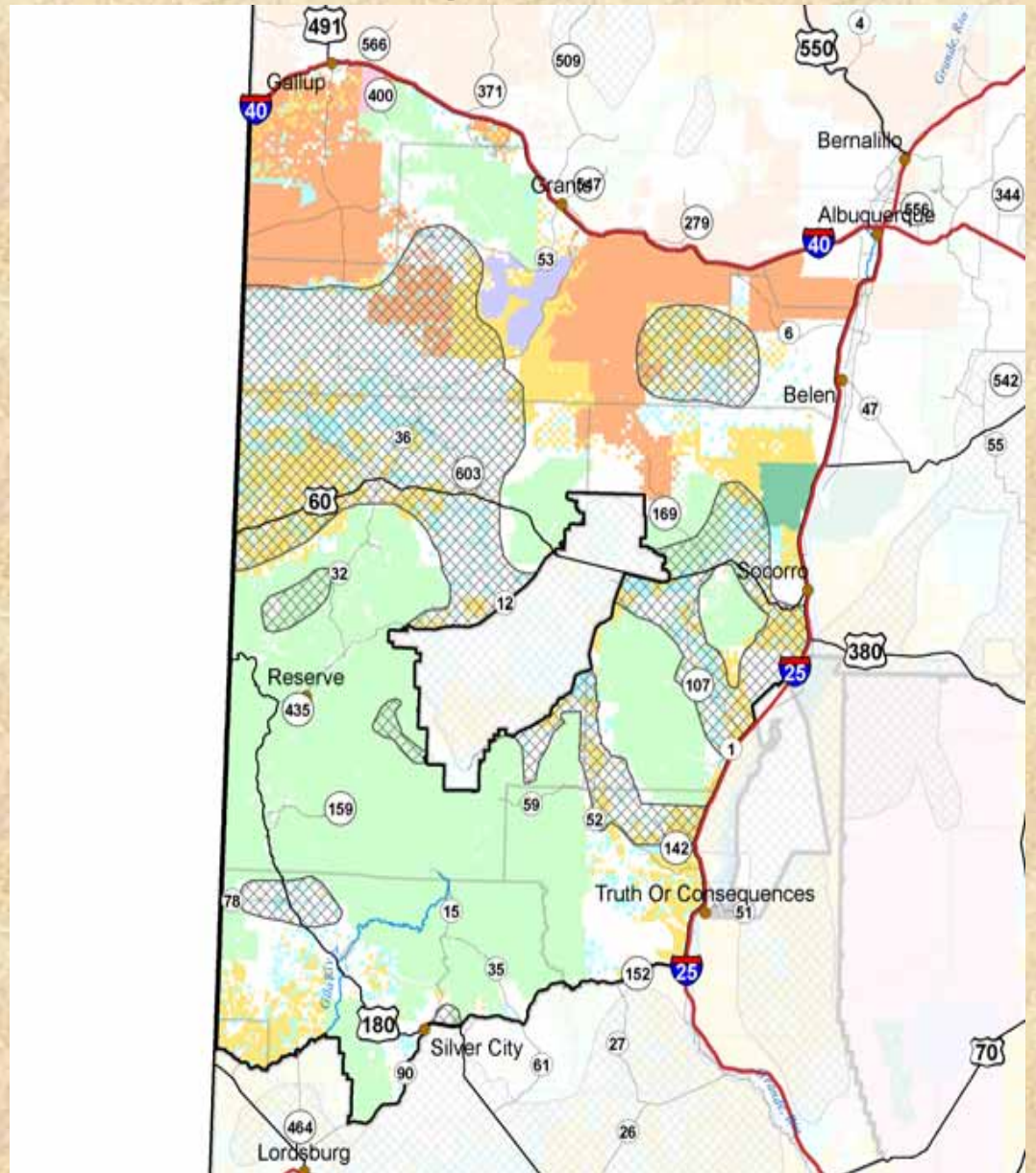
2009-2010 hunt seasons		2010-2011 hunt seasons		hunt code	licenses	bag limit
hunt start	hunt end	hunt start	hunt end			
8/1/2009	8/9/2009	7/31/2010	8/8/2010	ANT-2-101	3	MB
8//29/2009	9/2/2009	8/28/2010	9/1/2010	ANT-1-102	17	MB
9/5/2009	9/9/2009	9/4/2010	9/8/2010	ANT-1-103	17	MB

- Private land authorizations to qualified ranches

2009-2010 hunt seasons				2010-2011 hunt seasons			
buck	doe	bow only	total	buck	doe	bow only	total
2	0	0	2	2	0	0	2

West Central region

- Population estimate = 3000-5000
- Sustainable harvest: buck = 211
- Licenses:
mature buck = 206
mature buck bow = 85
- Land ownership of COAR:
49% public land
51% private land



West Central Region Hunt structure

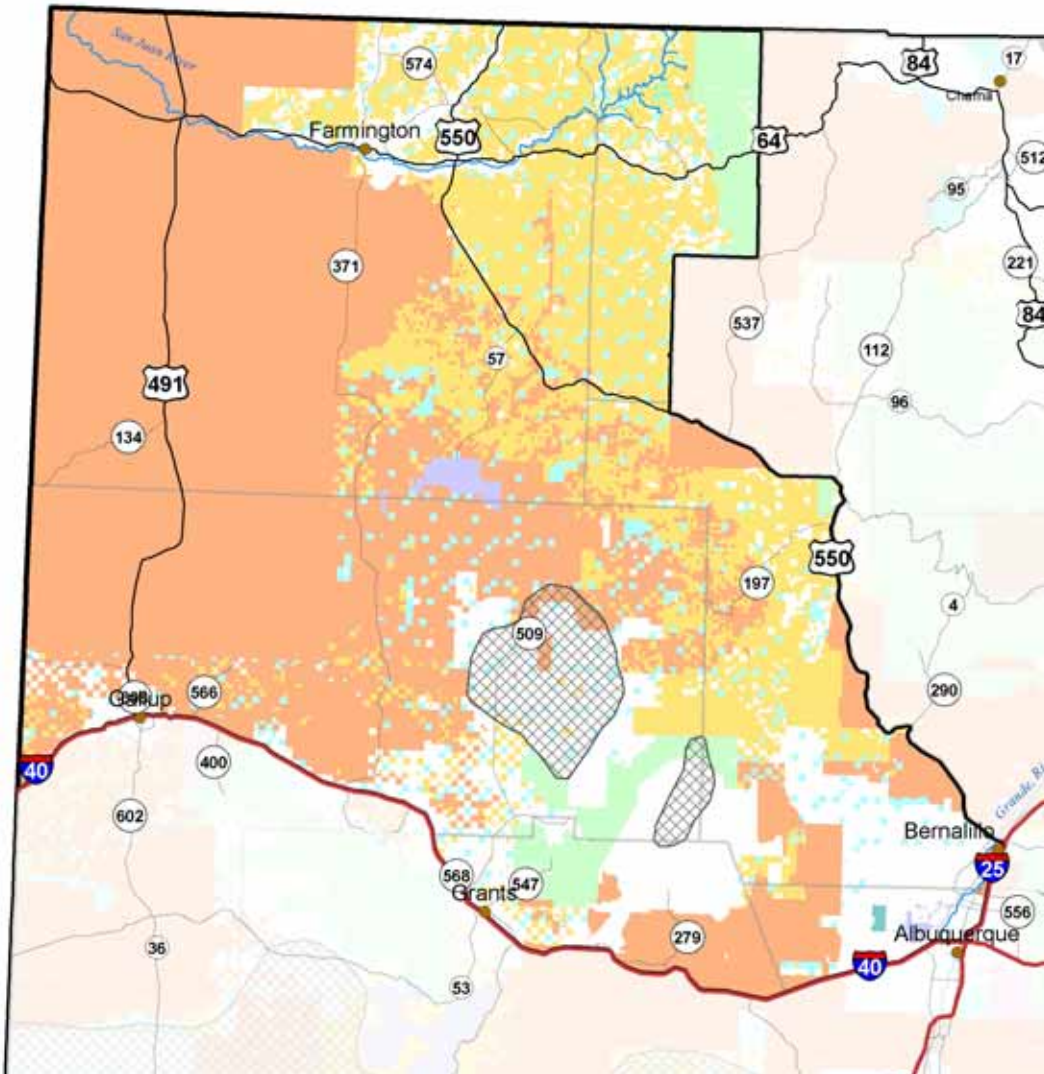
- Public draw opportunities

2009-2010 hunt seasons		2010-2011 hunt seasons		hunt code	licenses	bag limit
hunt start	hunt end	hunt start	hunt end			
8/1/2009	8/9/2009	7/31/2010	8/8/2010	ANT-2-102	44	MB
8/29/2009	9/2/2009	8/28/2010	9/1/2010	ANT-1-104	76	MB
9/5/2009	9/9/2009	9/4/2010	9/8/2010	ANT-1-105	76	MB
9/12/2009	9/16/2009	9/11/2010	9/15/2010	ANT-1-106	98	F-IM
9/19/2009	9/23/2009	9/18/2010	9/22/2010	ANT-1-107	99	F-IM

- Private land authorizations to qualified ranches

2009-2010 hunt seasons				2010-2011 hunt seasons			
buck	doe	bow only	total	buck	doe	bow only	total
158	203	46	407	158	203	46	407

North West region



- Population estimate = 50-100
- Sustainable harvest:
buck = 4
- Licenses:
mature buck = 4
- Land ownership of COAR:
16% public land
84% private land

North West region hunt structure

- Public draw opportunities

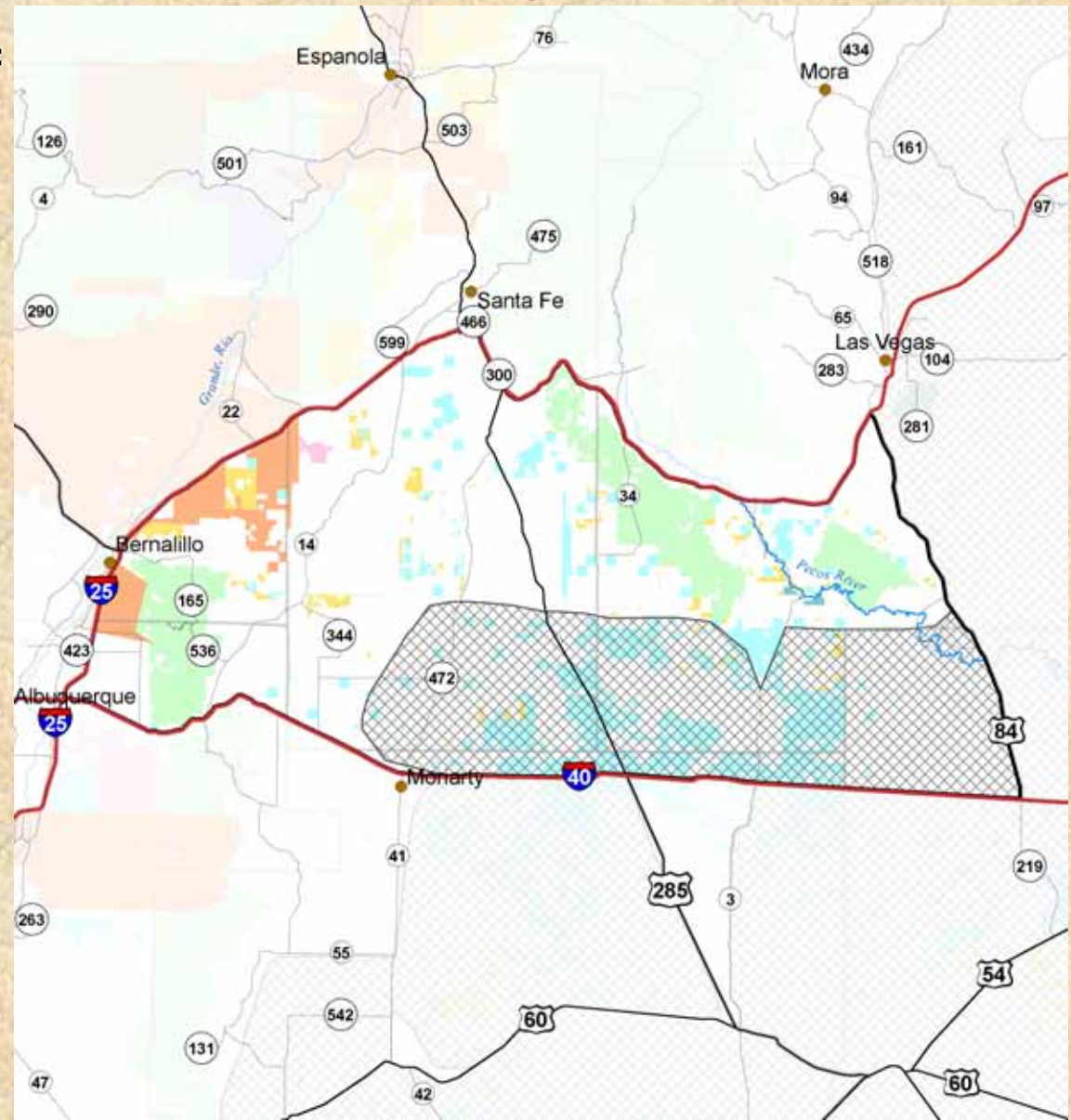
2009-2010 hunt seasons		2010-2011 hunt seasons		hunt code	licenses	bag limit
hunt start	hunt end	hunt start	hunt end			
8//29/2009	9/2/2009	8/28/2010	9/1/2010	ANT-1-108	1	MB

- Private land authorizations to qualified ranches

2009-2010 hunt seasons				2010-2011 hunt seasons			
buck	doe	bow only	total	buck	doe	bow only	total
3	0	0	3	3	0	0	3

Galisteo Basin region

- Population estimate = 600-800
- Sustainable harvest: buck = 35
- Licenses:
 - mature buck = 31
 - mature buck bow = 25
- Land ownership of COAR:
 - 25% public land
 - 75% private land



Galisteo Basin region hunt structure

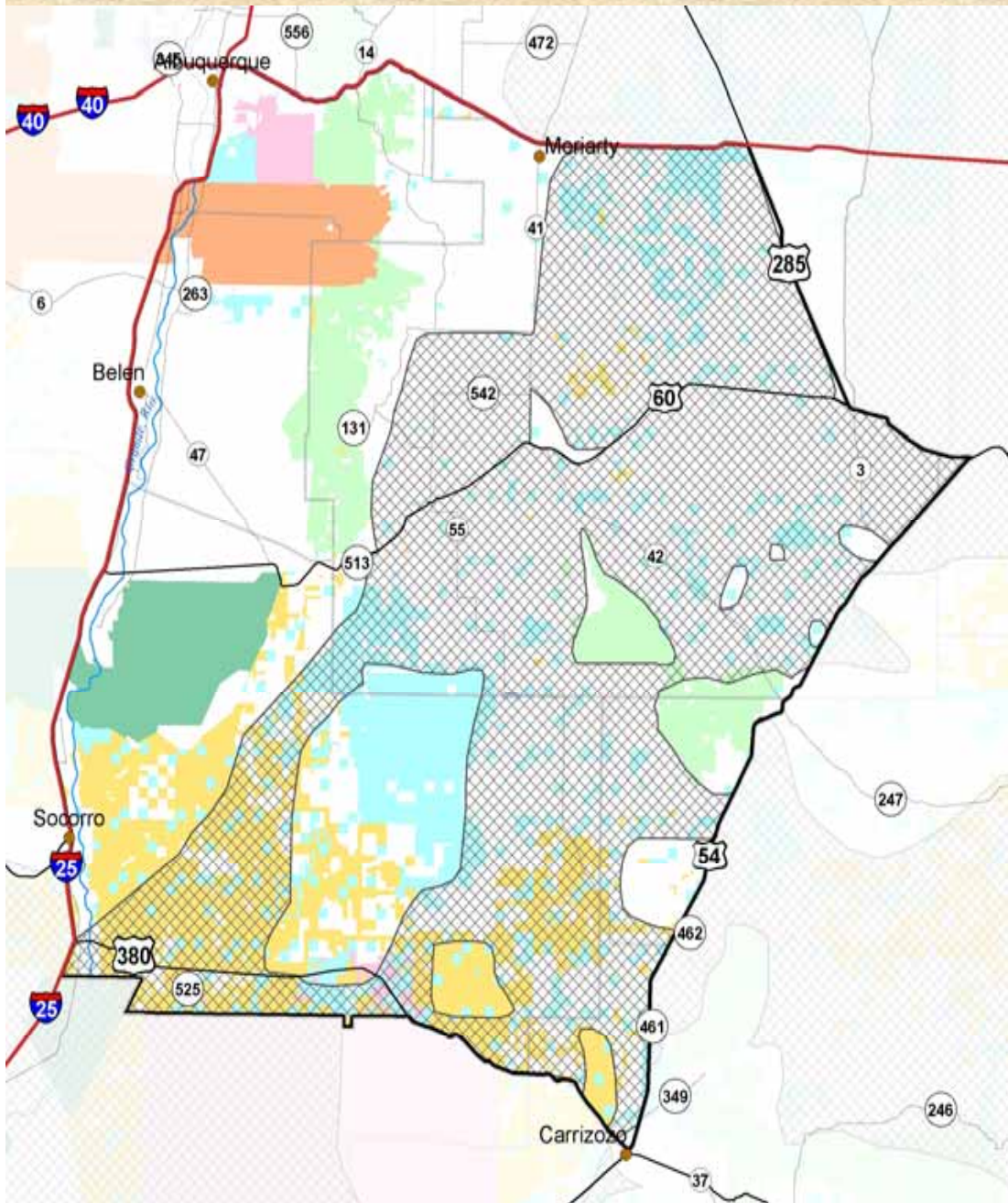
- Public draw opportunities

2009-2010 hunt seasons		2010-2011 hunt seasons		hunt code	licenses	bag limit
hunt start	hunt end	hunt start	hunt end			
8/1/2009	8/9/2009	7/31/2010	8/8/2010	ANT-2-104	6	MB
8//29/2009	9/2/2009	8/28/2010	9/1/2010	ANT-1-109	8	MB

- Private land authorizations to qualified ranches

2009-2010 hunt seasons				2010-2011 hunt seasons			
buck	doe	bow only	total	buck	doe	bow only	total
23	0	19	42	23	0	19	42

Estancia valley region



- Population estimate = 11000-13000
- Sustainable harvest:
buck = 600
doe = 202
- Licenses:
mature buck = 642
female-immature = 224
mature buck bow = 75
- Land ownership of COAR:
30% public land
70% private land

Estancia valley region hunt structure

- Public draw opportunities

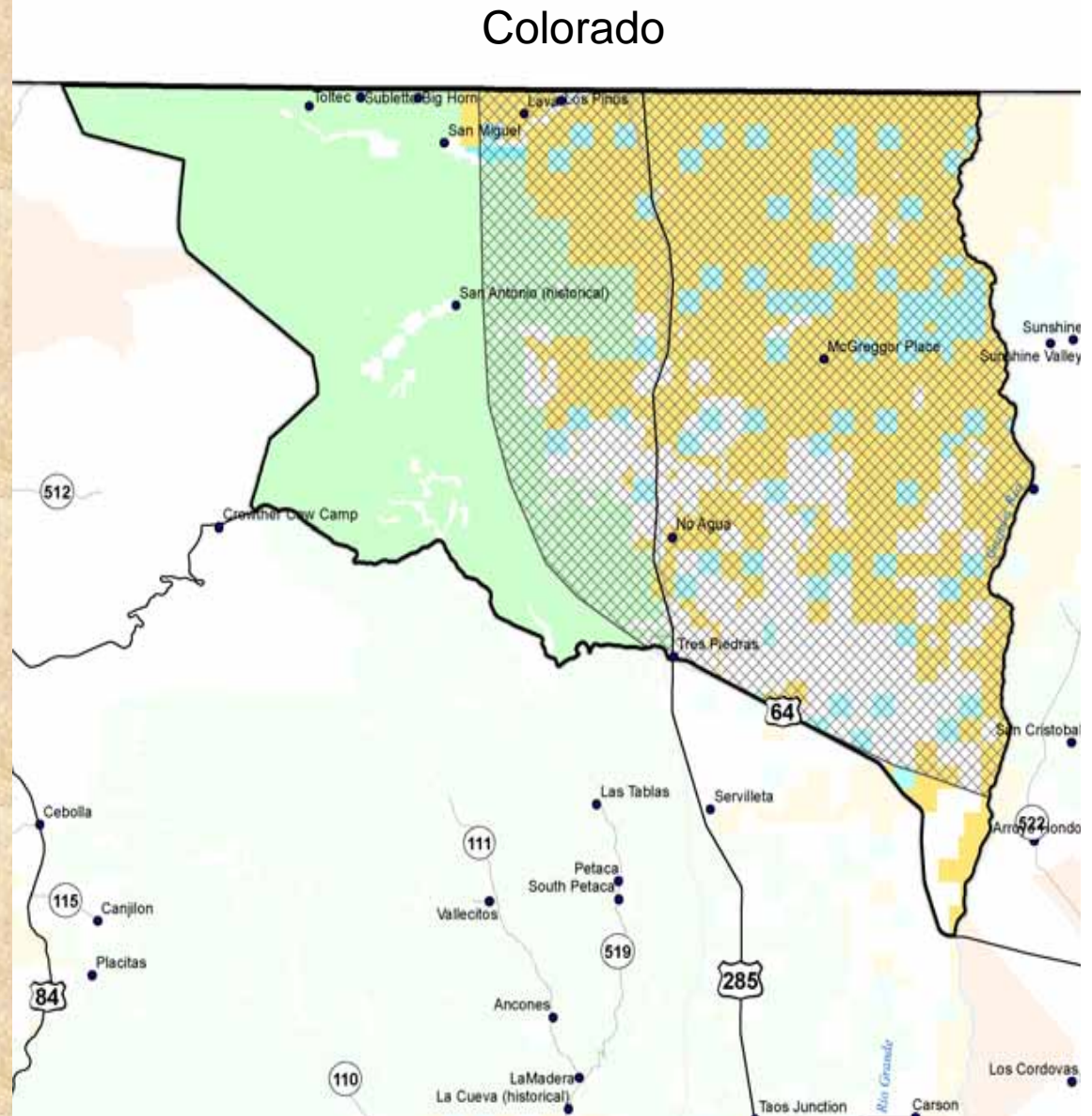
2009-2010 hunt seasons		2010-2011 hunt seasons		hunt code	licenses	bag limit
hunt start	hunt end	hunt start	hunt end			
8/1/2009	8/9/2009	7/31/2010	8/8/2010	ANT-2-105	23	MB
8/29/2009	9/2/2009	8/28/2010	9/1/2010	ANT-1-111	64	MB
9/5/2009	9/9/2009	9/4/2010	9/8/2010	ANT-1-112	65	MB
9/12/2009	9/16/2009	9/11/2010	9/15/2010	ANT-1-113	65	MB
9/19/2009	9/23/2009	9/18/2010	9/22/2010	ANT-1-114	11	F-IM
9/26/2009	9/30/2009	9/25/2010	9/29/2010	ANT-1-115	12	F-IM

- Private land authorizations to qualified ranches

2009-2010 hunt seasons				2010-2011 hunt seasons			
buck	doe	bow only	total	buck	doe	bow only	total
586	430	70	1086	586	430	70	1086

San Antonio region

- Population estimate = 2000-4000
- Sustainable harvest: buck = 168
- Licenses: mature buck = 187
- Land ownership of COAR:
 - 77% public land
 - 33% private land



San Antonio region hunt structure

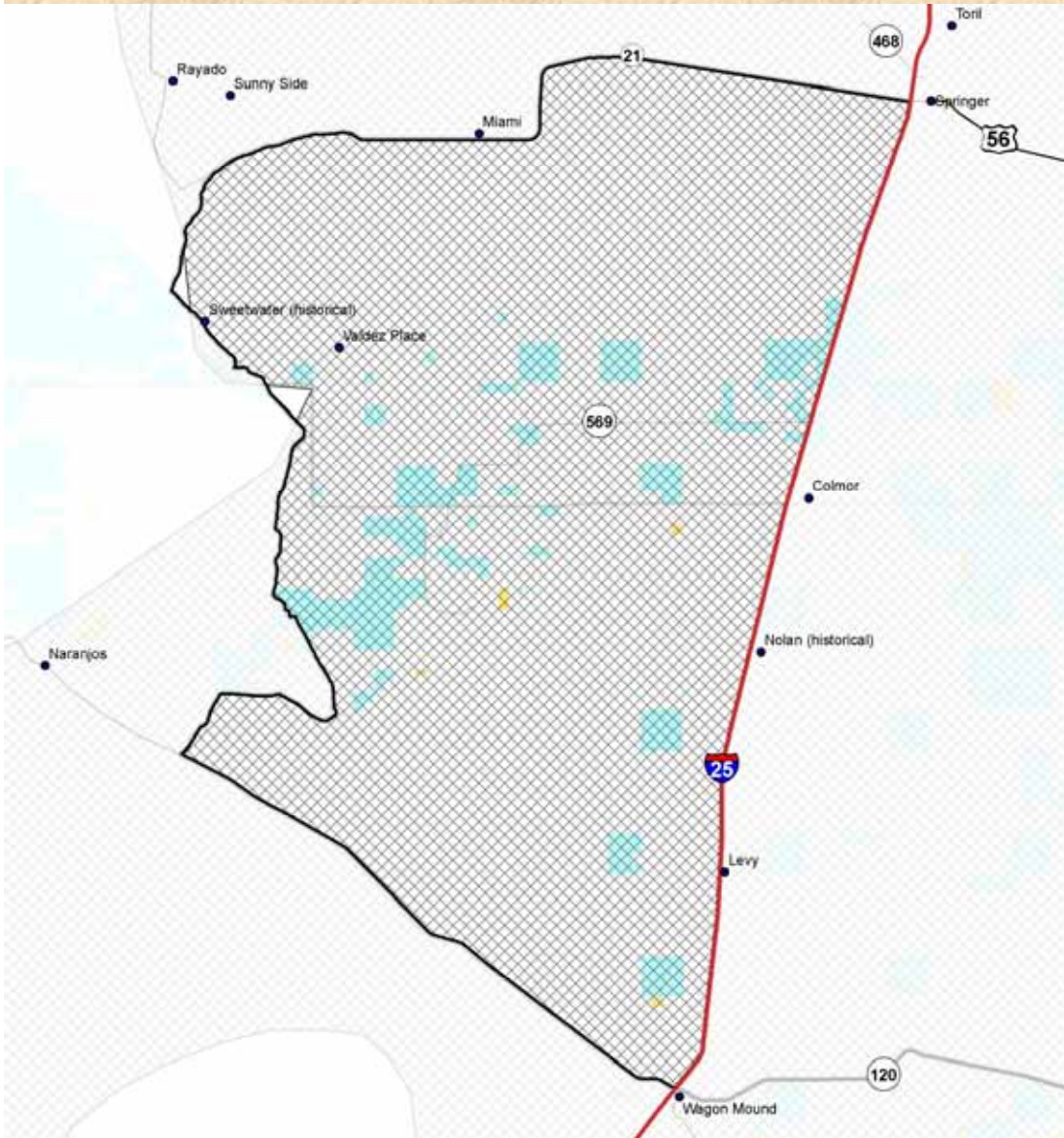
- Public draw opportunities

2009-2010 hunt seasons		2010-2011 hunt seasons		hunt code	licenses	bag limit
hunt start	hunt end	hunt start	hunt end			
8/1/2009	8/9/2009	7/31/2010	8/8/2010	ANT-3-100	72	MB
8/29/2009	9/2/2009	8/28/2010	9/1/2010	ANT-3-101	73	MB

- Private land authorizations to qualified ranches

2009-2010 hunt seasons				2010-2011 hunt seasons			
buck	doe	bow only	total	buck	doe	bow only	total
42	0	0	42	42	0	0	42

Ocate region



- Population estimate = 1500-1700
- Sustainable harvest:
buck = 80
doe = 7
- Licenses:
mature buck = 89
female-immature = 8
- Land ownership of COAR:
7% public land
93% private land

Ocate region hunt structure

- Public draw opportunities

2009-2010 hunt seasons		2010-2011 hunt seasons		hunt code	licenses	bag limit
hunt start	hunt end	hunt start	hunt end			
9/5/2009	9/9/2009	9/4/2010	9/8/2010	ANT-1-128	6	MB
10/3/2009	10/7/2009	10/2/2010	10/6/2010	ANT-1-130	1	F-IM

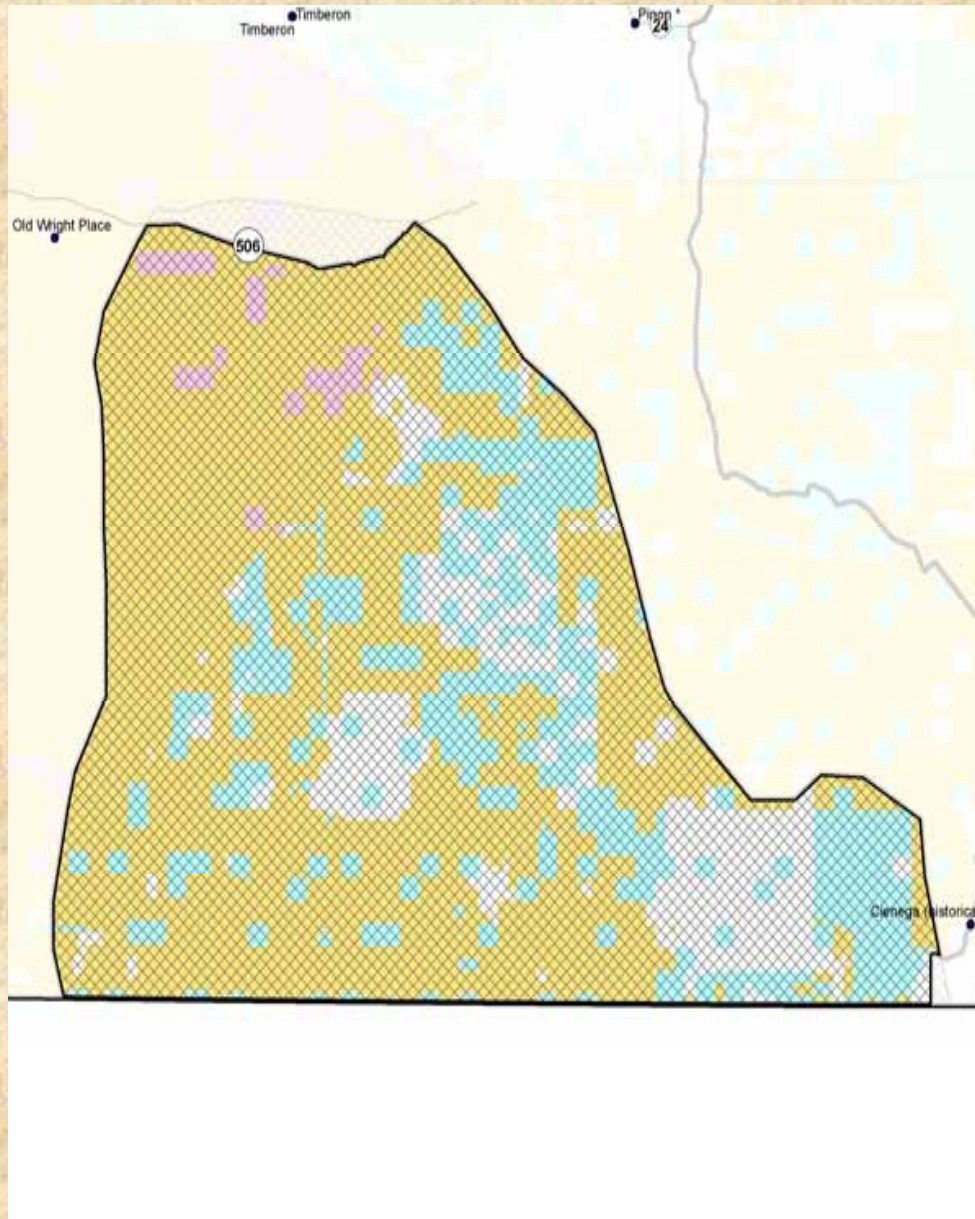
- Private land authorizations to qualified ranches

2009-2010 hunt seasons				2010-2011 hunt seasons			
buck	doe	bow only	total	buck	doe	bow only	total
83	7	0	90	83	7	0	90

Special Management Areas



Otero



- Population estimate = 500-700
- Sustainable harvest: buck = 30
- Licenses: mature buck = 33
- Land ownership of COAR:
 - 87% public land
 - 13% private land

Otero Hunt structure

- Public draw opportunities

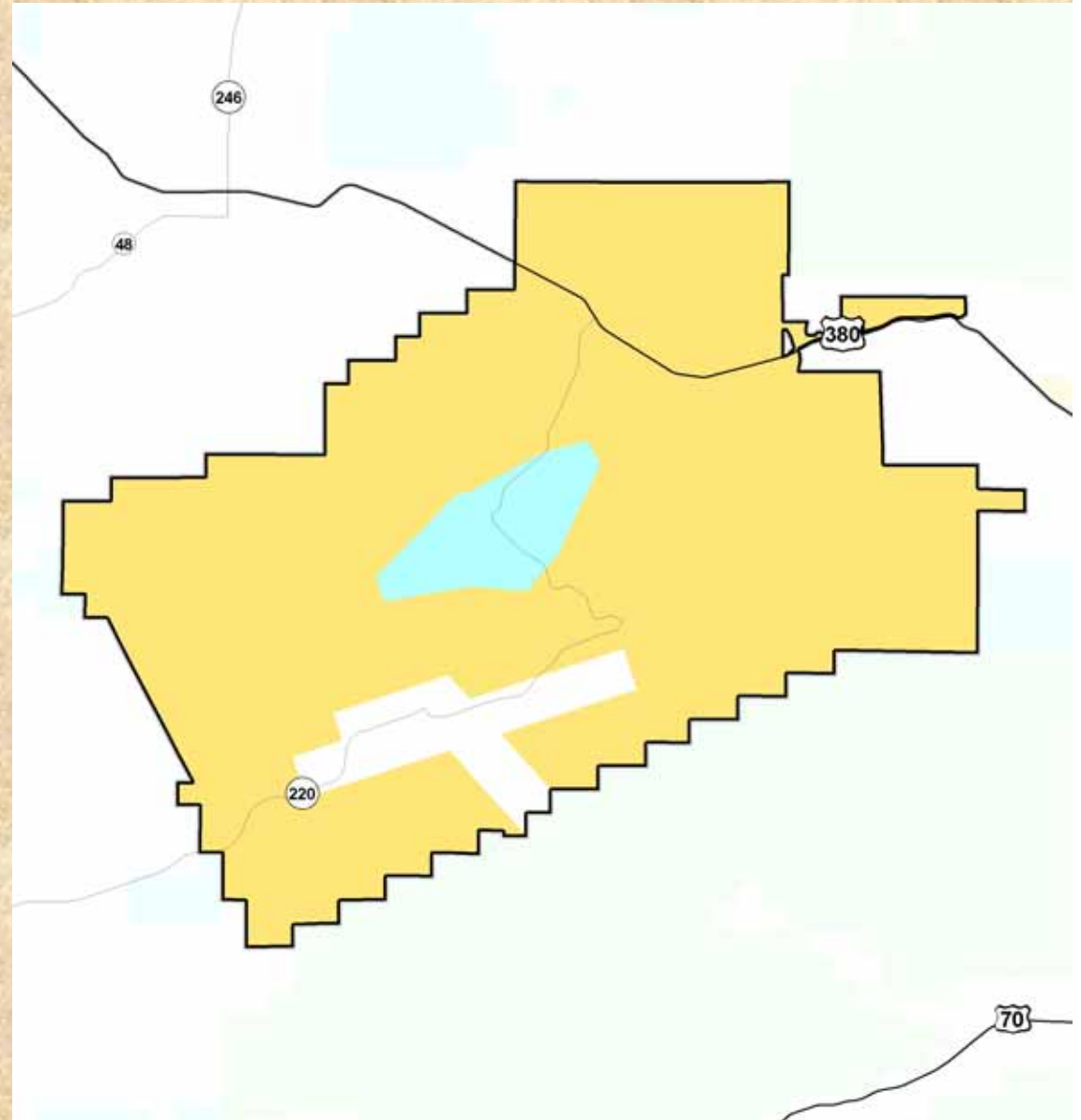
2009-2010 hunt seasons		2010-2011 hunt seasons		hunt code	licenses	bag limit
hunt start	hunt end	hunt start	hunt end			
8//29/2009	9/2/2009	8/28/2010	9/1/2010	ANT-1-125	14	MB
9/5/2009	9/9/2009	9/4/2010	9/8/2010	ANT-1-126	15	MB

- Private land authorizations to qualified ranches

2009-2010 hunt seasons				2010-2011 hunt seasons			
buck	doe	bow only	total	buck	doe	bow only	total
4	0	0	4	4	0	0	4

Fort Stanton youth only

- Population estimate = 1200-1400
- Sustainable harvest: doe = 68
- Licenses:
Female-immature = 75
- Land ownership of COAR:
98% public land
2% private land

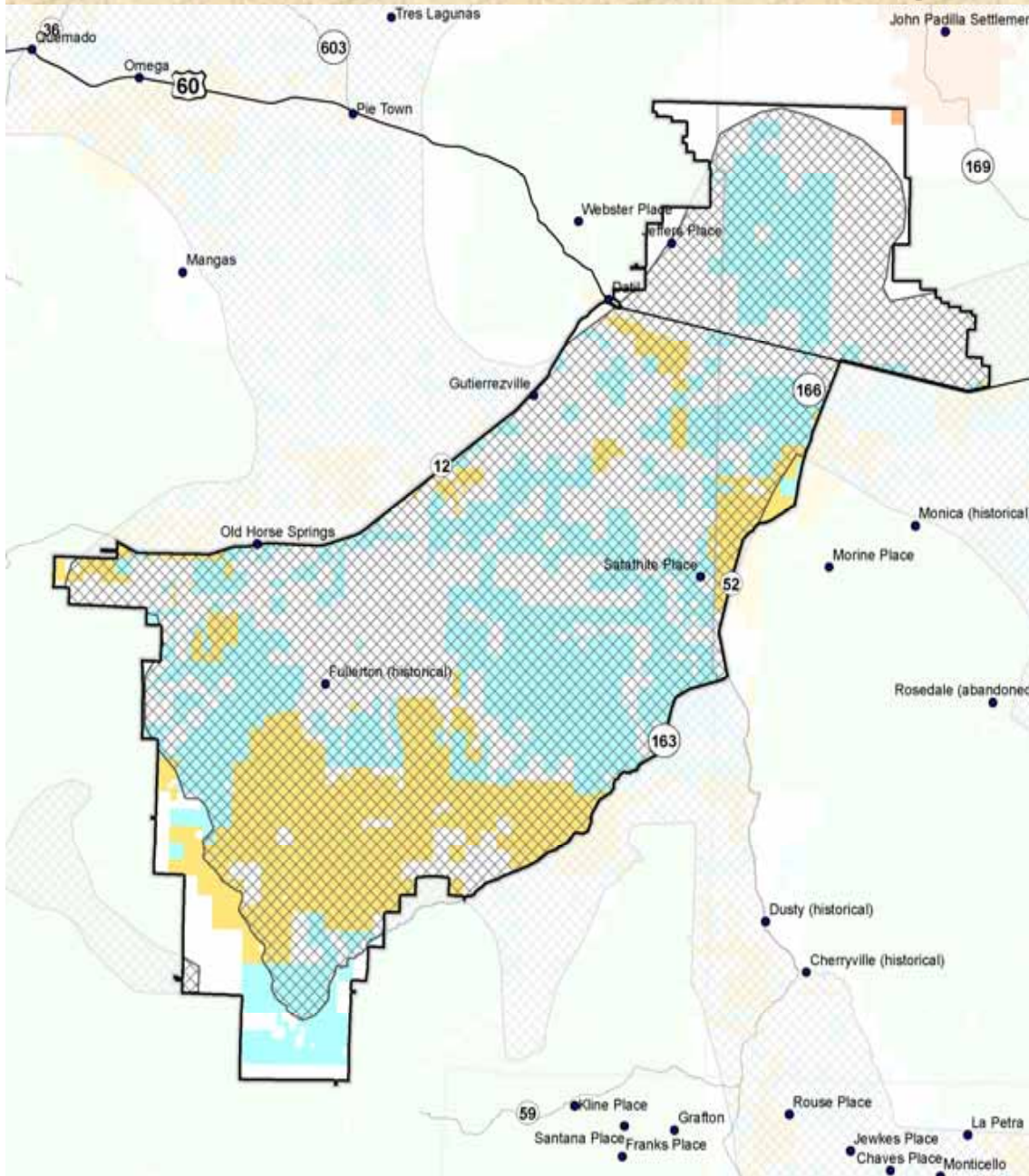


Fort Stanton Hunt structure

- Public draw opportunities

2009-2010 hunt seasons		2010-2011 hunt seasons		hunt code	licenses	bag limit	
hunt start	hunt end	hunt start	hunt end				
8//29/2009	9/2/2009	8/28/2010	9/1/2010	ANT-1-123	37	F-IM	Youth Only
9/5/2009	9/9/2009	9/4/2010	9/8/2010	ANT-1-124	38	F-IM	Youth Only

San Augustine



- Population estimate =
- Sustainable harvest:
buck =
- Licenses:
mature buck =
Female immature =
mature buck bow =
- Land ownership of COAR:
56% public land
44% private land

The End

