

THE DISTRIBUTION, ABUNDANCE AND HABITAT USE OF
ABERT'S TOWHEE (*Pipilo aberti*) AND GILA WOODPECKER
(*Melanerpes uropygialis*) IN THE GILA RIVER VALLEY OF
SOUTHWESTERN NEW MEXICO

ANNUAL PROJECT REPORT – 2009 FIELD SEASON

By

Roland S. Shook

A SHARE WITH WILDLIFE PROJECT
NEW MEXICO DEPARTMENT OF GAME AND FISH
Contract No. 08-516-0000-00018
JUNE 2009

This report represents the progress made during the 2009 field season on the Share with Wildlife project entitled, "The distribution, abundance and habitat use of Abert's Towhee (*Pipilo aberti*) and Gila Woodpecker (*Melanerpes uropygialis*) in the Gila River Valley of southwestern New Mexico." As required by the Department of Game and Fish Contract (08-516-0000-00018), the Contractor, Roland Shook, is to "submit an annual project report to the Agency by June 15. At minimum, this report will contain results from A.1 through A.3."

Owing to the fact that this project will continue throughout the summer and into the early fall of 2009, this report only represents a portion of the total scope of this study. The following represent the major remaining areas to be completed:

1. Record sightings and their GPS locations for both species throughout the remainder of the summer and early fall.
2. Complete the analysis of data that has been collected from the field survey protocol and field surveys. Determine densities of both species at Nichol's Canyon and at the Little's using the computer package DISTANCE.
3. Collect and analyze vegetative data in Nichol's Canyon, the Little's, and in the Cliff/Gila Valley to determine habitat preferences for both species.
4. Continue to collect and analyze nest data for both species.

Following is a presentation of the information collected and analyzed to date as required by the Department of Game and Fish Contract.

HISTORICAL RECORDS OF ABERT'S TOWHEES AND GILA WOODPECKERS IN THE GILA RIVER VALLEY IN SOUTHWESTERN NEW MEXICO

The attached database is a compilation of the records of Abert's Towhee and Gila Woodpecker from the Gila River Valley in southwestern New Mexico. The purpose of this database is to compile records of both species gleaned from a number of published and unpublished sources as well as field records obtained during this study.

Sources

- Florence Bailey. *The Birds of New Mexico* (1928).
- John Egbert. *Field Inventories in New Mexico of Selected Gila Valley Birds* (1981)
- John Hubbard. *The Summer Birds of the Gila Valley, New Mexico* (1971)
- John Hubbard. *Revised Check-list of the Birds of New Mexico* (1978).
- J. Stokley Ligon. *New Mexico Birds and Where to Find Them* (1961).
- Dale Zimmerman. *Birds and Bird Habitats on National Forest Lands in the Gila River Valley, Southwestern, New Mexico* (1970)

- New Mexico Ornithological Society. *Field Notes* (1962, Vol. 1(1) to 2007, Vol. 46(2)),
- National Audubon Society. *Audubon Field Notes*. (1947, Vol. 1 (1) to 1970, Vol. 24 (6)).
- National Audubon Society. *American Birds*. (1971, Vol. 25(1) to 1994, Vol. 48(1)).
- National Audubon Society. *National Audubon Society Field Notes*. (1994, Vol. 48(2) to 1997, Vol. 51 (3)).
- American Birding Association. *Field Notes*. (1997, Vol. 51 (4) to 1998, Vol. 52 (4)).
- American Birding Association. *North American Birds*. (1998, Vol. 53 (1) to 2007, Vol. 62 (3)).
- National Audubon Society. Annual Gila River Christmas Bird Count. (1972, 73rd through 2007, 108th).
- National Audubon Society. Annual Virden Christmas Bird Count. (1953, 53rd).
- Southwestern Audubon Society Big Day Count and Gila River Spring Count. (1967 to 2007).
- Unpublished records of local individuals.
- Field records obtained up to 21 June 2009, as a result of this study.

Based upon the above New Mexico records, these two Sonoran Desert species are concentrated in suitable habitat along the Gila River near the towns of Virden, Redrock, Cliff and Gila. A few records, for both of these species, exist from areas between the above locations, but these are sparse, perhaps owing to lack of access to these areas, unsuitable habitat and/or fewer observers.

DATABASE

The following general information concerns the use of this database. These considerations are modified from those found on the New Mexico Ornithological Society (NMOS) Web site and are a product of discussions between many individuals familiar with the production and use of avian databases.

By their vary nature, published and unpublished observations of bird species are selective.

An observer somewhere records personal observations of one or both of these species of birds. The observer decides that some/all of the observations are worthy of note and documents his/her observations. Some of these observations are then submitted to an editor or compiler to be included in a publication, recognized count or included in personal records.

If these records are submitted to an editor or compiler, they assess all submissions and determine which records represent biologically interesting or

significant data that add to the knowledge base and are worthy of inclusion in the specific publication or count. Due to the limitations of space in many publications, these "worthy records" from multiple contributors are compiled, summarized, and published as important records for the state or are included in the records of a specific count.

The data available to many publications or counts are the product of the observations and data recording/submission practices of many individuals. Therefore, the quality of the data is dependent on the skills of the observers, which vary considerably. Misidentifications occur in spite of the best intentions and in spite of diligent screening of submissions by the editor or compiler.

In many cases, submitted observations are not a product of standardized or well-described field data collection methods. Lack of data does not necessarily mean lack of birds. Documented patterns in bird data in a particular location may not necessarily correspond to actual changes in bird numbers or their presence/absence. This could be for a number of reasons associated with observers. It may indicate a lack of observers in a locality or region. The number and/or quality of observers in a particular area may also have changed over time: Examples - (1) a long-time observer who submitted many reports from a particular area may move or no longer be able to submit observations, (2) a new observer may begin submitting reports in an area from which reports were previously rare, or (3) an observer's skills may improve or decline over time. (4) the number of records could also be associated with the behavior of a species. Some species are more or less detectible at different times of the year.

The information on the observation location is of varying quality and specificity. The locations were frequently very general and/or difficult to understand or relocate especially for early observations, prior to the common use of standardized maps or GPS units.

All of the variables listed above need to be taken into account when interpreting the data submitted in this database. This represents a compilation, in a searchable Excel Spreadsheet format, of the data obtained from the above sources on Abert's Towhee and Gila Woodpecker observations in the Gila River Valley of southwestern New Mexico.

The column explanations appear below.

Column 1 **Species' name:** Abert's Towhee or Gila Woodpecker.

Column 2 **Date:** If no specific date for the observation is known or given, the date of the publication or the beginning date of the period reported is used. This designation is explained in the comments field. Observations with duplicate dates may be the same record reported

by more than one observer. If the comment field is the same for each observer, the observation should be considered one record.

Column 3 **Count:** If a specific number of birds is mentioned or known, this is reported. Some records mention presence or absence of a particular species. The lack of quantitative data is mentioned in the comments field.

Column 4 **Comments:** This field is used to explain various parts of a specific record. If the published information includes comments; the original comments are recorded in this field. Comments are also made in regard to date, numbers, source, author, etc. Christmas Birds Counts (CBC) and Gila River (GR) Spring Counts often cite the compiler of the count if known. If for CBCs and Gila River Spring Counts the information was obtained from another publication, the compiler is often identified as the “observer” of record when the original observer is unknown. Some publications use initials to designate various observers. Initials in the comment field are either explained or they are the initials of the cited observer or count compiler. Some observations were reported and published in more than one publication. This becomes obvious by comparing dates, observers, comments and citation.

Column 5 **Observer:** The name of the original observer, if known, is given. The comments concerning the original observer are found in the comments field often using his/her name or initials. If specific observers are not known, as is often the case on CBCs or the Gila River Spring Counts, then the observation is credited to the compiler of the count.

Column 6 **Location:** If the specific location of the observation is known it is cited in this column. Non-specific locations are often designated as “Gila River Valley.”

Unfamiliar place names are described as follows (coordinates of locations use UTM notation, NAD 27). All locations are in Grant Co., unless otherwise noted:

Agnew – owned by The Nature Conservancy (TNC) and located on the east side of the Gila River approximately 3 km above Gila (UTM 12 S 07 29 788 E 36 49 388 N).

Buckhorn – a small town located approximately 16 km west of Cliff on Highway 180 and along Duck Creek (UTM 12 S 07 14 343 E 36 57 435 N).

Duck Creek – a tributary of the Gila River, entering the river near Cliff (UTM 12 S 07 23 664 E 36 48 508 N).

Fort West Ditch – Part of the Gila National Forest. It is found approximately 10 km above Cliff on the east side of the Gila River (UTM 12 S 07 29 791 E 36 56 127 N).

Fisherman's Point – on the Gila River (Grant Co./Hidalgo Co.) approximately 13 km downstream from Redrock, administered by the Bureau of Land Management (BLM) (UTM 12 S 07 01 448 E 36 12 689 N).

Gila Bird Area – Part of the Gila National Forest, this predominately riparian area is located approximately 13 km downstream from Cliff (UTM 12 S 07 23 801 E 36 35 088 N).

Lichty Center – Owned by TNC and located along the west side of the Gila River approximately 6 km north of Cliff (UTM 12 S 07 28 472 E 36 55 511 N).

Little's – private property owned by Fred and Kay Little located near the town of Redrock (12 S 07 02 208 E 36 14 332 N)

Mangas Springs – located approximately 19 km east of Cliff on Highway 180 (UTM 12 S 07 32 974 E 36 36 059 N). Water from Mangas Springs empties into the Gila River below Bill Evans Lake.

Mogollon Creek – a tributary to the Gila River that enters the river from the west approximately 11 km above Cliff (UTM 12 S 07 30 660 E 36 58 891 N).

Nichol's Canyon – a canyon approximately 11 km downstream from Redrock. Designated as the Gila Lower Box Wilderness Management Area which is synonymous with the Lower Gila Box (UTM 12 S 07 02 561 E 36 14 781 N). This area is managed by the BLM.

Runyan's – private property owned by Joe and Sherri Runyan that lies on the east side of the Gila River, just north of the Highway 180 Bridge over the Gila River (UTM 12 S 07 23 711 E 36 48 334 N).

Spring on Bluff – a canyon approximately 14 km downstream from Redrock managed by the BLM (UTM 12 S 06 99 321 E 36 12 578 N)

- Column 7 **NMOS Vol.** (New Mexico Ornithological Society *Field Notes*). The specific volume is cited that published the observation.
- Column 8 **NMOS No.** (New Mexico Ornithological Society *Field Notes*). The specific number of the volume cited in Column 7 is given.
- Column 9 **NMOS Sea. Report** (New Mexico Ornithological Society *Seasonal Reports*). Beginning in June 1962, through November 1965, NMOS published eight Seasonal Reports before switching to a volume and number designation.
- Column 10 **CBC:** National Audubon Society's Annual Gila Christmas Bird Count centered on the town of Riverside. The count began in 1972 and has continued through the 109th Count in December 2008.
- Column 11 **AFN Vol.** (National Audubon Society's *Audubon Field Notes* and successive publications). Although the names have changed over the years (*Field Notes*, *Audubon Field Notes*, *American Birds*, *National Audubon Society Field Notes*, *Field Notes*, and *North American Birds*), the volume and number designation have remained consistent (see Sources for sequence of names, volumes and numbers). The specific volume is cited that published the specific record.
- Column 12 **AFN No.** (National Audubon Society's *Audubon Field Notes* and successive publications). For further explanation see column 11 above. The specific number of the volume cited in column 11 is given.

FIELD SURVEY PROTOCOL AND FIELD SURVEYS

Field survey protocol for the 2009 field season used DISTANCE, a Windows-based computer package:

(<http://www.ruwpa.st-and.ac.uk/distance/distanceabout.html>) to detect the presence or absence of Abert's Towhees and Gila Woodpeckers, as well as estimate their respective densities.

Two study sites were established; one at Nichol's Canyon, approximately 11 km downstream from Redrock, Grant Co., (elevation 1187 m), and the other on the Little's private property at Redrock (elevation 1225 m.)

At each site a number of random sampling points (4 at Nichol's Canyon and 6 at the Little's study site) were established. Approximately weekly censusing began at the end of January 2009, and continued through the first week of May. A census would consist of walking to an established point, waiting 2 minutes, and then recording all Abert's Towhees and/or Gila Woodpeckers detected during the

next 10 minutes. A compass bearing and distance would be taken for each detection at each point. These detections were then plotted on an image generated by Google Earth version 5.0 (<http://earth.google.com/>). Notations associated with Abert's Towhee sightings on the Google Earth plots entitled "TC" and "GR" refer to territorial calls and greeting calls, respectively. Notation associated with Gila Woodpecker sightings on the Google Earth plots entitled "WI" and "CH" refer to "wick" calls and "chur" calls, respectively. (Note: Download Google Earth and the "Bird Report Final" file to your computer. Install Google Earth. Now click on the file "Bird Report Final", and you will now be able to observe all the detections recorded at both study sites on a Google Earth image. Note that on the left-hand column of the Google Earth screen, you can check or un-check each box under temporary places to either show or "hide" various observations).

The distance data collected for each species, for each detection, for each day will be used with the program DISTANCE to determine densities of both Abert's Towhees and Gila Woodpeckers at each site.

Data was and will be collected from May through July on the presence or absence of Abert's Towhees and Gila Woodpeckers in the Cliff/Gila Valley. Field surveys will consist of walking the Gila River three times from near Bill Evans Lake north to the gauging station above Mogollon Creek recording the GPS position of all Gila Woodpeckers and Abert's Towhees detected. This data will be entered into the database of all historical Abert's Towhee and Gila Woodpecker records. Records for the 2008 and 2009 field season will be plotted on the appropriate USGS Topographic Quadrangles (1:24,000).

VEGETATIVE CHARACTERISTICS OF NEST SITES OF ABERT'S TOWHEES AND GILA WOODPECKERS.

Using BBIRD nest location protocol (Martin et al., 1997), five Abert's Towhee's nest locations were analyzed (Table 1 and 2). The plant species, health (alive or dead), diameter of the nest tree at breast height (DBH), and the height of the nest tree were measured. Data was collected on the nest height and orientation of each nest. For many of the nests, there were a number of small branches supporting the nest, as well as many twigs that had a diameter less than 1 cm. For our purposes, just the main branches (1 cm or greater in diameter) were counted and their diameter measured and averaged. The nest's distance from the main stem (or center of the shrub) was measured, along with the nest's distance from the foliage edge. For nests less than a meter high, the percentage of overhead cover was estimated. For nests less than 2 meters high, the percentage of side cover from each of the cardinal directions was measured.

There were five Abert's Towhee nests analyzed. Four of them were located in the Cliff/Gila Valley in riparian vegetation adjacent to the Gila River; the elevation in this area ranged from 1364 to 1385 m. The fifth nest was located in Nichol's

Canyon and was on the first terrace adjacent to the Gila River in riparian vegetation at an elevation of 1187 m. Of the four nests in the Cliff/Gila Valley, three were located in Box Elder (*Acer negundo*) and one was in a Goodding's Willow (*Salix gooddingii*). The nest in Nichol's Canyon was found in a Crown-of-Thorns (*Koeberlinia spinosa*) shrub that was growing out of the middle of a Net-leaf hackberry shrub (*Celtis reticulata*). The height of the plant species that the nests were found in was variable, ranging from 1.05 m (in the Crown-of-Thorns) to 13 m (in a Box Elder). The DBH of the trees ranged from 26-128cm (the DBH of the Crown-of-Thorns was not measured due to the lack of a main stem). The height of the nest in the plant varied from 0.51-5.5m. All of the nests in the Cliff/Gila Valley were located immediately against the main stem of the tree, while the nest in Nichol's Canyon was located about 10 cm from the center of the shrub. The distance of the nest from the foliage edge ranged from 30-50 cm. The nest orientations were also variable, at 11°, 79°, 170°, and 182°. As per protocol, the orientation of the nest in Nichol's Canyon was not determined since the nest entrance and exit was directly overhead. The number of supporting branches ranged from 3-7 branches and the average diameters of those branches ranged from 2.6-19.7 cm. Of the five nests, only the nest in Nichol's canyon had a second plant species providing concealment; for that nest the Crown-of-Thorns was located in the middle of a Net-leaf Hackberry that provided some of the concealment for the nest. Only one of the nests (Nichol's Canyon) was located low enough in the plant to be able to estimate the percentage of overhead cover (45%). The percentage of side cover was measured for two of the nests (Nichol's canyon, and one in the Cliff-Gila Valley), for the nest in Nichol's Canyon, the percentages were: N 50%, S 65%, E 90%, W 90%. For the nest in the Cliff-Gila Valley, the percentages were estimated from the cover of 2008, when the nest was active, the percentages were: N 75%, S 85%, E 35%, W 85%. In the Cliff-Gila Valley, all the nests were associated with a part of the tree where the main branch breaks off and new dense growth occurs. The nests were located in the middle of this new dense vegetation.

Additional vegetative information will be collected in Nichol's Canyon, the Little's property, and in the Cliff/Gila Valley to better understand the vegetative characteristics of the habitat used by Abert's Towhees and Gila Woodpeckers. Information will be synthesized from a number of sources to get a better understanding of breeding and nesting characteristics of both Abert's Towhees and Gila Woodpeckers. Continued searches for nests and individuals of each species will take place through July 2009.

Date	Nichol's Canyon	Gila-Cliff Valley Averag	Gila-Cliff Valley Ran	Total Average	Total Range:
Species	ABTO	ABTO	ABTO	ABTO	ABTO
Number of nests	1	4	4	5	5
Elevation	3820 ft	4502.3 ft	4475-4544 ft	4365.8 ft	3820-4544 ft
Substrate 1	KOSP	N/A	ACNE, SAGO	N/A	N/A
Substrate 1 height	1.05 m	7.5 m	3.6-13 m	6.17 m	1.05 – 13 m
Substrate DBH	N/A ²	83.5 cm	26-128 cm	83.5 cm	26-128 cm
Tree Health	Live	Live	Live	Live	Live
Substrate 2	CERE	N/A	N/A	N/A	N/A
Nest height	0.51 m	4.0 m	1.7-5.5 m	3.3 m	0.51 – 5.5 m
Distance Nest->Stem	10 cm	0 cm	0 cm	2 cm	0-10 cm
Distance Nest->foliage edge	50 cm	31.8 cm	30-33 cm	35.4 cm	30-50 cm
Nest orientation	999 ³	110.5°	11-182°	110.5°	11-182°
# of supporting branches	9	4.5	3.0-7.0	5.4	3 – 9
Avg. diameter support branches	9 cm	10.9 cm	2.6-19.7 cm	10.5 cm	2.6-19.7 cm
Conceal 1	KOSP	N/A	3 ACNE, 1 SAGO	N/A	ACNE, SAGO, KOSP
Conceal 2	CERE	N/A	N/A	N/A	N/A
Overhead cover	45%	N/A	N/A	45%	45%
N cover	50%	75% ¹	75% ¹	62.5%	50-75%
E cover	90%	35% ¹	35% ¹	62.5%	35-90%
S cover	65%	85% ¹	85% ¹	75%	65-85%
W cover	90%	85% ¹	85% ¹	87.5%	85-90%
Notes:	*Nest in middle of KOSP which is in the middle of a CERE. ABTO heard calling at time of survey	Nest associated with where the main branch of the tree breaks off and new dense growth occurs. No ABTO heard at time of veg survey.	Nest associated with where the main branch of the tree breaks off and new dense growth occurs. No ABTO heard at time of veg survey.		
¹ Of these four nests only one nest was in a position to make these measurements			CERE – <i>Celtis reticulata</i> (Net-leaf Hackberry)		
² This nest was in shrub with no main trunk to get DBH			KOSP - <i>Koeberlinia spinosa</i> (Crown-of-Thorns)		
³ Per protocol, no orientation designated as "999"			ACNE – <i>Acer negundo</i> (Boxelder)		
			SAGO – <i>Salix gooddingii</i> (Goodding's willow)		

Table 1. Summary of Data Collected on Five Abert's Towhee Nests Using BBIRD Field Protocol.

Date	06/02/09	06/02/092	06/02/093	06/02/094	06/06/09
Plot	SE2? (Runyan's)	SW4 (1)	SW4 (2)	SW1	4E (Nichols Canyon)
Surveyors	DF, AT, DW	DF, AT, DW	DF, AT, DW	DF, AT, DW	DF, DW
Species	ABTO	ABTO	ABTO	ABTO	ABTO
UTM coordinates	12s 0723719 3648249	12s 0723889 3648666	12s 0723891 3648662	12s 0723068 3649730	12s 0703088 3614786
Elevation	4475 ft	4495 ft	4495 ft	4544 ft	3820 ft
Substrate 1	ACNE	ACNE	SAGO	ACNE	KOSP
Substrate 1 height	3.6 m	13 m	7.4 m	5.8 m	1.05 m
Substrate DBH	26 cm	108 cm	128 cm	72 cm	*
Tree Health	Live	Live	Live	Live	Live
Substrate 2	N/A	N/A	N/A	N/A	CERE
Nest height	1.7 m	5.3 m	5.5 m	3.6 m	0.51 m
Distance Nest->Stem	0 cm	0 cm	0 cm	0 cm	10 cm
Distance Nest->foliage edge	30 cm	32 cm	33 cm	32 cm	50 cm
Nest orientation	79°	182°	11°	170°	999 ³
# of supporting branches	4	4	3 ²	7 ²	9
Avg. diameter of supporting branches	2.6 cm	19.7 cm	12.8 cm	8.4 cm	9 cm
Conceal 1	ACNE	ACNE	SAGO	ACNE	KOSP
Conceal 2	N/A	N/A	N/A	N/A	CERE
Overhead cover	N/A	N/A	N/A	N/A	45%
N cover	75% ¹	N/A	N/A	N/A	50%
E cover	35% ¹	N/A	N/A	N/A	90%
S cover	85% ¹	N/A	N/A	N/A	65%
W cover	85% ¹	N/A	N/A	N/A	90%
Notes:	Nest associated with where the main branch of the tree breaks off and new dense growth occurs. No ABTO heard at time of veg survey.	Nest associated with where the main branch of the tree breaks off and new dense growth occurs. No ABTO heard at time of veg survey.	Nest associated with where the main branch of the tree breaks off and new dense growth occurs. No ABTO heard at time of veg survey.	Nest associated with where the main branch of the tree breaks off and new dense growth occurs. No ABTO heard at time of veg survey.	*Nest in middle of KOSP which is in the middle of a CERE. ABTO heard calling at
	¹ Percents estimated by DF from 2008	ACNE – <i>Acer negundo</i> (Boxelder)		CERE – <i>Celtis reticulata</i> (Net-leaf Hackberry)	
	² branches with many tiny twigs, less than 1 cm diameter	SAGO – <i>Salix gooddingii</i> (Goodding's willow)		KOSP – <i>Koeleria spinosa</i> (Crown-of-Thorns)	
	³ Per protocol, no orientation designated as "999"				

Table 2. Data Collected on Five Abert's Towhee Nests Using BBIRD Field Protocol.

LITERATURE CITED

Martin, T.E., C.R. Paine, C.J. Conway, W.M. Hochachka, P. Allen, and W. Jenkins. 1997. BBIRD Field Protocol. Montana Cooperative Wildlife Research Unit, University of Montana, Missoula, Montana, USA. Accessed 7/24/09 from <http://www.umt.edu/BBIRD/protocol/nestloc.htm>

APPENDIX A

Locations of Abert's Towhees and Gila Woodpeckers.

Many of these locations are on private land which requires prior permission to enter. Respect private land ownership in New Mexico.

Abert's Towhee New Mexico location database

<u>Name</u>	<u>When Seen</u>	<u>Max Count</u>	<u>Comments</u>	<u>Observer</u>	<u>Location</u>	<u>NMOS Vol</u>	<u>NMOS No</u>	<u>NMOS See Christmas</u>	<u>AFN Vol</u>	<u>AFN No</u>
Abert's Towhee	1/1/1928	1	[FM Bailey 1928] No specific dates; It occurs.....	Edward Goldman	Redrock					
Abert's Towhee	1/1/1928	1	[FM Bailey 1928] No specific dates; It occurs.....	Florence Bailey	Cliff					
Abert's Towhee	1/1/1928	1	[FM Bailey 1928] No specific dates; It occurs.....	Edward Goldman	Cliff					
Abert's Towhee	1/1/1928	1	[FM Bailey 1928] No specific dates; many years	Frank Stevens	Cliff					
Abert's Towhee	5/15/1928	1	[FM Bailey 1928] It was common May 15, 1928, James Ligon		Redrock					
Abert's Towhee	5/15/1928	4	[NM Birds 1961] the author located 4 nests cont James Ligon		Redrock					
Abert's Towhee	12/25/1953	19	[53rd CBC - Karl W. Haller only observer]	Karl Haller	Viriden			53	7	2
Abert's Towhee	7/17/1962	2		James Sands	Redrock	0		1		
Abert's Towhee	5/3/1969	3	A total of 53 was counted in the lower Gila Valle	NMOS	Gila River ¹	8		1		
Abert's Towhee	5/3/1969	50	A total of 53 was counted in the lower Gila Valle	NMOS	Redrock	8		1		
Abert's Towhee	5/3/1969	53	[Gila River Spring Count RAF Compiler] 51 Red Ralph Fisher		Gila River Valley					
Abert's Towhee	12/31/1969	16		Larry Malone	Redrock					
Abert's Towhee	5/9/1970	4	[Gila River Spring Count RAF Compiler] 1 Cliff/C Ralph Fisher		Gila River Valley					
Abert's Towhee	5/8/1971	16	[Gila River Bird Census RAF compiler] 3 Redroc Ralph Fisher		Gila River Valley					
Abert's Towhee	5/6/1972	15	[Gila River Bird Census RAF compiler] 10 Redrc Ralph Fisher		Gila River Valley					
Abert's Towhee	6/29/1972	10	10 near Redrock 6/29 - 30 (JPH)	John Hubbard	Redrock	11		2		
Abert's Towhee	3/17/1974	18		Bruce Hayward	Redrock	13		1		
Abert's Towhee	5/4/1974	16		Bruce Hayward	Redrock	13		1		
Abert's Towhee	5/4/1974	16	[Gila River Spring Count RAF compiler] no spec Ralph Fisher		Gila River Valley					
Abert's Towhee	5/3/1975	16	[Gila River Bird Census RAF compiler] 1 above Ralph Fisher		Gila River Valley					
Abert's Towhee	5/1/1976	10	[Gila River Spring Count RAF compiler] no spec Ralph Fisher		Gila River Valley					
Abert's Towhee	5/7/1977	13	[Gila River Spring Count RAF compiler] no spec Ralph Fisher		Gila River Valley					
Abert's Towhee	1/1/1978	1	[Revised Checklist 1978] resident in the lower G John Hubbard		Gila River Valley					
Abert's Towhee	1/1/1978	1	[Revised Checklist 1978] resident in the lower G John Hubbard		Cliff					
Abert's Towhee	5/6/1978	12	[Gila River Spring Count RAF compiler] no spec Ralph Fisher		Gila River Valley					
Abert's Towhee	5/5/1979	21	[Gila River Spring Count RAF compiler] no spec Ralph Fisher		Gila River Valley					
Abert's Towhee	5/3/1980	1	[Gila River Bird Census RAF compiler] no spec Ralph Fisher		Gila River Valley					
Abert's Towhee	8/8/1980	3	along the Gila Valley near Mogollon Creek north John Hubbard		Cliff	19		2		
Abert's Towhee	8/8/1980	3	along the Gila Valley near Mogollon Creek north John Hubbard		Cliff	19		2		
Abert's Towhee	5/2/1981	1	[Gila River Spring Count RAF Compiler] no spec Ralph Fisher		Gila River Valley					
Abert's Towhee	5/15/1981	7	7 in the Cliff area north of Mogollon Creek; 5/15 John Egbert		Cliff	20		2		
Abert's Towhee	6/1/1981	55		6/1/2005 John Egbert	Redrock	20		2		
Abert's Towhee	6/10/1981	29		John Egbert	Viriden	20		2		
Abert's Towhee	1/2/1982	7	GR CBC	John Egbert	Riverside	21		1		
Abert's Towhee	1/2/1982	7	[CBC 82 36:4 Ralph Fisher, compiler]	Ralph Fisher	Riverside					
Abert's Towhee	5/8/1982	4	[Gila River Spring Count RAF Compiler] no spec Ralph Fisher	Ralph Fisher	Riverside					
Abert's Towhee	5/7/1983	3	[Gila River Spring Count RAF Compiler] no spec Ralph Fisher		Gila River Valley					
Abert's Towhee	5/4/1985	6	[Gila River Spring Count RAF Compiler] no spec Ralph Fisher		Gila River Valley					
Abert's Towhee	4/12/1986	2		Lois Herrmann	Gila River Valley					
Abert's Towhee	5/3/1986	7	on GR Spring Count	Ralph Fisher	Redrock	25		2		
Abert's Towhee	5/3/1986	7	[Gila River Bird Census RAF compiler] no spec Ralph Fisher	Ralph Fisher	Gila River ¹	25		2		
Abert's Towhee	5/2/1987	3	[Gila River Spring Count RAF Compiler] no spec Ralph Fisher		Gila River Valley					
Abert's Towhee	5/7/1988	6	[Gila River Spring Count RAF Compiler] no spec Ralph Fisher		Gila River Valley					
Abert's Towhee	5/6/1989	9	[Gila River Spring Count RAF Compiler] no spec Ralph Fisher		Gila River Valley					
								82	36	4

Abert's Towhee New Mexico location database

<u>Name</u>	<u>When Seen</u>	<u>Max Count</u>	<u>Comments</u>	<u>Observer</u>	<u>Location</u>	<u>NMOS Vol</u>	<u>NMOS No</u>	<u>NMOS See Christmas</u>	<u>AFN Vol</u>	<u>AFN No</u>
Abert's Towhee	12/30/1989	1	near Riverside was northerly. RAF+	Ralph Fisher	Riverside	29	1			
Abert's Towhee	12/30/1989	1	[CBC 90 44:4 Ralph Fisher]	Ralph Fisher	Riverside	30	2	90	44	4
Abert's Towhee	5/4/1991	1	on GR Spring Count	Ralph Fisher	Gila River					
Abert's Towhee	5/4/1991	1	Only one Abert's Towhee was in the Gila Valley	Ralph Fisher	Gila River Valley					45
Abert's Towhee	5/4/1991	1	[Gila River Spring Count RAF Compiler] no spec	Ralph Fisher	Gila River Valley					3
Abert's Towhee	12/28/1991	4	[CBC 92 46:4 Ralph Fisher]	Ralph Fisher	Riverside	31	2	92	46	4
Abert's Towhee	4/18/1992	3	from Redrock to Virden	Cathie Sandell	Redrock					
Abert's Towhee	4/18/1992	3	3 Abert's Towhees were between Redrock and	Cathie Sandell	Redrock					46
Abert's Towhee	5/1/1992	2	[Gila River Spring Count RAF Compiler, no spec	Ralph Fisher	Gila River Valley	32	1			3
Abert's Towhee	1/2/1993	3	on GR CBC	Ralph Fisher	Riverside	32				
Abert's Towhee	1/2/1993	3	Abert's Towhees included 3 near Cliff Jan 2 (RF	Ralph Fisher	Cliff					47
Abert's Towhee	1/2/1993	3	[CBC 93 47:4 Ralph Fisher, compiler]	Ralph Fisher	Riverside	32	4	93	47	4
Abert's Towhee	2/24/1993	10		Christopher Rustay	Redrock					
Abert's Towhee	2/24/1993	10		Patricia Snider	Redrock	32	1			
Abert's Towhee	2/24/1993	10	10 or less at Redrock Feb 24 (CR, PS)	Christopher Rustay	Redrock	32	1			47
Abert's Towhee	2/24/1993	10	10 or less at Redrock Feb 24 (CR, PS)	Christopher Rustay	Redrock	32	1			47
Abert's Towhee	2/24/1993	10	10 or less at Redrock Feb 24 (CR, PS)	Patricia Snider	Redrock					2
Abert's Towhee	5/1/1993	1	[Gila River Spring Count RAF Compiler, no know	Ralph Fisher	Redrock					2
Abert's Towhee	9/29/1993	5	Up to 5 at Redrock WMA 9 / 29 - 30	John Hubbard	Gila River Valley	32	4			
Abert's Towhee	9/29/1993	5	Up to 5 at Redrock WMA 9 / 29 - 30	Robert Dickerman	Redrock	32	4			
Abert's Towhee	9/29/1993	5	Up to 5 Abert's were at Redrock Sept 29-30 (JP	John Hubbard	Redrock					48
Abert's Towhee	9/29/1993	5	Up to 5 Abert's were at Redrock Sept 29-30 (JP	Robert Dickerman	Redrock					48
Abert's Towhee	9/29/1993	5	Up to 5 Abert's were at Redrock Sept 29-30 (JP	Robert Dickerman	Redrock					48
Abert's Towhee	12/30/1993	4	[CBC 94 48:4 Ralph Fisher]	Ralph Fisher	Riverside			94	48	4
Abert's Towhee	3/12/1994	14	at least 14	Christopher Rustay	Redrock	33	2			
Abert's Towhee	3/12/1994	14	Encouraging were at least 14 Abert's Towhees	Christopher Rustay	Redrock					48
Abert's Towhee	5/1/1994	7	[Gila River Spring Count RAF Compiler, no know	Ralph Fisher	Gila River Valley					3
Abert's Towhee	5/1/1994	6	3 pairs in the Lower Gila River Box Canyon; 7/1:	William Maynard	Lower Gila	33	3			
Abert's Towhee	7/15/1994	6	Highs for Abert's Towhees were 3 pairs in the L	William Maynard	Lower Gila Box					48
Abert's Towhee	7/15/1994	3	[Gila River Spring Count RAF Compiler, no know	Ralph Fisher	Gila River Valley					5
Abert's Towhee	5/1/1995	4	[CBC 96 50:4 Ralph Fisher]	Ralph Fisher	Riverside			96	50	4
Abert's Towhee	12/30/1995	4	[Gila River Spring Count RAF Compiler, no know	Ralph Fisher	Gila River Valley					
Abert's Towhee	5/1/1996	4	[Gila River Spring Count RAF Compiler, no know	Ralph Fisher	Gila River Valley					
Abert's Towhee	5/1/1997	4	[Gila River Spring Count RAF Compiler, no know	Ralph Fisher	Gila River Valley					
Abert's Towhee	6/1/1997	1	no specific numbers; in the Cliff/Gila area of the	Dale Zimmerman	Cliff-Gila V.	36	3			
Abert's Towhee	6/1/1997	1	No specific numbers or dates; only a small popu	Dale Zimmerman	Cliff/Gila					5
Abert's Towhee	6/1/1997	1	No specific numbers or dates; a nest in late Jun	Dale Zimmerman	Cliff/Gila					5
Abert's Towhee	6/1/1997	1	no specific date, reported in territories	Scott Stoleson	Fort West Ditch					
Abert's Towhee	6/1/1997	2	SE 1, no specific dates, reported in number of	Scott Stoleson	U Bar Ranch					
Abert's Towhee	6/1/1997	1	SW Stringer, no specific dates, reported in num	Scott Stoleson	U Bar Ranch					
Abert's Towhee	6/22/1997	1	no specific numbers or dates; a nest found in	lat Scott Stoleson	Gila River	36	3			5
Abert's Towhee	7/1/1997	2	No specific numbers or dates; a pair in early Jul	Dale Zimmerman	Cliff/Gila	36	3			
Abert's Towhee	7/1/1997	2	A pair in early July was feeding fledgling towhee	Scott Stoleson	Cliff/Gila	37	2			
Abert's Towhee	3/28/1998	21	a remarkable 21 reported	Larry Malone	Redrock					3
Abert's Towhee	3/28/1998	21	A remarkable 21 Abert's Towhees were report	Larry Malone	Redrock					
Abert's Towhee	5/1/1998	32	[Gila River Spring Count RSS Compiler] 14 Vird	Roland Shook	Gila River Valley					
Abert's Towhee	5/1/1998	32	[Gila River Spring Count RAF Compiler, no know	Ralph Fisher	Gila River Valley					

Abert's Towhee New Mexico location database

<u>Name</u>	<u>When Seen</u>	<u>Max Count</u>	<u>Comments</u>	<u>Observer</u>	<u>Location</u>	<u>NMOS Vol</u>	<u>NMOS No</u>	<u>See Christmas</u>	<u>AFN Vol</u>	<u>AFN No</u>
Abert's Towhee	6/1/1998	1	no specific dates, reported in number of territories	Scott Stoleson	Fort West Ditch					
Abert's Towhee	6/1/1998	1	NW 1, no specific dates, reported in number of territories	Scott Stoleson	U Bar Ranch					
Abert's Towhee	6/1/1998	1	SE 1, no specific dates, reported in number of territories	Scott Stoleson	U Bar Ranch					
Abert's Towhee	6/1/1998	1	SW Stringer, no specific dates, reported in number of territories	Scott Stoleson	U Bar Ranch					
Abert's Towhee	1/2/1999	4	[CBC 99 Roland Shook, compiler]	Roland Shook	Riverside					99
Abert's Towhee	1/4/1999	6		Roland Shook	Runyan's					
Abert's Towhee	1/18/1999	1		Roland Shook	Runyan's					
Abert's Towhee	2/8/1999	2		Roland Shook	Runyan's					
Abert's Towhee	2/15/1999	5		Roland Shook	Runyan's					
Abert's Towhee	2/22/1999	4		Roland Shook	Runyan's					
Abert's Towhee	3/8/1999	1		Roland Shook	Runyan's					
Abert's Towhee	3/23/1999	1		Roland Shook	Runyan's					
Abert's Towhee	3/29/1999	4		Roland Shook	Runyan's					
Abert's Towhee	4/5/1999	6		Roland Shook	Runyan's					
Abert's Towhee	4/12/1999	1		Roland Shook	Runyan's					
Abert's Towhee	4/19/1999	6		Roland Shook	Runyan's					
Abert's Towhee	5/1/1999	31	on Gila Valley Count; RSS+	Roland Shook	Gila River ¹		38	2		
Abert's Towhee	5/1/1999	31	A high 31 Abert's Towhees were tallied on the Gila River Valley	Roland Shook	Cliff					53
Abert's Towhee	5/1/1999	31	[Gila River Spring Count RSS Compiler] 10 Virid	Roland Shook	Gila River Valley					3
Abert's Towhee	5/3/1999	8		Roland Shook	Runyan's					
Abert's Towhee	5/10/1999	1		Roland Shook	Runyan's					
Abert's Towhee	5/17/1999	2		Roland Shook	Runyan's					
Abert's Towhee	5/24/1999	7		Roland Shook	Runyan's					
Abert's Towhee	5/31/1999	5		Roland Shook	Runyan's					
Abert's Towhee	6/1/1999	1	NE 1, no specific dates, reported in number of territories	Scott Stoleson	U Bar Ranch					
Abert's Towhee	6/1/1999	1	NW 1, no specific dates, reported in number of territories	Scott Stoleson	U Bar Ranch					
Abert's Towhee	6/1/1999	1	SE 1, no specific dates, reported in number of territories	Scott Stoleson	U Bar Ranch					
Abert's Towhee	6/1/1999	1	SW Stringer, no specific dates, reported in number of territories	Scott Stoleson	U Bar Ranch					
Abert's Towhee	6/7/1999	4		Roland Shook	Runyan's					
Abert's Towhee	1/1/2000	1	[CBC 100 Roland Shook, compiler]	Roland Shook	Riverside					100
Abert's Towhee	2/19/2000	1		Larry Malone	Redrock					
Abert's Towhee	5/1/2000	2	[Location also includes Lower Box]	Robert Willcox	Viriden					
Abert's Towhee	5/13/2000	1	1 banded near Cliff	Scott Stoleson	Cliff		39	2		
Abert's Towhee	5/27/2000	4	only 4 found at Redrock where habitat was heavily disturbed	Christopher Rustay	Redrock		39	2		
Abert's Towhee	6/2/2000	1	no specific numbers; 11 active nests were found	Scott Stoleson	Gila River ¹		39	4		
Abert's Towhee	7/7/2000	1		Roland Shook	Gila Bird Area					
Abert's Towhee	12/30/2000	4	[CBC 101 Roland Shook]	Roland Shook	Riverside					101
Abert's Towhee	5/5/2001	15	[Gila River Spring Count RSS Compiler] 15 Virid	Roland Shook	Gila River Valley					
Abert's Towhee	5/21/2001	1		Roland Shook	Gila Bird Area					
Abert's Towhee	5/4/2002	10	[Gila River Spring Count RSS Compiler] 7 Virid	Roland Shook	Gila River Valley					
Abert's Towhee	5/14/2002	1		Roland Shook	Gila Bird Area					
Abert's Towhee	12/28/2002	2	only two were found in the Cliff-Gila Valley; (RS)	Roland Shook	Cliff/Gila		42	1		
Abert's Towhee	12/28/2002	2	[CBC 103 from web Roland Shook]	Roland Shook	Riverside					103
Abert's Towhee	3/15/2003	6		Larry Malone	Viriden					

Abert's Towhee New Mexico location database

<u>Name</u>	<u>When Seen</u>	<u>Max Count</u>	<u>Comments</u>	<u>Observer</u>	<u>Location</u>	<u>NMOS Vol</u>	<u>NMOS No</u>	<u>NMOS See Christmas</u>	<u>AFN Vol</u>	<u>AFN No</u>
Abert's Towhee	3/15/2003	6		Larry Malone	Redrock					
Abert's Towhee	6/17/2003	2	a pair nest building (included in the 5 pairs in the Cliff-Kathy Brodhead	Kathy Brodhead	Cliff/Gila	42	3			
Abert's Towhee	6/17/2003	10	At least 5 Abert's Towhee pairs were in the Cliff-Kathy Brodhead	Kathy Brodhead	Cliff-Gila Valley				57	4
Abert's Towhee	7/7/2003	2	a pair incubating (included in 5 pairs in the Cliff-Kathy Brodhead	Kathy Brodhead	Cliff/Gila	42	3			
Abert's Towhee	7/7/2003	2	At least 5 Abert's Towhee pairs were in the Cliff-Kathy Brodhead	Kathy Brodhead	Cliff-Gila Valley				57	4
Abert's Towhee	5/20/2004	2	SE 2	Kathy Brodhead	U Bar Ranch					
Abert's Towhee	5/20/2004	2	SE 3	Kathy Brodhead	U Bar Ranch					
Abert's Towhee	5/29/2004	2	SW 1 nest building	Kathy Brodhead	U Bar Ranch					
Abert's Towhee	5/29/2004	2	SW 2	Kathy Brodhead	U Bar Ranch					
Abert's Towhee	5/29/2004	2	SW 3	Kathy Brodhead	U Bar Ranch					
Abert's Towhee	5/29/2004	2	SW 4	Kathy Brodhead	U Bar Ranch					
Abert's Towhee	5/29/2004	2	SE 2 nesting pair	Kathy Brodhead	U Bar Ranch					
Abert's Towhee	6/6/2004	2	SW 1	Kathy Brodhead	U Bar Ranch					
Abert's Towhee	6/12/2004	2	SW 2	Kathy Brodhead	U Bar Ranch					
Abert's Towhee	6/12/2004	1	SW 3	Kathy Brodhead	U Bar Ranch					
Abert's Towhee	6/12/2004	2	SW 4	Kathy Brodhead	U Bar Ranch					
Abert's Towhee	7/3/2004	1	SE 3	Kathy Brodhead	U Bar Ranch					
Abert's Towhee	7/4/2004	2	SW 1	Kathy Brodhead	U Bar Ranch					
Abert's Towhee	7/4/2004	2	SW 2, flushes from nest	Kathy Brodhead	U Bar Ranch					
Abert's Towhee	7/4/2004	2	SW 3	Kathy Brodhead	U Bar Ranch					
Abert's Towhee	1/1/2005	3	[CBC 105 from web Roland Shook, compiler]	Roland Shook	Riverside					105
Abert's Towhee	5/7/2005	8	[Gila River Spring Count RSS Compiler] 8 Virde	Roland Shook	Gila River Valley					
Abert's Towhee	5/22/2005	2	SW 1	Kathy Brodhead	U Bar Ranch					
Abert's Towhee	5/29/2005	1	SE 2	Kathy Brodhead	U Bar Ranch					
Abert's Towhee	6/5/2005	2	SW 2	Kathy Brodhead	U Bar Ranch					
Abert's Towhee	6/11/2005	1	SE 3	Kathy Brodhead	U Bar Ranch					
Abert's Towhee	6/26/2005	2	SW 2	Kathy Brodhead	U Bar Ranch					
Abert's Towhee	7/3/2005	1	SE 3	Kathy Brodhead	U Bar Ranch					
Abert's Towhee	5/11/2006	1	Bio-Inventary of the Gila River Project	Roland Shook	Mogollon Creek					
Abert's Towhee	5/22/2006	1	Bio-Inventary of the Gila River Project	Roland Shook	Upper Runyan's Property					
Abert's Towhee	5/27/2006	2	SW 2	Kathy Brodhead	U Bar Ranch					
Abert's Towhee	5/30/2006	1	SE 0	Kathy Brodhead	U Bar Ranch					
Abert's Towhee	6/10/2006	3	SW 1, 3 obs simultaneously chasing and vocaliz	Kathy Brodhead	U Bar Ranch					
Abert's Towhee	6/15/2006	1	SE 1	Kathy Brodhead	U Bar Ranch					
Abert's Towhee	7/4/2006	1	SW 3	Kathy Brodhead	U Bar Ranch					
Abert's Towhee	7/10/2006	1	SE 2	Kathy Brodhead	U Bar Ranch					
Abert's Towhee	3/20/2007	3		Roland Shook	Gila River Valley					
Abert's Towhee	3/20/2007	1		Roland Shook	Gila River Valley					
Abert's Towhee	5/12/2007	2	Bio-Inventary of the Gila River Project	Roland Shook	Lower Nichol's Canyon					
Abert's Towhee	5/12/2007	1	Bio-Inventary of the Gila River Project	Roland Shook	Fisherman's Point					
Abert's Towhee	5/23/2007	1	Bio-Inventary of the Gila River Project	Roland Shook	Upper Runyan's Property					
Abert's Towhee	6/15/2007	1	[WiFI census] at 0724469 3633696 on west sid	Roland Shook	Gila Bird Area - Lower					
Abert's Towhee	6/15/2007	1	[0605 - 0705, WiFI Survey, Lower] vocalization	Roland Shook	Gila Bird Area					
Abert's Towhee	6/18/2007	2	Bio-Inventary of the Gila River Project	Roland Shook	Fisherman's Point					

Abert's Towhee New Mexico location database

<u>Name</u>	<u>When Seen</u>	<u>Max Count</u>	<u>Comments</u>	<u>Observer</u>	<u>Location</u>	<u>NMOS Vol</u>	<u>NMOS No</u>	<u>NMOS See</u>	<u>Christmas</u>	<u>AFN Vol</u>	<u>AFN No</u>
Abert's Towhee	6/30/2007	1	[With Roxanna Wright]	Roland Shook	Fort West Ditch						
Abert's Towhee	6/30/2007	1	with Roland Shook	Roxanna Wright	Fort West Ditch						
Abert's Towhee	7/13/2007	2	Bio-Inventories of the Gila River Project	Roland Shook	Upper Nichol's Canyon						
Abert's Towhee	7/13/2007	1	Bio-Inventories of the Gila River Project	Roland Shook	Fisherman's Point						
Abert's Towhee	7/13/2007	3	Bio-Inventories of the Gila River Project	Roland Shook	Redrock						
Abert's Towhee	7/24/2007	3	Above and below Highway 211 Bridge on private	Roland Shook	Cliff						
Abert's Towhee	12/12/2007	6	Jerry Bird and Gene Lewis	Eugene Lewis	Redrock						
Abert's Towhee	12/12/2007	6	Jerry Bird and Gene Lewis	Jerry Bird	Redrock						
Abert's Towhee	12/29/2007	2	[108 CBC RSS Compiler]	Roland Shook	Riverside						
Abert's Towhee	2/28/2008	7		Roland Shook	Lower Nichol's Canyon						
Abert's Towhee	3/5/2008	1		Roland Shook	Spring on Bluff						
Abert's Towhee	3/28/2008	6		Roland Shook	Lower Nichol's Canyon						
Abert's Towhee	3/28/2008	11		Roland Shook	Redrock						
Abert's Towhee	4/2/2008	7		Roland Shook	Runyan's						
Abert's Towhee	4/21/2008	5	[with Denise Friedrick]	Roland Shook	Agnew						
Abert's Towhee	4/23/2008	2	[with Denise Friedrick] greeting, across from Rui	Roland Shook	U Bar Ranch						
Abert's Towhee	4/28/2008	5	[with Denise Friedrick]	Roland Shook	Fisherman's Point						
Abert's Towhee	4/28/2008	2	[with Denise Friedrick]	Roland Shook	Redrock						
Abert's Towhee	4/30/2008	1	[with Denise Friedrick]	Roland Shook	Redrock						
Abert's Towhee	5/7/2008	1	[with Denise Friedrick] singing, SW 1, recorded	Roland Shook	Lower Nichol's Canyon						
Abert's Towhee	5/8/2008	4	[with Denise Friedrick] includes 1 pair at Virden	Roland Shook	U Bar Ranch						
Abert's Towhee	5/10/2008	2	[with Denise Friedrick]	Roland Shook	Virden						
Abert's Towhee	5/10/2008	2	[with Denise Friedrick - Sp Migration Count]	Roland Shook	Lower Nichol's Canyon						
Abert's Towhee	5/12/2008	2	SW 1, 1 pair	Denise Friedrick	Little's Property						
Abert's Towhee	5/15/2008	2	SE 2, pair at nest with 4 eggs	Denise Friedrick	U Bar Ranch						
Abert's Towhee	5/15/2008	2	singing and foraging in SW 4. At least one bird f	Denise Friedrick	Runyan's						
Abert's Towhee	5/19/2008	2	[with Denise Friedrick] greeting call heard	Roland Shook	U Bar Ranch						
Abert's Towhee	5/20/2008	2	[with Denise Friedrick] giving greeting call	Roland Shook	Fort West Ditch						
Abert's Towhee	5/22/2008	2	[with Denise Friedrick] SE 2, pair with nest foru	Roland Shook	Fort West Ditch						
Abert's Towhee	5/22/2008	2	[with Denise Friedrick] SE 4, pair with nest foru	Roland Shook	Runyan's						
Abert's Towhee	5/22/2008	2	SE 2, vocalization near old Common Black-Haw	Denise Friedrick	U Bar Ranch						
Abert's Towhee	5/24/2008	2	SW 4, vocalizations, nest found	Denise Friedrick	U Bar Ranch						
Abert's Towhee	5/30/2008	2	SE 2, with food at nest, at least 3 nestlings, vo	Denise Friedrick	Runyan's						
Abert's Towhee	5/30/2008	2	SW 4, vocalizing at nest	Denise Friedrick	U Bar Ranch						
Abert's Towhee	12/27/2008	2	[109 CBC RSS Compiler Route 4]	David Beatty	Riverside						
Abert's Towhee	12/27/2008	2	[Gila River CBC (109th), R Shook Compiler] Da	Roland Shook	Riverside						
Abert's Towhee	1/28/2009	9		Roland Shook	Little's Property						
Abert's Towhee	1/29/2009	8		Roland Shook	Little's Property						
Abert's Towhee	2/19/2009	7		Roland Shook	Little's Property						
Abert's Towhee	2/19/2009	5		Roland Shook	Little's Property						
Abert's Towhee	2/24/2009	10		Roland Shook	Little's Property						
Abert's Towhee	2/24/2009	9		Roland Shook	Nichol's Canyon						
Abert's Towhee	3/3/2009	4		Roland Shook	Nichol's Canyon						
Abert's Towhee	3/6/2009	9		Roland Shook	Nichol's Canyon						

Abert's Towhee New Mexico location database

<u>Name</u>	<u>When Seen</u>	<u>Max Count</u>	<u>Comments</u>	<u>Observer</u>	<u>Location</u>	<u>NMOS Vol</u>	<u>NMOS No</u>	<u>NMOS See</u>	<u>Christmas</u>	<u>AFN Vol</u>	<u>AFN No</u>
Abert's Towhee	3/10/2009	2		Roland Shook	Nichol's Canyon						
Abert's Towhee	3/12/2009	15		Roland Shook	Little's Property						
Abert's Towhee	3/17/2009	3		Roland Shook	Nichol's Canyon						
Abert's Towhee	3/19/2009	8		Roland Shook	Little's Property						
Abert's Towhee	3/24/2009	1		Roland Shook	Nichol's Canyon						
Abert's Towhee	3/26/2009	17		Roland Shook	Little's Property						
Abert's Towhee	3/31/2009	6		Roland Shook	Nichol's Canyon						
Abert's Towhee	4/2/2009	12		Roland Shook	Little's Property						
Abert's Towhee	4/7/2009	4		Roland Shook	Nichol's Canyon						
Abert's Towhee	4/9/2009	10		Roland Shook	Little's Property						
Abert's Towhee	4/14/2009	4		Roland Shook	Nichol's Canyon						
Abert's Towhee	4/16/2009	10		Roland Shook	Little's Property						
Abert's Towhee	4/21/2009	1		Roland Shook	Nichol's Canyon						
Abert's Towhee	4/28/2009	2		Roland Shook	Nichol's Canyon						
Abert's Towhee	5/7/2009	5		Roland Shook	Little's Property						
Abert's Towhee	5/18/2009	2	NE4, GPS NE4AT1, NE4AT2	Roland Shook	Agnew						
Abert's Towhee	5/19/2009	1	[with Angela Slaugh] SE4 (Slovics), GPS SE4AT1	Roland Shook	Slovics Property						
Abert's Towhee	5/19/2009	1	[with Angela Slaugh] SE2, GPS SE2AT1	Roland Shook	Runyan's						
Abert's Towhee	5/19/2009	1	[with Angela Slaugh] SE3, GPS SE3AT1	Roland Shook	Runyan's						
Abert's Towhee	5/29/2009	1	[with Angela Slaugh] PDW, PDWAT1, below mo	Roland Shook	U Bar Ranch						
Abert's Towhee	6/8/2009	1	[with Angela Slaugh] NE4, GPS NE4AB3	Roland Shook	U Bar Ranch						
Abert's Towhee	6/11/2009	2	[with Angela D Slaugh] in SE2, GPS SE2AT2 &	Roland Shook	U Bar Ranch						
Abert's Towhee	6/11/2009	1	[with Angela D Slaugh] SE3, GPS SE3AT1	Roland Shook	U Bar Ranch						

Gila Woodpecker New Mexico location database

Name	When Seen	Max Count	Comments	Observer	Location	NMOS_Vol	NMOS_No	NMOS_See	Christmas	AFN_Vol	AFN_No
Gila Woodpecker	9/27/1908	1	[FM Bailey 1928] It has been found common the last week of September	Edward Goldman	Redrock						
Gila Woodpecker	10/6/1908	1	[FM Bailey 1928] It ranges from Arizona to New Mexico as far as the tow Florence	Bailey	Gila						
Gila Woodpecker	4/8/1916	1	[FM Bailey 1928] It was observed only in the extreme southwestern part	James Ligon	Gila River Valley						
Gila Woodpecker	5/13/1924	1	[FM Bailey 1928] The species was found common and nesting	May 13, Ralph Kellogg	Redrock						
Gila Woodpecker	12/25/1953	5	[53rd CBC - Karl W. Haller only observer]	Karl Haller	Virden				53	7	2
Gila Woodpecker	1/1/1961	2	[NM Birds 1961] 10 April, no year. A pair was observed preparing a nest	James Ligon	Redrock						
Gila Woodpecker	4/1/1961	2	Two Gila Woodpeckers were found throughout the period, (DAZ), at Mar	Date Zimmerman	Mangas Springs					15	4
Gila Woodpecker	6/1/1962	1	Present throughout period at Cliff and Redrock	James Sands	Redrock	0		1			
Gila Woodpecker	6/1/1962	1	Present throughout period at Cliff and Redrock	James Sands	Cliff	0		1			
Gila Woodpecker	6/1/1966	2	No specific dates or locations; 2 nests were reported from Grant Co.	(AF Allan Nelson	Grant Cour	5	2				
Gila Woodpecker	6/1/1966	2	No specific dates or locations; 2 nests were reported from Grant Co.	(AF Bill Rogers	Grant Cour	5	2				
Gila Woodpecker	5/12/1967	10	over 10 were counted at Cliff 5/12 to 5/14 and one nest found. PRS et al	Patricia Snider	Cliff	6	1				
Gila Woodpecker	6/1/1967	1	No specific dates or location; 1 nest was reported from Grant Co.	(RAF) Ralph Fisher	Grant Cour	2	2				
Gila Woodpecker	12/21/1967	1	[Cliff CBC 68 22:2]	John Hubbard	Cliff	2	2		68	22	2
Gila Woodpecker	6/1/1968	1	No specific dates or locations; Nesting was reported in Grant County	(R) John Hubbard	Grant Cour	7	2				
Gila Woodpecker	6/1/1968	1	No specific dates or locations; Nesting was reported in Grant County	(R) Ralph Fisher	Grant Cour	7	2				
Gila Woodpecker	6/1/1968	1	No specific dates or locations; Nesting was reported in Hidalgo county	Dale Zimmerman	Hidalgo Co	7	2				
Gila Woodpecker	5/3/1969	5	A maximum of 51 was seen in the Gila Valley on 5/3, 46 if which were in	NMOS	Gila River	8	1				
Gila Woodpecker	5/3/1969	46	The numbers of this species should be watched carefully to detect any	p NMOS	Redrock	8	1				
Gila Woodpecker	5/3/1969	46	[Gila River Spring Count RAF Compiler] 5 Cliff/Gila Valley, 31 North	Rec Ralph Fisher	Gila River Valley						
Gila Woodpecker	12/31/1969	8		Larry Malone	Redrock						
Gila Woodpecker	5/9/1970	9	NMOS; only 9 were counted in the Gila Valley compared to the 51 a	yea NMOS	Redrock	9	1				
Gila Woodpecker	5/9/1970	9	[Gila River Spring Count RAF Compiler] 1 Cliff/Gila Valley, 4 North	Redr Ralph Fisher	Gila River						
Gila Woodpecker	5/8/1971	20	counted in the Gila Valley from Cliff southward	SWAS	Gila River	10	1				
Gila Woodpecker	5/8/1971	20	[Gila River Bird Census RAF compiler] 3 Cliff/Gila Bridge, 7	Redrock, 10 Ralph Fisher	Gila River Valley						
Gila Woodpecker	5/6/1972	3	only 3 reported in Gila Valley near Redrock	SWAS	Redrock	11	1				
Gila Woodpecker	5/6/1972	3	[Gila River Bird Census RAF compiler] 3	Redrock	Gila River Valley						
Gila Woodpecker	6/1/1972	1	none seen north of Cliff 6/1-12 (JPH)	John Hubbard	Cliff	11	2				
Gila Woodpecker	6/29/1972	8	8 at Redrock on 6/29 to 6/30 where only 3 were found on the	Spring Co. John Hubbard	Redrock	11	2				
Gila Woodpecker	3/1/1973	2		Ralph Fisher	Cliff	12	1				
Gila Woodpecker	4/17/1973	12	pairs studied in Gila Woodpecker Agonistic Behavior. March - July, 197	Gene Brenowitz	Redrock						
Gila Woodpecker	4/17/1973	18	9 pairs studied from March 1973 to March 1974. An Analysis of Gila	Wo Gene Brenowitz	Redrock						
Gila Woodpecker	5/1/1973	4	[Gila River Spring Count RAF? compiler, date unknown]	Ralph Fisher	Gila River Valley						
Gila Woodpecker	12/15/1973	2	north of Cliff, SO+	Stuart O'Byrne	Cliff	13	1			74	2
Gila Woodpecker	12/15/1973	3	[CBC 74 28:2 M&S O'Byrne]	Stuart O'Byrne	Riverside						
Gila Woodpecker	5/4/1974	17	between Cliff and Redrock	Bruce Hayward	Cliff	13	1				
Gila Woodpecker	5/4/1974	17	[Gila River Spring Count RAF compiler] no specific location	Ralph Fisher	Gila River Valley						
Gila Woodpecker	12/14/1974	5	[CBC 75 29:2 M&S O'Byrne]	Stuart O'Byrne	Riverside					75	29
Gila Woodpecker	5/3/1975	11	[Gila River Bird Census RAF compiler] 4 Cliff/Gila Valley, 7	Redrock	Gila River Valley						
Gila Woodpecker	5/1/1976	10	[Gila River Spring Count RAF compiler no specific date] no specific	local Ralph Fisher	Gila River Valley						
Gila Woodpecker	12/18/1976	5	[CBC 77 31:4 R Fisher]	Ralph Fisher	Riverside					77	31
Gila Woodpecker	5/7/1977	14	[Gila River Spring Count RAF compiler] no specific locations	Ralph Fisher	Gila River Valley						
Gila Woodpecker	12/17/1977	4	[CBC 78 32:4 R Fisher]	Ralph Fisher	Riverside					78	32
Gila Woodpecker	1/1/1978	4	[Revised Checklist 1978] resident in the lower *GILA VALLEY	(north to t John Hubbard	Gila River Valley						
Gila Woodpecker	5/6/1978	4	[Gila River Spring Count RAF compiler] no specific locations	Ralph Fisher	Gila River Valley						
Gila Woodpecker	12/29/1978	1	Single Gila Woodpecker at Glenwood Dec. 29 (JPH) was out of their	nor John Hubbard	Pleasanton	18	1				3
Gila Woodpecker	5/5/1979	27	[Gila River Spring Count RAF compiler] no specific locations	Ralph Fisher	Glenwood						
Gila Woodpecker	12/29/1979	1	[CBC 80 34:4 Ralph Fisher]	Ralph Fisher	Gila River Valley						
Gila Woodpecker	5/3/1980	2	[Gila River Bird Census RAF compiler] no specific locations	Ralph Fisher	Riverside					80	4
Gila Woodpecker	1/3/1981	3	[CBC 81 35:4 Ralph Fisher]	Ralph Fisher	Gila River Valley						
Gila Woodpecker	3/9/1981	1	heard	John Hubbard	Riverside					81	4
Gila Woodpecker	3/13/1981	1	heard	John Hubbard	Pleasanton	20	1				
Gila Woodpecker	3/13/1981	1	heard	John Hubbard	Pleasanton	20	1				

Gila Woodpecker New Mexico location database

Gila Woodpecker	5/2/1981	3 only 3 counted in the Gila Valley; RF+	Ralph Fisher	Gila River ¹	20	1	
Gila Woodpecker	5/2/1981	3 [Gila River Spring Count RAF Compiler] no specific locations	Ralph Fisher	Gila River Valley	20	2	
Gila Woodpecker	6/1/1981	17 near Redrock 6/1 - 5	John Egbert	Redrock	20	2	
Gila Woodpecker	6/10/1981	2	John Egbert	Virden	20	2	
Gila Woodpecker	6/14/1981	13 6/14 and 6/16	John Egbert	Cliff	20	2	
Gila Woodpecker	6/16/1981	1 no specific numbers; nests near Cliff	John Egbert	Cliff	20	2	
Gila Woodpecker	6/24/1981	1 no specific numbers; nests near Redrock	Randy Hill	Redrock	20	2	4
Gila Woodpecker	1/2/1982	5 [CBC 82 36:4 Ralph Fisher]	Ralph Fisher	Riverside	20	2	36
Gila Woodpecker	1/16/1982	1	Ralph Fisher	Gila	21	1	
Gila Woodpecker	5/8/1982	7 GR Spring Count	Ralph Fisher	Gila River ¹	21	2	
Gila Woodpecker	5/8/1982	7 [Gila River Spring Count RAF Compiler] no specific locations	Ralph Fisher	Gila River Valley	21	2	
Gila Woodpecker	6/1/1982	4 no numbers; none in the Gila Valley after the 5/8 Spring Count (RF). 5/8 Ralph Fisher	Ralph Fisher	Gila River ¹	21	3	
Gila Woodpecker	5/7/1983	1 on nest at NM 211 bridge on Gila River on GR Spring Count; But total	John Durrie	Cliff-Gila V;	22	2	
Gila Woodpecker	5/7/1983	4 1 on nest at NM 211 bridge on Gila River on GR Spring Count; But total	Ralph Fisher	Cliff-Gila V;	22	2	
Gila Woodpecker	5/7/1983	3 [Gila River Spring Count RAF Compiler] no specific locations	Ralph Fisher	Gila River Valley	22	4	
Gila Woodpecker	10/30/1983	1 1 in Gila Riparian Habitat, where now scarce	Ralph Fisher	Gila River ¹	22	4	
Gila Woodpecker	12/31/1983	2 [CBC 84 38:4 Ralph Fisher]	Ralph Fisher	Riverside	22	4	38
Gila Woodpecker	1/7/1984	2 Pair on Duck Creek, Grant County, 1/7 (RF)	Ralph Fisher	Duck Creel	23	1	
Gila Woodpecker	2/15/1984	1 no numbers; no dates; a few along the Gila River in mid-February	Randy Hill	Gila River ¹	23	1	
Gila Woodpecker	5/4/1984	2 [Gila River Bird Census RAF compiler] No Redrock coverage or downstr	Ralph Fisher	Gila River Valley	23	2	
Gila Woodpecker	5/5/1984	2 on GR Spring Count; a low number	Ralph Fisher	Gila River ¹	23	2	38
Gila Woodpecker	12/1/1984	2 only 2 Gila Woodpeckers were counted in the Cliff area May 5 (RF et al.	Ralph Fisher	Cliff	24	1	
Gila Woodpecker	12/11/1984	1 north of Gila	Ralph Fisher	Gila	24	1	
Gila Woodpecker	12/29/1984	2	John Hubbard	Redrock	24	1	
Gila Woodpecker	5/4/1985	6 were a high total on GR CBC	Ralph Fisher	Riverside	24	1	
Gila Woodpecker	5/4/1985	8 a high 8 on the GR Spring Count	Ralph Fisher	Riverside	24	1	
Gila Woodpecker	5/4/1985	8 [Gila River Spring Count RAF Compiler] no specific locations	Ralph Fisher	Gila River ¹	24	2	
Gila Woodpecker	5/3/1986	5 [Gila River Bird Census RAF compiler] no specific location	Ralph Fisher	Gila River Valley	24	2	
Gila Woodpecker	1/3/1987	2 [CBC 87 41:4 Ralph Fisher]	Ralph Fisher	Gila River Valley	24	2	
Gila Woodpecker	2/5/1987	1 1 along San Francisco River 2/5 was north of range. Date out of range f.	Ralph Fisher	Riverside	24	2	41
Gila Woodpecker	3/5/1987	1 A vagrant Gila Woodpecker was at Pleasanton, March 5 (SW)	Sartor Williams	San Franci	26	2	
Gila Woodpecker	5/2/1987	3 [Gila River Spring Count RAF Compiler] no specific locations	Sartor Williams	Pleasanton	26	4	41
Gila Woodpecker	8/1/1987	1 no specific dates; none at Redrock where normally seen	Ralph Fisher	Redrock	26	4	
Gila Woodpecker	8/1/1987	3 [CBC 88 42:4 Ralph Fisher]	Ralph Fisher	Gila River ¹	26	4	
Gila Woodpecker	5/7/1988	6 6 on GR Spring Count was up slightly from previous years	Ralph Fisher	Riverside	27	2	42
Gila Woodpecker	5/7/1988	6 [Gila River Spring Count RAF Compiler] no specific locations given	Ralph Fisher	Gila River ¹	27	2	
Gila Woodpecker	5/5/1989	1 Breeding: Adult feeding young at a cavity at the same Bitter Creek 5/5, r	Sartor Williams	Gila River Valley	28	2	
Gila Woodpecker	5/6/1989	10 on GR Spring Count. 10 on Gila River Count was double the usual numt	Ralph Fisher	Bitter Cree	28	2	
Gila Woodpecker	5/6/1989	10 [Gila River Spring Count RAF Compiler] no specific locations	Ralph Fisher	Gila River ¹	28	2	
Gila Woodpecker	12/30/1989	2 [CBC 90 44:4 Ralph Fisher]	Ralph Fisher	Gila River Valley	28	2	
Gila Woodpecker	5/5/1990	2 pair in and out of nest cavity in willow at Redrock; GR Spring Count?	Ralph Fisher	Riverside	29	2	44
Gila Woodpecker	5/5/1990	6 [Gila River Spring Count RAF Compiler] no specific locations	Ralph Fisher	Redrock	29	2	
Gila Woodpecker	5/4/1991	3 [Gila River Spring Count RAF Compiler] no specific locations	Ralph Fisher	Gila River Valley	30	4	
Gila Woodpecker	8/1/1991	1 no dates or numbers; none seen in the Gila Valley area this fall	Ralph Fisher	Gila River ¹	30	4	
Gila Woodpecker	12/28/1991	1 [CBC 92 46:4 Ralph Fisher]	Ralph Fisher	Riverside	30	4	46
Gila Woodpecker	5/1/1992	2 [Gila River Spring Count RAF Compiler, no specific date]	Ralph Fisher	Gila River Valley	31	3	
Gila Woodpecker	6/24/1992	3 were in Nichol's Canyon in the lower Gila River Box	Sartor Williams	Gila River ¹	31	4	
Gila Woodpecker	11/25/1992	2 only 1 pair was in the Gila Valley	Ralph Fisher	Gila River ¹	31	4	
Gila Woodpecker	1/2/1993	3 on GR CBC	Ralph Fisher	Riverside	32	1	
Gila Woodpecker	1/2/1993	3 Gilas included 3 each near Cliff Jan 2 (RF)	Ralph Fisher	Gila River ¹	32	4	47
Gila Woodpecker	2/24/1993	3 [CBC 93 47:4 Ralph Fisher]	Ralph Fisher	Riverside	32	4	47
Gila Woodpecker	2/24/1993	1	Christopher Rustay	Cliff	32	1	
Gila Woodpecker	2/24/1993	1	Patricia Snider	Virden	32	1	

Gila Woodpecker New Mexico location database

Gila Woodpecker	2/24/1993	1	1	Christopher Rustay	Redrock	32	1	
Gila Woodpecker	2/24/1993	1	1	Patricia Snider	Redrock	32	1	
Gila Woodpecker	5/1/1993	4	[Gila River Spring Count RAF Compiler, no known date] no specific loca	Ralph Fisher	Gila River Valley			
Gila Woodpecker	12/30/1993	1	on GR CBC; RAF+	Ralph Fisher	Riverside	33	1	
Gila Woodpecker	12/30/1993	2	Only two Gila Woodpeckers were found on the Gila Valley CBC Dec 30	Ralph Fisher	Riverside			48
Gila Woodpecker	12/30/1993	4	numbers continue low along the Gila River with 4 at Redrock	Ralph Fisher	Riverside			48
Gila Woodpecker	3/12/1994	4	Gila Woodpeckers 4 were at Redrock March 12 (CR)	Christopher Rustay	Redrock	33	2	94
Gila Woodpecker	5/1/1994	3	[Gila River Spring Count RAF Compiler, no known date] no specific loca	Ralph Fisher	Gila River Valley			48
Gila Woodpecker	5/14/1994	3	Gila Woodpeckers...only 3 were tallied on the Gila Valley Count May 14	Ralph Fisher	Gila River Valley			48
Gila Woodpecker	6/1/1994	1	No specific locations; 3 tallied in Grant Co. lb 5/14 (RF+). May count?	Ralph Fisher	Grant Cour	33	2	
Gila Woodpecker	7/29/1994	1	was the only report	Ralph Fisher	Cliff/Gila			48
Gila Woodpecker	7/29/1994	1	no numbers; notably scarce	Sartor Williams	Cliff/Gila	33	3	
Gila Woodpecker	12/7/1994	1	RAF+; on GR CBC?	Ralph Fisher	Cliff/Gila	33	3	
Gila Woodpecker	12/30/1994	4	RAF+; on GR CBC?	John Hubbard	Virden	34	1	
Gila Woodpecker	12/30/1994	4	The only Gila Woodpeckers were 3-4 near Gila Dec. 30 (RF et al.)	Robert Dickerman	Virden	34	1	
Gila Woodpecker	12/30/1994	4	[CBC 95 49:4 Ralph Fisher]	Ralph Fisher	Gila	34	1	
Gila Woodpecker	2/4/1995	3	CMR+	Ralph Fisher	Gila			49
Gila Woodpecker	2/4/1995	1	No specific numbers; Only Gila Woodpeckers at Redrock Feb. 4 (CR)	Ralph Fisher	Gila			49
Gila Woodpecker	5/1/1995	6	[Gila River Spring Count RAF Compiler, no known date] no specific loca	Christopher Rustay	Redrock	34	1	49
Gila Woodpecker	12/2/1995	1	north of usual range	Christopher Rustay	Redrock			2
Gila Woodpecker	3/1/1996	1	no specific numbers or dates; increasing scarce along the Gila River	Ralph Fisher	Gila River Valley	35	1	
Gila Woodpecker	3/1/1996	1	no specific numbers or dates; increasing scarce along the Gila River	Dale Zimmerman	Buckhorn	35	2	
Gila Woodpecker	3/1/1996	1	no specific numbers or dates; increasing scarce along the Gila River	Marian Zimmerman	Gila River \	35	2	
Gila Woodpecker	5/1/1996	4	[Gila River Spring Count RAF Compiler, no known date] no specific loca	Ralph Fisher	Gila River \	35	2	
Gila Woodpecker	1/4/1997	1	no specific numbers or dates; scarce in the Gila Valley - attributed to RA	Ralph Fisher	Gila River Valley			51
Gila Woodpecker	1/4/1997	1	CBC 97 51:2 Ralph Fisher	Ralph Fisher	Gila River \	36	1	97
Gila Woodpecker	5/1/1997	8	[Gila River Spring Count RAF Compiler, no known date] no specific loca	Ralph Fisher	Riverside			2
Gila Woodpecker	5/11/1997	2	were north to Buckhorn	Ralph Fisher	Gila River Valley	36	2	
Gila Woodpecker	5/11/1997	2	Encouraging were 2 Gila Woodpeckers north to Buckhorn May 11 (RF)	Ralph Fisher	Buckhorn			51
Gila Woodpecker	6/1/1997	1	NE 1, no specific dates, reported in territories	Scott Stoleson	U Bar Ranch	37	1	
Gila Woodpecker	1/3/1998	2	only 2 were found on GR CBC; RSS+	Roland Shook	Riverside			52
Gila Woodpecker	1/3/1998	2	Only 2 Gila Woodpeckers were found on the Gila River Count Jan. 3 (R)	Roland Shook	Gila River Valley			98
Gila Woodpecker	1/3/1998	2	[CBC 98 Roland Shook]	Roland Shook	Riverside			
Gila Woodpecker	3/28/1998	5		Larry Malone	Iron Bridge			
Gila Woodpecker	5/1/1998	24	[Gila River Spring Count RSS Compiler] 5 Virden, 9 Redrock, 9 Cliff/Gila	Larry Malone	Redrock			
Gila Woodpecker	5/1/1998	24	[Gila River Spring Count RAF Compiler, no known date] no specific loca	Ralph Fisher	Gila River Valley			
Gila Woodpecker	5/2/1998	3		Larry Malone	Gila River Valley			
Gila Woodpecker	5/8/1998	1		Roland Shook	Iron Bridge			
Gila Woodpecker	5/20/1998	1		Roland Shook	Gila Bird Area			
Gila Woodpecker	5/21/1998	1		Roland Shook	Gila Bird Area			
Gila Woodpecker	6/1/1998	1	NW 1, no specific dates, reported in number of territories present	Roland Shook	Gila Bird Area			
Gila Woodpecker	6/1/1998	1	SE 1, no specific dates, reported in number of territories present	Scott Stoleson	U Bar Ranch			
Gila Woodpecker	6/29/1998	1	male; from 6/29 - 7/31	Scott Stoleson	U Bar Ranch			
Gila Woodpecker	6/30/1998	1		Ralph Fisher	Mangas St	37	3	
Gila Woodpecker	1/2/1999	6	on GR CBC?; RSS+	Joy Garcia and Matt Ricci	Gila Bird Area			
Gila Woodpecker	1/2/1999	6	Gila Woodpeckers were near Cliff Jan. 2 where now scarce (RS)	Roland Shook	Cliff	38	1	53
Gila Woodpecker	1/2/1999	6	[CBC 99 Roland Shook]	Roland Shook	Cliff			99
Gila Woodpecker	1/31/1999	2		Larry Malone	Riverside			
Gila Woodpecker	1/31/1999	1	The one that appeared at Mangas Springs last summer stayed until 1/31	Ralph Fisher	Iron Bridge			
Gila Woodpecker	3/15/1999	1		Roland Shook	Mangas St	38	1	
					Runyan's			

Gila Woodpecker New Mexico location database

Gila Woodpecker	3/18/1999	1		Roland Shook	Gila Bird Area			
Gila Woodpecker	3/29/1999	2		Roland Shook	Runyan's			
Gila Woodpecker	4/5/1999	1		Roland Shook	Runyan's			
Gila Woodpecker	4/12/1999	1		Roland Shook	Runyan's			
Gila Woodpecker	5/1/1999	18	[Gila River Spring Count RSS Compiler] 4 Virden & Lower Box, 9 Redrock	Roland Shook	Gila River Valley			
Gila Woodpecker	5/1/1999	3		Larry Malone	Iron Bridge			
Gila Woodpecker	5/10/1999	2		Roland Shook	Runyan's			
Gila Woodpecker	5/17/1999	2		Roland Shook	Runyan's			
Gila Woodpecker	6/1/1999	1	NW 1, no specific dates, reported in number of territories present	Roland Shook	U Bar Ranch			
Gila Woodpecker	6/1/1999	1	SE 1, no specific dates, reported in number of territories present	Scott Stoleson	U Bar Ranch			
Gila Woodpecker	5/1/2000	2	[Location also includes Lower Box]	Robert Willcox	Virden			
Gila Woodpecker	6/1/2000	1		Roland Shook	Gila Bird Area			
Gila Woodpecker	12/8/2000	1		Roland Shook	Gila Bird Area			
Gila Woodpecker	12/30/2000	13	[CBC 101 Roland Shook]	Roland Shook	Riverside			101
Gila Woodpecker	12/30/2000	1		Larry Malone	Iron Bridge			
Gila Woodpecker	4/21/2001	5	Five birds were noted at Redrock 21 Apr (JEP)	John Parmeter	Redrock	40	2	
Gila Woodpecker	5/5/2001	21	[Gila River Spring Count RSS Compiler] 6 Virden, 3 Redrock, 12 Cliff/Gi	Roland Shook	Gila River Valley			
Gila Woodpecker	5/6/2001	3		Larry Malone	Iron Bridge			
Gila Woodpecker	5/21/2001	1	no numbers; 2 territories; May 21-22	Sartor Williams	Lower Gila	40	2	
Gila Woodpecker	5/31/2001	1	no numbers; 12-15 territories in the Cliff/Gila Valley; up from the usual 2	Scott Stoleson	Cliff-Gila V.	40	2	
Gila Woodpecker	5/31/2001	1	No specific numbers; encouraging was news of 12-15 Gila Woodpecker	Scott Stoleson	Cliff/Gila			55
Gila Woodpecker	12/29/2001	4	[CBC 102 from web Roland Shook]	Roland Shook	Riverside			102
Gila Woodpecker	12/29/2001	1		Larry Malone	Iron Bridge			
Gila Woodpecker	5/4/2002	13	[Gila River Spring Count RSS Compiler] 3 Virden, 7 Cliff/Gila Valley, 3	Roland Shook	Gila River Valley			103
Gila Woodpecker	12/28/2002	4	[CBC 103 from web Roland Shook]	Roland Shook	Riverside			
Gila Woodpecker	12/28/2002	1		Larry Malone	Iron Bridge			
Gila Woodpecker	1/19/2003	1		Larry Malone	Gila Bird Area			
Gila Woodpecker	3/15/2003	1		Larry Malone	Virden			
Gila Woodpecker	5/3/2003	1		Larry Malone	Iron Bridge			
Gila Woodpecker	1/3/2004	5	[CBC 104 from web Roland Shook]	Roland Shook	Riverside			104
Gila Woodpecker	3/13/2004	2		Larry Malone	Redrock			
Gila Woodpecker	5/31/2004	2	NW 1	Kathy Brodhead	U Bar Ranch			
Gila Woodpecker	5/31/2004	1	NW 2	Kathy Brodhead	U Bar Ranch			
Gila Woodpecker	6/6/2004	1	SE 2	Kathy Brodhead	U Bar Ranch			
Gila Woodpecker	6/13/2004	1	NE 1	Kathy Brodhead	U Bar Ranch			
Gila Woodpecker	6/19/2004	1	SE 0	Kathy Brodhead	U Bar Ranch			
Gila Woodpecker	7/3/2004	1	SE 2	Kathy Brodhead	U Bar Ranch			
Gila Woodpecker	1/1/2005	5	[CBC 105 from web Roland Shook]	Roland Shook	Riverside			105
Gila Woodpecker	1/1/2005	1		Larry Malone	Iron Bridge			
Gila Woodpecker	5/7/2005	25	[Gila River Spring Count RSS Compiler] 12 Virden, 13 Cliff/Gila Valley	Roland Shook	Gila River Valley			
Gila Woodpecker	5/7/2005	1	lower end of canyon	Larry Malone	Sycamore Canyon			
Gila Woodpecker	5/19/2005	1		Roland Shook	Gila Bird Area			
Gila Woodpecker	5/22/2005	1		Larry Malone	Redrock			
Gila Woodpecker	5/28/2005	1	NW 1	Kathy Brodhead	U Bar Ranch			
Gila Woodpecker	5/28/2005	1	NW 2	Kathy Brodhead	U Bar Ranch			
Gila Woodpecker	5/29/2005	1	SE 0	Kathy Brodhead	U Bar Ranch			
Gila Woodpecker	6/5/2005	1	SW 1	Kathy Brodhead	U Bar Ranch			
Gila Woodpecker	6/11/2005	1	SE 2	Kathy Brodhead	U Bar Ranch			
Gila Woodpecker	6/12/2005	1	NE 2	Kathy Brodhead	U Bar Ranch			
Gila Woodpecker	6/12/2005	1	NW 1	Kathy Brodhead	U Bar Ranch			
Gila Woodpecker	6/26/2005	1	SW 2	Kathy Brodhead	U Bar Ranch			
Gila Woodpecker	7/10/2005	1	NW 1	Kathy Brodhead	U Bar Ranch			
Gila Woodpecker	10/15/2005	1		Larry Malone	Lily Center			
Gila Woodpecker	12/31/2005	9	[CBC 106 from web Roland Shook]	Roland Shook	Riverside			106

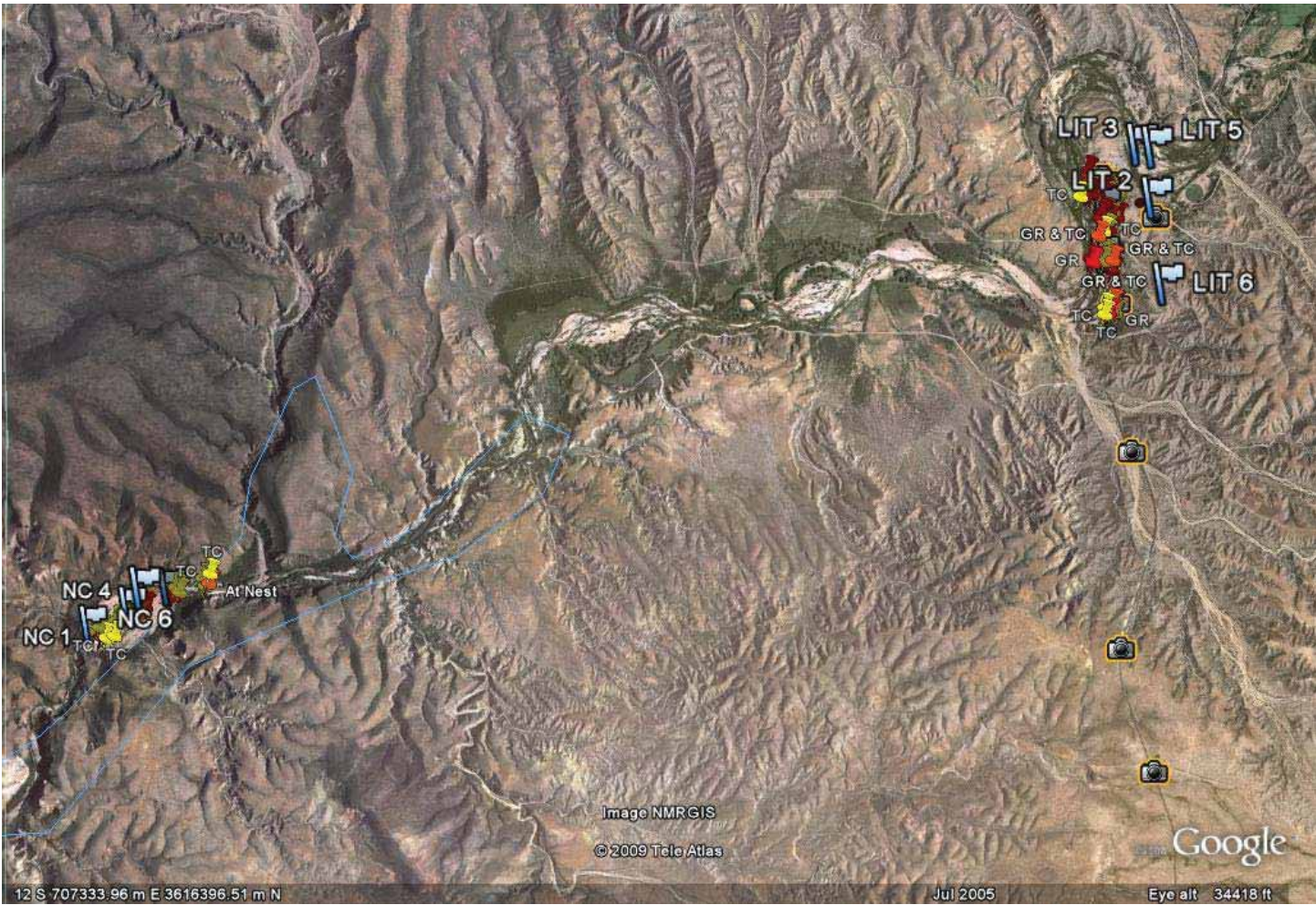
Gila Woodpecker New Mexico location database

Gila Woodpecker	12/31/2005	1		Larry Malone	Iron Bridge		
Gila Woodpecker	1/21/2006	2		Larry Malone	Licity Center		
Gila Woodpecker	4/15/2006	2		Roland Shook	Gila Bird Area		
Gila Woodpecker	4/15/2006	2		Rebecca Maxwell	Gila Bird Area		
Gila Woodpecker	4/15/2006	2	A pair of Gila Woodpeckers was in the GBA 15 Apr - 29 May (RS) where	Roland Shook	Gila Bird Area		3
Gila Woodpecker	4/29/2006	2		Rebecca Maxwell	Gila Bird Area		
Gila Woodpecker	4/29/2006	2	A pair was at GBA 15 April through 29 May (RSS) where scarce	Roland Shook	Gila Bird A	45	2
Gila Woodpecker	5/8/2006	3		Rebecca Maxwell	Gila Bird Area		
Gila Woodpecker	5/10/2006	1		Roland Shook	Gila Bird Area		
Gila Woodpecker	5/10/2006	1		Rebecca Maxwell	Gila Bird Area		
Gila Woodpecker	5/13/2006	3	Bio-Inventory of Gila River Project	Roland Shook	Lower Nichol's Canyon		
Gila Woodpecker	5/13/2006	2	Bio-Inventory of Gila River Project	Roland Shook	Redrock		
Gila Woodpecker	5/13/2006	1	Bio-Inventory of Gila River Project	Roland Shook	Fisherment's Point		
Gila Woodpecker	5/23/2006	2	Bio-Inventory of Gila River Project	Roland Shook	Redrock		
Gila Woodpecker	5/23/2006	3	Bio-Inventory of Gila River Project	Roland Shook	Redrock		
Gila Woodpecker	5/24/2006	1		Roland Shook	Gila Bird Area		
Gila Woodpecker	5/26/2006	2	Bio-Inventory of Gila River Project	Roland Shook	Gila Bird Area		
Gila Woodpecker	5/27/2006	1	SW 1	Roland Shook	Licity Center		
Gila Woodpecker	5/27/2006	1	SW 4	Kathy Brodhead	U Bar Ranch		
Gila Woodpecker	5/29/2006	2		Kathy Brodhead	U Bar Ranch		
Gila Woodpecker	5/30/2006	1	NE 3	Roland Shook	Gila Bird Area		
Gila Woodpecker	5/30/2006	1	NW 1	Kathy Brodhead	U Bar Ranch		
Gila Woodpecker	6/5/2006	1	Bio-Inventory of the Gila River Project	Kathy Brodhead	U Bar Ranch		
Gila Woodpecker	6/6/2006	2	Bio-Inventory of the Gila River Project	William (Bill) Norris	Fisherment's Point		
Gila Woodpecker	6/6/2006	1	Bio-Inventory of the Gila River Project	William (Bill) Norris	Redrock		
Gila Woodpecker	6/7/2006	2	Bio-Inventory of the Gila River Project	William (Bill) Norris	Redrock		
Gila Woodpecker	6/7/2006	2	A nest at GBA 7 June (RSS), the first there in a decade	Roland Shook	Gila Bird Area	45	3
Gila Woodpecker	6/7/2006	1	A nest at the Gila Bird Area 7 Jun (RS)	Larry Malone	Gila Bird A		4
Gila Woodpecker	6/7/2006	1	A nest at the Gila Bird Area 7 Jun (RS)	Roland Shook	Gila Bird Area		4
Gila Woodpecker	6/10/2006	1	Bio-Inventory of the Gila River Project	William (Bill) Norris	Gila Bird Area		
Gila Woodpecker	6/11/2006	1	NW 1	Kathy Brodhead	U Bar Ranch		
Gila Woodpecker	6/13/2006	2		Roland Shook	Gila Bird Area		
Gila Woodpecker	6/15/2006	1	Bio-Inventory of the Gila River Project	William (Bill) Norris	Licity Center		
Gila Woodpecker	6/15/2006	1	Bio-Inventory of the Gila River Project	William (Bill) Norris	Agnew		
Gila Woodpecker	6/21/2006	1		Roxanna Wright	Gila Bird Area		
Gila Woodpecker	6/21/2006	1	Encouraging for the Cliff-Gila Valley were 1-2 near Cliff 23 June (LKM)	Roland Shook	Gila Bird Area	45	3
Gila Woodpecker	6/23/2006	2	Encouraging for the Cliff-Gila Valley were 1-2 Gila Woodpeckers near C	Larry Malone	Gila Bird Area		
Gila Woodpecker	6/23/2006	2		Larry Malone	Cliff		
Gila Woodpecker	6/29/2006	2		Larry Malone	Cliff		
Gila Woodpecker	7/3/2006	1	Bio-Inventory of Gila River Project	Roland Shook	Licity Center		
Gila Woodpecker	7/3/2006	1	Bio-Inventory of Gila River Project	Roland Shook	Gila Bird Area		
Gila Woodpecker	7/6/2006	1		Roland Shook	Lower Nichol's Canyon		
Gila Woodpecker	7/6/2006	1		Roland Shook	Fisherment's Point		
Gila Woodpecker	7/7/2006	2	NE 2	Roland Shook	Gila Bird Area		
Gila Woodpecker	7/10/2006	2	Bio-Inventory of Gila River Project	Roxanna Wright	Gila Bird Area		
Gila Woodpecker	7/10/2006	3	Bio-Inventory of Gila River Project	Kathy Brodhead	U Bar Ranch		
Gila Woodpecker	7/10/2006	1	SE 2	Roland Shook	Redrock		
Gila Woodpecker	7/12/2006	1		Roland Shook	Redrock		
Gila Woodpecker	7/12/2006	1		Roland Shook	U Bar Ranch		
Gila Woodpecker	12/30/2006	1		Roland Shook	Gila Bird Area		
Gila Woodpecker	12/30/2006	9	[CBC 107 from web Roland Shook]	Roxanna Wright	Gila Bird Area		
Gila Woodpecker	12/30/2006	3		Roland Shook	Riverside		
Gila Woodpecker	12/30/2006			Larry Malone	Iron Bridge		

Gila Woodpecker	3/20/2007	1 vocalizing in Little's Yard	Roland Shook	Redrock
Gila Woodpecker	4/14/2007	2 vocalizing	Roland Shook	Runyan's
Gila Woodpecker	5/12/2007	1 Bio-Inventroy of the Gila River Project	Roland Shook	Lower Nichol's Canyon
Gila Woodpecker	5/19/2007	1	Roland Shook	Gila Bird Area
Gila Woodpecker	5/23/2007	1 Bio-Inventroy of the Gila River Project	Roland Shook	Upper Runyan's Property
Gila Woodpecker	5/30/2007	1 WiFi census	Roland Shook	Gila Bird Area - Upper
Gila Woodpecker	6/1/2007	3 Bio-Inventroy of the Gila River Project	Roland Shook	Gila Bird Area
Gila Woodpecker	6/1/2007	1 [0600, WiFi Survey, Upper Area]	Roland Shook	Redrock
Gila Woodpecker	6/4/2007	1 Bio-Inventroy of the Gila River Project	Roland Shook	Redrock
Gila Woodpecker	6/11/2007	1	Roland Shook	Gila Bird Area
Gila Woodpecker	6/13/2007	1	Roland Shook	Gila Bird Area
Gila Woodpecker	6/18/2007	1 Bio-Inventroy of the Gila River Project	Larry Malone	Highway 211 Bridge
Gila Woodpecker	6/18/2007	2 Bio-Inventroy of the Gila River Project	Roland Shook	Lower Nichol's Canyon
Gila Woodpecker	6/18/2007	1 Bio-Inventroy of the Gila River Project	Roland Shook	Redrock
Gila Woodpecker	6/20/2007	1 Bio-Inventroy of the Gila River Project	Roland Shook	Redrock
Gila Woodpecker	6/26/2007	1 Bio-Inventroy of the Gila River Project	Roland Shook	Mogollon Creek
Gila Woodpecker	7/13/2007	1 Bio-Inventroy of the Gila River Project	Roland Shook	Licy Center
Gila Woodpecker	7/13/2007	1 Bio-Inventroy of the Gila River Project	Roland Shook	Lower Nichol's Canyon
Gila Woodpecker	7/13/2007	2 Bio-Inventroy of the Gila River Project	Roland Shook	Redrock
Gila Woodpecker	7/24/2007	2 Near the Highway 211 bridge of private property	Roland Shook	Redrock
Gila Woodpecker	12/29/2007	11 [108 CBC RSS Compiler]	Roland Shook	Cliff/Gila
Gila Woodpecker	12/29/2007	2	Roland Shook	Riverside
Gila Woodpecker	3/15/2008	1 [Bird Sighting Report, March 15, 2008] Audubon field trip. Iron Bridge	Larry Malone	Iron Bridge
Gila Woodpecker	3/15/2008	1 [Bird Sighting Report, March 15, 2008] Audubon field trip. Iron Bridge	David Beauty	Iron Bridge
Gila Woodpecker	3/28/2008	1	Roland Shook	Iron Bridge
Gila Woodpecker	4/4/2008	2	Roland Shook	Redrock
Gila Woodpecker	4/5/2008	5 [Iron Bridge Report 05April2008]	Larry Malone	Iron Bridge
Gila Woodpecker	4/19/2008	2	David Beauty	Iron Bridge
Gila Woodpecker	4/21/2008	1 [with Denise Friedrich] SE 1	Roland Shook	Iron Bridge
Gila Woodpecker	4/23/2008	4 [with Denise Friedrich] at jct of Highway 211 & 2937; one in SW 1, 2 in S	Roland Shook	U Bar Ranch
Gila Woodpecker	4/25/2008	1	Roland Shook	U Bar Ranch
Gila Woodpecker	4/28/2008	2 [with Denise Friedrich] near large sycamore upstream	Roland Shook	Gila Bird Area
Gila Woodpecker	4/28/2008	4 [with Denise Friedrich]	Roland Shook	Fisherman's Point
Gila Woodpecker	4/30/2008	2 [with Denise Friedrich]	Roland Shook	Redrock
Gila Woodpecker	5/3/2008	5	Roland Shook	Lower Nichol's Canyon
Gila Woodpecker	5/3/2008	2 [Gila River Count] NE 1	Larry Malone	Iron Bridge
Gila Woodpecker	5/7/2008	5 [with Denise Friedrich] 2 pairs SW 1	Roland Shook	Iron Bridge
Gila Woodpecker	5/8/2008	5 [with Denise Friedrich]	Roland Shook	U Bar Ranch
Gila Woodpecker	5/8/2008	4 [with Denise Friedrich] 2 in Little's front yard, 1 below bridge	Roland Shook	U Bar Ranch
Gila Woodpecker	5/10/2008	1 [with Denise Friedrich]	Roland Shook	Virden
Gila Woodpecker	5/10/2008	5 [with Denise Friedrich - Sp Migration Count]	Roland Shook	Redrock
Gila Woodpecker	5/10/2008	8 [Iron Bridge Report, 10May2008] numbers correct?	Roland Shook	Lower Nichol's Canyon
Gila Woodpecker	5/10/2008	8 [Iron Bridge Report, 10May2009] numbers correct?	David Beauty	Little's Property
Gila Woodpecker	5/12/2008	4 SW 1 pair engaged in nest building, 2nd pair in vicinity	Elroy Limmer	Iron Bridge
Gila Woodpecker	5/14/2008	1 [with Denise Friedrich] nr? SE 1	Roland Shook	U Bar Ranch
Gila Woodpecker	5/14/2008	6 [with Denise Friedrich] west side of NW 17, also NW 2, 1 north of 211	Roland Shook	U Bar Ranch
Gila Woodpecker	5/14/2008	6 [Iron Bridge Report, 14May2008] numbers correct?	David Beauty	Iron Bridge
Gila Woodpecker	5/15/2008	1 heard north of Runyan's	Denise Friedrich	Runyan's
Gila Woodpecker	5/19/2008	2 [with Denise Friedrich] on east side of river above 211 bridge	Roland Shook	U Bar Ranch
Gila Woodpecker	5/19/2008	2 calling on east side of river above 211 bridge, exact location unknown	Roland Shook	U Bar Ranch
Gila Woodpecker	5/20/2008	1 [with Denise Friedrich] East of river in NE 5 (Garcia)	Roland Shook	U Bar Ranch
Gila Woodpecker	5/20/2008	1 [with Denise Friedrich] NE5, calling east? of river	Roland Shook	U Bar Ranch
Gila Woodpecker	5/21/2008	2 SW 1, two vocalizing, one at nest	Denise Friedrich	U Bar Ranch

Gila Woodpecker New Mexico location database

Gila Woodpecker	5/22/2008	2 [with Denise Friedrich] SW 1, a pair at north end, nest of another pair? f. Roland Shook	U Bar Ranch
Gila Woodpecker	5/23/2008	1 [Iron Bridge Report, 23May2008] at least one David Beatty	Iron Bridge
Gila Woodpecker	5/26/2008	3 [with Denise Friedrich] calling west of Beaver Pond Stringer, one at SW Roland Shook	U Bar Ranch
Gila Woodpecker	5/27/2008	3 [with Denise Friedrich] calling west of NW 3 by highway?, 1 in lower NW Roland Shook	U Bar Ranch
Gila Woodpecker	5/28/2008	1 [with Denise Friedrich] SE 0, heard several times, chir call	U Bar Ranch
Gila Woodpecker	5/30/2008	1 NW Stringer toward northeast end	U Bar Ranch
Gila Woodpecker	5/30/2008	1	Gila Bird Area
Gila Woodpecker	6/22/2008	2 [Iron Bridge Report, 22June2008]	Iron Bridge
Gila Woodpecker	12/14/2008	2 [Bird Sighting Report, Jan. 1, 2009] at junction of Highway 180 and Bill E Denise Friedrich	Gila River Valley
Gila Woodpecker	12/14/2008	2 [Bird Sighting Report, Jan. 1, 2009] at junction of Highway 180 and Bill E William (Bill) Norris	Gila River Valley
Gila Woodpecker	12/27/2008	2 [109 CBC RSS Compiler Route 1]	Riverside
Gila Woodpecker	12/27/2008	4 [109 CBC RSS Compiler Route 2]	Riverside
Gila Woodpecker	12/27/2008	1 [109 CBC RSS Compiler Route 7]	Riverside
Gila Woodpecker	12/27/2008	7 [Gila River CBC (109th), R Shook Compiler] Bill Norris 2 (Bill Evans Lak Roland Shook	Riverside
Gila Woodpecker	1/28/2009	5	Riverside
Gila Woodpecker	1/29/2009	4	Little's Property
Gila Woodpecker	2/19/2009	8 includes 2 at house	Little's Property
Gila Woodpecker	2/19/2009	3	Little's Property
Gila Woodpecker	2/24/2009	2	Little's Property
Gila Woodpecker	2/24/2009	2	Nichol's Canyon
Gila Woodpecker	3/6/2009	6	Nichol's Canyon
Gila Woodpecker	3/8/2009	4 [Bird Sighting Report, Mar. 15, 2009] also in Iron Bridge Report 08	Iron Bridge
Gila Woodpecker	3/10/2009	1	Nichol's Canyon
Gila Woodpecker	3/12/2009	7	Little's Property
Gila Woodpecker	3/19/2009	9	Little's Property
Gila Woodpecker	3/26/2009	8	Little's Property
Gila Woodpecker	3/31/2009	1	Little's Property
Gila Woodpecker	4/9/2009	11	Nichol's Canyon
Gila Woodpecker	4/16/2009	9	Little's Property
Gila Woodpecker	4/21/2009	1	Little's Property
Gila Woodpecker	4/28/2009	1	Nichol's Canyon
Gila Woodpecker	5/7/2009	8	Little's Property
Gila Woodpecker	5/18/2009	1 [with Angela Slaught] NE3, GPS NE3GW1	U Bar Ranch
Gila Woodpecker	5/19/2009	4 [with Angela Slaught] 2 at SE 2, GPS SE2GW1, SE2GW2 and 2 GIWO	Runyan's
Gila Woodpecker	5/20/2009	3 [with Angela Slaught] west side of TNC Iron Bridge, GPS IBGW1, IBGW2	Iron Bridge
Gila Woodpecker	5/26/2009	4 [with Angela Slaught] NE5 (Garcian and upstream) GPS NE51GW, NE5	U Bar Ranch
Gila Woodpecker	6/1/2009	1 [with Allena Thompson] male calling	Gila Bird Area
Gila Woodpecker	6/8/2009	1 [with Angela Slaught] NE3, GPS NE3GW2	U Bar Ranch
Gila Woodpecker	6/9/2009	1 [with Danielle Walkup] SW1, GPS GIWO1	U Bar Ranch
Gila Woodpecker	6/10/2009	1 [with Angela Slaught] NE5, GPS NE5GW1, 20 m north of fence	U Bar Ranch
Gila Woodpecker	6/11/2009	2 [with Angela D Slaught] in SE2, GPS SE2GW2, second GIWO in SW4	U Bar Ranch
Gila Woodpecker	6/11/2009	1 [with Danielle Walkup] SE0, GPS SE0W0	U Bar Ranch
Gila Woodpecker	6/12/2009	3 [with Angela D Slaught], GPS IBWGW2, IBWGW3, IBWGW4	Iron Bridge



12 S 707333.96 m E 3616396.51 m N

Jul 2005

Eye alt 34418 ft

Image NMRGIS
© 2009 Tele Atlas

Google