



# **Wildlife Management Division**

## **Turkey 19.31.16 NMAC**

**March 1, 2018**

**New Mexico State Game Commission Meeting  
Las Cruces, NM**

# Statewide Harvest Data

<b>Year</b>	<b>Season</b>	<b>Licenses Sold</b>	<b>No. Hunters Reported</b>	<b>Success Rate</b>	<b>Estimated Harvest</b>	<b>Satisfaction</b>
2011	Spring	9,656	1,091	28%	2926	3.5
2011	Fall	2,431	287	24.7%	502	3.5
2012	Spring	8,524	1,799	n/a	n/a	4
2012	Fall	2,828	956	n/a	n/a	4
2013	Spring	9,284	6,782	20.5%	1894	3.15
2013	Fall	2,989	2,221	15.5%	335	3.08
2014	Spring	8,916	7,297	26.3%	2395	3.35
2014	Fall	3,336	2,742	26.3%	675	3.3
2015	Spring	9,462	7,823	25.8%	2607	3.41
2015	Fall	3,790	3,101	23.9%	680	3.48
2016	Spring	10,159	7,827	24.9%	3036	3.5
2016	Fall	3,842	3,062	19.3%	536	3.18

Harvest reporting was voluntary in 2011 and 2012

# Turkey biology

- **Spring breeding season**
  - **Peak of onset incubation May 10-25**
  - **Male gobbling peaks prior to nest initiation and again after onset of incubation**
- **Harvest is additive to natural mortality**
  - **>30% of male harvest could lead to population decline**

# Spring Chronology- Gobbling, Hunting, and Incubation

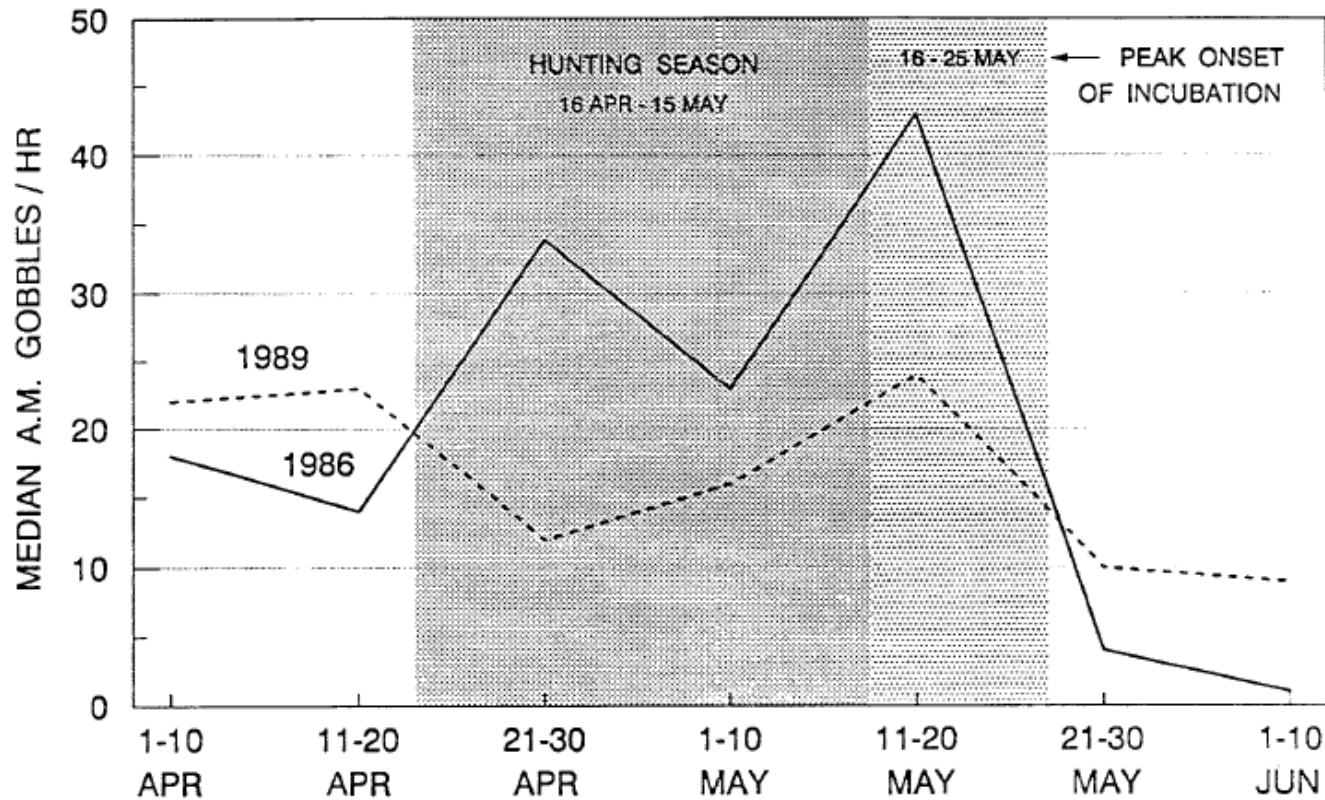
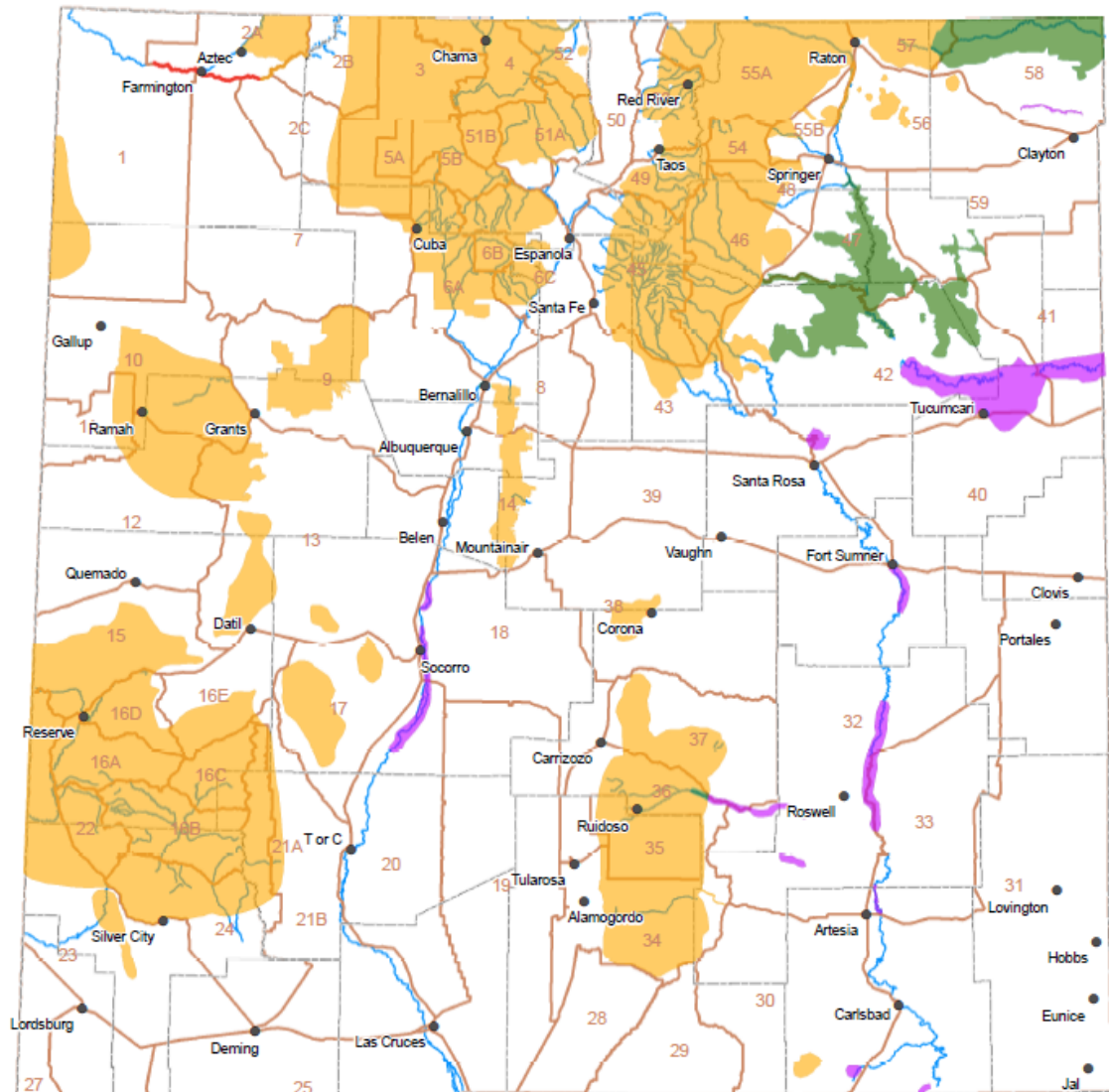


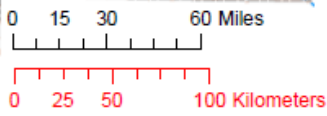
Fig. 1. Chronologic distribution of gobbling activity of adult male Merriam's wild turkeys in Colorado and New Mexico.

Hoffman 1990



**Turkey Distribution Subspecies**

- Gould's
- Merriam's
- Rio Grande
- Rio Grande X Domestic Hybrid
- Overlapping Distribution of Rio Grande and Merriam's -- Potential Hybridization



August 2015





**Proposed  
Amendments:  
Turkey  
19.31.16 NMAC**

- **Adjust seasons for calendar dates**
- **Modify units open for fall hunting**
- **Opening additional areas for spring turkey**



***Questions?***