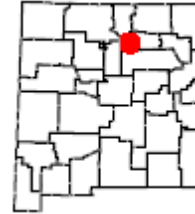




Morphy Lake, Mora, OG.151



<http://www.emnrd.state.nm.us/SPD/morphylakestatepark.html>

Information: Morphy Lake is situated in the scenic Sangre de Cristo Mountains at the edge of the Pecos Wilderness. Morphy Lake is leased using Open Gate Funds from Acequia de La Isla and La San Jose Community Ditch Associations. The lake provides excellent fishing opportunities and is regularly stocked with rainbow trout. New Mexico State Parks is compensated with Open Gate Funds to oversee and regulate activity at Morphy Lake. Cooperation with New Mexico State Parks provides infrastructure to improve the experience of visitors to Morphy Lake and allows additional recreational opportunities such as canoeing and camping.

Permitted Activities: Only Fishing is permitted on this property during the seasons and dates specified in the Open Gate lease agreement between the Department of Game and Fish and the landowner. Access to the property is subject to the terms and conditions in the Open Gate lease agreement and is restricted to the following permitted activities:

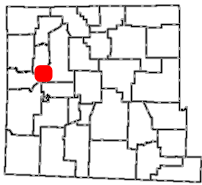
Permitted Activity	Available Dates	Remarks
Fishing	April 1- Oct. 31 (check Morphy Lake website for special closures)	Anglers 11 years of age and younger are not required to hold a fishing license. You may fish without a license on free fishing days. See property rules for special use restrictions. Boats restricted to oars or electric motors.

Open Gate is a program that leases private lands to improve public access for hunting, fishing, and trapping. Open Gate leases are funded exclusively by hunters, anglers, and trappers through the purchase of the Habitat Management and Access Validation (HMAV).

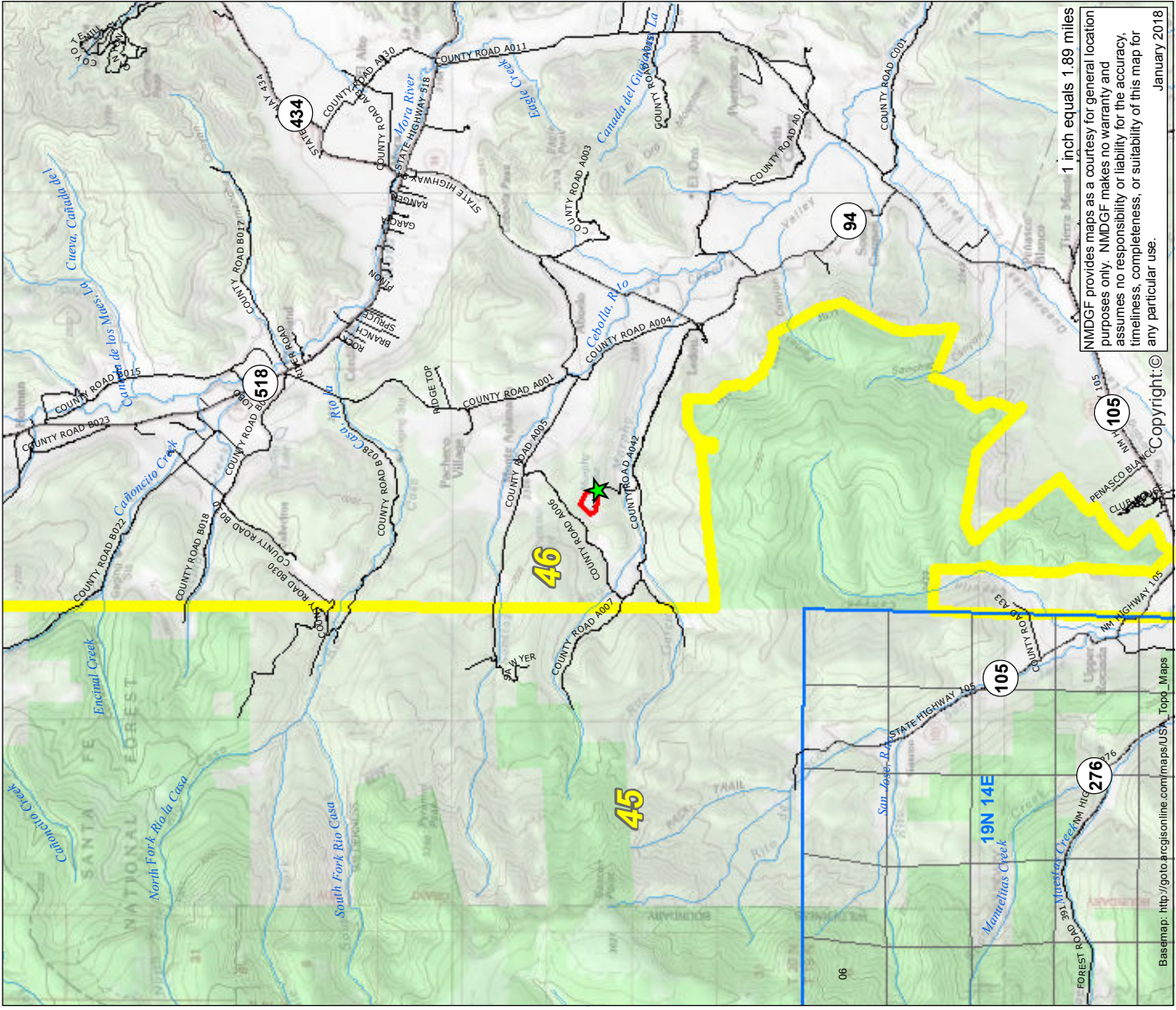
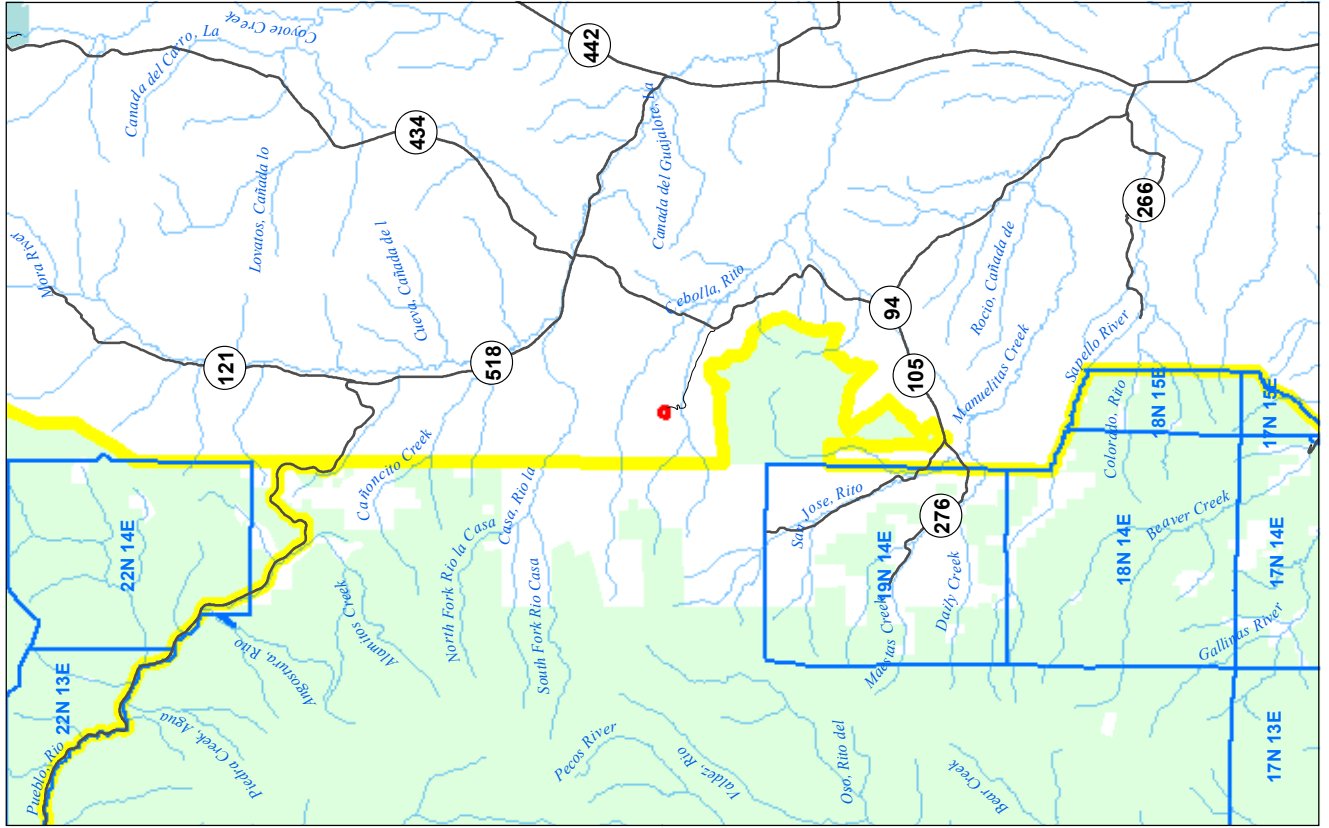
Morphy Lake

Property Rules: Property rules, access fees, and permitted activities other than fishing at Morphy Lake are governed by New Mexico State Parks. For information on rules, fees, and additional permitted activities, please visit the [Morphy Lake State Park webpage](http://www.emnrd.state.nm.us/SPD/morphylakestatepark.html) at www.emnrd.state.nm.us/SPD/morphylakestatepark.html

Rate this Property - NMDGF wants your feedback to ensure that this property is providing an enjoyable outdoor experience. Please take a moment to anonymously rate this property. We know your experience can differ each time you go afield, so be sure to provide a separate review each time you visit this Open Gate property. *After each visit you can quickly provide a review by clicking the **Rate a Property** tab on the [Open Gate homepage](#)*



**2018-19 OPEN GATE
Hunting and Fishing
Access Program
Property OG.151**



1 inch equals 1.89 miles
 NMDGF provides maps as a courtesy for general location purposes only. NMDGF makes no warranty and assumes no responsibility or liability for the accuracy, timeliness, completeness, or suitability of this map for any particular use.
 Copyright: © January 2018

>>> Be Ethical, Courteous, and Safe <<<
All New Mexico Department of Game and Fish regulations and seasons apply.

Roads

- Property Rules Sign
- PLSSTownship
- Open Gate Property
- GMU Boundaries
- Secondary Road
- State Highway
- Interstate Highway
- US Highway

Surface Ownership

- BLM
- USFS
- Tribal
- Private
- State

Base map: http://globe.hrcjsonline.com/maps/USA_Top_Maps