



NEW MEXICO DEPARTMENT OF GAME AND FISH

2015-16 NEW MEXICO  
**HUNTING**



**MIGRATORY GAME BIRD  
SUPPLEMENT**

[wildlife.state.nm.us](http://wildlife.state.nm.us)

*Conserving New Mexico's Wildlife for Future Generations*

# General Information

## Our Mission

To conserve, regulate, propagate and protect the wildlife and fish within the State of New Mexico, using a flexible management system that ensures sustainable use for public food supply, recreation and safety, and to provide for off-highway motor vehicle recreation that recognizes cultural, historic and resource values while ensuring public safety.

## New Mexico State Game Commissioners

Paul M. Kienzle III, Chairman, P.O. Box 587, Albuquerque, NM 87103-0587  
William "Bill" Montoya, Vice Chairman—125 Little Creek Hills Road, Alto, NM 88312  
Robert Espinoza, Sr.—P.O. Box 6792, Farmington, NM 87499  
Ralph Ramos—921 Jana Court, Las Cruces, NM 88005  
Robert Ricklefs—167 West Cito Road, Cimarron, NM 87714  
Elizabeth Atkinson Ryan—P.O. Box 1612, Roswell, NM 88202  
Thomas "Dick" Salopek—975 Holcomb Road, Las Cruces, NM 88007

## New Mexico Department of Game and Fish

One Wildlife Way, Santa Fe, NM 87507 . . . . . 1-888-248-6866

Alexandra Sandoval, Director  
Donald Jaramillo, Deputy Director  
RJ Kirkpatrick, Assistant Director  
Chris Chadwick, Assistant Director

## Regional Offices

Northwest Office: 3841 Midway Place NE, Albuquerque, NM 87109 . . . . . (505) 222-4700  
Southwest Office: 2715 Northrise Drive, Las Cruces, NM 88011 . . . . . (575) 532-2100  
Northeast Office: 215 York Canyon Road, Raton, NM 87740 . . . . . (575) 445-2311  
Southeast Office: 1912 W. Second Street, Roswell, NM 88201 . . . . . (575) 624-6135

## Important Telephone Numbers

General Information and License Sales . . . . . 1-888-248-6866  
Operation Game Thief . . . . . 1-800-432-4263  
24-hour Depredation Hotline . . . . . 1-888-727-4883  
TDD (number for hearing impaired) . . . . . (505) 476-8143

# Only Migratory Game Bird Seasons

The "2015–16 New Mexico Migratory Game Bird Hunting Supplement" is only for migratory game bird seasons which include American coot, band-tailed pigeon, common moorhen, common snipe, dark geese, dove, ducks, light geese, sandhill crane, sora and Virginia rail. Hunted waterfowl in New Mexico includes ducks and geese (birds in the family *Anatidae*) and coots. Hunting swans in New Mexico is not allowed.

Upland game seasons are not in this supplement. Upland game seasons for Eurasian collared dove, grouse, quail, pheasant and squirrel are contained in the "2015–16 New Mexico Hunting Rules and Information." Refer to it for upland game seasons, hunting regulations, license requirements and fees.



Available online and in print, the "2015–16 New Mexico Hunting Rules and Information" also provides essential information about game-hunting licenses and fees, descriptions of public- and private-land uses, definition of criminal trespass, and information about hunter education. Off-highway vehicle use, the Mentored Youth-Hunter Program and Operation Game Thief also are contained.

# License Requirements

## Game Hunting License, Validations, Stamps and HIP Number

All migratory game bird hunters must possess a Game Hunting License or Game Hunting & Fishing License, Habitat Management & Access Validation (except as defined below), Habitat Stamp if applicable, and Harvest Information Program (HIP) number. For license fees and information, as well as general regulations, refer to the "2015–16 New Mexico Hunting Rules and Information" booklet (available online and in print).

**Habitat Management & Access Validation** Once each license year (Apr. 1–Mar. 31) all hunters and/or anglers must purchase a Habitat Management & Access Validation. Validations are not required for hunters and anglers under 18 years of age and not required for resident anglers 70 years and older or 100%-disabled resident veterans in conjunction with their free license.

**Habitat Stamp** For Forest Service and BLM lands in New Mexico, all hunters, trappers and anglers must purchase a Habitat Improvement Stamp. Purchased separately and valid for one license year, this stamp **is not required** for trappers and anglers under 12 years of age, resident anglers 70 years and older or 10-percent disabled resident veterans in conjunction with their free license. Funds from the Habitat Stamp are used to protect and increase wildlife and fishery habitat throughout the state. Since its inception in 1986, this program has invested more than \$41 million to protect, improve and create new habitat in New Mexico.

**Duck Stamp** All hunters of waterfowl who are 16 years of age or older must possess a federal Migratory Bird Hunting & Conservation Stamp (Duck Stamp), available online: [www.duckstamp.com](http://www.duckstamp.com) and at U.S. Post Offices, NMDGF offices and some license vendors (check for availability).

**Hunter Education or Mentored Youth Number Required** Before purchasing any type of firearm hunting license, individuals under 18 years of age must either: 1, possess a Hunter Education number from New Mexico or another state; or 2, possess a New Mexico Mentored-Youth Hunter Program number. Certification and/or registration numbers must be carried at all times while hunting.

**Youth Hunts** To qualify for youth hunts, applicants must be under 18 years of age on opening day of the hunt and must possess a Hunter Education Course Certificate number or a Mentored Youth-Hunter Program registration number.

**Exception** to the above age requirement applies for federal "Youth Waterfowl Days." Hunters under 16 years of age may participate without a Duck Stamp, but must be fully licensed and possess a Hunter Education Certificate number or a Mentored Youth-Hunter Program registration number. Hunters are not required to have a federal Duck Stamp, special permit or application. For more information about this hunt, see pages 3, 8 and 15.

## Application Deadline: Sept. 30, 2015

Deadline for all special-permit sandhill crane hunts is September 30 before 5 p.m. MDT.

## Online Maps

Maps are available at [www.wildlife.state.nm.us](http://www.wildlife.state.nm.us) for La Joya North and South Ponds, the Bernardo hunt areas, sandhill crane check stations and hunt boundaries and the designated areas in the lower Rio Grande Valley.

# Shooting Hours

## Lands Owned or Managed by the State Game Commission

**Wildlife Management Areas:** Bernardo, Casa Colorada, Charette Lake, Jackson Lake, La Joya, McAllister Lake, Wagon Mound, Tucumcari, and W.S. Huey. Shooting hours are ½ hour before sunrise to 1 p.m., unless otherwise noted.

**Exception:** Shooting hours for September teal on the Bernardo and La Joya areas are from ½ hour before sunrise to sunset. See pages 6 and 14–15 for areas and species.

Colin Neblett, E.S. Barker, Humphries, Marquez, Rio Chama, Sargent, Socorro-Escondida, Water Canyon, Sandhills Prairie Conservation Area, Prairie Chicken Areas and Big Hatchet Special Management Area. Shooting hours for migratory game birds are ½ hour before sunrise to sunset. See pages 6 and 14–15 for areas and species.

**Lake Holloman Wildlife Refuge:** May be closed during September teal season. For further information telephone: (505) 572-3931.

## Legal Shooting Hours on Other Lands

Shooting hours for migratory game birds are ½ hour before sunrise to sunset, unless otherwise noted.

The Bottomless Lakes Overflow is open to shooting ½ hour before sunrise to 1 p.m.

## Sunrise and Sunset Times at Albuquerque, N.M.

For points west of Albuquerque, add one minute for each 12 miles. For points east, subtract one minute for each 12 miles. Mountain Daylight Savings Time ends at 2 a.m., November 1, 2015.

September	Rise	Set	November	Rise	Set	January	Rise	Set
1	6:39	7:34	1	6:28	5:12	1	7:15	5:05
5	6:42	7:28	5	6:31	5:09	5	7:15	5:09
10	6:46	7:21	10	6:36	5:04	10	7:15	5:13
15	6:49	7:14	15	6:41	5:01	15	7:14	5:18
20	6:53	7:07	20	6:46	4:58	20	7:13	5:23
25	6:57	6:59	25	6:51	4:56	25	7:10	5:28

---

October	Rise	Set	December	Rise	Set	February	Rise	Set
1	7:01	6:51	1	6:56	4:55	1	7:06	5:35
5	7:04	6:45	5	7:00	4:54	5	7:03	5:39
10	7:08	6:38	10	7:04	4:55	10	6:58	5:44
15	7:12	6:32	15	7:07	4:56	15	6:53	5:49
20	7:17	6:26	20	7:10	4:58	20	6:48	5:54
25	7:21	6:20	25	7:13	5:01	25	6:42	5:58

Source: [www.timeanddate.com/worldclock/astronomy](http://www.timeanddate.com/worldclock/astronomy)

# Regulated Areas

## National Parks and Monuments

Closed to all hunting (except as permitted).

## National Wildlife Refuges

Closed to all hunting unless specified open under federal refuge regulations to hunting of particular species. U.S. Fish & Wildlife Service (USFWS) approved nontoxic shot is required for hunting on all national wildlife refuges.

Bosque del Apache National Wildlife Refuge: . . . . . (575) 835-1828

Bitter Lake National Wildlife Refuge: . . . . . (575) 622-6755

Las Vegas National Wildlife Refuge: . . . . . (505) 425-3581

Sevilleta National Wildlife Refuge is closed all season to hunting of any species.

## Native American Tribal Lands

Check with tribal officials about hunting on tribal lands.

## McGregor Range in Unit 28

For access information, contact the Fort Bliss U.S. Army Office: (915) 569-9505.

## Jornada Experimental Station

Jornada Experimental Station in Doña Ana County is closed to all public access without an escort.

## Chihuahuan Desert Research Center

The Chihuahuan Desert Rangeland Research Center (College Ranch) is closed to public access. Telephone: (575) 646-2807 or visit online:

<http://chihuahuansc.nmsu.edu/index.html>.

## Rio Grande Gorge

Orilla Verde Recreation Area (BLM) is closed to hunting.

## Middle Rio Grande Conservancy District

Telephone: (505) 864-7466 for more information and to obtain access along the Rio Grande.

## Portions of the Rio Grande in Valencia County

In the interest of public safety, areas posted along the Rio Grande in Valencia County are closed to migratory bird hunting. For more information regarding closures contact the NMDGF Northwest Office: (505) 222-4700.

## Lower Rio Grande Valley

Please refer to the Lower Rio Grande Valley maps available online: [www.wildlife.state.nm.us](http://www.wildlife.state.nm.us)

## New Mexico State Parks

Closed to all hunting except in designated areas. Contact state park superintendents for designated hunting areas and directions or telephone: (505) 827-7173.

1. **Bluewater, Caballo, El Vado, Heron, Conchas, Ute, Elephant Butte and Sumner Lake State Parks:** Open for common snipe, sora, Virginia rail and waterfowl.
2. **Navajo Lake State Park:** Open for common snipe, sora, Virginia rail and waterfowl. Closed areas include: Navajo Dam stilling basin includes the area from the crest of the bluff above the north bank of the San Juan River, to N.M. Hwy. 511 on the south side of the river for ¼ mile downstream from the dam; Cottonwood Campground and Day Use Area from the lower boundary of the Quality Waters to a fence ¼ mile downstream from the Cottonwood Day Use Area; Pine and Sims Mesa Recreation Area; and Navajo Reservoir Recreation Area south end.
3. **Rio Grande Valley State Park:** Closed to all hunting (no designated areas).

## Areas Owned or Managed by the New Mexico State Game Commission

USFWS-approved nontoxic shot is required for hunting on all New Mexico State Game Commission owned or managed areas. Vehicle use is restricted to designated areas. Legal shooting hours are listed on page 4. New Mexico State Game Commission owned or managed areas **not specifically listed as open** below or on pages 14–15 **are closed to hunting** for species listed in this booklet.

1. The W.S. Huey Management Area is open to hunting for dove on Monday, Wednesday and Saturday during established seasons.
2. Socorro-Escondida Wildlife Management Area is open to migratory game bird hunting during established seasons.
3. All Prairie Chicken Conservation Areas are open for dove hunting during established seasons.
4. Sandhill Prairie Conservation Area is open for dove during established seasons.
5. Bernardo Wildlife Management Area is open for September teal and other migratory game bird hunting. For area and species restrictions see pages 14–15.
6. La Joya Wildlife Management area is open for dove, September teal and other migratory game bird hunting. For area and species restrictions see pages 14–15.
7. Seven Rivers is open to dove, September teal and other migratory game bird hunting. For area and species restrictions see pages 14–15.
8. Wildlife Management Areas open to dove and band-tailed pigeon hunting include: Sargent, Humphries, Rio Chama, Urraca, Colin Neblett, Water Canyon, Marquez and E.S. Barker
9. Brantley (excluding Seven Rivers) is open for September teal, sandhill crane, dove and other migratory game bird hunting during established seasons (page 14).

## Private Property: Criminal Trespass

Entering private property without written permission from the landowner, manager or leasee may be adjudged criminal trespass under Chapter 30-14-1, NMSA 1978. Criminal trespass is a misdemeanor and punishable by fines up to \$1,000 and 364 days in jail. For complete descriptions of *what is* and *what is not* criminal trespass and the penalties involved, see page 37 of the "2015–16 New Mexico Hunting Rules and Information" available online at [www.wildlife.state.nm.us](http://www.wildlife.state.nm.us) and in print.

Local, county and federal access restrictions also may apply.

# Migratory Game Birds

Migratory game birds include doves, band-tailed pigeons, sandhill cranes, ducks, geese, coots, common moorhens, snipes, soras and Virginia rails.

Season dates and bag/possession limits are not final until published by the U.S. Fish & Wildlife Service in the "Federal Register" available online: [www.federalregister.gov/agencies/fish-and-wildlife-service](http://www.federalregister.gov/agencies/fish-and-wildlife-service).

## Migratory Game Bird Permits

The U.S. Fish & Wildlife Service requires all migratory game bird hunters obtain a Harvest Information Program number <sup>(1)</sup>. Residents and nonresidents must possess a separate permit number for each state in which they hunt migratory birds.

<sup>(1)</sup> Harvest Information Program number also known as Migratory Bird Permit number.

## Regular-season Sandhill Crane Permits

Each regular-season (Eastern) sandhill crane hunter must possess the appropriate license(s) (page 3), plus a federal Sandhill Crane Hunting Permit (free). There is no limit on the number issued and no application deadline. Permits are available online: [www.wildlife.state.nm.us](http://www.wildlife.state.nm.us) or at NMDGF offices. A federal Duck Stamp is not required to hunt sandhill cranes.

## Special Sandhill Crane Permits

Each special-season sandhill crane hunter must have the appropriate license(s) (page 3), plus a special-season permit issued by drawing (hunt codes and dates listed on page 11–12). Applications may be made online: [www.wildlife.state.nm.us](http://www.wildlife.state.nm.us) or telephone: 1-888-248-6866. Applications must be made by September 30 before 5 p.m. MDT. No more than four persons may apply per application, and no more than two persons for the youth-only hunt. Nonrefundable application fees are \$7 per resident and \$13 per nonresident. Additional information about hunt requirements will be given to successful applicants. A federal Duck Stamp is not required.

## Light and Dark Goose Hunts

For information about the light goose hunt at the Bosque del Apache and the dark goose hunt at the Las Vegas National Wildlife Refuge, please contact refuges directly (page 9).

## Free Light Goose Conservation Order Permit

A Light Goose Conservation Order Permit is required for hunters participating in the conservation order hunts Feb. 1–March 10, 2016 (see page 12). Permits are available free-of-charge at NMDGF offices and online. There is no deadline or limit to the number of permits issued. Participating hunters should report hunting efforts and harvests online: [www.wildlife.state.nm.us](http://www.wildlife.state.nm.us).

## Storage, Transportation and Shipment

One fully feathered wing must remain attached to all migratory game birds until transported to the hunter's home or storage facility. One fully feathered wing is not required for band-tailed pigeons or doves. No game of any kind may be placed or left at any location nor given to another person, unless that game is properly tagged by the hunter with a written statement. The statement must include the kind and number of game, the date and county where taken, the name and license number of the hunter and the date and place where the donation occurred. Tagging is required if the game is being transported by another person for the hunter or if the game has been left for cleaning, storage (this includes temporary storage), shipment or taxidermy services. Game may not be shipped, unless the package is marked on the outside with: 1, name and address of person shipping; and 2, name and address of the recipient.

## *Migratory Game Birds—continued*

### **Duck Stamp**

Federal law requires all waterfowl hunters 16 years of age or older to carry a valid federal Migratory Bird Hunting & Conservation Stamp (Duck Stamp) which is signed in ink across the face (page 3).

### **Harvest Information Program Number**

A Harvest Information Program (HIP) number<sup>(1)</sup> is required for all migratory bird hunters (page 3).

<sup>(1)</sup> Also known as Migratory Bird Permit number.

### **Legal Sporting Arms**

Migratory game birds may be taken with a shotgun fired from the shoulder, provided it is no larger than 10-gauge and incapable of holding more than three shells, or it is plugged with a one-piece filler that cannot be removed without disassembly which renders it incapable of holding more than three shells. Migratory game birds also may be taken with muzzle-loading shotguns firing shot, bow and arrows and crossbow and bolts.

### **Nontoxic Shot Mandatory**

Persons hunting any waterfowl, coot, common moorhen, crane (draw hunt only), snipe, sora, or Virginia rail with shotguns (including muzzle-loading shotguns) must use and possess only USFWS-approved nontoxic shot. Shotgunners hunting any species of migratory game birds on all State Game Commission owned or managed areas must use and possess only USFWS-approved nontoxic shot. Nontoxic shot is not required for dove, band-tailed pigeon and the Eastern sandhill crane hunt outside of New Mexico State Game Commission owned or managed areas.

Nontoxic shot includes: bismuth-tin, iron (steel), copper-clad iron, iron-tungsten, iron-tungsten-nickel, tungsten-bronze, tungsten-iron-copper-nickel, tungsten matrix, tungsten polymer, tungsten-tin-iron, tungsten-tin-bismuth, tungsten-tin-iron-nickel and tungsten-iron-polymer.

### **Wanton Waste Is Illegal**

Anyone who takes game birds must transport the edible portions of the meat from the field for human consumption.

### **Closed Seasons**

No person shall take migratory game birds except during the hours open to shooting or falconry as prescribed.

### **Legal Methods**

It is legal to use artificial decoys, blinds and dogs. It is illegal to shoot at any protected species from within a motor vehicle, power boat, sailboat or aircraft. Migratory birds may be taken from a motor-driven boat (or other craft with attached motor) or sailboat, provided that craft is resting at anchor, fastened within or alongside a fixed hunting blind or used solely as a means for retrieving killed birds.

## **Operation Game Thief**

**1-800-432-4263** (24 hours, 7 days a week) or **[www.wildlife.state.nm.us/ogt](http://www.wildlife.state.nm.us/ogt)**

Operation Game Thief (OGT) is a silent witness program funded by donations from individuals and organizations, not from taxes or license fees. OGT rewards range from \$50–\$750 and since 2005 have totaled more than \$80,875. If you have information about illegally taken wildlife or fish, contact your local game warden or telephone the OGT hotline.



# Federal Regulations

In addition to the New Mexico regulations set forth in this booklet, the following federal regulations apply to taking, possessing, transporting and storing migratory game birds (ducks, geese, coots, common moorhens, snipes, soras, rails, doves, band-tailed pigeons and sandhill cranes). Persons cited for violating federal regulations will be required to appear in federal court. The complete federal regulations (50 CFR-Part 20) is available online: [https://www.fws.gov/le/pdf/50\\_CFR\\_20.pdf](https://www.fws.gov/le/pdf/50_CFR_20.pdf).

## Illegal Methods

No person shall take migratory birds:

1. From a sink box (a low floating device that has a depression affording the hunter a means of concealment beneath the surface of the water).
2. From or with the aid or use of a car or other motor-driven land conveyance or from or with the aid of any aircraft.
3. By baiting (placing or directing placement of feed such as corn, wheat, salt, etc. for the purpose of causing, inducing or attempting to take any migratory game bird). Hunters should be aware a baited area is considered to be baited for 10 days after the removal of the bait.

## Importation of Harvested Migratory Birds

During any one-week beginning on Sunday, no person shall import more than:

1. 25 doves and 10 pigeons from any foreign country.
2. 10 ducks and 5 geese from any foreign country, except Canada and Mexico. Importation of doves and waterfowl from Canada and Mexico may not exceed Canadian or Mexican export limits which vary for different foreign provinces and states.

In addition, one fully feathered wing must remain attached to all harvested migratory game birds being transported or shipped between a port of entry and ones home or taxidermist. No person shall import harvested migratory game birds belonging to another person.

## Waterfowl Hunting on National Wildlife Refuges (NWR)

All state and federal regulations apply, including licenses, permits, method of take, bag limit, etc. Only USFWS-approved nontoxic shot may be used and possessed on refuges. Sporting arms must be unloaded and cased when transported.

**Bosque del Apache NWR:** The Bosque del Apache conducts Special Permit Light Goose Hunts and may allow limited hunting for dove in specific areas. For current information, maps and applications, visit: [www.fws.gov/southwest/refuges/newmex/bosque](http://www.fws.gov/southwest/refuges/newmex/bosque) or telephone: (575) 835-1828.

**Las Vegas NWR:** The Las Vegas National Wildlife Refuge conducts Special Permit Canada Goose Hunts and limited dove hunting. For current information, maps and applications, telephone: (505) 425-3581 or visit: [www.fws.gov/southwest/refuges/newmex/lasvegas](http://www.fws.gov/southwest/refuges/newmex/lasvegas).

**Bitter Lake NWR:** The Bitter Lake National Wildlife Refuge has limited hunting for duck, geese, coot, sandhill crane and dove. For information, maps and applications, telephone: (575) 625-4011 or visit: [www.fws.gov/southwest/refuges/newmex/bitterlake](http://www.fws.gov/southwest/refuges/newmex/bitterlake).

**Sevilleta NWR:** Sevilleta National Wildlife Refuge is closed all season to hunting of any species

## Report All Banded Birds!

NMDGF requests all banded birds harvested be reported online: [www.reportband.gov](http://www.reportband.gov) or by telephone: 1-800-327-BAND (2263).

# Eurasian Collared Dove

Eurasian collared-doves are Upland Game per rule (19.31.5 NMAC). Seasons, hunt areas, bag and possession limits, legal sporting arms types and transport information are available in the "2015–16 New Mexico Hunting Rules and Information" available online [www.wildlife.state.nm.us](http://www.wildlife.state.nm.us) and in print (pages 129–130).

## Dove and Band-tailed Pigeon Seasons

**Mourning and White-winged Dove: North Zone:** North of I-40 from the New Mexico/Arizona border to U.S. Hwy. 54 at Tucumcari; U.S. Hwy. 54 from Tucumcari to the New Mexico/Texas border. **South Zone:** South of I-40 from the New Mexico/Arizona border to U.S. Hwy. 54 at Tucumcari; U.S. Hwy. 54 from Tucumcari to the New Mexico/Texas border.

Hunt Area	Season Dates	Bag / Possession
North Zone . . . . .	Sept. 1–Nov. 9 . . . . .	15 singly or aggregate / 45
South Zone . . . . .	Sept. 1–Oct. 13 and Dec. 5–31 . . . . .	15 singly or aggregate / 45

### Band-tailed Pigeon

**Southwest Season:** South of U.S. Hwy. 60 and west of I-25. **Regular Season:** Remainder of the state outside the Southwest Season boundary.

Hunt Area	Season Dates	Bag / Possession
Southwest Season . . . . .	Oct. 1–14 . . . . .	2 per day / 6 in possession
Regular Season . . . . .	Sept. 1–14 . . . . .	2 per day / 6 in possession

## Dove and Band-tailed Pigeon Hunt Areas



# Sandhill Crane Seasons

## Applying for Sandhill Crane Hunts

Applications may be made online or toll-free. The application deadline is September 30 before 5 p.m. MDT. No more than four persons may apply per application and no more than two persons per youth-only hunt application. A federal Duck Stamp is not required to hunt sandhill cranes. Cranes are often found on private property. To access private property, hunters must obtain and possess prior written permission.

### Eastern Hunt (Eastern)

Chaves, Curry, De Baca, Eddy, Lea, Quay and Roosevelt counties. All Eastern Season sandhill crane hunters must possess an appropriate license (page 3), plus a federal Regular Season Sandhill Crane Permit (free). There is no limit of permits issued nor deadline to apply. Permits are available at NMDGF offices and online. Eastern hunt dates are October 31–January 31, 2016.

### Southwest Hunt (SW)

Parts of Sierra, Doña Ana, Luna, Grant and Hidalgo counties: Bounded on the south by the New Mexico / Mexico border; Bounded on the west by the New Mexico / Arizona border north to I-10; Bounded on the north by I-10 east to US 180, north to NM 26, east to NM 27, north to NM 152 and east to I-25; Bounded on the east by I-25 south to I-10, west to the Luna county line and south to the New Mexico / Mexico border.

A maximum of 60 permits are issued for the SCR-0-105 hunt and 45 permits for the SCR-0-107 hunt. The Harvest Questionnaire / Bill Measurement Card must be returned to NMDGF no later than five days after hunting. **Do not report hunt results online.**

### Estancia Valley Hunt (EV)

Portions of Bernalillo, Santa Fe and Torrance counties: Bounded on the west by NM 55 starting at Mountainair and north to NM 337, north to NM 14 and north to I-25; Bounded on the north by I-25 east to US 285; Bounded on the east by US 285 south to US 60; Bounded on the south by US 60 from US 285 west to NM 55 at Mountainair.

A maximum of 65 permits are issued by drawing for the SCR-0-102 hunt. Hunters who draw Special Estancia Valley Crane Permits must: 1. Check all cranes harvested at the designated check station; and 2. Return the Harvest Questionnaire to NMDGF no later than five days after hunting. **Do not report hunt results online.**

### Middle Rio Grande Valley (MRGV) Hunts and Resident Youth-only Hunt

Valencia and Socorro counties. A maximum of 70 permits are issued by drawing for the SCR-0-101 hunt, 50 permits for the SCR-0-103 hunt and 40 permits for the SCR-0-104 and SCR-0-106 hunts.

A maximum of 24 permits will be available for the SCR-0-109 resident youth-only hunt. Hunters will be assigned to hunt on either Bernardo or Casa Colorada WMAs.

Hunters who draw Special MRGV Crane Permits must: 1. Check all cranes harvested at the designated check station; and 2. Return the Harvest Questionnaire to NMDGF no later than five days after hunting. **Do not report hunt results online.**

### Harvest Questionnaires and hunt letters are available online:

<http://www.wildlife.state.nm.us/hunting/applications-and-draw-information/>.

### Check Stations: Estancia and Middle Rio Grande Valleys

Hunters are encouraged to bring harvested ducks to check stations for voluntary testing of avian influenza in dabbling ducks. Testing will be offered by the New Mexico Department of Game and Fish at each sandhill crane check station in the Middle Rio Grande Valley and Estancia Valley.

Middle Rio Grande Valley . . . . . Oct. 24–25; Nov. 7, 14–15 and 28–29; Jan. 9–10

Estancia Valley . . . . . Oct. 24–Nov. 1

## Sandhill Crane Seasons—continued

Hunt Area	Hunt Code	Season Dates	Bag / Possession
Eastern Hunt . . . .	N/A . . . . .	Oct. 31–Jan. 31, '16 . .	3 per day / 6 in possession
Estancia Valley Hunt	SCR-0-102 . . . .	Oct. 24–Nov. 1 . . . .	3 per day / 6 in possession
MRGV Hunts . . . .	SCR-0-101 . . . .	Oct. 24–25 . . . . .	2 per season
	SCR-0-103 . . . .	Nov. 14–15 . . . . .	2 per season
	SCR-0-104 . . . .	Nov. 28–29 . . . . .	2 per season
	SCR-0-106 . . . .	Jan. 9–10, '16 . . . . .	2 per season
MRGV Youth-only .	SCR-0-109 . . . .	Nov. 7 . . . . .	2 total
Southwestern . . . .	SCR-0-105 . . . .	Oct. 24–Nov. 1 . . . .	2 per season
	SCR-0-107 . . . .	Jan. 2–3, '16 . . . . .	2 per season

## Central Flyway Seasons

Possession limits are 3 times the daily bag limit for all species, unless otherwise noted.

### North Zone (East of the Continental Divide and north of I-40 and U.S. Hwy. 54 at Tucumcari)

Species	Season Dates	Bag / Possession
Ducks . . . . .	Oct. 27–Jan. 31, '16 . .	.6 ducks singly or aggregate <sup>(1)</sup>
<sup>(1)</sup> Aggregate may consist of no more than: 5 mallards, only 2 of which may be female (Mexican-like ducks are considered part of the mallard bag limit); 3 scaup; 3 wood ducks; 2 redhead; 2 hooded merganser; 2 pintail; and 2 canvasback.		
American Coot . . . . .	Oct. 27–Jan. 31, '16 . .	15 daily / 45 in possession

### South Zone (East of the Continental Divide and south of I-40 and U.S. Hwy. 54 at Tucumcari)

Species	Season Dates	Bag / Possession
Ducks and . . . . .	Oct. 27–Jan. 31 '16 . .	Same as North Zone / 3 times daily bag
American Coot		

### North and South Zones (See above North Zone and South Zone boundary descriptions)

Species	Season Dates	Bag / Possession
September teal . . . . .	Sept. 12–19 . . . . .	.6 singly or aggregate / 18 in possession (blue-winged, cinnamon, green-winged)
Common Moorhen . . . .	Sept. 26–Dec. 4 . . . .	1 daily / 3 in possession
Virginia Rail, Sora . . . .	Sept. 12–Nov. 20 . . . .	10 singly or aggregate / 20 in possession
Common Snipe . . . . .	Oct. 24–Feb. 7 '16 . . .	8 daily / 24 in possession
Dark Goose <sup>(2)</sup> . . . . .	Oct. 17–Jan. 31 '16 . . .	5 daily / 15 in possession (Canada and white-fronted goose)
MRGV Dark Goose <sup>(3)</sup> . . .	Dec. 26–Jan. 19, '16 . .	2 per day / 2 per season (Canada and white-fronted goose)

<sup>(2)</sup> MRGV (Middle Rio Grande Valley) is closed to dark goose hunting in the regular season.

<sup>(3)</sup> MRGV (Middle Rio Grande Valley) includes Valencia, Socorro and Sierra counties.

Light Goose . . . . . Oct. 17–Jan. 31 '16 . . .50 daily / No possession limit (snow and Ross's goose)

Light Goose Conservation Order <sup>(4)</sup> (snow and Ross's goose) Feb. 1–Mar. 10 '16 . . .No bag limit / No possession limit

<sup>(4)</sup> Free permit required (page 7). Approved tools include electronic calls and unplugged shotguns. Shooting until 1/2 hour after sunset, except on Wildlife Management Areas (WMAs).

## Central Flyway



## Pacific Flyway



## Pacific Flyway Seasons

Possession limits are 3 times the daily bag limit for all species, unless otherwise noted.

### North Zone (West of the Continental Divide and north of I-40)

Species	Season Dates	Bag / Possession
Goose . . . . .	Sept. 26–Oct. 11 . . . Oct. 24–Jan. 22, '16	3 Canada and brant / 9 in possession 10 white-fronted/ 30 in possession 20 light / 60 in possession

### South Zone (West of the Continental Divide and south of I-40)

Species	Season Dates	Bag / Possession
Goose . . . . .	Oct. 10–Jan. 24, '16. . .	3 Canada and brant / 9 in possession 10 white-fronted/ 30 in possession 20 light / 60 in possession

### North and South Zones (See above North Zone and South Zone boundary descriptions)

Species	Season Dates	Bag / Possession
Duck . . . . .	Oct. 10– Jan. 22, '16 . . .	7 ducks aggregate <sup>(1)</sup> / 3 times daily bag
<sup>(1)</sup> Aggregate may include no more than 2 female mallards, 2 redheads, 2 pintail, 2 canvasback.		
Scaup . . . . .	Oct. 10–Jan. 3, '16 . . .	3 <sup>(2)</sup> / 9 possession.
<sup>(2)</sup> May be part of the aggregate bag for duck.		
American Coot and Common Moorhen . . . . .	Oct. 10–Jan. 22, '16. . .	25 daily, singly or aggregate / 75 in possession
Common Snipe . . . . .	Oct. 24–Feb. 7, '16 . . .	8 daily / 24 in possession
Sora and Virginia Rail . . . . .	Sept. 12–Nov. 20 . . .	25 daily, singly or aggregate / 75 in possession

# Game Commission Owned or Managed Areas

State Game Commission owned or managed areas listed below are open to migratory game bird hunting. No hunting is allowed outside of open seasons or for species not listed. No camping is allowed, and vehicles are restricted to designated areas. Shooting hours are listed on page 4.

## Days Open to Migratory Game Bird Hunting (• = Days Open)

Wildlife Management Areas	Species	Sun.	Mon.	Tue.	Wed.	Thr.	Fri.	Sat.
Seven Rivers . . . . .	September teal, Sandhill crane, Dove, Group II	•	•	•	•	•		•
W.S. Huey . . . . .	Dove		•		•			•
Brantley (excluding Seven Rivers).	September teal, Sandhill crane, Dove, Group II	•	•	•	•	•	•	•
Bernardo (South) . . . . .	September teal	•	•	•	•	•	•	•
South of U.S. 60 in Bernardo will be open for September teal and youth-waterfowl days. North of U.S. 60 in Bernardo is closed except during the Light Goose Conservation Order.								
Bernardo (The Quagmire) . . . . .	Group I	•		•		•		
Bernardo (Ponds) . . . . .	Group I		•		•			•
Bernardo (Youth Unit) . . . . .	Group I		•		•			•
Wagon Mound and Charette Lake	Group II		•		•			•
La Joya and Wagon Mound. . . . .	September teal	•	•	•	•	•	•	•
La Joya (north portion) . . . . .	Group I		•		•			•
That portion north of the main east/west entrance road and west of the railroad tracks.								
La Joya (south portion) . . . . .	Group I	•		•		•		
That portion south of the main east/west entrance road and west of the railroad tracks.								
La Joya (east of railroad tracks)	Dove, Group I	•	•	•	•	•	•	•
Jackson Lake (west of NM 170).	Group II		•		•			•
Tucumcari . . . . .	September teal	•	•	•	•	•	•	•
Tucumcari . . . . .	Group II	•			•			•
McAllister Lake. . . . .	Group III		•		•			•
McAllister Lake. . . . .	Dove, September teal	•	•	•	•	•	•	•
All Prairie Chicken Areas, . . . . .	Dove	•	•	•	•	•	•	•
Sandhills Prairie Conservation Area, Big Hatchet Special Management Area								
Socorro-Escondida . . . . .	All migratory birds	•	•	•	•	•	•	•

## Days Open to Migratory Game Bird Hunting—continued.

Wildlife Management Area	Species	Sun.	Mon.	Tue.	Wed.	Thr.	Fri.	Sat.
Sargent, Humphries, Rio Chama, Urraca, Colin Neblett, Water Canyon, Marquez and E.S. Barker	Dove, Band-tailed pigeon	•	•	•	•	•	•	•
Sandia Ranger District (bow hunting only)	All migratory birds	•	•	•	•	•	•	•

**Group I:** Includes ducks, light geese, dark geese (as part of the MRGV dark goose season), Virginia rail, sora, common moorhen, American coot and common snipe.

**Group II:** Includes ducks, all geese, Virginia rail, sora, common moorhen, American coot and common snipe.

**Group III:** Includes ducks, light geese, Virginia rail, sora, common moorhen, American coot, common snipe and doves.

## Youth Waterfowl Seasons

### Federal Youth Waterfowl Days (Residents and Nonresidents)

Hunt Area	Zone	Season Dates	Bag / Possession
Central Flyway	North	Sept. 26–27	See pages 12–13
	South	Oct. 10–11	See pages 12–13
Pacific Flyway	North and South	Oct. 3–4	See pages 12–13

No application is required. Youth hunters must be under 16 years of age and fully licensed (federal Duck Stamp and special hunt permit are not required). An adult 18 years of age or older must accompany the youth in the field. The adult may not hunt ducks, but may if properly licensed participate in other seasons open during Youth Waterfowl Days.

The youth hunter may take only ducks, coots and moorhens. No sandhill cranes, geese or other waterfowl may be taken, unless it is open season for these species. Bag and possession limits are the same as the regular seasons.

Legal shooting hours on Wildlife Management Areas for migratory game birds are ½ hour before sunrise to 1 p.m., unless otherwise noted.

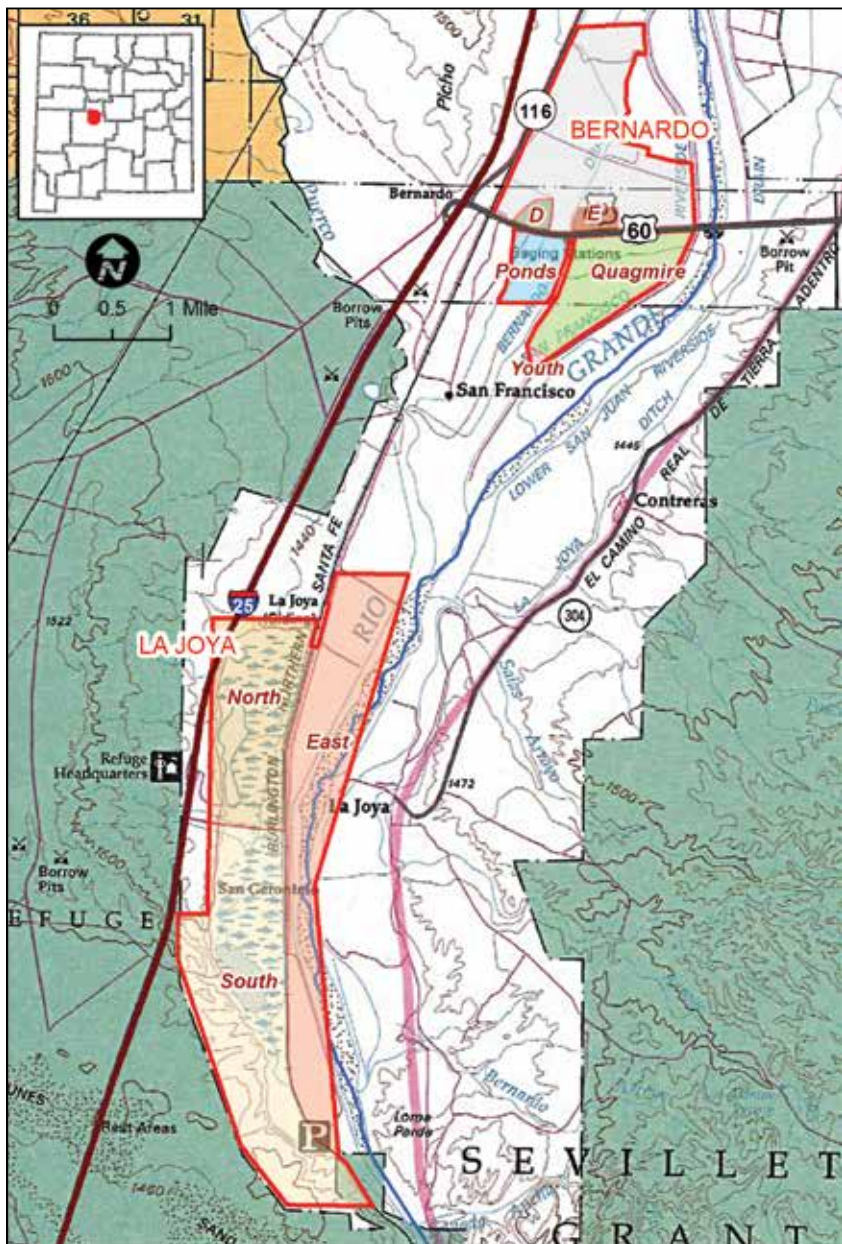
WMAs open during Youth Waterfowl Days include Bernardo, La Joya, Wagon Mound, Charette Lake, McAllister Lake and Tucumcari.

### Youth Waterfowl Hunts at Bernardo (Residents Only)

Bernardo Youth Hunt Unit is open for waterfowl hunts for resident youth and their guests. Blind selection will be available first-come, first-served from ½ hour before sunrise to 1 p.m. Youth hunters must be accompanied by a supervising adult. Supervising adults may not hunt, but must be legally licensed. No more than four people per blind are allowed—at least half of all persons must be youth hunters.

# Bernardo and La Joya Wildlife Management Areas

Maps of the Bernardo and La Joya WMAs are available online: [www.wildlife.state.nm.us](http://www.wildlife.state.nm.us).





# Bernardo Wildlife Management Area

## Bernardo Ponds, Quagmire and Youth Hunt Unit



**Title VI Funding:** Certain programs of the New Mexico Department of Game and Fish receive federal funds from the U.S. Department of the Interior. These programs are therefore subject to requirements of the New Mexico Human Rights Act and Title VI of the 1964 Civil Rights Act, which prohibit discrimination because of ancestry, sex, race, color, religion, national origin, age or physical or mental handicap. If you believe you have been discriminated against in any program, activity or facility, please send a detailed description of the incident by certified mail to the New Mexico Department of Game and Fish. If you desire further information on Title VI, write: New Mexico Department of Game and Fish, ADA Coordinator, P.O. Box 25112, Santa Fe, NM 87504 or Office of Equal Opportunity, U.S. Dept. of the Interior, Office of the Secretary, Washington, DC 20240. The Department of Game and Fish will schedule public meetings and operate facilities that are accessible to physically impaired persons. Reasonable accommodations will be made for other impairments, including hearing and sight. If special aids are required, call (505) 476-8027 or write to P.O. Box 25112, Santa Fe, NM 87504 at least three working days prior to the meeting date. To initiate a complaint, write to the U.S. Fish and Wildlife Service, Division of Federal Assistance, 4401 Fairfax Drive, Mail Stop: MBSP-4020, Arlington, Virginia 22203.

**Fondos de Titulo VI:** Ciertos programas del New Mexico Department of Game and Fish reciben fondos federales del U.S. Department of the Interior. Estos programas son subyugados a requisitos de la ley de New Mexico Human Rights Act and Title VI of the 1964 Civil Rights Act, que prohíben la discriminación por razones de ascendencia, sexo, raza, color, religión origen nacional, edad o impedimento físico o mental. Si usted cree que ha sufrido discriminación en cualquier programa, actividad o comodidades, por favor envíe por correo certificado una descripción detallada al Department of Game and Fish. Si desea más información sobre Título VI, por favor escriba a: Department of Game and Fish, ADA Coordinator, P.O. Box 25112, Santa Fe, NM 87504 or Office of Equal Opportunity, U.S. Dept. of the Interior, Office of the Secretary, Washington, DC 20240. Al programar sus reuniones públicas, el Department of Game and Fish operará en facilidades que proveen acceso para personas con incapacidades físicas. Las personas con otras incapacidades, inclusive del oído y de la vista, recibirán acceso razonable a las reuniones. Si usted necesita algún auxiliar o ayuda especial, por favor llame al número (505) 476-8027 o escriba a P.O. Box 25112, Santa Fe, NM 87504, por lo menos tres días antes de la reunión. Para iniciar una queja, escriba a U.S. Fish and Wildlife Service, Division of Federal Assistance, 4401 Fairfax Drive, Mail Stop: MBSP-4020, Arlington, Virginia 22203.

# Falconry Seasons

## Falconry Upland Game Seasons

Refer to the *2015-16 New Mexico Hunting Rules & Info* available online and in-print (page 130)

## Falconry Migratory Game Bird Seasons

All Wildlife Management Areas shall be open to falconry waterfowl hunting each day of the established falconry season. The portion of Jackson Lake east of N.M. Hwy. 170 shall be open to falconry-only migratory game bird hunting during the established seasons.

Area	Date	Bag / Possession
------	------	------------------

### Dove

Statewide . . . .	Sept. 1–Nov. 12. . . . .	.3 singly or in aggregate / 9 in possession
	Nov. 28–Dec. 31 . . . . .	.3 singly or in aggregate / 9 in possession

Note: Eurasian collared doves are an upland game species per rule (19.31.5 NMAC). See page 10.

### Band-tailed Pigeon

Central Flyway and Pacific Flyway

North Zone . . . .	Sept. 1–14 . . . . .	.2 singly or in aggregate / 6 in possession
--------------------	----------------------	---------------------------------------------

South Zone . . . .	Oct. 1–14. . . . .	.2 singly or in aggregate / 6 in possession
--------------------	--------------------	---------------------------------------------

### Sandhill Crane

Eastern <sup>(1)</sup> . . . .	Oct. 17–Jan. 31, '16 . . . . .	.3 singly or in aggregate / 6 in possession
--------------------------------	--------------------------------	---------------------------------------------

Estancia Valley <sup>(2)</sup>	Oct. 24–Dec. 22 . . . . .	.3 singly or in aggregate / 6 in possession
--------------------------------	---------------------------	---------------------------------------------

<sup>(1)</sup> Sandhill Crane Permit (free) in possession is required while hunting.

<sup>(2)</sup> Falconers are requested to report hunting efforts and harvests online.

### Duck and American Coot

Central Flyway

North Zone . . . .	Sept. 12–19. . . . .	.3 singly or in aggregate / 9 in possession
--------------------	----------------------	---------------------------------------------

	Sept. 26–27 <sup>(3)</sup> . . . . .	.3 singly or in aggregate / 9 in possession
--	--------------------------------------	---------------------------------------------

	Oct. 27–Jan. 31, '16 . . . . .	.3 singly or in aggregate / 9 in possession
--	--------------------------------	---------------------------------------------

South Zone . . . .	Sept. 12–19. . . . .	.3 singly or in aggregate / 9 in possession
--------------------	----------------------	---------------------------------------------

	Oct. 10–11 <sup>(3)</sup> . . . . .	.3 singly or in aggregate / 9 in possession
--	-------------------------------------	---------------------------------------------

	Oct. 27–Jan. 31, '16 . . . . .	.3 singly or in aggregate / 9 in possession
--	--------------------------------	---------------------------------------------

Pacific Flyway

All Zones . . . .	Oct. 3–4 <sup>(3)</sup> . . . . .	.3 singly or in aggregate / 9 in possession
-------------------	-----------------------------------	---------------------------------------------

	Oct. 10–Jan. 22, '16 . . . . .	.3 singly or in aggregate / 9 in possession
--	--------------------------------	---------------------------------------------

<sup>(3)</sup>Youth Waterfowl Days.

### Scaup

Pacific Flyways

All Zones . . . .	Oct. 10–Jan. 3, '16 . . . . .	.3 singly or in aggregate / 9 in possession
-------------------	-------------------------------	---------------------------------------------

### Common Snipe

Central

All Zones . . . .	Oct. 24–Feb. 7, '16 . . . . .	.3 singly or in aggregate / 9 in possession
-------------------	-------------------------------	---------------------------------------------

Pacific Flyway

All Zones . . . .	Oct. 24–Feb. 7, '16 . . . . .	.3 singly or in aggregate / 9 in possession
-------------------	-------------------------------	---------------------------------------------

## Common Moorhen

### Central Flyway

All Zones . . . . Sept. 26–Jan. 10, '16 . . . 3 singly or in aggregate / 9 in possession

### Pacific Flyway

All Zones . . . . Oct. 3–4 <sup>(3)</sup> . . . . . 3 singly or in aggregate / 9 in possession

Oct. 10–Jan. 22, '16 . . . 3 singly or in aggregate / 9 in possession

<sup>(3)</sup>Youth Waterfowl Days

## Sora and Virginia Rail

### Central Flyway

All Zones . . . . Sept. 12–Dec. 27 . . . . 3 singly or in aggregate / 9 in possession

### Pacific Flyway

All Zones . . . . Sept. 12–Nov. 20 . . . . 3 singly or in aggregate / 9 in possession

## Light Goose

### Central Flyway

All Zones . . . . Oct. 17–Jan. 31, '16 . . . 3 singly or in aggregate / 9 in possession

### Pacific Flyway

North Zone . . . Sept. 26–Oct. 11 . . . . 3 singly or in aggregate / 9 in possession

Oct. 24–Jan. 22, '16 . . . 3 singly or in aggregate / 9 in possession

South Zone . . . Oct. 10–Jan. 24, '16 . . . 3 singly or in aggregate / 9 in possession

## Dark Goose

### Central Flyway

MRGV . . . . . Dec. 26–Jan. 19, '16 . . . 3 singly or in aggregate / 9 in possession

All Zones . . . . Oct. 17–Jan. 31, '16 . . . 3 singly or in aggregate / 9 in possession

(excluding MRGV)

### Pacific Flyway

North Zone . . . Sept. 26–Oct. 11 . . . . 3 singly or in aggregate / 9 in possession

Oct. 24–Jan. 22, '16 . . . 3 singly or in aggregate / 9 in possession

South Zone . . . Oct. 10–Jan. 24 , '16 . . . 3 singly or in aggregate / 9 in possession



New Mexico Department of Game and Fish

## Donation Certificate

Use this certificate if you give game birds or parts to a person or organization.

I, \_\_\_\_\_ on this day: \_\_\_/\_\_\_/\_\_\_,  
(Full name of license holder. Please print.) (Date of transaction)

located at: \_\_\_\_\_,  
(Place of transaction)

hereby convey to: \_\_\_\_\_ the following game animal(s) or parts:  
(Person or organization receiving donation)

taken under my valid license number: \_\_\_\_\_

and taken on: \_\_\_/\_\_\_/\_\_\_.

Donor: \_\_\_\_\_ Recipient: \_\_\_\_\_  
(Signature of license holder) (Signature of recipient)

By signing we understand and acknowledge to postdate, predate or otherwise falsify a Donation Certificate is unlawful.



Cinnamon teal ducks.  
NMDGF photo by Mark L. Watson.

## Avian Influenza

Hunters are encouraged to bring harvested ducks to check stations for voluntary testing of avian influenza in dabbling ducks. Testing will be offered by the New Mexico Department of Game and Fish at each sandhill crane check station in the Middle Rio Grande Valley and Estancia Valley.

Middle Rio Grande Valley . . . . . Oct. 24–25; Nov. 7, 14–15 and 28–29; Jan. 9–10  
Estancia Valley . . . . . Oct. 24–Nov. 1

Since December 2014, several cases of avian influenza have been confirmed nationwide in the Pacific, Central and Mississippi flyways. Last April, a cinnamon teal in New Mexico tested positive. The disease is highly pathogenic and has been found in wild birds and backyard and commercial poultry flocks. The Centers for Disease Control and Prevention (CDC) considers the human risk of HPAI H5 infections to be low. No human cases have been detected in the United States or other countries. Although the disease poses no human threat, it is advisable always to take normal precautions to avoid disease when handling wild game.

### Make these precautions routine when handling game birds:

1. Do not harvest, handle or eat any wild bird found dead or suspected to be sick.
2. Never eat, drink or smoke while handling game birds.
3. Always wear rubber, disposable latex or nitrile gloves while handling and cleaning game birds or when cleaning bird feeders.
4. Wash hands thoroughly after removing gloves and before touching exposed skin or hair, before using a cell phone or other device and before eating or smoking. Wash with soap and water for 30 seconds or longer or use an alcohol-based hand sanitizer.
5. Always launder field clothes each day after handling birds.
6. Wash all tools and work surfaces used to clean game birds. After washing with soap and water, disinfect everything with a 10-percent solution of chlorine bleach.
7. Separate raw meat, and anything it may have touched, from cooked or ready-to-eat foods.
8. Cook game birds thoroughly to an internal temperature of 165°F.
9. Work or train upwind from crated live birds to decrease the risk of infection from airborne particulates (dust, feathers or dander).
10. Monitor your health for signs of flu-like symptoms for a week after handling birds. Should you feel ill, visit your healthcare provider.

### Raptors are susceptible to avian influenza.

Raptors are extremely susceptible to current North American strains of avian influenza. Falconers are advised to use caution when hunting waterfowl.

### Dogs are not considered at risk.

No cases of dog infection from the avian influenza virus have been documented. However, owners should prevent contact of dogs with game birds that are obviously sick or found dead in the field. Never feed dogs raw meat from game birds. Though the canine influenza virus is different from the avian influenza viruses, owners should remain informed and consult a veterinarian for more information about influenza in dogs and other pets. No cases of cat infection from avian influenza strains (H5N2 or H5N8) have been documented in North America.

