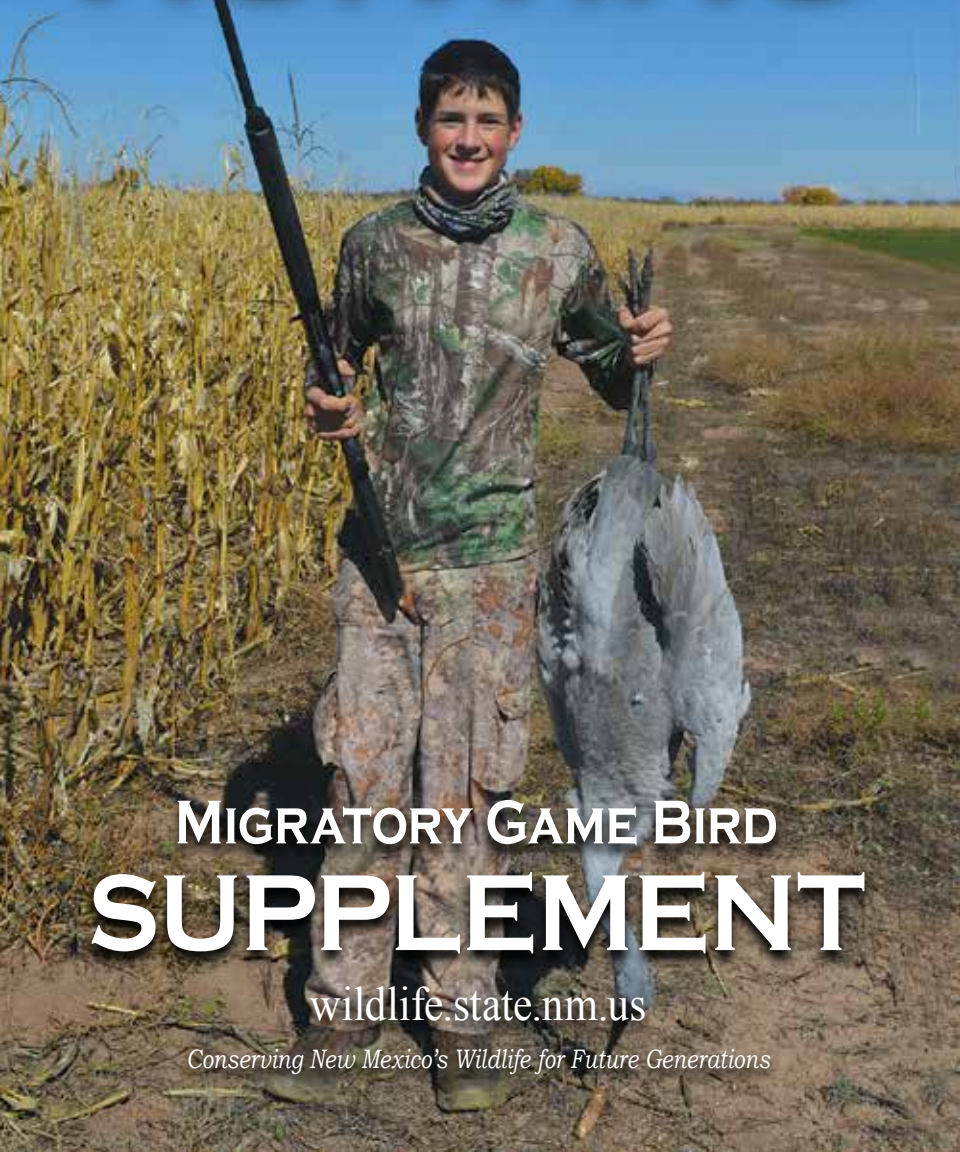




New Mexico Department of Game and Fish

2017–2018 NEW MEXICO

HUNTING



MIGRATORY GAME BIRD

SUPPLEMENT

wildlife.state.nm.us

Conserving New Mexico's Wildlife for Future Generations

General Information

Our Mission

To conserve, regulate, propagate and protect the wildlife and fish within the State of New Mexico, using a flexible management system that ensures sustainable use for public food supply, recreation and safety, and to provide for off-highway motor vehicle recreation that recognizes cultural, historic and resource values while ensuring public safety.

New Mexico State Game Commissioners

P.O. Box 25112, Santa Fe, NM 87504

Paul M. Kienzle III, Chairman,
William "Bill" Montoya, Vice Chairman
Robert Espinoza, Sr.
Ralph Ramos
Robert Ricklefs
Elizabeth Atkinson Ryan
Thomas "Dick" Salopek

New Mexico Department of Game and Fish

One Wildlife Way, Santa Fe, NM 87507 1-888-248-6866

Alexandra Sandoval, Director
Donald Jaramillo, Deputy Director
Chris Chadwick, Assistant Director
James Comins, Assistant Director

Regional Offices

Northwest Office: 3841 Midway Place NE, Albuquerque, NM 87109 (505) 222-4700
Southwest Office: 2715 Northrise Drive, Las Cruces, NM 88011 (575) 532-2100
Northeast Office: 215 York Canyon Road, Raton, NM 87740 (575) 445-2311
Southeast Office: 1912 W. Second Street, Roswell, NM 88201 (575) 624-6135

Important Telephone Numbers

General Information, License Sales and Harvest Reporting 1-888-248-6866
Hunter Education Program Information (505) 222-4731
Off Highway Vehicle (OHV) Information (505) 222-4712
Operation Game Thief 1-800-432-4263
24-hour Depredation Hotline 1-888-727-4883
TDD (number for hearing impaired) (505) 476-8143

Only Migratory Game Bird Seasons

The "2017–18 New Mexico Hunting: Migratory Game Bird Supplement" is only for migratory game bird seasons which include American coot, band-tailed pigeon, common moorhen, common snipe, dark geese, dove, ducks, light geese, sandhill crane, sora and Virginia rail. Hunted waterfowl in New Mexico includes ducks and geese (birds in the family *Anatidae*) and coots. Hunting swans in New Mexico is not allowed.

Upland game seasons are not in this supplement. Upland game seasons for Eurasian collared dove, grouse, quail, pheasant and squirrel are contained in the "2017–18 New Mexico Hunting Rules and Information." Refer to it for upland game seasons, hunting regulations, license requirements and fees.

Available online and in print, the "2017–18 New Mexico Hunting Rules and Information" also provides essential information about game-hunting licenses and fees, descriptions of public- and private-land uses, definition of criminal trespass, and information about hunter education. Off-highway vehicle use, the Mentored Youth-Hunter Program and Operation Game Thief also are contained in this publication.



License Requirements

Game Hunting License, Validations, Stamps and HIP Number

All migratory game bird hunters must possess a Game Hunting License or Game Hunting & Fishing License, Habitat Management & Access Validation (except as defined below), Habitat Improvement Stamp if applicable, and Harvest Information Program (HIP) number. For license fees and information, as well as general regulations, refer to the "2017–18 New Mexico Hunting Rules and Information" booklet (available online and in print).

Habitat Management & Access Validation Once each license year (April 1–March 31) all hunters, trappers and anglers must purchase a Habitat Management & Access Validation. Validations are not required for hunters and anglers ages 17 years and younger and not required for 70 years and older resident anglers or 100%-disabled resident veterans in conjunction with their free license.

Habitat Improvement Stamp For U.S. Forest Service and BLM lands in New Mexico, all hunters, trappers and anglers must purchase a Habitat Improvement Stamp. Purchased separately and valid for one license year, this stamp **is not required** for trappers and anglers ages 11 years and younger, 70 years and older resident anglers or 100%-disabled resident veterans in conjunction with their free license. Funds from the Habitat Improvement Stamp are used to protect and increase wildlife and fishery habitat throughout the state. Since its inception in 1986, this program has invested more than \$46 million to protect, improve and create new habitat in New Mexico.

Harvest Information Program Number (HIP) Each license year, migratory bird hunters must obtain a HIP number. Residents and nonresidents must possess a separate permit number for each state in which they hunt migratory birds.

Duck Stamp All waterfowl hunters who are ages 16 years and older must possess a federal Migratory Bird Hunting & Conservation Stamp (Duck Stamp), available online: www.wildlife.state.nm.us or www.fws.gov/birds/get-involved/duck-stamp/buy-duck-stamp.php and at U.S. Post Offices, NMDGF offices and at all license vendors.

Hunter Education or Mentored Youth Number Required Before purchasing any type of firearm hunting license, individuals younger than 18 years of age must either: 1, possess a Hunter Education number from New Mexico or another state; or 2, possess a New Mexico Mentored-Youth Hunter Program number. Certification and/or registration numbers must be carried at all times while hunting.

Youth Hunts To qualify for youth hunts, applicants must be 17 years of age or younger on opening day of the hunt and must possess a Hunter Education Course Certificate number or a Mentored Youth-Hunter Program registration number.

Federal Youth Waterfowl Days No application or special-hunt permit is required. Youth hunters must be 17 years of age or younger and fully licensed. Hunters 16 years of age and older must possess a federal Duck Stamp. An adult 18 years of age or older must accompany the youth in the field. For more information about this hunt, see pages 3, 7, and 15.

Application Deadline: Aug. 23, 2017

Deadline for all special-permit sandhill crane hunts is August 23, 2017 before 5 p.m. MDT.

Online Maps

Maps are available at www.wildlife.state.nm.us for La Joya North and South Ponds, the Bernardo hunt areas, sandhill crane check stations and hunt boundaries, and designated areas in the lower Rio Grande Valley.

New: Hammond and Retherford WMAs

Hammond and Retherford Tract WMAs are open for waterfowl hunting during established seasons (page 14).

Shooting Hours

Lands Owned or Managed by the State Game Commission

Wildlife Management Areas

Bernardo, Casa Colorada, Charette Lake, Jackson Lake, La Joya, McAllister Lake, Wagon Mound, Tucumcari, and W.S. Huey. Shooting hours are ½ hour before sunrise to 1 p.m., unless otherwise noted.

Exception: Shooting hours for September teal on the Bernardo and La Joya areas are from ½ hour before sunrise to sunset. See pages 6 and 14–15 for areas and species.

Colin Neblett, E.S. Barker, Humphries, Marquez, Rio Chama, Sargent, Socorro-Escondida, Water Canyon, Sandhills Prairie Conservation Area, Prairie Chicken Areas and Big Hatchet Special Management Area. Shooting hours for migratory game birds are ½ hour before sunrise to sunset. See pages 6 and 14–15 for areas and species.

Lake Holloman Wildlife Refuge

May be closed during September teal season. For further information telephone: (505) 572-3931.

Bottomless Lakes Overflow

The Bottomless Lakes Overflow is open to shooting ½ hour before sunrise to 1 p.m.

Legal Shooting Hours on Other Lands

Shooting hours for migratory game birds are ½ hour before sunrise to sunset, unless otherwise noted.

Sunrise and Sunset Times at Albuquerque, N.M.

For points west of Albuquerque, add one minute for each 12 miles. For points east, subtract one minute for each 12 miles. Mountain Daylight Savings Time ends 2 a.m., Sunday, November 5, 2017.

September	Rise	Set	November	Rise	Set	January	Rise	Set
1.....	6:39....	7:32	1.....	7:28....	6:11	1.....	7:14....	5:05
5.....	6:42....	7:27	5.....	6:31....	5:08	5.....	7:15....	5:09
10.....	6:46....	7:20	10.....	6:36....	5:04	10.....	7:15....	5:13
15.....	6:49....	7:12	15.....	6:41....	5:00	15.....	7:14....	5:18
20.....	6:53....	7:05	20.....	6:46....	4:57	20.....	7:12....	5:23
25.....	6:57....	6:58	25.....	6:51....	4:56	25.....	7:10....	5:28

October	Rise	Set	December	Rise	Set	February	Rise	Set
1.....	7:01....	6:50	1.....	6:56....	4:54	1.....	7:05....	5:35
5.....	7:04....	6:44	5.....	7:00....	4:54	5.....	7:02....	5:39
10.....	7:08....	6:37	10.....	7:04....	4:55	10.....	6:57....	5:44
15.....	7:12....	6:31	15.....	7:07....	4:56	15.....	6:52....	5:49
20.....	7:17....	6:24	20.....	7:10....	4:58	20.....	6:46....	5:54
25.....	7:21....	6:19	25.....	7:12....	5:01	25.....	6:40....	5:58

Source: www.timeanddate.com/worldclock/astronomy

Regulated Areas

National Parks and Monuments

Closed to all hunting (except as permitted).

National Wildlife Refuges

Closed to all hunting unless specified open under federal refuge regulations to hunting of particular species (page 9). U.S. Fish & Wildlife Service (USFWS) approved nontoxic shot is required for hunting on all national wildlife refuges.

Bureau of Reclamation (BOR)

Areas owned and operated by the Bureau of Reclamation are open, unless otherwise posted, to migratory game bird hunting during established seasons. All state and federal regulations apply, such as permits, shooting hours, bag limits, etc. Additional restrictions may apply for lands managed by BOR and New Mexico State Parks. For information contact the Bureau of Reclamation: (505) 462-3540 or New Mexico State Parks: 1-888-667-2757.

Native American Tribal Lands

Check with tribal officials about hunting on tribal lands.

McGregor Range in Unit 28

For access information, contact the Fort Bliss Security Office: (915) 741-5251.

Jornada Experimental Station

Jornada Experimental Station in Doña Ana County is closed to all public access without an escort.

Chihuahuan Desert Research Center

The Chihuahuan Desert Rangeland Research Center (College Ranch) is closed to public access. Telephone: (575) 646-2807 or visit online: <http://chihuahuansc.nmsu.edu/index.html>.

Rio Grande Gorge

Orilla Verde Recreation Area (BLM) is closed to hunting.

Middle Rio Grande Conservancy District

For more information and to obtain access along the Rio Grande telephone: (505) 864-7466.

Portions of the Rio Grande in Valencia County Closed

In the interest of public safety, areas posted along the Rio Grande in Valencia County are closed to migratory bird hunting. For more information regarding closures contact the NMDGF Northwest Office: (505) 222-4700.

Lower Rio Grande Valley

Please refer to the Lower Rio Grande Valley maps available online: www.wildlife.state.nm.us

New Mexico State Parks

Closed to all hunting except in designated areas. Contact state park superintendents for designated hunting areas and directions or telephone: 1-888-667-2757.

1. **Bluewater, Caballo, El Vado, Heron, Conchas, Ute, Elephant Butte and Sumner Lake State Parks:** Open for common snipe, sora, Virginia rail and waterfowl.
2. **Navajo Lake State Park:** Open for common snipe, sora, Virginia rail and waterfowl. Closed areas: Navajo Dam stilling basin which includes the area from the crest of the bluff above the north bank of the San Juan River to N.M. Hwy. 511 on the south side of the river for ¼ mile downstream from the dam; Cottonwood Campground and Day Use Area from the lower boundary of the Quality Waters to a fence ¼ mile downstream from the Cottonwood Day Use Area; Pine and Sims Mesa Recreation Area; and Navajo Reservoir Recreation Area south end.
3. **Rio Grande Valley State Park:** Closed to all hunting (no designated areas).

Areas Owned or Managed by the New Mexico State Game Commission

USFWS-approved nontoxic shot is required for hunting on all New Mexico State Game Commission owned or managed areas. Vehicle use is restricted to designated areas. Legal shooting hours are listed on page 4. New Mexico State Game Commission owned or managed areas **not specifically listed as open** below or on pages 14–15 **are closed to hunting** for species listed in this booklet.

1. The W.S. Huey Management Area is open for dove hunting on Monday, Wednesday and Saturday during established seasons.
2. Socorro-Escondida Wildlife Management Area is open for migratory game bird hunting during established seasons.
3. All Prairie Chicken Conservation Areas are open for dove hunting during established seasons.
4. Sandhill Prairie Conservation Area is open for dove during established seasons.
5. Bernardo Wildlife Management Area is open for September teal and other migratory game bird hunting. For area and species restrictions see pages 14–15.
6. La Joya Wildlife Management area is open for dove, September teal and other migratory game bird hunting. For area and species restrictions see pages 14–15.
7. Wildlife Management Areas open for dove and band-tailed pigeon hunting include: Sargent, Humphries, Rio Chama, Urraca, Colin Neblett, Water Canyon, Marquez and E.S. Barker.
8. Hammond Tract WMA and Retherford Tract WMA are open for waterfowl hunting during established seasons.

Private Property: Criminal Trespass

Entering private property without written permission from the landowner, manager or leasee may be adjudged criminal trespass under Chapter 30-14-1, NMSA 1978. Criminal trespass is a misdemeanor and punishable by fines up to \$1,000 and 364 days in jail. For complete descriptions of *what is* and *what is not* criminal trespass and the penalties involved, see page 37 of the "2017–18 New Mexico Hunting Rules and Information" available online at www.wildlife.state.nm.us and in print.

Local, county and federal access restrictions also may apply.

Migratory Game Birds

Migratory game birds include dove, band-tailed pigeon, sandhill crane, ducks, geese, coot, common moorhen, snipe, sora and Virginia rail.

Season dates and bag/possession limits are not final until published by the U.S. Fish & Wildlife Service in the "Federal Register" available online: www.federalregister.gov/agencies/fish-and-wildlife-service.

Migratory Game Bird Permits

Harvest Information Program Number (HIP)

The U.S. Fish & Wildlife Service requires all migratory game bird hunters to obtain a Harvest Information Program (HIP) number (page 3).

Free Regular-season Sandhill Crane Permit

Each regular-season (Eastern) sandhill crane hunter must possess the appropriate license(s) (page 3), plus a federal Sandhill Crane Hunting Permit (free). There is no limit on the number issued and no application deadline. Permits are available online: www.wildlife.state.nm.us at NMDGF offices and at all license vendors (One-dollar vendor fee may apply). A federal Duck Stamp is not required to hunt sandhill cranes.

Special Sandhill Crane Permits

Each special-season sandhill crane hunter must have the appropriate license(s) (page 3), plus a special-season permit issued by drawing (hunt codes and dates listed on page 11–12). Applications may be made online: www.wildlife.state.nm.us or telephone: 1-888-248-6866. Applications must be made by August 23 before 5 p.m. MDT. No more than four persons may apply per application, and no more than two persons per youth-only hunt application. Nonrefundable application fees are \$7 per resident and \$13 per nonresident. Additional information about hunt requirements will be given to successful applicants. A federal Duck Stamp is not required.

Light and Dark Goose Hunts

For information about the light goose hunt at the Bosque del Apache and the dark goose hunt at the Las Vegas National Wildlife Refuge, please contact refuges directly (page 9).

Free Band-tailed Pigeon Permit

A Band-tailed Pigeon Permit is required for hunters participating in band-tailed pigeon hunts (see page 10). There is no deadline or limit to the number of permits issued. Permits are available online: www.wildlife.state.nm.us at NMDGF offices and at all license vendors (One-dollar vendor fee may apply).

Free Light Goose Conservation Order Permit

A Light Goose Conservation Order Permit is required for hunters participating in the conservation order hunts Feb. 1–March 10, 2018 (see page 12). Permits are available online: www.wildlife.state.nm.us at NMDGF offices and at all license vendors (One-dollar vendor fee may apply). There is no deadline or limit to the number of permits issued. Participating hunters should report hunting efforts and harvests online: www.wildlife.state.nm.us.

Duck Stamp

Federal law requires all waterfowl hunters 16 years of age or older to carry a valid federal Migratory Bird Hunting & Conservation Stamp (Duck Stamp) which is signed in ink across the face (page 3).

Storage, Transportation and Shipment

One fully feathered wing must remain attached to all migratory game birds until transported to the hunter's home or storage facility. One fully feathered wing is not required for band-tailed pigeons or doves. No game of any kind may be placed or left at any location nor given to another person, unless that game is properly tagged by the hunter with a written statement. The statement must include the kind and number of game, the date and county where taken, the name and license number of the hunter and the date and place where the donation occurred. Tagging is required if the game is being transported by another person for the hunter or if the game has been left for cleaning, storage (this includes temporary storage), shipment or taxidermy services. Game may not be shipped, unless the package is marked on the outside with: 1, name and address of person shipping; and 2, name and address of the recipient.

Legal Sporting Arms

Migratory game birds may be taken with a shotgun fired from the shoulder, provided it is no larger than 10-gauge and incapable of holding more than three shells, or it is plugged with a one-piece filler that cannot be removed without disassembly which renders it incapable of holding more than three shells. Migratory game birds also may be taken with muzzle-loading shotgun firing shot, bow and arrows and crossbow and bolts.

Nontoxic Shot Mandatory

Persons hunting any waterfowl, coot, common moorhen, crane (draw hunt only), snipe, sora, or Virginia rail with shotguns (including muzzle-loading shotguns) must use and possess only USFWS-approved nontoxic shot. Shotgunners hunting any species of migratory game birds on all State Game Commission owned or managed areas must use and possess only USFWS-approved nontoxic shot. Nontoxic shot is not required for dove, band-tailed pigeon and the Eastern sandhill crane hunt outside of New Mexico State Game Commission owned or managed areas.

Nontoxic shot includes: bismuth-tin, iron (steel), copper-clad iron, iron-tungsten, iron-tungsten-nickel, tungsten-bronze, tungsten-iron-copper-nickel, tungsten matrix, tungsten polymer, tungsten-tin-iron, tungsten-tin-bismuth, tungsten-tin-iron-nickel and tungsten-iron-polymer.

Wanton Waste Is Illegal

Anyone who takes game birds must transport the edible portions of the meat from the field for human consumption.

Closed Seasons

No person shall take migratory game birds except during the hours open to shooting or falconry as prescribed.

Legal Methods

It is legal to use artificial decoys, blinds and dogs. It is illegal to shoot at any protected species from within a motor vehicle, power boat, sailboat or aircraft. Migratory birds may be taken from a motor-driven boat (or other craft with attached motor) or sailboat, provided that craft is resting at anchor, fastened within or alongside a fixed hunting blind or used solely as a means for retrieving killed birds.

Operation Game Thief (OGT)

Operation Game Thief is a silent witness program funded by donations from individuals and organizations, not from taxes or license fees. OGT rewards range from \$50-\$750 and since 2005 have totaled more than \$80,875. If you have information about illegally taken wildlife or fish, contact your local game warden or telephone the OGT hotline.

OGT Hotline: 1-800-432-4263 (24 hours, 7 days a week)
or **www.wildlife.state.nm.us/ogt**



Federal Regulations

In addition to the New Mexico regulations set forth in this booklet, the following federal regulations apply to taking, possessing, transporting and storing migratory game birds (ducks, geese, coots, common moorhens, snipes, soras, rails, doves, band-tailed pigeons and sandhill cranes). Persons cited for violating federal regulations will be required to appear in federal court. The complete federal regulations (50 CFR-Part 20) is available online: www.fws.gov/permits/ltr/ltr.html

Illegal Methods

No person shall take migratory birds:

1. From a sink box (a low floating device that has a depression affording the hunter a means of concealment beneath the surface of the water).
2. From or with the aid or use of a car or other motor-driven land conveyance or from or with the aid of any aircraft or drone.
3. By baiting (placing or directing placement of feed such as corn, wheat, salt, etc. for the purpose of causing, inducing or attempting to take any migratory game bird). Hunters should be aware a baited area is considered to be baited for 10 days after the removal of the bait.

Importation of Harvested Migratory Birds

During any one-week beginning on Sunday, no person shall import more than:

1. 25 doves and 10 pigeons from any foreign country.
2. 10 ducks and 5 geese from any foreign country, except Canada and Mexico.
3. The Canadian and Mexican export limits for doves and waterfowl, which vary for different foreign provinces and states.

In addition, one fully feathered wing must remain attached to all harvested migratory game birds being transported or shipped between a port of entry and one's home or taxidermist. No person shall import harvested migratory game birds belonging to another person.

Migratory Game Bird Hunting on National Wildlife Refuges (NWR)

All state and federal regulations apply, including licenses, permits, method of take, bag limit, etc. Only USFWS-approved nontoxic shot may be used and possessed on refuges. Sporting arms must be unloaded and cased when transported.

Bosque del Apache NWR: The Bosque del Apache conducts Special Permit Light Goose Hunts and may allow limited hunting for dove in specific areas. For current information, maps and applications, visit: www.fws.gov/refuge/bosque_del_apache/ or telephone: (575) 835-1828.

Las Vegas NWR: The Las Vegas National Wildlife Refuge conducts Special Permit Canada Goose Hunts and limited dove hunting. For current information, maps and applications visit: www.fws.gov/refuge/las_vegas/ or telephone: (505) 425-3581.

Bitter Lake NWR: The Bitter Lake National Wildlife Refuge has limited hunting for ducks, geese, coot, sandhill crane and dove. For information, maps and applications visit: www.fws.gov/refuge/bitter_lake/ or telephone: (575) 622-6755.

Sevilleta NWR: Due to restoration and enhancement efforts, hunting on Sevilleta National Wildlife Refuge will not occur in 2017 - 2018. For more information, visit: www.fws.gov/refuge/sevilleta or telephone: (505) 864-4021.

Report All Banded Birds!

NMDGF requests all banded birds harvested be reported online: www.reportband.gov.

Eurasian Collared Dove

Eurasian collared-doves are Upland Game per rule (19.31.5 NMAC). Seasons, hunt areas, bag and possession limits, legal sporting arms types and transport information are available in the "2017–18 New Mexico Hunting Rules and Information" available online www.wildlife.state.nm.us and in print (pages 129–133).

Dove and Band-tailed Pigeon Seasons

Mourning and White-winged Dove

North Zone: North of I-40 from the New Mexico/Arizona border to U.S. Hwy. 54 at Tucumcari; U.S. Hwy. 54 from Tucumcari to the New Mexico/Texas border. **South Zone:** South of I-40 from the New Mexico/Arizona border to U.S. Hwy. 54 at Tucumcari; U.S. Hwy. 54 from Tucumcari to the New Mexico/Texas border.

Hunt Area	Season Dates	Bag / Possession
North Zone	Sept. 1–Nov. 29	15 singly or aggregate / 45
South Zone	Sept. 1–Oct. 29 and Dec. 2–Jan. 1 '18.	15 singly or aggregate / 45

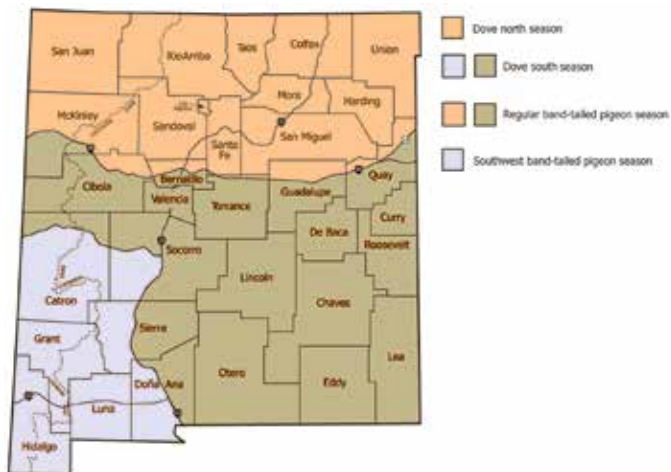
Band-tailed Pigeon

A free Band-tailed Pigeon Permit is required (page 7).

Southwest Season: South of U.S. Hwy. 60 and west of I-25. **Regular Season:** Remainder of the state outside the Southwest Season boundary.

Hunt Area	Season Dates	Bag / Possession
Southwest Season	Oct. 1–14	2 per day / 6 in possession
Regular Season	Sept. 1–14	2 per day / 6 in possession

Dove and Band-tailed Pigeon Hunt Areas



Sandhill Crane Seasons

Applying for Sandhill Crane Hunts

Applications may be made online or toll-free. The application deadline is August 23 before 5 p.m. MDT. No more than four persons may apply per application and no more than two persons per youth-only hunt application. A federal Duck Stamp is not required to hunt sandhill cranes. Cranes are often found on private property. To access private property, hunters must obtain and possess prior written permission.

Eastern Hunt (Eastern)

Chaves, Curry, De Baca, Eddy, Lea, Quay and Roosevelt counties. All Eastern Season sandhill crane hunters must possess an appropriate license (page 3), plus a federal Regular Season Sandhill Crane Permit (free). There is no limit of permits issued nor deadline to apply. Permits are available online and at all license vendors. Eastern hunt dates are October 28–January 28, 2018.

Southwest Hunt (SW)

Parts of Sierra, Doña Ana, Luna, Grant and Hidalgo counties: Bounded on the south by the New Mexico/Mexico border; Bounded on the west by the New Mexico / Arizona border north to I-10; Bounded on the north by I-10 east to US 180, north to NM 26, east to NM 27, north to NM 152 and east to I- 25; Bounded on the east by I-25 south to I-10, west to the Luna county line and south to the New Mexico/Mexico border.

A maximum of 70 permits are issued for the SCR-0-108 hunt and 60 permits for the SCR-0-109 hunt. The Harvest Questionnaire / Bill Measurement Card must be returned to NMDGF no later than five days after hunting. **Do not report hunt results online.**

Estancia Valley Hunt (EV)

Portions of Bernalillo, Santa Fe and Torrance counties: Bounded on the west by NM 55 starting at Mountainair and north to NM 337, north to NM 14 and north to I-25; Bounded on the north by I-25 east to US 285; Bounded on the east by US 285 south to US 60; Bounded on the south by US 60 from US 285 west to NM 55 at Mountainair.

A maximum of 65 permits are issued by drawing for the SCR-0-101 hunt. Hunters who draw Special Estancia Valley Crane Permits must: 1. Check all cranes harvested at the designated check station (below); and 2. Return the Harvest Questionnaire to NMDGF no later than five days after hunting. **Do not report hunt results online.**

Middle Rio Grande Valley (MRGV) Hunts and Resident Youth-only Hunt

Valencia and Socorro counties. A maximum of 75 permits are issued by drawing for the SCR-0-102 hunt, 60 permits each for the SCR-0-103, SCR-0-104, SCR-0-105 and SCR-0-106 hunts.

A maximum of 24 permits will be available for the SCR-0-107 resident youth-only hunt. Hunters will be assigned to hunt on either Bernardo or Casa Colorado WMAs.

Hunters who draw Special MRGV Crane Permits must: 1. Check all cranes harvested at the designated check station (below); and 2. Return the Harvest Questionnaire to NMDGF no later than five days after hunting. **Do not report hunt results online.**

Harvest Questionnaires and hunt letters are available online:

<http://www.wildlife.state.nm.us/hunting/information-by-animal/migratory-bird/>.

Check Stations: Estancia and Middle Rio Grande Valleys

Sandhill crane check stations dates in the Middle Rio Grande Valley and Estancia Valley.

Middle Rio Grande Valley Nov. 11–12; Nov. 25–26; Dec. 16–17; Jan. 6–7; Jan. 13–14

Estancia Valley Oct. 28–Oct. 31; Nov. 2–5

Hunt Area	Hunt Code	Season Dates	Bag / Possession	
Eastern Hunt	N/A	Oct. 28– Jan. 28, '18 . .	3 per day / 6 in possession	
Estancia Valley Hunt	SCR-0-101	Oct. 28–31	3 per day / 6 in possession	
		Nov. 2–5	3 per day / 6 in possession	
MRGV Hunts. . . .	SCR-0-102	Nov. 11–12	3 per day / 6 in possession	
		SCR-0-103	Nov. 25–26	3 per day / 6 in possession
		SCR-0-104	Dec. 16–17	3 per day / 6 in possession
		SCR-0-105	Jan. 6–7, '18	3 per day / 6 in possession
		SCR-0-106	Jan. 13–14, '18	3 per day / 6 in possession
MRGV Youth-only . .	SCR-0-107	Nov. 4	3 total	
(residents only)	Southwestern	SCR-0-108	Oct. 28–Nov. 5	3 per day / 6 in possession
			SCR-0-109	Jan. 6–7, '18

Central Flyway Seasons

Possession limits are 3 times the daily bag limit for all species, unless otherwise noted.

North Zone (East of the Continental Divide and north of I-40 and U.S. Hwy. 54 at Tucumcari)

Species	Season Dates	Bag / Possession
Ducks	Oct. 14–Jan. 17, '18 . .	.6 ducks singly or in aggregate ⁽¹⁾ / 3 times daily bag
⁽¹⁾ Aggregate may consist of no more than: 5 mallards, only 2 of which may be female (Mexican-like ducks are considered part of the mallard bag limit); 3 scaup; 3 wood ducks; 2 redhead; 2 hooded merganser; 1 pintail; and 2 canvasback.		
American Coot	Oct. 14–Jan. 17, '18 . .	15 daily / 45 in possession

South Zone (East of the Continental Divide and south of I-40 and U.S. Hwy. 54 at Tucumcari)

Species	Season Dates	Bag / Possession
Ducks and American Coot	Oct. 25–Jan. 28 '18 . . .	Same as North Zone / 3 times daily bag

North and South Zones (See above North Zone and South Zone boundary descriptions)

Species	Season Dates	Bag / Possession
September teal	Sept. 16–246 singly or in aggregate / 18 in possession (blue-winged, cinnamon, green-winged teal)
Common Moorhen	Sept. 16–Nov. 24	1 daily / 3 in possession
Sora and Virginia Rail	Sept. 16–Nov. 24	10 singly or in aggregate / 20 in possession
Common Snipe	Oct. 14–Jan. 28 '18 . . .	8 daily / 24 in possession
Dark Goose ⁽²⁾	Oct. 14–Jan. 28 '18 . . .	5 daily / 15 in possession (Canada and white-fronted goose)
MRGV Dark Goose ⁽³⁾	Dec. 23–Jan. 16, '18 . . .	2 per day / 2 per season (Canada and white-fronted goose)

⁽²⁾ MRGV (Valencia, Socorro and Sierra counties) is closed to dark goose hunting in the regular season.

⁽³⁾ MRGV includes Valencia, Socorro and Sierra counties.

Light Goose Oct. 14–Jan. 28 '18 . . . 50 daily / No possession limit (snow and Ross's goose)

Light Goose Conservation Order ⁽⁴⁾ (snow and Ross's goose) Feb. 1–Mar. 10 '18 . . . No bag limit / No possession limit

⁽⁴⁾ Free permit required (page 7). Approved tools include electronic calls and unplugged shotguns. Shooting until 1/2 hour after sunset, except on Wildlife Management Areas (WMAs).

Central Flyway



Pacific Flyway



Pacific Flyway Seasons

Possession limits are 3 times the daily bag limit for all species, unless otherwise noted.

North Zone (West of the Continental Divide and north of I-40)

Species	Season Dates	Bag / Possession
Goose	Sept. 23–Oct. 8 Oct. 30–Jan. 28, '18	4 Canada and brant / 12 in possession 10 white-fronted/ 30 in possession 20 light / 60 in possession

South Zone (West of the Continental Divide and south of I-40)

Species	Season Dates	Bag / Possession
Goose	Oct. 14–Jan. 28, '18.	4 Canada and brant / 12 in possession 10 white-fronted/ 30 in possession 20 light / 60 in possession

North and South Zones (See above North Zone and South Zone boundary descriptions)

Species	Season Dates	Bag / Possession
Duck	Oct. 16–Jan. 28, '18	7 ducks in aggregate ⁽¹⁾ / 3 times daily bag
⁽¹⁾ Aggregate may include no more than 2 female mallards, 2 redheads, 1 pintail, 2 canvasback.		
Scaup	Oct. 16–Jan. 9, '18	3 daily ⁽²⁾ / 9 possession.
⁽²⁾ May be part of the aggregate bag for duck.		
American Coot and Common Moorhen	Oct. 16–Jan. 28, '18.	25 singly or in aggregate / 75 in possession
Common Snipe	Oct. 16–Jan. 30, '18.	8 daily / 24 in possession
Sora and Virginia Rail	Sept. 16–Nov. 24	25 singly or in aggregate / 75 in possession

Game Commission Owned or Managed Areas

State Game Commission owned or managed areas listed below are open to migratory game bird hunting. No hunting is allowed outside of open seasons or for species not listed. No camping is allowed, and vehicles are restricted to designated areas. Shooting hours are listed on page 4.

Days Open to Migratory Game Bird Hunting (• = Days Open)

Wildlife Management Areas	Species	Sun.	Mon.	Tue.	Wed.	Thr.	Fri.	Sat.
W.S. Huey	Dove	•	•	•	•	•	•	•
Bernardo (South)	September teal	•	•	•	•	•	•	•
South of U.S. 60 in Bernardo will be open for September teal and youth-waterfowl days.								
Bernardo (Unit D)	Light Goose C.O.		•		•			•
Open only during the Light Goose Conservation Order.								
Bernardo (The Quagmire)	Group I	•		•		•		
Bernardo (Ponds)	Group I		•		•			•
Bernardo (Youth Unit)	Group I		•		•			•
Wagon Mound and Charette Lake	Group II		•		•			•
La Joya and Wagon Mound.	September teal	•	•	•	•	•	•	•
La Joya (north portion)	Group I		•		•			•
That portion north of the main east/west entrance road and west of the railroad tracks.								
La Joya (south portion)	Group I	•		•		•		
That portion south of the main east/west entrance road and west of the railroad tracks.								
La Joya (east of railroad tracks)	Dove, Group I	•	•	•	•	•	•	•
Jackson Lake (west of NM 170).	Group II		•		•			•
Tucumcari	September teal	•	•	•	•	•	•	•
Tucumcari	Group II	•			•			•
McAllister Lake.	Group III		•		•			•
McAllister Lake.	Dove, September teal	•	•	•	•	•	•	•
All Prairie Chicken Areas,	Dove	•	•	•	•	•	•	•
Sandhills Prairie Conservation Area, Big Hatcher Special Management Area								
Socorro-Escondida	All migratory birds	•	•	•	•	•	•	•
Sargent, Humphries,	Dove, Band-tailed pigeon	•	•	•	•	•	•	•
Rio Chama, Urraca, Colin Neblett, Water Canyon, Marquez and E.S. Barker								
Sandia Ranger District	All migratory birds (archery hunting only)	•	•	•	•	•	•	•
Retherford Tract	Group II	•	•	•	•	•	•	•
Hammond Tract	Group II	•	•	•	•	•	•	•

Days Open to Migratory Game Bird Hunting—continued.

- Group I: Includes ducks, light geese, dark geese (as part of the MRGV dark goose season), Virginia rail, sora, common moorhen, American coot and common snipe.
- Group II: Includes ducks, all geese, Virginia rail, sora, common moorhen, American coot and common snipe.
- Group III: Includes ducks, light geese, Virginia rail, sora, common moorhen, American coot, common snipe and doves.

Youth Waterfowl Seasons

Federal Youth Waterfowl Days (Residents and Nonresidents)

Hunt Area	Zone	Season Dates	Bag / Possession
Central Flyway	North	Sept. 30–Oct. 1.	See pages 12–13
	South:	Oct. 7–8	See pages 12–13
Pacific Flyway	North and South	Oct. 7–8	See pages 12–13

No application is required. Youth hunters must be 17 years of age or younger and fully licensed (a special-hunt permit is not required). Hunters 16 years of age and older must possess a federal Duck Stamp. An adult 18 years of age or older must accompany the youth in the field. The adult may not hunt ducks, but may if properly licensed participate in other seasons open during Youth Waterfowl Days.

The youth hunter may take only ducks, coots and moorhens. No sandhill cranes, geese or other waterfowl may be taken, unless it is open season for these species. Bag and possession limits are the same as the regular seasons.

Legal shooting hours on Wildlife Management Areas for migratory game birds are ½ hour before sunrise to 1 p.m., unless otherwise noted.

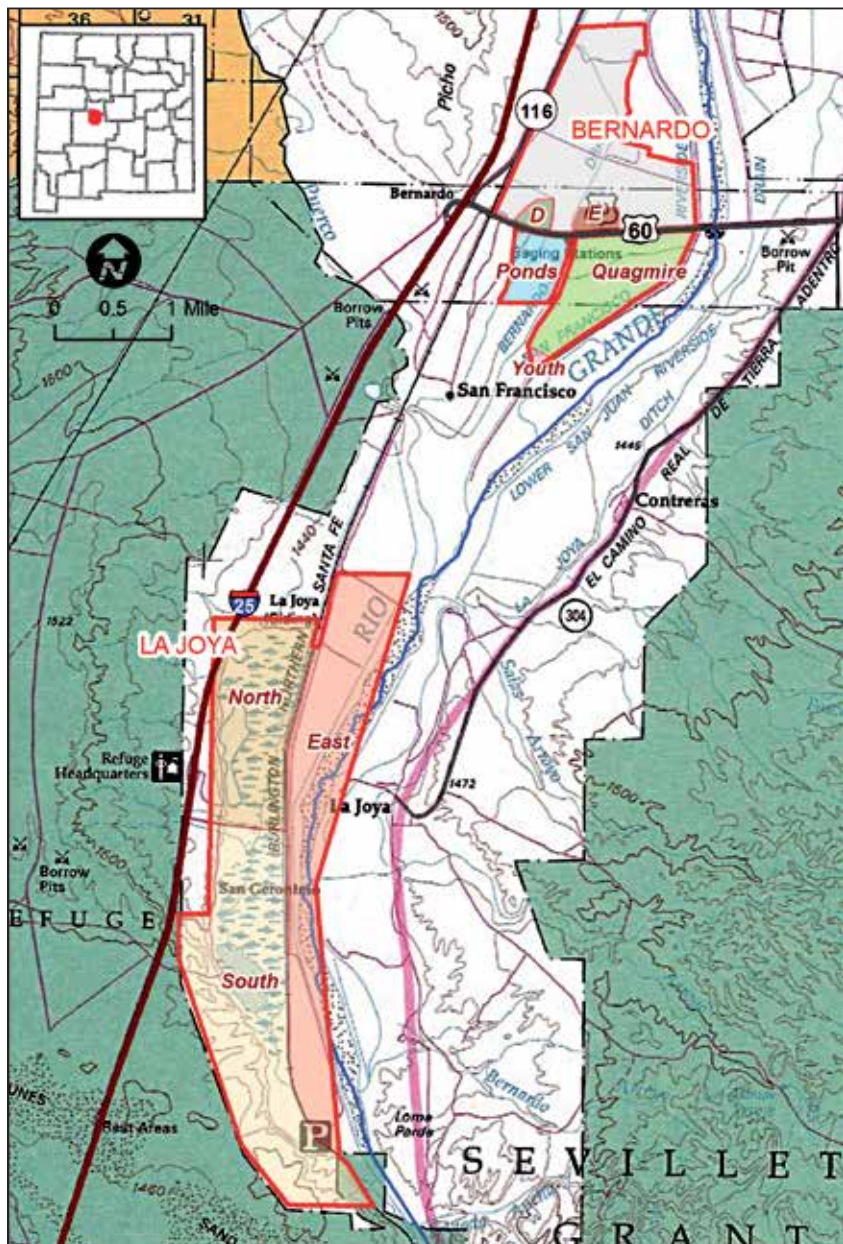
WMAs open during Youth Waterfowl Days include Bernardo, La Joya, Wagon Mound, Charette Lake, McAllister Lake and Tucumcari.

Youth Waterfowl Hunts at Bernardo (Residents Only)

Bernardo Youth Hunt Unit is open for waterfowl hunts for resident youth and their guests. Blind selection will be available first-come, first-served from ½ hour before sunrise to 1 p.m. Youth hunters must be accompanied by an 18 years of age or older supervising adult. Supervising adults may not hunt, but must be legally licensed. No more than four people per blind are allowed—at least half of whom must be youth hunters.

Bernardo and La Joya Wildlife Management Areas

Maps of the Bernardo and La Joya WMAs are available online: www.wildlife.state.nm.us.



Bernardo Wildlife Management Area

Bernardo Ponds, Quagmire and Youth Hunt Unit



Title VI Funding: Certain programs of the New Mexico Department of Game and Fish receive federal funds from the U.S. Department of the Interior. These programs are therefore subject to requirements of the New Mexico Human Rights Act and Title VI of the 1964 Civil Rights Act, which prohibit discrimination because of ancestry, sex, race, color, religion, national origin, age or physical or mental handicap. If you believe you have been discriminated against in any program, activity or facility, please send a detailed description of the incident by certified mail to the New Mexico Department of Game and Fish. If you desire further information on Title VI, write: New Mexico Department of Game and Fish, ADA Coordinator, P.O. Box 25112, Santa Fe, NM 87504 or Office of Equal Opportunity, U.S. Dept. of the Interior, Office of the Secretary, Washington, DC 20240. The Department of Game and Fish will schedule public meetings and operate facilities that are accessible to physically impaired persons. Reasonable accommodations will be made for other impairments, including hearing and sight. If special aids are required, call (505) 476-8027 or write to P.O. Box 25112, Santa Fe, NM 87504 at least three working days prior to the meeting date. To initiate a complaint, write to the U.S. Fish and Wildlife Service, Division of Federal Assistance, 4401 Fairfax Drive, Mail Stop: MBSP-4020, Arlington, Virginia 22203.

Fondos de Titulo VI: Ciertos programas del New Mexico Department of Game and Fish reciben fondos federales del U.S. Department of the Interior. Estos programas son subyugados a requisitos de la ley de New Mexico Human Rights Act and Title VI of the 1964 Civil Rights Act, que prohíben la discriminación por razones de ascendencia, sexo, raza, color, religión origen nacional, edad o impedimento físico o mental. Si usted cree que ha sufrido discriminación en cualquier programa, actividad o comodidades, por favor envíe por correo certificado una descripción detallada al Department of Game and Fish. Si desea mas información sobre Titulo VI, por favor escriba a: Department of Game and Fish, ADA Coordinator, P.O. Box 25112, Santa Fe, NM 87504 or Office of Equal Opportunity, U.S. Dept. of the Interior, Office of the Secretary, Washington, DC 20240. Al programar sus reuniones públicas, el Department of Game and Fish operará en facilidades que proveen acceso para personas con incapacidades físicas. Las personas con otras incapacidades, inclusive del oído y de la vista, recibirán acceso razonable a las reuniones. Si usted necesita algún auxiliar o ayuda especial, por favor llame al número (505) 476-8027 o escriba a P.O. Box 25112, Santa Fe, NM 87504, por lo menos tres días antes de la reunión. Para iniciar una queja, escriba a U.S. Fish and Wildlife Service, Division of Federal Assistance, 4401 Fairfax Drive, Mail Stop: MBSP-4020, Arlington, Virginia 22203.

Falconry Seasons

Falconry Upland Game Seasons

Refer to the "2017–18 New Mexico Hunting Rules & Info," available online and in-print (page 130).

Falconry Migratory Game Bird Seasons

All Wildlife Management Areas shall be open to falconry waterfowl hunting each day of the established falconry season. The portion of Jackson Lake east of N.M. Hwy. 170 shall be open to falconry-only migratory game bird hunting during the established seasons.

Area	Date	Bag / Possession
------	------	------------------

Dove

North Zone . . .	Sept. 1–Dec. 43 singly or in aggregate / 9 in possession
	Dec. 23–Jan. 3 '183 singly or in aggregate / 9 in possession

South Zone	Sept. 1–Nov. 63 singly or in aggregate / 9 in possession
	Nov. 23–Jan. 1 '183 singly or in aggregate / 9 in possession

Note: Eurasian collared doves are an upland game species per rule (19.31.5 NMAC). See page 10.

Band-tailed Pigeon

Central Flyway and Pacific Flyway

North Zone . . .	Sept. 1–142 singly or in aggregate / 6 in possession
South Zone . . .	Oct. 1–14.2 singly or in aggregate / 6 in possession

Sandhill Crane

Eastern⁽¹⁾ Oct. 14–Jan. 28, '18 . . .3 singly or in aggregate / 6 in possession

Estancia Valley⁽²⁾. Oct. 28–Dec. 263 singly or in aggregate / 6 in possession

⁽¹⁾ Sandhill Crane Permit (free) in possession is required while hunting.

⁽²⁾ Falconers are requested to report hunting efforts and harvests online.

Duck and American Coot

Central Flyway

North Zone . . .	Sept. 16–24.3 singly or in aggregate / 9 in possession
	Oct. 14–Jan. 17, '183 singly or in aggregate / 9 in possession

South Zone . . .	Sept. 16–24.3 singly or in aggregate / 9 in possession
	Oct. 25–Jan. 28, '183 singly or in aggregate / 9 in possession

Pacific Flyway

All Zones Oct. 14–Jan. 28, '18 . . .3 singly or in aggregate / 9 in possession

Scaup

Pacific Flyways

All Zones Oct. 16–Jan. 9, '18 . . .3 singly or in aggregate / 9 in possession

Common Snipe

Central

All Zones Oct. 14–Jan. 28, '18 . . .3 singly or in aggregate / 9 in possession

Pacific Flyway

All Zones Oct. 16–Jan. 30, '18 . . .3 singly or in aggregate / 9 in possession

Common Moorhen

Central Flyway

All Zones Sept. 16–Dec. 31 3 singly or in aggregate / 9 in possession

Pacific Flyway

All Zones Oct. 16–Jan. 28, '18 . . . 3 singly or in aggregate / 9 in possession

⁽³⁾Youth Waterfowl Days

Sora and Virginia Rail

Central Flyway

All Zones Sept. 16–Dec. 31 3 singly or in aggregate / 9 in possession

Pacific Flyway

All Zones Sept. 16–Nov. 24 3 singly or in aggregate / 9 in possession

Light Goose

Central Flyway

All Zones Oct. 14–Jan. 28, '18 . . . 3 singly or in aggregate / 9 in possession

Pacific Flyway

North Zone . . . Sept. 23–Oct. 8 3 singly or in aggregate / 9 in possession

Oct. 30–Jan. 28, '18 . . . 3 singly or in aggregate / 9 in possession

South Zone . . . Oct. 14–Jan. 28, '18 . . . 3 singly or in aggregate / 9 in possession

Dark Goose

Central Flyway

MRGV Dec. 23–Jan. 16, '18 . . . 3 singly or in aggregate / 9 in possession

All Zones Oct. 14–Jan. 28, '18 . . . 3 singly or in aggregate / 9 in possession

(excluding MRGV)

Pacific Flyway

North Zone . . . Sept. 23–Oct. 8 3 singly or in aggregate / 9 in possession

Oct. 30–Jan. 28, '18 . . . 3 singly or in aggregate / 9 in possession

South Zone . . . Oct. 14–Jan. 28, '18 . . . 3 singly or in aggregate / 9 in possession



New Mexico Department of Game and Fish

Donation Certificate

Use this certificate if you give game birds or parts to a person or organization.

I, _____ on this day: ___/___/___,
(Full name of license holder. Please print.) (Date of transaction)

located at: _____,
(Place of transaction)

hereby convey to: _____ the following game animal(s) or parts:
(Person or organization receiving donation)

taken under my valid license number: _____

and taken on: ___/___/___.

Donor: _____ Recipient: _____
(Signature of license holder) (Signature of recipient)

By signing we understand and acknowledge to postdate, predate or otherwise falsify a Donation Certificate is unlawful.



Will your child remember the experience of a lifetime or another video game?

The Mentored-Youth Program enables first time hunters under 18 years of age to hunt under the supervision of an adult mentor, purchase a Game-hunting License and apply for draw hunts. To learn how to become a Mentored-Youth Hunter call (505) 222-4731 or visit us online.

www.wildlife.state.nm.us/education



"2017-18 New Mexico Migratory Bird Hunting Supplement" is an addendum to the "2017-18 New Mexico Hunting Rules & Info" and is published © 2017 by the New Mexico Department of Game and Fish / Information and Education Division, One Wildlife

Way, Santa Fe, NM 87507.