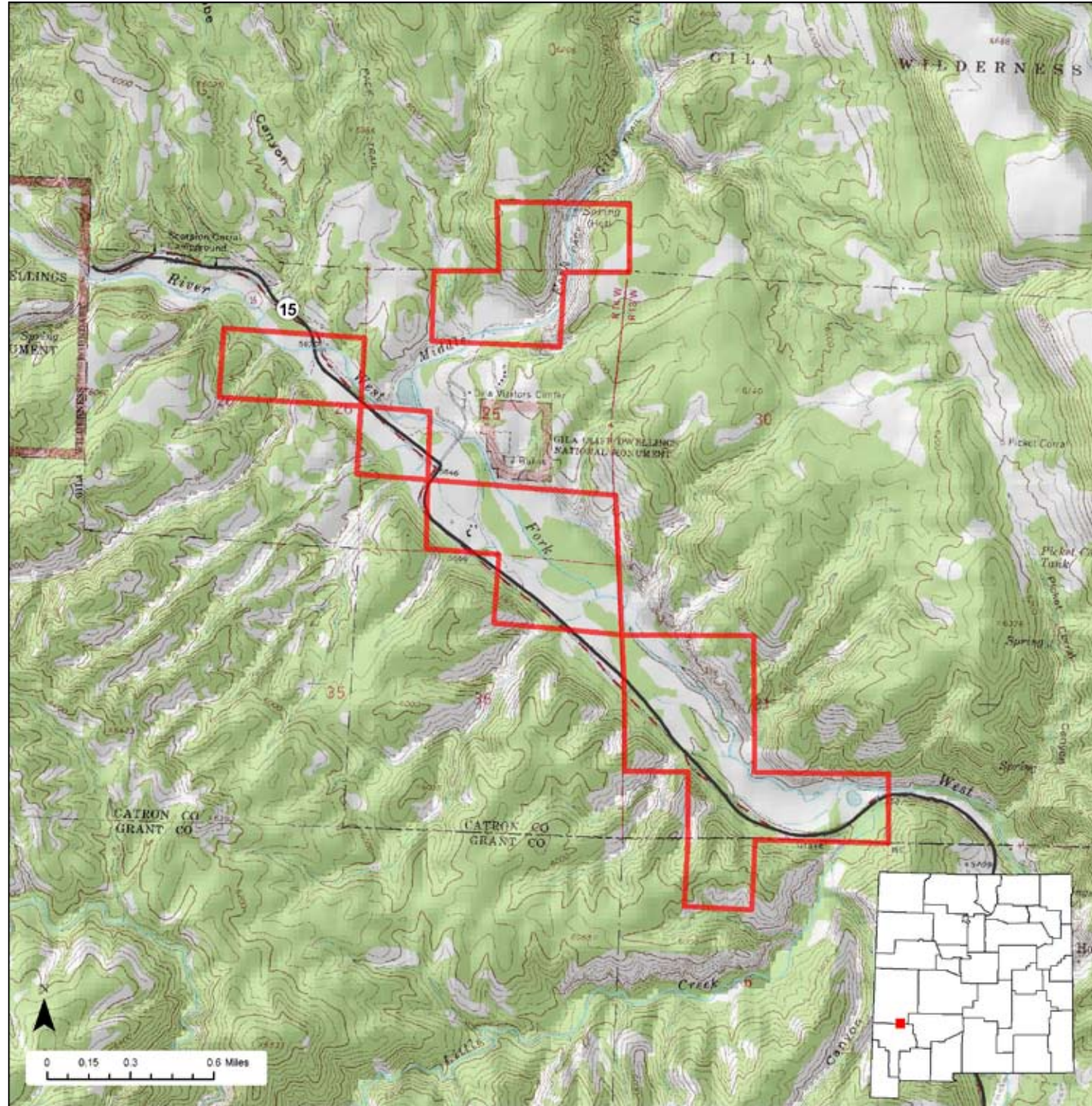




# Heart Bar Wildlife Area



**Location:** The Heart Bar Wildlife Area is located 36 miles north of Silver City.

**Total Acreage:** 797 acres.

**Purchase:** The Heart Bar Wildlife Area was purchased in 1951 to provide improved wildlife habitat.

**Description:** The area surrounds a portion of the Gila River with cottonwood and willow bottoms and evergreen forests in the higher elevations.

**For More information:** More information about hunting, fishing and other activities, may be found on the Department's website: [www.wildlife.state.nm.us/](http://www.wildlife.state.nm.us/).

GAIN Activities	What to See, Do, and Learn
<ul style="list-style-type: none"> <li>✓ Wildlife Viewing</li> <li>✓ Photographing</li> </ul>	<p><b>Wildlife Viewing</b>-Wildlife watchers may see various wildlife species. Good binoculars are important. The best time to view wildlife is at dawn or dusk.</p> <p><b>Photographing</b>-The best time to photograph wildlife is at dawn or dusk. A telephoto lens is important.</p>
<p><b>Access</b></p> <ul style="list-style-type: none"> <li>✓ Hiking</li> <li>✓ Bicycling</li> <li>✓ Horseback Riding</li> </ul>	<p><b>Hiking</b>-Hiking is the best way to see wildlife at the Heart Bar Wildlife Area or other wildlife management areas.</p> <p><b>Bicycling</b>-Allowed only on established roads.</p> <p><b>Horseback Riding</b>-Allowed.</p>
<p><b>Hunting and Fishing</b></p> <ul style="list-style-type: none"> <li>✓ No Hunting</li> <li>✓ Fishing</li> </ul>	<p><b>Camping</b>-Allowed year-round in designated areas.</p> <p><b>Hunting</b>-No hunting opportunities.</p> <p><b>Fishing</b>-Allowed year-round.</p>
<p><b>Closures</b></p> <ul style="list-style-type: none"> <li>✓ Yes</li> </ul>	<p><b>Closures</b>-The north bank of the West Fork of the Gila River is closed to all access from March 1-August 31.</p>
<p><b>Facilities</b></p> <ul style="list-style-type: none"> <li>✓ Rest rooms</li> <li>✓ Primitive camping</li> <li>✓ No drinking water</li> </ul>	<p><b>Facilities</b>-The Heart Bar Wildlife Area has rest rooms and primitive camping but no drinking water.</p>
<p><b>Fees</b></p> <ul style="list-style-type: none"> <li>✓ Yes</li> </ul>	<p><b>Fees</b>-Anglers must have appropriate licenses and permits. Wildlife viewers, photographers, hikers, bicyclists, and horseback riders must have a current GAIN Permit and a Habitat Management and Access Validation.</p>
<p><b>Motorized Vehicles</b></p> <ul style="list-style-type: none"> <li>✓ Not allowed beyond the roadway and parking area</li> </ul>	<p><b>Motorized Vehicles</b>-Not allowed beyond roadway and parking area.</p>
<p><b>For more information on hunting and fishing rules and seasons, please read current hunting or fishing Rules and Information Booklets available on the Department's website, at Department offices, or from license vendors state-wide.</b></p>	