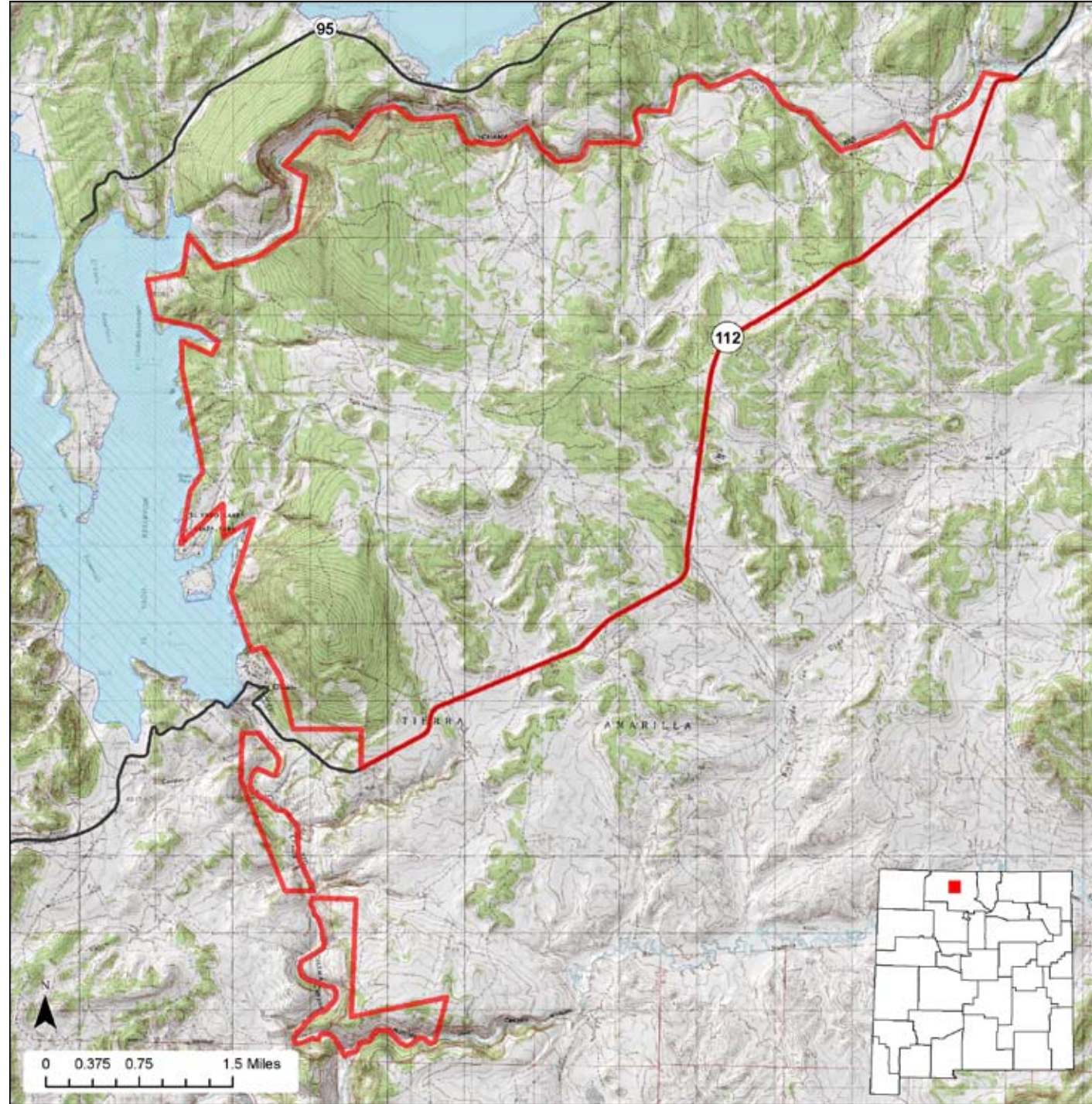




Rio Chama Wildlife Areas



Location: The Rio Chama Wildlife Area is located about 14 miles south of Chama bordering El Vado Reservoir and the Chama River.

Total Acreage: 13,239 acres.

Purchase: The Rio Chama was purchased beginning in 1953 to provide hunting and fishing access.

Description: The Rio Chama offers access to 12.5 miles of the Chama River and 4.5 miles of El Vado reservoir shoreline. There are pinon covered ridges bounding the deep Chama Canyon.

For More information: More information about hunting, fishing and other activities, may be found on the Department's website: www.wildlife.state.nm.us/.

| GAIN Activities | What to See, Do, and Learn |
|---|--|
| <ul style="list-style-type: none"> ✓ Wildlife Viewing ✓ Photographing | <p>Wildlife Viewing-Wildlife watchers may see various wildlife species. Good binoculars are important. The best time to view wildlife is at dawn or dusk. Allowed Memorial Day weekend-November 15.</p> |
| <p style="text-align: center;">Access</p> <ul style="list-style-type: none"> ✓ Hiking ✓ Bicycling ✓ Horseback Riding | <p>Photographing-The best time to photograph wildlife is at dawn or dusk. A telephoto lens is important. Allowed Memorial Day weekend-November 15.</p> <p>Hiking-Hiking is the best way to see wildlife at the Rio Chama Wildlife Area or other wildlife management areas. Allowed Memorial Day weekend-November 15.</p> |
| <p style="text-align: center;">Hunting and Fishing</p> <ul style="list-style-type: none"> ✓ Hunting ✓ Fishing | <p>Bicycling-Allowed only on established roads. Allowed Memorial Day weekend-November 15.</p> <p>Horseback Riding-Allowed Memorial Day weekend-November 15. Licensed hunters may ride during their hunt.</p> |
| <p style="text-align: center;">Closures</p> <ul style="list-style-type: none"> ✓ Yes | <p>Camping-Allowed in designated areas Memorial Day weekend-November 15. Licensed hunters may camp during their hunt.</p> |
| <p style="text-align: center;">Facilities</p> <ul style="list-style-type: none"> ✓ No rest rooms ✓ Primitive camping ✓ No drinking water | <p>Fishing-Year-round. Some seasonal access restrictions apply.</p> <p>Hunting-Hunting is allowed for deer, elk, turkey, teal, and small game during open seasons to hunters with valid licenses and permits.</p> |
| <p style="text-align: center;">Fees</p> <ul style="list-style-type: none"> ✓ Yes | <p>Closures-GAIN activities and most access are not allowed November 15 until Memorial Day weekend and GAIN activities and most access are not allowed during established deer and elk hunts.</p> |
| <p style="text-align: center;">Motorized Vehicles</p> <ul style="list-style-type: none"> ✓ Not allowed beyond the roadway and parking area <div style="border: 1px solid black; padding: 5px; margin-top: 10px;"> <p>For more information on hunting and fishing rules and seasons, please read current hunting or fishing Rules and Information Booklets available on the Department's website, at Department offices, or from license vendors state-wide.</p> </div> | <p>Facilities-The Rio Chama Wildlife Area has primitive camping but no rest rooms or drinking water.</p> <p>Fees-Hunters and anglers must have appropriate licenses and permits. Wildlife viewers, photographers, hikers, bicyclists, and horseback riders must have a current GAIN Permit and a Habitat Management and Access Validation.</p> <p>Motorized Vehicles-Not allowed beyond roadway and parking area.</p> |