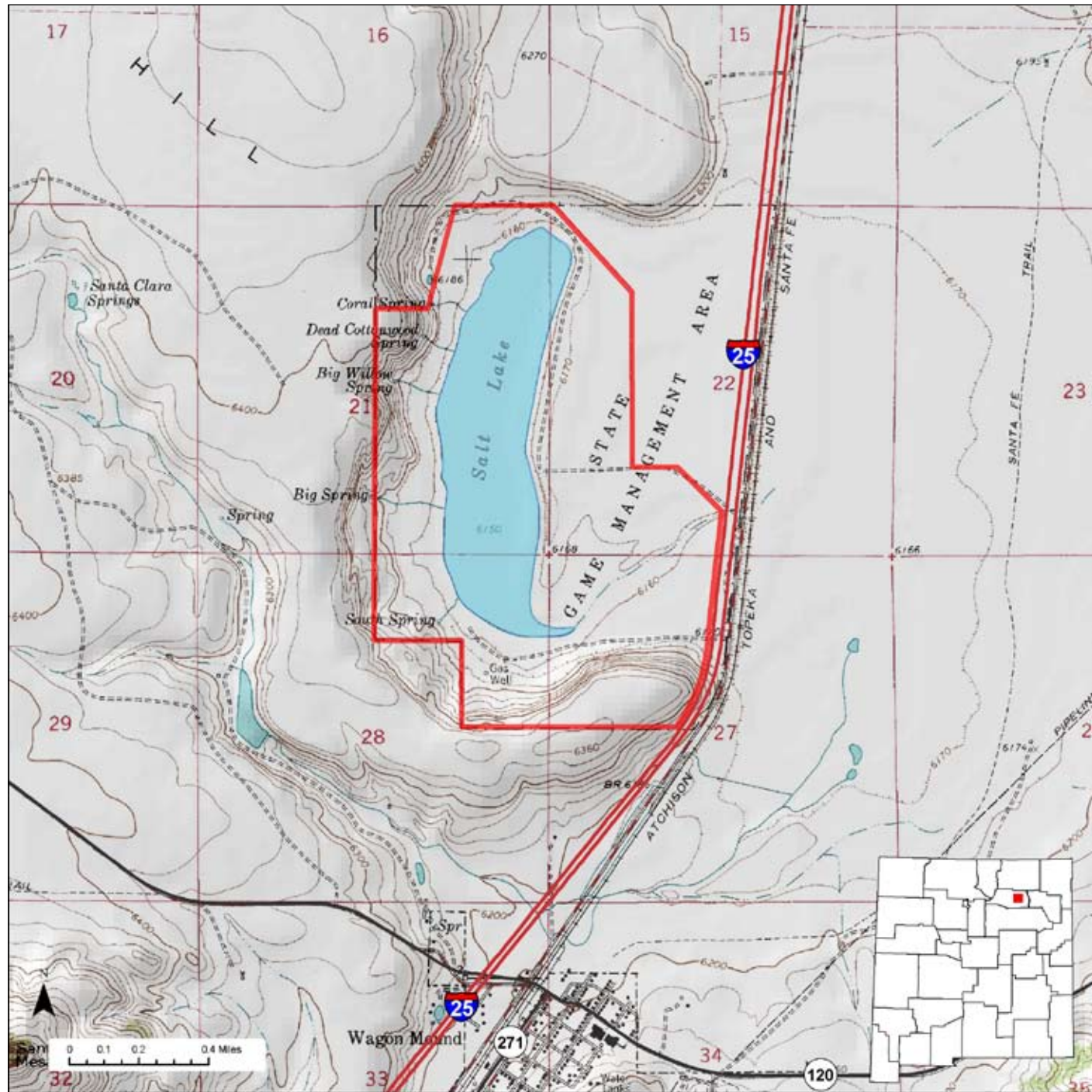




Wagon Mound Wildlife Area



Location: Wagon Mound Wildlife Area is located about 1/2 mile northwest of Wagon Mound.

Total Acreage: 850 acres.

Purchase: The final purchase of property forming Wagon Mound Wildlife Area was made in 1953. The area provides habitat for waterfowl.

Description: The Salt Lake is surrounded by high plains grasslands and bounded on three sides by a high ridge.

For More information: More information about hunting, fishing and other activities, may be found on the Department's website: www.wildlife.state.nm.us/.

GAIN Activities

- ✓ Wildlife Viewing
- ✓ Photographing

Access

- ✓ Hiking
- ✓ Bicycling
- ✓ Horseback Riding

Hunting and Fishing

- ✓ Hunting
- ✓ No fishing

Closures

- ✓ No

Facilities

- ✓ No rest rooms
- ✓ No camp sites
- ✓ No drinking water

Fees

- ✓ Yes

Motorized Vehicles

- ✓ Not allowed beyond the roadway and parking area

For more information on hunting and fishing rules and seasons, please read current hunting or fishing Rules and Information Booklets available on the Department's website, at Department offices, or from license vendors state-wide.

What to See, Do, and Learn

Wildlife Viewing-Wildlife watchers may see various waterfowl year-round. Good binoculars are important. The best time to view wildlife is at dawn or dusk.

Photographing-The best time to photograph wildlife is at dawn or dusk. A telephoto lens may be important.

Hiking-Hiking is the best way to see wildlife at Wagon Mound Wildlife Area year-round or other wildlife management areas.

Bicycling-Allowed year round only on established roads.

Horseback Riding-Allowed year-round.

Camping-Not allowed at Wagon Mound Wildlife Area.

Hunting-Waterfowl hunting allowed during open season.

Fishing-No fishing opportunities.

Closures-Wagon Mound Wildlife Area is open year-round.

Facilities-Wagon Mound Wildlife Area does not have rest rooms, camp sites, or drinking water.

Fees-Hunters must have appropriate licenses and permits. Wildlife viewers, photographers, hikers, bicyclists, and horseback riders must have a current GAIN Permit and a Habitat Management and Access Validation.

Motorized Vehicles-Not allowed beyond parking area.

