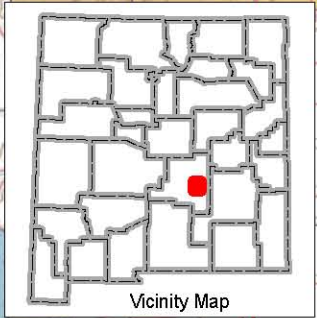


480000 000000

490000 000000

NMDGF provides maps as a courtesy for general location purposes only. NMDGF makes no warranty and assumes no responsibility or liability for the accuracy, timeliness, completeness, or suitability of this map for any particular use.



Vicinity Map

3730000 000000

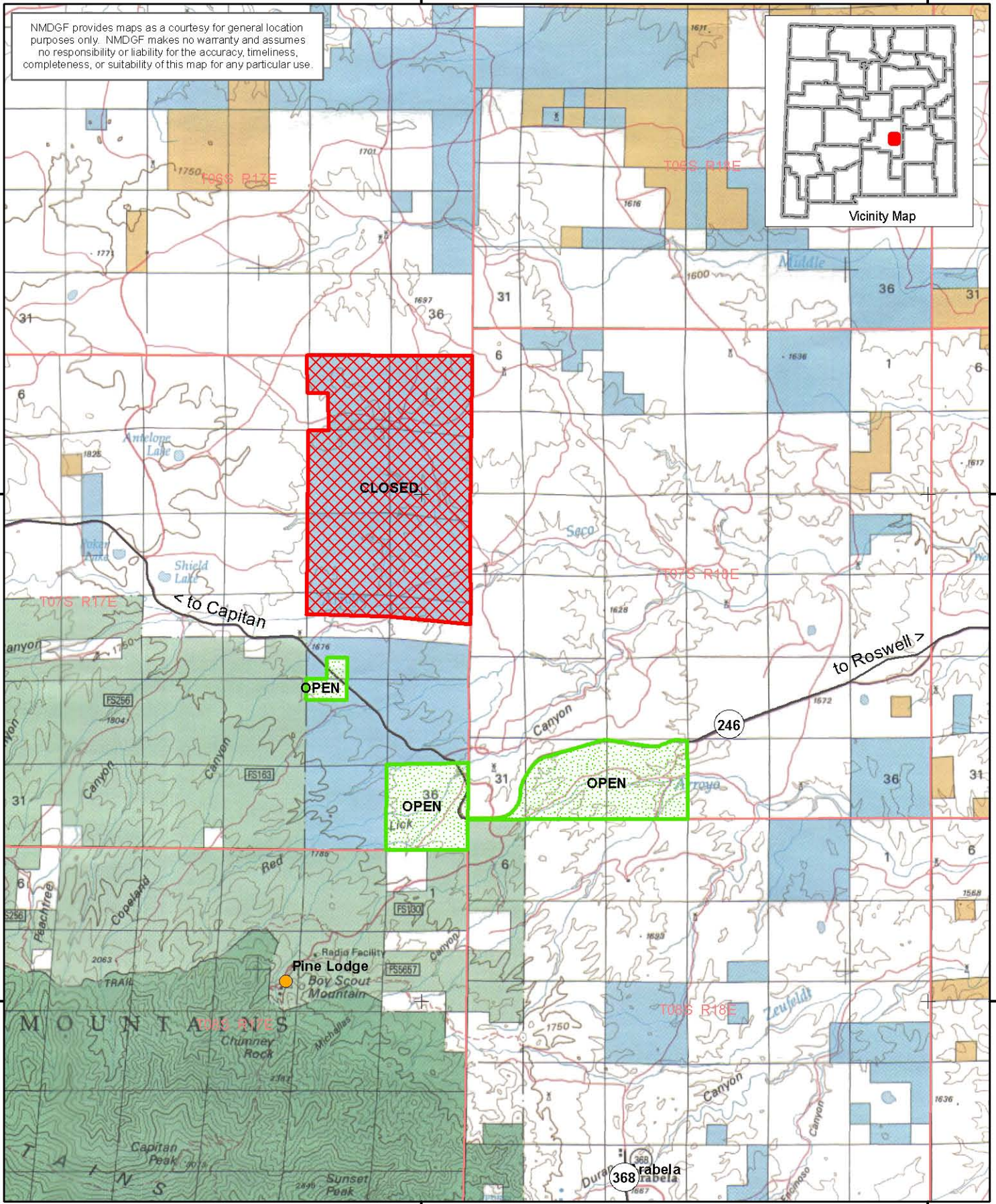
3730000 000000

3720000 000000



3720000 000000

480000 000000

490000 000000



Armstrong Ranch - GMU 37 NM Game & Fish Unitizing Agreement Areas

-  State Land - Closed to Public Hunting
-  Private Land - Open to Public Hunting

October 2009

Base Map: BLM EDITION 30x60 Minute Series
SANTA ROSA, NEW MEXICO

For additional maps and information contact the
New Mexico Public Lands Information Center.
<http://www.publiclands.org/explore>

