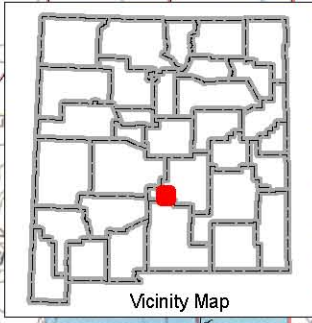


NMDGF provides maps as a courtesy for general location purposes only. NMDGF makes no warranty and assumes no responsibility or liability for the accuracy, timeliness, completeness, or suitability of this map for any particular use.

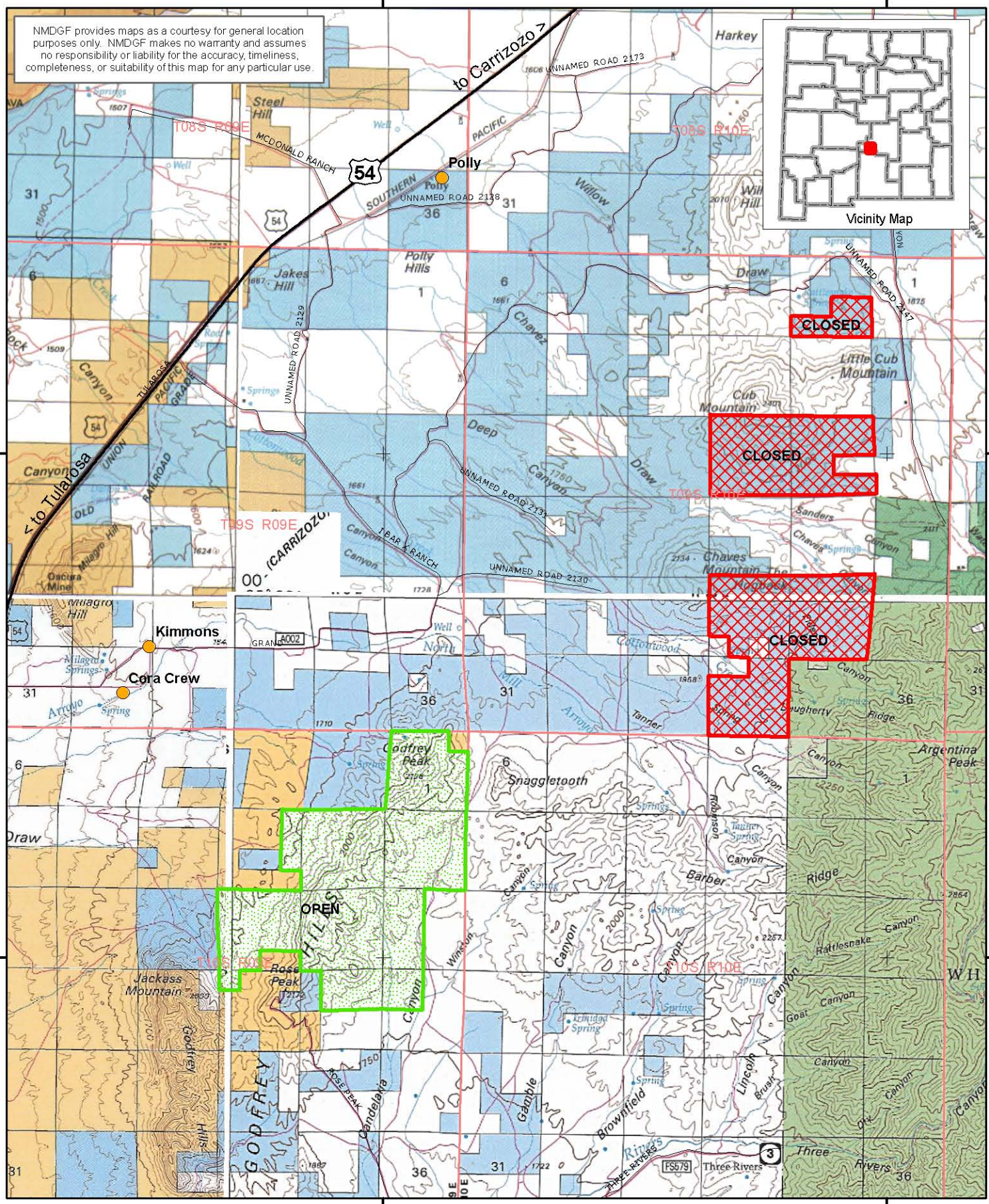


3710000 000000

3710000 000000

3700000 000000

3700000 000000



### I Bar X (Stephenson) Ranch - GMU 36 NM Game & Fish Unitizing Agreement Areas

- State Land - Closed to Public Hunting
- Private Land - Open to Public Hunting

October 2009

Base Map: BLM EDITION 30x60 Minute Series  
RUIDOSO and CARRIZOZO, NEW MEXICO  
For additional maps and information contact the  
New Mexico Public Lands Information Center.  
<http://www.publiclands.org/explore>

