



New Mexico Deer Harvest Survey Report for the 2009-2010 Season

New Mexico Department of Game and Fish
Federal Aid in Wildlife Restoration
Grant W-93-R-51

Prepared by Barry Hale

The New Mexico Department of Game and Fish (Department) annually prepares a summary report of deer hunter and harvest effort. This report summarizes number of permits issued, numbers of hunters, harvest, and success rates from survey respondents and uses these data to estimate overall values of these parameters based upon survey responses. Trends in hunter numbers, harvest and success rate, as provided in this report, are used to develop recommendations for sport-hunting opportunity as well as habitat management activities.

The Department utilizes a mandatory Hunter-Trapper Reporting System (Reporting System) that requires all hunters obtaining an elk, deer or trapping license to report their hunting effort. The Reporting System began in 2006-2007 in an attempt to substantially increase the hunter-harvest survey response rate and thereby improve overall accuracy of the harvest data. Since implementation, response rates from deer hunters have averaged approximately 79%. This has led managers to possess a high degree of confidence in reported figures and calculated estimates found in New Mexico's deer harvest survey report.

For the 2009-2010 season, all hunters obtaining deer permits were required to report their hunting effort and harvest by February 15, 2010. If they failed to report by this deadline, any applications the hunter submitted for draw hunts for the 2010-2011 season would be rejected. This same requirement applied to any hunters desiring to obtain private land-only permits. To remain eligible, hunters were provided an extended deadline of April 7, 2010 (application deadline) to submit their harvest information; however, they were required to submit an \$8.00 late fee along with their report.

Hunter-harvest survey information was collected in two manners. First, the hunter could call a toll free number (1.888.248.6866) beginning January 4, 2010 and provide harvest information to a live operator or use an online website (www.newmexico-hunt.com) after September 1, 2009 to report their harvest. The hunter was required to provide only basic information that included whether the hunter hunted and/or harvested a deer. Each hunter was also asked to rate their hunting experience. In order to match the license/permit data base, the hunter had to provide his/her name, date of birth, and last four numbers of their social security number. A confirmation number was provided to the hunter at the conclusion of the survey as validation of filing their report.

To hunt deer in New Mexico during the 2009-2010 season, a hunter must have obtained either a public land deer permit issued through the public draw or web-based sale of leftover draw permits or a private land-only permit issued from a license vendor. In addition, the hunter must have purchased a license valid for hunting deer. The draw permit authorized the hunter to hunt on any open public land in the Game Management Unit (Unit) for which the permit was valid as well as any private land in that same

Unit where the hunter possessed written permission by the landowner. The permit was valid only during the established hunt period and for the sporting arms type associated with the hunt code. The private land-only permit was valid only on private deeded acres within the Unit and only for the hunt period and sporting arms type associated with the hunt code. The private land-only hunter must have possessed written permission from each landowner whose property the hunter hunted in the Unit. Private land hunting opportunity in a few selected Units in the Northwest Area (Units 2A, 2B, 2C, 4 and 5A) was only provided through the public draw.

An additional enhancement to the Department's licensing protocol initiated this season was the establishment and implementation of a Customer Identification Number (CIN). The CIN is a unique identifier generated and assigned to each applicant who applied for a special hunts draw license as well as any hunter who obtained a license through an authorization (private land elk, pronghorn, enhancement, etc.). The CIN is a permanent number that, once generated, will be used to identify the sportsman in all future transactions with the Department.

The CIN consists of the sportsman's name, date of birth and last four numbers of the social security number along with a three digit alpha-numeric sequence. Use of this CIN is expected to reduce errors in sportsman identification when applying for or purchasing a license as well as when reporting hunting effort and harvest.

The 2009-2010 license year was the first using the CIN. Expected results of reduced errors should be experienced within one to two years (once the majority of regular sportsmen have obtained their CIN). Ultimately, use of the CIN is expected to be used for all licensing transactions to include anglers, small game and remaining big game species where licenses and/or permits are vended outside the special hunts draw or authorizations, i.e. general license vendors.

PREPARING THE REPORT

Data Quality: All hunter information associated with permits issued through the draw and web-based sale was sufficient for analysis. However, of the 7,245 private land-only permits issued through vendors, 316 were unusable (incomplete or incorrect data). Included with the unusable permits were 66 permits issued to invalid hunt codes i.e., hunt codes where private land hunting is awarded only through the draw (selected Northwest Area Units) or hunt codes reserved for public hunting on Wildlife Management Areas. These permit numbers are listed in Table 13 (shaded Units) with their associated hunt code.

There were 57 instances where the number of returns received for a hunt code exceeded the number of permits reportedly issued for that hunt code. This occurred specifically with private land-only permits and is likely the result of incomplete and/or inaccurate data provided on many of the permits. As a result, 57 permits were added into the permits issued column of Table 13 to balance the number of permits issued with number of returns. The assumption made was that hunters reported accurately to the hunt code for which they hunted although the hunt code written on the permit may have been faulty. Specific hunt codes where this insertion occurred are highlighted in Table 13. Because of these relatively few instances, no significant difference to the overall estimates was assumed.

Due to these manipulations, 248 private land-only permits (55 with invalid hunt codes as well as the remaining 193 with unusable data) are listed as 'Unknowns' and included at the bottom of Table 2. Estimates for hunter numbers and harvest for 'Unknowns' were made by applying the overall private

land-only participation rate (53.26%) and success rate (53,25%) calculated from the usable permit data and are also provided in Table 2.

Data Analysis and Reporting: Data were retrieved and compiled from three sources that included the Reporting System database which contained all harvest returns, the Vendor License Sales (VLS) database where all private land-only permits issued were reported and ORACLE where all draw and web-based sale permits information reside. Only the data that had complete information were used in the primary analyses. As described before, some VLS data were incomplete and/or inaccurate and therefore not used. Most anomalous data were lumped together and reported as 'Unknowns' with the exception of the 57 private land-only permits inserted into Table 13 to balance permits with returns.

Estimates provided in this report were dependant upon number of permitted hunters within each category, number of survey respondents within each category and the values reported from survey responses. For the specific characteristic of interest (hunters or harvest), the formula used to make the estimate was as follows:

$$((\text{Number of Permits} \div \text{Number of Responses})) \times (\text{Reported Characteristic of Interest})$$

A range of values can be used by establishing the reported value as the 'minimum' and the estimated value as the 'maximum'. No other statistical methods were used and no confidence intervals are provided.

Finally, Tables 1-13 that accompany this summary report present information in similar format. All tables provide number of permits issued, total returns, response rates, reported number of hunters and harvest, hunter success rates, and estimated number of hunters and harvest. Hunter satisfaction data are also presented in Tables 1-5.

Each table presents data from a unique prospective depending upon the interest(s) of any particular reader. Due to the variety of ways the information is presented and compared, rounding differences often lead to slightly different totals among tables. Therefore, when reporting and describing total values used in this report, the author has chosen to reference the most complete summary information available as presented in Table 2.

REPORT SUMMARIES

Permits Issued: A total of 42,618 permits were issued to hunt deer in New Mexico during the 2009-2010 season. Of that total, 35,358 permits (83.0%) were issued through the public draw and subsequent web-based sale of leftover permits (an increase of 1,162 permits from 2008-2009) while 7,245 (17.0%) were private land-only permits issued through vendors including Department offices (a 0.5% increase of 35 permits from 2008-2009). Ninety-four (94) of the private land-only permits were issued as part of the Private Land Deer Conservation Incentive Program. Another four permits were issued pursuant to the Lieutenant Governor's Deer Enhancement Program (two permits) and the Big Game Enhancement Program (two permits).

Of the 42,260 usable permits issued through the draw, web-based sale, and private land-only permits (this value does not include enhancement or incentive permits and excludes unknowns and private land-only permits issued with invalid hunt codes), 28,216 permits (66.8%) were issued to center-fire

rifle hunters, 7,614 permits (18.0%) were issued to bow hunters, and 6,430 permits (15.2%) were issued to muzzle-loader hunters (Table 8).

Response Rates: The overall response rate in 2009-2010 was 79.6%. This falls short of the targeted response rate of 80% established prior to implementation of the Reporting System.

Public land permit hunters responded at a much higher rate (85.2%) than did private land hunters (57.2%; Table 11). Muzzle-loader hunters responded at the highest rate (86.3%; Table 5) followed closely by bow hunters (85.8%; Table 4) with center-fire rifle hunters responding at the lowest rate (77.3%; Table 3). Response rates for each sporting arm type were lower than in 2008-2009.

Harvest: A total of 10,457 deer were reported harvested in the 2009-2010 season. This represents the reported harvest from all permitted hunters who either obtained public draw, private land-only, incentive, or enhancement permits (Table 2). Estimated harvest was 13,205 (Table 2) which includes the estimated harvest for the 'Unknown' category (70 deer). This represents an increase of 10.5% from the estimated harvest in 2008-2009 of 11,948.

Hunters using center-fire rifles accounted for 74.2% of the harvest while 12.4% of the harvest was taken by bow hunters and 13.5% by muzzle-loader hunters (Table 8). Hunters obtaining permits to hunt on public land harvested 78.7% of the total while hunters holding private land permits harvested 21.3%.

Hunter Numbers: A total of 29,407 respondents reported they hunted in 2009-2010 (Table 2). The estimated total number of hunters was 37,069 (4.4% increase from 2008-2009) and represents 87.0% utilization (a slight increase from 2008-2009). Approximately 65.7% of reporting hunters used center-fire rifles while 18.1% used bow and 16.2% used muzzleloaders (Table 8). Nearly 72.7% of those who drew a permit to hunt on public land reported they hunted while only 54.8% of those who obtained permits to hunt on private land reported hunting.

Hunter Success: Overall hunter success rate (reported harvest ÷ reported number of hunters), was 35.6% (up moderately from 33.6% in 2008-2009). Success rates for individual sporting arms types were; 40.1% for center-fire rifle, 24.3% for bow and 29.5% for muzzle-loaders (Table 8). Hunter success rates for rifle and muzzle-loaders were higher than in 2008-2009 while the success rate for bow was slightly lower. Hunters with private land permits fared better with a 53.0% success rate than hunters issued permits to hunt on public land with a 32.6% success rate (Table 11).

White-tailed Deer Summary: A separate Coues White-tailed Deer bag limit has been established in three Southwest Area Units (23, 24, and 27). For the 2009-2010 season, 726 permits were issued. Four hundred seventy (470) hunters reported a harvest of 148 deer with an overall success rate of 31.5%. This represents a substantial increase over the 2008-2009 season when the success rate was 18.0%. Estimated number of hunters was 529 while estimated harvest of Coues White-tailed deer in these three Units was 167 (Table 6).

For the Texas White-tailed deer only hunts established in the Northeast Area (Units 41, 42, 54, 55, 57, 58 and 59), a total of 166 permits were issued. One hundred seven (107) hunters reported a harvest of 41 deer (38.3% success rate). From these reported figures, an estimated 139 hunters harvested 53 deer (Table 7).

Youth-only Summary: A total of 1,917 permits were issued for youth-only hunts in 2009-2010 (a 117.1% increase from 2008-2009). This increase is largely due to the increase in youth-only hunts established this season. Distribution of these youth-only permits was 1,358 rifle, 99 bow and 176 muzzle-loader. A reported 1,457 hunters harvested 755 deer with an overall success rate of 51.8%. Estimated values for youth-only hunts were 1,710 hunters and 886 deer (Table 9).

Mobility Impaired Summary: One hundred fifty (150) permits were issued to Mobility Impaired hunters with 105 reporting they harvested 34 deer for an overall success rate of 32.4% (down from 42.0% in 2008-2009). With an 88.7% response rate, estimated values for Mobility Impaired hunts were 118 hunters harvesting 38 deer (Table 10).

Hunter Satisfaction: The 2009-2010 season was the third season that hunter satisfaction data was compiled and summarized. When reporting hunting effort, hunters were asked to rate their hunting experience on a scale of 1 to 5 with 5 being the highest score. The average rating for all Units across all sporting arms types was 3.3 (range 2.7 – 4.3; Table 2). This represents no change from the average rating of 3.3 in 2008-2009. Average ratings by sporting arms type were; rifle—3.4, bow—3.3 and muzzle-loaders—3.1 (Tables 3-5). Ratings for specific hunt codes and Units are provided in Table 1.

New Mexico Deer Hunting Trends: Because the Reporting System has been in existence for four consecutive years, reasonable inferences can now be made when comparing trends of hunter numbers, harvest, and success rates with those years prior to 2006-07. The following discussions are based upon information presented in Figure 1 which compares the 2009-2010 hunting season with the previous four years.

Estimated numbers of hunters indicate a relatively stable trend over the previous five years. The 2009-2010 season estimate of 37,069 hunters was 4.4% higher than prior year and 3.8% above the 5-year running average of 35,715 hunters (min—33,997; max—37,069).

The 2009-2010 harvest estimate of 13,205 was 10.5% higher than the previous year yet 14.7% higher than the 5-year running average of 11,515 (min—9,206; max—13,205). The 5-year harvest trend is continuing to show an increasing trajectory.

The 2009-2010 hunter success rate was 35.6% representing a 6% increase over prior year. Hunter success continues an overall increase over the five years peaking in 2007-2008 at 38.8%. The 2009-2010 hunter success rate remains higher than the 5-year running average of 32.2% (min—24.9%; max—38.8%).

Hunter success rate experienced a decline immediately after implementation of the Reporting System in 2006-2007. This was somewhat expected based upon the assumption there was some bias in the volunteer survey in that successful hunters were more likely to respond than unsuccessful hunters i.e., ‘happy hunter’ bias. With the mandatory reporting requirement, more unsuccessful hunters would report thereby reducing hunter success rate. Although this was indeed observed in 2006-2007, since then hunter success rates have seen an increase and are higher than immediately prior to the Reporting System.

Estimated parameters for hunter numbers and harvest have shown less dramatic shifts since implementation of the Reporting System in 2006-2007. However, there is no reason to believe that estimates generated from volunteer reporting prior to 2006-2007 are not reliable.

New Mexico Deer Hunting; 5-year trends (2005-2010)

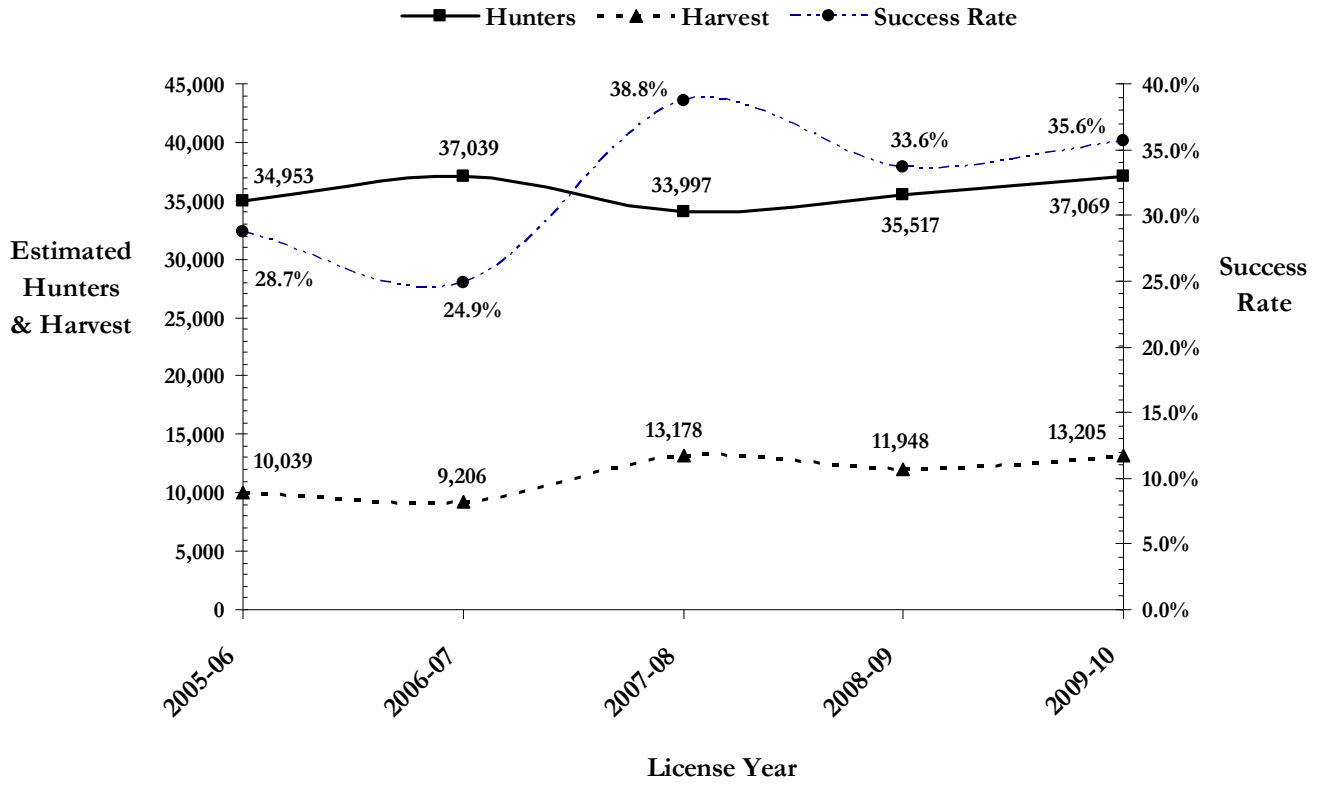


Figure 1. New Mexico Deer Hunting Trends; NMDGF.

LIST OF TABLES

- Table 1: 2009-2010 New Mexico Deer Harvest Report—Hunt Code Summary (Total Draw and Private Land-Only Permits)
- Table 2: 2009-2010 New Mexico Deer Harvest Report—Unit Summary (All Sporting Arms)
- Table 3: 2009-2010 New Mexico Deer Harvest Report—Unit Summary (Sporting Arm-Rifle)
- Table 4: 2009-2010 New Mexico Deer Harvest Report—Unit Summary (Sporting Arm-Bow)
- Table 5: 2009-2010 New Mexico Deer Harvest Report—Unit Summary (Sporting Arm-Muzzleloader)
- Table 6: 2009-2010 New Mexico Deer Harvest Report—Coues White-tailed Deer Summary
- Table 7: 2009-2010 New Mexico Deer Harvest Report—Texas White-tailed Deer Summary
- Table 8: 2009-2010 New Mexico Deer Harvest Report—Sporting Arms Summary
- Table 9: 2009-2010 New Mexico Deer Harvest Report—Youth-only Summary
- Table 10: 2009-2010 New Mexico Deer Harvest Report—Mobility Impaired Summary
- Table 11: 2009-2010 New Mexico Deer Harvest Report—Public vs. Private Land Summary
- Table 12: 2009-2010 New Mexico Deer Harvest Report—Hunt Code Summary (Public Draw Permits)
- Table 13: 2009-2010 New Mexico Deer Harvest Report—Hunt Code Summary (Private Land-Only Permits)

Table 1. 2009-2010 New Mexico Deer Harvest Report--Hunt Code Summary (Total Draw and Private Land-Only Permits); NMDGF.

GMU	Hunt Code	Permits Issued	Total Returns	Response Rate	Reported		Success Rate	Estimated		Satisfaction Rating
					Hunters	Harvest		Hunters	Harvest	
2A	DER-1-100	202	178	88.1%	154	64	41.6%	175	73	3.0
	DER-1-101	50	45	90.0%	42	22	52.4%	47	24	3.4
	DER-1-102	20	14	70.0%	11	7	63.6%	16	10	3.5
	Total Rifle	272	237	87.1%	207	93	44.9%	238	107	3.1
	DER-2-103	40	33	82.5%	27	4	14.8%	33	5	3.3
	DER-2-104	80	74	92.5%	64	22	34.4%	69	24	3.1
	DER-2-105	2	2	100.0%	2	1	50.0%	2	1	5.0
	DER-2-106	6	3	50.0%	3	1	33.3%	6	2	2.7
	Total Archery	128	112	87.5%	96	28	29.2%	110	32	3.2
	DER-3-107	60	51	85.0%	45	16	35.6%	53	19	3.4
	DER-3-108	2	1	50.0%	1	1	100.0%	2	2	1.0
	Total Muzzle	62	52	83.9%	46	17	37.0%	55	20	3.3
	TOTAL	462	401	86.8%	349	138	39.5%	402	159	3.2
2B	DER-1-109	300	244	81.3%	217	152	70.0%	267	187	4.0
	DER-1-110	390	342	87.7%	315	211	67.0%	359	241	4.0
	DER-1-111	466	425	91.2%	404	275	68.1%	443	302	4.0
	DER-1-112	150	139	92.7%	122	65	53.3%	132	70	3.8
	DER-1-113	19	17	89.5%	16	7	43.8%	18	8	3.9
	DER-1-114	13	10	76.9%	10	8	80.0%	13	10	4.4
	DER-1-115	71	46	64.8%	46	28	60.9%	71	43	3.5
	Total Rifle	1,409	1,223	86.8%	1,130	746	66.0%	1,302	859	4.0
	DER-2-116	130	115	88.5%	103	9	8.7%	116	10	3.1
	DER-2-117	180	165	91.7%	150	41	27.3%	164	45	3.5
	DER-2-118	19	16	84.2%	13	0	0.0%	15	0	3.2
	DER-2-119	49	39	79.6%	37	11	29.7%	46	14	3.7
	DER-2-120	3	3	100.0%	2	0	0.0%	2	0	1.5
	DER-2-121	7	5	71.4%	4	0	0.0%	6	0	3.3
	Total Archery	388	343	88.4%	309	61	19.7%	350	69	3.3
	DER-3-122	175	152	86.9%	130	31	23.8%	150	36	3.2
	DER-3-123	20	19	95.0%	15	4	26.7%	16	4	2.7
	DER-3-124	4	4	100.0%	4	2	50.0%	4	2	3.0
	Total Muzzle	199	175	87.9%	149	37	24.8%	169	42	3.1
	TOTAL	1,996	1,741	87.2%	1,588	844	53.1%	1,821	968	3.8
	2C	DER-1-125	23	20	87.0%	19	13	68.4%	22	15
DER-1-126		9	6	66.7%	6	6	100.0%	9	9	4.5
Total Rifle		32	26	81.3%	25	19	76.0%	31	23	4.3
DER-2-127		66	58	87.9%	56	28	50.0%	64	32	3.6
DER-2-128		0	0	0.0%	0	0	0.0%	0	0	---
Total Archery		66	58	87.9%	56	28	50.0%	64	32	3.6
DER-3-129		27	24	88.9%	22	11	50.0%	25	12	4.4
DER-3-130		0	0	0.0%	0	0	0.0%	0	0	---
Total Muzzle		27	24	88.9%	22	11	50.0%	25	12	4.4
TOTAL	125	108	86.4%	103	58	56.3%	119	67	3.9	

GMU	Hunt Code	Permits Issued	Total Returns	Response Rate	Reported		Success Rate	Estimated		Satisfaction Rating
					Hunters	Harvest		Hunters	Harvest	
4 WMAs	DER-1-131	21	19	90.5%	16	4	25.0%	18	4	2.9
	DER-1-132	21	19	90.5%	18	13	72.2%	20	14	3.2
	DER-1-133	10	9	90.0%	8	3	37.5%	9	3	2.3
	DER-1-134	5	5	100.0%	5	5	100.0%	5	5	4.8
	TOTAL	57	52	91.2%	47	25	53.2%	52	27	3.1
4 Private	DER-1-135	149	108	72.5%	88	47	53.4%	121	65	3.7
	DER-1-136	152	102	67.1%	87	46	52.9%	130	69	3.7
	Total Rifle	301	210	69.8%	175	93	53.1%	251	133	3.7
	DER-2-137	57	40	70.2%	34	8	23.5%	48	11	3.9
	DER-3-138	57	41	71.9%	38	21	55.3%	53	29	3.5
TOTAL	415	291	70.1%	247	122	49.4%	352	174	3.7	
5A Public	DER-1-139	34	27	79.4%	26	17	65.4%	33	21	3.9
	DER-2-141	30	26	86.7%	25	6	24.0%	29	7	3.6
	TOTAL	64	53	82.8%	51	23	45.1%	62	28	3.7
5A Private	DER-1-140	197	142	72.1%	135	80	59.3%	187	111	4.1
	DER-2-142	58	47	81.0%	38	12	31.6%	47	15	4.3
	TOTAL	255	189	74.1%	173	92	53.2%	233	124	4.1
5B	DER-1-143	43	42	97.7%	37	29	78.4%	38	30	4.1
	DER-1-144	14	14	100.0%	14	12	85.7%	14	12	4.4
	TOTAL	57	56	98.2%	51	41	80.4%	52	42	4.2
6 A&C	DER-1-145	233	173	74.2%	160	51	31.9%	215	69	3.1
	DER-1-146	23	20	87.0%	16	7	43.8%	18	8	3.5
	Total Rifle	256	193	75.4%	176	58	33.0%	233	77	3.1
	DER-2-147	106	90	84.9%	75	18	24.0%	88	21	3.3
	DER-3-148	107	89	83.2%	83	37	44.6%	100	44	3.3
	TOTAL	469	372	79.3%	334	113	33.8%	421	142	3.2
7	DER-1-149	69	44	63.8%	42	24	57.1%	66	38	3.5
	DER-2-150	11	8	72.7%	6	3	50.0%	8	4	2.5
	DER-3-151	10	7	70.0%	7	2	28.6%	10	3	2.3
	TOTAL	90	59	65.6%	55	29	52.7%	84	44	3.2
8	DER-1-450	3	3	100.0%	2	0	0.0%	2	0	2.0
	DER-2-152	52	40	76.9%	35	5	14.3%	46	7	2.7
	DER-2-153	50	44	88.0%	38	9	23.7%	43	10	3.6
	Total Archery	102	84	82.4%	73	14	19.2%	89	17	3.2
	DER-3-451	3	2	66.7%	2	1	50.0%	3	2	2.0
TOTAL	108	89	82.4%	77	15	19.5%	93	18	3.1	
9	DER-1-154	48	32	66.7%	32	10	31.3%	48	15	3.2
	DER-1-155	13	13	100.0%	13	6	46.2%	13	6	4.0
	Total Rifle	61	45	73.8%	45	16	35.6%	61	22	3.4
	DER-2-156	12	9	75.0%	8	2	25.0%	11	3	3.0
	DER-3-157	13	12	92.3%	10	2	20.0%	11	2	2.5
TOTAL	86	66	76.7%	63	20	31.7%	82	26	3.2	

GMU	Hunt Code	Permits Issued	Total Returns	Response Rate	Reported		Success Rate	Estimated		Satisfaction Rating
					Hunters	Harvest		Hunters	Harvest	
10	DER-1-158	92	75	81.5%	70	22	31.4%	86	27	3.6
	DER-1-159	93	76	81.7%	70	23	32.9%	86	28	3.3
	DER-1-160	124	96	77.4%	82	28	34.1%	106	36	3.1
	DER-1-161	40	30	75.0%	28	13	46.4%	37	17	3.9
	DER-1-162	21	20	95.2%	17	3	17.6%	18	3	2.9
	Total Rifle	370	297	80.3%	267	89	33.3%	333	111	3.3
	DER-2-163	132	117	88.6%	103	11	10.7%	116	12	3.1
	DER-3-164	104	87	83.7%	80	29	36.3%	96	35	3.5
	TOTAL	606	501	82.7%	450	129	28.7%	544	156	3.3
12	DER-1-165	245	179	73.1%	144	30	20.8%	197	41	2.9
	DER-2-166	82	69	84.1%	37	3	8.1%	44	4	2.0
	DER-3-167	83	62	74.7%	50	12	24.0%	67	16	2.8
	TOTAL	410	310	75.6%	231	45	19.5%	306	60	2.7
13	DER-1-168	535	420	78.5%	366	65	17.8%	466	83	3.0
	DER-1-169	561	405	72.2%	344	49	14.2%	477	68	3.0
	DER-1-170	103	87	84.5%	82	43	52.4%	97	51	3.7
	Total Rifle	1,199	912	76.1%	792	157	19.8%	1,041	206	3.1
	DER-2-171	156	133	85.3%	82	5	6.1%	96	6	2.8
	DER-2-172	157	146	93.0%	104	7	6.7%	112	8	2.8
	Total Archery	313	279	89.1%	186	12	6.5%	209	13	2.8
	DER-3-173	511	447	87.5%	389	51	13.1%	445	58	2.6
	TOTAL	2,023	1,638	81.0%	1,367	220	16.1%	1,688	272	2.9
14	DER-1-174	49	35	71.4%	31	11	35.5%	43	15	3.3
	DER-2-175	27	24	88.9%	23	5	21.7%	26	6	3.2
	DER-3-176	51	44	86.3%	38	15	39.5%	44	17	3.3
	TOTAL	127	103	81.1%	92	31	33.7%	113	38	3.3
15	DER-2-177	102	91	89.2%	67	2	3.0%	75	2	2.7
	DER-2-178	104	90	86.5%	58	8	13.8%	67	9	2.7
	Total Archery	206	181	87.9%	125	10	8.0%	142	11	2.7
	DER-3-179	257	233	90.7%	190	47	24.7%	210	52	2.8
	DER-3-180	101	96	95.0%	81	30	37.0%	85	32	3.2
	Total Muzzle	358	329	91.9%	271	77	28.4%	295	84	2.9
TOTAL	564	510	90.4%	396	87	22.0%	438	96	2.9	
16	DER-1-181	307	248	80.8%	206	71	34.5%	255	88	3.5
	DER-1-182	311	256	82.3%	211	56	26.5%	256	68	3.3
	DER-1-183	102	89	87.3%	82	49	59.8%	94	56	3.8
	DER-1-184	26	21	80.8%	14	7	50.0%	17	9	3.1
	Total Rifle	746	614	82.3%	513	183	35.7%	623	222	3.4
	DER-2-185	203	168	82.8%	113	12	10.6%	137	15	3.1
	DER-2-186	201	181	90.0%	146	34	23.3%	162	38	3.0
	Total Archery	404	349	86.4%	259	46	17.8%	300	53	3.0
	DER-3-187	303	269	88.8%	234	54	23.1%	264	61	3.0
TOTAL	1,453	1,232	84.8%	1,006	283	28.1%	1,186	334	3.2	

GMU	Hunt Code	Permits Issued	Total Returns	Response Rate	Reported		Success Rate	Estimated		Satisfaction Rating
					Hunters	Harvest		Hunters	Harvest	
17	DER-1-188	195	173	88.7%	155	79	51.0%	175	89	3.5
	DER-1-189	190	159	83.7%	151	76	50.3%	180	91	3.5
	DER-1-190	108	91	84.3%	81	43	53.1%	96	51	3.5
	Total Rifle	493	423	85.8%	387	198	51.2%	451	231	3.5
	DER-2-191	200	162	81.0%	126	16	12.7%	156	20	3.2
	DER-2-192	202	179	88.6%	160	24	15.0%	181	27	3.3
	Total Archery	402	341	84.8%	286	40	14.0%	337	47	3.3
	DER-3-193	204	182	89.2%	162	42	25.9%	182	47	3.5
TOTAL	1,099	946	86.1%	835	280	33.5%	970	325	3.4	
18	DER-1-194	160	117	73.1%	108	15	13.9%	148	21	2.6
	DER-1-195	122	95	77.9%	87	25	28.7%	112	32	2.9
	Total Rifle	282	212	75.2%	195	40	20.5%	259	53	2.7
	DER-2-196	51	46	90.2%	37	6	16.2%	41	7	2.6
	DER-2-197	56	54	96.4%	50	5	10.0%	52	5	2.8
	Total Archery	107	100	93.5%	87	11	12.6%	93	12	2.7
	DER-3-198	101	92	91.1%	80	22	27.5%	88	24	2.9
TOTAL	490	404	82.4%	362	73	20.2%	439	89	2.8	
19	DER-3-199	10	10	100.0%	8	5	62.5%	8	5	3.8
20	DER-1-200	109	86	78.9%	68	10	14.7%	86	13	2.7
	DER-1-201	109	95	87.2%	75	31	41.3%	86	36	3.2
	Total Rifle	218	181	83.0%	143	41	28.7%	172	49	3.0
	DER-2-202	22	16	72.7%	11	0	0.0%	15	0	2.1
	DER-2-203	28	27	96.4%	22	6	27.3%	23	6	3.1
	Total Archery	50	43	86.0%	33	6	18.2%	38	7	2.8
	DER-3-204	102	94	92.2%	70	19	27.1%	76	21	2.7
TOTAL	370	318	85.9%	246	66	26.8%	286	77	2.9	
21	DER-1-205	594	453	76.3%	396	121	30.6%	519	159	3.2
	DER-1-206	571	456	79.9%	378	115	30.4%	473	144	3.2
	DER-1-207	107	88	82.2%	77	39	50.6%	94	47	3.6
	Total Rifle	1,272	997	78.4%	851	275	32.3%	1,086	351	3.3
	DER-2-208	93	86	92.5%	63	4	6.3%	68	4	3.2
	DER-2-209	172	151	87.8%	121	38	31.4%	138	43	3.8
	Total Archery	265	237	89.4%	184	42	22.8%	206	47	3.6
	DER-3-210	511	458	89.6%	387	74	19.1%	432	83	2.8
TOTAL	2,048	1,692	82.6%	1,422	391	27.5%	1,721	473	3.2	
22	DER-1-211	119	89	74.8%	73	23	31.5%	98	31	3.1
	DER-1-212	110	93	84.5%	73	21	28.8%	86	25	3.0
	Total Rifle	229	182	79.5%	146	44	30.1%	184	55	3.0
	DER-2-213	21	18	85.7%	10	2	20.0%	12	2	3.0
	DER-2-214	25	22	88.0%	14	5	35.7%	16	6	3.7
	Total Archery	46	40	87.0%	24	7	29.2%	28	8	3.4
	DER-3-215	102	91	89.2%	68	19	27.9%	76	21	3.0
TOTAL	377	313	83.0%	238	70	29.4%	287	84	3.1	

GMU	Hunt Code	Permits Issued	Total Returns	Response Rate	Reported		Success Rate	Estimated		Satisfaction Rating
					Hunters	Harvest		Hunters	Harvest	
23	DER-1-216	556	431	77.5%	372	145	39.0%	480	187	3.3
	DER-1-217	54	43	79.6%	34	17	50.0%	43	21	3.4
	DER-1-218	529	407	76.9%	352	112	31.8%	458	146	3.3
	DER-1-219	52	46	88.5%	39	11	28.2%	44	12	3.2
	DER-1-220	52	49	94.2%	45	30	66.7%	48	32	3.6
	DER-1-221	50	42	84.0%	39	19	48.7%	46	23	3.7
	DER-1-222	25	22	88.0%	22	19	86.4%	25	22	3.8
	Total Rifle	1,318	1,040	78.9%	903	353	39.1%	1,144	447	3.3
	DER-2-223	76	65	85.5%	48	12	25.0%	56	14	3.1
	DER-2-224	1	1	100.0%	1	1	100.0%	1	1	5.0
	DER-2-225	116	100	86.2%	84	13	15.5%	97	15	3.3
	DER-2-226	77	70	90.9%	44	4	9.1%	48	4	2.8
	DER-2-227	58	47	81.0%	43	12	27.9%	53	15	3.8
	DER-2-228	50	48	96.0%	41	9	22.0%	43	9	3.1
	Total Archery	378	331	87.6%	261	51	19.5%	298	58	3.2
	DER-3-229	446	373	83.6%	315	102	32.4%	377	122	3.1
	DER-3-230	48	43	89.6%	26	8	30.8%	29	9	3.3
	DER-3-231	52	45	86.5%	38	9	23.7%	44	10	2.9
	DER-3-232	50	45	90.0%	36	10	27.8%	40	11	3.2
	Total Muzzle	596	506	84.9%	415	129	31.1%	489	152	3.1
TOTAL	2,292	1,877	81.9%	1,579	533	33.8%	1,928	651	3.2	
24	DER-1-233	359	281	78.3%	257	107	41.6%	328	137	3.4
	DER-1-234	54	43	79.6%	25	8	32.0%	31	10	3.2
	DER-1-235	382	294	77.0%	257	79	30.7%	334	103	3.2
	DER-1-236	51	45	88.2%	21	7	33.3%	24	8	3.5
	DER-1-237	103	95	92.2%	90	66	73.3%	98	72	4.2
	Total Rifle	949	758	79.9%	650	267	41.1%	814	334	3.4
	DER-2-238	108	93	86.1%	87	39	44.8%	101	45	3.8
	DER-2-239	26	24	92.3%	19	4	21.1%	21	4	3.0
	DER-2-240	142	134	94.4%	119	47	39.5%	126	50	3.4
	DER-2-241	50	50	100.0%	33	13	39.4%	33	13	3.4
	Total Archery	326	301	92.3%	258	103	39.9%	279	112	3.5
	DER-3-242	312	276	88.5%	248	81	32.7%	280	92	3.4
	DER-3-243	50	44	88.0%	30	6	20.0%	34	7	3.0
	Total Muzzle	362	320	88.4%	278	87	31.3%	314	98	3.3
	TOTAL	1,637	1,379	84.2%	1,186	457	38.5%	1,408	543	3.4
25	DER-1-244	87	63	72.4%	54	21	38.9%	75	29	3.0
	DER-1-245	79	64	81.0%	57	21	36.8%	70	26	3.1
	Total Rifle	166	127	76.5%	111	42	37.8%	145	55	3.0
	DER-2-246	0	0	0.0%	0	0	0.0%	0	0	---
	DER-2-247	50	47	94.0%	37	6	16.2%	39	6	2.7
	Total Archery	50	47	94.0%	37	6	16.2%	39	6	2.7
	DER-3-248	37	31	83.8%	26	4	15.4%	31	5	2.2
	TOTAL	253	205	81.0%	174	52	29.9%	215	64	2.9

GMU	Hunt Code	Permits Issued	Total Returns	Response Rate	Reported		Success Rate	Estimated		Satisfaction Rating
					Hunters	Harvest		Hunters	Harvest	
26	DER-1-249	107	84	78.5%	70	26	37.1%	89	33	3.1
	DER-1-250	99	74	74.7%	66	21	31.8%	88	28	3.3
	Total Rifle	206	158	76.7%	136	47	34.6%	177	61	3.2
	DER-2-251	1	1	100.0%	0	0	0.0%	0	0	---
	DER-2-252	29	22	75.9%	17	3	17.6%	22	4	3.5
	Total Archery	30	23	76.7%	17	3	17.6%	22	4	3.5
	DER-3-253	83	59	71.1%	44	16	36.4%	62	23	3.2
TOTAL	319	240	75.2%	197	66	33.5%	262	88	3.2	
27	DER-1-254	39	26	66.7%	21	14	66.7%	32	21	3.4
	DER-1-255	26	24	92.3%	21	11	52.4%	23	12	4.0
	DER-1-256	44	31	70.5%	28	21	75.0%	40	30	4.1
	DER-1-257	30	23	76.7%	19	10	52.6%	25	13	3.7
	Total Rifle	139	104	74.8%	89	56	62.9%	119	75	3.8
	DER-2-258	29	25	86.2%	24	4	16.7%	28	5	3.9
	DER-2-259	31	30	96.8%	22	2	9.1%	23	2	3.5
	Total Archery	60	55	91.7%	46	6	13.0%	50	7	3.7
	DER-3-260	28	27	96.4%	23	8	34.8%	24	8	3.7
	DER-3-261	26	24	92.3%	20	8	40.0%	22	9	4.1
Total Muzzle	54	51	94.4%	43	16	37.2%	46	17	3.8	
TOTAL	253	210	83.0%	178	78	43.8%	214	94	3.8	
28	DER-1-262	10	9	90.0%	7	3	42.9%	8	3	3.3
	DER-1-263	10	10	100.0%	8	3	37.5%	8	3	3.4
	TOTAL	20	19	95.0%	15	6	40.0%	16	6	3.3
29	DER-1-264	171	140	81.9%	128	69	53.9%	156	84	3.7
	DER-1-265	168	152	90.5%	130	58	44.6%	144	64	3.4
	Total Rifle	339	292	86.1%	258	127	49.2%	300	147	3.6
	DER-2-266	210	172	81.9%	129	26	20.2%	158	32	3.3
	DER-3-267	53	46	86.8%	39	17	43.6%	45	20	3.6
TOTAL	602	510	84.7%	426	170	39.9%	503	201	3.5	
30	DER-1-268	1,123	915	81.5%	828	351	42.4%	1,016	431	3.5
	DER-1-269	1,619	1,322	81.7%	1,163	359	30.9%	1,424	440	3.2
	DER-1-270	249	209	83.9%	187	84	44.9%	223	100	3.4
	DER-1-271	255	216	84.7%	184	69	37.5%	217	81	3.2
	Total Rifle	3,246	2,662	82.0%	2,362	863	36.5%	2,880	1,052	3.3
	DER-2-272	344	287	83.4%	257	65	25.3%	308	78	3.6
	DER-3-273	511	452	88.5%	400	92	23.0%	452	104	3.1
TOTAL	4,101	3,401	82.9%	3,019	1,020	33.8%	3,640	1,230	3.3	
31	DER-1-274	552	397	71.9%	370	168	45.4%	514	234	3.5
	DER-1-275	560	423	75.5%	390	233	59.7%	516	308	3.7
	Total Rifle	1,112	820	73.7%	760	401	52.8%	1,031	544	3.6
	DER-2-276	254	209	82.3%	188	56	29.8%	228	68	3.8
	DER-3-277	149	122	81.9%	115	49	42.6%	140	60	3.6
TOTAL	1,515	1,151	76.0%	1,063	506	47.6%	1,399	666	3.6	
32	DER-1-278	829	634	76.5%	562	323	57.5%	735	422	3.5
	DER-1-279	850	643	75.6%	574	253	44.1%	759	334	3.4
	Total Rifle	1,679	1,277	76.1%	1,136	576	50.7%	1,494	757	3.5
	DER-2-280	292	222	76.0%	192	49	25.5%	253	64	3.8
	DER-3-281	156	127	81.4%	118	65	55.1%	145	80	3.5
TOTAL	2,127	1,626	76.4%	1,446	690	47.7%	1,892	903	3.5	

GMU	Hunt Code	Permits Issued	Total Returns	Response Rate	Reported		Success Rate	Estimated		Satisfaction Rating
					Hunters	Harvest		Hunters	Harvest	
33	DER-1-282	190	160	84.2%	151	76	50.3%	179	90	3.5
	DER-1-283	227	170	74.9%	150	84	56.0%	200	112	3.7
	Total Rifle	417	330	79.1%	301	160	53.2%	380	202	3.6
	DER-2-284	115	100	87.0%	82	20	24.4%	94	23	3.7
	DER-3-285	54	45	83.3%	34	15	44.1%	41	18	3.7
	TOTAL	586	475	81.1%	417	195	46.8%	514	241	3.6
31/33	DER-1-286	16	11	68.8%	11	8	72.7%	16	12	3.9
	DER-3-287	30	29	96.7%	29	24	82.8%	30	25	4.1
	DER-3-288	10	9	90.0%	9	5	55.6%	10	6	4.0
	Total Muzzle	40	38	95.0%	38	29	76.3%	40	31	4.1
	TOTAL	56	49	87.5%	49	37	75.5%	56	42	4.0
34	DER-1-289	1,366	1,095	80.2%	926	261	28.2%	1,155	326	3.2
	DER-1-290	1,395	1,087	77.9%	915	264	28.9%	1,174	339	3.3
	DER-1-291	56	40	71.4%	31	16	51.6%	43	22	3.3
	DER-1-292	53	48	90.6%	38	14	36.8%	42	15	3.6
	Total Rifle	2,870	2,270	79.1%	1,910	555	29.1%	2,415	702	3.3
	DER-2-293	876	764	87.2%	618	172	27.8%	709	197	3.3
	DER-3-294	375	321	85.6%	271	79	29.2%	317	92	3.3
	TOTAL	4,121	3,355	81.4%	2,799	806	28.8%	3,438	990	3.3
36	DER-1-295	394	270	68.5%	231	97	42.0%	337	142	3.4
	DER-1-296	384	311	81.0%	275	102	37.1%	340	126	3.4
	DER-1-297	32	27	84.4%	25	17	68.0%	30	20	3.8
	Total Rifle	810	608	75.1%	531	216	40.7%	707	288	3.4
	DER-2-298	303	258	85.1%	215	116	54.0%	253	136	3.7
	DER-3-299	88	64	72.7%	55	38	69.1%	76	52	3.8
	DER-3-300	27	23	85.2%	19	9	47.4%	22	11	3.5
	Total Muzzle	115	87	75.7%	74	47	63.5%	98	62	3.7
TOTAL	1,228	953	77.6%	820	379	46.2%	1,057	488	3.5	
37	DER-1-301	847	628	74.1%	566	208	36.7%	763	281	3.4
	DER-1-302	830	649	78.2%	589	237	40.2%	753	303	3.5
	Total Rifle	1,677	1,277	76.1%	1,155	445	38.5%	1,517	584	3.4
	DER-2-303	253	212	83.8%	184	56	30.4%	220	67	3.4
	DER-3-304	241	211	87.6%	182	41	22.5%	208	47	3.3
TOTAL	2,171	1,700	78.3%	1,521	542	35.6%	1,942	692	3.4	
38	DER-1-305	475	348	73.3%	312	85	27.2%	426	116	3.1
	DER-1-306	470	353	75.1%	310	85	27.4%	413	113	3.0
	Total Rifle	945	701	74.2%	622	170	27.3%	839	229	3.1
	DER-2-307	239	203	84.9%	157	35	22.3%	185	41	3.1
	DER-3-308	230	192	83.5%	168	46	27.4%	201	55	2.9
	TOTAL	1,414	1,096	77.5%	947	251	26.5%	1,222	324	3.0

GMU	Hunt Code	Permits Issued	Total Returns	Response Rate	Reported		Success Rate	Estimated		Satisfaction Rating
					Hunters	Harvest		Hunters	Harvest	
39	DER-1-309	156	107	68.6%	102	44	43.1%	149	64	3.4
	DER-1-310	174	110	63.2%	102	39	38.2%	161	62	3.2
	Total Rifle	330	217	65.8%	204	83	40.7%	310	126	3.3
	DER-2-311	72	59	81.9%	54	12	22.2%	66	15	3.0
	DER-3-312	65	55	84.6%	48	8	16.7%	57	9	2.8
	TOTAL	467	331	70.9%	306	103	33.7%	432	145	3.2
40	DER-1-313	188	107	56.9%	101	64	63.4%	177	112	3.4
	DER-1-314	181	104	57.5%	95	49	51.6%	165	85	3.7
	Total Rifle	369	211	57.2%	196	113	57.7%	343	198	3.6
	DER-2-315	60	50	83.3%	35	13	37.1%	42	16	3.0
	DER-3-316	30	22	73.3%	14	4	28.6%	19	5	2.4
	TOTAL	459	283	61.7%	245	130	53.1%	397	211	3.4
41	DER-1-317	80	56	70.0%	54	37	68.5%	77	53	4.1
	DER-1-318	101	65	64.4%	60	38	63.3%	93	59	4.0
	DER-1-319	19	15	78.9%	12	8	66.7%	15	10	3.1
	DER-1-320	20	14	70.0%	14	14	100.0%	20	20	4.6
	DER-1-321	15	14	93.3%	11	4	36.4%	12	4	3.0
	Total Rifle	235	164	69.8%	151	101	66.9%	216	145	3.9
	DER-2-322	13	12	92.3%	7	5	71.4%	8	5	3.1
	DER-3-323	34	23	67.6%	20	13	65.0%	30	19	4.2
	TOTAL	282	199	70.6%	178	119	66.9%	252	169	3.9
42	DER-1-324	184	97	52.7%	88	42	47.7%	167	80	3.4
	DER-1-325	186	91	48.9%	78	32	41.0%	159	65	3.0
	DER-1-326	35	24	68.6%	19	9	47.4%	28	13	3.6
	Total Rifle	405	212	52.3%	185	83	44.9%	353	159	3.3
	DER-2-327	15	12	80.0%	7	4	57.1%	9	5	4.4
	DER-3-328	11	11	100.0%	6	2	33.3%	6	2	2.8
TOTAL	431	235	54.5%	198	89	44.9%	363	163	3.3	
43	DER-1-329	72	51	70.8%	47	5	10.6%	66	7	2.4
	DER-1-330	82	54	65.9%	50	5	10.0%	76	8	2.6
	Total Rifle	154	105	68.2%	97	10	10.3%	142	15	2.5
	DER-2-331	26	17	65.4%	15	0	0.0%	23	0	2.3
	DER-3-332	12	10	83.3%	10	2	20.0%	12	2	2.7
TOTAL	192	132	68.8%	122	12	9.8%	177	17	2.5	
45	DER-1-333	300	234	78.0%	213	56	26.3%	273	72	3.2
	DER-1-334	300	247	82.3%	225	44	19.6%	273	53	2.9
	DER-1-335	32	26	81.3%	23	19	82.6%	28	23	4.3
	DER-1-336	27	24	88.9%	20	3	15.0%	23	3	2.8
	Total Rifle	659	531	80.6%	481	122	25.4%	597	151	3.1
	DER-2-337	123	107	87.0%	89	24	27.0%	102	28	3.3
	DER-3-338	119	110	92.4%	103	38	36.9%	111	41	3.2
	DER-3-339	44	38	86.4%	36	17	47.2%	42	20	3.3
	Total Muzzle	163	148	90.8%	139	55	39.6%	153	61	3.2
	TOTAL	945	786	83.2%	709	201	28.3%	852	242	3.2

GMU	Hunt Code	Permits Issued	Total Returns	Response Rate	Reported		Success Rate	Estimated		Satisfaction Rating
					Hunters	Harvest		Hunters	Harvest	
46 Private	DER-1-452	79	32	40.5%	32	16	50.0%	79	40	3.1
	DER-1-453	96	40	41.7%	38	14	36.8%	91	34	2.8
	Total Rifle	175	72	41.1%	70	30	42.9%	170	73	3.0
	DER-2-454	7	6	85.7%	6	3	50.0%	7	4	3.5
	DER-3-455	6	4	66.7%	4	2	50.0%	6	3	3.8
	TOTAL	188	82	43.6%	80	35	43.8%	183	80	3.0
47	DER-1-340	49	26	53.1%	21	11	52.4%	40	21	3.7
	DER-1-341	60	32	53.3%	27	9	33.3%	51	17	2.9
	Total Rifle	109	58	53.2%	48	20	41.7%	90	38	3.3
	DER-2-342	10	7	70.0%	5	0	0.0%	7	0	2.6
	DER-3-343	21	18	85.7%	16	5	31.3%	19	6	2.8
	TOTAL	140	83	59.3%	69	25	36.2%	116	42	3.1
48	DER-1-344	52	46	88.5%	40	15	37.5%	45	17	3.3
	DER-1-345	59	47	79.7%	40	11	27.5%	50	14	3.0
	Total Rifle	111	93	83.8%	80	26	32.5%	95	31	3.2
	DER-2-346	51	45	88.2%	39	9	23.1%	44	10	3.4
	TOTAL	162	138	85.2%	119	35	29.4%	140	41	3.2
49	DER-1-347	108	86	79.6%	81	18	22.2%	102	23	3.0
	DER-1-348	113	87	77.0%	85	23	27.1%	110	30	3.0
	Total Rifle	221	173	78.3%	166	41	24.7%	212	52	3.0
	DER-2-349	100	94	94.0%	79	19	24.1%	84	20	3.0
	TOTAL	321	267	83.2%	245	60	24.5%	295	72	3.0
50	DER-1-350	54	46	85.2%	40	12	30.0%	47	14	3.2
	DER-1-351	52	44	84.6%	39	19	48.7%	46	22	3.0
	Total Rifle	106	90	84.9%	79	31	39.2%	93	37	3.1
	DER-2-352	10	9	90.0%	9	0	0.0%	10	0	3.3
	TOTAL	116	99	85.3%	88	31	35.2%	103	36	3.1
51	DER-1-353	127	103	81.1%	95	32	33.7%	117	39	3.1
	DER-1-354	149	106	71.1%	101	41	40.6%	142	58	3.3
	Total Rifle	276	209	75.7%	196	73	37.2%	259	96	3.2
	DER-2-355	80	67	83.8%	45	10	22.2%	54	12	2.9
	TOTAL	356	276	77.5%	241	83	34.4%	311	107	3.1
52	DER-1-356	107	85	79.4%	76	25	32.9%	96	31	2.9
	DER-1-357	109	88	80.7%	80	27	33.8%	99	33	3.0
	Total Rifle	216	173	80.1%	156	52	33.3%	195	65	3.0
	DER-2-358	101	87	86.1%	71	17	23.9%	82	20	3.0
	DER-3-359	30	24	80.0%	21	2	9.5%	26	3	3.4
	TOTAL	347	284	81.8%	248	71	28.6%	303	87	3.0
53	DER-1-360	107	90	84.1%	86	27	31.4%	102	32	3.1
	DER-1-361	108	93	86.1%	83	29	34.9%	96	34	3.1
	Total Rifle	215	183	85.1%	169	56	33.1%	199	66	3.1
	DER-2-362	91	83	91.2%	70	16	22.9%	77	18	3.2
	TOTAL	306	266	86.9%	239	72	30.1%	275	83	3.1

GMU	Hunt Code	Permits Issued	Total Returns	Response Rate	Reported		Success Rate	Estimated		Satisfaction Rating
					Hunters	Harvest		Hunters	Harvest	
54 Private	DER-1-456	5	5	100.0%	5	5	100.0%	5	5	4.6
	DER-1-457	14	7	50.0%	7	5	71.4%	14	10	4.3
	DER-1-458	5	5	100.0%	5	2	40.0%	5	2	3.2
	Total Rifle	24	17	70.8%	17	12	70.6%	24	17	4.1
	DER-2-459	3	2	66.7%	2	1	50.0%	3	2	5.0
	DER-3-460	1	0	0.0%	0	0	0.0%	0	0	---
	TOTAL	28	19	67.9%	19	13	68.4%	28	19	4.2
55 Private	DER-1-461	27	16	59.3%	16	9	56.3%	27	15	3.7
	DER-1-462	53	29	54.7%	29	25	86.2%	53	46	4.6
	DER-1-465	7	7	100.0%	6	3	50.0%	6	3	4.2
	Total Rifle	87	52	59.8%	51	37	72.5%	85	62	4.3
	DER-2-463	30	4	13.3%	4	1	25.0%	30	8	4.8
	DER-3-464	0	0	0.0%	0	0	0.0%	0	0	---
	TOTAL	117	56	47.9%	55	38	69.1%	115	79	4.3
54/55 WMAs	DER-1-363	16	10	62.5%	9	6	66.7%	14	10	3.8
	DER-1-364	15	12	80.0%	10	4	40.0%	13	5	3.0
	TOTAL	31	22	71.0%	19	10	52.6%	27	14	3.4
55 WMAs	DER-1-365	6	5	83.3%	5	2	40.0%	6	2	2.6
	DER-1-366	6	5	83.3%	4	4	100.0%	5	5	4.3
	DER-1-367	10	7	70.0%	6	2	33.3%	9	3	2.8
	DER-1-368	11	8	72.7%	8	4	50.0%	11	6	2.9
	TOTAL	33	25	75.8%	23	12	52.2%	30	16	3.0
56	DER-1-369	39	22	56.4%	18	14	77.8%	32	25	4.3
	DER-1-370	39	28	71.8%	25	17	68.0%	35	24	4.2
	DER-1-371	12	12	100.0%	12	9	75.0%	12	9	3.8
	Total Rifle	90	62	68.9%	55	40	72.7%	80	58	4.1
	DER-2-372	10	9	90.0%	6	2	33.3%	7	2	4.0
	DER-3-373	14	11	78.6%	11	6	54.5%	14	8	3.3
	TOTAL	114	82	71.9%	72	48	66.7%	100	67	4.0
57	DER-1-374	72	46	63.9%	43	26	60.5%	67	41	4.0
	DER-1-375	91	58	63.7%	56	34	60.7%	88	53	4.1
	DER-1-376	16	13	81.3%	10	3	30.0%	12	4	2.8
	DER-1-377	23	18	78.3%	14	13	92.9%	18	17	4.2
	Total Rifle	202	135	66.8%	123	76	61.8%	184	114	4.0
	DER-2-378	26	21	80.8%	16	2	12.5%	20	2	3.5
	DER-2-379	40	38	95.0%	31	12	38.7%	33	13	4.2
	Total Archery	66	59	89.4%	47	14	29.8%	53	16	4.0
	DER-3-380	25	14	56.0%	12	9	75.0%	21	16	4.3
	TOTAL	293	208	71.0%	182	99	54.4%	256	139	4.0

GMU	Hunt Code	Permits Issued	Total Returns	Response Rate	Reported		Success Rate	Estimated		Satisfaction Rating
					Hunters	Harvest		Hunters	Harvest	
58	DER-1-381	92	48	52.2%	47	27	57.4%	90	52	3.7
	DER-1-382	76	57	75.0%	54	34	63.0%	72	45	3.8
	DER-1-383	12	7	58.3%	6	2	33.3%	10	3	2.3
	DER-1-384	22	10	45.5%	8	8	100.0%	18	18	4.5
	DER-1-385	14	11	78.6%	10	3	30.0%	13	4	2.0
	Total Rifle	216	133	61.6%	125	74	59.2%	203	120	3.6
	DER-2-386	16	14	87.5%	13	2	15.4%	15	2	3.1
	DER-3-387	16	13	81.3%	11	10	90.9%	14	12	3.5
	TOTAL	248	160	64.5%	149	86	57.7%	231	133	3.5
59	DER-1-388	66	37	56.1%	35	22	62.9%	62	39	3.7
	DER-1-389	72	47	65.3%	44	22	50.0%	67	34	3.7
	DER-1-390	25	20	80.0%	18	3	16.7%	23	4	2.8
	DER-1-391	11	6	54.5%	6	6	100.0%	11	11	3.8
	DER-1-392	18	12	66.7%	10	4	40.0%	15	6	2.9
	Total Rifle	192	122	63.5%	113	57	50.4%	178	90	3.5
	DER-2-393	8	7	87.5%	3	0	0.0%	3	0	2.3
	DER-3-394	28	22	78.6%	14	9	64.3%	18	11	2.9
	TOTAL	228	151	66.2%	130	66	50.8%	196	100	3.4

Table 2. 2009-2010 New Mexico Deer Harvest Report--Unit Summary (All Sporting Arms); NMDGF

GMU	Permits Issued	Total Returns	Response Rate	Reported		Success Rate	Estimated		Satisfaction Rating
				Hunters	Harvest		Hunters	Harvest	
2A	462	401	86.8%	349	138	39.5%	402	159	3.2
2B	1,996	1,741	87.2%	1,588	844	53.1%	1,821	968	3.8
2C	125	108	86.4%	103	58	56.3%	119	67	3.9
4 WMAs	57	52	91.2%	47	25	53.2%	52	27	3.1
4 (private)	415	291	70.1%	247	122	49.4%	352	174	3.7
5A	319	242	75.9%	224	115	51.3%	295	152	4.0
5B	57	56	98.2%	51	41	80.4%	52	42	4.2
6A&C	469	372	79.3%	334	113	33.8%	421	142	3.2
7	90	59	65.6%	55	29	52.7%	84	44	3.2
8	108	89	82.4%	77	15	19.5%	93	18	3.1
9	86	66	76.7%	63	20	31.7%	82	26	3.2
10	606	501	82.7%	450	129	28.7%	544	156	3.3
12	410	310	75.6%	231	45	19.5%	306	60	2.7
13	2,023	1,638	81.0%	1,367	220	16.1%	1,688	272	2.9
14	127	103	81.1%	92	31	33.7%	113	38	3.3
15	564	510	90.4%	396	87	22.0%	438	96	2.9
16	1,453	1,232	84.8%	1,006	283	28.1%	1,186	334	3.2
17	1,099	946	86.1%	835	280	33.5%	970	325	3.4
18	490	404	82.4%	362	73	20.2%	439	89	2.8
19	10	10	100.0%	8	5	62.5%	8	5	3.8
20	370	318	85.9%	246	66	26.8%	286	77	2.9
21	2,048	1,692	82.6%	1,422	391	27.5%	1,721	473	3.2
22	377	313	83.0%	238	70	29.4%	287	84	3.1
23	2,292	1,877	81.9%	1,579	533	33.8%	1,928	651	3.2
24	1,637	1,379	84.2%	1,186	457	38.5%	1,408	543	3.4
25	253	205	81.0%	174	52	29.9%	215	64	2.9
26	319	240	75.2%	197	66	33.5%	262	88	3.2
27	253	210	83.0%	178	78	43.8%	214	94	3.8
28	20	19	95.0%	15	6	40.0%	16	6	3.3
29	602	510	84.7%	426	170	39.9%	503	201	3.5
30	4,101	3,401	82.9%	3,019	1,020	33.8%	3,640	1,230	3.3
31	1,515	1,151	76.0%	1,063	506	47.6%	1,399	666	3.6
32	2,127	1,626	76.4%	1,446	690	47.7%	1,892	903	3.5
33	586	475	81.1%	417	195	46.8%	514	241	3.6
31/33	56	49	87.5%	49	37	75.5%	56	42	4.0
34	4,121	3,355	81.4%	2,799	806	28.8%	3,438	990	3.3
36	1,228	953	77.6%	820	379	46.2%	1,057	488	3.5
37	2,171	1,700	78.3%	1,521	542	35.6%	1,942	692	3.4
38	1,414	1,096	77.5%	947	251	26.5%	1,222	324	3.0
39	467	331	70.9%	306	103	33.7%	432	145	3.2
40	459	283	61.7%	245	130	53.1%	397	211	3.4
41	282	199	70.6%	178	119	66.9%	252	169	3.9
42	431	235	54.5%	198	89	44.9%	363	163	3.3
43	192	132	68.8%	122	12	9.8%	177	17	2.5
45	945	786	83.2%	709	201	28.3%	852	242	3.2
46 (private)	188	82	43.6%	80	35	43.8%	183	80	3.0
47	140	83	59.3%	69	25	36.2%	116	42	3.1
48	162	138	85.2%	119	35	29.4%	140	41	3.2
49	321	267	83.2%	245	60	24.5%	295	72	3.0

GMU	Permits Issued	Total Returns	Response Rate	Reported		Success Rate	Estimated		Satisfaction Rating
				Hunters	Harvest		Hunters	Harvest	
50	116	99	85.3%	88	31	35.2%	103	36	3.1
51	356	276	77.5%	241	83	34.4%	311	107	3.1
52	347	284	81.8%	248	71	28.6%	303	87	3.0
53	306	266	86.9%	239	72	30.1%	275	83	3.1
54 (private)	28	19	67.9%	19	13	68.4%	28	19	4.2
55 (private)	117	56	47.9%	55	38	69.1%	115	79	4.3
54/55 WMA	31	22	71.0%	19	10	52.6%	27	14	3.4
55 WMAs	33	25	75.8%	23	12	52.2%	30	16	3.0
56	114	82	71.9%	72	48	66.7%	100	67	4.0
57	293	208	71.0%	182	99	54.4%	256	139	4.0
58	248	160	64.5%	149	86	57.7%	231	133	3.5
59	228	151	66.2%	130	66	50.8%	196	100	3.4
Incentive Enhancement	94	42	44.7%	40	27	67.5%	90	60	4.2
Depredation	4	4	100.0%	4	4	100.0%	4	4	4.8
Unknown*	12		0.0%			0.0%	0	0	---
	248						132	70	---
TOTAL	42,618	33,930	79.6%	29,407	10,457	35.6%	37,069	13,205	3.3

* Unknowns are private land-only permits issued to invalide huntcodes or with incomplete data to assign to a huntcode. Estimates for Unknowns are calculated using the overall private land-only participation rate and success rate from usable responses.

Table 3. 2009-2010 New Mexico Deer Harvest Report--Unit Summary (Sporting Arm-Rifle); NMDGF

GMU	Permits	Total	Response	Reported		Success	Estimated		Satisfaction
	Issued	Returns	Rate	Hunters	Harvest	Rate	Hunters	Harvest	Rating
2A	272	237	87.1%	207	93	44.9%	238	107	3.1
2B	1,409	1,223	86.8%	1,130	746	66.0%	1,302	859	4.0
2C	32	26	81.3%	25	19	76.0%	31	23	4.3
4 (WMAs)	57	52	91.2%	47	25	53.2%	52	27	3.1
4 (private)	301	210	69.8%	175	93	53.1%	251	133	3.7
5A	231	169	73.2%	161	97	60.2%	220	133	4.0
5B	57	56	98.2%	51	41	80.4%	52	42	4.2
6A&C	256	193	75.4%	176	58	33.0%	233	77	3.1
7	69	44	63.8%	42	24	57.1%	66	38	3.5
8	3	3	100.0%	2	0	0.0%	2	0	2.0
9	61	45	73.8%	45	16	35.6%	61	22	3.4
10	370	297	80.3%	267	89	33.3%	333	111	3.3
12	245	179	73.1%	144	30	20.8%	197	41	2.9
13	1,199	912	76.1%	792	157	19.8%	1,041	206	3.1
14	49	35	71.4%	31	11	35.5%	43	15	3.3
16	746	614	82.3%	513	183	35.7%	623	222	3.4
17	493	423	85.8%	387	198	51.2%	451	231	3.5
18	282	212	75.2%	195	40	20.5%	259	53	2.7
20	218	181	83.0%	143	41	28.7%	172	49	3.0
21	1,272	997	78.4%	851	275	32.3%	1,086	351	3.3
22	229	182	79.5%	146	44	30.1%	184	55	3.0
23	1,318	1,040	78.9%	903	353	39.1%	1,144	447	3.3
24	949	758	79.9%	650	267	41.1%	814	334	3.4
25	166	127	76.5%	111	42	37.8%	145	55	3.0
26	206	158	76.7%	136	47	34.6%	177	61	3.2
27	139	104	74.8%	89	56	62.9%	119	75	3.8
28	20	19	95.0%	15	6	40.0%	16	6	3.3
29	339	292	86.1%	258	127	49.2%	300	147	3.6
30	3,246	2,662	82.0%	2,362	863	36.5%	2,880	1,052	3.3
31	1,112	820	73.7%	760	401	52.8%	1,031	544	3.6
32	1,679	1,277	76.1%	1,136	576	50.7%	1,494	757	3.5
33	417	330	79.1%	301	160	53.2%	380	202	3.6
31/33	16	11	68.8%	11	8	72.7%	16	12	3.9
34	2,870	2,270	79.1%	1,910	555	29.1%	2,415	702	3.3
36	810	608	75.1%	531	216	40.7%	707	288	3.4
37	1,677	1,277	76.1%	1,155	445	38.5%	1,517	584	3.4
38	945	701	74.2%	622	170	27.3%	839	229	3.1
39	330	217	65.8%	204	83	40.7%	310	126	3.3
40	369	211	57.2%	196	113	57.7%	343	198	3.6
41	235	164	69.8%	151	101	66.9%	216	145	3.9
42	405	212	52.3%	185	83	44.9%	353	159	3.3
43	154	105	68.2%	97	10	10.3%	142	15	2.5
45	659	531	80.6%	481	122	25.4%	597	151	3.1
46 (private)	175	72	41.1%	70	30	42.9%	170	73	3.0
47	109	58	53.2%	48	20	41.7%	90	38	3.3
48	111	93	83.8%	80	26	32.5%	95	31	3.2
49	221	173	78.3%	166	41	24.7%	212	52	3.0
50	106	90	84.9%	79	31	39.2%	93	37	3.1
51	276	209	75.7%	196	73	37.2%	259	96	3.2

GMU	Permits Issued	Total Returns	Response Rate	Reported		Success Rate	Estimated		Satisfaction Rating
				Hunters	Harvest		Hunters	Harvest	
52	216	173	80.1%	156	52	33.3%	195	65	3.0
53	215	183	85.1%	169	56	33.1%	199	66	3.1
54 (private)	24	17	70.8%	17	12	70.6%	24	17	4.1
55 (private)	87	52	59.8%	51	37	72.5%	85	62	4.3
54/55 (WMA)	31	22	71.0%	19	10	52.6%	27	14	3.4
55 (WMAs)	33	25	75.8%	23	12	52.2%	30	16	3.0
56	90	62	68.9%	55	40	72.7%	80	58	4.1
57	202	135	66.8%	123	76	61.8%	184	114	4.0
58	216	133	61.6%	125	74	59.2%	203	120	3.6
59	192	122	63.5%	113	57	50.4%	178	90	3.5
TOTAL	28,216	21,803	77.3%	19,284	7,731	40.1%	24,956	10,005	3.4

Table 4. 2009-2010 New Mexico Deer Harvest Report--Unit Summary (Sporting Arm-Bow); NMDGF

GMU	Permits Issued	Total Returns	Response Rate	Reported		Success Rate	Estimated		Satisfaction Rating
				Hunters	Harvest		Hunters	Harvest	
2A	128	112	87.5%	96	28	29.2%	110	32	3.2
2B	388	343	88.4%	309	61	19.7%	350	69	3.3
2C	66	58	87.9%	56	28	50.0%	64	32	3.6
4 (private)	57	40	70.2%	34	8	23.5%	48	11	3.9
5A	88	73	83.0%	63	18	28.6%	76	22	4.0
6A&C	106	90	84.9%	75	18	24.0%	88	21	3.3
7	11	8	72.7%	6	3	50.0%	8	4	2.5
8	102	84	82.4%	73	14	19.2%	89	17	3.2
9	12	9	75.0%	8	2	25.0%	11	3	3.0
10	132	117	88.6%	103	11	10.7%	116	12	3.1
12	82	69	84.1%	37	3	8.1%	44	4	2.0
13	313	279	89.1%	186	12	6.5%	209	13	2.8
14	27	24	88.9%	23	5	21.7%	26	6	3.2
15	206	181	87.9%	125	10	8.0%	142	11	2.7
16	404	349	86.4%	259	46	17.8%	300	53	3.0
17	402	341	84.8%	286	40	14.0%	337	47	3.3
18	107	100	93.5%	87	11	12.6%	93	12	2.7
20	50	43	86.0%	33	6	18.2%	38	7	2.8
21	265	237	89.4%	184	42	22.8%	206	47	3.6
22	46	40	87.0%	24	7	29.2%	28	8	3.4
23	378	331	87.6%	261	51	19.5%	298	58	3.2
24	326	301	92.3%	258	103	39.9%	279	112	3.5
25	50	47	94.0%	37	6	16.2%	39	6	2.7
26	30	23	76.7%	17	3	17.6%	22	4	3.5
27	60	55	91.7%	46	6	13.0%	50	7	3.7
29	210	172	81.9%	129	26	20.2%	158	32	3.3
30	344	287	83.4%	257	65	25.3%	308	78	3.6
31	254	209	82.3%	188	56	29.8%	228	68	3.8
32	292	222	76.0%	192	49	25.5%	253	64	3.8
33	115	100	87.0%	82	20	24.4%	94	23	3.7
34	876	764	87.2%	618	172	27.8%	709	197	3.3
36	303	258	85.1%	215	116	54.0%	253	136	3.7
37	253	212	83.8%	184	56	30.4%	220	67	3.4
38	239	203	84.9%	157	35	22.3%	185	41	3.1
39	72	59	81.9%	54	12	22.2%	66	15	3.0
40	60	50	83.3%	35	13	37.1%	42	16	3.0
41	13	12	92.3%	7	5	71.4%	8	5	3.1
42	15	12	80.0%	7	4	57.1%	9	5	4.4
43	26	17	65.4%	15	0	0.0%	23	0	2.3
45	123	107	87.0%	89	24	27.0%	102	28	3.3
46 (private)	7	6	85.7%	6	3	50.0%	7	4	3.5
47	10	7	70.0%	5	0	0.0%	7	0	2.6
48	51	45	88.2%	39	9	23.1%	44	10	3.4
49	100	94	94.0%	79	19	24.1%	84	20	3.0
50	10	9	90.0%	9	0	0.0%	10	0	3.3
51	80	67	83.8%	45	10	22.2%	54	12	2.9
52	101	87	86.1%	71	17	23.9%	82	20	3.0

GMU	Permits Issued	Total Returns	Response Rate	Reported		Success Rate	Estimated		Satisfaction Rating
				Hunters	Harvest		Hunters	Harvest	
53	91	83	91.2%	70	16	22.9%	77	18	3.2
54 (private)	3	2	66.7%	2	1	50.0%	3	2	5.0
55 (private)	30	4	13.3%	4	1	25.0%	30	8	4.8
56	10	9	90.0%	6	2	33.3%	7	2	4.0
57	66	59	89.4%	47	14	29.8%	53	16	4.0
58	16	14	87.5%	13	2	15.4%	15	2	3.1
59	8	7	87.5%	3	0	0.0%	3	0	2.3
TOTAL	7,614	6,531	85.8%	5,314	1,289	24.3%	6,195	1,503	3.3

Table 5. 2009-2010 New Mexico Deer Harvest Report--Unit Summary (Sporting Arm-Muzzleloader); NMDGF.

GMU	Permits	Total	Response	Reported		Success	Estimated		Satisfaction
	Issued	Returns	Rate	Hunters	Harvest	Rate	Hunters	Harvest	Rating
2A	62	52	83.9%	46	17	37.0%	55	20	3.3
2B	199	175	87.9%	149	37	24.8%	169	42	3.1
2C	27	24	88.9%	22	11	50.0%	25	12	4.4
4 (private)	57	41	71.9%	38	21	55.3%	53	29	3.5
6A&C	107	89	83.2%	83	37	44.6%	100	44	3.3
7	10	7	70.0%	7	2	28.6%	10	3	2.3
8	3	2	66.7%	2	1	50.0%	3	2	2.0
9	13	12	92.3%	10	2	20.0%	11	2	2.5
10	104	87	83.7%	80	29	36.3%	96	35	3.5
12	83	62	74.7%	50	12	24.0%	67	16	2.8
13	511	447	87.5%	389	51	13.1%	445	58	2.6
14	51	44	86.3%	38	15	39.5%	44	17	3.3
15	358	329	91.9%	271	77	28.4%	295	84	2.9
16	303	269	88.8%	234	54	23.1%	264	61	3.0
17	204	182	89.2%	162	42	25.9%	182	47	3.5
18	101	92	91.1%	80	22	27.5%	88	24	2.9
19	10	10	100.0%	8	5	62.5%	8	5	3.8
20	102	94	92.2%	70	19	27.1%	76	21	2.7
21	511	458	89.6%	387	74	19.1%	432	83	2.8
22	102	91	89.2%	68	19	27.9%	76	21	3.0
23	596	506	84.9%	415	129	31.1%	489	152	3.1
24	362	320	88.4%	278	87	31.3%	314	98	3.3
25	37	31	83.8%	26	4	15.4%	31	5	2.2
26	83	59	71.1%	44	16	36.4%	62	23	3.2
27	54	51	94.4%	43	16	37.2%	46	17	3.8
29	53	46	86.8%	39	17	43.6%	45	20	3.6
30	511	452	88.5%	400	92	23.0%	452	104	3.1
31	149	122	81.9%	115	49	42.6%	140	60	3.6
32	156	127	81.4%	118	65	55.1%	145	80	3.5
33	54	45	83.3%	34	15	44.1%	41	18	3.7
31/33	40	38	95.0%	38	29	76.3%	40	31	4.1
34	375	321	85.6%	271	79	29.2%	317	92	3.3
36	115	87	75.7%	74	47	63.5%	98	62	3.7
37	241	211	87.6%	182	41	22.5%	208	47	3.3
38	230	192	83.5%	168	46	27.4%	201	55	2.9
39	65	55	84.6%	48	8	16.7%	57	9	2.8
40	30	22	73.3%	14	4	28.6%	19	5	2.4
41	34	23	67.6%	20	13	65.0%	30	19	4.2
42	11	11	100.0%	6	2	33.3%	6	2	2.8
43	12	10	83.3%	10	2	20.0%	12	2	2.7
45	163	148	90.8%	139	55	39.6%	153	61	3.2
46 (private)	6	4	66.7%	4	2	50.0%	6	3	3.8
47	21	18	85.7%	16	5	31.3%	19	6	2.8
52	30	24	80.0%	21	2	9.5%	26	3	3.4
54 (private)	1	0	0.0%	0	0	0.0%	0	0	---
55 (private)	0	0	0.0%	0	0	0.0%	0	0	---
56	14	11	78.6%	11	6	54.5%	14	8	3.3

GMU	Permits Issued	Total Returns	Response Rate	Reported		Success Rate	Estimated		Satisfaction Rating
				Hunters	Harvest		Hunters	Harvest	
57	25	14	56.0%	12	9	75.0%	21	16	4.3
58	16	13	81.3%	11	10	90.9%	14	12	3.5
59	28	22	78.6%	14	9	64.3%	18	11	2.9
TOTAL	6,430	5,550	86.3%	4,765	1,406	29.5%	5,521	1,629	3.1

Table 6. 2009-2010 New Mexico Deer Harvest Report--Coues White-tailed Deer Summary; NMDGF.

GMU	Weapon Type	Permits Issued	Total Returns	Response Rate	Reported		Success Rate	Estimated	
					Hunters	Harvest		Hunters	Harvest
23	Rifle	156	131	84.0%	112	47	42.0%	133	56
	Archery	128	119	93.0%	86	14	16.3%	93	15
	Muzzle-loader	98	88	89.8%	62	18	29.0%	69	20
	Total	382	338	88.5%	260	79	30.4%	294	89
24	Rifle	105	88	83.8%	46	15	32.6%	55	18
	Archery	76	74	97.4%	52	17	32.7%	53	17
	Muzzle-loader	50	44	88.0%	30	6	20.0%	34	7
	Total	231	206	89.2%	128	38	29.7%	144	43
27	Rifle	56	47	83.9%	40	21	52.5%	48	25
	Archery	31	30	96.8%	22	2	9.1%	23	2
	Muzzle-loader	26	24	92.3%	20	8	40.0%	22	9
	Total	113	101	89.4%	82	31	37.8%	92	35
TOTAL		726	645	88.8%	470	148	31.5%	529	167

Table 7. 2009-2010 New Mexico Deer Harvest Report--Texas White-tailed Deer Summary; NMDGF.

GMU	Weapon Type (Rifle)	Permits Issued	Total Returns	Response Rate	Reported		Success Rate	Estimated	
					Hunters	Harvest		Hunters	Harvest
41		34	29	85.3%	23	12	52.2%	27	14
42		35	24	68.6%	19	9	47.4%	28	13
54 (private)		5	5	100.0%	5	2	40.0%	5	2
55B (private)		7	7	100.0%	6	3	50.0%	6	3
57		16	13	81.3%	10	3	30.0%	12	4
58		26	18	69.2%	16	5	31.3%	23	7
59		43	32	74.4%	28	7	25.0%	38	9
TOTAL		166	128	77.1%	107	41	38.3%	139	53

Table 8. 2009-2010 New Mexico Deer Harvest Report--Sporting Arms Summary; NMDGF

Sporting Arm	Permits Issued	Proportion of Total	Reported Hunters	Proportion of Total	Reported Harvest	Proportion of Total	Success Rate
Rifle	28,216	66.8%	19,284	65.7%	7,731	74.2%	40.1%
Archery	7,614	18.0%	5,314	18.1%	1,289	12.4%	24.3%
Muzzle-loader	6,430	15.2%	4,765	16.2%	1,406	13.5%	29.5%

Table 9. 2009-2010 New Mexico Deer Harvest Report--Youth Only Summary; NMDGF

Sporting Arm	Permits Issued	Total Returns	Response Rate	Reported		Success Rate	Estimated	
				Hunters	Harvest		Hunters	Harvest
Rifle	1,611	1,358	84.3%	1,216	663	54.5%	1,443	787
Archery	118	99	83.9%	88	20	22.7%	105	24
Muzzle-loader	188	176	93.6%	153	72	47.1%	163	77
TOTAL	1,917	1,633	85.2%	1,457	755	51.8%	1,710	886

Table 10. 2009-2010 New Mexico Deer Harvest Report--Mobility Impaired Summary; NMDGF

	Permits Issued	Total Returns	Response Rate	Reported		Success Rate	Estimated	
				Hunters	Harvest		Hunters	Harvest
	150	133	88.7%	105	34	32.4%	118	38

Table 11. 2009-2010 Deer Harvest Report--Public vs. Private Land Summary; NMDGF.

	Permits Issued	Total Returns	Response Rate	Reported		Success Rate	Estimated	
				Hunters	Harvest		Hunters	Harvest
Rifle								
Public Land	21,836	18,278	83.7%	15,902	5,854	36.8%	18,997	6,994
Private Land	6,380	3,525	55.3%	3,382	1,877	55.5%	6,121	3,397
Archery								
Public Land	6,767	5,930	87.6%	4,745	1,068	22.5%	5,415	1,219
Private Land	847	601	71.0%	569	221	38.8%	802	311
Muzzle-loader								
Public Land	6,021	5,306	88.1%	4,535	1,288	28.4%	5,146	1,462
Private Land	409	244	59.7%	230	118	51.3%	386	198
Tot. Public Land	34,624	29,514	85.2%	25,182	8,210	32.6%	29,542	9,631
Tot. Private Land	7,636	4,370	57.2%	4,181	2,216	53.0%	7,306	3,872
TOTAL	42,260	33,884	80.2%	29,363	10,426	35.5%	36,753	13,073

Table 12. 2009-2010 New Mexico Deer Harvest Report--Hunt Code Summary (Draw Permits); NMDGF.

GMU	Hunt Code	Permits Issued	Total Returns	Response Rate	Reported		Success Rate	Estimated	
					Hunters	Harvest		Hunters	Harvest
2A	DER-1-100	200	178	89.0%	154	64	41.6%	173	72
	DER-1-101	50	45	90.0%	42	22	52.4%	47	24
	DER-1-102	17	14	82.4%	11	7	63.6%	13	9
	Total Rifle	267	237	88.8%	207	93	44.9%	233	105
	DER-2-103	40	33	82.5%	27	4	14.8%	33	5
	DER-2-104	80	74	92.5%	64	22	34.4%	69	24
	DER-2-105	2	2	100.0%	2	1	50.0%	2	1
	DER-2-106	4	3	75.0%	3	1	33.3%	4	1
	Total Archery	126	112	88.9%	96	28	29.2%	108	32
	DER-3-107	60	51	85.0%	45	16	35.6%	53	19
	DER-3-108	1	1	100.0%	1	1	100.0%	1	1
	Total Muzzle	61	52	85.2%	46	17	37.0%	54	20
	TOTAL	454	401	88.3%	349	138	39.5%	395	156
2B	DER-1-109	300	244	81.3%	217	152	70.0%	267	187
	DER-1-110	390	342	87.7%	315	211	67.0%	359	241
	DER-1-111	466	425	91.2%	404	275	68.1%	443	302
	DER-1-112	150	139	92.7%	122	65	53.3%	132	70
	DER-1-113	19	17	89.5%	16	7	43.8%	18	8
	DER-1-114	10	10	100.0%	10	8	80.0%	10	8
	DER-1-115	57	46	80.7%	46	28	60.9%	57	35
	Total Rifle	1,392	1,223	87.9%	1,130	746	66.0%	1,286	849
	DER-2-116	130	115	88.5%	103	9	8.7%	116	10
	DER-2-117	180	165	91.7%	150	41	27.3%	164	45
	DER-2-118	19	16	84.2%	13	0	0.0%	15	0
	DER-2-119	49	39	79.6%	37	11	29.7%	46	14
	DER-2-120	3	3	100.0%	2	0	0.0%	2	0
	DER-2-121	5	5	100.0%	4	0	0.0%	4	0
	Total Archery	386	343	88.9%	309	61	19.7%	348	69
	DER-3-122	175	152	86.9%	130	31	23.8%	150	36
	DER-3-123	20	19	95.0%	15	4	26.7%	16	4
	DER-3-124	4	4	100.0%	4	2	50.0%	4	2
	Total Muzzle	199	175	87.9%	149	37	24.8%	169	42
TOTAL	1,977	1,741	88.1%	1,588	844	53.1%	1,803	958	
2C	DER-1-125	23	20	87.0%	19	13	68.4%	22	15
	DER-1-126	8	6	75.0%	6	6	100.0%	8	8
	Total Rifle	31	26	83.9%	25	19	76.0%	30	23
	DER-2-127	66	58	87.9%	56	28	50.0%	64	32
	DER-2-128	0	0	0.0%	0	0	0.0%	0	0
	Total Archery	66	58	87.9%	56	28	50.0%	64	32
	DER-3-129	27	24	88.9%	22	11	50.0%	25	12
	DER-3-130	0	0	0.0%	0	0	0.0%	0	0
Total Muzzle	27	24	88.9%	22	11	50.0%	25	12	
TOTAL	124	108	87.1%	103	58	56.3%	118	67	

GMU	Hunt Code	Permits Issued	Total Returns	Response Rate	Reported		Success Rate	Estimated	
					Hunters	Harvest		Hunters	Harvest
4 WMAs	DER-1-131	20	19	95.0%	16	4	25.0%	17	4
	DER-1-132	20	19	95.0%	18	13	72.2%	19	14
	DER-1-133	10	9	90.0%	8	3	37.5%	9	3
	DER-1-134	5	5	100.0%	5	5	100.0%	5	5
	TOTAL	55	52	94.5%	47	25	53.2%	50	26
4 Private	DER-1-135	137	108	78.8%	88	47	53.4%	112	60
	DER-1-136	127	102	80.3%	87	46	52.9%	108	57
	Total Rifle	264	210	79.5%	175	93	53.1%	220	117
	DER-2-137	54	40	74.1%	34	8	23.5%	46	11
	DER-3-138	52	41	78.8%	38	21	55.3%	48	27
	TOTAL	370	291	78.6%	247	122	49.4%	314	155
5A Public	DER-1-139	30	27	90.0%	26	17	65.4%	29	19
	DER-2-141	30	26	86.7%	25	6	24.0%	29	7
	TOTAL	60	53	88.3%	51	23	45.1%	58	26
5A Private	DER-1-140	176	142	80.7%	135	80	59.3%	167	99
	DER-2-142	54	47	87.0%	38	12	31.6%	44	14
	TOTAL	230	189	82.2%	173	92	53.2%	211	112
5B	DER-1-143	15	14	93.3%	14	14	100.0%	15	15
	DER-1-144	10	10	100.0%	10	9	90.0%	10	9
	TOTAL	25	24	96.0%	24	23	95.8%	25	24
6 A&C	DER-1-145	101	90	89.1%	82	25	30.5%	92	28
	DER-1-146	20	17	85.0%	13	7	53.8%	15	8
	Total Rifle	121	107	88.4%	95	32	33.7%	107	36
	DER-2-147	100	86	86.0%	71	18	25.4%	83	21
	DER-3-148	100	85	85.0%	79	34	43.0%	93	40
	TOTAL	321	278	86.6%	245	84	34.3%	283	97
7	DER-1-149	25	21	84.0%	20	13	65.0%	24	15
	DER-2-150	10	7	70.0%	5	2	40.0%	7	3
	DER-3-151	10	7	70.0%	7	2	28.6%	10	3
	TOTAL	45	35	77.8%	32	17	53.1%	41	22
8	DER-1-450								
	DER-2-152	50	38	76.0%	33	4	12.1%	43	5
	DER-2-153	50	44	88.0%	38	9	23.7%	43	10
	Total Archery	100	82	82.0%	71	13	18.3%	87	16
	DER-3-451								
TOTAL	100	82	82.0%	71	13	18.3%	87	16	
9	DER-1-154	10	10	100.0%	10	5	50.0%	10	5
	DER-1-155	10	10	100.0%	10	5	50.0%	10	5
	Total Rifle	20	20	100.0%	20	10	50.0%	20	10
	DER-2-156	10	8	80.0%	7	2	28.6%	9	3
	DER-3-157	10	10	100.0%	9	2	22.2%	9	2
	TOTAL	40	38	95.0%	36	14	38.9%	38	15

GMU	Hunt Code	Permits Issued	Total Returns	Response Rate	Reported		Success Rate	Estimated	
					Hunters	Harvest		Hunters	Harvest
10	DER-1-158	70	65	92.9%	60	15	25.0%	65	16
	DER-1-159	65	55	84.6%	49	17	34.7%	58	20
	DER-1-160	90	68	75.6%	56	13	23.2%	74	17
	DER-1-161	25	21	84.0%	19	8	42.1%	23	10
	DER-1-162	20	20	100.0%	17	3	17.6%	17	3
	Total Rifle	270	229	84.8%	201	56	27.9%	237	66
	DER-2-163	120	106	88.3%	92	10	10.9%	104	11
	DER-3-164	90	77	85.6%	70	27	38.6%	82	32
	TOTAL	480	412	85.8%	363	93	25.6%	423	108
12	DER-1-165	200	146	73.0%	112	17	15.2%	153	23
	DER-2-166	75	64	85.3%	33	1	3.0%	39	1
	DER-3-167	75	60	80.0%	48	11	22.9%	60	14
	TOTAL	350	270	77.1%	193	29	15.0%	250	38
13	DER-1-168	500	399	79.8%	345	54	15.7%	432	68
	DER-1-169	500	371	74.2%	317	43	13.6%	427	58
	DER-1-170	100	84	84.0%	79	41	51.9%	94	49
	Total Rifle	1,100	854	77.6%	741	138	18.6%	954	178
	DER-2-171	150	130	86.7%	79	4	5.1%	91	5
	DER-2-172	150	139	92.7%	98	6	6.1%	106	6
	Total Archery	300	269	89.7%	177	10	5.6%	197	11
	DER-3-173	500	439	87.8%	381	49	12.9%	434	56
	TOTAL	1,900	1,562	82.2%	1,299	197	15.2%	1,580	240
14	DER-1-174	25	18	72.0%	16	7	43.8%	22	10
	DER-2-175	25	23	92.0%	22	4	18.2%	24	4
	DER-3-176	50	44	88.0%	38	15	39.5%	43	17
	TOTAL	100	85	85.0%	76	26	34.2%	89	31
15	DER-2-177	100	91	91.0%	67	2	3.0%	74	2
	DER-2-178	100	86	86.0%	54	8	14.8%	63	9
	Total Archery	200	177	88.5%	121	10	8.3%	137	11
	DER-3-179	250	228	91.2%	186	46	24.7%	204	50
	DER-3-180	101	96	95.0%	81	30	37.0%	85	32
	Total Muzzle	351	324	92.3%	267	76	28.5%	289	82
	TOTAL	551	501	90.9%	388	86	22.2%	427	95
16	DER-1-181	300	241	80.3%	199	70	35.2%	248	87
	DER-1-182	300	246	82.0%	201	53	26.4%	245	65
	DER-1-183	100	89	89.0%	82	49	59.8%	92	55
	DER-1-184	25	20	80.0%	13	6	46.2%	16	8
	Total Rifle	725	596	82.2%	495	178	36.0%	602	217
	DER-2-185	201	167	83.1%	112	12	10.7%	135	14
	DER-2-186	200	180	90.0%	145	34	23.4%	161	38
	Total Archery	401	347	86.5%	257	46	17.9%	297	53
	DER-3-187	300	267	89.0%	232	53	22.8%	261	60
	TOTAL	1,426	1,210	84.9%	984	277	28.2%	1,160	326

GMU	Hunt Code	Permits Issued	Total Returns	Response Rate	Reported		Success Rate	Estimated	
					Hunters	Harvest		Hunters	Harvest
17	DER-1-188	175	156	89.1%	139	70	50.4%	156	79
	DER-1-189	175	145	82.9%	137	69	50.4%	165	83
	DER-1-190	100	83	83.0%	73	37	50.7%	88	45
	Total Rifle	450	384	85.3%	349	176	50.4%	409	206
	DER-2-191	200	162	81.0%	126	16	12.7%	156	20
	DER-2-192	199	176	88.4%	157	24	15.3%	178	27
	Total Archery	399	338	84.7%	283	40	14.1%	334	47
	DER-3-193	200	179	89.5%	159	40	25.2%	178	45
	TOTAL	1,049	901	85.9%	791	256	32.4%	921	298
18	DER-1-194	100	77	77.0%	68	6	8.8%	88	8
	DER-1-195	100	83	83.0%	75	22	29.3%	90	27
	Total Rifle	200	160	80.0%	143	28	19.6%	179	35
	DER-2-196	50	45	90.0%	36	5	13.9%	40	6
	DER-2-197	50	48	96.0%	44	4	9.1%	46	4
	Total Archery	100	93	93.0%	80	9	11.3%	86	10
	DER-3-198	100	91	91.0%	79	22	27.8%	87	24
	TOTAL	400	344	86.0%	302	59	19.5%	351	69
19	DER-3-199	10	10	100.0%	8	5	62.5%	8	5
20	DER-1-200	100	81	81.0%	63	9	14.3%	78	11
	DER-1-201	100	86	86.0%	69	26	37.7%	80	30
	Total Rifle	200	167	83.5%	132	35	26.5%	158	42
	DER-2-202	22	16	72.7%	11	0	0.0%	15	0
	DER-2-203	25	25	100.0%	20	6	30.0%	20	6
	Total Archery	47	41	87.2%	31	6	19.4%	36	7
	DER-3-204	100	92	92.0%	68	17	25.0%	74	18
TOTAL	347	300	86.5%	231	58	25.1%	267	67	
21	DER-1-205	500	402	80.4%	345	96	27.8%	429	119
	DER-1-206	500	411	82.2%	334	82	24.6%	406	100
	DER-1-207	99	85	85.9%	74	36	48.6%	86	42
	Total Rifle	1,099	898	81.7%	753	214	28.4%	922	262
	DER-2-208	91	84	92.3%	61	4	6.6%	66	4
	DER-2-209	150	132	88.0%	102	29	28.4%	116	33
	Total Archery	241	216	89.6%	163	33	20.2%	182	37
	DER-3-210	500	452	90.4%	382	73	19.1%	423	81
TOTAL	1,840	1,566	85.1%	1,298	320	24.7%	1,525	376	
22	DER-1-211	100	80	80.0%	64	20	31.3%	80	25
	DER-1-212	100	89	89.0%	70	20	28.6%	79	22
	Total Rifle	200	169	84.5%	134	40	29.9%	159	47
	DER-2-213	21	18	85.7%	10	2	20.0%	12	2
	DER-2-214	25	22	88.0%	14	5	35.7%	16	6
	Total Archery	46	40	87.0%	24	7	29.2%	28	8
	DER-3-215	100	89	89.0%	68	19	27.9%	76	21
TOTAL	346	298	86.1%	226	66	29.2%	262	77	

GMU	Hunt Code	Permits	Total	Response	Reported		Success	Estimated	
		Issued	Returns	Rate	Hunters	Harvest	Rate	Hunters	Harvest
23	DER-1-216	450	390	86.7%	331	122	36.9%	382	141
	DER-1-217	50	41	82.0%	32	15	46.9%	39	18
	DER-1-218	450	369	82.0%	316	87	27.5%	385	106
	DER-1-219	50	45	90.0%	38	10	26.3%	42	11
	DER-1-220	50	48	96.0%	44	29	65.9%	46	30
	DER-1-221	50	42	84.0%	39	19	48.7%	46	23
	DER-1-222	25	22	88.0%	22	19	86.4%	25	22
	Total Rifle	1,125	957	85.1%	822	301	36.6%	966	354
	DER-2-223	75	65	86.7%	48	12	25.0%	55	14
	DER-2-224	0	0	0.0%	0	0	0.0%	0	0
	DER-2-225	100	88	88.0%	72	10	13.9%	82	11
	DER-2-226	75	70	93.3%	44	4	9.1%	47	4
	DER-2-227	50	43	86.0%	39	12	30.8%	45	14
	DER-2-228	50	48	96.0%	41	9	22.0%	43	9
	Total Archery	350	314	89.7%	244	47	19.3%	272	52
	DER-3-229	440	372	84.5%	314	101	32.2%	371	119
	DER-3-230	47	42	89.4%	25	7	28.0%	28	8
	DER-3-231	50	44	88.0%	37	8	21.6%	42	9
	DER-3-232	50	45	90.0%	36	10	27.8%	40	11
	Total Muzzle	587	503	85.7%	412	126	30.6%	481	147
TOTAL	2,062	1,774	86.0%	1,478	474	32.1%	1,718	551	
24	DER-1-233	300	246	82.0%	223	87	39.0%	272	106
	DER-1-234	50	39	78.0%	21	5	23.8%	27	6
	DER-1-235	300	257	85.7%	220	58	26.4%	257	68
	DER-1-236	50	44	88.0%	20	6	30.0%	23	7
	DER-1-237	100	95	95.0%	90	66	73.3%	95	69
	Total Rifle	800	681	85.1%	574	222	38.7%	674	261
	DER-2-238	100	91	91.0%	85	38	44.7%	93	42
	DER-2-239	26	24	92.3%	19	4	21.1%	21	4
	DER-2-240	100	94	94.0%	80	26	32.5%	85	28
	DER-2-241	50	47	94.0%	30	12	40.0%	32	13
	Total Archery	276	256	92.8%	214	80	37.4%	231	86
	DER-3-242	300	271	90.3%	243	79	32.5%	269	87
	DER-3-243	49	44	89.8%	30	6	20.0%	33	7
	Total Muzzle	349	315	90.3%	273	85	31.1%	302	94
TOTAL	1,425	1,252	87.9%	1,061	387	36.5%	1,208	440	
25	DER-1-244	75	58	77.3%	49	19	38.8%	63	25
	DER-1-245	75	62	82.7%	55	20	36.4%	67	24
	Total Rifle	150	120	80.0%	104	39	37.5%	130	49
	DER-2-246	0	0	0.0%	0	0	0.0%	0	0
	DER-2-247	50	47	94.0%	37	6	16.2%	39	6
	Total Archery	50	47	94.0%	37	6	16.2%	39	6
	DER-3-248	37	31	83.8%	26	4	15.4%	31	5
TOTAL	237	198	83.5%	167	49	29.3%	200	59	

GMU	Hunt Code	Permits Issued	Total Returns	Response Rate	Reported		Success Rate	Estimated	
					Hunters	Harvest		Hunters	Harvest
26	DER-1-249	75	69	92.0%	55	22	40.0%	60	24
	DER-1-250	75	63	84.0%	55	17	30.9%	65	20
	Total Rifle	150	132	88.0%	110	39	35.5%	125	44
	DER-2-251	1	1	100.0%	0	0	0.0%	0	0
	DER-2-252	25	20	80.0%	15	2	13.3%	19	3
	Total Archery	26	21	80.8%	15	2	13.3%	19	2
	DER-3-253	75	59	78.7%	44	16	36.4%	56	20
	TOTAL	251	212	84.5%	169	57	33.7%	200	67
27	DER-1-254	25	18	72.0%	14	8	57.1%	19	11
	DER-1-255	25	23	92.0%	20	10	50.0%	22	11
	DER-1-256	25	22	88.0%	19	13	68.4%	22	15
	DER-1-257	25	20	80.0%	16	8	50.0%	20	10
	Total Rifle	100	83	83.0%	69	39	56.5%	83	47
	DER-2-258	25	21	84.0%	20	4	20.0%	24	5
	DER-2-259	30	29	96.7%	21	2	9.5%	22	2
	Total Archery	55	50	90.9%	41	6	14.6%	45	7
	DER-3-260	25	25	100.0%	21	6	28.6%	21	6
	DER-3-261	25	24	96.0%	20	8	40.0%	21	8
	Total Muzzle	50	49	98.0%	41	14	34.1%	42	14
TOTAL	205	182	88.8%	151	59	39.1%	170	66	
28	DER-1-262	10	9	90.0%	7	3	42.9%	8	3
	DER-1-263	10	10	100.0%	8	3	37.5%	8	3
	TOTAL	20	19	95.0%	15	6	40.0%	16	6
29	DER-1-264	150	123	82.0%	111	60	54.1%	135	73
	DER-1-265	150	136	90.7%	114	52	45.6%	126	57
	Total Rifle	300	259	86.3%	225	112	49.8%	261	130
	DER-2-266	200	167	83.5%	126	25	19.8%	151	30
	DER-3-267	50	46	92.0%	39	17	43.6%	42	18
	TOTAL	550	472	85.8%	390	154	39.5%	454	179
30	DER-1-268	1,000	847	84.7%	763	315	41.3%	901	372
	DER-1-269	1,500	1,260	84.0%	1,102	335	30.4%	1,312	399
	DER-1-270	246	208	84.6%	186	83	44.6%	220	98
	DER-1-271	250	215	86.0%	183	69	37.7%	213	80
	Total Rifle	2,996	2,530	84.4%	2,234	802	35.9%	2,645	950
	DER-2-272	301	252	83.7%	222	53	23.9%	265	63
	DER-3-273	500	446	89.2%	394	88	22.3%	442	99
TOTAL	3,797	3,228	85.0%	2,850	943	33.1%	3,352	1,109	
31	DER-1-274	400	316	79.0%	292	122	41.8%	370	154
	DER-1-275	400	341	85.3%	310	183	59.0%	364	215
	Total Rifle	800	657	82.1%	602	305	50.7%	733	371
	DER-2-276	200	169	84.5%	149	46	30.9%	176	54
	DER-3-277	120	104	86.7%	98	41	41.8%	113	47
	TOTAL	1,120	930	83.0%	849	392	46.2%	1,022	472
32	DER-1-278	600	520	86.7%	453	237	52.3%	523	273
	DER-1-279	600	516	86.0%	452	173	38.3%	526	201
	Total Rifle	1,200	1,036	86.3%	905	410	45.3%	1,048	475
	DER-2-280	200	176	88.0%	147	33	22.4%	167	38
	DER-3-281	125	107	85.6%	99	54	54.5%	116	63
	TOTAL	1,525	1,319	86.5%	1,151	497	43.2%	1,331	575

Table 12. Hunt Code Summary (Draw Permits)

GMU	Hunt Code	Permits	Total	Response	Reported		Success	Estimated	
		Issued	Returns	Rate	Hunters	Harvest	Rate	Hunters	Harvest
33	DER-1-282	150	123	82.0%	116	58	50.0%	141	71
	DER-1-283	150	133	88.7%	114	68	59.6%	129	77
	Total Rifle	300	256	85.3%	230	126	54.8%	270	148
	DER-2-284	100	87	87.0%	69	17	24.6%	79	20
	DER-3-285	50	43	86.0%	32	14	43.8%	37	16
	TOTAL	450	386	85.8%	331	157	47.4%	386	183
31/33	DER-1-286	15	11	73.3%	11	8	72.7%	15	11
	DER-3-287	30	29	96.7%	29	24	82.8%	30	25
	DER-3-288	10	9	90.0%	9	5	55.6%	10	6
	Total Muzzle	40	38	95.0%	38	29	76.3%	40	31
	TOTAL	55	49	89.1%	49	37	75.5%	55	42
34	DER-1-289	1,200	1,009	84.1%	844	213	25.2%	1,004	253
	DER-1-290	1,200	991	82.6%	821	205	25.0%	994	248
	DER-1-291	49	38	77.6%	29	15	51.7%	37	19
	DER-1-292	50	45	90.0%	35	12	34.3%	39	13
	Total Rifle	2,499	2,083	83.4%	1,729	445	25.7%	2,074	534
	DER-2-293	800	704	88.0%	561	139	24.8%	638	158
	DER-3-294	350	306	87.4%	257	73	28.4%	294	83
TOTAL	3,649	3,093	84.8%	2,547	657	25.8%	3,005	775	
36	DER-1-295	299	228	76.3%	191	79	41.4%	250	104
	DER-1-296	300	263	87.7%	227	80	35.2%	259	91
	DER-1-297	25	22	88.0%	20	12	60.0%	23	14
	Total Rifle	624	513	82.2%	438	171	39.0%	533	208
	DER-2-298	250	220	88.0%	178	88	49.4%	202	100
	DER-3-299	75	58	77.3%	50	33	66.0%	65	43
	DER-3-300	25	23	92.0%	19	9	47.4%	21	10
	Total Muzzle	100	81	81.0%	69	42	60.9%	85	52
	TOTAL	974	814	83.6%	685	301	43.9%	820	360
37	DER-1-301	600	512	85.3%	453	136	30.0%	531	159
	DER-1-302	600	517	86.2%	459	145	31.6%	533	168
	Total Rifle	1,200	1,029	85.8%	912	281	30.8%	1,064	328
	DER-2-303	200	171	85.5%	143	37	25.9%	167	43
	DER-3-304	225	200	88.9%	171	33	19.3%	192	37
TOTAL	1,625	1,400	86.2%	1,226	351	28.6%	1,423	407	
38	DER-1-305	350	286	81.7%	251	56	22.3%	307	69
	DER-1-306	350	290	82.9%	247	51	20.6%	298	62
	Total Rifle	700	576	82.3%	498	107	21.5%	605	130
	DER-2-307	200	181	90.5%	136	27	19.9%	150	30
	DER-3-308	200	171	85.5%	147	36	24.5%	172	42
TOTAL	1,100	928	84.4%	781	170	21.8%	926	202	

GMU	Hunt Code	Permits Issued	Total Returns	Response Rate	Reported		Success Rate	Estimated	
					Hunters	Harvest		Hunters	Harvest
39	DER-1-309	50	42	84.0%	38	7	18.4%	45	8
	DER-1-310	50	40	80.0%	36	13	36.1%	45	16
	Total Rifle	100	82	82.0%	74	20	27.0%	90	24
	DER-2-311	50	42	84.0%	37	9	24.3%	44	11
	DER-3-312	50	46	92.0%	39	6	15.4%	42	7
	TOTAL	200	170	85.0%	150	35	23.3%	176	41
40	DER-1-313	50	40	80.0%	34	24	70.6%	43	30
	DER-1-314	50	43	86.0%	35	15	42.9%	41	17
	Total Rifle	100	83	83.0%	69	39	56.5%	83	47
	DER-2-315	49	42	85.7%	27	6	22.2%	32	7
	DER-3-316	25	17	68.0%	10	3	30.0%	15	4
	TOTAL	174	142	81.6%	106	48	45.3%	130	59
41	DER-1-317	35	32	91.4%	31	23	74.2%	34	25
	DER-1-318	35	27	77.1%	23	15	65.2%	30	19
	DER-1-319	10	8	80.0%	5	3	60.0%	6	4
	DER-1-320	5	5	100.0%	5	5	100.0%	5	5
	DER-1-321	15	14	93.3%	11	4	36.4%	12	4
	Total Rifle	100	86	86.0%	75	50	66.7%	87	58
	DER-2-322	10	9	90.0%	4	3	75.0%	4	3
	DER-3-323	25	21	84.0%	18	13	72.2%	21	15
	TOTAL	135	116	85.9%	97	66	68.0%	113	77
42	DER-1-324	60	49	81.7%	41	15	36.6%	50	18
	DER-1-325	60	45	75.0%	33	14	42.4%	44	19
	DER-1-326	10	7	70.0%	5	0	0.0%	7	0
	Total Rifle	130	101	77.7%	79	29	36.7%	102	37
	DER-2-327	10	7	70.0%	3	1	33.3%	4	1
	DER-3-328	10	10	100.0%	5	2	40.0%	5	2
TOTAL	150	118	78.7%	87	32	36.8%	111	41	
43	DER-1-329	50	37	74.0%	33	1	3.0%	45	1
	DER-1-330	50	36	72.0%	34	5	14.7%	47	7
	Total Rifle	100	73	73.0%	67	6	9.0%	92	8
	DER-2-331	25	16	64.0%	15	0	0.0%	23	0
	DER-3-332	10	8	80.0%	8	1	12.5%	10	1
TOTAL	135	97	71.9%	90	7	7.8%	125	10	
45	DER-1-333	275	219	79.6%	199	53	26.6%	250	67
	DER-1-334	275	233	84.7%	211	40	19.0%	249	47
	DER-1-335	25	22	88.0%	19	15	78.9%	22	17
	DER-1-336	25	22	88.0%	18	3	16.7%	20	3
	Total Rifle	600	496	82.7%	447	111	24.8%	541	134
	DER-2-337	120	106	88.3%	88	24	27.3%	100	27
	DER-3-338	110	101	91.8%	94	32	34.0%	102	35
	DER-3-339	40	36	90.0%	34	15	44.1%	38	17
	Total Muzzle	150	137	91.3%	128	47	36.7%	140	51
TOTAL	870	739	84.9%	663	182	27.5%	781	214	

GMU	Hunt Code	Permits Issued	Total Returns	Response Rate	Reported		Success Rate	Estimated	
					Hunters	Harvest		Hunters	Harvest
46 Private	DER-1-452								
	DER-1-453								
	Total Rifle								
	DER-2-454								
	DER-3-455								
	TOTAL								
47	DER-1-340	20	14	70.0%	9	7	77.8%	13	10
	DER-1-341	20	19	95.0%	15	3	20.0%	16	3
	Total Rifle	40	33	82.5%	24	10	41.7%	29	12
	DER-2-342	10	7	70.0%	5	0	0.0%	7	0
	DER-3-343	20	17	85.0%	16	5	31.3%	19	6
		TOTAL	70	57	81.4%	45	15	33.3%	55
48	DER-1-344	50	45	90.0%	39	14	35.9%	43	16
	DER-1-345	50	41	82.0%	35	9	25.7%	43	11
	Total Rifle	100	86	86.0%	74	23	31.1%	86	27
	DER-2-346	50	44	88.0%	38	9	23.7%	43	10
		TOTAL	150	130	86.7%	112	32	28.6%	129
49	DER-1-347	100	78	78.0%	73	16	21.9%	94	21
	DER-1-348	100	79	79.0%	77	19	24.7%	97	24
	Total Rifle	200	157	78.5%	150	35	23.3%	191	45
	DER-2-349	100	94	94.0%	79	19	24.1%	84	20
		TOTAL	300	251	83.7%	229	54	23.6%	274
50	DER-1-350	50	44	88.0%	40	12	30.0%	45	14
	DER-1-351	50	42	84.0%	37	18	48.6%	44	21
	Total Rifle	100	86	86.0%	77	30	39.0%	90	35
	DER-2-352	10	9	90.0%	9	0	0.0%	10	0
		TOTAL	110	95	86.4%	86	30	34.9%	100
51	DER-1-353	100	79	79.0%	71	22	31.0%	90	28
	DER-1-354	100	80	80.0%	75	28	37.3%	94	35
	Total Rifle	200	159	79.5%	146	50	34.2%	184	63
	DER-2-355	80	67	83.8%	45	10	22.2%	54	12
		TOTAL	280	226	80.7%	191	60	31.4%	237
52	DER-1-356	100	78	78.0%	69	21	30.4%	88	27
	DER-1-357	100	81	81.0%	73	23	31.5%	90	28
	Total Rifle	200	159	79.5%	142	44	31.0%	179	55
	DER-2-358	100	86	86.0%	70	16	22.9%	81	19
	DER-3-359	30	24	80.0%	21	2	9.5%	26	3
	TOTAL	330	269	81.5%	233	62	26.6%	286	76
53	DER-1-360	100	83	83.0%	79	23	29.1%	95	28
	DER-1-361	101	86	85.1%	76	24	31.6%	89	28
	Total Rifle	201	169	84.1%	155	47	30.3%	184	56
	DER-2-362	90	82	91.1%	69	16	23.2%	76	18
		TOTAL	291	251	86.3%	224	63	28.1%	260

GMU	Hunt Code	Permits Issued	Total Returns	Response Rate	Reported		Success Rate	Estimated	
					Hunters	Harvest		Hunters	Harvest
54 Private	DER-1-456								
	DER-1-457								
	DER-1-458								
	Total Rifle								
	DER-2-459								
	DER-3-460								
	TOTAL								
55 Private	DER-1-461								
	DER-1-462								
	DER-1-465								
	Total Rifle								
	DER-2-463								
	DER-3-464								
	TOTAL								
54/55 WMAs	DER-1-363	15	10	66.7%	9	6	66.7%	14	9
	DER-1-364	15	12	80.0%	10	4	40.0%	13	5
	TOTAL	30	22	73.3%	19	10	52.6%	26	14
55 WMAs	DER-1-365	5	5	100.0%	5	2	40.0%	5	2
	DER-1-366	5	5	100.0%	4	4	100.0%	4	4
	DER-1-367	10	7	70.0%	6	2	33.3%	9	3
	DER-1-368	10	8	80.0%	8	4	50.0%	10	5
	TOTAL	30	25	83.3%	23	12	52.2%	28	14
56	DER-1-369	15	13	86.7%	10	7	70.0%	12	8
	DER-1-370	15	12	80.0%	10	8	80.0%	13	10
	DER-1-371	10	10	100.0%	10	7	70.0%	10	7
	Total Rifle	40	35	87.5%	30	22	73.3%	34	25
	DER-2-372	10	9	90.0%	6	2	33.3%	7	2
	DER-3-373	10	9	90.0%	9	5	55.6%	10	6
	TOTAL	60	53	88.3%	45	29	64.4%	51	33
57	DER-1-374	25	21	84.0%	18	8	44.4%	21	10
	DER-1-375	25	24	96.0%	22	12	54.5%	23	13
	DER-1-376	10	7	70.0%	5	0	0.0%	7	0
	DER-1-377	10	9	90.0%	5	5	100.0%	6	6
	Total Rifle	70	61	87.1%	50	25	50.0%	57	29
	DER-2-378	15	14	93.3%	9	1	11.1%	10	1
	DER-2-379	40	38	95.0%	31	12	38.7%	33	13
	Total Archery	55	52	94.5%	40	13	32.5%	42	14
	DER-3-380	15	13	86.7%	11	8	72.7%	13	9
	TOTAL	140	126	90.0%	101	46	45.5%	112	51

GMU	Hunt Code	Permits Issued	Total Returns	Response Rate	Reported		Success Rate	Estimated	
					Hunters	Harvest		Hunters	Harvest
58	DER-1-381	30	27	90.0%	26	11	42.3%	29	12
	DER-1-382	30	24	80.0%	21	10	47.6%	26	13
	DER-1-383	10	6	60.0%	5	2	40.0%	8	3
	DER-1-384	10	9	90.0%	7	7	100.0%	8	8
	DER-1-385	13	11	84.6%	10	3	30.0%	12	4
	Total Rifle	93	77	82.8%	69	33	47.8%	83	40
	DER-2-386	15	14	93.3%	13	2	15.4%	14	2
	DER-3-387	15	12	80.0%	10	9	90.0%	13	11
	TOTAL	123	103	83.7%	92	44	47.8%	110	53
59	DER-1-388	35	28	80.0%	26	15	57.7%	33	19
	DER-1-389	35	30	85.7%	27	12	44.4%	32	14
	DER-1-390	10	9	90.0%	8	1	12.5%	9	1
	DER-1-391	5	5	100.0%	5	5	100.0%	5	5
	DER-1-392	14	9	64.3%	7	1	14.3%	11	2
	Total Rifle	99	81	81.8%	73	34	46.6%	89	42
	DER-2-393	7	6	85.7%	3	0	0.0%	4	0
	DER-3-394	25	21	84.0%	13	8	61.5%	15	10
	TOTAL	131	108	82.4%	89	42	47.2%	108	51

Table 13. 2009-2010 New Mexico Deer Harvest Report--Hunt Code Summary (Private Land-Only Permits); NMDGF.

GMU	Hunt Code	Permits Issued	Total Returns	Response Rate	Reported		Success Rate	Estimated	
					Hunters	Harvest		Hunters	Harvest
2A	DER-1-100	2	0	0.0%	0	0	0.0%	0	0
	DER-1-101	0	0	0.0%	0	0	0.0%	0	0
	DER-1-102	3	0	0.0%	0	0	0.0%	0	0
	Total Rifle	5	0	0.0%	0	0	0.0%	0	0
	DER-2-103	0	0	0.0%	0	0	0.0%	0	0
	DER-2-104	0	0	0.0%	0	0	0.0%	0	0
	DER-2-105	0	0	0.0%	0	0	0.0%	0	0
	DER-2-106	2	0	0.0%	0	0	0.0%	0	0
	Total Archery	2	0	0.0%	0	0	0.0%	0	0
	DER-3-107	0	0	0.0%	0	0	0.0%	0	0
	DER-3-108	1	0	0.0%	0	0	0.0%	0	0
	Total Muzzle	1	0	0.0%	0	0	0.0%	0	0
	TOTAL		8	0	0.0%	0	0	0.0%	0
2B	DER-1-109	0	0	0.0%	0	0	0.0%	0	0
	DER-1-110	0	0	0.0%	0	0	0.0%	0	0
	DER-1-111	0	0	0.0%	0	0	0.0%	0	0
	DER-1-112	0	0	0.0%	0	0	0.0%	0	0
	DER-1-113	0	0	0.0%	0	0	0.0%	0	0
	DER-1-114	3	0	0.0%	0	0	0.0%	0	0
	DER-1-115	14	0	0.0%	0	0	0.0%	0	0
	Total Rifle	17	0	0.0%	0	0	0.0%	0	0
	DER-2-116	0	0	0.0%	0	0	0.0%	0	0
	DER-2-117	0	0	0.0%	0	0	0.0%	0	0
	DER-2-118	0	0	0.0%	0	0	0.0%	0	0
	DER-2-119	0	0	0.0%	0	0	0.0%	0	0
	DER-2-120	0	0	0.0%	0	0	0.0%	0	0
	DER-2-121	2	0	0.0%	0	0	0.0%	0	0
	Total Archery	2	0	0.0%	0	0	0.0%	0	0
	DER-3-122	0	0	0.0%	0	0	0.0%	0	0
	DER-3-123	0	0	0.0%	0	0	0.0%	0	0
	DER-3-124	0	0	0.0%	0	0	0.0%	0	0
	Total Muzzle	0	0	0.0%	0	0	0.0%	0	0
	TOTAL		19	0	0.0%	0	0	0.0%	0
2C	DER-1-125	0	0	0.0%	0	0	0.0%	0	0
	DER-1-126	1	0	0.0%	0	0	0.0%	0	0
	Total Rifle	1	0	0.0%	0	0	0.0%	0	0
	DER-2-127	0	0	0.0%	0	0	0.0%	0	0
	DER-2-128	0	0	0.0%	0	0	0.0%	0	0
	Total Archery	0	0	0.0%	0	0	0.0%	0	0
	DER-3-129	0	0	0.0%	0	0	0.0%	0	0
	DER-3-130	0	0	0.0%	0	0	0.0%	0	0
Total Muzzle	0	0	0.0%	0	0	0.0%	0	0	
TOTAL		1	0	0.0%	0	0	0.0%	0	0

GMU	Hunt Code	Permits Issued	Total Returns	Response Rate	Reported		Success Rate	Estimated	
					Hunters	Harvest		Hunters	Harvest
4 WMAs	DER-1-131	1							
	DER-1-132	1							
	DER-1-133	0							
	DER-1-134	0							
	TOTAL	2							
4 Private	DER-1-135	12	0	0.0%	0	0	0.0%	0	0
	DER-1-136	25	0	0.0%	0	0	0.0%	0	0
	Total Rifle	37	0	0.0%	0	0	0.0%	0	0
	DER-2-137	3	0	0.0%	0	0	0.0%	0	0
	DER-3-138	5	0	0.0%	0	0	0.0%	0	0
	TOTAL	45	0	0.0%	0	0	0.0%	0	0
5A Public	DER-1-139	4							
	DER-2-141								
	TOTAL	4							
5A Private	DER-1-140	21	0	0.0%	0	0	0.0%	0	0
	DER-2-142	4	0	0.0%	0	0	0.0%	0	0
	TOTAL	25	0	0.0%	0	0	0.0%	0	0
5B	DER-1-143	28	28	100.0%	23	15	65.2%	23	15
	DER-1-144	4	4	100.0%	4	3	75.0%	4	3
	TOTAL	32	32	100.0%	27	18	66.7%	27	18
6 A&C	DER-1-145	132	83	62.9%	78	26	33.3%	124	41
	DER-1-146	3	3	100.0%	3	0	0.0%	3	0
	Total Rifle	135	86	63.7%	81	26	32.1%	127	41
	DER-2-147	6	4	66.7%	4	0	0.0%	6	0
	DER-3-148	7	4	57.1%	4	3	75.0%	7	5
	TOTAL	148	94	63.5%	89	29	32.6%	140	46
7	DER-1-149	44	23	52.3%	22	11	50.0%	42	21
	DER-2-150	1	1	100.0%	1	1	100.0%	1	1
	DER-3-151	0	0	0.0%	0	0	0.0%	0	0
	TOTAL	45	24	53.3%	23	12	52.2%	43	23
8	DER-1-450	3	3	100.0%	2	0	0.0%	2	0
	DER-2-152	2	2	100.0%	2	1	50.0%	2	1
	DER-2-153	0	0	0.0%	0	0	0.0%	0	0
	Total Archery	2	2	100.0%	2	1	50.0%	2	1
	DER-3-451	3	2	66.7%	2	1	50.0%	3	2
	TOTAL	8	7	87.5%	6	2	33.3%	7	2
9	DER-1-154	38	22	57.9%	22	5	22.7%	38	9
	DER-1-155	3	3	100.0%	3	1	33.3%	3	1
	Total Rifle	41	25	61.0%	25	6	24.0%	41	10
	DER-2-156	2	1	50.0%	1	0	0.0%	2	0
	DER-3-157	3	2	66.7%	1	0	0.0%	2	0
	TOTAL	46	28	60.9%	27	6	22.2%	44	10

Table 13. Hunt Code Summary (Private Land-Only Permits)

GMU	Hunt Code	Permits Issued	Total Returns	Response Rate	Reported		Success Rate	Estimated	
					Hunters	Harvest		Hunters	Harvest
10	DER-1-158	22	10	45.5%	10	7	70.0%	22	15
	DER-1-159	28	21	75.0%	21	6	28.6%	28	8
	DER-1-160	34	28	82.4%	26	15	57.7%	32	18
	DER-1-161	15	9	60.0%	9	5	55.6%	15	8
	DER-1-162	1	0	0.0%	0	0	0.0%	0	0
	Total Rifle	100	68	68.0%	66	33	50.0%	97	49
	DER-2-163	12	11	91.7%	11	1	9.1%	12	1
	DER-3-164	14	10	71.4%	10	2	20.0%	14	3
	TOTAL	126	89	70.6%	87	36	41.4%	123	51
12	DER-1-165	45	33	73.3%	32	13	40.6%	44	18
	DER-2-166	7	5	71.4%	4	2	50.0%	6	3
	DER-3-167	8	2	25.0%	2	1	50.0%	8	4
	TOTAL	60	40	66.7%	38	16	42.1%	57	24
13	DER-1-168	35	21	60.0%	21	11	52.4%	35	18
	DER-1-169	61	34	55.7%	27	6	22.2%	48	11
	DER-1-170	3	3	100.0%	3	2	66.7%	3	2
	Total Rifle	99	58	58.6%	51	19	37.3%	87	32
	DER-2-171	6	3	50.0%	3	1	33.3%	6	2
	DER-2-172	7	7	100.0%	6	1	16.7%	6	1
	Total Archery	13	10	76.9%	9	2	22.2%	12	3
	DER-3-173	11	8	72.7%	8	2	25.0%	11	3
	TOTAL	123	76	61.8%	68	23	33.8%	110	37
14	DER-1-174	24	17	70.8%	15	4	26.7%	21	6
	DER-2-175	2	1	50.0%	1	1	100.0%	2	2
	DER-3-176	1	0	0.0%	0	0	0.0%	0	0
	TOTAL	27	18	66.7%	16	5	31.3%	24	8
15	DER-2-177	2	0	0.0%	0	0	0.0%	0	0
	DER-2-178	4	4	100.0%	4	0	0.0%	4	0
	Total Archery	6	4	66.7%	4	0	0.0%	6	0
	DER-3-179	7	5	71.4%	4	1	25.0%	6	1
	DER-3-180	0	0	0.0%	0	0	0.0%	0	0
	Total Muzzle	7	5	71.4%	4	1	25.0%	6	1
	TOTAL	13	9	69.2%	8	1	12.5%	12	1
16	DER-1-181	7	7	100.0%	7	1	14.3%	7	1
	DER-1-182	11	10	90.9%	10	3	30.0%	11	3
	DER-1-183	2	0	0.0%	0	0	0.0%	0	0
	DER-1-184	1	1	100.0%	1	1	100.0%	1	1
	Total Rifle	21	18	85.7%	18	5	27.8%	21	6
	DER-2-185	2	1	50.0%	1	0	0.0%	2	0
	DER-2-186	1	1	100.0%	1	0	0.0%	1	0
	Total Archery	3	2	66.7%	2	0	0.0%	3	0
	DER-3-187	3	2	66.7%	2	1	50.0%	3	2
	TOTAL	27	22	81.5%	22	6	27.3%	27	7

Table 13. Hunt Code Summary (Private Land-Only Permits)

GMU	Hunt Code	Permits Issued	Total Returns	Response Rate	Reported		Success Rate	Estimated	
					Hunters	Harvest		Hunters	Harvest
17	DER-1-188	20	17	85.0%	16	9	56.3%	19	11
	DER-1-189	15	14	93.3%	14	7	50.0%	15	8
	DER-1-190	8	8	100.0%	8	6	75.0%	8	6
	Total Rifle	43	39	90.7%	38	22	57.9%	42	24
	DER-2-191	0	0	0.0%	0	0	0.0%	0	0
	DER-2-192	3	3	100.0%	3	0	0.0%	3	0
	Total Archery	3	3	100.0%	3	0	0.0%	3	0
	DER-3-193	4	3	75.0%	3	2	66.7%	4	3
	TOTAL	50	45	90.0%	44	24	54.5%	49	27
18	DER-1-194	60	40	66.7%	40	9	22.5%	60	14
	DER-1-195	22	12	54.5%	12	3	25.0%	22	6
	Total Rifle	82	52	63.4%	52	12	23.1%	82	19
	DER-2-196	1	1	100.0%	1	1	100.0%	1	1
	DER-2-197	6	6	100.0%	6	1	16.7%	6	1
	Total Archery	7	7	100.0%	7	2	28.6%	7	2
	DER-3-198	1	1	100.0%	1	0	0.0%	1	0
	TOTAL	90	60	66.7%	60	14	23.3%	90	21
19	DER-3-199	0	0	0.0%	0	0	0.0%	0	0
20	DER-1-200	9	5	55.6%	5	1	20.0%	9	2
	DER-1-201	9	9	100.0%	6	5	83.3%	6	5
	Total Rifle	18	14	77.8%	11	6	54.5%	14	8
	DER-2-202	0	0	0.0%	0	0	0.0%	0	0
	DER-2-203	3	2	66.7%	2	0	0.0%	3	0
	Total Archery	3	2	66.7%	2	0	0.0%	3	0
	DER-3-204	2	2	100.0%	2	2	100.0%	2	2
TOTAL	23	18	78.3%	15	8	53.3%	19	10	
21	DER-1-205	94	51	54.3%	51	25	49.0%	94	46
	DER-1-206	71	45	63.4%	44	33	75.0%	69	52
	DER-1-207	8	3	37.5%	3	3	100.0%	8	8
	Total Rifle	173	99	57.2%	98	61	62.2%	171	107
	DER-2-208	2	2	100.0%	2	0	0.0%	2	0
	DER-2-209	22	19	86.4%	19	9	47.4%	22	10
	Total Archery	24	21	87.5%	21	9	42.9%	24	10
	DER-3-210	11	6	54.5%	5	1	20.0%	9	2
TOTAL	208	126	60.6%	124	71	57.3%	205	117	
22	DER-1-211	19	9	47.4%	9	3	33.3%	19	6
	DER-1-212	10	4	40.0%	3	1	33.3%	8	3
	Total Rifle	29	13	44.8%	12	4	33.3%	27	9
	DER-2-213	0	0	0.0%	0	0	0.0%	0	0
	DER-2-214	0	0	0.0%	0	0	0.0%	0	0
	Total Archery	0	0	0.0%	0	0	0.0%	0	0
	DER-3-215	2	2	100.0%	0	0	0.0%	0	0
TOTAL	31	15	48.4%	12	4	33.3%	25	8	

Table 13. Hunt Code Summary (Private Land-Only Permits)

GMU	Hunt Code	Permits Issued	Total Returns	Response Rate	Reported		Success Rate	Estimated	
					Hunters	Harvest		Hunters	Harvest
23	DER-1-216	106	41	38.7%	41	23	56.1%	106	59
	DER-1-217	4	2	50.0%	2	2	100.0%	4	4
	DER-1-218	79	38	48.1%	36	25	69.4%	75	52
	DER-1-219	2	1	50.0%	1	1	100.0%	2	2
	DER-1-220	2	1	50.0%	1	1	100.0%	2	2
	DER-1-221	0	0	0.0%	0	0	0.0%	0	0
	DER-1-222	0	0	0.0%	0	0	0.0%	0	0
	Total Rifle	193	83	43.0%	81	52	64.2%	188	121
	DER-2-223	1	0	0.0%	0	0	0.0%	0	0
	DER-2-224	1	1	100.0%	1	1	100.0%	1	1
	DER-2-225	16	12	75.0%	12	3	25.0%	16	4
	DER-2-226	2	0	0.0%	0	0	0.0%	0	0
	DER-2-227	8	4	50.0%	4	0	0.0%	8	0
	DER-2-228	0	0	0.0%	0	0	0.0%	0	0
	Total Archery	28	17	60.7%	17	4	23.5%	28	7
	DER-3-229	6	1	16.7%	1	1	100.0%	6	6
	DER-3-230	1	1	100.0%	1	1	100.0%	1	1
	DER-3-231	2	1	50.0%	1	1	100.0%	2	2
	DER-3-232	0	0	0.0%	0	0	0.0%	0	0
	Total Muzzle	9	3	33.3%	3	3	100.0%	9	9
TOTAL		230	103	44.8%	101	59	58.4%	226	132
24	DER-1-233	59	35	59.3%	34	20	58.8%	57	34
	DER-1-234	4	4	100.0%	4	3	75.0%	4	3
	DER-1-235	82	37	45.1%	37	21	56.8%	82	47
	DER-1-236	1	1	100.0%	1	1	100.0%	1	1
	DER-1-237	3	0	0.0%	0	0	0.0%	0	0
	Total Rifle	149	77	51.7%	76	45	59.2%	147	87
	DER-2-238	8	2	25.0%	2	1	50.0%	8	4
	DER-2-239	0	0	0.0%	0	0	0.0%	0	0
	DER-2-240	42	40	95.2%	39	21	53.8%	41	22
	DER-2-241	0	3	0.0%	3	1	33.3%	0	0
	Total Archery	50	45	90.0%	44	23	52.3%	49	26
	DER-3-242	12	5	41.7%	5	2	40.0%	12	5
	DER-3-243	1	0	0.0%	0	0	0.0%	0	0
	Total Muzzle	13	5	38.5%	5	2	40.0%	13	5
TOTAL		212	127	59.9%	125	70	56.0%	209	117
25	DER-1-244	12	5	41.7%	5	2	40.0%	12	5
	DER-1-245	4	2	50.0%	2	1	50.0%	4	2
	Total Rifle	16	7	43.8%	7	3	42.9%	16	7
	DER-2-246	0	0	0.0%	0	0	0.0%	0	0
	DER-2-247	0	0	0.0%	0	0	0.0%	0	0
	Total Archery	0	0	0.0%	0	0	0.0%	0	0
	DER-3-248	0	0	0.0%	0	0	0.0%	0	0
TOTAL		16	7	43.8%	7	3	42.9%	16	7

Table 13. Hunt Code Summary (Private Land-Only Permits)

GMU	Hunt Code	Permits	Total	Response	Reported		Success	Estimated	
		Issued	Returns	Rate	Hunters	Harvest	Rate	Hunters	Harvest
26	DER-1-249	32	15	46.9%	15	4	26.7%	32	9
	DER-1-250	24	11	45.8%	11	4	36.4%	24	9
	Total Rifle	56	26	46.4%	26	8	30.8%	56	17
	DER-2-251	0	0	0.0%	0	0	0.0%	0	0
	DER-2-252	4	2	50.0%	2	1	50.0%	4	2
	Total Archery	4	2	50.0%	2	1	50.0%	4	2
	DER-3-253	8	0	0.0%	0	0	0.0%	0	0
	TOTAL	68	28	41.2%	28	9	32.1%	68	22
27	DER-1-254	14	8	57.1%	7	6	85.7%	12	11
	DER-1-255	1	1	100.0%	1	1	100.0%	1	1
	DER-1-256	19	9	47.4%	9	8	88.9%	19	17
	DER-1-257	5	3	60.0%	3	2	66.7%	5	3
	Total Rifle	39	21	53.8%	20	17	85.0%	37	32
	DER-2-258	4	4	100.0%	4	0	0.0%	4	0
	DER-2-259	1	1	100.0%	1	0	0.0%	1	0
	Total Archery	5	5	100.0%	5	0	0.0%	5	0
	DER-3-260	3	2	66.7%	2	2	100.0%	3	3
	DER-3-261	1	0	0.0%	0	0	0.0%	0	0
	Total Muzzle	4	2	50.0%	2	2	100.0%	4	4
TOTAL	48	28	58.3%	27	19	70.4%	46	33	
28	DER-1-262								
	DER-1-263								
	TOTAL								
29	DER-1-264	21	17	81.0%	17	9	52.9%	21	11
	DER-1-265	18	16	88.9%	16	6	37.5%	18	7
	Total Rifle	39	33	84.6%	33	15	45.5%	39	18
	DER-2-266	10	5	50.0%	3	1	33.3%	6	2
	DER-3-267	3	0	0.0%	0	0	0.0%	0	0
	TOTAL	52	38	73.1%	36	16	44.4%	49	22
30	DER-1-268	123	68	55.3%	65	36	55.4%	118	65
	DER-1-269	119	62	52.1%	61	24	39.3%	117	46
	DER-1-270	3	1	33.3%	1	1	100.0%	3	3
	DER-1-271	5	1	20.0%	1	0	0.0%	5	0
	Total Rifle	250	132	52.8%	128	61	47.7%	242	116
	DER-2-272	43	35	81.4%	35	12	34.3%	43	15
	DER-3-273	11	6	54.5%	6	4	66.7%	11	7
	TOTAL	304	173	56.9%	169	77	45.6%	297	135
31	DER-1-274	152	81	53.3%	78	46	59.0%	146	86
	DER-1-275	160	82	51.3%	80	50	62.5%	156	98
	Total Rifle	312	163	52.2%	158	96	60.8%	302	184
	DER-2-276	54	40	74.1%	39	10	25.6%	53	14
	DER-3-277	29	18	62.1%	17	8	47.1%	27	13
	TOTAL	395	221	55.9%	214	114	53.3%	382	204
32	DER-1-278	229	114	49.8%	109	86	78.9%	219	173
	DER-1-279	250	127	50.8%	122	80	65.6%	240	157
	Total Rifle	479	241	50.3%	231	166	71.9%	459	330
	DER-2-280	92	46	50.0%	45	16	35.6%	90	32
	DER-3-281	31	20	64.5%	19	11	57.9%	29	17
	TOTAL	602	307	51.0%	295	193	65.4%	578	378

Table 13. Hunt Code Summary (Private Land-Only Permits)

GMU	Hunt Code	Permits Issued	Total Returns	Response Rate	Reported		Success Rate	Estimated	
					Hunters	Harvest		Hunters	Harvest
33	DER-1-282	40	37	92.5%	35	18	51.4%	38	19
	DER-1-283	77	37	48.1%	36	16	44.4%	75	33
	Total Rifle	117	74	63.2%	71	34	47.9%	112	54
	DER-2-284	15	13	86.7%	13	3	23.1%	15	3
	DER-3-285	4	2	50.0%	2	1	50.0%	4	2
	TOTAL	136	89	65.4%	86	38	44.2%	131	58
31/33	DER-1-286	1							
	DER-3-287								
	DER-3-288								
	Total Muzzle	0							
TOTAL	1								
34	DER-1-289	166	86	51.8%	82	48	58.5%	158	93
	DER-1-290	195	96	49.2%	94	59	62.8%	191	120
	DER-1-291	7	2	28.6%	2	1	50.0%	7	4
	DER-1-292	3	3	100.0%	3	2	66.7%	3	2
	Total Rifle	371	187	50.4%	181	110	60.8%	359	218
	DER-2-293	76	60	78.9%	57	33	57.9%	72	42
	DER-3-294	25	15	60.0%	14	6	42.9%	23	10
	TOTAL	472	262	55.5%	252	149	59.1%	454	268
36	DER-1-295	95	42	44.2%	40	18	45.0%	90	41
	DER-1-296	84	48	57.1%	48	22	45.8%	84	39
	DER-1-297	7	5	71.4%	5	5	100.0%	7	7
	Total Rifle	186	95	51.1%	93	45	48.4%	182	88
	DER-2-298	53	38	71.7%	37	28	75.7%	52	39
	DER-3-299	13	6	46.2%	5	5	100.0%	11	11
	DER-3-300	2	0	0.0%	0	0	0.0%	0	0
	Total Muzzle	15	6	40.0%	5	5	100.0%	13	13
TOTAL	254	139	54.7%	135	78	57.8%	247	143	
37	DER-1-301	247	116	47.0%	113	72	63.7%	241	153
	DER-1-302	230	132	57.4%	130	92	70.8%	227	160
	Total Rifle	477	248	52.0%	243	164	67.5%	467	315
	DER-2-303	53	41	77.4%	41	19	46.3%	53	25
	DER-3-304	16	11	68.8%	11	8	72.7%	16	12
TOTAL	546	300	54.9%	295	191	64.7%	537	348	
38	DER-1-305	125	62	49.6%	61	29	47.5%	123	58
	DER-1-306	120	63	52.5%	63	34	54.0%	120	65
	Total Rifle	245	125	51.0%	124	63	50.8%	243	123
	DER-2-307	39	22	56.4%	21	8	38.1%	37	14
	DER-3-308	30	21	70.0%	21	10	47.6%	30	14
TOTAL	314	168	53.5%	166	81	48.8%	310	151	

Table 13. Hunt Code Summary (Private Land-Only Permits)

GMU	Hunt Code	Permits	Total	Response	Reported		Success	Estimated	
		Issued	Returns	Rate	Hunters	Harvest	Rate	Hunters	Harvest
39	DER-1-309	106	65	61.3%	64	37	57.8%	104	60
	DER-1-310	124	70	56.5%	66	26	39.4%	117	46
	Total Rifle	230	135	58.7%	130	63	48.5%	221	107
	DER-2-311	22	17	77.3%	17	3	17.6%	22	4
	DER-3-312	15	9	60.0%	9	2	22.2%	15	3
	TOTAL	267	161	60.3%	156	68	43.6%	259	113
40	DER-1-313	138	67	48.6%	67	40	59.7%	138	82
	DER-1-314	131	61	46.6%	60	34	56.7%	129	73
	Total Rifle	269	128	47.6%	127	74	58.3%	267	156
	DER-2-315	11	8	72.7%	8	7	87.5%	11	10
	DER-3-316	5	5	100.0%	4	1	25.0%	4	1
	TOTAL	285	141	49.5%	139	82	59.0%	281	166
41	DER-1-317	45	24	53.3%	23	14	60.9%	43	26
	DER-1-318	66	38	57.6%	37	23	62.2%	64	40
	DER-1-319	9	7	77.8%	7	5	71.4%	9	6
	DER-1-320	15	9	60.0%	9	9	100.0%	15	15
	DER-1-321	0	0	0.0%	0	0	0.0%	0	0
	Total Rifle	135	78	57.8%	76	51	67.1%	132	88
	DER-2-322	3	3	100.0%	3	2	66.7%	3	2
	DER-3-323	9	2	22.2%	2	0	0.0%	9	0
	TOTAL	147	83	56.5%	81	53	65.4%	143	94
42	DER-1-324	124	48	38.7%	47	27	57.4%	121	70
	DER-1-325	126	46	36.5%	45	18	40.0%	123	49
	DER-1-326	25	17	68.0%	14	9	64.3%	21	13
	Total Rifle	275	111	40.4%	106	54	50.9%	263	134
	DER-2-327	5	5	100.0%	4	3	75.0%	4	3
	DER-3-328	1	1	100.0%	1	0	0.0%	1	0
	TOTAL	281	117	41.6%	111	57	51.4%	267	137
43	DER-1-329	22	14	63.6%	14	4	28.6%	22	6
	DER-1-330	32	18	56.3%	16	0	0.0%	28	0
	Total Rifle	54	32	59.3%	30	4	13.3%	51	7
	DER-2-331	1	1	100.0%	0	0	0.0%	0	0
	DER-3-332	2	2	100.0%	2	1	50.0%	2	1
	TOTAL	57	35	61.4%	32	5	15.6%	52	8
45	DER-1-333	25	15	60.0%	14	3	21.4%	23	5
	DER-1-334	25	14	56.0%	14	4	28.6%	25	7
	DER-1-335	7	4	57.1%	4	4	100.0%	7	7
	DER-1-336	2	2	100.0%	2	0	0.0%	2	0
	Total Rifle	59	35	59.3%	34	11	32.4%	57	19
	DER-2-337	3	1	33.3%	1	0	0.0%	3	0
	DER-3-338	9	9	100.0%	9	6	66.7%	9	6
	DER-3-339	4	2	50.0%	2	2	100.0%	4	4
	Total Muzzle	13	11	84.6%	11	8	72.7%	13	9
TOTAL	75	47	62.7%	46	19	41.3%	73	30	

Table 13. Hunt Code Summary (Private Land-Only Permits)

GMU	Hunt Code	Permits Issued	Total Returns	Response Rate	Reported		Success Rate	Estimated	
					Hunters	Harvest		Hunters	Harvest
46 Private	DER-1-452	79	32	40.5%	32	16	50.0%	79	40
	DER-1-453	96	40	41.7%	38	14	36.8%	91	34
	Total Rifle	175	72	41.1%	70	30	42.9%	170	73
	DER-2-454	7	6	85.7%	6	3	50.0%	7	4
	DER-3-455	6	4	66.7%	4	2	50.0%	6	3
	TOTAL	188	82	43.6%	80	35	43.8%	183	80
47	DER-1-340	29	12	41.4%	12	4	33.3%	29	10
	DER-1-341	40	13	32.5%	12	6	50.0%	37	18
	Total Rifle	69	25	36.2%	24	10	41.7%	66	28
	DER-2-342	0	0	0.0%	0	0	0.0%	0	0
	DER-3-343	1	1	100.0%	0	0	0.0%	0	0
	TOTAL	70	26	37.1%	24	10	41.7%	65	27
48	DER-1-344	2	1	50.0%	1	1	100.0%	2	2
	DER-1-345	9	6	66.7%	5	2	40.0%	8	3
	Total Rifle	11	7	63.6%	6	3	50.0%	9	5
	DER-2-346	1	1	100.0%	1	0	0.0%	1	0
	TOTAL	12	8	66.7%	7	3	42.9%	11	5
49	DER-1-347	8	8	100.0%	8	2	25.0%	8	2
	DER-1-348	13	8	61.5%	8	4	50.0%	13	7
	Total Rifle	21	16	76.2%	16	6	37.5%	21	8
	DER-2-349	0	0	0.0%	0	0	0.0%	0	0
	TOTAL	21	16	76.2%	16	6	37.5%	21	8
50	DER-1-350	4	2	50.0%	0	0	0.0%	0	0
	DER-1-351	2	2	100.0%	2	1	50.0%	2	1
	Total Rifle	6	4	66.7%	2	1	50.0%	3	2
	DER-2-352	0	0	0.0%	0	0	0.0%	0	0
	TOTAL	6	4	66.7%	2	1	50.0%	3	2
51	DER-1-353	27	24	88.9%	24	10	41.7%	27	11
	DER-1-354	49	26	53.1%	26	13	50.0%	49	25
	Total Rifle	76	50	65.8%	50	23	46.0%	76	35
	DER-2-355	0	0	0.0%	0	0	0.0%	0	0
	TOTAL	76	50	65.8%	50	23	46.0%	76	35
52	DER-1-356	7	7	100.0%	7	4	57.1%	7	4
	DER-1-357	9	7	77.8%	7	4	57.1%	9	5
	Total Rifle	16	14	87.5%	14	8	57.1%	16	9
	DER-2-358	1	1	100.0%	1	1	100.0%	1	1
	DER-3-359	0	0	0.0%	0	0	0.0%	0	0
	TOTAL	17	15	88.2%	15	9	60.0%	17	10
53	DER-1-360	7	7	100.0%	7	4	57.1%	7	4
	DER-1-361	7	7	100.0%	7	5	71.4%	7	5
	Total Rifle	14	14	100.0%	14	9	64.3%	14	9
	DER-2-362	1	1	100.0%	1	0	0.0%	1	0
	TOTAL	15	15	100.0%	15	9	60.0%	15	9

Table 13. Hunt Code Summary (Private Land-Only Permits)

GMU	Hunt Code	Permits Issued	Total Returns	Response Rate	Reported		Success Rate	Estimated	
					Hunters	Harvest		Hunters	Harvest
54 Private	DER-1-456	5	5	100.0%	5	5	100.0%	5	5
	DER-1-457	14	7	50.0%	7	5	71.4%	14	10
	DER-1-458	5	5	100.0%	5	2	40.0%	5	2
	Total Rifle	24	17	70.8%	17	12	70.6%	24	17
	DER-2-459	3	2	66.7%	2	1	50.0%	3	2
	DER-3-460	1	0	0.0%	0	0	0.0%	0	0
	TOTAL	28	19	67.9%	19	13	68.4%	28	19
55 Private	DER-1-461	27	16	59.3%	16	9	56.3%	27	15
	DER-1-462	53	29	54.7%	29	25	86.2%	53	46
	DER-1-465	7	7	100.0%	6	3	50.0%	6	3
	Total Rifle	87	52	59.8%	51	37	72.5%	85	62
	DER-2-463	30	4	13.3%	4	1	25.0%	30	8
	DER-3-464	0	0	0.0%	0	0	0.0%	0	0
	TOTAL	117	56	47.9%	55	38	69.1%	115	79
54/55 WMAs	DER-1-363	1							
	DER-1-364								
	TOTAL	1							
55 WMAs	DER-1-365	1							
	DER-1-366	1							
	DER-1-367								
	DER-1-368	1							
	TOTAL	3							
56	DER-1-369	24	9	37.5%	8	7	87.5%	21	19
	DER-1-370	24	16	66.7%	15	9	60.0%	23	14
	DER-1-371	2	2	100.0%	2	2	100.0%	2	2
	Total Rifle	50	27	54.0%	25	18	72.0%	46	33
	DER-2-372	0	0	0.0%	0	0	0.0%	0	0
	DER-3-373	4	2	50.0%	2	1	50.0%	4	2
	TOTAL	54	29	53.7%	27	19	70.4%	50	35
57	DER-1-374	47	25	53.2%	25	18	72.0%	47	34
	DER-1-375	66	34	51.5%	34	22	64.7%	66	43
	DER-1-376	6	6	100.0%	5	3	60.0%	5	3
	DER-1-377	13	9	69.2%	9	8	88.9%	13	12
	Total Rifle	132	74	56.1%	73	51	69.9%	130	91
	DER-2-378	11	7	63.6%	7	1	14.3%	11	2
	DER-2-379								
	Total Archery	11	7	63.6%	7	1	14.3%	11	2
	DER-3-380	10	1	10.0%	1	1	100.0%	10	10
	TOTAL	153	82	53.6%	81	53	65.4%	151	99

Table 13. Hunt Code Summary (Private Land-Only Permits)

GMU	Hunt Code	Permits Issued	Total Returns	Response Rate	Reported		Success Rate	Estimated	
					Hunters	Harvest		Hunters	Harvest
58	DER-1-381	62	21	33.9%	21	16	76.2%	62	47
	DER-1-382	46	33	71.7%	33	24	72.7%	46	33
	DER-1-383	2	1	50.0%	1	0	0.0%	2	0
	DER-1-384	12	1	8.3%	1	1	100.0%	12	12
	DER-1-385	1	0	0.0%	0	0	0.0%	0	0
	Total Rifle	123	56	45.5%	56	41	73.2%	123	90
	DER-2-386	1	0	0.0%	0	0	0.0%	0	0
	DER-3-387	1	1	100.0%	1	1	100.0%	1	1
	TOTAL	125	57	45.6%	57	42	73.7%	125	92
	59	DER-1-388	31	9	29.0%	9	7	77.8%	31
DER-1-389		37	17	45.9%	17	10	58.8%	37	22
DER-1-390		15	11	73.3%	10	2	20.0%	14	3
DER-1-391		6	1	16.7%	1	1	100.0%	6	6
DER-1-392		4	3	75.0%	3	3	100.0%	4	4
Total Rifle		93	41	44.1%	40	23	57.5%	91	52
DER-2-393		1	1	100.0%	0	0	0.0%	0	0
DER-3-394		3	1	33.3%	1	1	100.0%	3	3
TOTAL		97	43	44.3%	41	24	58.5%	92	54

Huntcodes where permits were added to balance with returns

Huntcodes where private land-only permits should not be issued