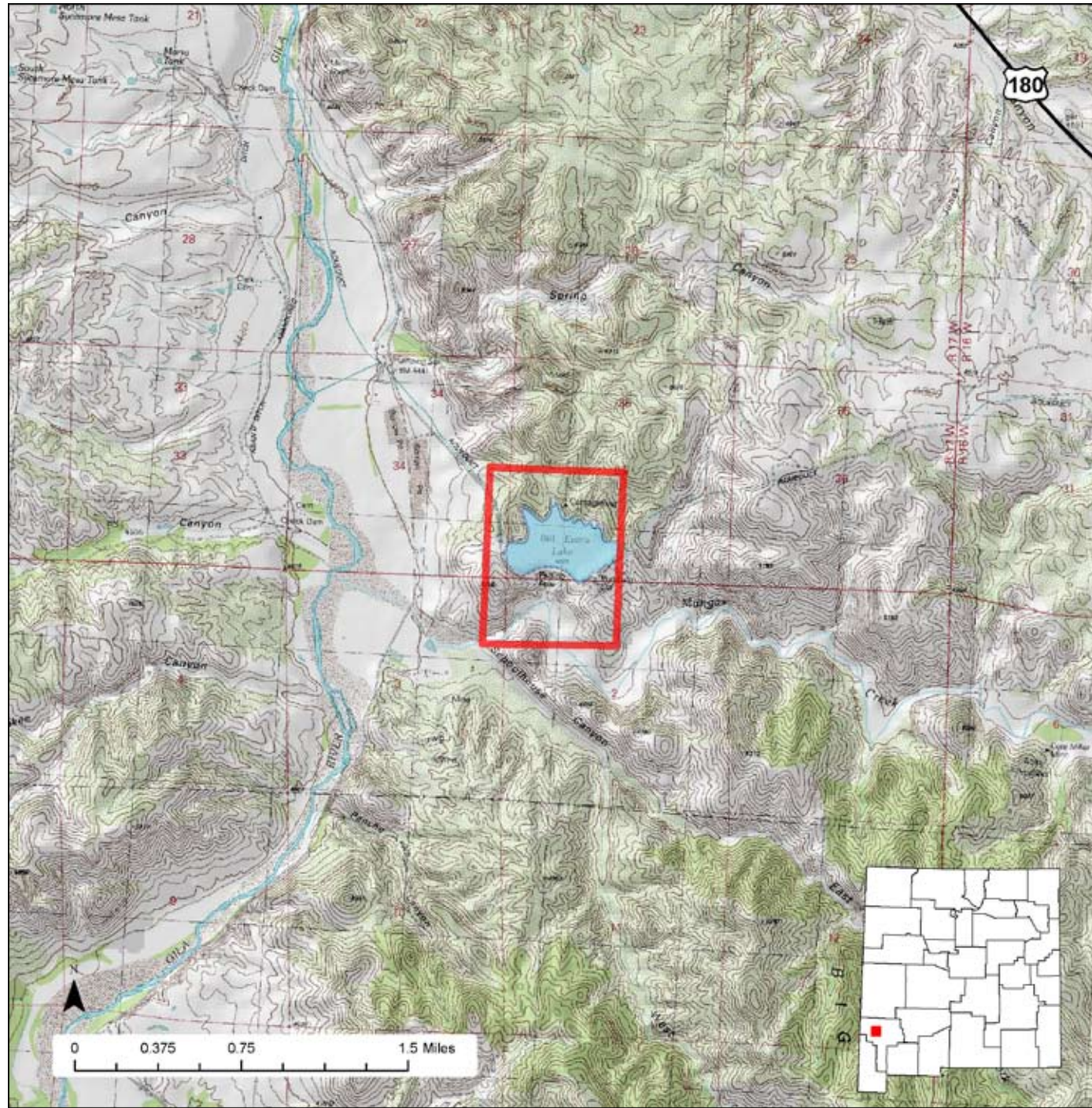




Bill Evans Wildlife Area



Location: Bill Evans Lake is a 62-acre lake situated between Cliff and Silver City in the Gila area.

Total Acreage: 300 acres.

Purchase: Bill Evans Lake was purchased in 1972 from the Phelps-Dodge Corporation.

Description: Situated on top of a mesa, this small property provides fishing access and habitat for wildlife. The reservoir is located 300 feet above the Gila River. Water is routinely pumped from the river below to maintain lake levels and suitable habitat for warm and cold-water fish.

For More information: More information about hunting, fishing and other activities, may be found on the Department's website: www.wildlife.state.nm.us/.

GAIN Activities	What to See, Do, and Learn
<ul style="list-style-type: none"> ✓ Wildlife Viewing ✓ Photographing 	<p>Wildlife Viewing-Wildlife watchers may see deer and other wildlife year-round. Good binoculars are important. The best time to view wildlife is at dawn or dusk.</p> <p>Photographing-The best time to photograph wildlife is at dawn or dusk. A telephoto lens may be important.</p> <p>Hiking-Hiking is the best way to see wildlife year-round at Bill Evans or other wildlife management areas.</p> <p>Bicycling-Allowed only on established roads.</p> <p>Horseback Riding-Horseback riding is allowed year-round however, opportunities are extremely limited.</p> <p>Camping-Primitive camping is allowed year-round in designated areas.</p> <p>Hunting-There are no hunting opportunities at Bill Evans.</p> <p>Fishing-Year-round fishing is allowed in Bill Evans Lake for warm-water species all year and for rainbow trout during the winter.</p> <p>Closures-Bill Evans Wildlife Area is open year-round.</p> <p>Facilities-Rest rooms are available and primitive camping is allowed. No drinking water is available.</p> <p>Fees-Fishermen must have appropriate licenses and permits. Wildlife viewers, photographers, hikers, bicyclists, horseback riders, and campers must have a valid license or permit. See the Department's website www.wildlife.state.nm.us for more information.</p> <p>Motorized Vehicles-Not allowed beyond the roadway and parking area.</p>
<p style="text-align: center;">Access</p> <ul style="list-style-type: none"> ✓ Hiking ✓ Bicycling ✓ Horseback Riding ✓ Camping 	
<p style="text-align: center;">Hunting and Fishing</p> <ul style="list-style-type: none"> ✓ No hunting opportunities ✓ Fishing 	
<p style="text-align: center;">Closures</p> <ul style="list-style-type: none"> ✓ No 	
<p style="text-align: center;">Facilities</p> <ul style="list-style-type: none"> ✓ Rest rooms ✓ Primitive camping ✓ No drinking water 	
<p style="text-align: center;">Fees</p> <ul style="list-style-type: none"> ✓ Yes 	
<p style="text-align: center;">Motorized Vehicles</p> <ul style="list-style-type: none"> ✓ Not allowed beyond the roadway and parking area 	
<p>For more information on hunting and fishing rules and seasons, please read current hunting or fishing Rules and Information Booklets available on the Department's website, at Department offices, or from license vendors state-wide.</p>	