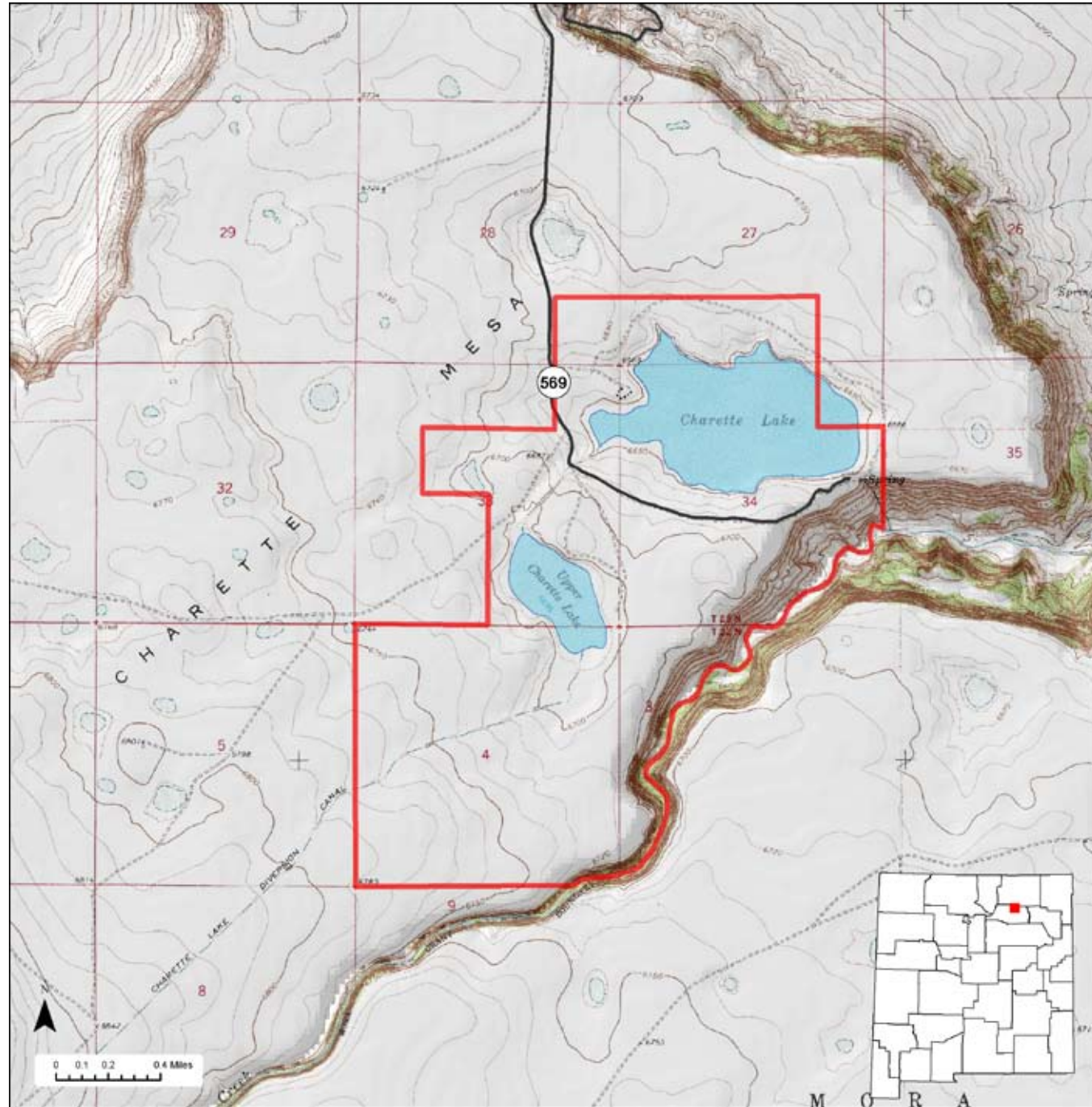




Charette Lakes Wildlife Area



Location: Charette Lakes Wildlife Area is located north of Wagon Mound in Mora County.

Total Acreage: 1,901 total acres. Upper Charette Lake is about 100 acres, Lower Charette Lake is about 300 acres.

Purchase: Charette Lakes was purchased in 1949 to provide fishing opportunities and waterfowl resting areas.

Description: The property sits on top of Charette Mesa at 6,500 feet in elevation and contains two lakes. It is ringed by grasslands.

For More information: More information about hunting, fishing and other activities, may be found on the Department's website: www.wildlife.state.nm.us/.

GAIN Activities	What to See, Do, and Learn
<ul style="list-style-type: none"> ✓ Wildlife Viewing ✓ Photographing 	<p>Wildlife Viewing-Wildlife watchers are likely to see pronghorn antelope, hawks, prairie birds, and various species of waterfowl. Good binoculars are important. The best time to view wildlife is at dawn or dusk.</p>
<p style="text-align: center;">Access</p> <ul style="list-style-type: none"> ✓ Hiking ✓ Bicycling ✓ Horseback Riding 	<p>Photographing-The best time to photograph wildlife is at dawn or dusk. A telephoto lens is important.</p> <p>Hiking-Hiking is the best way to see wildlife at the Charette Lakes Wildlife Area or other wildlife management areas.</p> <p>Bicycling-Allowed only on established roads.</p>
<p style="text-align: center;">Hunting and Fishing</p> <ul style="list-style-type: none"> ✓ Hunting ✓ Fishing 	<p>Horseback Riding-Horseback riding is allowed but opportunities are extremely limited.</p> <p>Camping-Primitive camping is allowed March 1- October 31.</p> <p>Hunting-Hunting is allowed by licensed and permitted hunters for waterfowl.</p>
<p style="text-align: center;">Closures</p> <ul style="list-style-type: none"> ✓ Yes 	<p>Fishing-Fishing is allowed March 1-October 31.</p> <p>Closures-Charette Lakes Wildlife Area is open March 1-October 31. It is closed November 1 -February 28 except for waterfowl hunting.</p>
<p style="text-align: center;">Facilities</p> <ul style="list-style-type: none"> ✓ Primitive camping ✓ Rest rooms ✓ No drinking water 	<p>Facilities-Charette Lakes Wildlife Area has primitive camping and rest rooms but not drinking water.</p>
<p style="text-align: center;">Fees</p> <ul style="list-style-type: none"> ✓ Yes 	<p>Fees-Hunters and fishermen must have appropriate licenses and permits. Wildlife viewers, photographers, hikers, bicyclists, and horseback riders must have a valid license or permit. See the Department's website www.wildlife.state.nm.us for more information.</p>
<p style="text-align: center;">Motorized Vehicles</p> <ul style="list-style-type: none"> ✓ Not allowed beyond the roadway and parking area 	<p>Motorized Vehicles-Not allowed beyond the roadway and parking area.</p>
<p>For more information on hunting and fishing rules and seasons, please read current hunting or fishing Rules and Information Booklets available on the Department's website, at Department offices, or from license vendors state-wide.</p>	