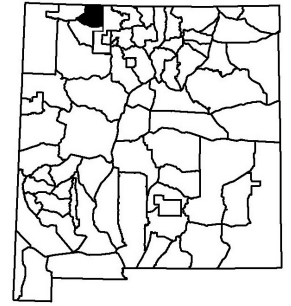




Providing New Mexico
and its wildlife

**Year-round
Excellent
Services**

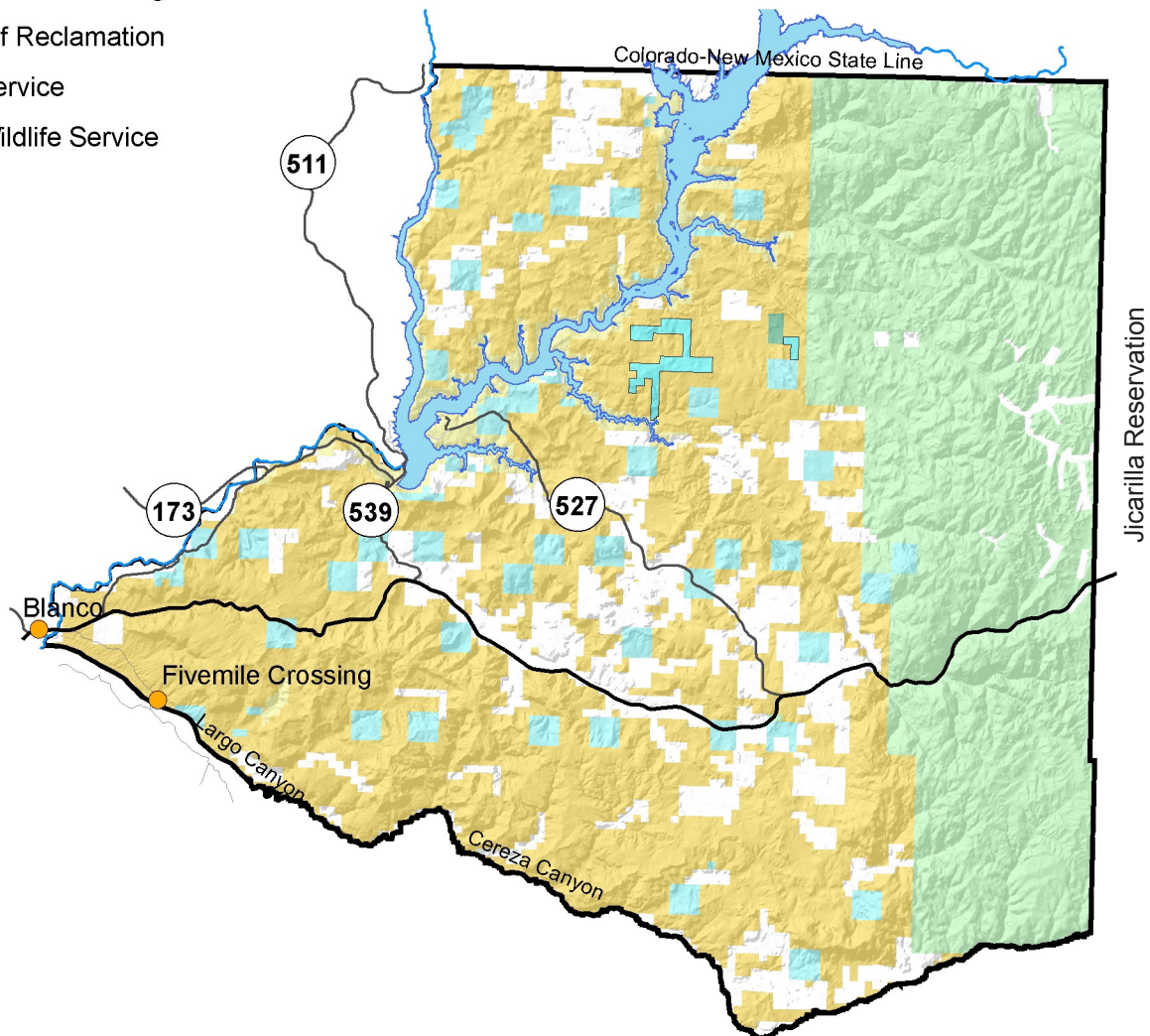
Game Management Unit 2B



New Mexico

Surface Ownership

-  Bureau of Land Management
-  Bureau of Reclamation
-  Forest Service
-  Fish & Wildlife Service
-  Private
-  State



GMU 2B: That portion of GMU 2 east and north of the following line: From the junction of the NM/CO state line and Pine River, then south along the Pine River to its junction with the San Juan River, then south and west along the San Juan River to its junction with Largo Canyon, then south and east along the central wash of Largo Canyon to its junction with Cereza Canyon, then south and east along the central wash of Cereza Canyon to the Jicarilla Apache Indian Reservation boundary.

Maps for GMU 2B

BLM Maps: Navajo Reservoir Quad.

US Forest Service Maps: Carson National Forest.

These and other maps may be found at NM Public Lands Information Center, (877) 851-8946, or visit <http://plimapcenter.org/NM/>.