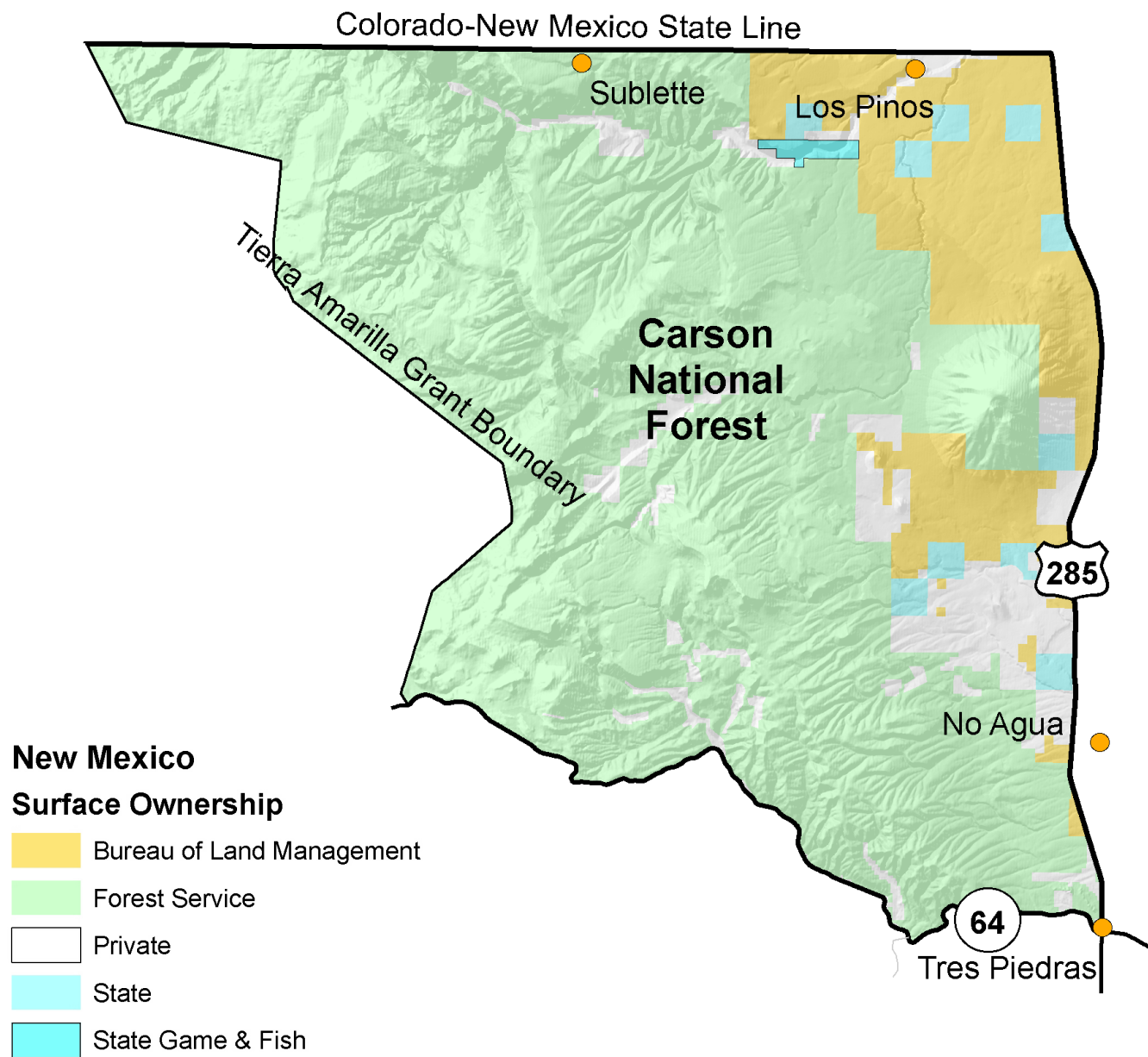
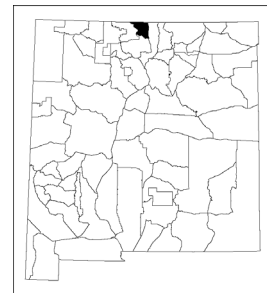




Providing New Mexico
and its wildlife

Year-round
Excellent
Services

Game Management Unit 52



GMU 52: Beginning at the intersection of US 64 and the east boundary of the Tierra Amarilla grant and running north along the eastern boundary of the grant to the Colorado-New Mexico state line, then east along the state line to its intersection with US 285, then south along US 285 to its junction with US 64 at Tres Piedras, then west along US 64 to its intersection with the east boundary of the Tierra Amarilla grant.

Maps for GMU 52

BLM Maps: Chama Quad and Wheeler Peak Quad.

US Forest Service Maps: Carson National Forest, Cruces Basin Wilderness.

These and other maps may be found at NM Public Lands Information Center, (877) 851-8946, or visit <http://plcmapcenter.org/NM/>.