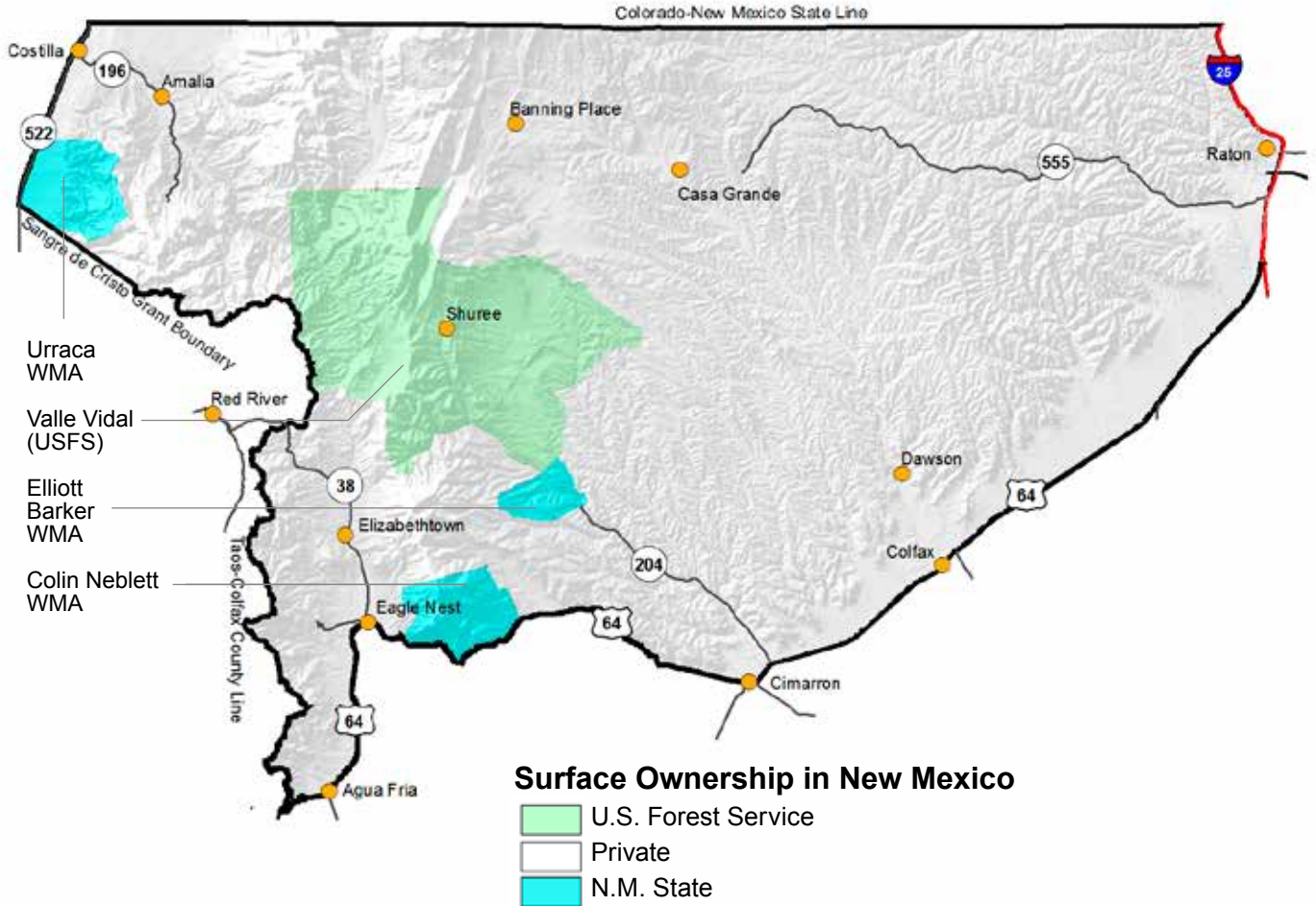




Game Management Unit 55A

New Mexico Department of Game and Fish

Conserving New Mexico's Wildlife for Future Generations



GMU 55A: That portion of GMU 55 beginning at the junction of NM 58 and US 64 at Cimarron and running west and south along US 64 to the Colfax-Taos county line at Palo Flechado pass; then north along the Colfax county line to the south boundary of the Sangre de Cristo grant; then north and west along the Sangre De Cristo grant's south boundary to NM 522 then north along NM 522 to the Colorado-New Mexico state line; then east along the state line to its intersection with I-25; then south along I-25 to its junction with US 64 thence southwest along US 64 to its junction with NM 58 at Cimarron.

Maps available for GMU 55A

BLM: Raton Quad and Wheeler Peak Quad. **U.S. FOREST SERVICE:** Carson National Forest. These and other maps may be found at N.M. Public Lands Information Center, (877) 851-8946, or visit <http://plcmapcenter.org/NM/>.