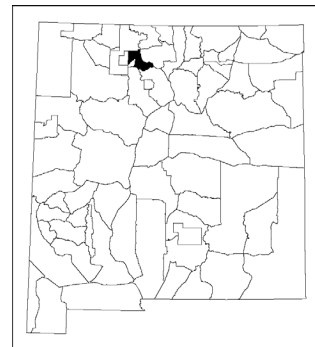




Providing New Mexico
and its wildlife

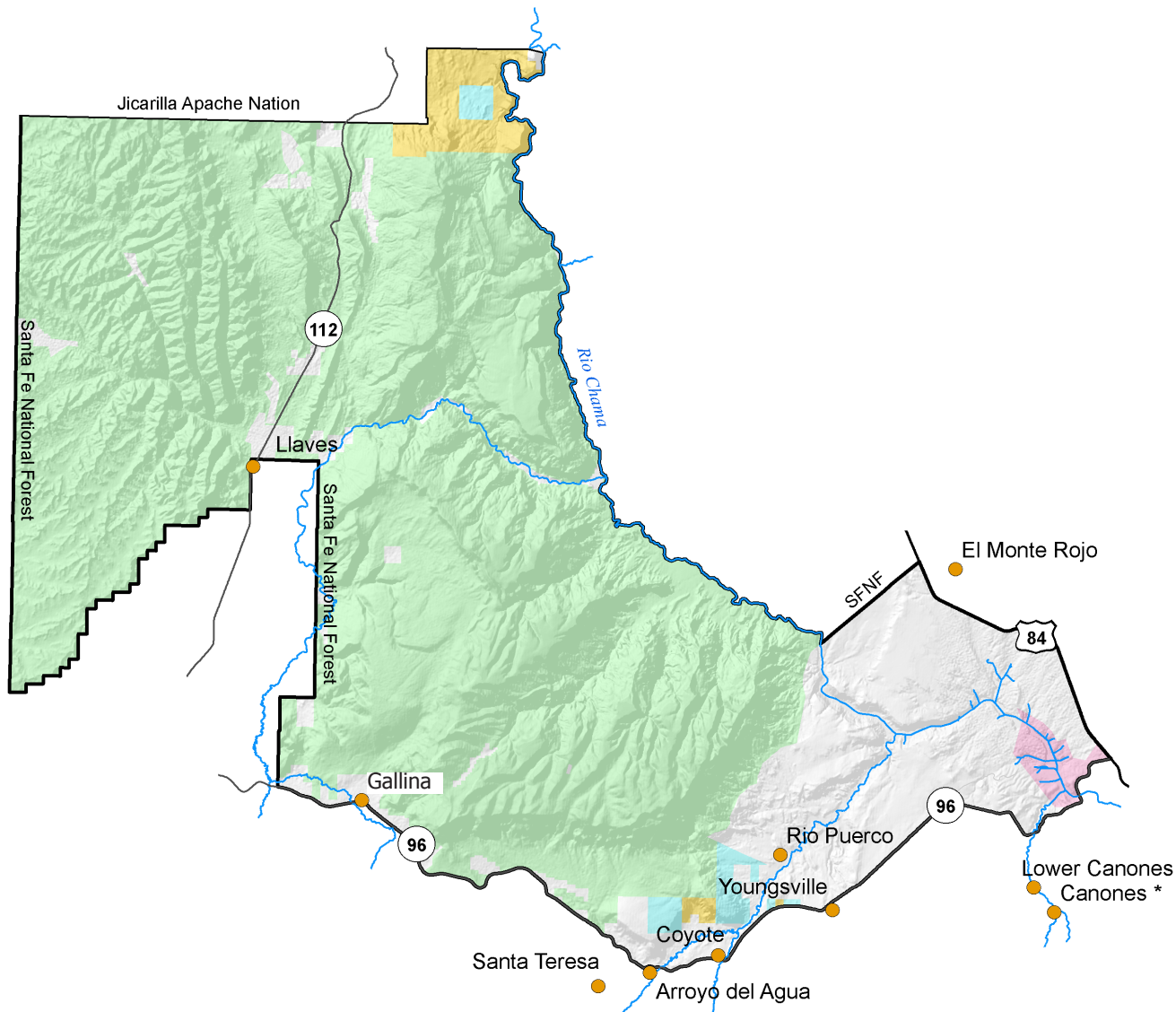
**Year-round
Excellent
Services**

Game Management Unit 5B



New Mexico

Surface Ownership



GMU 5B: (Boundary change) Beginning at the intersection of the east boundary of the Jicarilla Apache Indian reservation [and], the south boundary of the Tierra Amarilla grant and the Rio Chama, running south along the Rio Chama to its intersection with the Piedra Lumbre grant boundary line, then northeast along the Piedra Lumbre grant boundary line to its intersection with US 84, then south along US 84 to its junction with NM 96 northwest of Abiquiu, then west along NM 96 to its junction with the Santa Fe national forest boundary west of Gallina, then following the boundary north then west past Llaves then southwesterly to south of Lindrith then north along the forest service boundary line to its intersection with the Jicarilla Apache Indian reservation, then east along the boundary line to the junction of the reservation, the south boundary of the Tierra Amarilla grant and the Rio Chama.

Maps for GMU 5B

BLM Maps: Abiquiu Quad and Chama Quad.

US Forest Service Maps: Santa Fe National Forest.

These and other maps may be found at NM Public Lands Information Center, (877) 851-8946, or visit <http://plicmapcenter.org/NM/>.