



# Gould's Turkey and Gila Monster Recovery Plans

**April 5, 2017**

**New Mexico State Game Commission Meeting  
Artesia, NM**

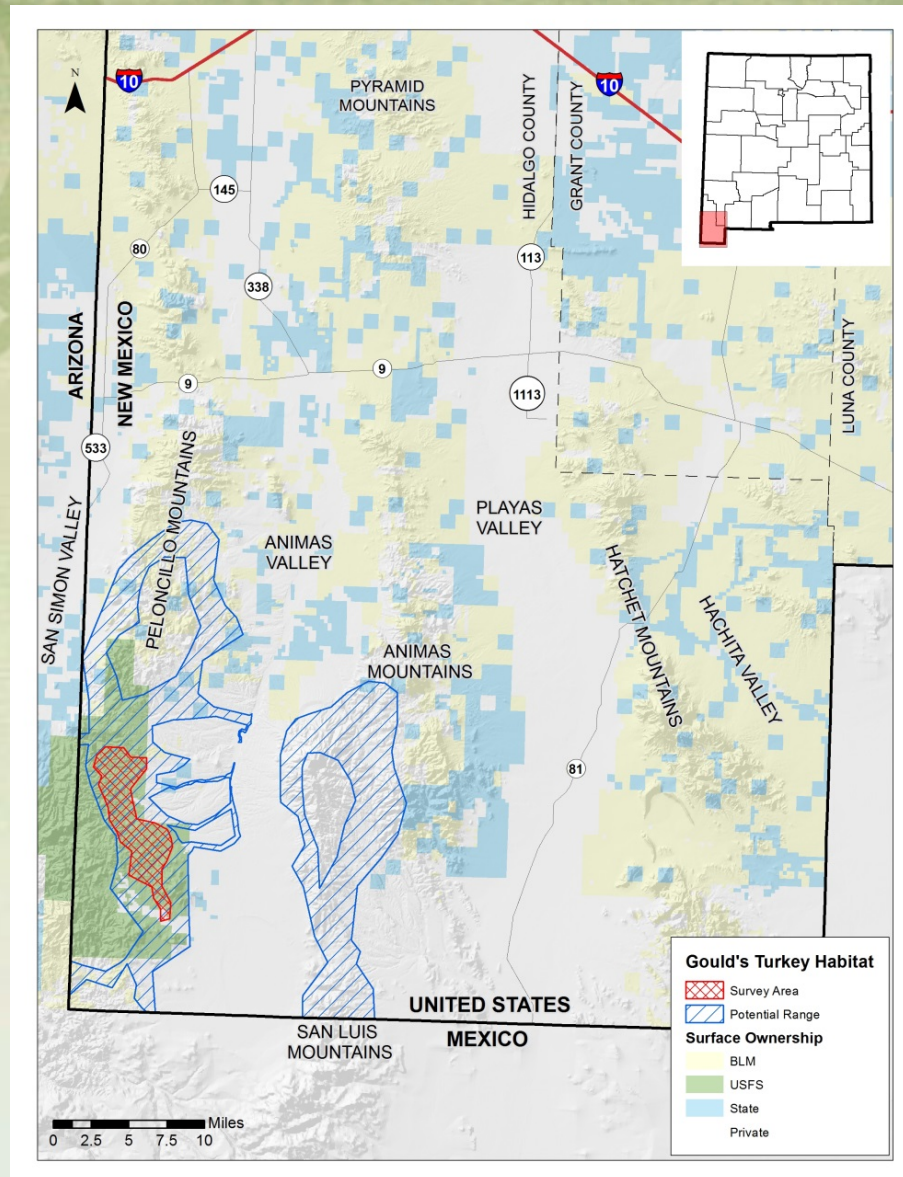


## **NM Gould's Turkey Habitat**

- Range confined to 'bootheel' (Mexican subspecies).
- Inhabits Madrean Evergreen Woodland habitat type.
- Most habitat in riparian areas.
- Requires mast-producing trees & shrubs, grasses, tall roost trees, water sources.



# NM Gould's Turkey Distribution



# Gould's Turkey Listing Background



- Listed as threatened under WCA in 1975.
- Limited habitat available in NM, but sufficient to maintain the species.
- Recent augmentations successful.





# **Public Participation in Recovery Planning for Gould's Turkey**

**June 2016:**

- Recovery plan development announced via press release and email.
- Public meetings in Las Cruces (7 attendees) and Silver City (5 attendees).
- Advisory Committee formed (9 members).

# Gould's Turkey

## Recovery Plan Contents

### Plan Objective:

- Maintain a total minimum population of 175 Gould's turkeys in the Peloncillo Mountains either through natural processes alone or in combination with periodic strategic augmentation.

### Plan Contents:

- Natural history summary
- Historic and current distribution and abundance
- Habitat assessment
- Threats to persistence
- Recovery issues and management strategies.

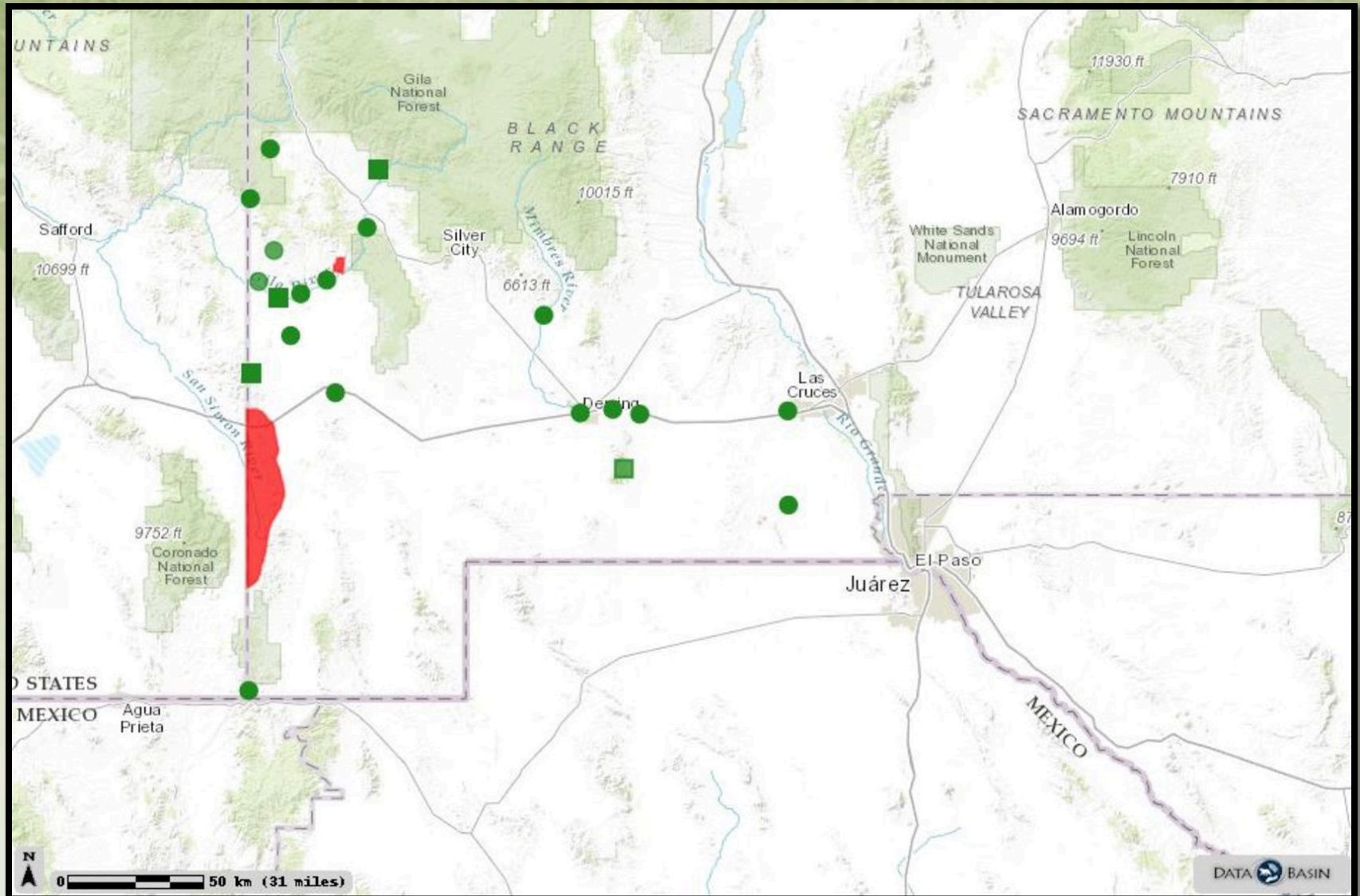


## NM Gila Monster Habitat & Habits

- In New Mexico, occurs in Chihuahuan desert scrub & desert grassland habitats.
- Arroyos important – travel & foraging.
- Nest predator: mammals, birds, reptiles.
- Spends  $\leq 95\%$  of life in subsurface shelters.



# NM Gila Monster Distribution







# **Gila Monster Listing Background**

- Listed as endangered under WCA in 1975.
- Principal threats: localized illegal collecting and road mortality.
- Distribution inadequately documented.



# **Public Participation in Recovery Planning for Gila Monster**

**June 2016:**

- **Recovery plan development announced via press release and email.**
- **Public meetings in Las Cruces (7 attendees) and Silver City (5 attendees).**
- **Advisory Committee formed (16 members).**



# **Gila Monster**

## **Recovery Plan Contents**

### **Plan Objectives:**

- **Conduct field studies to evaluate current status & population viability in core historic range.**
- **Establish priorities for habitat & population security and maintenance.**

### **Plan Contents:**

- **Natural history summary**
- **Historic and current distribution and abundance**
- **Habitat assessment**
- **Threats to persistence**
- **Recovery issues and management strategies.**



# **Final Steps in Gould's Turkey & Gila Monster Recovery Planning**

- **January-February 2017: Draft recovery plans open for public comment. Announced on website and in news releases.**
- **April 2017: Present final Gould's Turkey and Gila Monster recovery plans to Commission for approval.**



# ***Questions?***

