

Pronghorn

19.31.15 NMAC

March 4, 2022

New Mexico State Game Commission Meeting



Summary of previous rule change

- APLUS: Public & private hunters assigned to ranches
- 2019-2022 Pronghorn Rule
 - Similar to deer hunting and secondary mgmt. zone for elk
 - Public draw hunters allowed to hunt public land within the drawn GMU
 - Private land licenses over the counter (OTC).



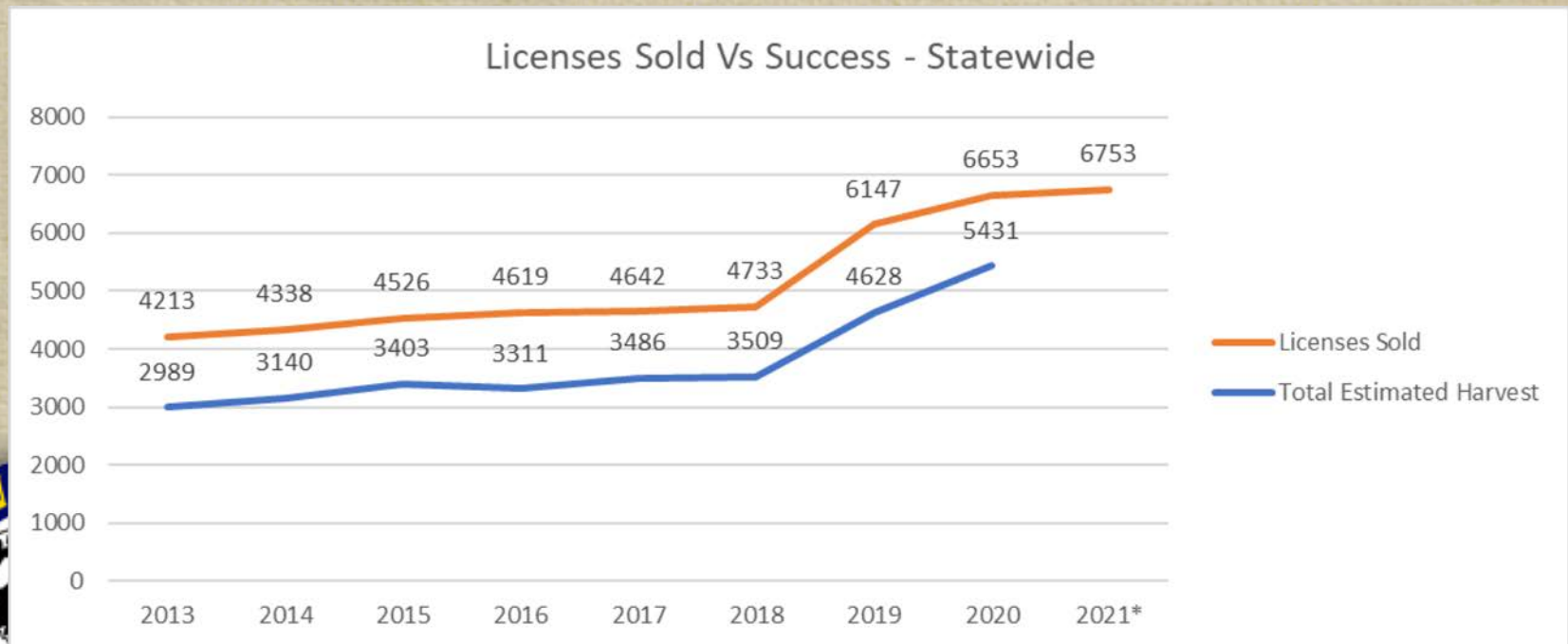
Summary of previous rule change

- Addressed unhunted populations and high B:D ratios in some locations
- Increased public draw licenses by 22%
- Increased resident draw licenses by 26%



Pronghorn Biology

- Statewide population estimate: ~70,800 (midpoint)
- 36 bucks: 100 does: 25 fawns (2019-2021 survey data)



Pronghorn statewide license sales



- Public draw licenses sold in 2018: 1,996
- Public draw licenses sold in 2021: 2,426
- 2018: 2,505 resident licenses sold
- 2021: 3,653 resident licenses sold



Pronghorn Biology: NE Area

- Population estimate: ~45,000
 - (stable to slightly ↑)
- 32 bucks*: 100 does: 27 fawns
- Predicted License Sales (2018):
 - 2,000 Private; 1035 Public
- Observed average license sales 2019-2021:
 - 2,031 Private; 1042 Public



Pronghorn data: SE Area

- Population estimate: ~20,000 (stable)
- 35 bucks: 100 does: 31 fawns
- Predicted License Sales (2018)
 - 985 Private; 805 Public
- Average License Sales 2019-2021:
 - 1,737 Private; 820 Public
- Actively restoring populations (fence modifications & translocation)
- Working with Melrose AFR in GMU 32 to open up hunting



Pronghorn data: SW Area

- Population estimate: ~ 3,000 (stable to slightly decreasing)
- 58 bucks*: 100 does: 17 fawns
- Predicted License Sales:
 - 150 Private; 330 Public
- Average License Sales 2019-2021:
 - 214 Private; 338 Public



Pronghorn data: NW Area

- Population estimate: <1,000 (slightly decreasing)
- Ratios: N/A - Due to low survey abundance
- Predicted license sales (2018):
 - 70 Private; 113 Public
- Average license sales 2019–2021:
 - 72 Private; 117 Public



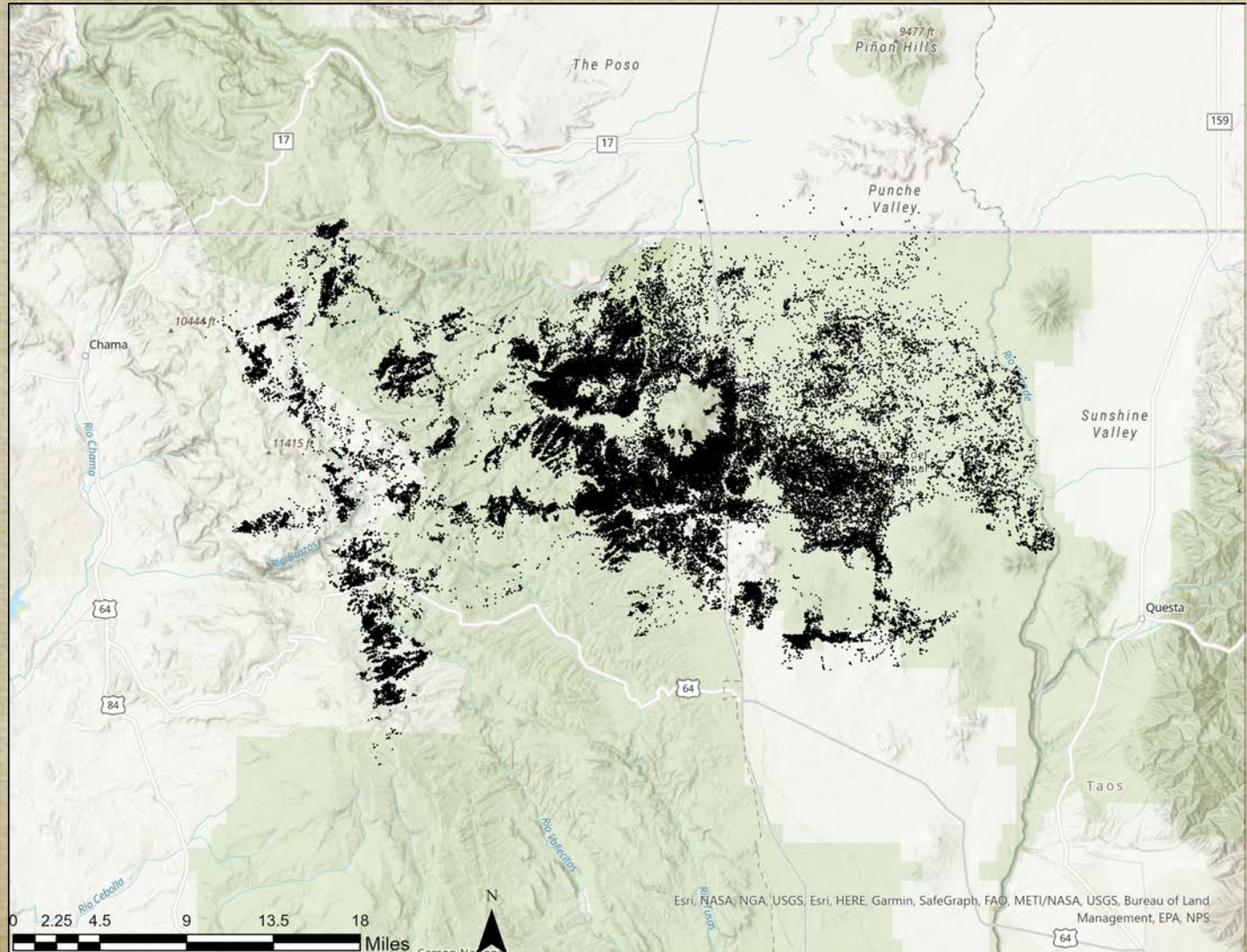
Pronghorn data: Tres Piedras



- Population estimate: <500 (Stable)
- 50 bucks: 100 does: 12 fawns
- Expected license sales:
 - 50 Private; 140 Public
- Average license sales 2019-2021:
 - 66 Private; 141 Public



Pronghorn data: Tres Piedras



Ranch Wide Pronghorn Program

- 7 Ranches enrolled
 - 43 Licenses issued in 2021
 - Opens 37,700 ac to public pronghorn hunting in units 12, 15, 16, 33, 50



Pronghorn Antelope 19.31.15 NMAC

- Small license number adjustments based on aerial surveys, harvest reports, & public comment
- Receiving public comment



Pronghorn Antelope 19.31.15 NMAC

	2023	2024	2025	2026
Archery	Aug. 19-27	Aug. 17-25	Aug. 23-31	Aug. 22-30
Youth hunt (ES)	Sept. 30 - Oct. 2	Sept. 28-30	Sept. 27-29	Sept. 26-28
Rifle 1*	Sept. 30 - Oct. 2	Sept. 28-30	Sept. 27-29	Sept. 26-28
Rifle 2	Oct. 7-9	Oct. 5-7	Oct. 4-6	Oct. 3-5
MIP	Oct. 7-9	Oct. 5-7	Oct. 4-6	Oct. 3-5
Rifle 3	Oct. 14-16	Oct. 12-14	Oct. 11-13	Oct. 10-12
Special hunts:				
Late Youth FIM hunts				
Muzzleloader hunt 1 (GMU 29)	Sept. 30 - Oct. 2	Sept. 28-30	Sept. 27-29	Sept. 26-28
Muzzleloader hunt 2 (GMU29)	Oct. 7-9	Oct. 5-7	Oct. 4-6	Oct. 3-5
GMUs 4, 50, 52 - Youth ES	Aug 5-7	Aug 3-5	Aug 2-4	Aug 1-3
GMUs 4, 50, 52 - Archery	Aug 8-16	Aug 6-14	Aug 5-13	Aug 4-12
GMUs 4, 50, 52 - Muzzle 1	Aug 19-21	Aug 17-19	Aug 16-18	Aug 15-17
GMUs 4, 50, 52 - Muzzle 2	Aug 26-28	Aug 24-26	Aug 23-25	Aug 22-24
WSMR				
McGregor				
Melrose				
Roswell FIM hunt	Dec 1 - 15	Dec 1 - 15	Dec 1 - 15	Dec 1 - 15



Questions

