

# ELK - 19.31.14 NMAC



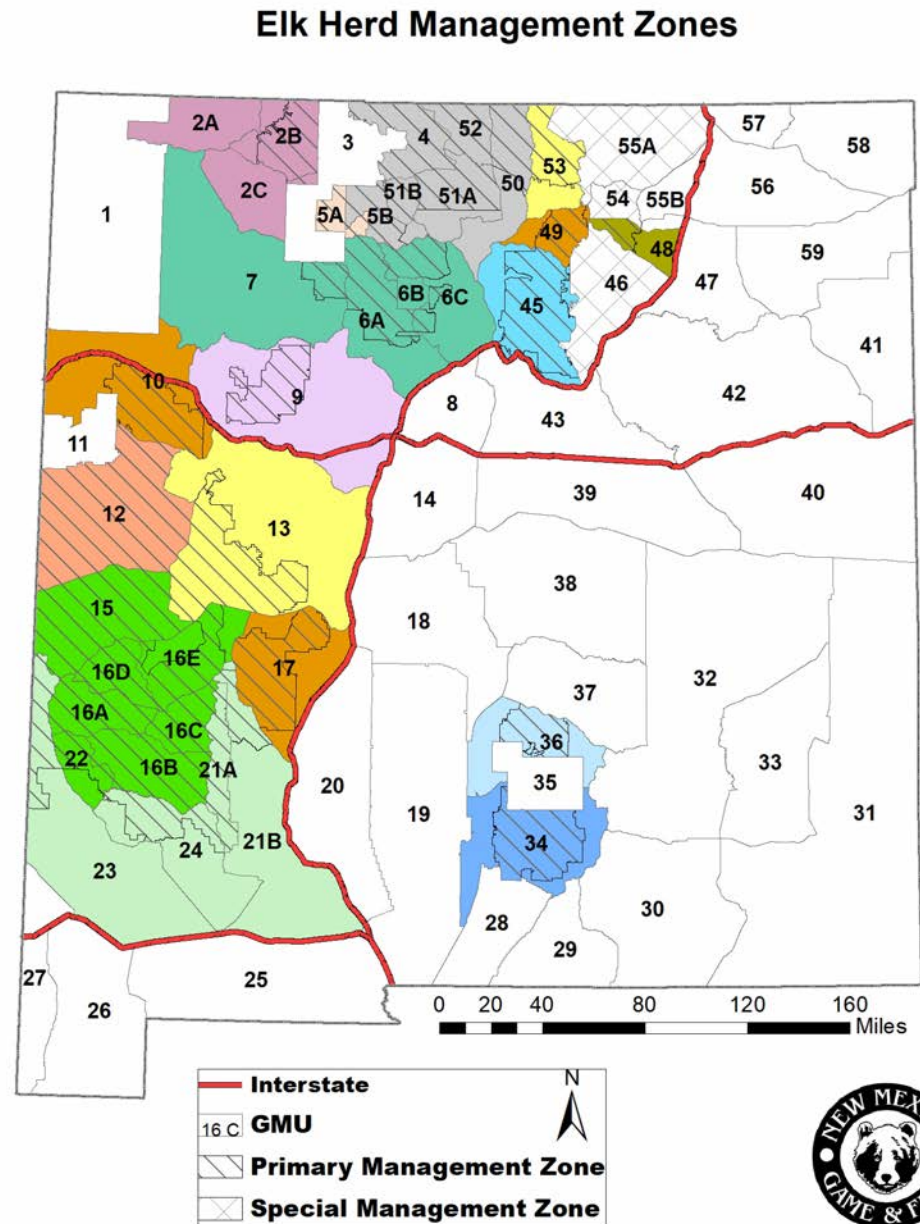
April 11, 2022  
New Mexico State Game Commission  
Santa Fe, NM



Primary Management Zone  
(previously COER) – 32 GMUs

Special Management  
Zone – 3 GMUs

Secondary Management  
Zone





# 2021 Elk Harvest Summary

- Statewide licences sold/converted → 38,179
  - 80% of hunters submitted harvest reports
    - 39% successful harvest
- Estimated statewide harvest
  - Bulls → 9,076      Cows → 6,442
- Satisfaction rating = 3.71



Photo: Nick Forman





# Proposed Rule Changes

- Adjust hunt seasons for calendar dates (5-day hunts, begin Saturday)
- Adjust licenses to reflect changes in biological and harvest trends
- Maintain current management objectives in PMZ



Photo: Travis Zaffarano





## Optimal Opportunity Management (OOM):



## Quality Hunt Management (QHM):





# Northwest Region

- **GMU 2 (San Juan Herd)**: Stable to Slightly Increasing (35:100:32)
  - Consider increasing 'A' and 'MB' licenses as harvest and success increase
- **GMU 5A (Lindrith Herd)**: Stable (35:100:32)
  - No changes recommended
- **GMU 9 (Mt. Taylor Herd)**: Stabilizing (26:100:28)
  - Herd ratios increasing, but slowly – buffer population from harvest to support herd growth/rebound – no change to licenses
- **GMU 10 (Zuni Herd)**: Stable (35:100:32)
  - Consider shifting Dec 'A' hunt to earlier dates (before winter FS road closure) to improve success/hunter access





# North Central Region

- **GMUs 4, 5B, 50, 51, 52 (Chama/San Antonio Herd)** Stable (38:100:35)
  - Consider shifting GMU 50 'YE' hunt licenses to other GMUs within herd unit

## Jemez Region

- **GMUs 6A-C, 7 (Jemez Herd)**: Stable (53:100:33)
  - Maintain licenses as recommended during last rule cycle
  - Eliminate 'MI' hunt in VCNP



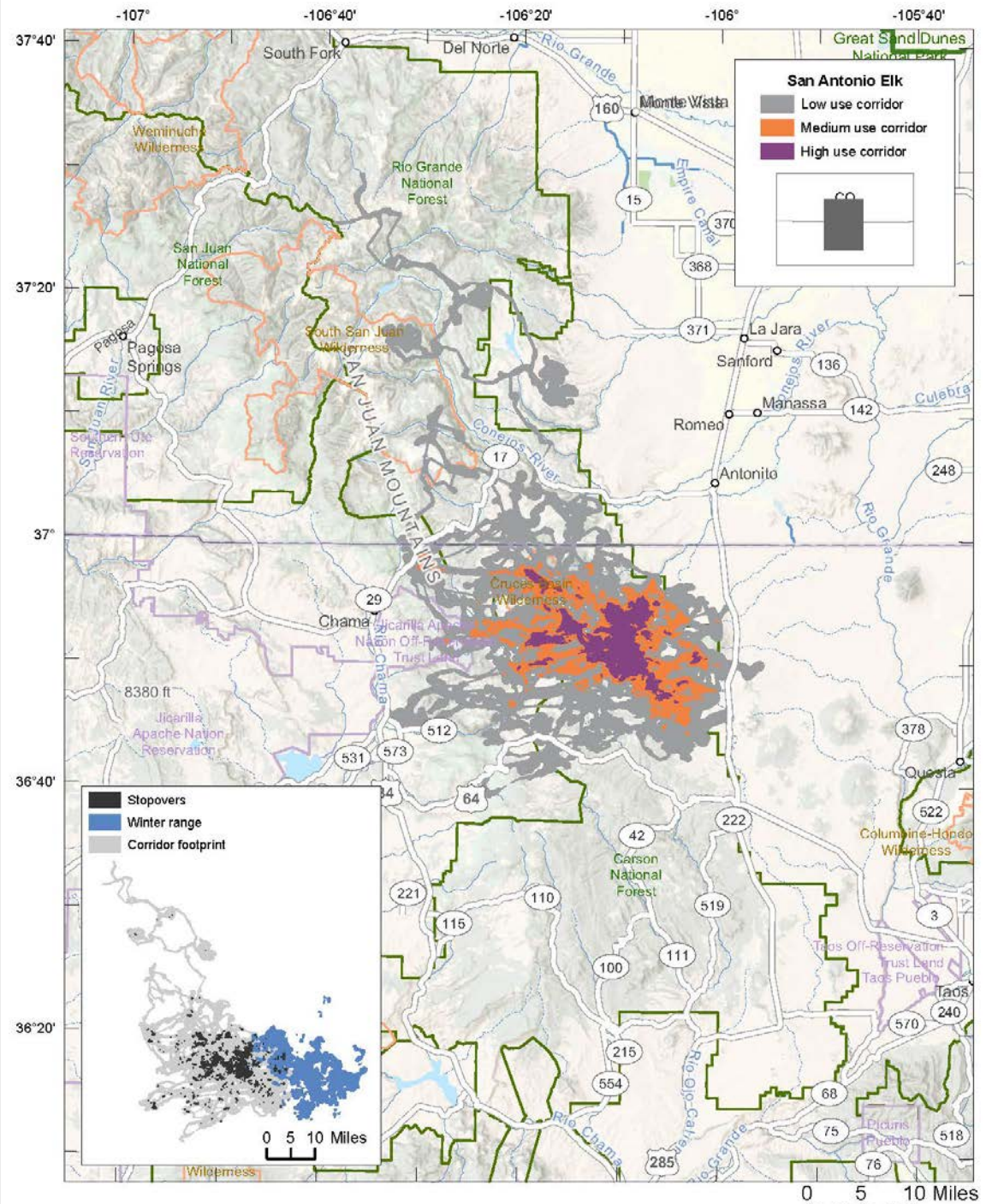
Photo: Travis Zaffarano



# Northcentral Migrations

## San Antonio Herd

N=31 Cow elk  
Between 2019-2022





# Northcentral Migrations

## Chama Herd

### Project Total:

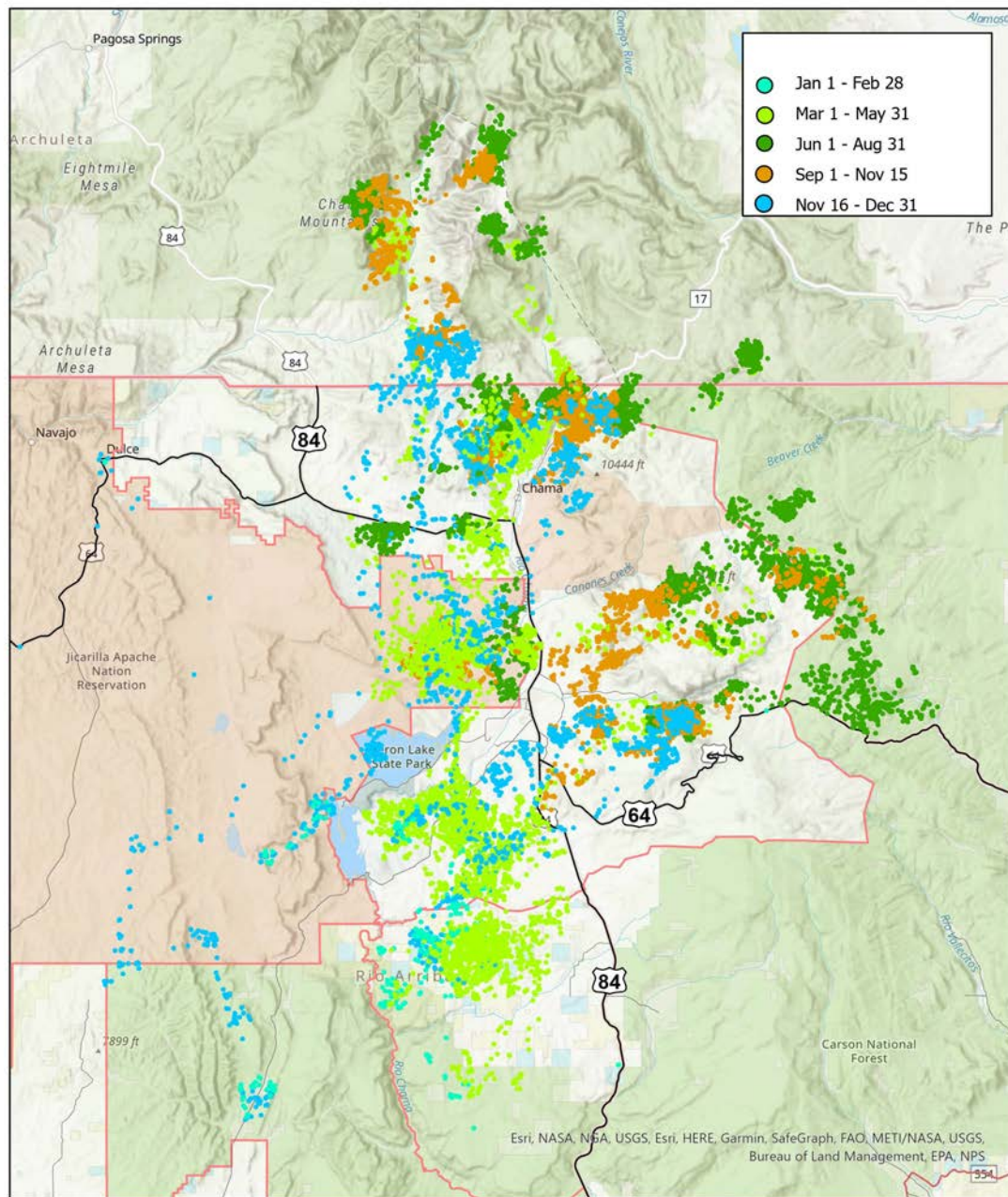
N= 41 Cow elk  
Between 2020-2022

### Shown Map:

n= 8 cow elk  
2021 data



## Long Distance Migration Elk





# Southwest Region

- **GMU 12 (Fence Lake Herd):** Stable(41:100:46)
  - No changes recommended
- **GMU 13 (Datil Herd):** Stable (40:100:37)
  - Expand PMZ to include public lands near El Malpais National Monument
- **GMU 17 (San Mateo/Magdalena Herd):** Stable (51:100:38)
  - Review current PMZ boundary



Photo: Travis Zaffarano





# Southwest Region

- **GMUs 15, 16A-E (Greater Gila Herd):** Stable (33:100:27)
  - Decrease 'MB' licenses across GMU 16B, 16C, and 16E as harvest, success, satisfaction decline since 2016/2017 for many hunts.
  - Review Current PMZ boundary 16E
- **GMUs 21A-B, 23, 24 (Lesser Gila Herd):** Stable (39:100:37)
  - Establish 'A' hunt south of HWY 78 to increase harvest on/near Burro Mt
  - Consider shifting muzzleloader and rifle hunt dates later to when elk are present
  - Review Current PMZ boundary in 21B





# Southeast Region

- **GMU 34 (Sacramento Herd):** Increasing (52:100:39)
  - Increasing number of 'A' licenses as well as considering additional 5-day 'A' hunt in December.
  - Consider shifting entire GMU to SMZ
    - Increased harvest potential on private lands
    - Maintain public draw hunts, consider increased licenses
- **GMU 36 (Ruidoso Herd):** Stable to Slightly Increasing (66:100:43)
  - Consider increasing 'MB' licenses (all weapon types)
  - Change 'MB' licenses to 'ES' licenses on public and private lands
  - Create additional 'A' hunt mid-December



Photo: Travis Zaffarano



# North East Region

- **GMU 45 (Pecos Herd):** Stable (35:100:32)
  - No changes recommended
- **GMU 48 (Whites Peak Herd):** Stable (35:100:32)
  - Redistributing Archery licenses
- **GMU 49 (Penasco Herd):** Stable (35:100:32)
  - No changes recommended
- **GMU 53 (Ute-Midnight-San Cristobal Herd)** Stable (34:100:24)
  - Remove 'N. Sunshine Valley Road' hunt from GMU 53 as success/satisfaction/need for this hunt have declined.





# Secondary Management Zones

- **GMU 30:** Increase licenses available through public draw
  - Elk populations increasing in Guadalupe Mts and western GMU 30
- **GMU 57/58:** Create archery hunt opportunity
  - Elk populations increasing on forested land/foothills near CO border



Photo: Nick Forman





# Other Recommendations

- **GMU 46:** Shift from SpMZ to SMZ
  - Elk are becoming more resident
  - SMZ would allow more flexibility for harvesting elk while present on property
- **Youth Encouragement Hunts:** Change license sales structure
  - Reduce # days before seniors can purchase licenses
  - OR Change later license sales to all youth and remove sale to seniors





# Questions?



Comment on Proposals:  
[DGF-Elk-Rule@state.nm.us](mailto:DGF-Elk-Rule@state.nm.us)

Photo: Nick Forman

