

Deer

19.31.13 NMAC

April 11, 2022

New Mexico State Game Commission Meeting

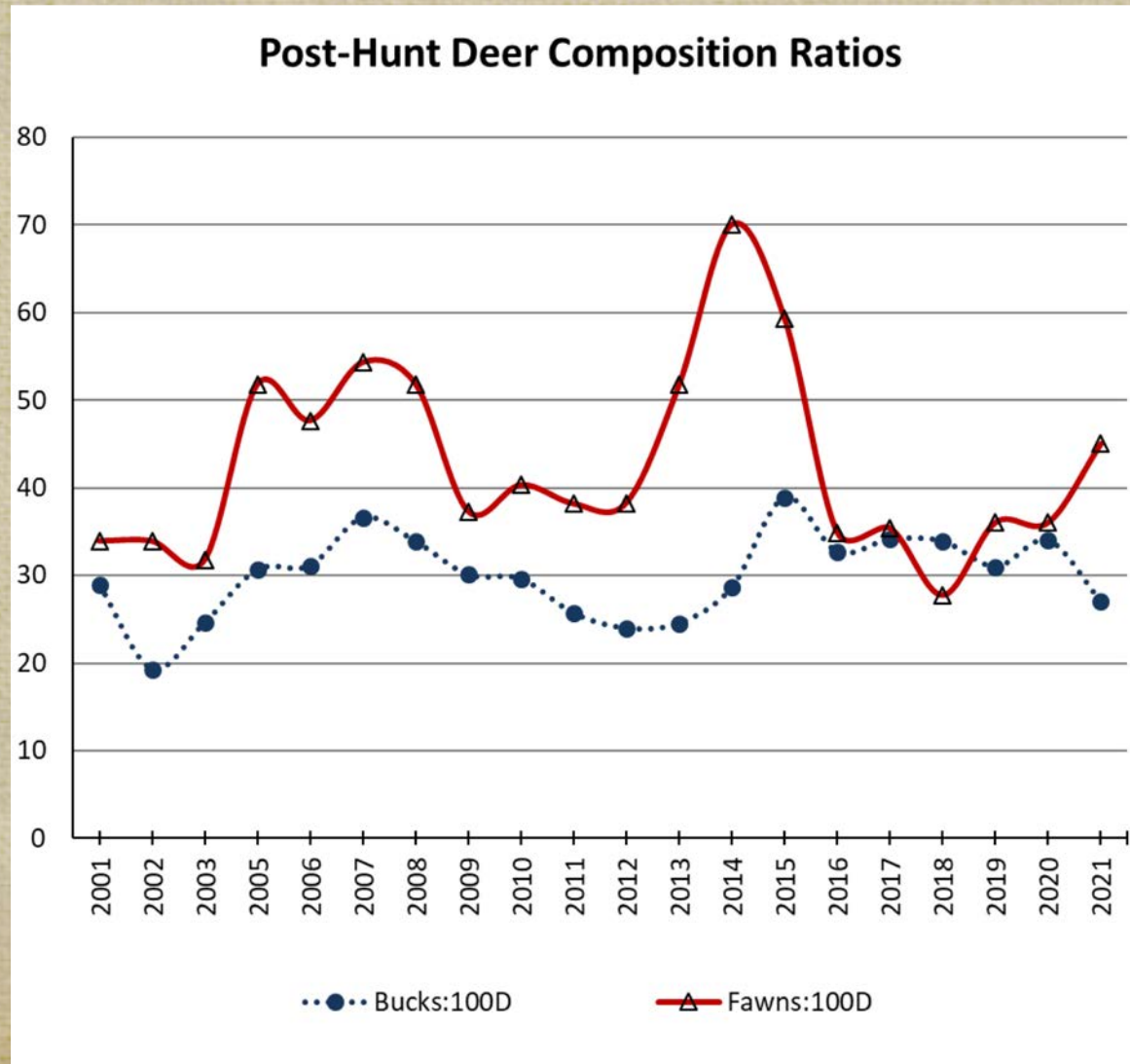


Deer Biology

- Statewide population estimate: ~80,000-100,000
- Population growth driven by female and fawn survival
- Buck harvest not limiting to population growth
- >35 fawns:100 does over the long-term required for stable populations
- 5-Year Statewide Average: 32 bucks:100 does:36 fawns (2017-2021 survey data)



Statewide Composition Ratios



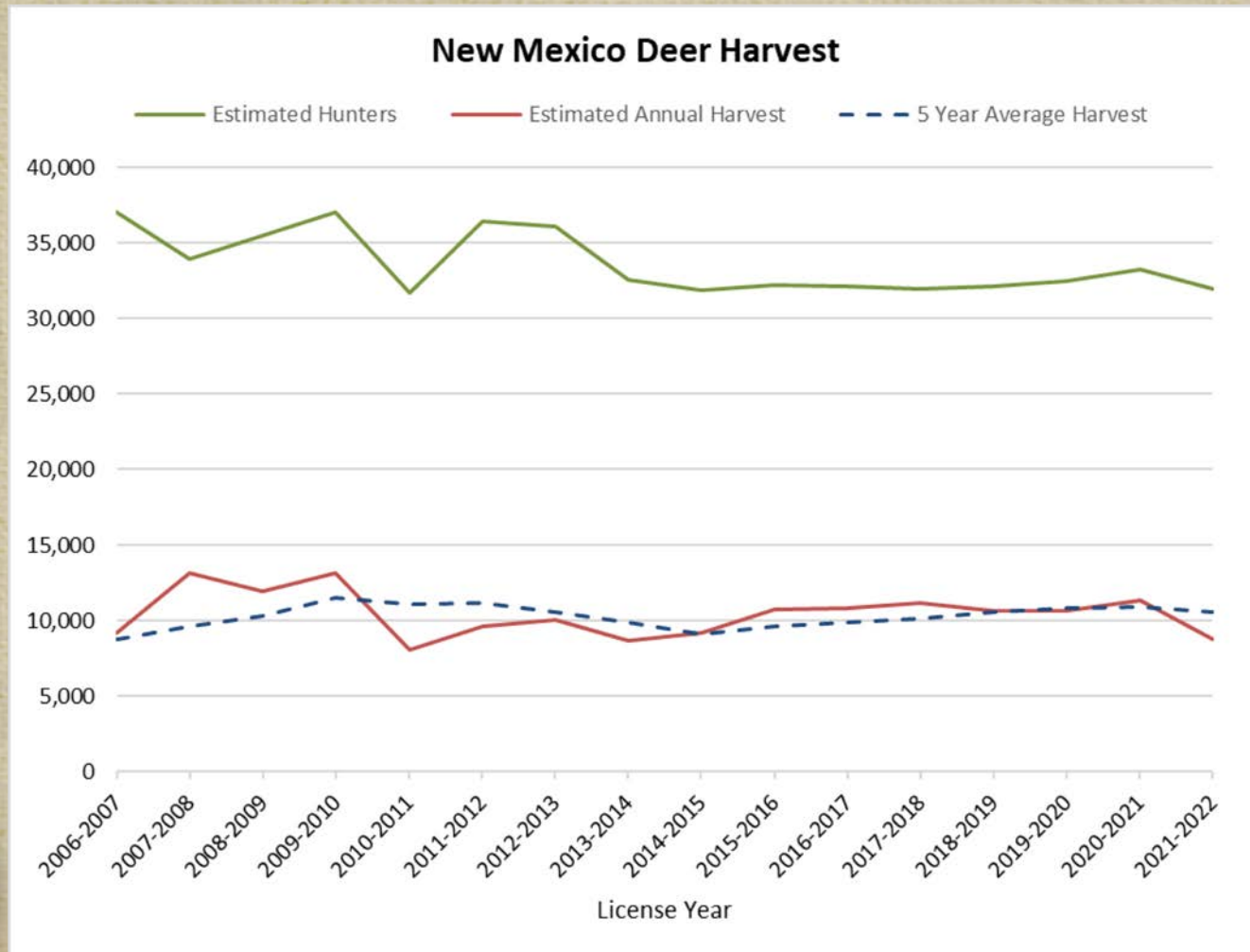
2021-2022 Deer License and Harvest



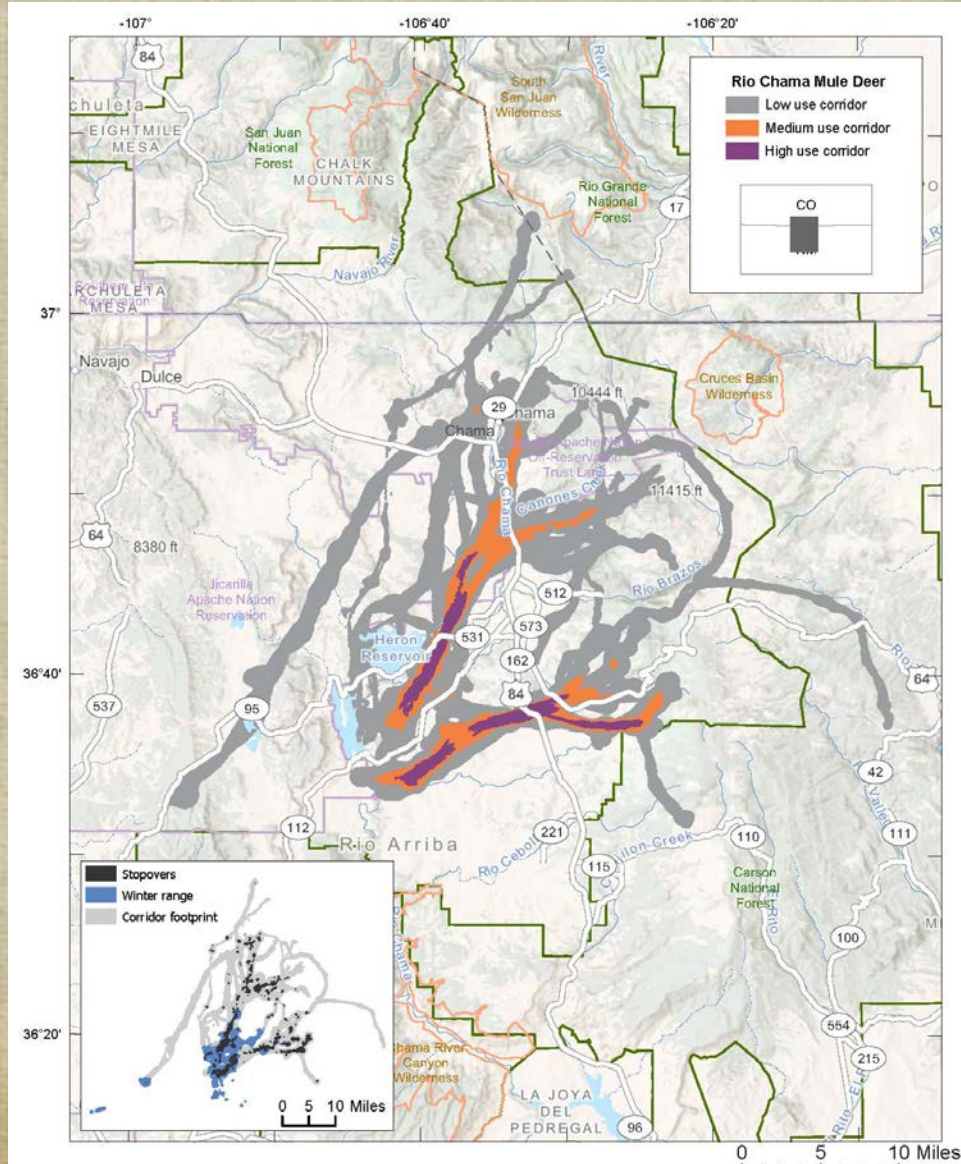
- 37,182 licenses sold
 - 99% are for bucks
- 85% of hunters reported
- 28% successful in harvesting
- Estimated statewide harvest
 - Bucks = 8,689; Does = 138
- Satisfaction rating = 3.2



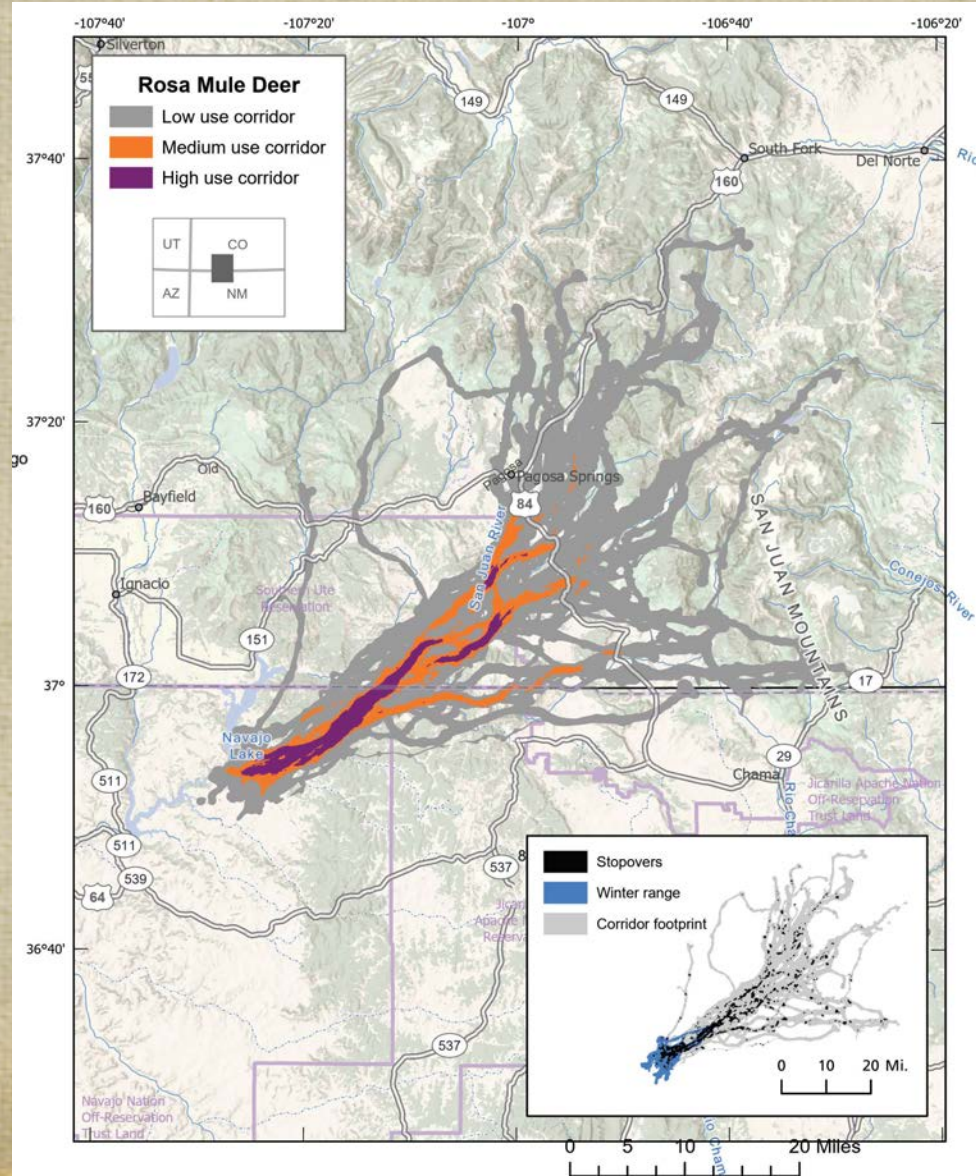
Statewide Deer License and Harvest



Deer Migration Mapping



Deer Migration Mapping



Management Strategies

- Standard Hunts (also defined as Opportunity Hunts)



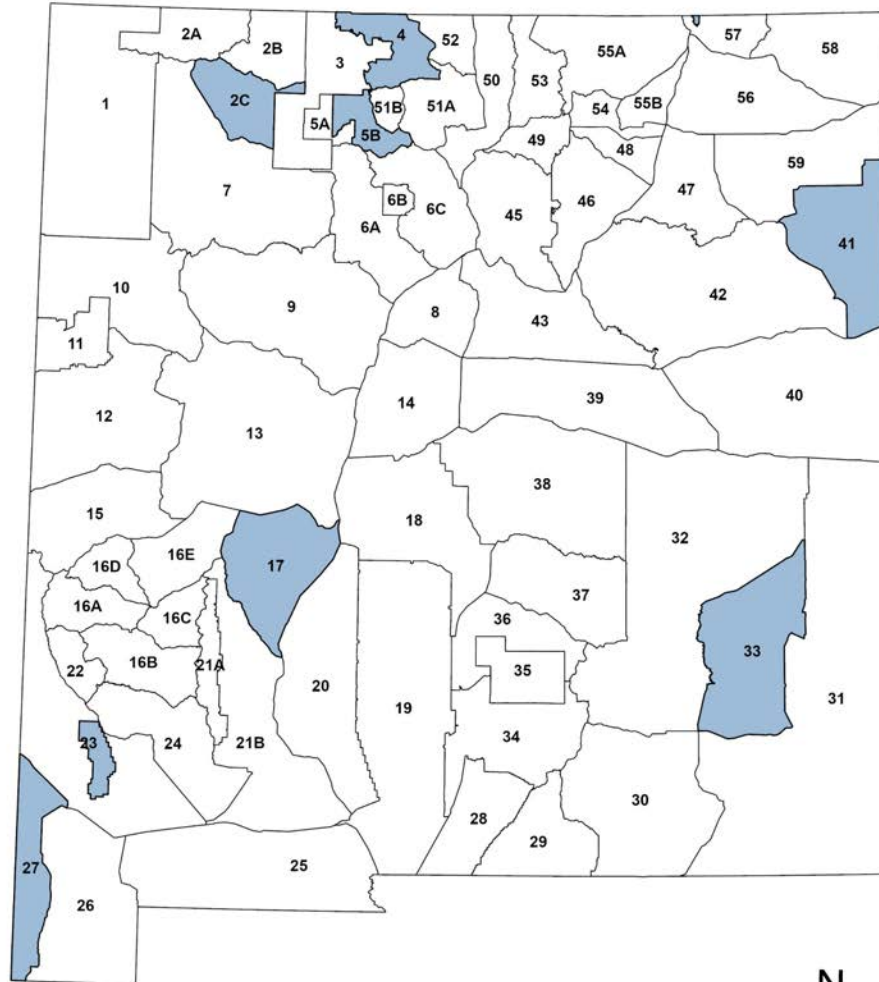
Management Strategies

- Quality Hunts (defined in rule)





Quality Deer Hunt Areas



0 20 40 80 Miles

Created 6 April 2022



Data Collection/license determination

- Post hunt surveys
- Trends in harvest success and hunter satisfaction
- Try to maintain consistency in license allocations



Proposed Adjustments: NW Area

- Reduce licenses in 2B
- Create October YO hunt in 2A & 2B; move most licenses from November to October.
- GMUs 7&9 – Create January archery hunt
- Designate GMU 8 as a Quality Unit



Proposed Adjustments: SW Area

- Add second hunt code for WSMR
- Add new hunts where deer populations have increased
 - GMUs 16, 21, 22, 26 – FAWTD rifle hunts
 - GMU 27 – September FAMD & FAWTD archery hunts
- Open River Ranch and Double E WMAs to deer hunting



Proposed Adjustments: SE Area

- Reducing license numbers
 - GMU 34 and potential reductions in 29, 33, and 39
 - Analyzing data for licenses recommendations in remaining GMUs
- Remove Huey youth antlerless hunt
- Move hunts in 34 to minimize overlap of weapons used or species hunted
- Remove language “Excluding Fort Stanton”
- Open Pipkin Ranch to deer hunting



Proposed Adjustments: NE Area

- Adjust draw license numbers based on biological data, management goals, & public comment
- Add ESWTD hunt in 55A, 55B



Questions



Comment on Proposals:
DGF-Deer-Rule@state.nm.us

