

Turkey

19.31.16 NMAC

April 11, 2022

New Mexico State Game Commission Meeting

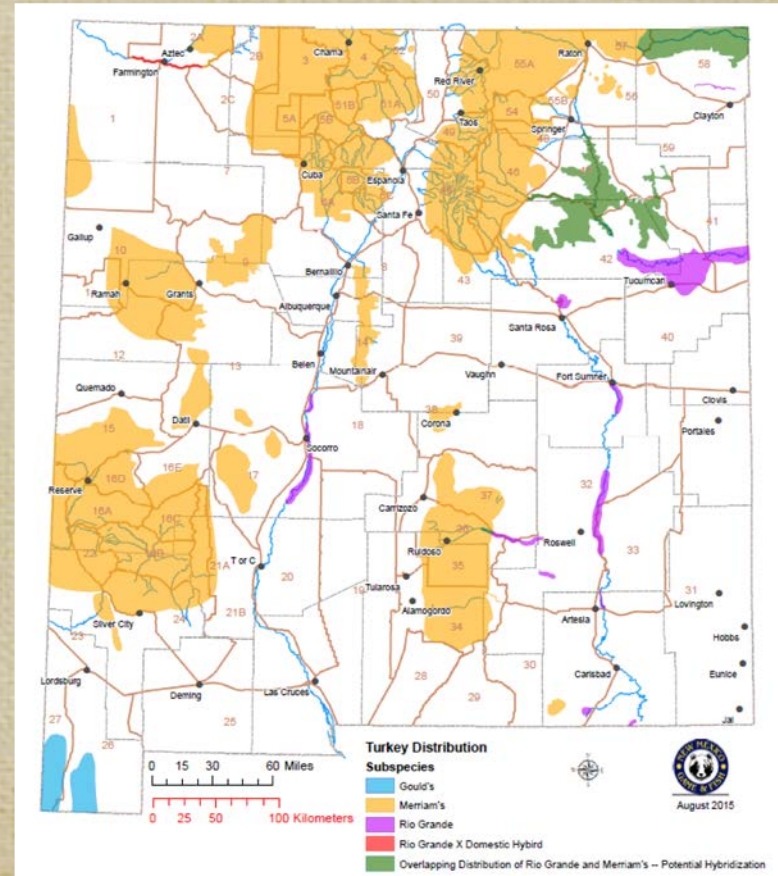
Santa Fe, NM



Turkey Biology

Three Subspecies in New Mexico

- Merriam's (Mountainous)
- Rio Grande (River valleys)
- Gould's (Bootheel)



Turkey Biology

- **Populations vary with environmental conditions**
- **Spring hunting harvest is primarily males, and one male can breed many hens**
- **Fall hunting has the potential to additive mortality on hens**



Breeding Activity- New Mexico

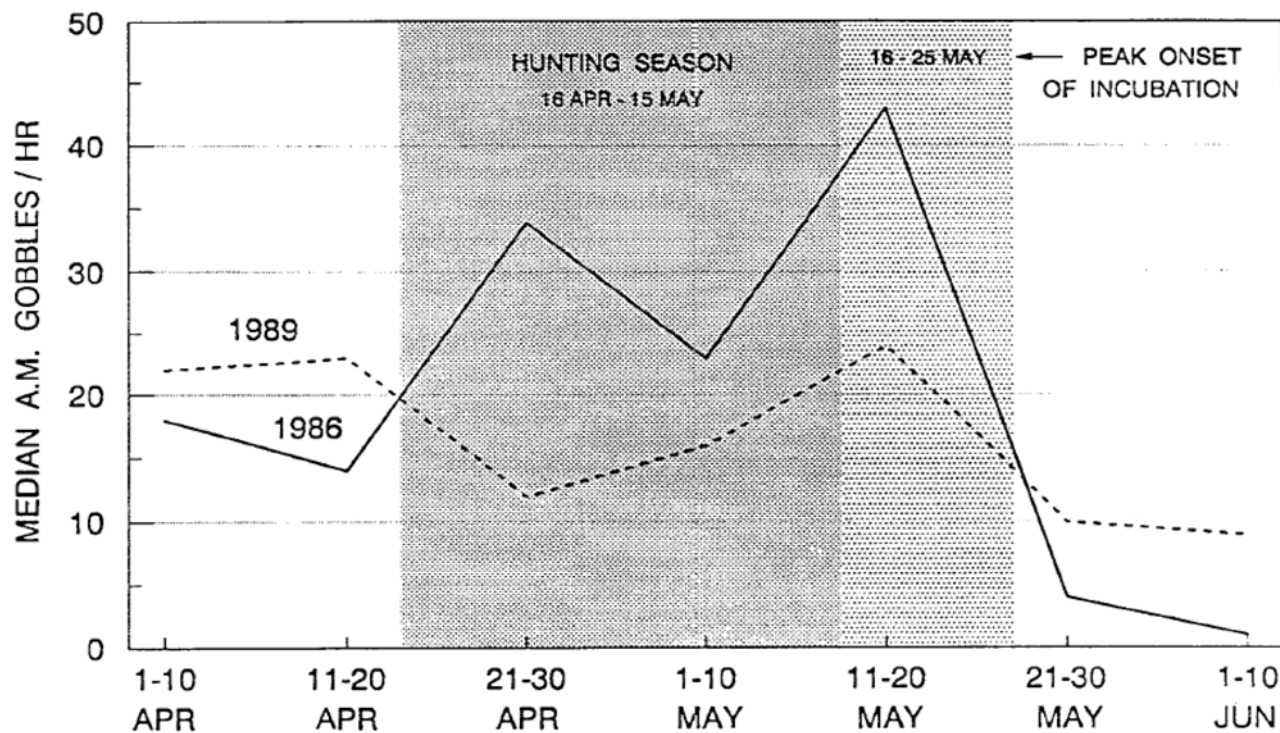


Fig. 1. Chronologic distribution of gobbling activity of adult male Merriam's wild turkeys in Colorado and New Mexico.

Hoffman, R. W. 1990



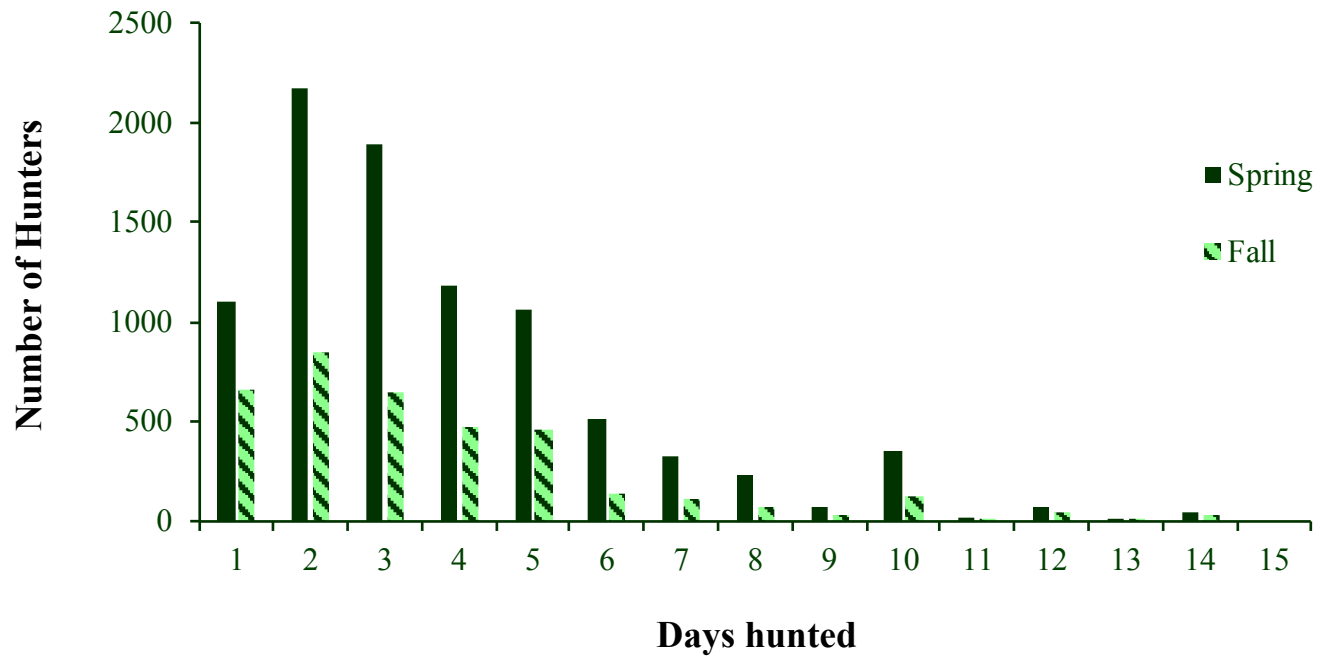
Hunting Results

Year	Estimated # of Spring Hunters	Estimated Total Spring Harvest	Spring Harvest Success	Estimated # of Fall License Hunters	Estimated Total Fall Harvest	Fall Harvest Success
2014	8,676	2,395	26.3%	2,571	675	26.3%
2015	8,220	2,607	25.8%	2,844	680	23.9%
2016	8,386	3,036	29.0%	2,775	536	19.3%
2017	8,674	3,281	29.9%	3,467	1,030	29.7%
2018	11,171	4,007	28.2%	3,154	508	16.1%
2019	8,919	2,960	26.4%	3,133	824	26.3%
2020	10,261	2,600	20.9%	4,258	837	19.7%



Hunting Season

Distribution of Hunter Days- 2020



Amend: Turkey 19.31.16 NMAC

Proposed Changes

- **Increase Spring Season and Draw Entry hunts to close on May 15**
- **Adjust hunts based on calendar dates**
- **Evaluate Closed GMU list based on turkey population status**
- **Change Washington Ranch Hunt TBD (dates and tags) to precise hunt periods and permit numbers**



Amend: Turkey 19.31.16 NMAC

Proposed Changes

- **Include Black River Management Area (BLM) in Washington Ranch Youth Hunt Area**
- **Remove W.S. Huey Youth from Entry Permit Hunt**
- **Add GMU 26 and 27 to the Entry Permit hunt**



Questions?

