

Deer

19.31.13 NMAC

August 19, 2022

New Mexico State Game Commission Meeting



Deer Biology

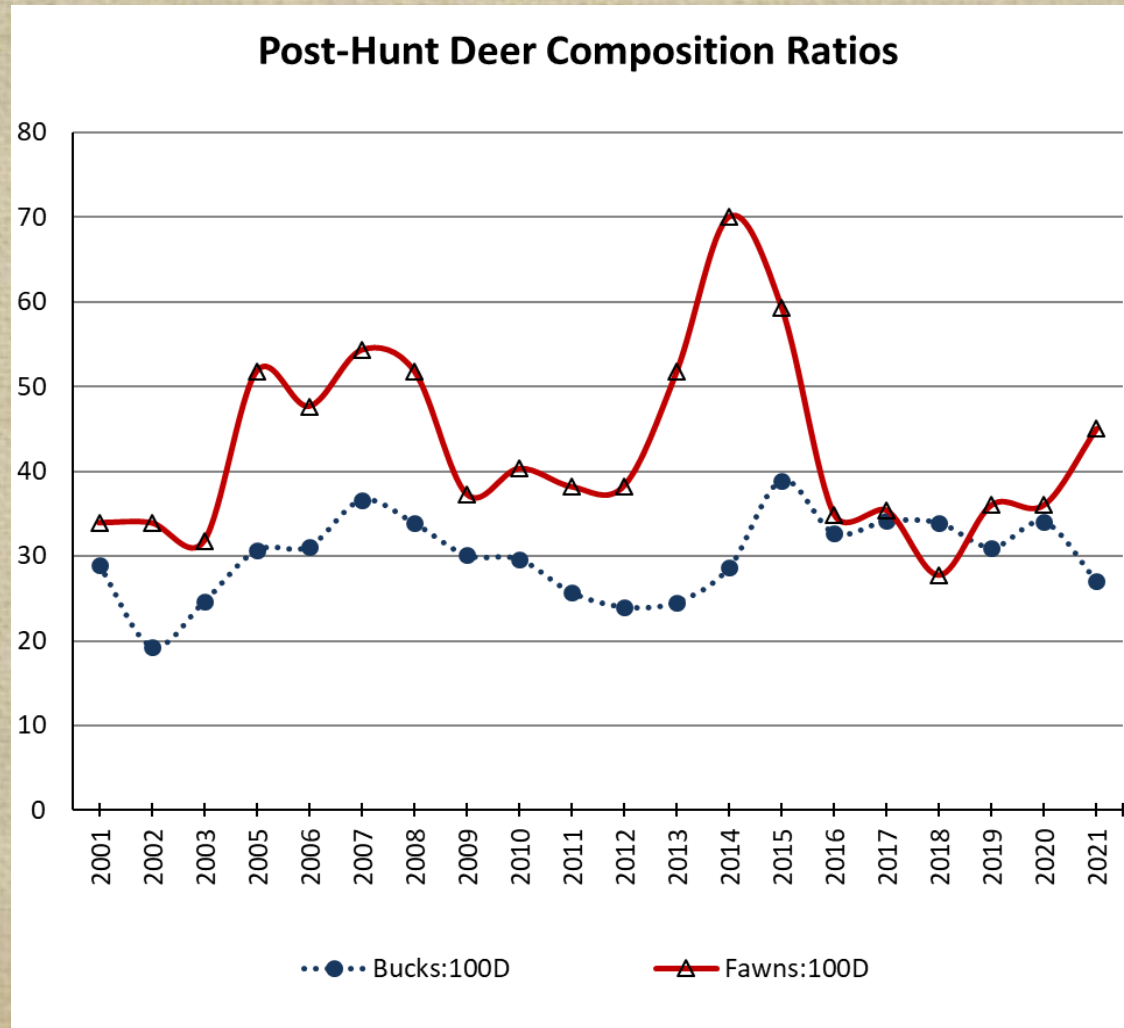
- Statewide population estimate: ~80,000-100,000
- Population growth driven by female and fawn survival
- Buck harvest not limiting to population growth
- >35 fawns:100 does over the long-term required for stable populations
- 5-Year Statewide Average: 32 bucks:100 does:36 fawns (2017-2021 survey data)



S.Liley Aug. 19, 2022



Statewide Composition Ratios



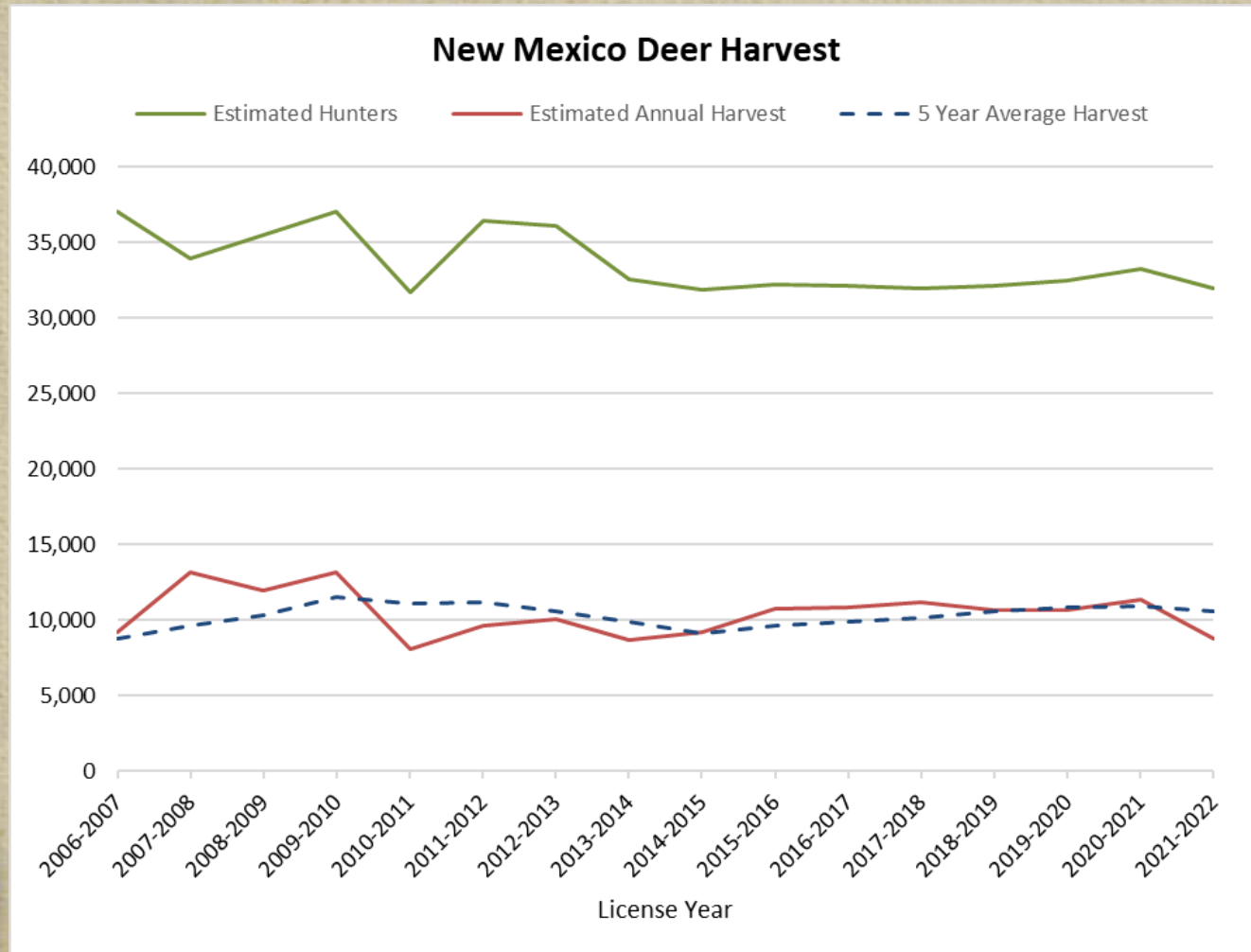
2021-2022 Deer License and Harvest



- 37,182 licenses sold
 - 99% are for bucks
- 85% of hunters reported
- 28% successful in harvesting
- Estimated statewide harvest
 - Bucks = 8,689; Does = 138
- Satisfaction rating = 3.2



Statewide Deer License and Harvest



Public Feedback

Hosted 4 hybrid in-person/virtual public meetings (78 attended in person, 74 tuned in virtually)

The Department received 102 official public comments through 8/17/22

| Subject | For | Against | Modify | Indifferent |
|-------------------------------------|-----|---------|--------|-------------|
| Remove scopes from muzzleloaders* | 18 | 34 | 11 | 1 |
| Adjust NW Youth Hunt as proposed | 7 | 3 | | |
| Decrease licenses in NW units | 9 | | | |
| Add FAWTD in 16/21/22/26 | 4 | 3 | | |
| Create GMU 7 & 9 January bow hunt** | 3 | 1 | | |
| Support all recommendations | 3 | | | |
| Reduce GMU 34 and other SE licenses | 2 | 1 | | |
| Create GMU 27 Sept archery hunt | | 1 | | |
| Licenses increase in 56 and 58 | | 1 | | |
| Remove "Excluding Fort Stanton" | 1 | | | |
| Designate GMU 8 as quality | 1 | | | |
| Other*** | 25 | | | |



Management Strategies

- Standard Hunts (also defined as Opportunity Hunts)



Management Strategies

- Quality Hunts (defined in rule)



Proposed Adjustments: Statewide

- Remove scopes from Muzzleloader.
- Adjust season dates to account for calendar shift.
- Adjust some hunts to minimize overlap of weapons used or species hunted.



S.Liley Aug. 19, 2022



9/19

Proposed Adjustments: NW Area

- Bring back October YO hunt in 2A & 2B.
 - GMU 2A: move 25 tags from November into October, keep 15 tags in November
 - GMU 2B: move 125 tags from November into October, keep 25 tags in November
- Create November rifle hunt on L Bar/Marquez WMA (10 tags)
- Create GMUs 7 & 9 – January archery hunt
 - 15 tags each
- Designate GMU 8 as a Quality Unit



Proposed License Adjustments: NW Area

| GMU | Total Change | % Change |
|-----------------|--------------|----------|
| 2B | -125 | -6% |
| 5B | 5 | 9% |
| 6A/6C | 10 | 3% |
| 7 | 25 | 45% |
| 8 | 15 | 13% |
| 9 | 30 | 75% |
| 12 | -5 | -3% |
| 14 | 15 | 10% |
| NW Region Total | -30 | -1% |



Proposed Adjustments: SW Area

- Add second hunt code for WSMR
 - Rhodes Canyon and Stallion Range hunts (5 tags each)
- Create December FAWTD rifle hunts for GMUs 21 and 26
- Create September FAMD and FAWTD archery hunts for GMU 27
- Open River Ranch and Double E WMAs to deer hunting



Proposed License Adjustments: SW Area

| GMU | Total Change | % Change |
|-----------------|--------------|----------|
| 19 (WSMR) | 5 | 20% |
| 20 | 5 | 2% |
| 21 | 25 | 1% |
| 23 | 35 | 10% |
| 24 | 55 | 3% |
| 26 | 25 | 8% |
| 27 | 35 | 10% |
| SW Region Total | 185 | 2% |



Proposed Adjustments: SE Area

- Reduce Huey youth antlerless licenses to 2 hunts of 5 licenses each
- Move hunts in 34 to minimize overlap of weapons used or species hunted
- Remove language “Excluding Fort Stanton”
- Open Pipkin Ranch to deer hunting



S.Liley Aug. 19, 2022



Proposed License Adjustments: SE Area

| GMU | Total Change | % Change |
|-----------------|--------------|----------|
| 29 | -40 | -7% |
| 30 | -160 | -6% |
| 31 | -50 | -4% |
| 32 | -125 | -7% |
| 33 | -10 | -2% |
| 34 | -170 | -6% |
| 37 | -25 | -2% |
| 38 | -35 | -6% |
| 39 | -10 | -6% |
| 40 | 15 | 10% |
| SE Region Total | -610 | -5% |



Proposed Adjustments: NE Area

- Add ESWTD hunt in 55A (private land units)



Proposed License Adjustments: NE Area

| GMU | Total Change | % Change |
|-----------------|--------------|----------|
| 42 | 15 | 14% |
| 43 | 5 | 9% |
| 45 | 15 | 2% |
| 47 | 5 | 7% |
| 48 | 15 | 9% |
| 49 | 25 | 9% |
| 53 | 10 | 4% |
| 54/55 | -20 | -25% |
| 56 | 5 | 7% |
| 58 | 5 | 3% |
| 59 | 5 | 3% |
| NE Region Total | 85 | 3% |



Total Draw Deer Licenses

| STATEWIDE TOTAL | Current | Proposed | Total Change | % Change |
|-----------------|---------|----------|--------------|----------|
| | 31,362 | 30,992 | -370 | -1% |



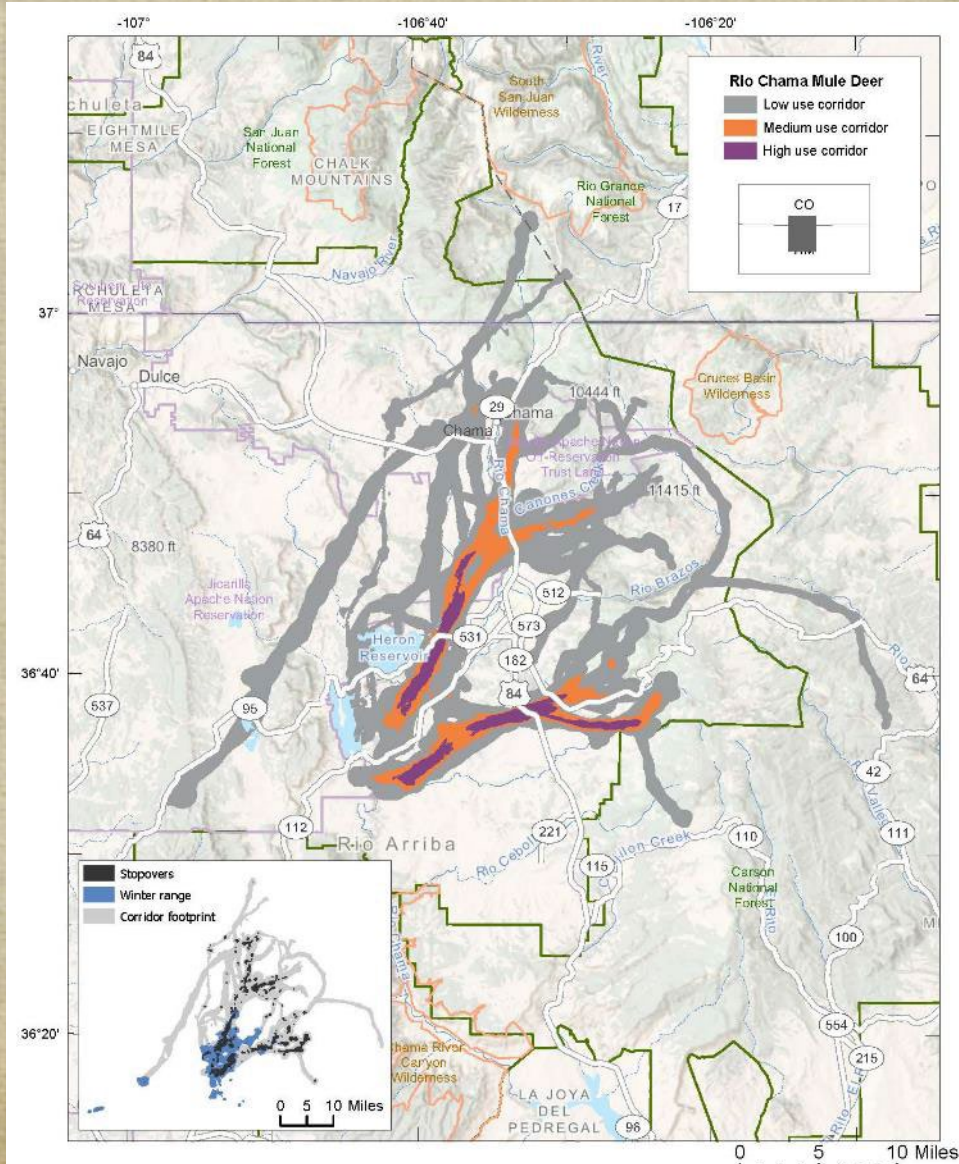
Questions



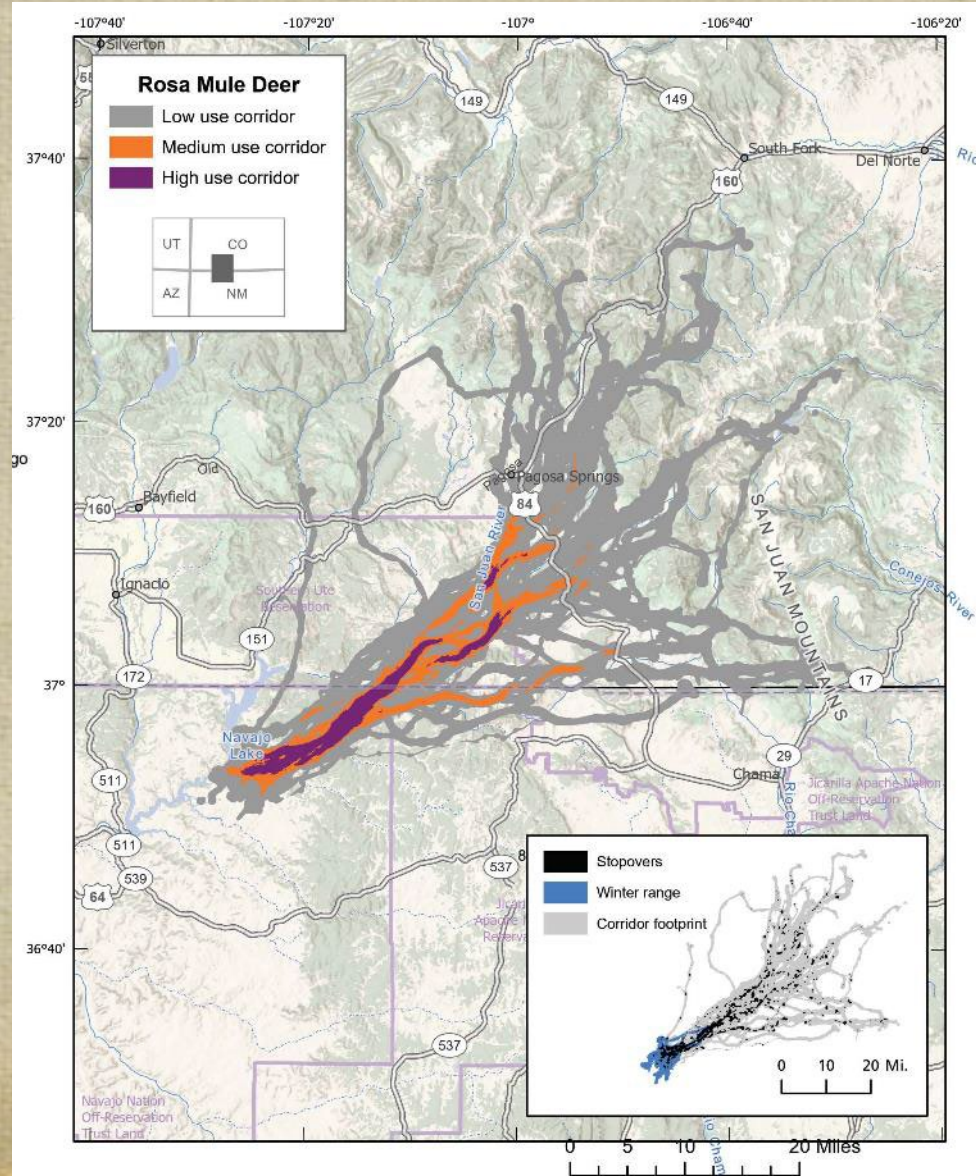
Comment on Proposals:
DGF-Deer-Rule@state.nm.us



Deer Migration Mapping



Deer Migration Mapping



Summary of previous rule changes

- Adjusted seasons for calendar dates
- Adjusted draw license numbers based on biological data & management goals
 - Increased total draw licenses by ~300 statewide
- Created some new hunting opportunities
- Separated archery season into September & January (2 different seasons)
- Standardized most youth hunts to a 9 day hunt surrounding Thanksgiving week



| | Parameter | Decrease | Maintain | Increase |
|-------------|--|------------|-----------|------------|
| Opportunity | Fawn:Doe ^a | <35 | 35 - 45 | - |
| | Buck:Doe ^a | <15 | 15 - 25 | >25 |
| | Rifle and Muzzleloader Success ^b | <20% | 20% - 35% | >35% |
| | Archery Success ^b | <10% | 10 - 25% | >25% |
| | Hunter Density (mi ²) ^c | >1 | 0.5 - 1 | <0.5 |
| Quality | Fawn:Doe ^a | <35 | 35 - 45 | - |
| | Buck:Doe ^a | <30 | 30 - 40 | >40 |
| | Rifle and Muzzleloader Success ^b | <40% | 40 - 55% | >55% |
| | Archery Success ^b | <20% | 20 - 35% | >35% |
| | Hunter Density (mi ²) ^c | >0.3 | 0.1 - 0.3 | <0.1 |
| | Population Trend ^d | Decreasing | Stable | Increasing |
| | Hunter Satisfaction | <3.0 | 3.0 – 3.5 | >3.5 |
| | Hunter Satisfaction Trend | Decreasing | Constant | Increasing |



General Proposed Changes

- Adjust seasons for calendar shift
- Adjust draw license numbers based on biological data, management goals, & public comment

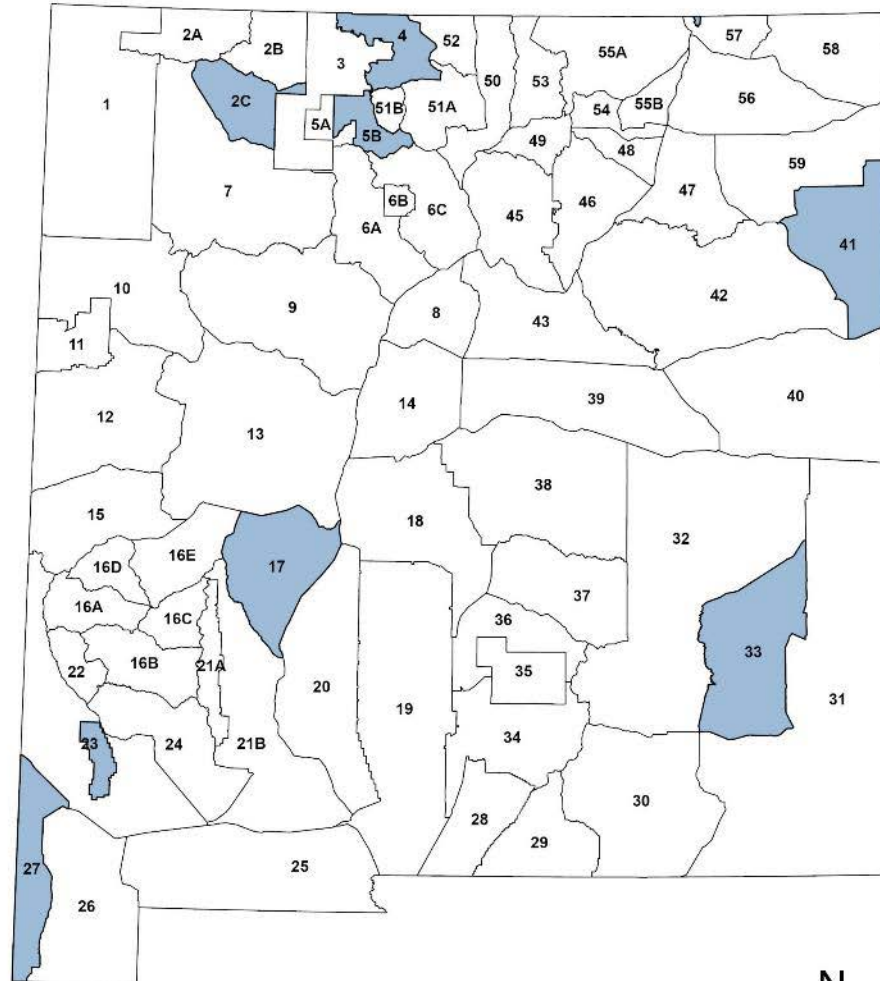


Data Collection/license determination

- Post hunt surveys
- Trends in harvest success and hunter satisfaction
- Try to maintain consistency in license allocations



Quality Deer Hunt Areas



0 20 40 80 Miles

Created 6 April 2022



S.Liley Aug. 19, 2022

9/21