

Bear and Cougar

19.31.11 NMAC



October 27, 2023
State Game Commission Meeting

Stewart Liley, October 27, 2023

Rule Development Timeline

- **April, August, & October** – present at SGC meetings
- **April** – Rule opens, initial NMDGF ideas posted on the website
- **July** – Public meetings throughout the state
- **September** – Final NMDGF proposed rule posted on the website
- **October 27th** – Act on rule



Public Comment Summary

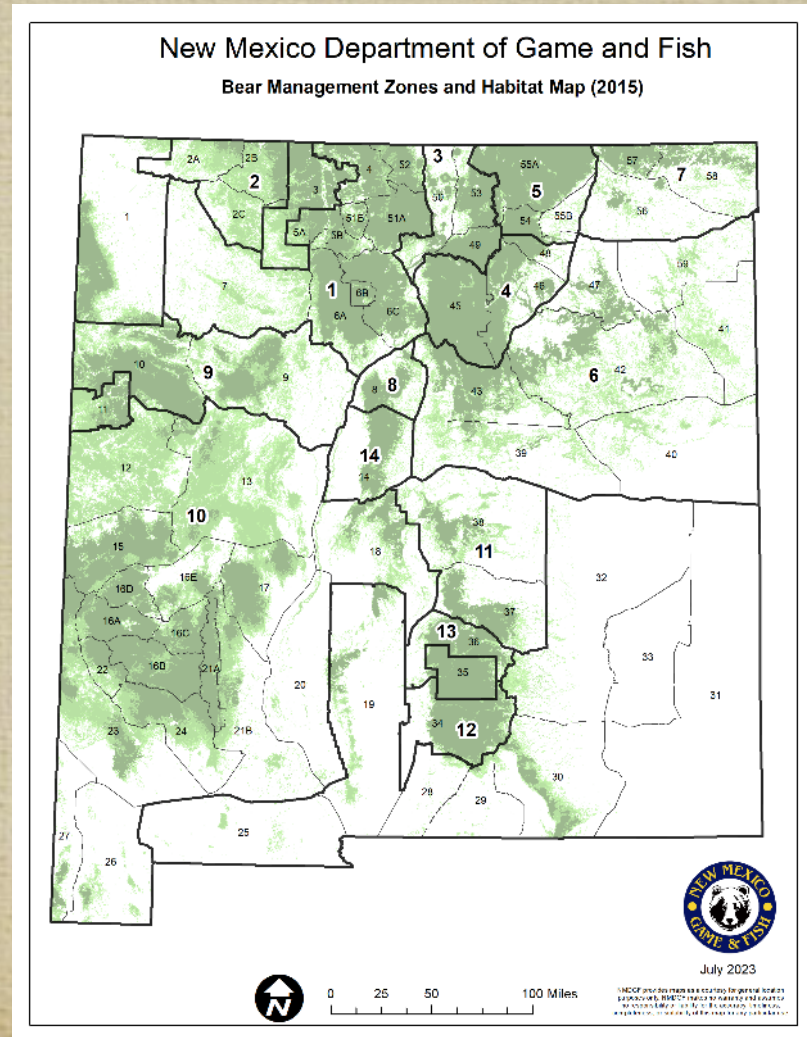
- Hosted 4 public meetings
 - Raton (11 attendees), Albuquerque (15), Las Cruces (12), Roswell (4)
- Received 2,813 emails, 10 written comments

TOPIC	
Support	1,702
Oppose	988
Alternate Proposals or Ambiguous	133



Black Bear Management Structure, Monitoring and Research

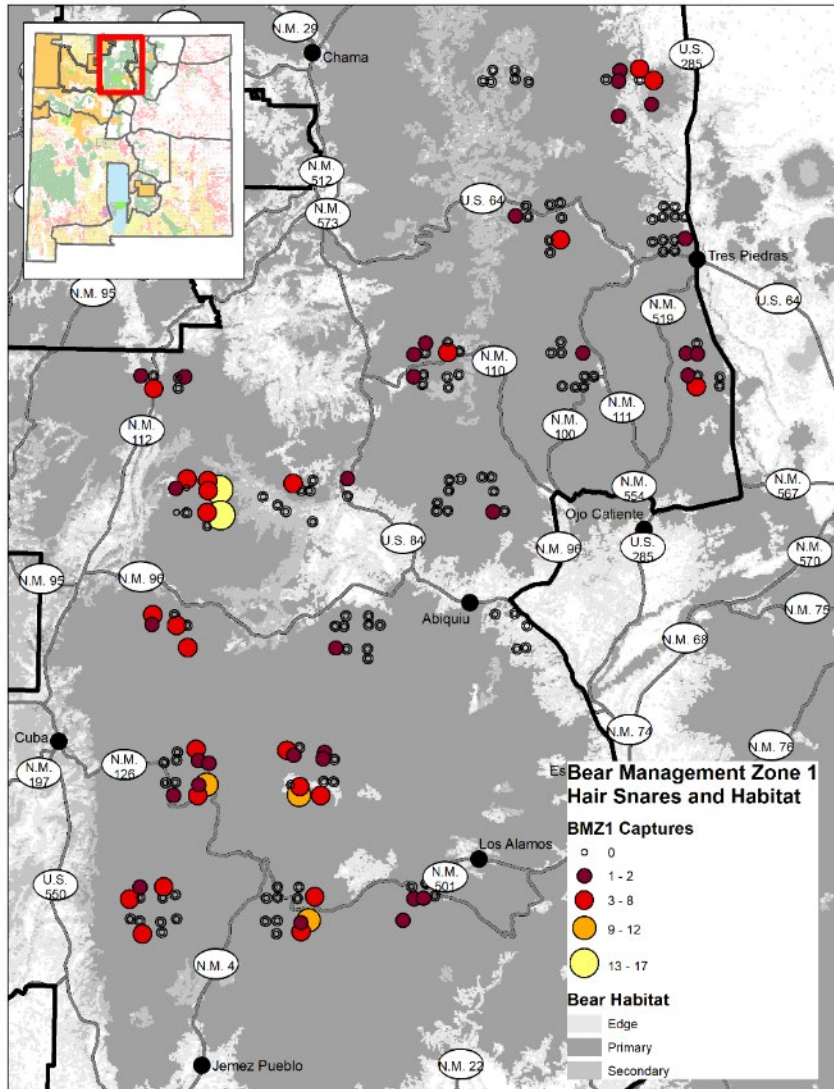
- Manage by zones
- Population estimate
- Conservative harvest limits



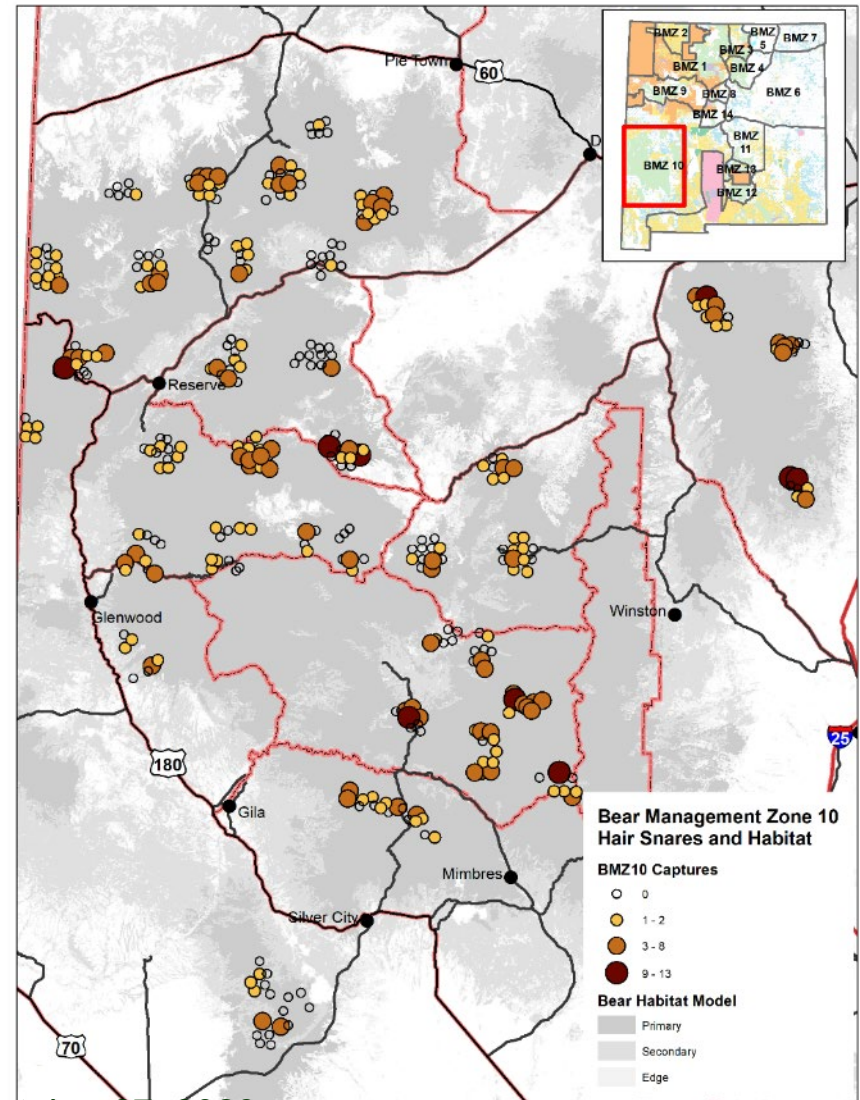
Stewart Liley, October 27, 2023

Map of Study Areas

BMZ 1 - 2019



BMZ 10 – 2020 & 2021



Bear Harvest

Year	Sport Harvest (females)	Max Allowable Harvest	Depredation	Other	Total	# of Zones Closed
2019	473 (172)	804	40	22	535	3
2020	603 (240)	804	100	41	745	6
2021	502 (192)	804	60	18	580	3
2022	523 (194)	804	83	31	637	4
AVG	525 (201)	804	71	28	624	4



Bear Proposals



- Increase harvest limits in BMZ 1 & 10
- Move GMU 57 to BMZ 5, and move GMUs 56 & 58 to BMZ 6
- Increase permit numbers for Marquez/Lbar and GMUs 54/55A draw hunts
- Move start date in BMZ 12 & 13 to August 16th



Bear Harvest Limits

BMZ	Current Total Limit (Female Sub-limit)	Proposed Total Limit (Female Sub-limit)
1	158 (63)	168 (67)*
2	15 (6)	15 (6)
3	65 (26)	65 (26)
4	109 (43)	109 (43)
5	92 (37)	108 (43)+
6	33 (13)	51 (20)+
7	35 (14)	---+
8	11 (4)	11 (4)
9	36 (14)	36 (14)
10	146 (58)	197 (79)*
11	36 (14)	36 (14)
12	33 (13)	33 (13)
13	16 (6)	16 (6)
14	19 (7)	19 (7)
STATEWIDE	804 (318)	864 (342)

*Change reflects the change in harvest limit as a result of added/subtracted GMU

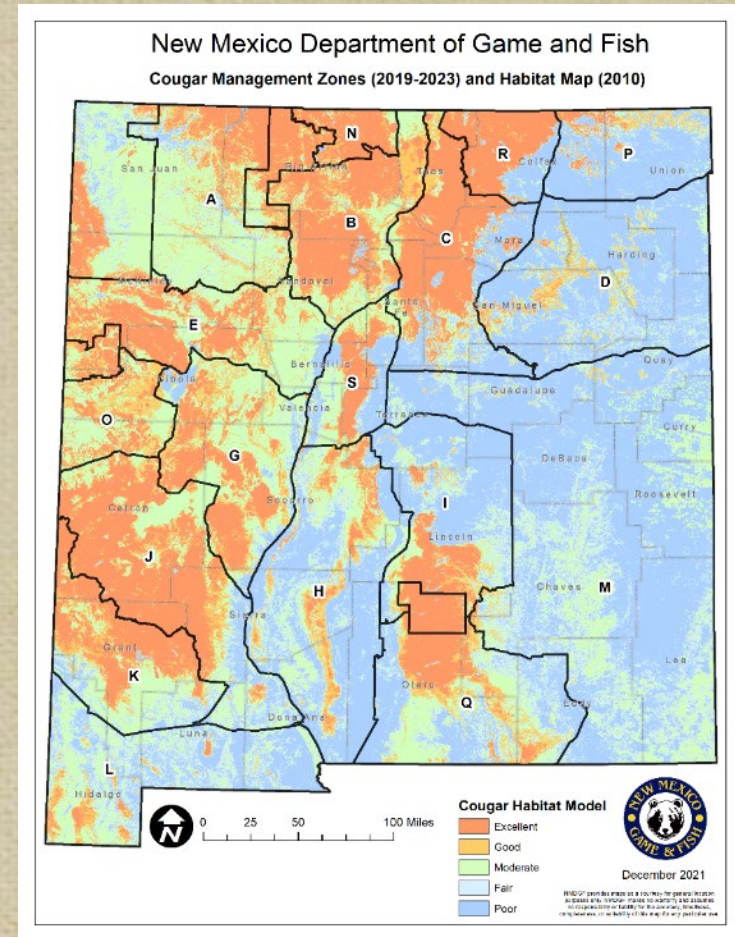
+Change reflects the change in harvest limit due to GMUs being added or removed from zone

Stewart Liley, October 27, 2023



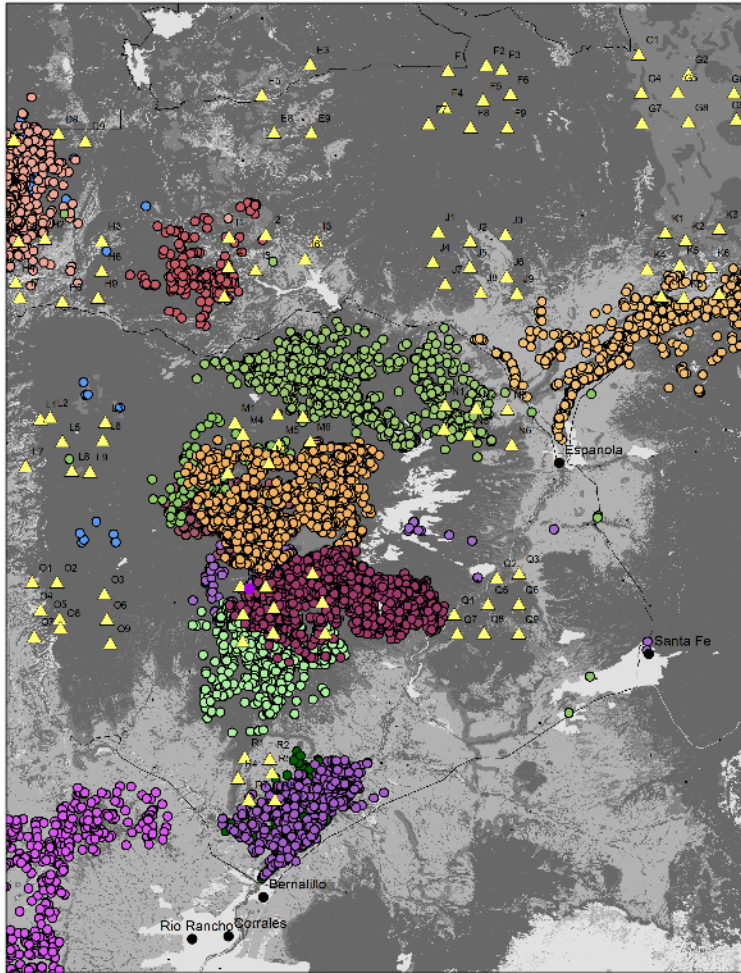
Cougar Management Structure, Monitoring and Research

- Cougar population size = density estimates applied to habitat map (different densities for different habitats)

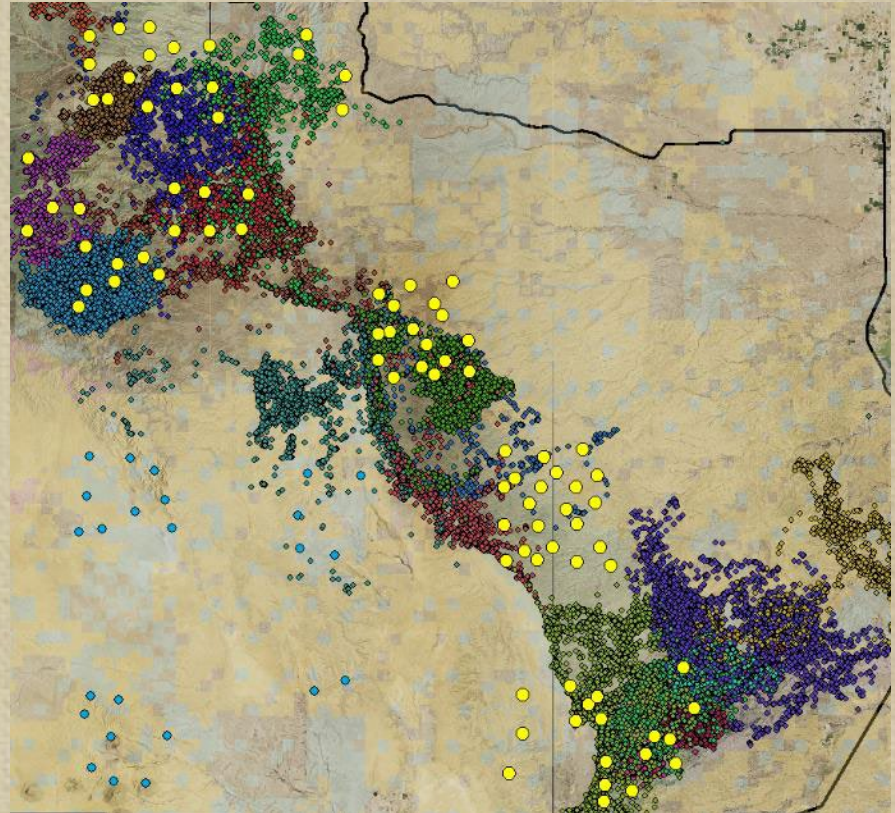


Map of Study Areas

CMZ BF – 2017-18



CMZ Q – 2019-21



Cougar Collar and Cameras

- **CMZs B & F, 2018:** 128 camera sites, 14 lions collared
 - Population estimate of 149 (~ 1 cougar/100km²)
- **CMZ Q, 2019-21:** 157 camera sites, 25 lions collared
 - Population estimate of 100 (~ 0.55 cougar/100km²)



Cougar Harvest

Year	Sport Harvest (females)	Max Allowable Harvest	Depredation	Other	Total	# of Zones Closed
2019	282 (112)	740	8	33	323	3
2020	272 (122)	580	17	42	331	9
2021	262 (91)	580	24	35	321	7
2022	304 (105)	580	21	48	373	6
AVG	280 (108)	---	18	40	337	8



Cougar Proposals

- Lower cougar harvest limit in CMZ Q



CMZ	2020-24 Total Limit (Female Sub-limit)	2024-28 Proposed Total Limit (Female Sub-limit)
A	42 (13)	42 (13)
B	25 (8)	25 (8)
C	57 (17)	57 (17)
D	15 (5)	15 (5)
E	42 (13)	42 (13)
G	50 (15)	50 (15)
H	29 (9)	29 (9)
I	24 (7)	24 (7)
J	84 (25)	84 (25)
K	45 (14)	45 (14)
L	19 (6)	19 (6)
M	25 (7)	25 (7)
N	15 (5)	15 (5)
O	17 (5)	17 (5)
P	14 (7)	14 (7)
Q	34 (11)	17 (6)
R	26 (8)	26 (8)
S	17 (5)	17 (5)

QUESTIONS



Stewart Liley, October 27, 2023