

# Macho Fence Modification Project

2024





# Macho Fence Modification Project



Bushnell

08-21-2014 16:54:27



**George Farmer**  
NMDGF  
[george.farmer@dgf.nm.gov](mailto:george.farmer@dgf.nm.gov)



**Danica Cooke**  
Bureau of Land Management  
Roswell Field Office  
[dcooke@blm.gov](mailto:dcooke@blm.gov)



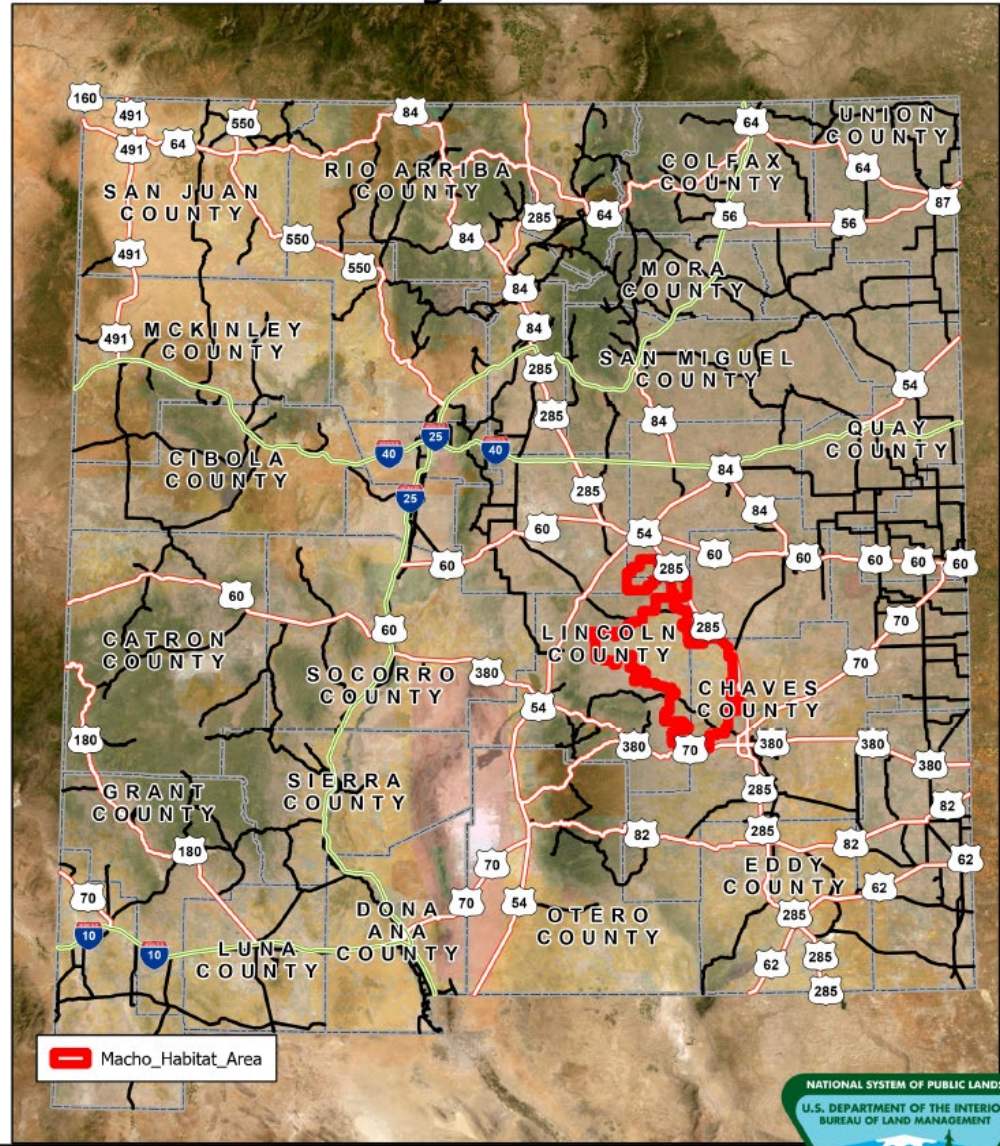
## Macho Big Game Passes

Restoration efforts over the past 17 years have been focused on removing barriers that limit the movement and distribution of pronghorn and young mule deer on the Macho landscape.

This effort provides an immediate benefit to pronghorn and young mule deer by allowing them to travel across the landscape to find food, shelter, and water.

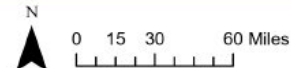


## 2024 Macho Big Game Pass Allotments



**Bureau of Land Management  
Roswell Field Office**

No warranty is made by the BLM as to the accuracy, reliability, or completeness of these data for individual use or aggregate use with other data, or for purposes not intended by BLM. Spatial information may not meet National Map Accuracy Standards.



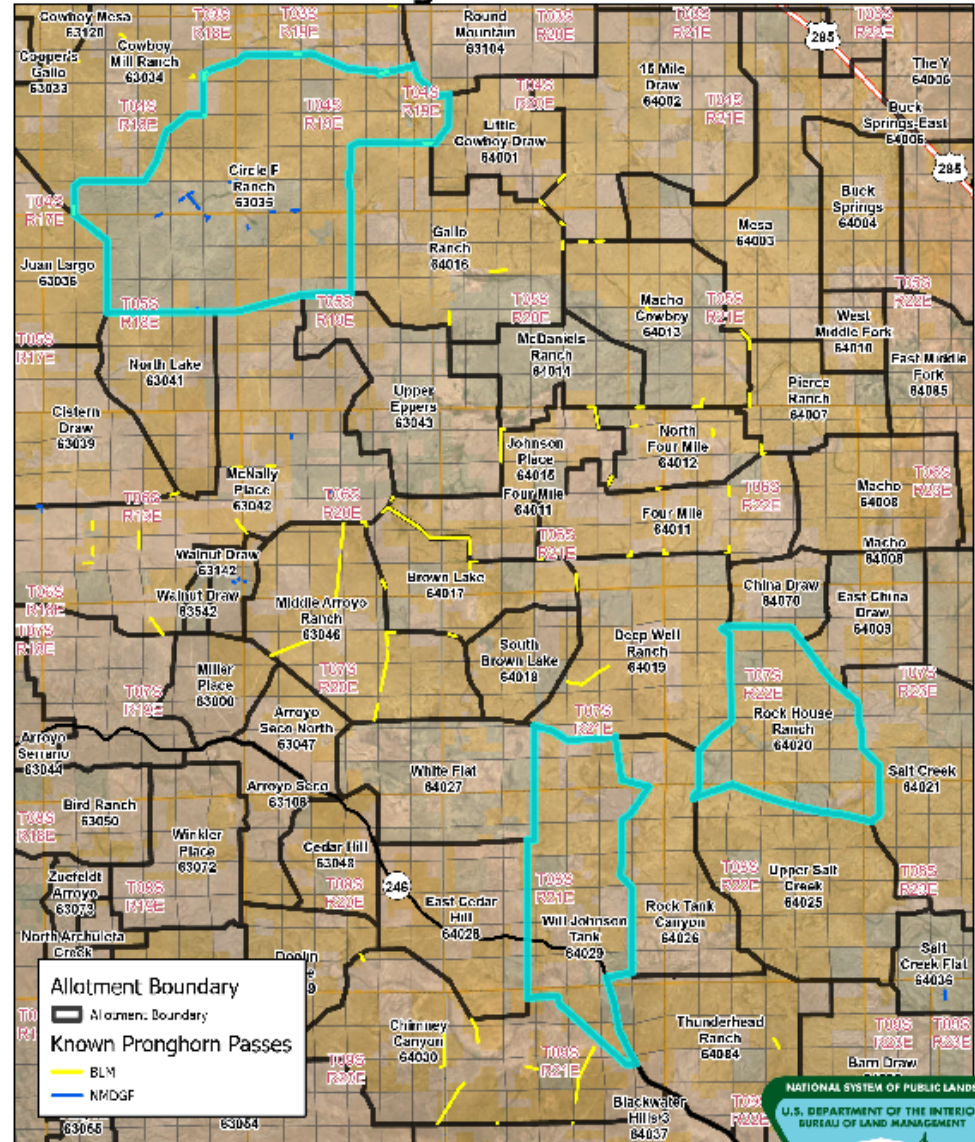


- The combined efforts of BLM, NMDGF, NFWF, and other partners have connected hundreds of thousands of acres of pronghorn habitat through the removal of sheep wire fence.
- Currently, the BLM has 44 signed cooperative agreements on ranches in the Macho, meaning that there is potential to connect over 900,000 acres of habitat between all 44 ranches. New agreements are signed every year, increasing this total acreage.
- Ranchers that are reluctant to sign cooperative agreements for fence work have shown increased interest if we can replace longer stretches of fence.



for fence work have shown increased interest if we can replace longer stretches of fence.

## 2024 Macho Big Game Pass Allotments





# Summary of Project

14 miles of fence removal  
and replacement  
\$35,000-per mile  
\$490,000 funding needed





# Macho Landscape Wildlife Habitat Connectivity 2024



- For the past 17 plus years the Roswell BLM office and NMDGF, and other partners have connected hundreds of thousands of acres of habitat for pronghorn and mule deer through the modification of net wire fence.
- In the Macho Landscape, nearly every allotment was fenced by sheep wire. At the time there was prime pronghorn habitat without any pronghorn occupying it.
- Pronghorn and young mule deer cannot move through these net wire fences, which limited movement and distribution on the landscape. This barrier hinders their ability to find food, shelter and water.

**Roswell Field Office- BLM**  
Project Contacts:

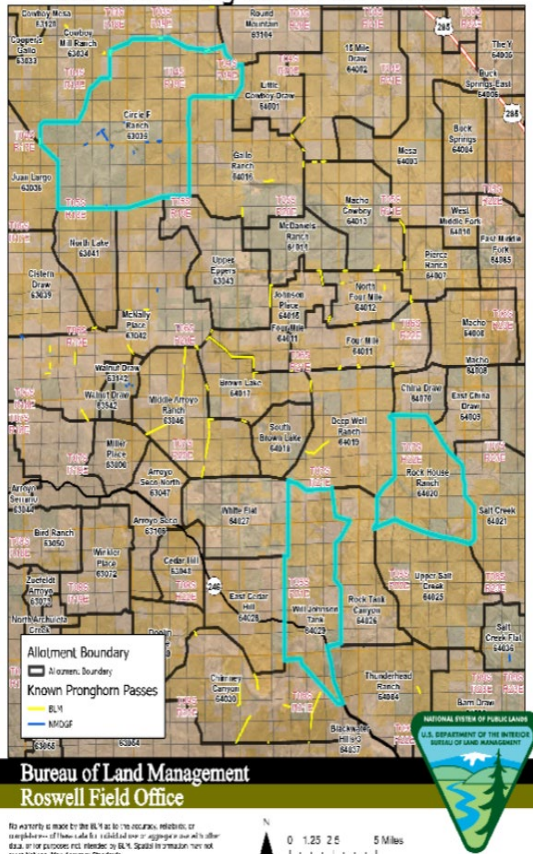
BLM- Danica Cooke [dcooke@blm.gov](mailto:dcooke@blm.gov)  
NMDGF-George Farmer [george.farmer@dgf.nm.gov](mailto:george.farmer@dgf.nm.gov)

## Proposed Management Actions

- The NMDGF with collaboration from the Roswell BLM, will contract the removal of ~14 miles of net wire fence, to be replaced with 14 miles of 4 strand wildlife friendly fence, built to BLM specifications.
- Implementation of this entire restoration project will eventually cost \$1,000,000 or more.
- The fence will be replaced in 1/4 to multiple miles per sections, all on BLM managed public lands.
- Cost are projected to be \$35,000 per mile.
- The actual length of fence that is replaced may change depending on material prices and cost of labor at the time of construction.

Estimated Budget for HSP: \$490,000.00

2024 Macho Big Game Pass Allotments





Project relation to CAC advice or priorities:

This project represents one of the best examples of habitat connectivity for pronghorn and young mule deer, multi agency landscape scale management within New Mexico. CAC members have expressed an interest and emphasis on habitat connectivity at several CAC meetings.

Project Specific Details:

This project seeks funding for sheep wire fence removal and replacing it with BLM spec 4-strand wildlife friendly 4-strand friendly fence to allow for safe passage of big game animals. We are looking at the removal and replacement of approximately 14 miles of fence.

Historical Data:

Historically, sheep ranching was huge in the Roswell Field Office. This means that nearly all the ranches northwest of town are exclusively sheep wire fence, which pronghorn and young mule deer cannot pass through. Now, some ranches still run sheep and goats, but most have moved to cattle and no longer need sheep wire fences.

Itemized Use of Funds:

This project seeks \$490,000  
14 miles of fence removal and replacement  
at a cost of \$35,000-per mile.

Comprehensive Project Analysis:

A comprehensive analysis is provided on the summary slide and accompanying presentation, but this project is focused upon restoring landscape connectivity in this project area for pronghorn and mule deer.

Monitoring Plan/ Strategy:

Russell Fox, Operations Department Rangeland Management Specialist will check fences to make sure they meet the specs. Fences will continue to be checked in subsequent years by interns and allottees for repair needs. The allottee is responsible for repairs, as per the signed cooperative agreement.

Project Emphasis Species:

The primary game species that will benefit from this project include Pronghorn and Mule Deer.

