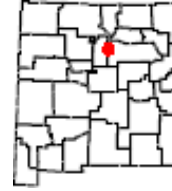




# Monastery Lake, Pecos, OG.127



**Access Type:** Fishing, Walk-in Only.

**Hours:** Access allowed from 30 minutes before sunrise to sunset. Closed when lake is frozen.

**Information:** Monastery Lake is a charming oval-shaped lake located in the Sangre de Cristo Mountains at an elevation of 7,000 ft. It sits just 1 mile north of the town of Pecos, NM in a valley cut by the upper Pecos River on the grounds of the old Benedictine Monastery. Monastery Lake covers 6 acres with a maximum depth of 20 feet. This is a regularly stocked, family favorite, trout pond with good handicapped access. The pond is owned by the Benedictine Monastery and public fishing access is leased from the Monastery by the New Mexico Department of Game and Fish through the Open Gate Program. Common species include: rainbow trout and brown trout. Restrooms and trash cans are available. *Please help keep the area clean!*

**Permitted Activities:** Fishing – Open Daylight Hours. Fishing is allowed only from the shore.

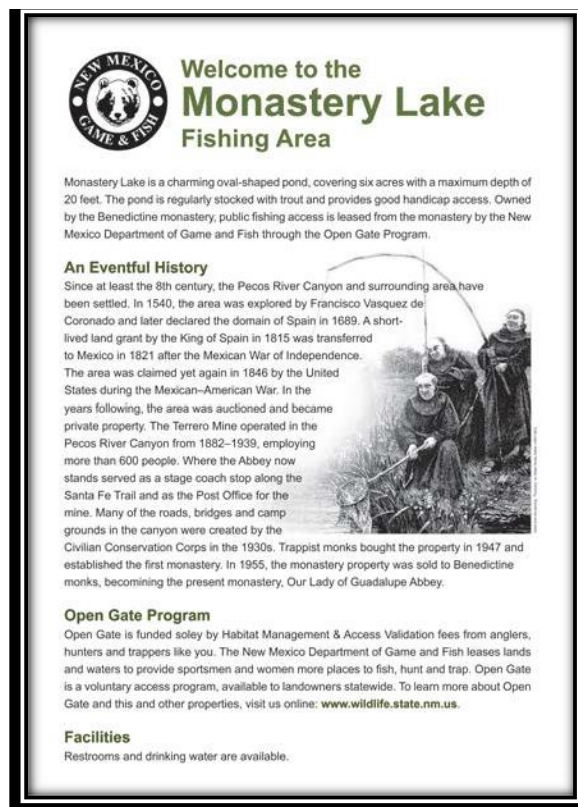
Permitted Activities	Available Dates	Remarks
Fishing	<p>Open year round.</p>  <p>Please see the 2024-2025 Fishing Rules and Information.</p>	<p>See property rules for special use restrictions.</p> <p><b>No ice fishing. Area closed when lake is frozen.</b></p> <p>Anglers 11 years of age and younger are not required to hold a fishing license. You may fish without a license on free fishing days.</p>


**Open Gate** is a program that leases private lands to improve public access for hunting, fishing, and trapping. Open Gate leases are funded exclusively by hunters, anglers, and trappers through the purchase of the Habitat Management and Access Validation (HMAV).

# Monastery Lake

**Property Rules:** The following rules will be posted on this property and enforced at the discretion of the Department of Game and Fish.

- Use of this Open Gate property is restricted to properly licensed sportspersons for the following activities: **Fishing**.
- No trespassing unless you are a properly licensed sportsperson, are accompanied by a properly licensed sportsperson or are license-exempt.
- No ice fishing. When the surface of the lake is frozen, all portions of the premises are closed.
- Bag limit of 5 rainbow trout of any length per day.
- Fishing from the shoreline only. No boats or floating devices allowed.
- No motor vehicle travel off designated roads or on closed roads.
- No destructive acts, including vandalism, graffiti, theft, removal or defacing natural features, resources or signs.
- No consumption of alcoholic beverages, picnicking, or swimming.
- No camping.
- No fires.
- No discharge of any type of weapon.
- **No littering. Pack out your trash or use provided trash bins. Depositing trash in toilets or elsewhere is prohibited.**
- No swimming or wading.
- Access allowed 30 minutes before sunrise to sunset.



 **Welcome to the Monastery Lake Fishing Area**

Monastery Lake is a charming oval-shaped pond, covering six acres with a maximum depth of 20 feet. The pond is regularly stocked with trout and provides good handicap access. Owned by the Benedictine monastery, public fishing access is leased from the monastery by the New Mexico Department of Game and Fish through the Open Gate Program.

**An Eventful History**

Since at least the 8th century, the Pecos River Canyon and surrounding area have been settled. In 1540, the area was explored by Francisco Vasquez del Coronado and later declared the domain of Spain in 1689. A short-lived land grant by the King of Spain in 1815 was transferred to Mexico in 1821 after the Mexican War of Independence. The area was claimed yet again in 1846 by the United States during the Mexican-American War. In the years following, the area was auctioned and became private property. The Terrero Mine operated in the Pecos River Canyon from 1882-1939, employing more than 600 people. Where the Abbey now stands served as a stage coach stop along the Santa Fe Trail and as the Post Office for the mine. Many of the roads, bridges and camp grounds in the canyon were created by the Civilian Conservation Corps in the 1930s. Trappist monks bought the property in 1947 and established the first monastery. In 1955, the monastery property was sold to Benedictine monks, becoming the present monastery, Our Lady of Guadalupe Abbey.

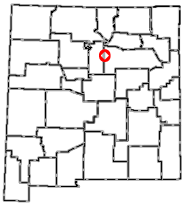
**Open Gate Program**

Open Gate is funded solely by Habitat Management & Access Validation fees from anglers, hunters and trappers like you. The New Mexico Department of Game and Fish leases lands and waters to provide sportsmen and women more places to fish, hunt and trap. Open Gate is a voluntary access program, available to landowners statewide. To learn more about Open Gate and this and other properties, visit us online: [www.wildlife.state.nm.us](http://www.wildlife.state.nm.us).

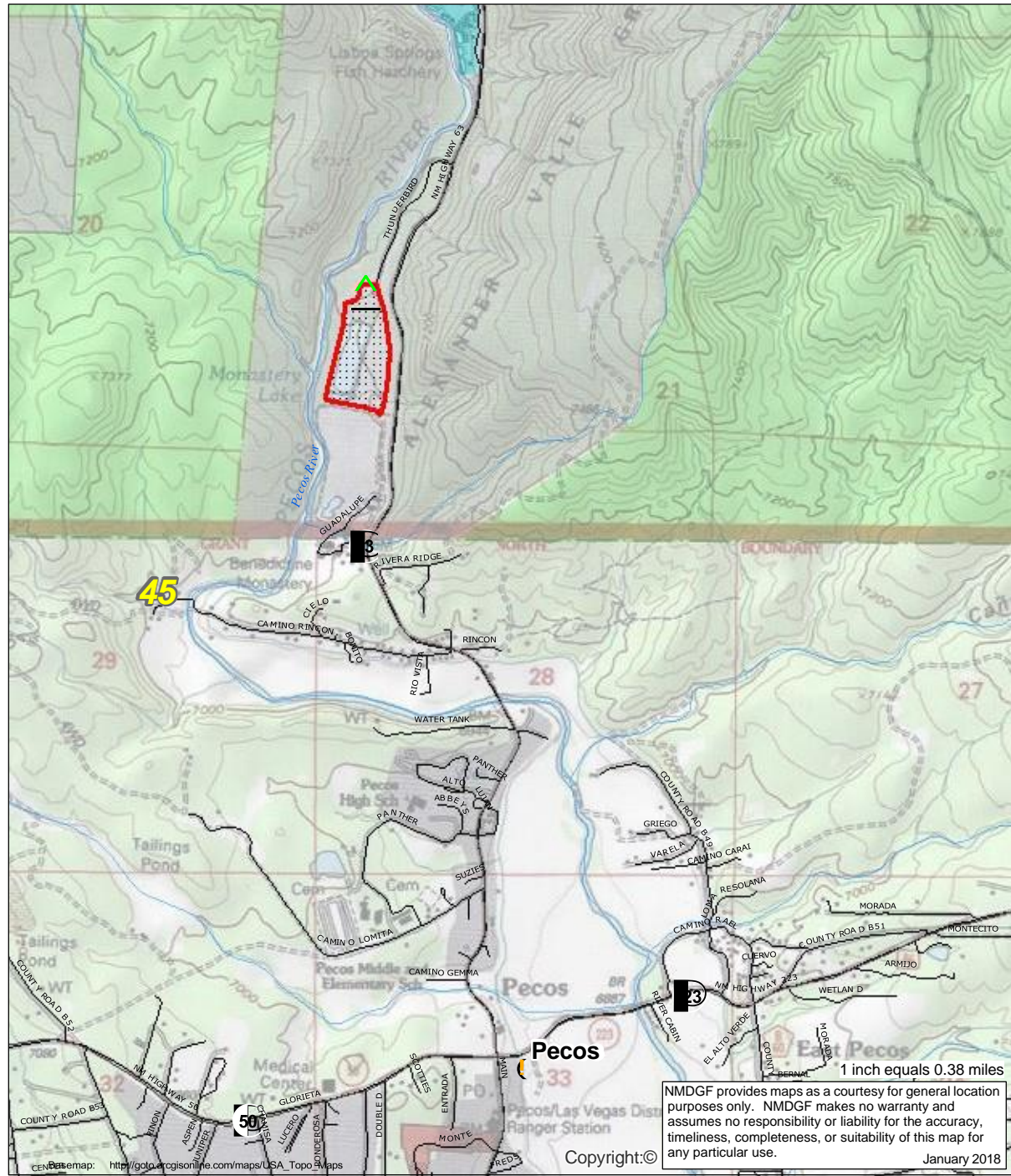
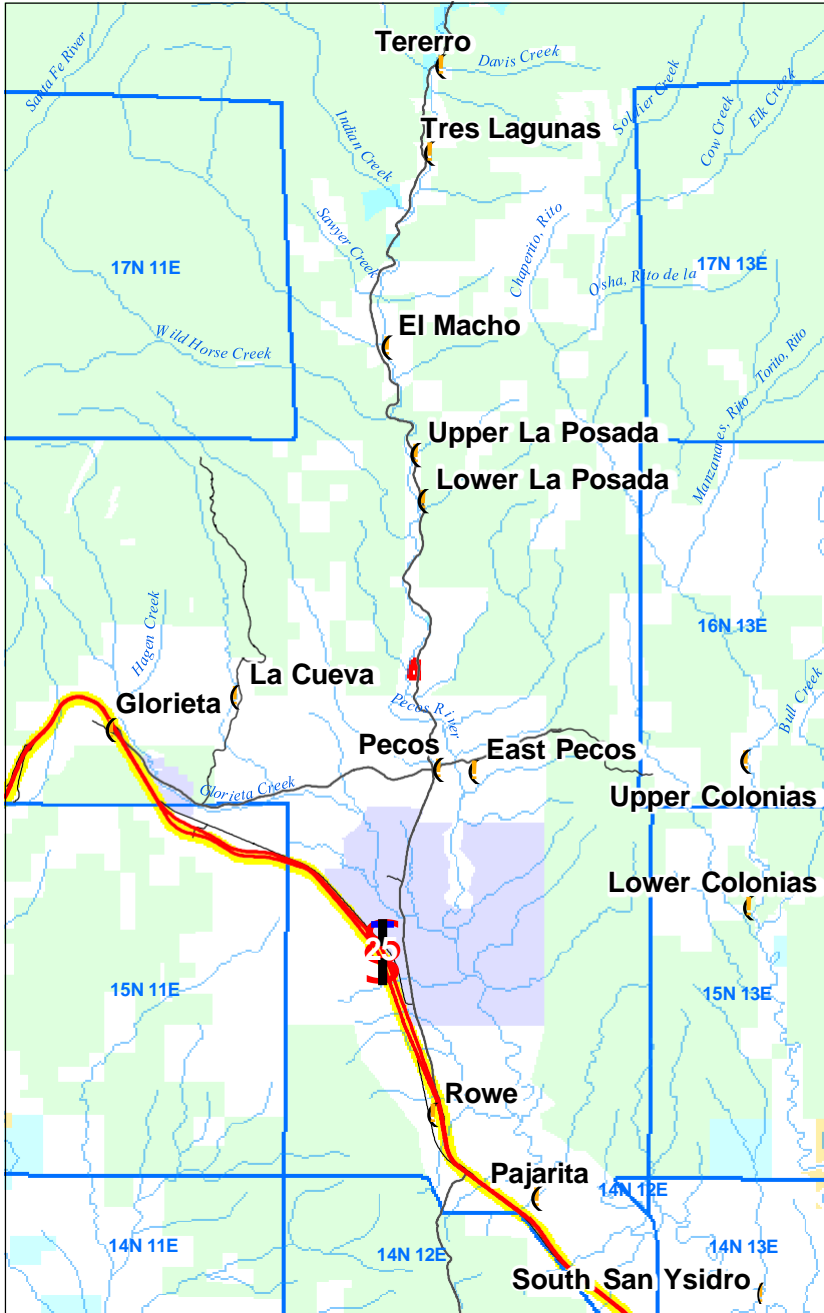
**Facilities**

Restrooms and drinking water are available.

**Rate this Property** - NMDGF wants your feedback to ensure that this property is providing an enjoyable outdoor experience. Please take a moment to anonymously rate this property. We know your experience can differ each time you go afield, so be sure to provide a separate review each time you visit this Open Gate property. *After each visit you can quickly provide a review by clicking the **Rate a Property** tab on the [Open Gate homepage](#).*



**OPEN GATE  
Hunting and Fishing  
Access Program  
Property OG.127**



>>> Be Ethical, Courteous, and Safe <<<  
All New Mexico Department of Game and Fish regulations and seasons apply.

- Property Rules Sign
- PLSSTownship
- Open Gate Property
- GMU Boundaries

- Roads**
- Secondary Road
- State Highway
- Interstate Highway
- US Highway

- Surface Ownership**
- BLM
- USFS
- Tribal
- Private
- State

1 inch equals 0.38 miles  
NMDGF provides maps as a courtesy for general location purposes only. NMDGF makes no warranty and assumes no responsibility or liability for the accuracy, timeliness, completeness, or suitability of this map for any particular use.  
January 2018

