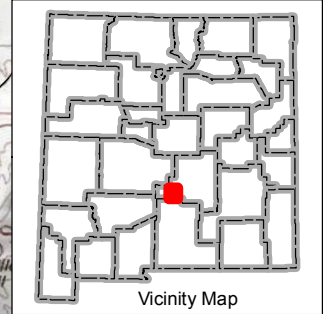


410000 000000

420000 000000

NMDGF provides maps as a courtesy for general location purposes only. NMDGF makes no warranty and assumes no responsibility or liability for the accuracy, timeliness, completeness, or suitability of this map for any particular use.

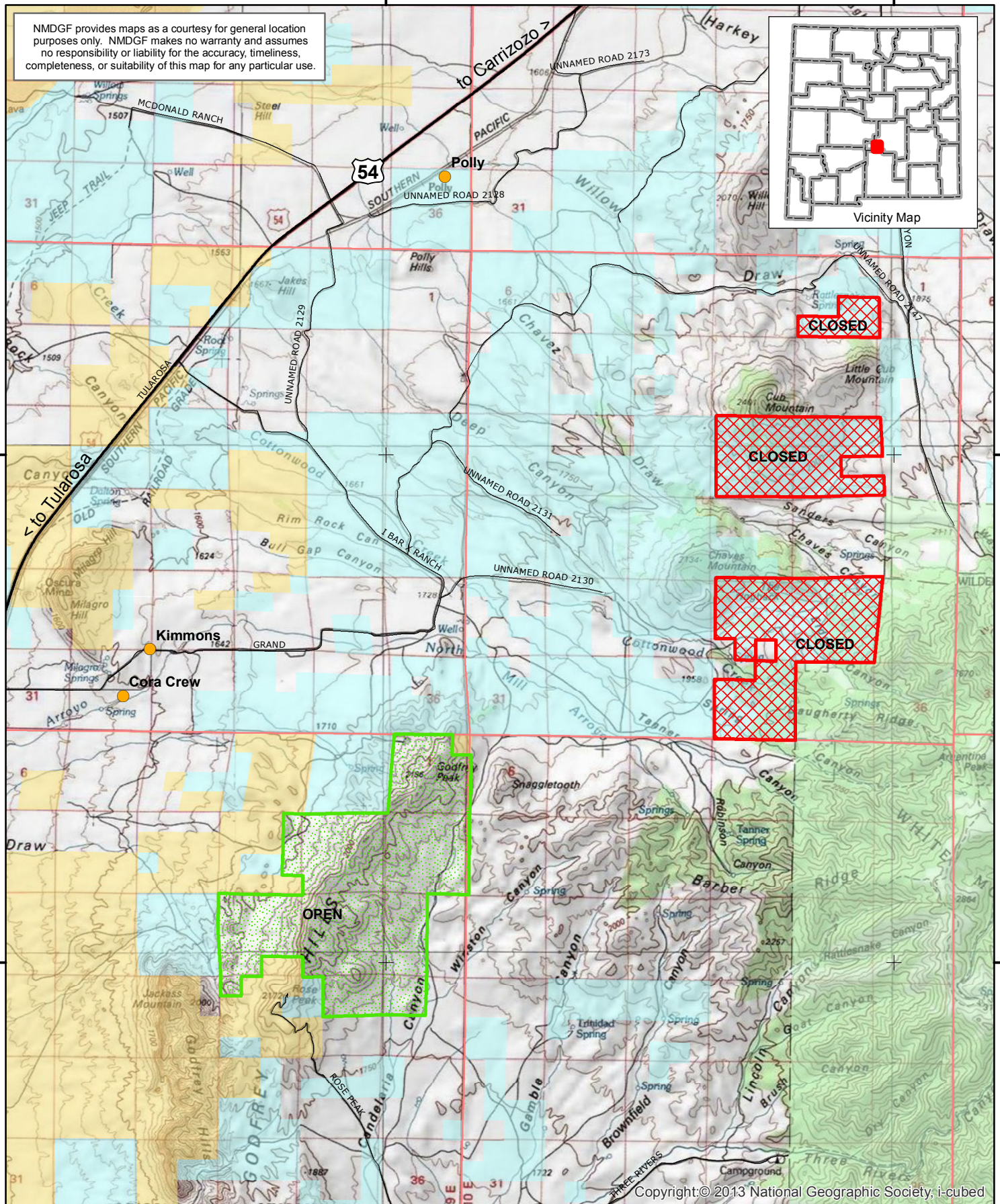


3710000 000000

3710000 000000

3700000 000000

3700000 000000



Copyright © 2013 National Geographic Society, i-cubed

410000 000000

420000 000000



March 2017

## I Bar X (Stephenson) Ranch - GMU 36 NM Game & Fish Unitizing Agreement Areas

- State Land - Closed to Public Hunting
- Private Land - Open to Public Hunting

For additional maps and information contact the  
New Mexico Public Lands Information Center.  
<http://www.publiclands.org/explore>

0 0.75 1.5 3 Miles

