



Habitat Stamp Program: Citizen Advisory Committees

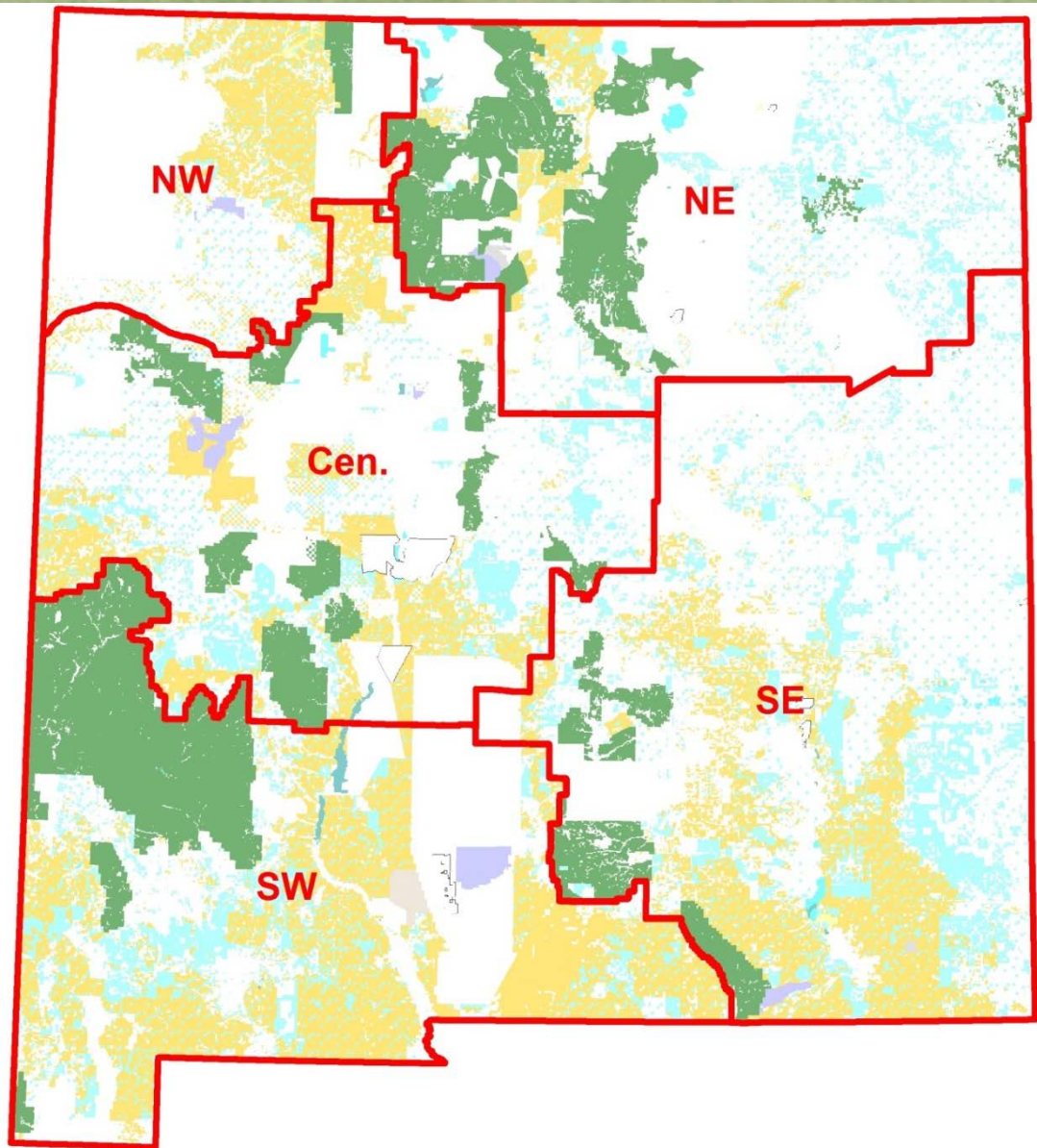
August 22, 2013

**New Mexico State Game Commission Meeting
Grants, NM**

Habitat Stamp Program (HSP) : History

- Began in 1986
- Hunters, anglers and trappers using USFS or BLM lands must purchase annual habitat stamp
- To date, \$40 million expended to improve habitat
 - 790,000 acres treated
 - 11,000 acres riparian protected or improved
 - 760 new wildlife waters built
 - 17 wildlife transplants
 - 86 fishing areas improved





Citizen Advisory Committees

- 5 committees
- 7 member committee
- 5 sportsmen/women
- 1 non-sportsmen wildlife
- 1 permittee (grazing, oil/gas)
- Appointed by the State Game Commission & serve three year terms
- 11 terms expired in 2011
- 24 terms expire in 2013

Role of the Citizen Advisory Committees

- Review and rank proposals
- Advise which proposals are to be funded
- Attend field tours
- Represent HSP back to peers





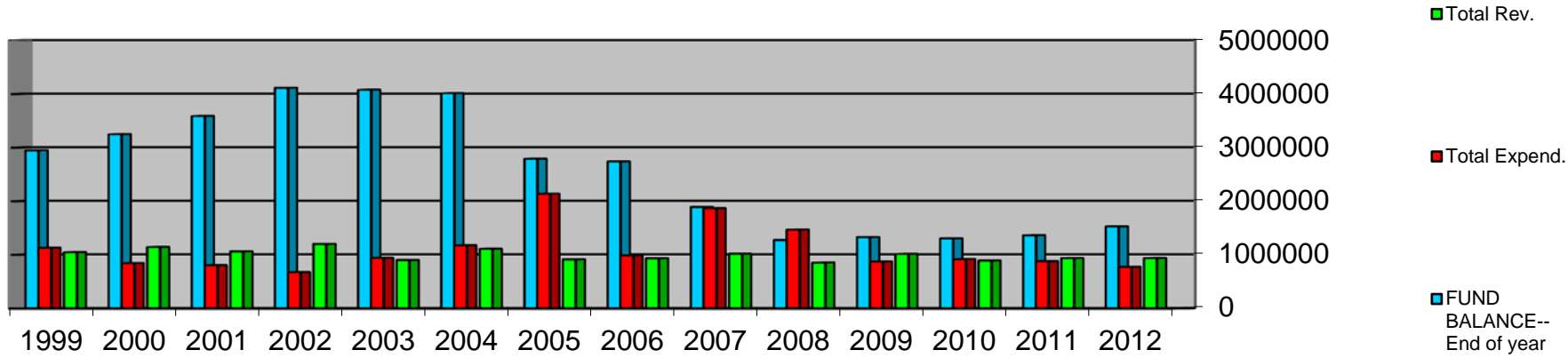
Appointments to Committees

- **Application to serve posted on website, emailed to interested parties, released to media, and by word-of-mouth**
- **Applications compiled by Department personnel and forwarded to SGC Chair for review**
- **SGC acts on appointments**
- **Appointments filed with Governor's office and DFA Secretary**



Questions?

Habitat Stamp Fund 1999-2012 Revenues, Expenditures, & Balance





Habitat Stamp Program Statutes and Rules

- **16USC670a Sikes Act**
- **NMSA 17-2-1 Commission powers**
- **19 NMAC 34.6 Public Land User Stamp**



Base Allocation

- 1/2 budget set aside as “base funds”
- Divides *base funds* equally to regions (10% to each region).
- Within region, then divides *base funds* to agencies by land mass.
- Agencies do not need to compete for base funding.
- Base allocation can be used to maintain existing HSP projects and to fund agency priority projects.



Land Mass Allocation

- 1/2 budget set aside as “land mass” funds.
- Distributes *land mass funds* to regions based upon their percent of land mass within the state.
- Within region, then *land mass funds* distributed on project by project basis through competition as ranked by citizens.

HSP funding formula adopted by SGC Feb. 2012

STATE ALLOCATION:

\$742,300

REG.	AGENCY	FS/BLM ACRES	% Acres of State	% Acres of Region	\$ Base Guarantee	\$ Allocated to Regions	Region Total \$
CEN	Rio Puerco	1,012,000	4.4%	24.4%	\$18,137		
	Socorro	1,504,070	6.6%	36.3%	\$26,956		
	Cibola	1,625,689	7.1%	39.3%	\$29,136		
	Region Total	4,141,759	18.1%	100.0%	\$74,230	\$67,155	\$141,385
NE	Taos	564,000	2.5%	15.6%	\$11,610		
	Carson	1,344,774	5.9%	37.3%	\$27,683		
	Kiowa NG	130,000	0.6%	3.6%	\$2,676		
	Santa Fe	1,567,181	6.8%	43.5%	\$32,261		
	Region Total	3,605,955	15.8%	100.0%	\$74,230	\$58,467	\$132,697
NW	Farmington	1,161,113	5.1%	88.3%	\$65,570		
	Jicarilla RD	153,355	0.7%	11.7%	\$8,660		
	Region Total	1,314,468	5.7%	100.0%	\$74,230	\$21,313	\$95,543
SE	Carlsbad	2,000,000	8.7%	40.9%	\$30,353		
	Roswell	1,620,077	7.1%	33.1%	\$24,587		
	Lincoln	1,271,068	5.6%	26.0%	\$19,290		
	Region Total	4,891,145	21.4%	100.0%	\$74,230	\$79,306	\$153,536
SW	Las Cruces	5,568,577	24.3%	62.3%	\$46,251		
	Coronado	68,617	0.3%	0.8%	\$570		
	Gila	3,300,000	14.4%	36.9%	\$27,409		
	Region Total	8,937,194	39.0%	100.0%	\$74,230	\$144,909	\$219,139
State Total		22,890,521	100.0%		\$371,150	\$371,150	\$742,300