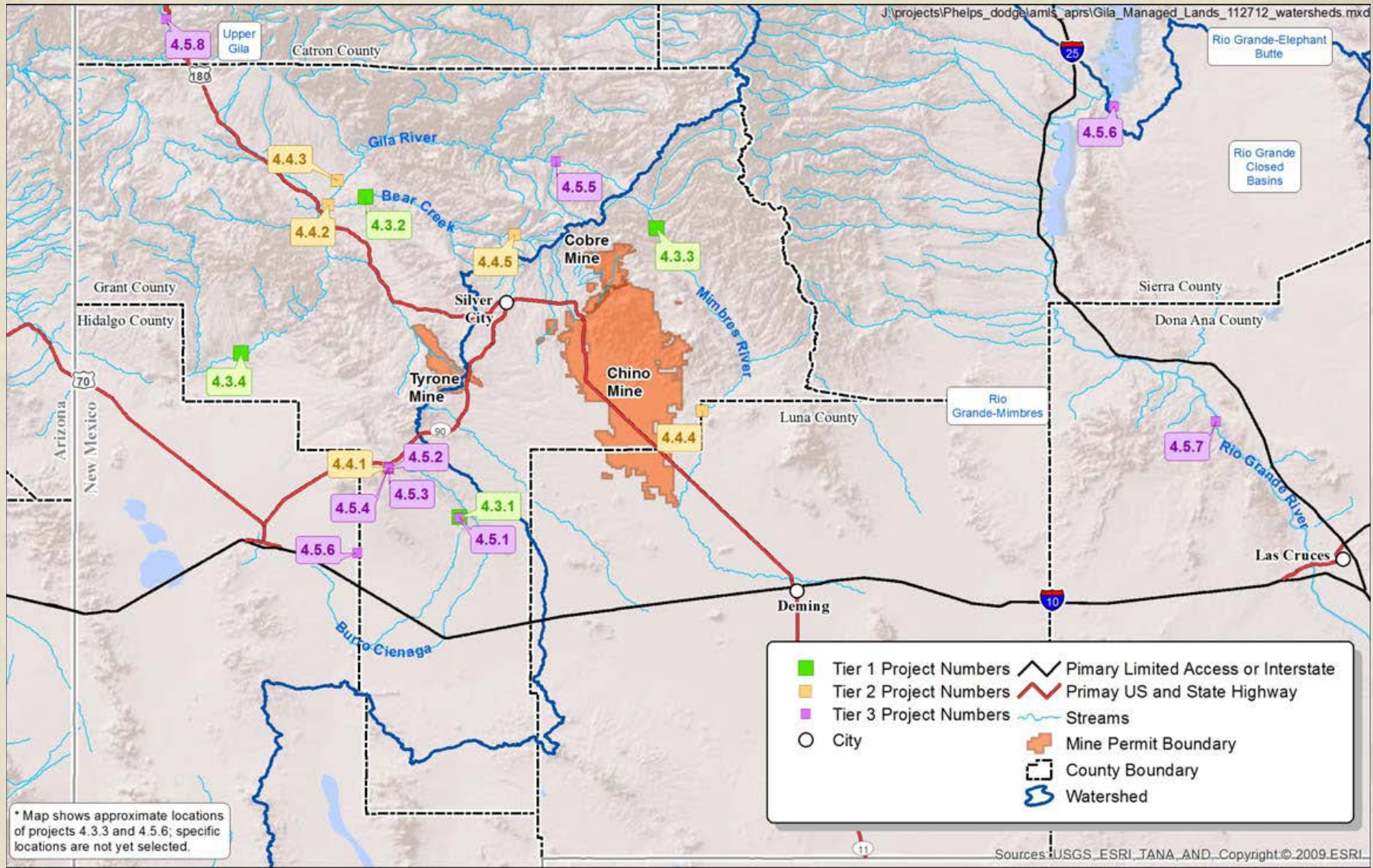


Potential Property Acquisitions in Southwestern New Mexico

September 26, 2013



* Map shows approximate locations of projects 4.3.3 and 4.5.6; specific locations are not yet selected.

Sources: USGS, ESRI, TANA, AND... Copyright © 2009, ESRI

- | | | |
|---|---|--|
| 4.3.1 Burro Cienaga Side Channel, Floodplain, and Low Terrace Restoration | 4.4.3 Porter Property Habitat Protection and Improvement | 4.5.4 Grassland Restoration through Aerial Treatment of Mesquite |
| 4.3.2 Double E Ranch Habitat Protection and Improvement | 4.4.4 River Ranch Habitat Protection and Improvement | 4.5.5 Meadow Creek Restoration |
| 4.3.3 Mimbres River Watershed Wildlife and Habitat Restoration* | 4.4.5 Upper Bear Creek Habitat Protection and Improvement | 4.5.6 Migratory Bird Grassland Restoration* |
| 4.3.4 Redrock Property Habitat Protection and Improvement | 4.5.1 Burro Cienaga Grassland Restoration | 4.5.7 Swan Pond Habitat Restoration |
| 4.4.1 Burro Cienaga Stream Stabilization Restoration | 4.5.2 Burro Cienaga Pinyon and Juniper Restoration | 4.5.8 York Canyon Rehabilitation |
| 4.4.2 Davis Property Habitat Protection and Improvement | 4.5.3 Burro Cienaga Stock Pond Restoration | |



The New Mexico Office of Natural Resources Trustee and the U.S. Fish and Wildlife Service (collectively, the “Trustees”) have engaged in a cooperative Natural Resource Damage Assessment and Restoration (NRDAR) process for the Freeport-McMoRan Copper & Gold Inc. and its associated companies (FMI) mine sites near Silver City, New Mexico. Wildlife and wildlife habitat resources have been injured by hazardous substances released from three copper mining facilities owned by FMI.

The Trustees undertook a wildlife assessment for these three mines in which they assessed and quantified injuries to terrestrial resources, wildlife, and wildlife habitat resources, and successfully brought claims against FMI for terrestrial and wildlife damages. FMI paid \$5.5 million and transferred 289 hectares (714 acres) of grassland to the City of Rocks State Park to settle allegations that the company injured terrestrial and wildlife resources as a result of discharges of hazardous substances from the Chino, Tyrone, and Cobre mines.

The Trustees, in a Draft Wildlife and Wildlife Habitat Restoration Plan, have identified 21 potential restoration projects. Currently of primary interest to NMDGF:

Double E Ranch

Habitat Protection and Improvement

Protect native riparian habitat along **Bear Creek** through the purchase and conservation of the Double E Ranch.

River Ranch

Habitat Protection and Improvement

Protect and restore native riparian habitat along the **Mimbres River** through the purchase and conservation of the River Ranch property.

Redrock Property

Habitat Protection and Improvement

Protect and restore native riparian habitat along the **Gila River** through the purchase and conservation of the Redrock property.

Davis Property

Habitat Protection and Improvement

Protect and restore native riparian habitat along the **Gila River** through the purchase and conservation of the Davis property.

Porter Property

Habitat Protection and Improvement

Protect and restore native riparian habitat along the **Gila River** through the purchase and conservation of the Porter property.

Upper Bear Creek

Habitat Protection and Improvement

Protect native riparian habitat along **Bear Creek** through the purchase and conservation of the Bear Creek Ranch.

Double E Ranch

5,827 acres of private land

BLM grazing allotment - 3,644 acres

State Lands grazing allotment - 2,500 acres

Forest Service allotment - 11,033 acres

10.75 acre ft. of water rights.

3 miles of Bear Creek run through property.

Approx. cost - \$3 million (State Wildlife Grant or PR funds)

Hunting Opportunities – BHS, deer, turkey, quail, javelina, cougar.

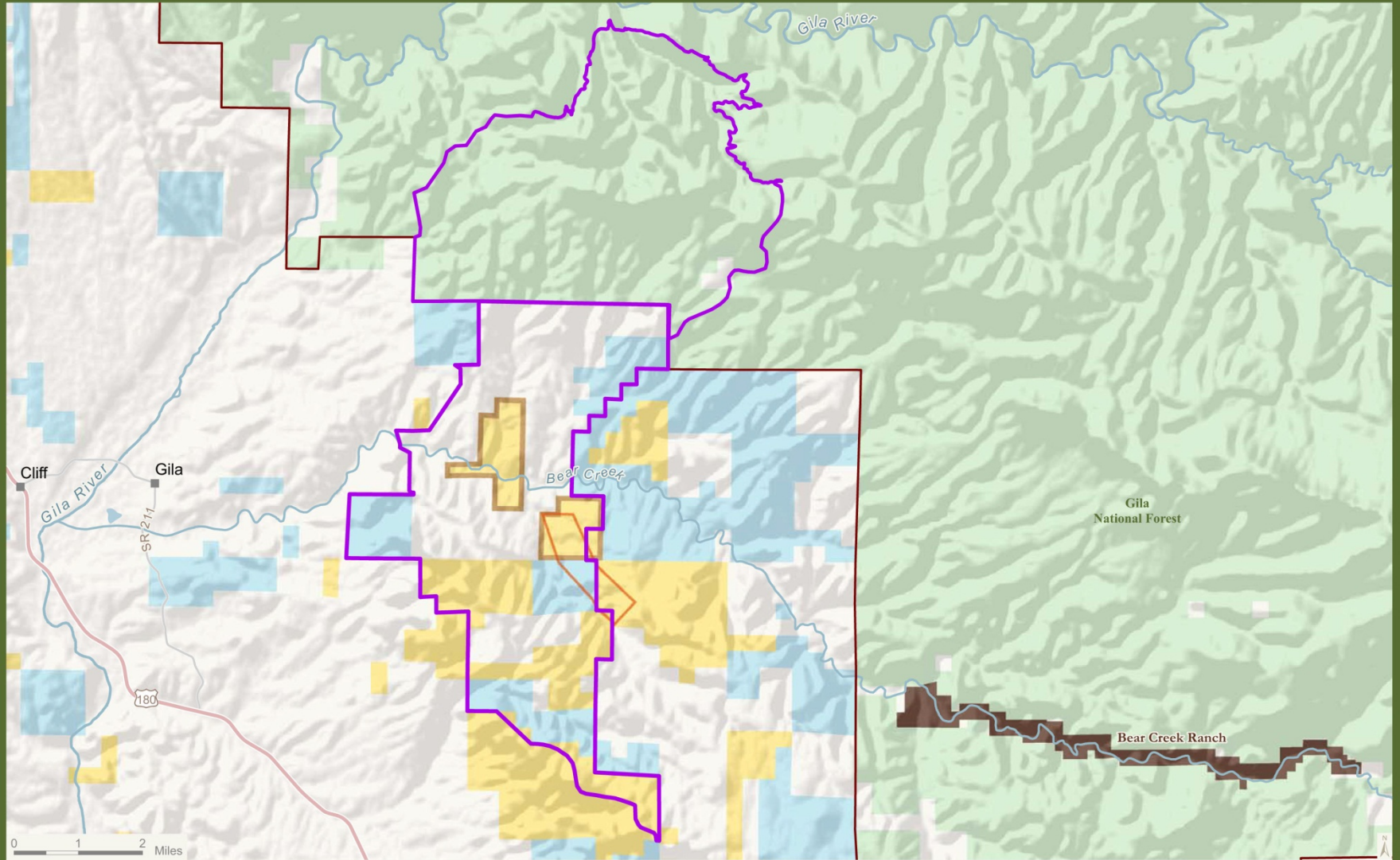
T&E and SGCN – loach minnow, Chiricahua leopard frog, willow flycatcher, yellow-billed cuckoo.

Conservation Education – improvements/facilities need to be resolved.

The Trust for Public Land has an option agreement on the property.

DOUBLE E RANCH PROJECT

GRANT COUNTY - NEW MEXICO



The Trust for Public Land conserves land for people to enjoy as parks, gardens, and other natural places, ensuring livable communities for generations to come.

- Double E Ranch Boundary*
- US Forest Service Boundary
- Completed TPL Project Location
- USFS National Forest
- Bear Creek ACEC
- Bureau of Land Management
- Hell's Half Acre
- State Land

*Project boundary includes US Forest Service grazing/range allotments.

June 24, 2013
Cartography by
The Trust for Public Land
www.tpl.org



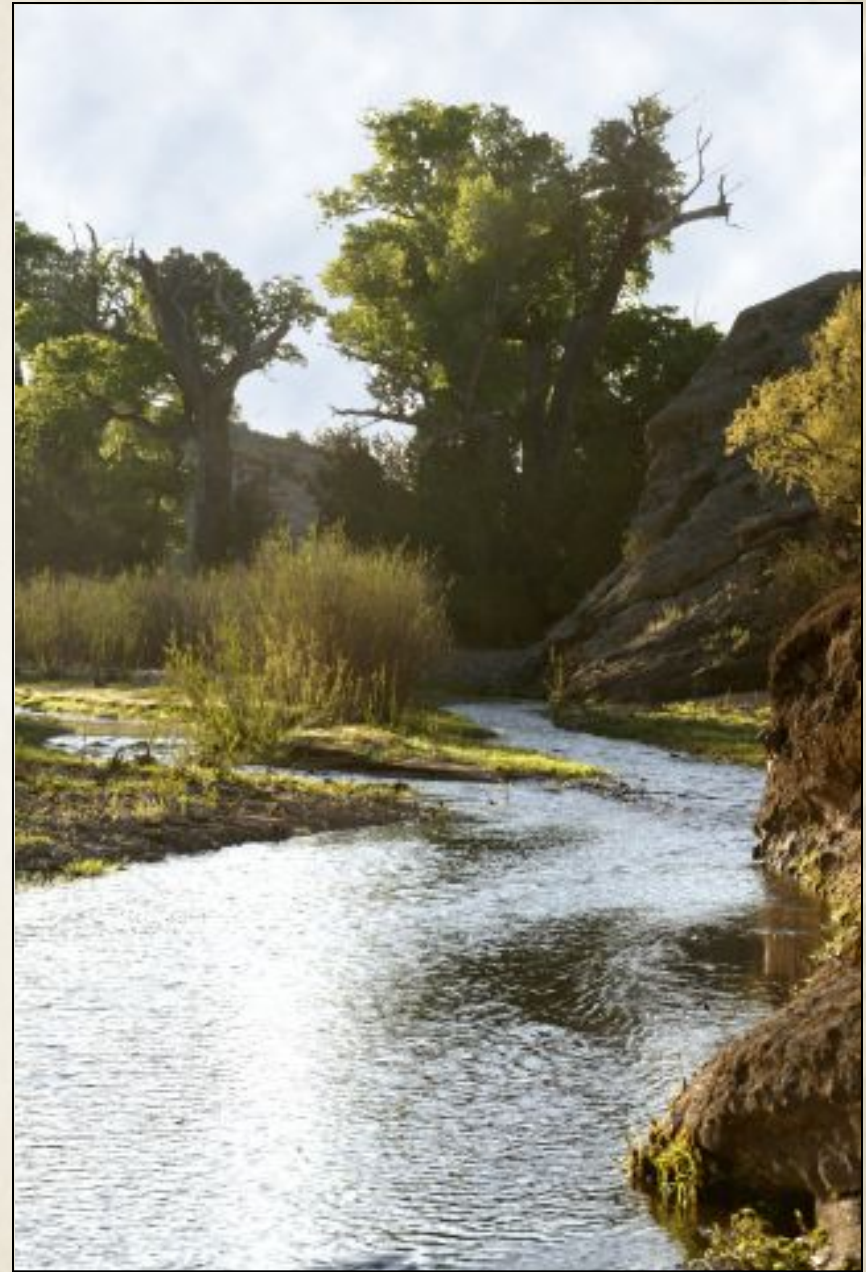
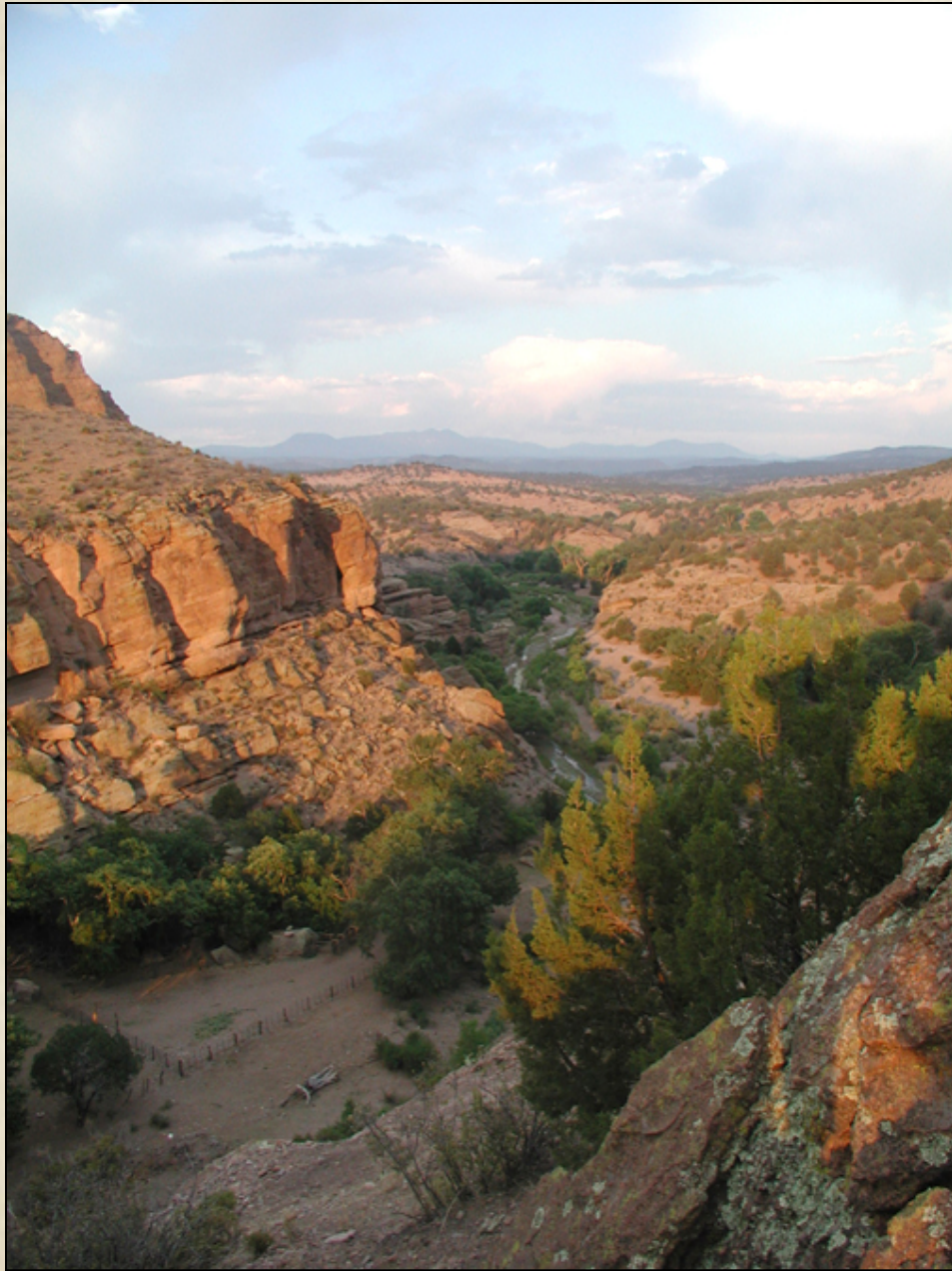




















The River Ranch

1,010 acres of private land

BLM grazing lease (1,800 acres) – 31 AUYL

State Land grazing lease (1,120 acres) – 17 AUYL

Water Rights - 38 acre feet per annum of appurtenant water rights from the Mimbres River (with a priority date of 1880) to irrigate 12.8 acres of the property.

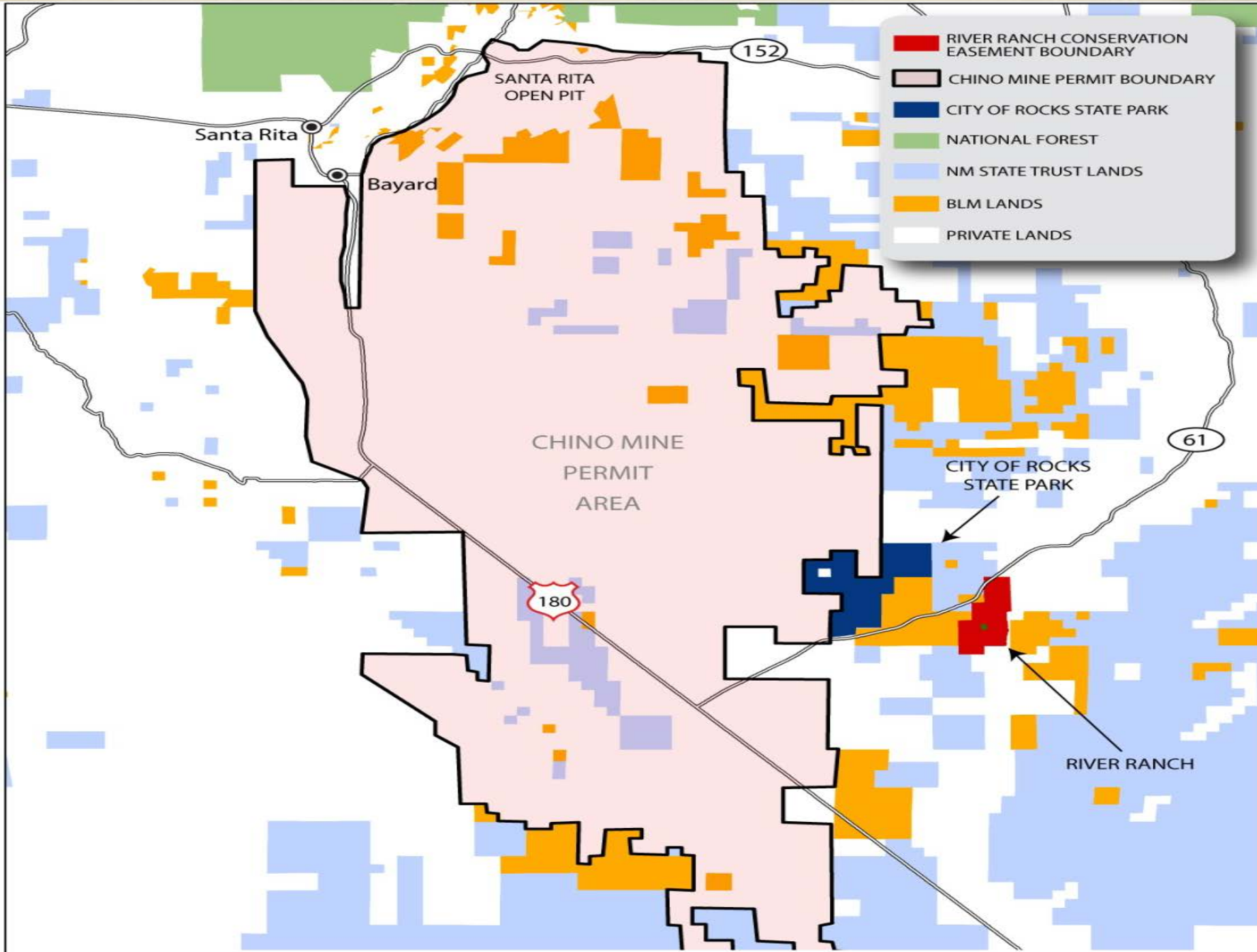
Approx. cost - \$700,000 (State Wildlife Grant or PR funds)

Hunting Opportunities – Deer, turkey, quail, doves, javelina, cougar.

T&E and SGCN – A total of 16 Species of Greatest Conservation Need (SGCN) (NMDGF 2006) have been documented on River Ranch, including mule deer, black bear, Arizona gray squirrel, mourning dove, and band-tailed pigeon. (T&E include Bells vireo, Yellow-billed cuckoo.)

Conservation Education – 3,200 sq. ft. main house, 1200 sq. ft. guest house, 720 sq. ft. mobile home, 240 sq. ft. historic adobe cabin, a 1,300 sq. ft. shop and a 475 sq. ft. hay barn.

In April 2011, NMLC and the State Forestry Division used \$450,000 of state funding to purchase a conservation easement over the entire property .



- RIVER RANCH CONSERVATION EASEMENT BOUNDARY
- CHINO MINE PERMIT BOUNDARY
- CITY OF ROCKS STATE PARK
- NATIONAL FOREST
- NM STATE TRUST LANDS
- BLM LANDS
- PRIVATE LANDS

SANTA RITA
OPEN PIT

Santa Rita

Bayard

CHINO MINE
PERMIT
AREA

CITY OF ROCKS
STATE PARK

RIVER RANCH

152

61

180











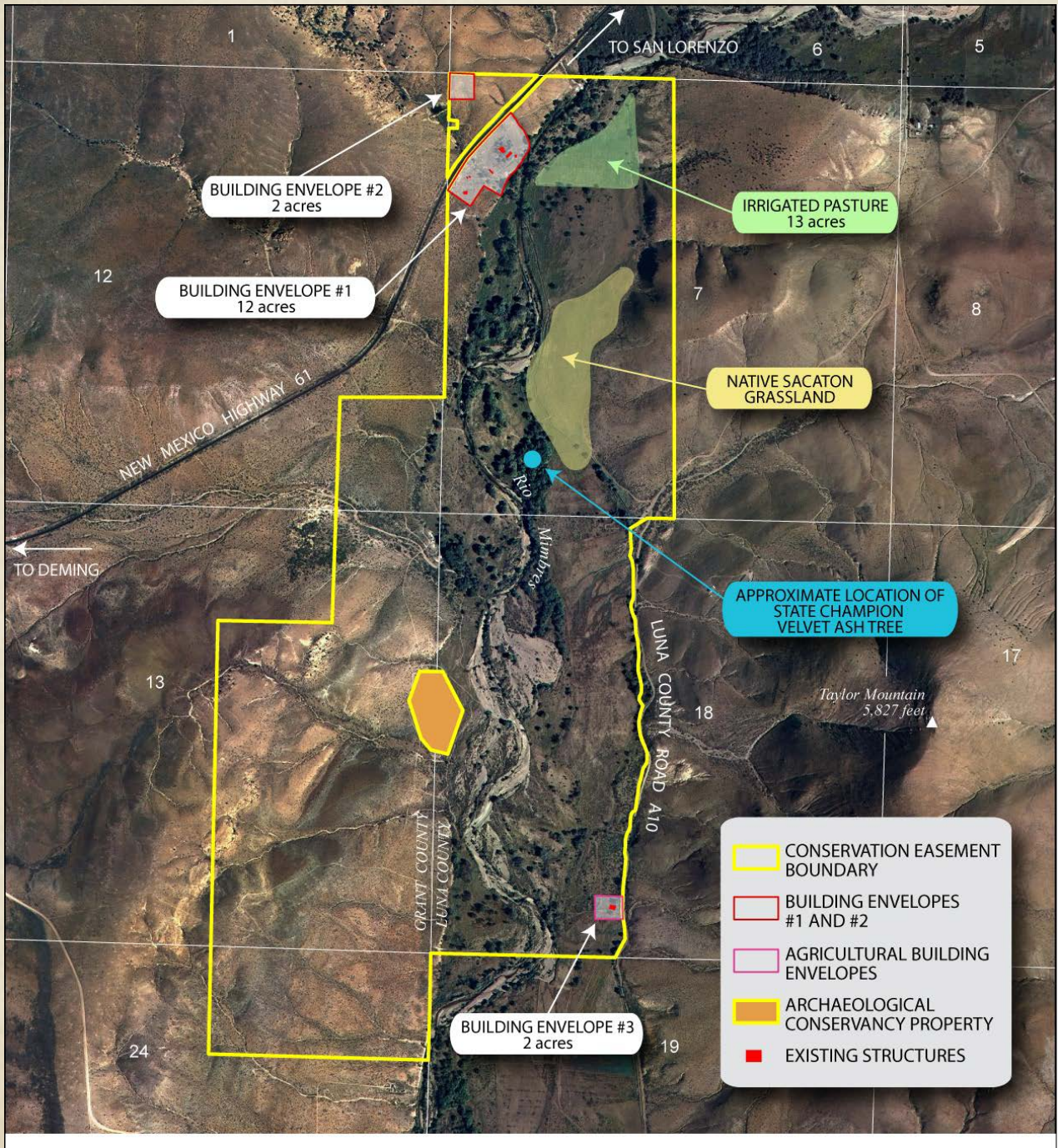
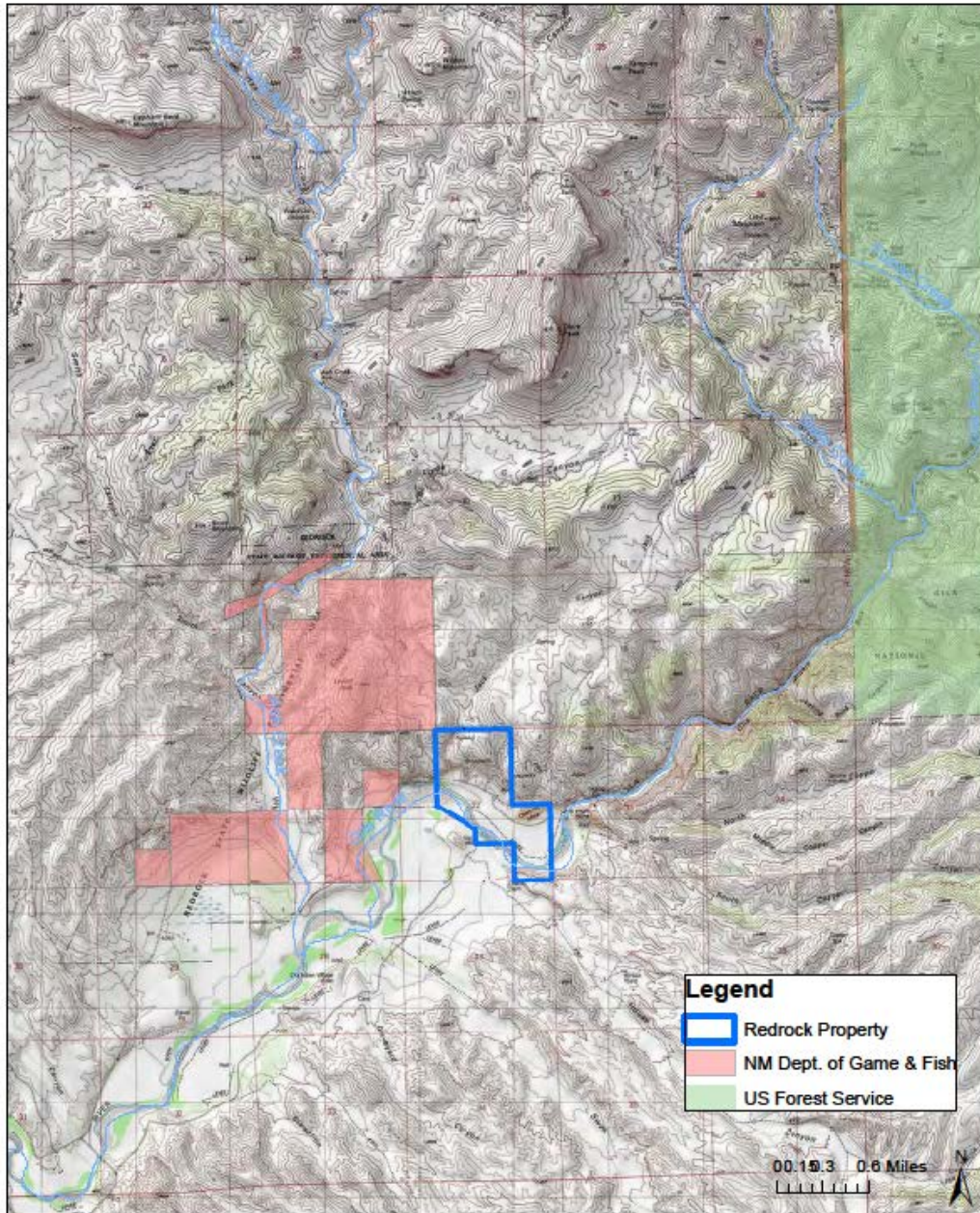


Figure 1: Redrock Overview



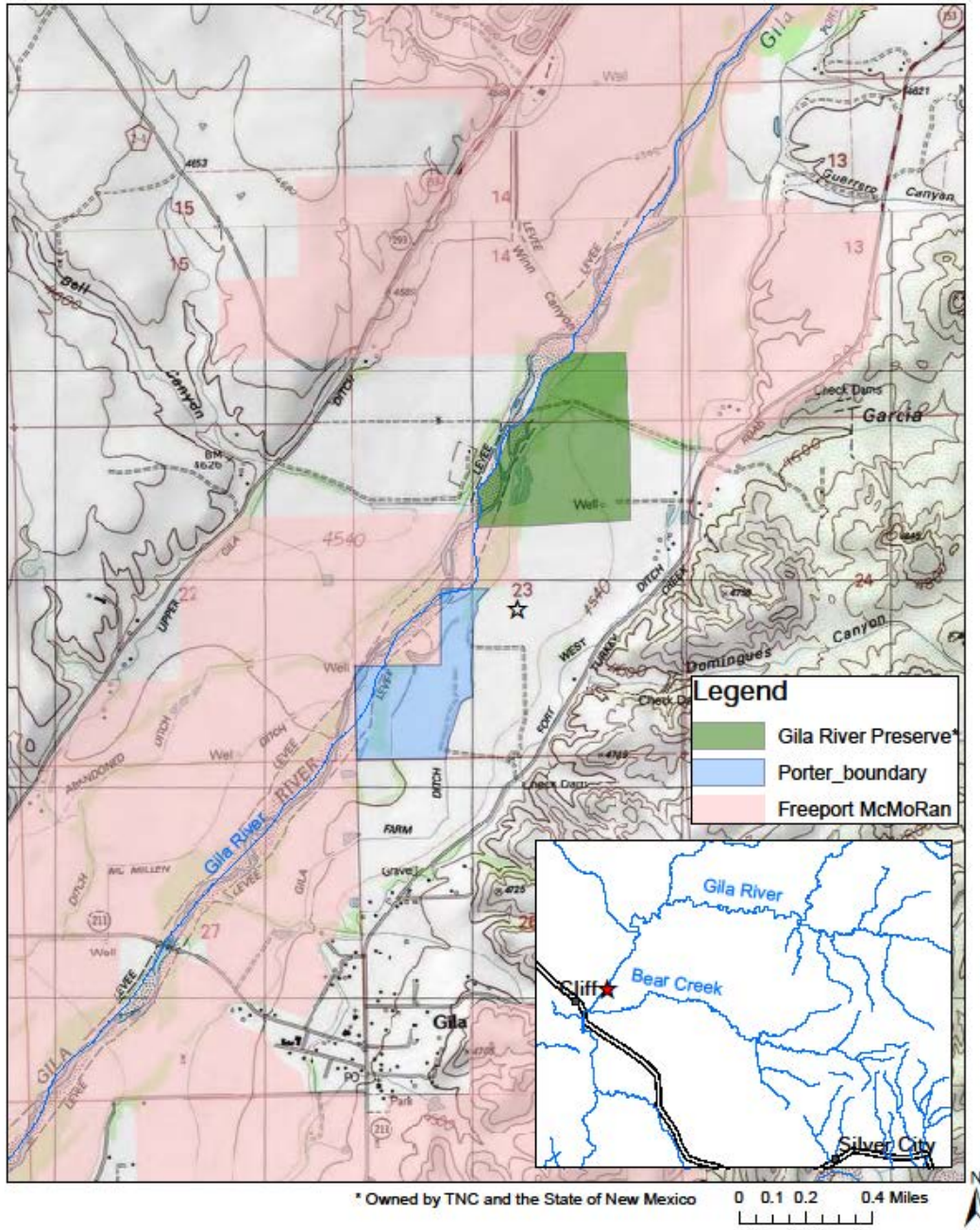
* Owned by TNC and the State of New Mexico

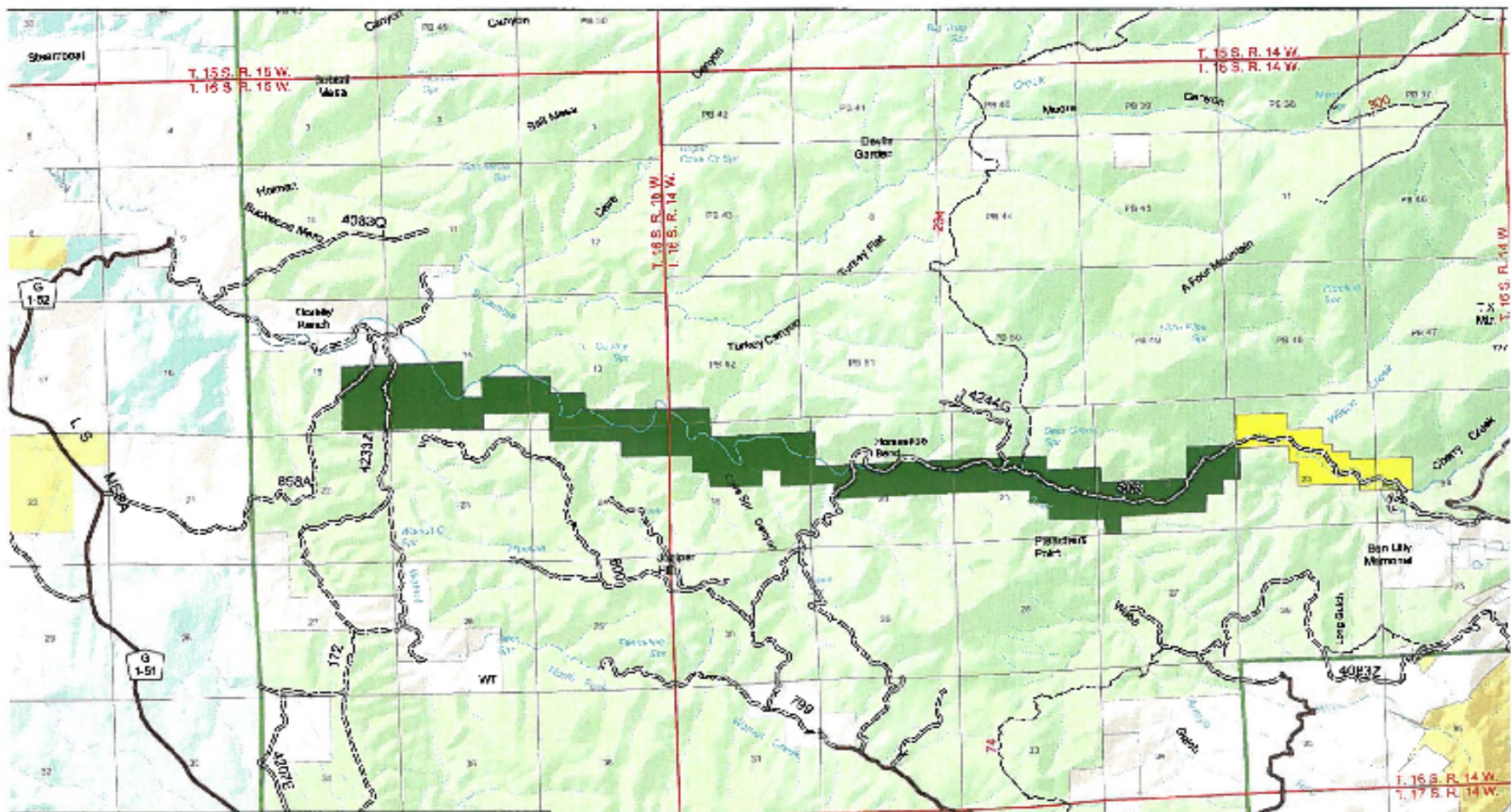


Davis Property



Figure 3: Porter Location





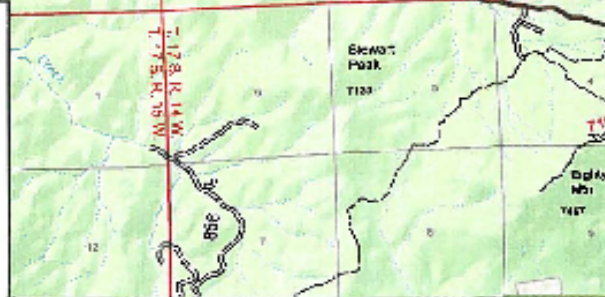
Upper Bear Creek Purchase Proposal

The proposed purchase consists of 220 acres located in Grant County, New Mexico

U.S. Forest Service - Southwest Region
Gila National Forest
New Mexico Congressional District No. 2

Disclaimer: The USFS is not responsible for any errors or omissions regarding the data displayed on this map, and reserves the right to correct, update, modify, or replace the information without notice.

Map Creation Date - July 9, 2012 Sheet 1 of 1
Map Revision Date -



Legend

- Upper Bear Creek Purchase Proposal
- Adjacent Land Purchased 2010
- Surface Ownership
- US Forest Service
- Bureau of Land Mgmt.
- Private
- State

0 0.5

1:62,500

Upper Bear Creek – Bear Creek Ranch

- Elevation at creek 1,891-1,956 m (6,205 – 6,416 ft)
- 89 ha (220 acres) total area
- 2.4 km (1.5 mi) of perennial stream length
- 11.7 ha (28.8 ac) riparian habitat
- 0.4 ha (1 acre) pond (Ben Lilly Pond)
- Vegetation is pinyon (*Pinus edulis*), alligator juniper (*Juniperus deppeana*), and evergreen oak (*Quercus* spp.) woodlands with a mix of Ponderosa pine (*Pinus ponderosa*).
- Grazing allotment is Walnut Creek Allotment and A Four Mountain Pasture. It is active for cattle and horses.
- Pond is used by waterfowl, a bird group that was substantially impacted by the mine. Pond might support chub (*Gila* spp.) and Chiricahua leopard frog (*Lithobates chiricahuensis*) if appropriate.

Questions

