



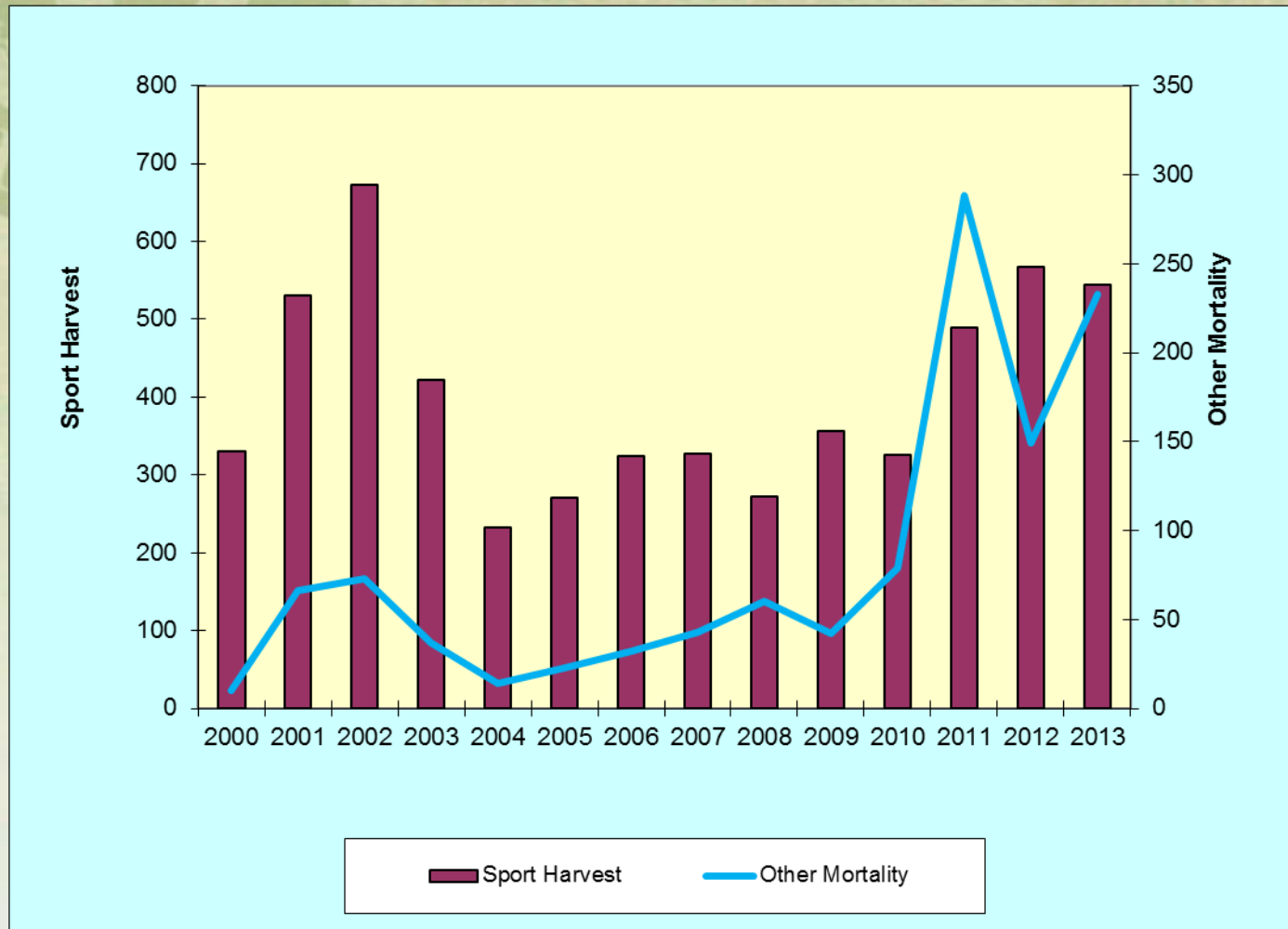
Wildlife Management Division

Nuisance Bear Management and Diversionary Feeding Policy

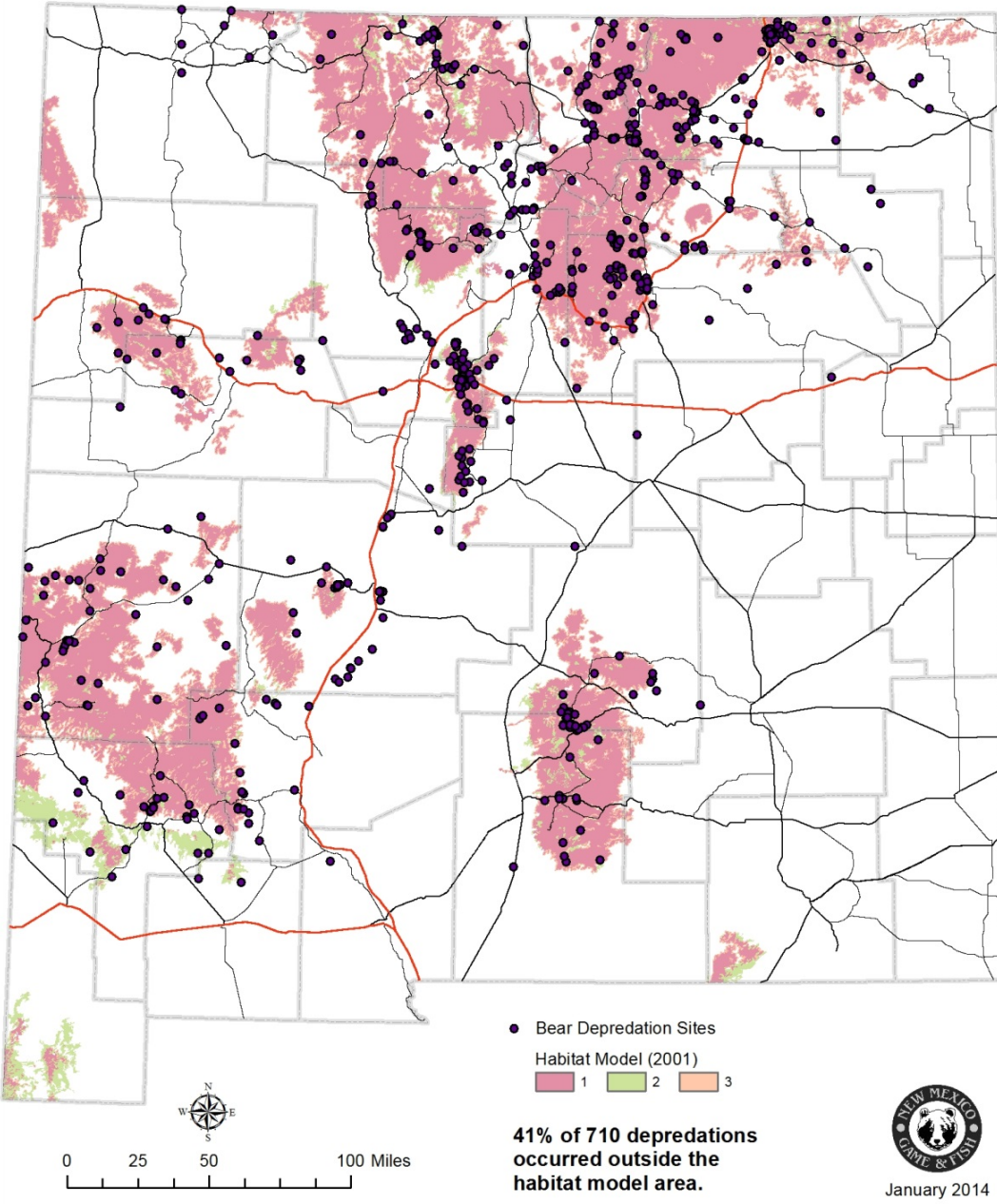
March 20, 2014

**New Mexico State Game Commission Meeting
Las Cruces, NM**

Black Bear Mortality Data from 2000-2014

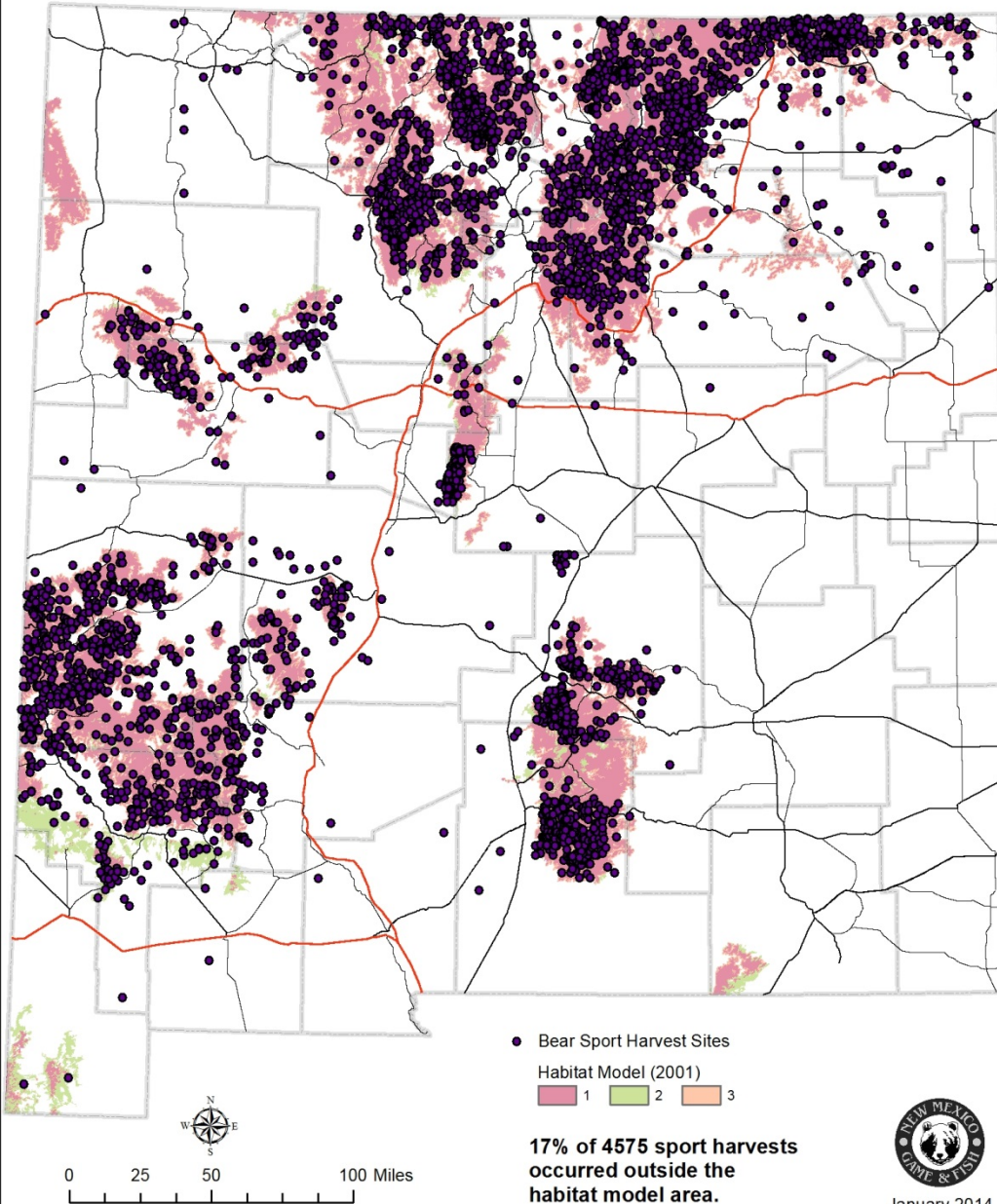


Bear Depredation Sites (2000-13)
and Habitat Model (2001)



Map of Bear Population and Depredation /Nuisance Mortality Locations

Bear Sport Harvest Sites (2000-13)
and Habitat Model (2001)



Map of Bear Population and Sport Harvest Locations

Negative Aspects of Diversionary Feeding

- US Forest Service prohibits the feeding of wildlife on Forest Service land in New Mexico
- Based on recent bear incidents in neighboring states, NMDGF could incur liability for any incident in which our actions alter natural bear behavior
- Nuisance bears are already feeding in human dominated landscapes

Negative Aspects of Diversionary Feeding

- Habituates bears to human provided food
- There are no feeding locations that are away from the public
- Alters the natural bear reproduction cycle.



Questions?

Nuisance Bear Management and Diversionary Feeding Policy

- Provides clear direction against feeding bears for any reason
- Is on AFWA's agenda to be adapted across the country and provinces
- Is adaptable to different management goals