



Habitat Restoration

June 26, 2014

**New Mexico State Game Commission Meeting
Mescalero, NM**

Wildlife Management Division

Habitat Restoration Program Goals

Partner with land management agencies, NGOs, and other entities to prioritize, plan and implement landscape restoration projects on a *STATEWIDE* level and consolidate financial and material restoration resources.

- ❖ *Improve mule deer, elk, pronghorn, turkey and other wildlife habitat over large landscapes across the state*
- ❖ *Enhance watershed health*
- ❖ *Reduce the threat of catastrophic wildfire*

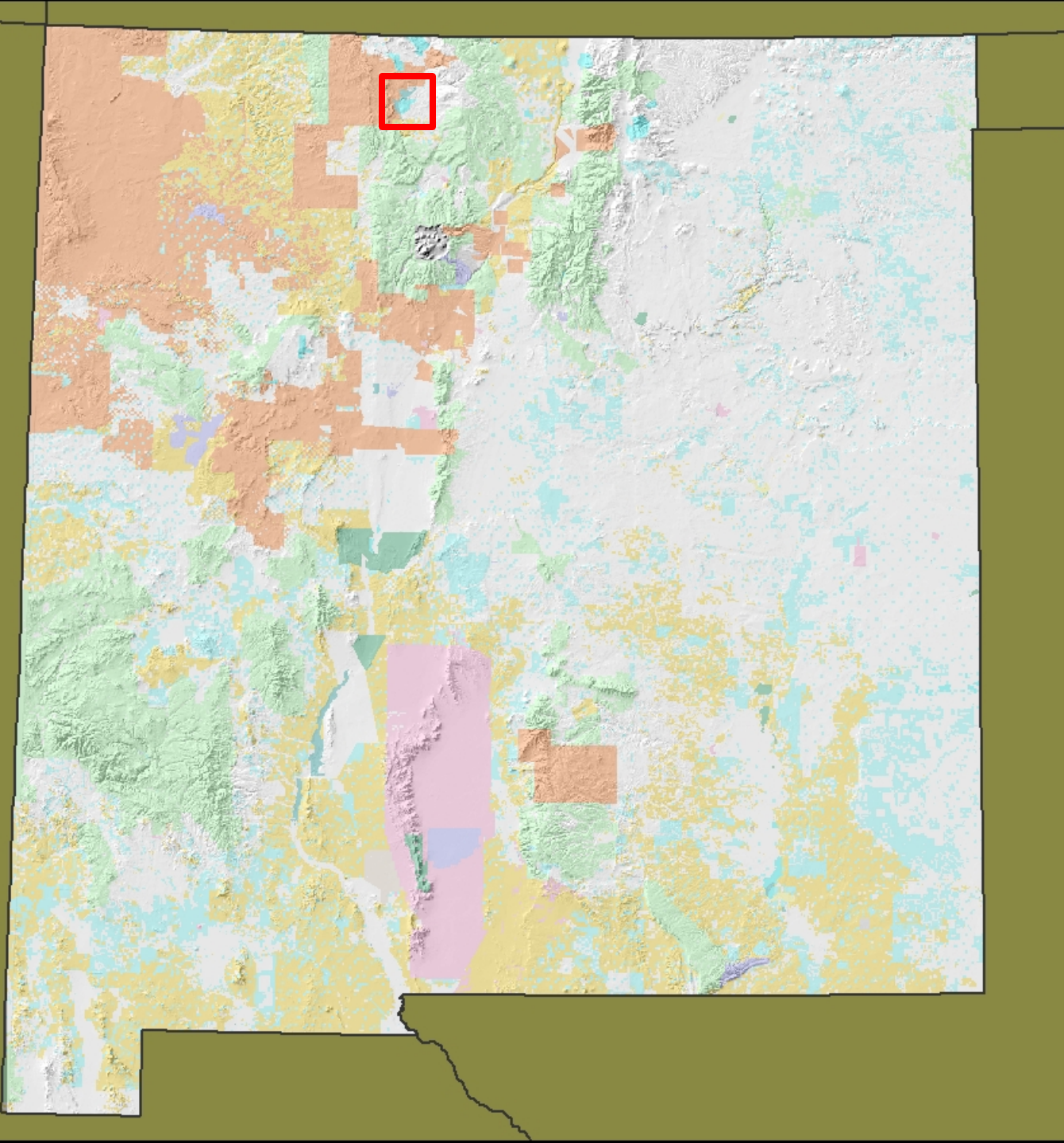


Wildlife Management Division Habitat Restoration Funds

- **Habitat Management & Access Validation (HMAV) Fund**
- **Habitat Stamp Program (HSP) Fund**
- **Big Game Habitat Enhancement (BGE) Fund**

HMAV Funds

Rio Chama
Wildlife
Management
Area





Rio Chama WMA Forest Thinning





Rio Chama WMA Sagebrush Rehab

Little/No Understory and Decadent Sagebrush

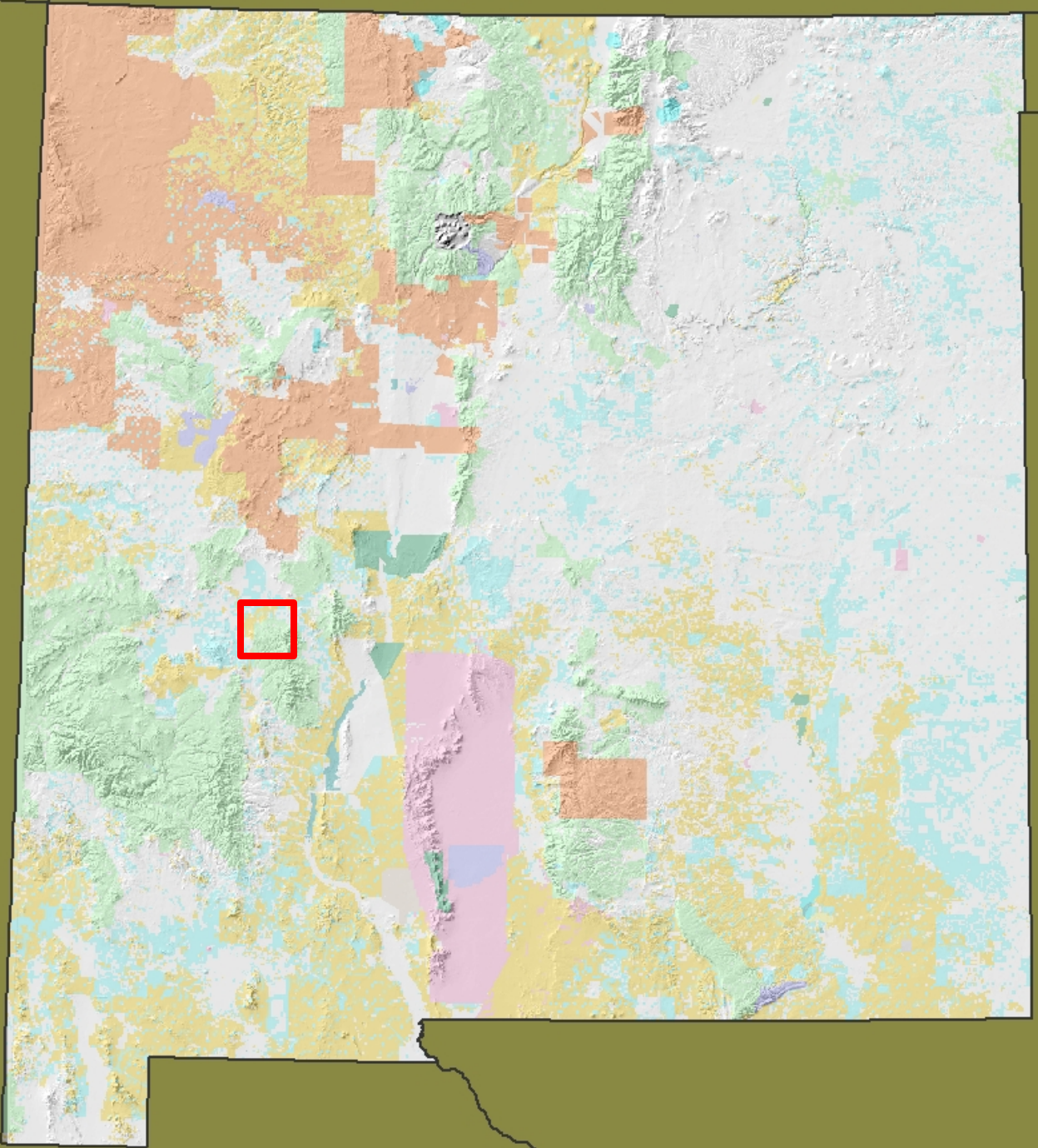


Increase in grasses, forbs and young sagebrush



HSP Funds

NW San
Mateo Mtns
Habitat
Restoration



Meadow Restoration



Forest Restoration



San Mateo Mountains Prescribed Fire Results



Water Development Use



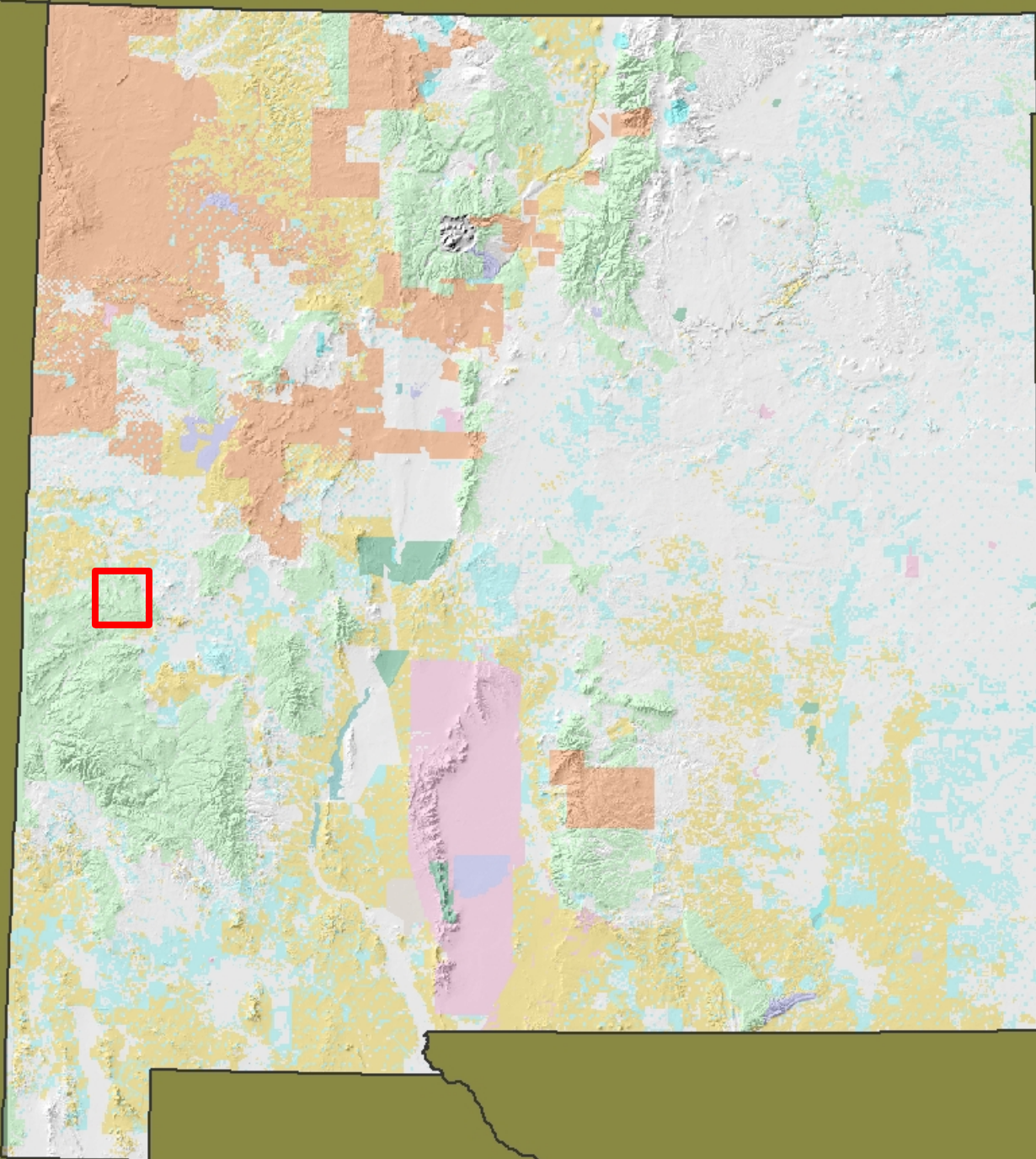
San Mateo Mountains Restoration Partnership



**New Mexico
Habitat Stamp
Program**
Dale Hall Wildlife Water
This habitat improvement project is dedicated
to Dale's many years of service towards
wildlife habitat protection and enhancement.
For more information about this project
Contact: 505-825-0412

BGE Funds
Slaughter
Mesa

Gila National
Forest



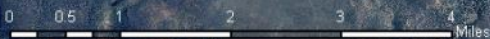
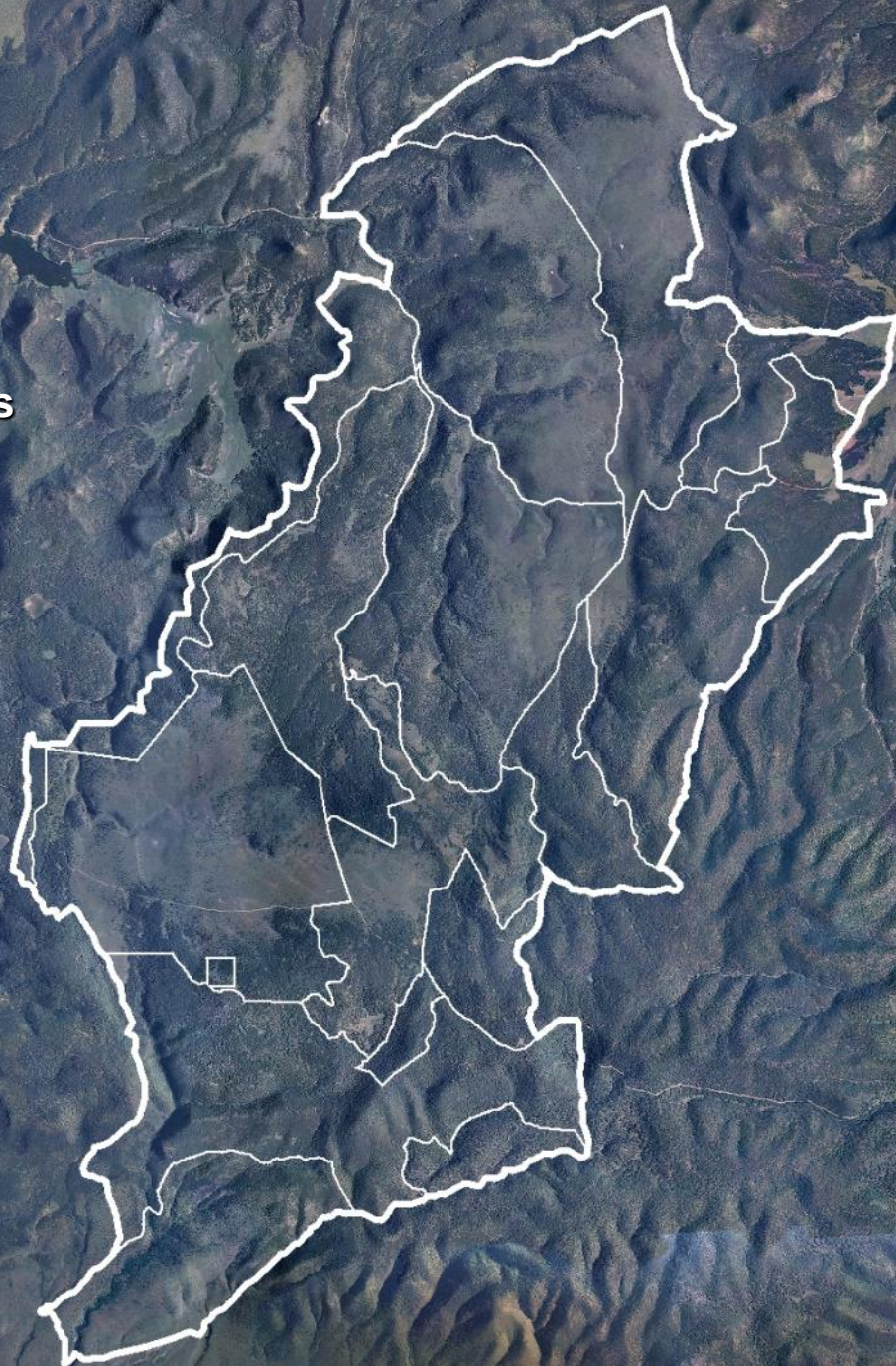
Slaughter Mesa Landscape Boundary
32,000 Acres

USFS/DGF Collaborative Design

**Ponderosa Pine, Piñon/Juniper, Douglas
Fir, Oak, Riparian, Grassland Habitats**

**Habitat Restoration for elk, mule deer,
pronghorn, turkey, other species**

**Enhancement Funds have supported
NEPA, Archeological clearances,
thinning, burning**



Existing Conditions



Thinning Results





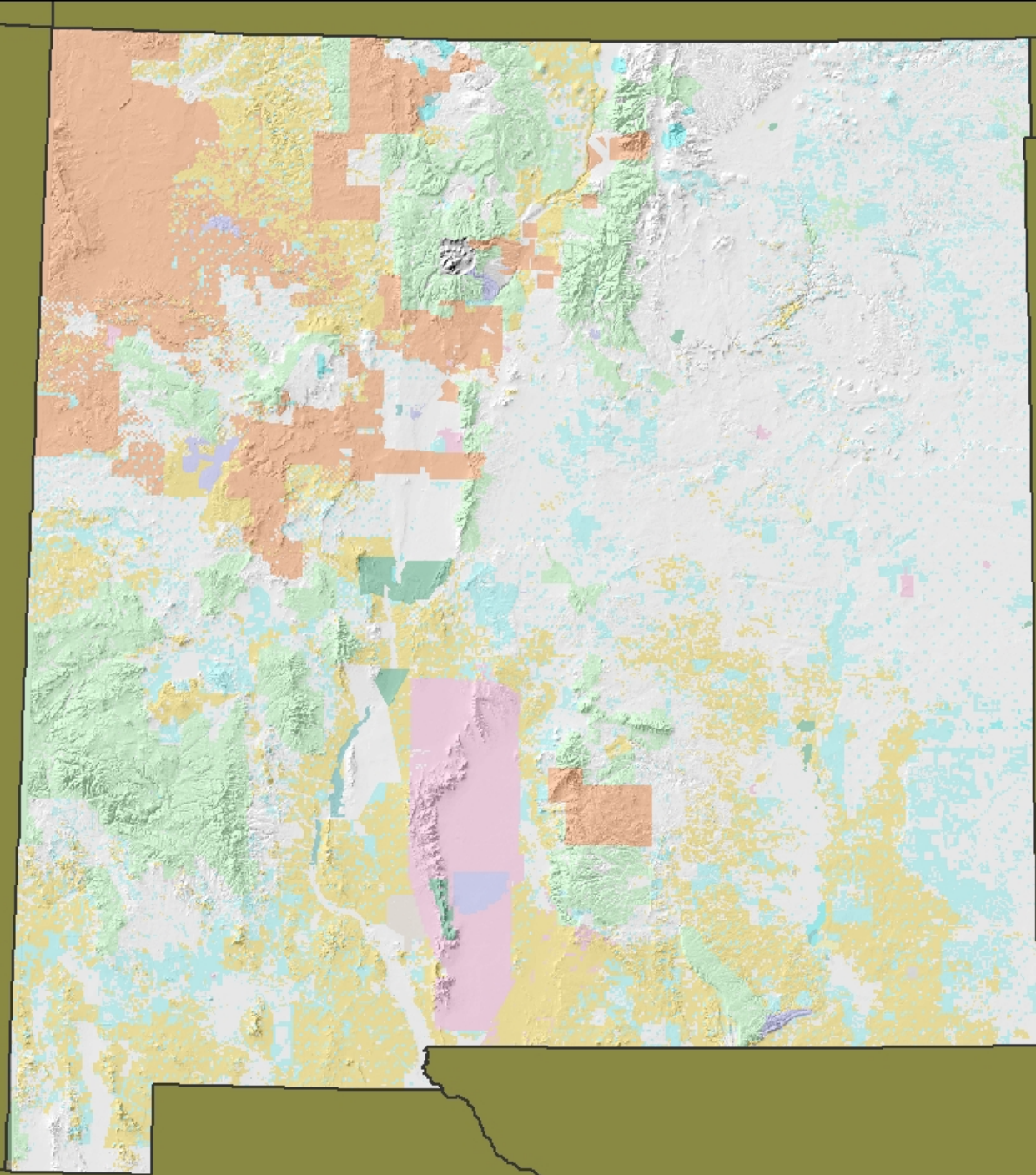
Grassland Restoration



Slaughter Mesa Restoration

The Quemado Ranger District and the New Mexico Department of Game & Fish collaborated on this project to improve habitat for Elk, Pronghorn, Mule Deer, Turkey, and other wildlife. This project also reduces hazardous fuels and improves watershed and rangeland conditions.



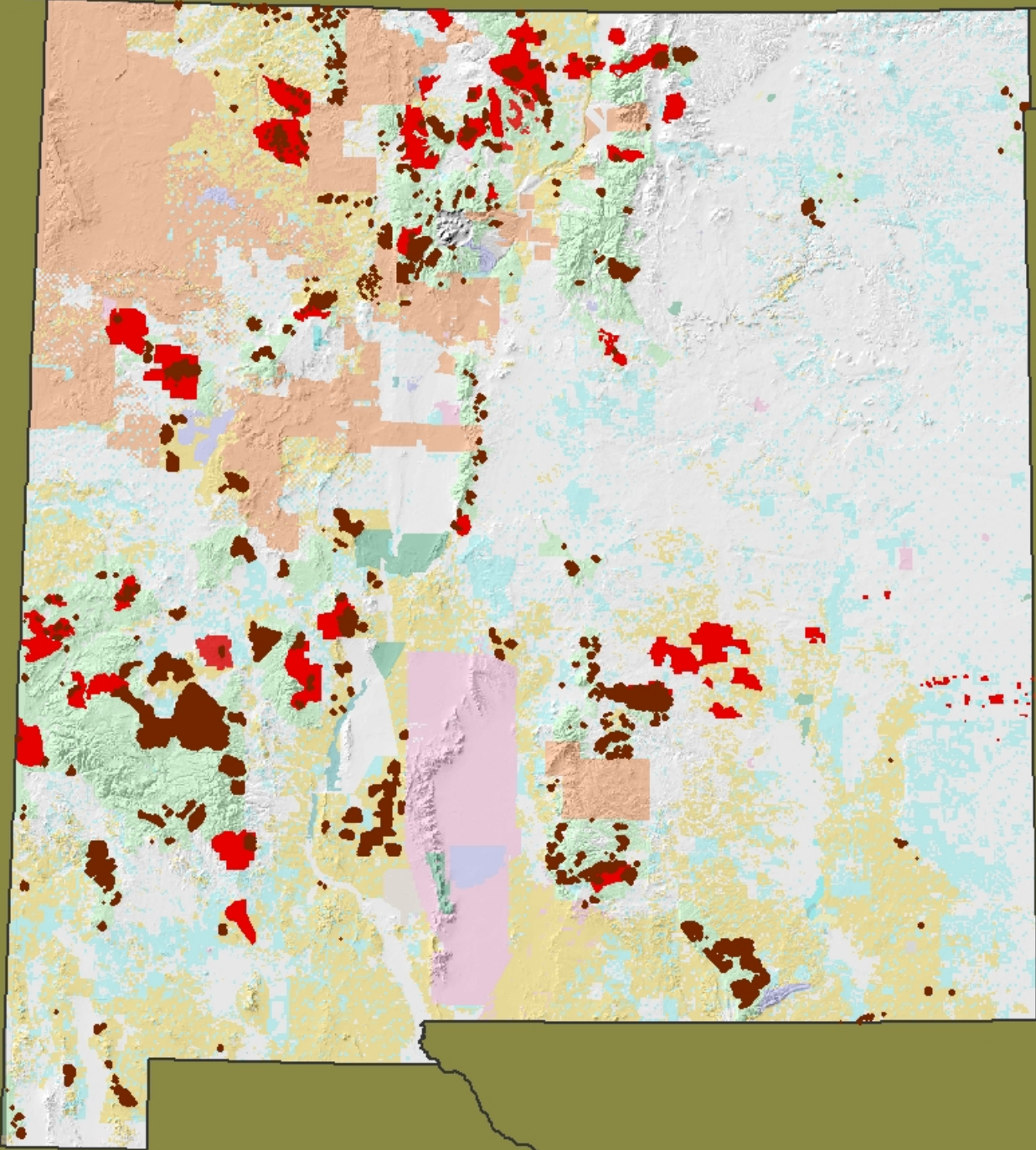


1986 – 2014

**Projects
utilizing
Department
Resources**



**Planned
Project
Landscapes**

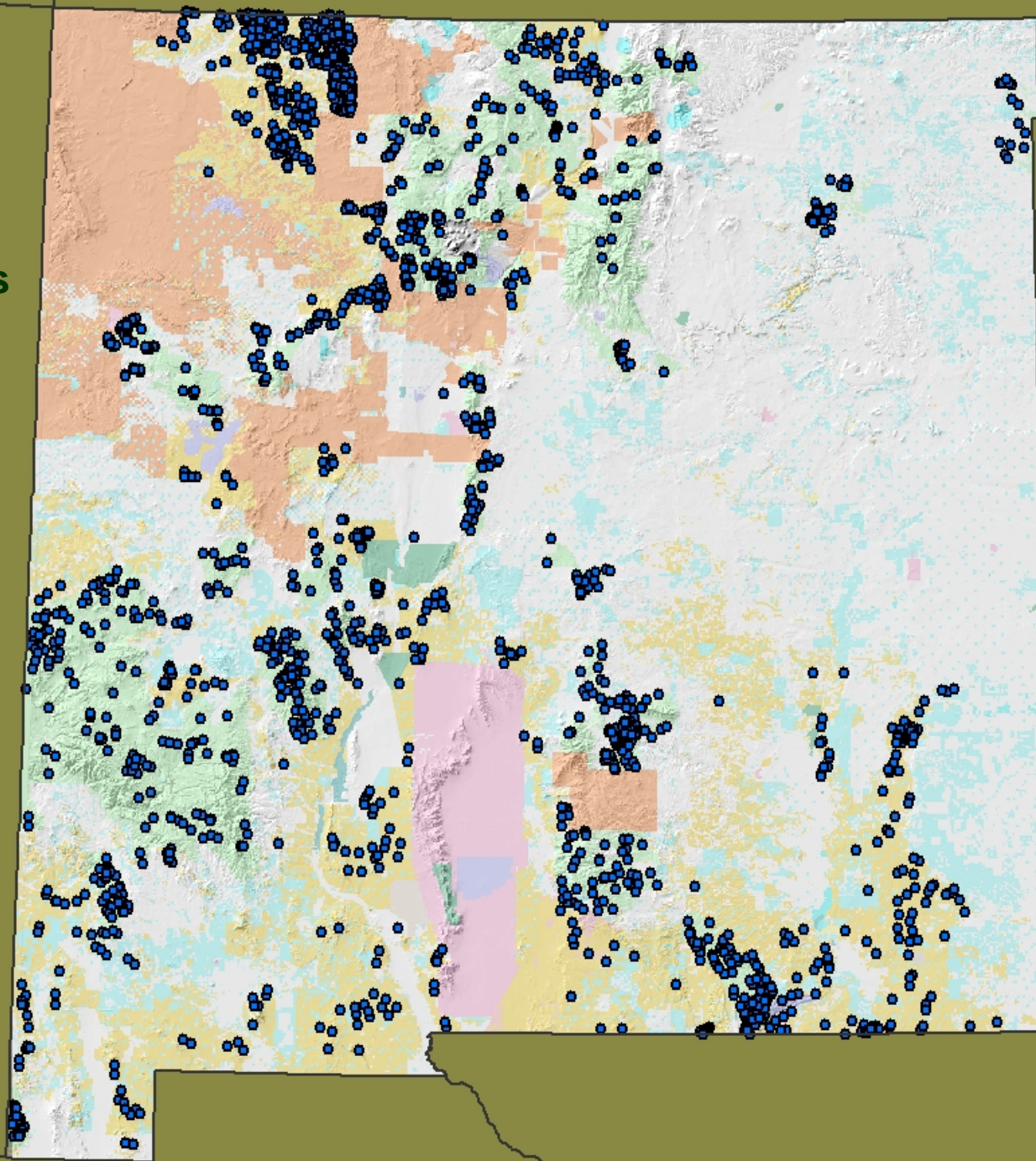


Questions



1986 – 2014

**Wildlife Water
Developments**

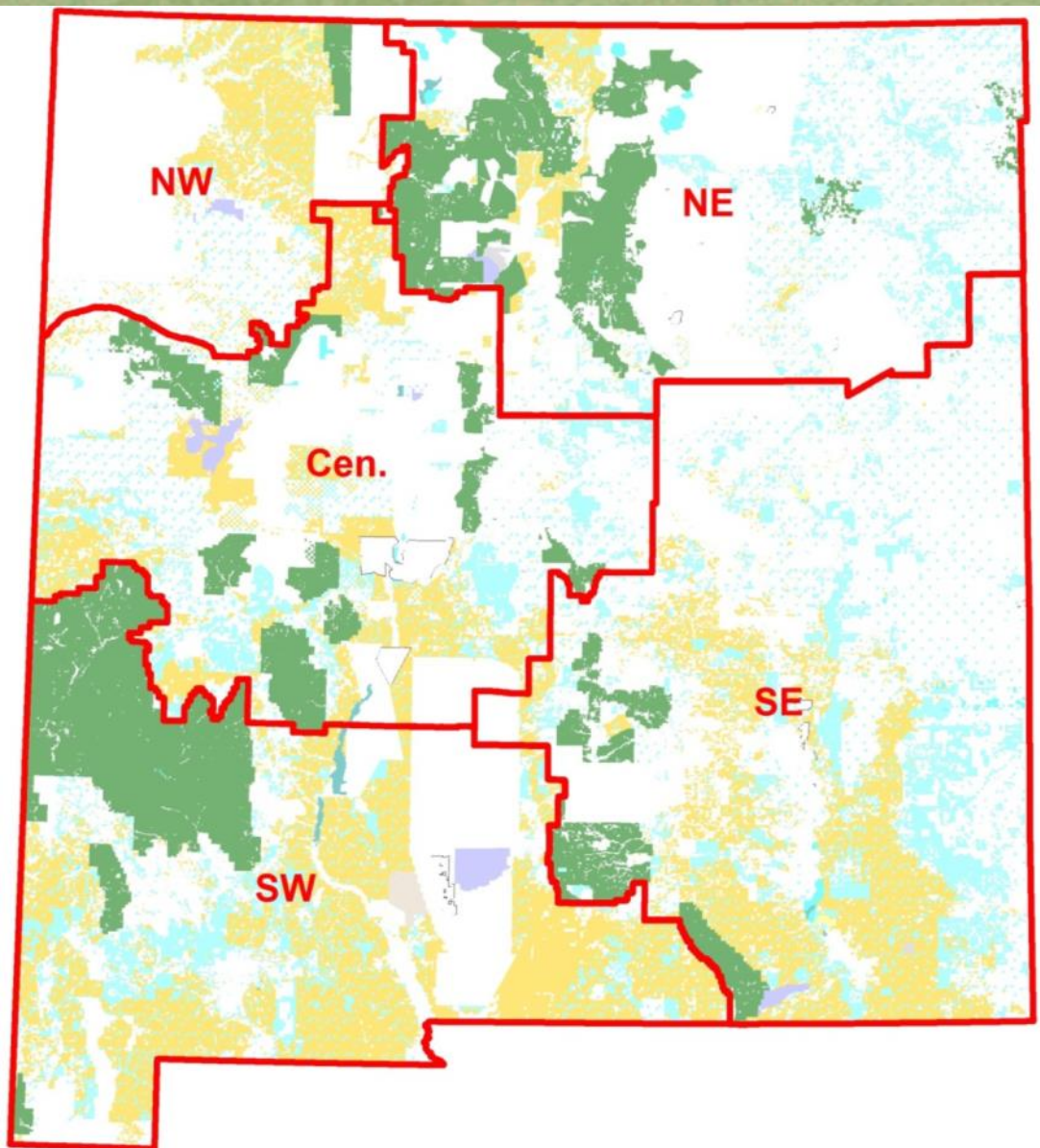


HSP funding formula adopted by SGC Feb. 2012

STATE ALLOCATION:

\$742,300

REG.	AGENCY	FS/BLM ACRES	% Acres of State	% Acres of Region	\$ Base Guarantee	\$ Allocated to Regions	Region Total \$
CEN	Rio Puerco	1,012,000	4.4%	24.4%	\$18,137		
	Socorro	1,504,070	6.6%	36.3%	\$26,956		
	Cibola	1,625,689	7.1%	39.3%	\$29,136		
	Region Total	4,141,759	18.1%	100.0%	\$74,230	\$67,155	\$141,385
NE	Taos	564,000	2.5%	15.6%	\$11,610		
	Carson	1,344,774	5.9%	37.3%	\$27,683		
	Kiowa NG	130,000	0.6%	3.6%	\$2,676		
	Santa Fe	1,567,181	6.8%	43.5%	\$32,261		
	Region Total	3,605,955	15.8%	100.0%	\$74,230	\$58,467	\$132,697
NW	Farmington	1,161,113	5.1%	88.3%	\$65,570		
	Jicarilla RD	153,355	0.7%	11.7%	\$8,660		
	Region Total	1,314,468	5.7%	100.0%	\$74,230	\$21,313	\$95,543
SE	Carlsbad	2,000,000	8.7%	40.9%	\$30,353		
	Roswell	1,620,077	7.1%	33.1%	\$24,587		
	Lincoln	1,271,068	5.6%	26.0%	\$19,290		
	Region Total	4,891,145	21.4%	100.0%	\$74,230	\$79,306	\$153,536
SW	Las Cruces	5,568,577	24.3%	62.3%	\$46,251		
	Coronado	68,617	0.3%	0.8%	\$570		
	Gila	3,300,000	14.4%	36.9%	\$27,409		
	Region Total	8,937,194	39.0%	100.0%	\$74,230	\$144,909	\$219,139
State Total		22,890,521	100.0%		\$371,150	\$371,150	\$742,300



Citizen Advisory Committees

- 5 committees
- 7 member committee
- 5 sportsmen/women
- 1 non-sportsmen wildlife
- 1 permittee (grazing, oil/gas)
- Appointed by the State Game Commission & serve three year terms
- All 35 terms are expired



Habitat Stamp Program Statutes and Rules

- **16USC670a Sikes Act**
- **NMSA 17-2-1 Commission powers**
- **19 NMAC 34.6 Public Land User Stamp**



Base Allocation

- 1/2 budget set aside as “base funds”
- Divides *base funds* equally to regions (10% to each region).
- Within region, then divides *base funds* to agencies by land mass.
- Agencies do not need to compete for base funding.
- Base allocation can be used to maintain existing HSP projects and to fund agency priority projects.



Land Mass Allocation

- 1/2 budget set aside as “land mass” funds.
- Distributes *land mass funds* to regions based upon their percent of land mass within the state.
- Within region, then *land mass funds* distributed on project by project basis through competition as ranked by citizens.