



Deer Rule 19.31.13 NMAC

August 28, 2014

New Mexico State Game Commission Meeting

Santa Fe, NM

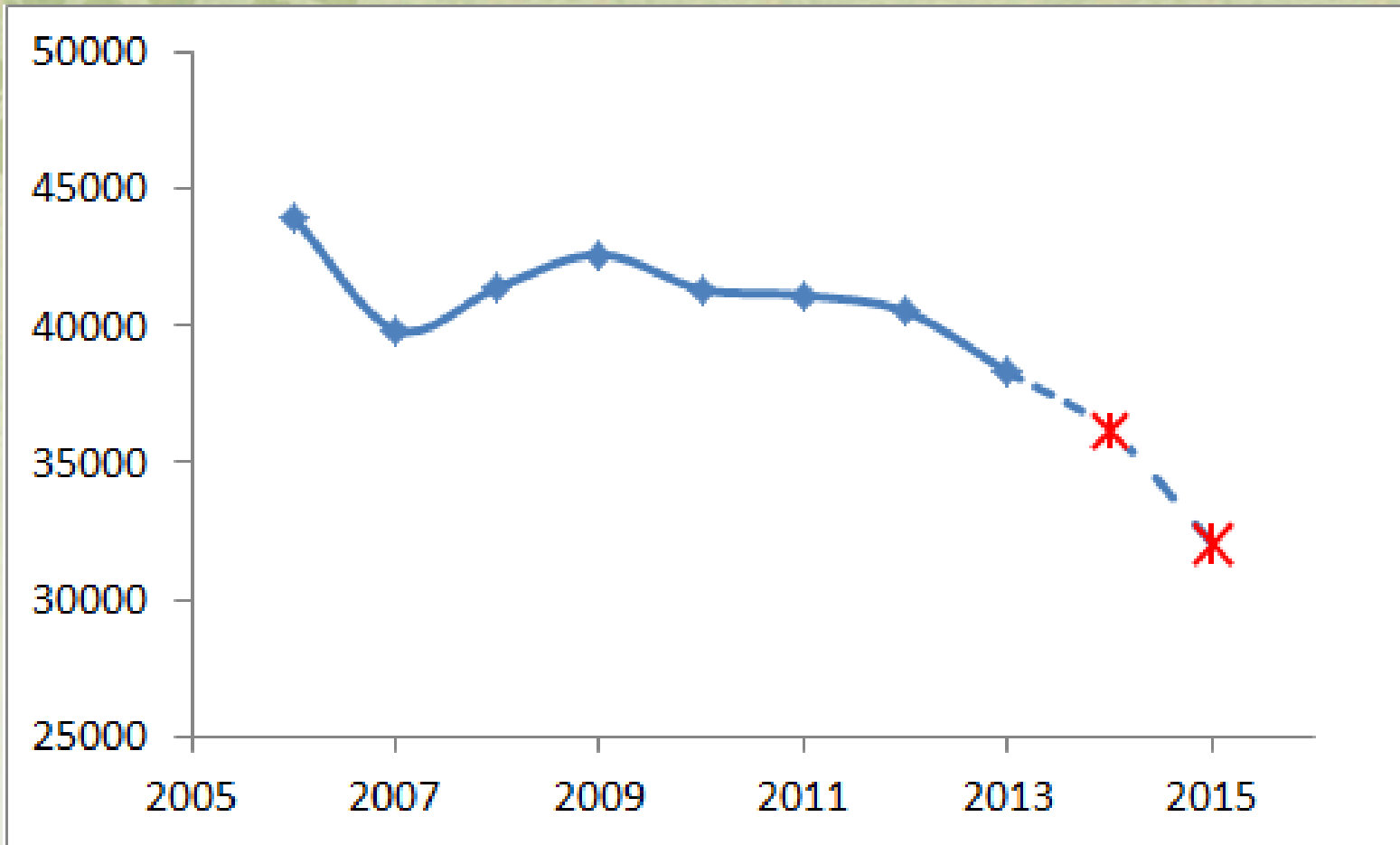
Harvest Data

Statewide Public Draw and Private Land License Totals 2013-2014

Hunt Code	GMU(s)	Weapon	Hunt Dates	Licenses Sold	# Hunters Reporting	Percent Reporting	Success Rate	Estimated Harvest		Satisfaction Rating	Days Hunted
								Bucks	Does		
All	Statwide	Archery	All	7,629	6,903	90%	22%	1,407	42	3.2	6.6
All	Statwide	Muzzleloader	All	5,663	5,207	92%	20%	992	8	2.9	3.6
All	Statwide	Rifle	All	23,802	20,427	86%	26%	5,628	65	3.0	3.5
<i>Over The Counter - Estimate</i>			All	1,207	0	0%	44%	483	10	3.5	3.7
Grand Total		All	All	38,301	32,537	85%	25%	8,509	124	3.0	4.1

- 38,301 licenses sold
- 25% Success
- 3.0 Satisfaction Rating


Statewide License Issuance






Public Comment

- 281 Public Comments Received to Date
- Common Comments
 - Reduce deer harvest/license numbers
 - Implement more predator control measures; including more hunter harvest
 - Antler restrictions – both for and against
 - Increase doe harvest (too many does and too few bucks)
 - Provide more mobility impaired and youth hunt opportunities
 - Archery season hunt dates



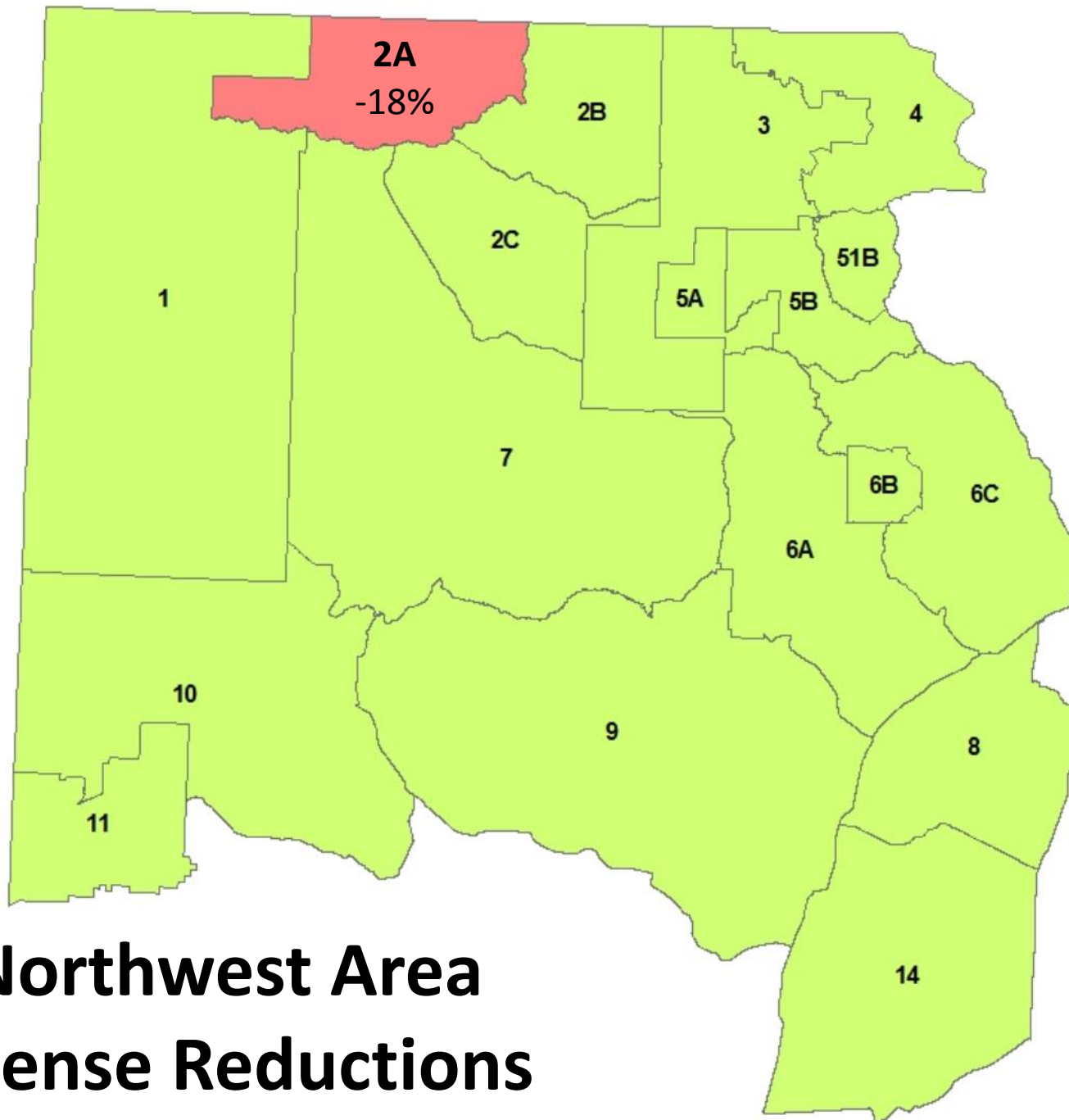
**Proposed
Amendments:
Deer
19.31.13 NMAC**

- Allow archery license holders to select from either a September 1-24 or January 1-15 season.
- Average Success Rates over 5 Years
 - 18.9% for September 1-22/24
 - 18.5% for September or January
 - 23.7% for January 1-15

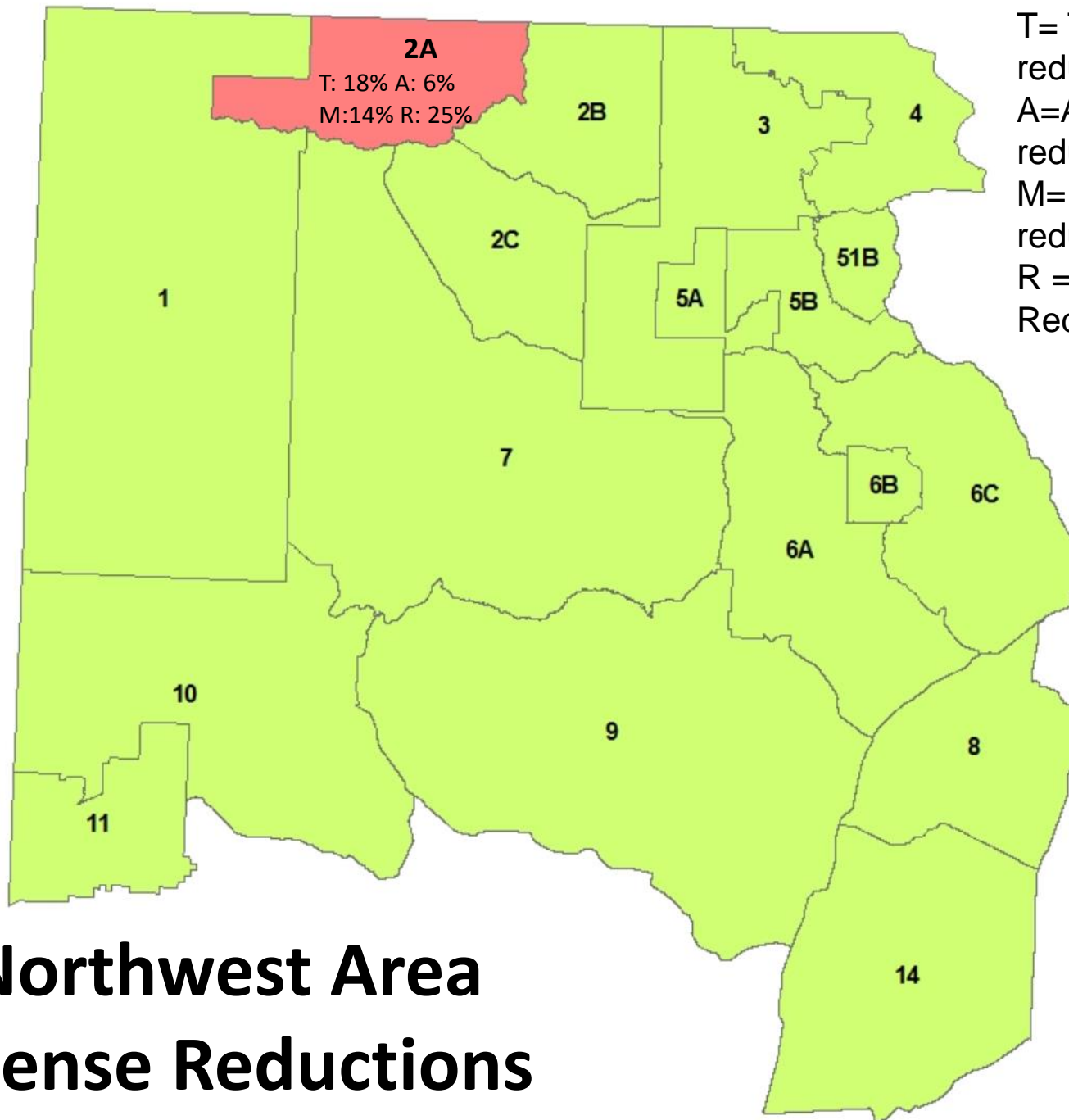


**Proposed Amendments:
Deer 19.31.13 NMAC
Statewide**

- Extend youth hunts held over the Thanksgiving holiday from 4 to 5 days



Northwest Area License Reductions

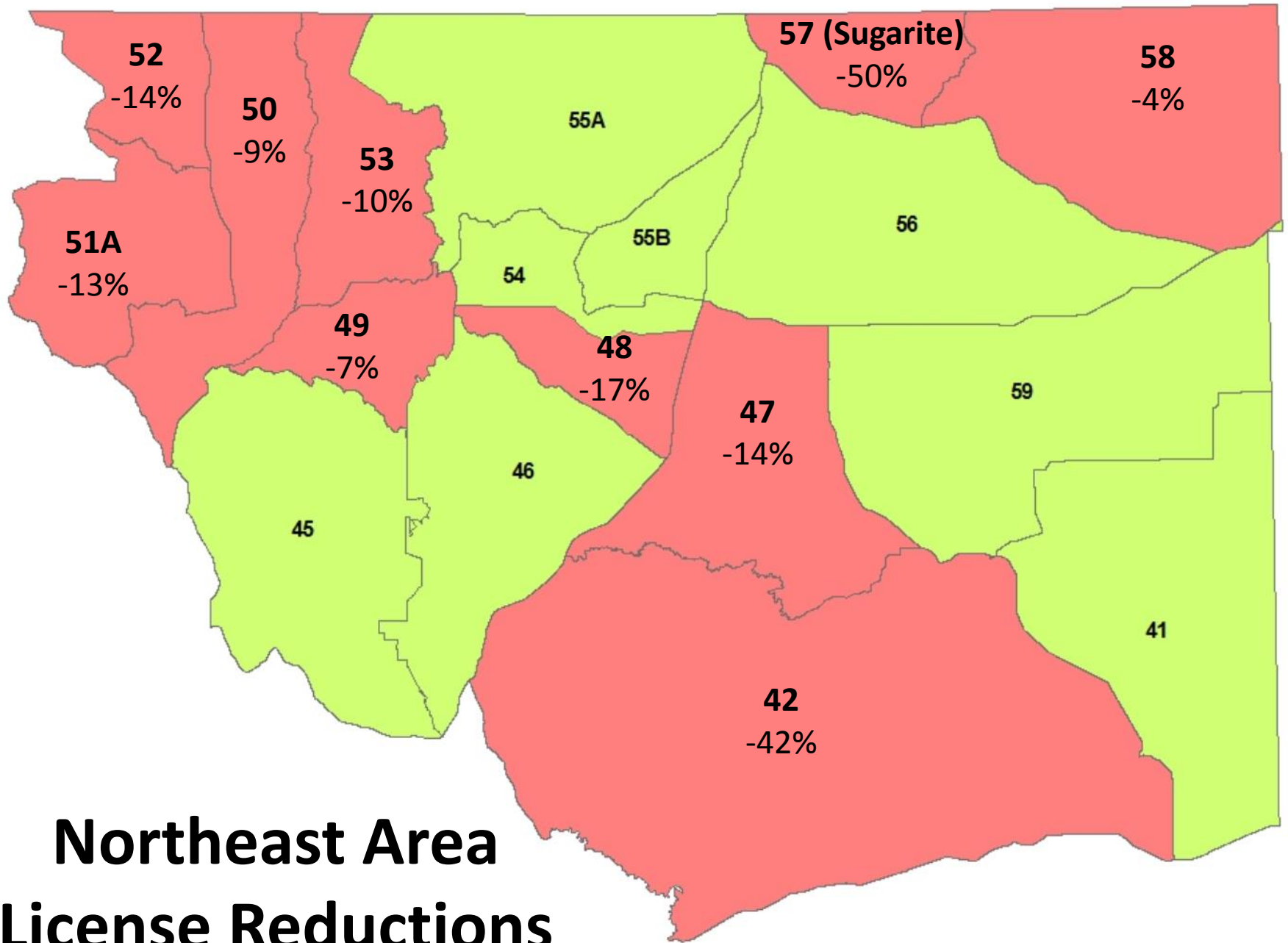


T= Total license reductions
A=Archery reductions
M= Muzzleloader reductions
R = Rifle Reductions

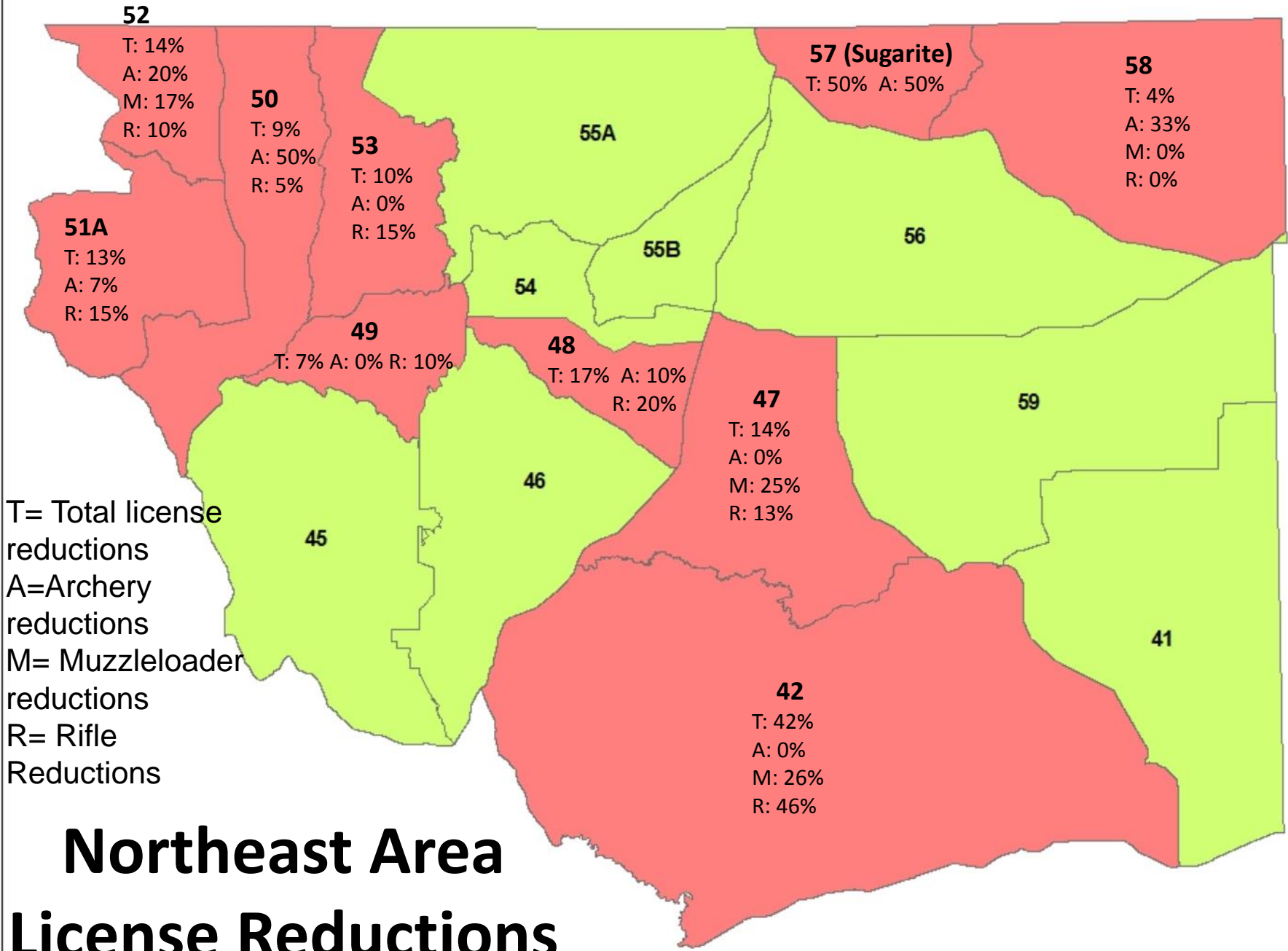
Northwest Area License Reductions

Northwest Area

- Add a private land archery hunt in GMU 8.



Northeast Area License Reductions



T= Total license reductions
A= Archery reductions
M= Muzzleloader reductions
R= Rifle Reductions

Northeast Area License Reductions



Northeast Area

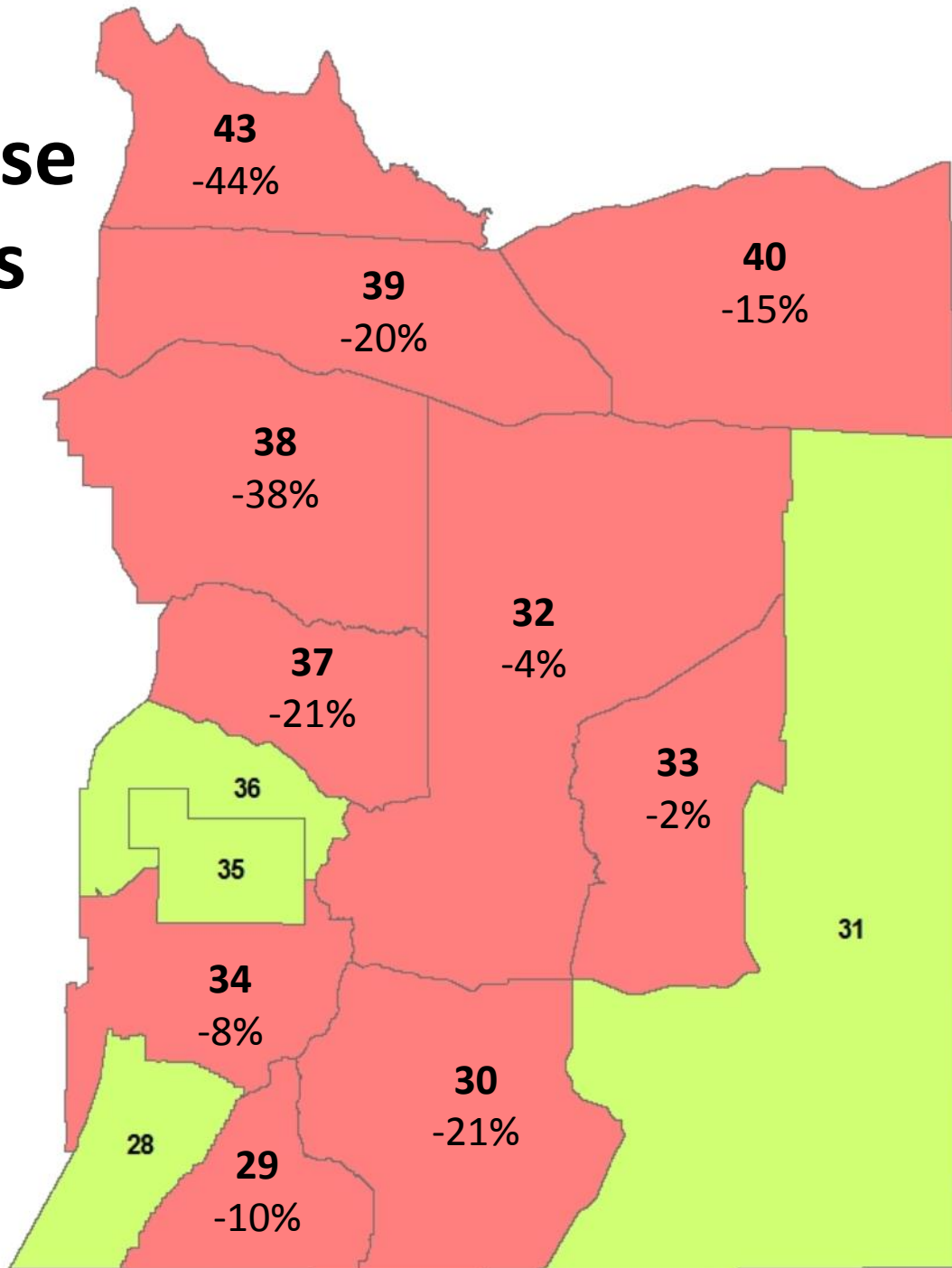
- In an attempt to increase hunter success and reduce overlap with elk hunts
 - GMU 43: Shift muzzleloader hunt dates to late October
 - GMU 45: Remove 2nd Muzzleloader hunt and add licenses to 1st due to overlap with muzzleloader elk hunt
 - GMU 51: Combine the 1st and 2nd rifle hunts
- Create a new Muzzleloader hunt in GMU 48 of 20 Licenses

The seal of the Michigan Department of Natural Resources is visible in the background. It features a central image of a bear's head, surrounded by the text "MICHIGAN DEPARTMENT OF NATURAL RESOURCES" and "GAMES & FISH".

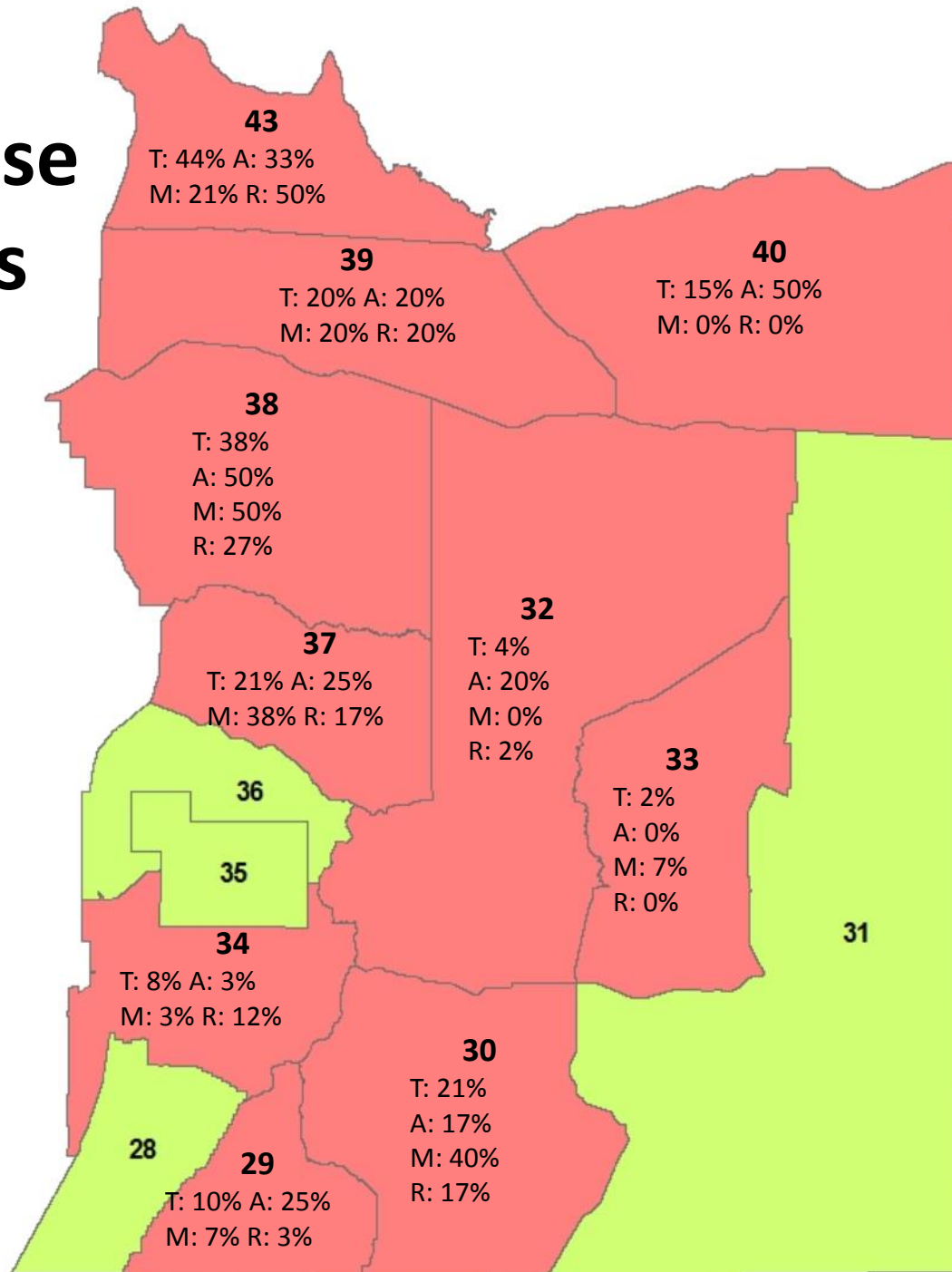
Northeast Area

- Create GMU 54 and GMU 55 YO Private Land deer hunts over the Thanksgiving holiday.

Southeast Area License Reductions



Southeast Area License Reductions



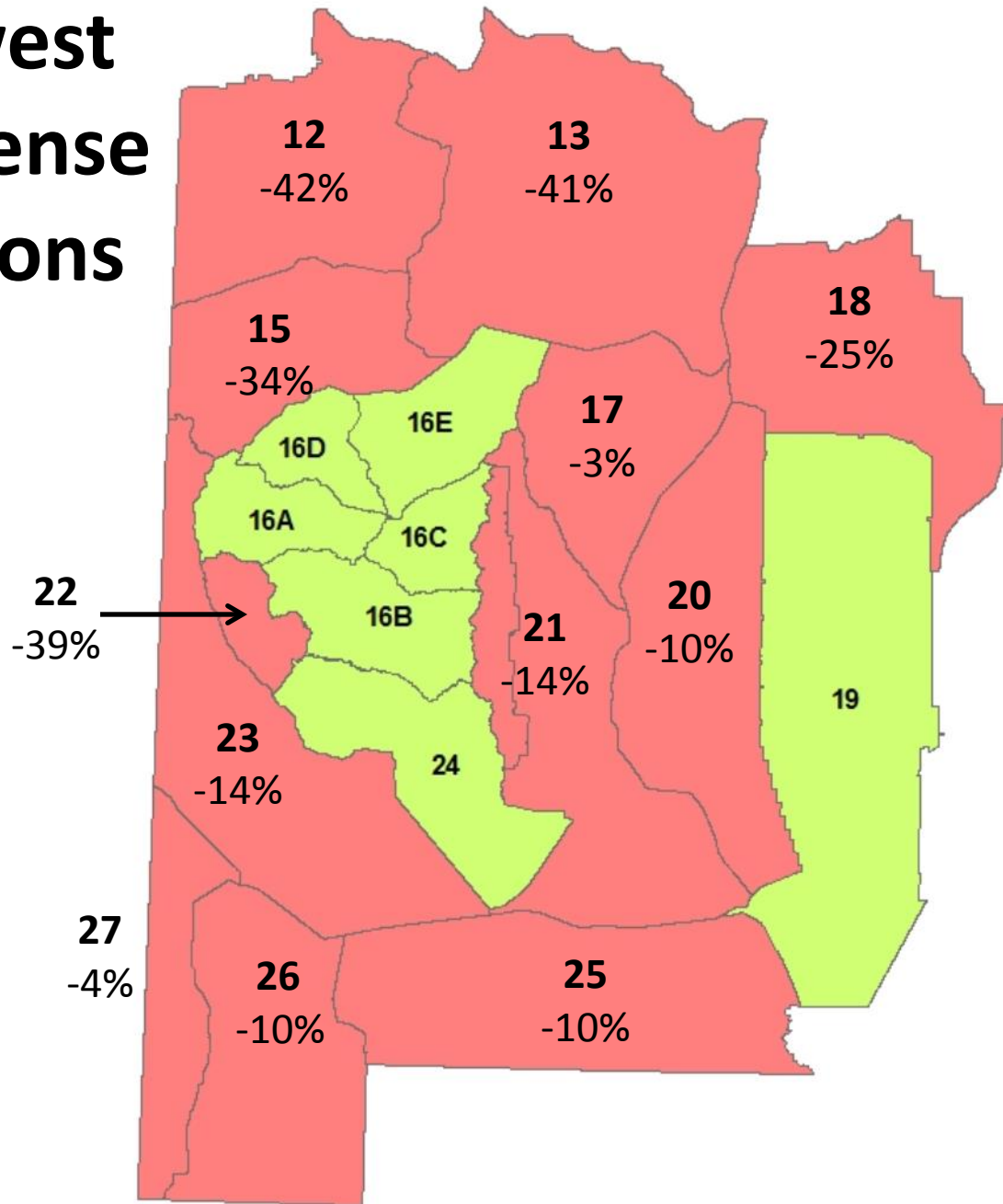
T= Total license reductions
A=Archery reductions
M= Muzzleloader reductions
R= Rifle Reductions

The logo for Gamma Upsilon Psi is a circular emblem featuring a bear's head in the center. The text "GAMMA Upsilon PSI" is written around the perimeter of the circle.

Southeast Area

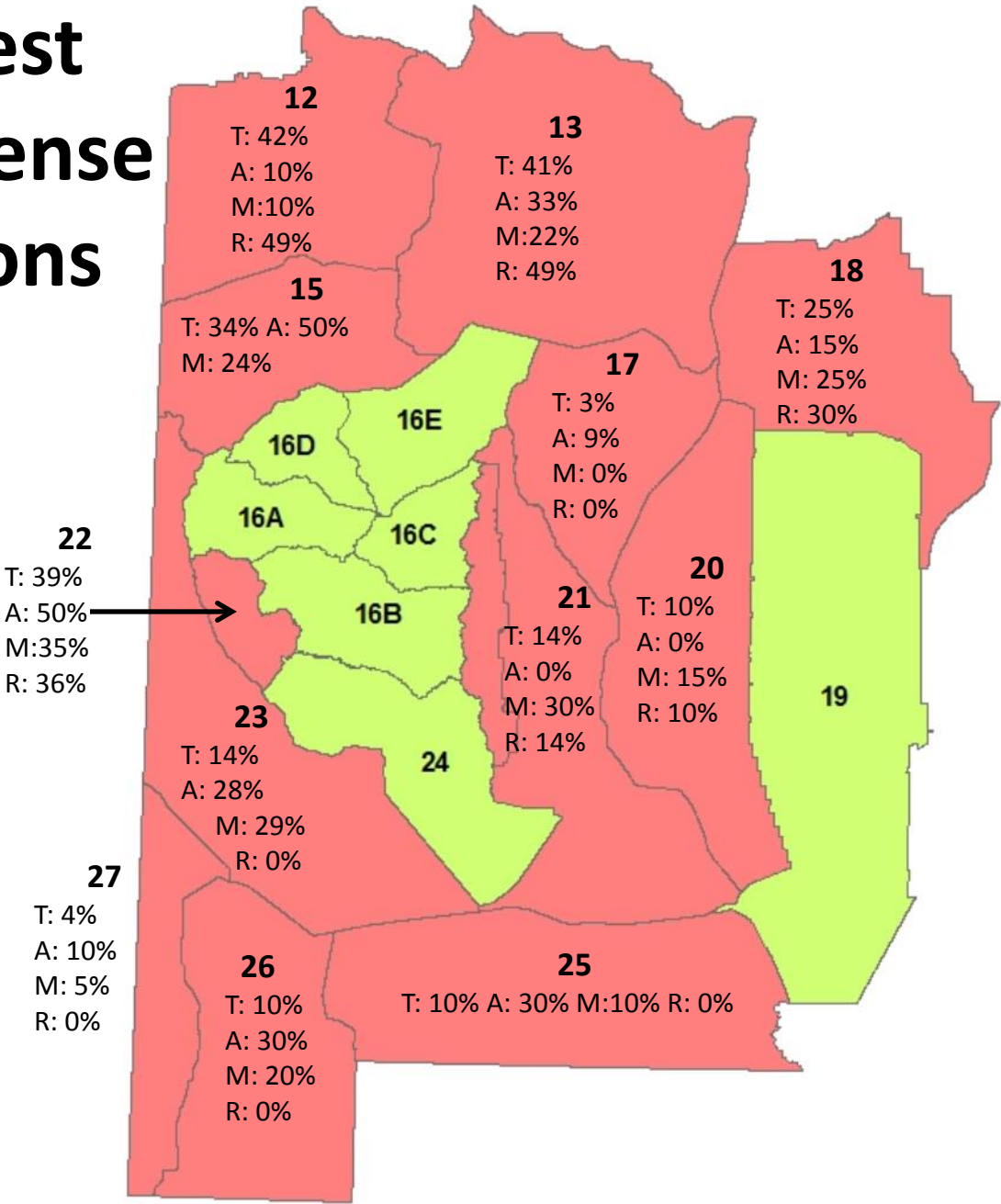
- Add specific wording to the deer rule noting that deer hunting is allowed on the prairie chicken conservation areas
- Have start date of GMU 29 1st rifle the same as GMU 28 1st rifle
- Change the bag limit of the 1st Brantley, Seven rivers and Huey (YO) hunt from antlerless deer to either sex

Southwest Area License Reductions



Southwest Area License Reductions

T= Total license reductions
 A=Archery reductions
 M= Muzzleloader reductions
 R= Rifle Reductions





Deer License Reductions

- Reduce deer license numbers by 11.5% statewide (approximately 4,100 licenses)
- Purpose
 - Increase hunter satisfaction ratings
 - Increase hunter success



Questions?

Antler Point Restrictions (APR's)



Perceived Benefits

- More mature bucks in population (all hunting pressure is focused this segment of population, resulting in younger age structure)
- Improves population productivity (may be true when Buck:Doe ratios fall below 10:100)
- More bucks in population (may occur if Buck:Doe very low [10:100] but no evidence of increase in adult bucks)

<http://www.muledeerworkinggroup.com/Docs/MDWG%20Fact%206.pdf>

Antler Restrictions and New Mexico

- Hunter success 5% lower during restrictions
However, harvest was only focused on the older age class deer (>3.5 years old)
- B:D Ratio did not differ during restrictions or after restrictions

<http://www.muledeerworkinggroup.com/Docs/MDWG%20Fact%206.pdf>

Antler Restrictions

- Focus all hunting pressure on oldest age class, lowering average age of bucks in the population.
- Protects smaller antlered bucks (including those that will never become trophy animals)
- Most western states have discontinued the use of APR.

<http://www.muledeerworkinggroup.com/Docs/MDWG%20Fact%206.pdf>

Population Status New Mexico

- Statewide Population Data (5 Year Averages)
 - 32 Bucks:100 Doe
 - 30% Yearling Bucks in the Population
 - 50 Fawns:100 Doe
- Given the current data and experiences from past antler restrictions, it is unlikely that implementing new antler restrictions will greatly influence mule deer population dynamics, including trophy potential.

<http://www.muledeerworkinggroup.com/Docs/MDWG%20Fact%206.pdf>

Detailed Harvest Data 2013-2014

Statewide Public Draw License Totals

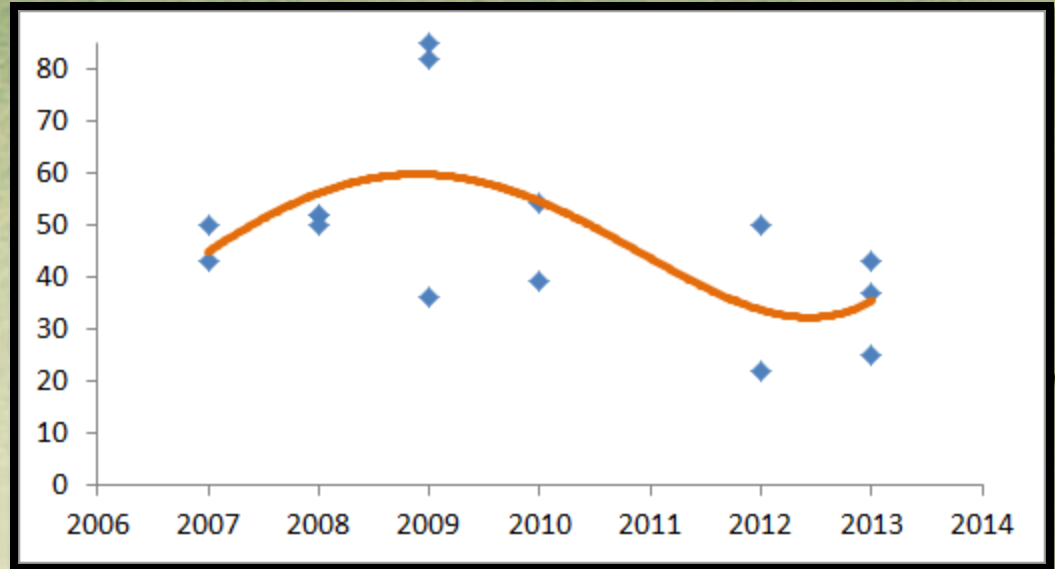
Hunt Code	GMU(s)	Weapon	Licenses	# Hunters	Percent	Success	Estimated Harvest		Satisfaction	Days
			Sold	Reporting	Reporting	Rate	Bucks	Does	Rating	Hunted
All	Statewide	Archery	6874	6329	92%	21%	1173	30	3.2	6.7
All	Statewide	Muzzleloader	5431	5015	92%	19%	889	8	2.9	3.6
All	Statewide	Rifle	19934	17625	88%	23%	4023	36	2.9	3.5
Grand Total		All	32239	28969	90%	22%	6085	74	3.0	4.2

Statewide Private Land License Totals

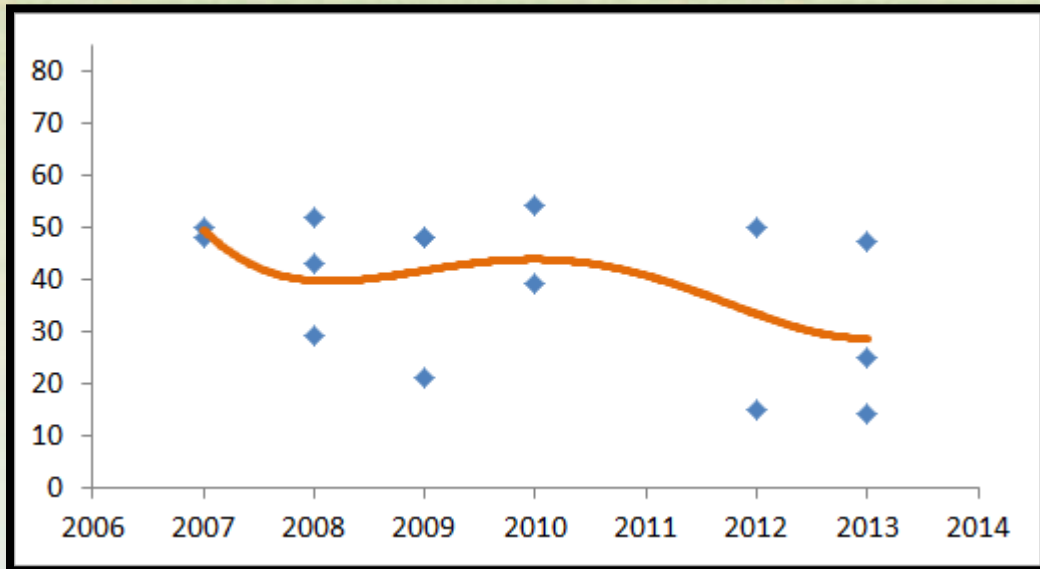
Hunt Code	GMU(s)	Weapon	Licenses	# Hunters	Percent	Success	Estimated Harvest		Satisfaction	Days
			Sold	Reporting	Reporting	Rate	Bucks	Does	Rating	Hunted
All	Statewide	Archery	755	574	76%	36%	234	12	3.5	5.7
All	Statewide	Muzzleloader	232	192	83%	47%	103	0	3.5	3.4
All	Statewide	Rifle	3868	2847	74%	45%	1605	29	3.4	3.3
<i>OTC (Non Reporting) - Estimate</i>			<i>1207</i>	<i>0</i>	<i>0%</i>	<i>44%</i>	<i>483</i>	<i>10</i>	<i>3.5</i>	<i>3.7</i>
Grand Total		All	6062	3613	60%	44%	2424	50	3.5	3.7



Statewide Trend Bucks:100 Does



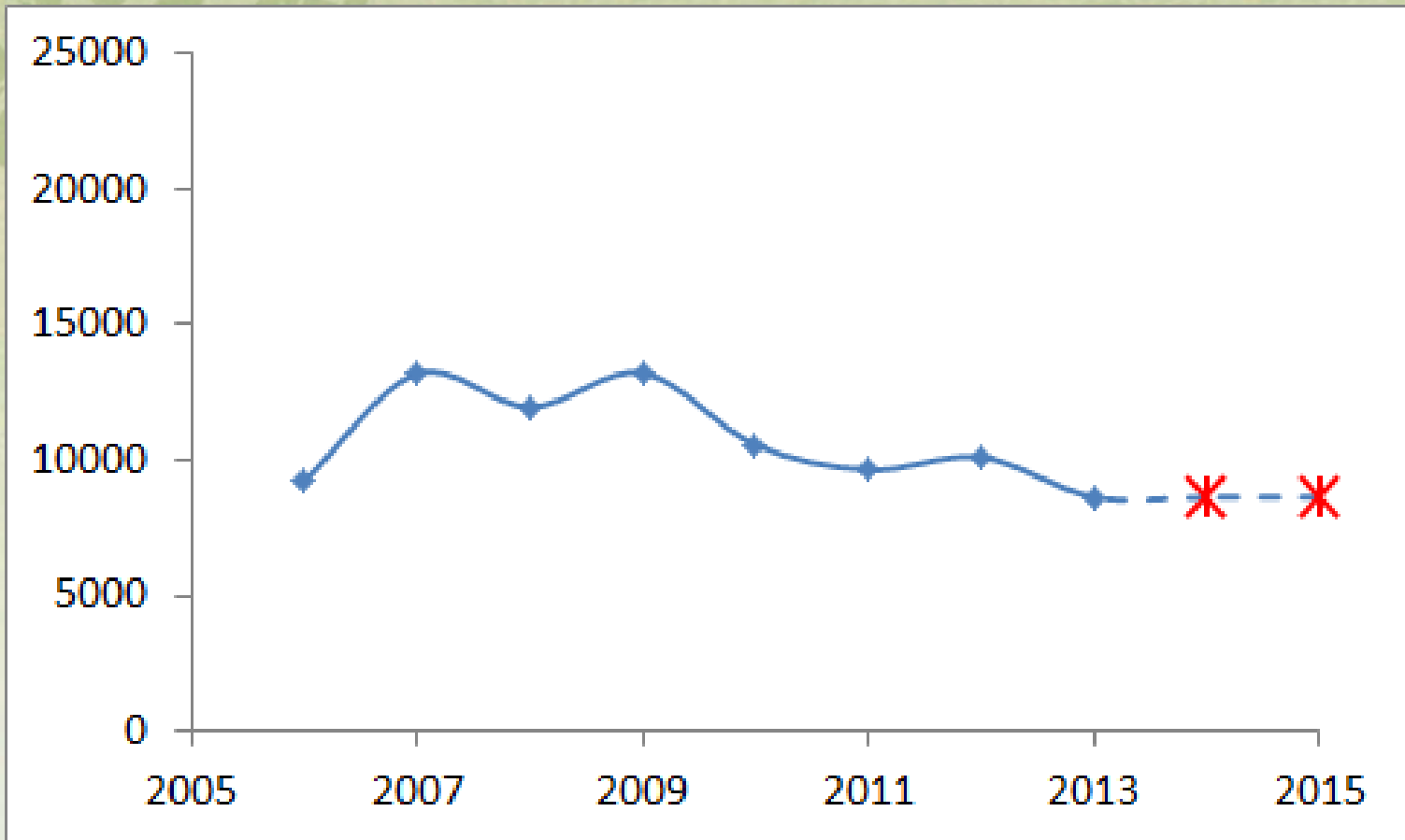
Statewide Trend Fawns:100 Does



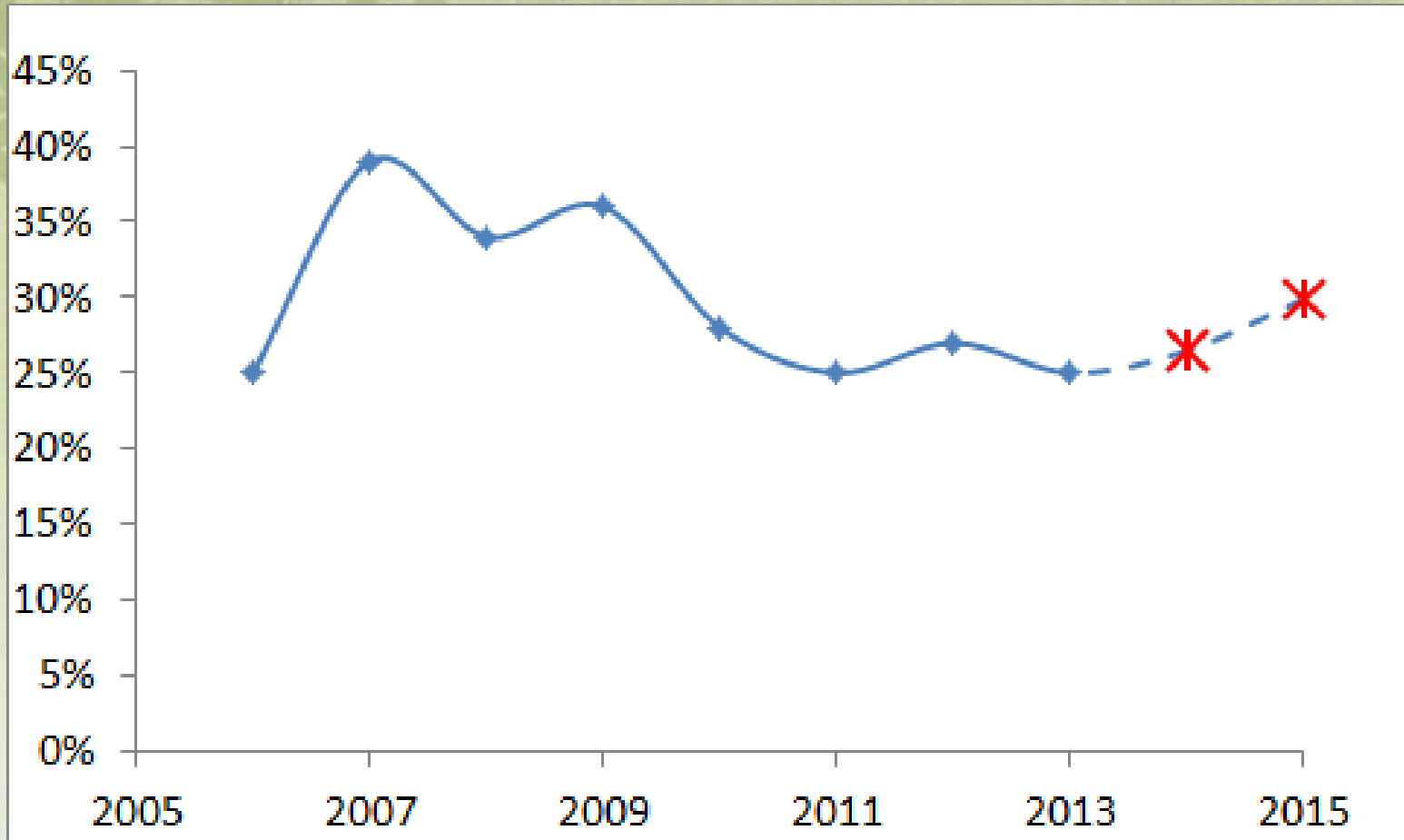
Coues White-tailed Deer



Statewide Harvest



Hunter Success Rate



Statewide Hunter Satisfaction Rating

