



**Rosa Property Exchange  
with the  
Bureau of Land  
Management**

**October 2, 2014**

**New Mexico State Game Commission Meeting**

**Socorro, NM**

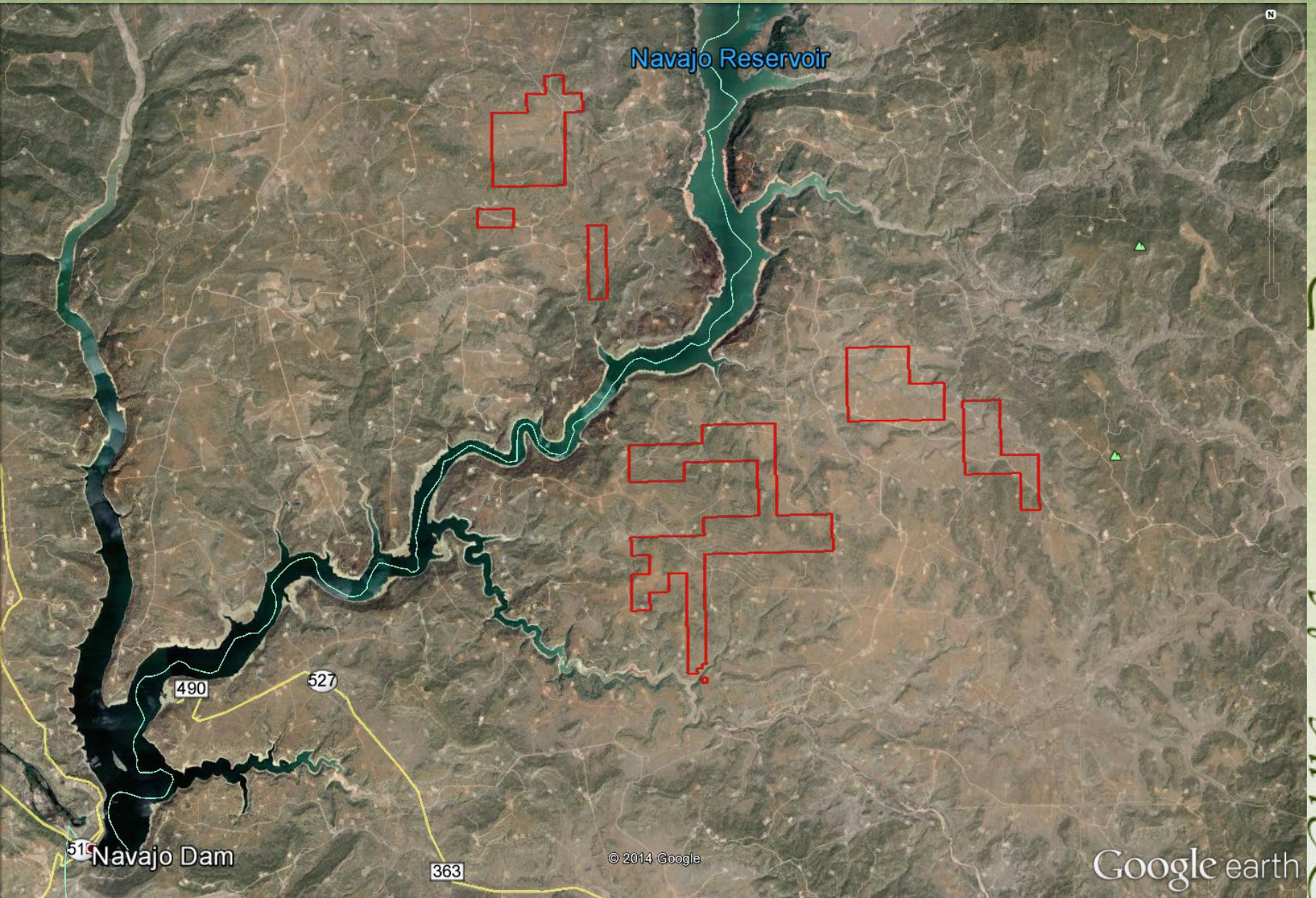


# Rosa Properties

- The Rosa allotments, 4104 acres
- Acquired by the Department in 1960's
- The Rosa Allotment areas are fragmented parcels populated by native pasture and desert scrub savanna with Piñon/Juniper woodland



# Rosa Properties



51 Navajo Dam

Navajo Reservoir

490

527

363

© 2014 Google

Google earth

Imagery Date: 5/2/2013 36°52'27.05" N 107°28'15.19" W elev 6500 ft eye alt 16.66 mi

Wildlife Management Division



# Jackson Lake and Rosa Properties



*Wildlife Management Division*

© 2014 Google

Google earth

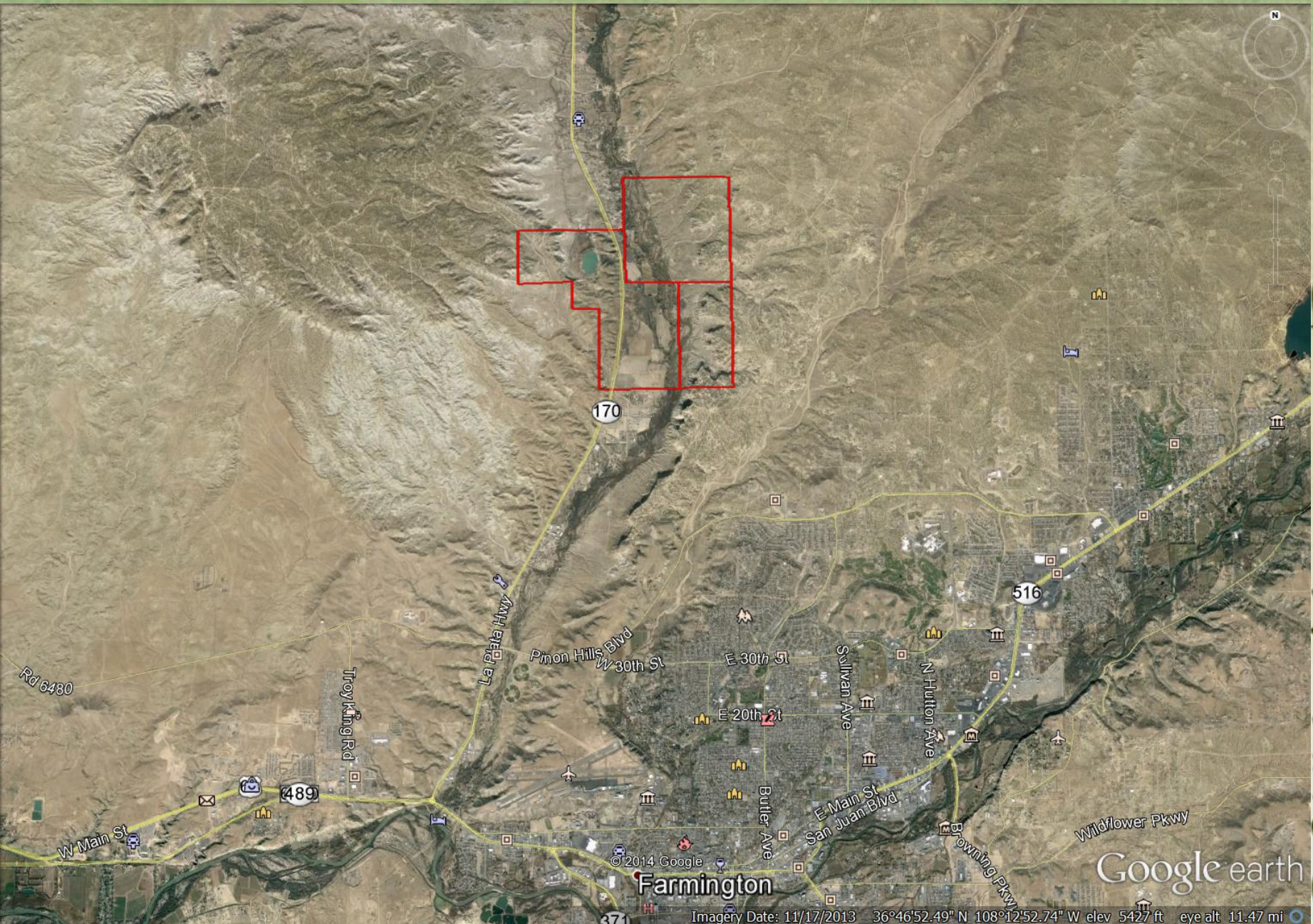
Imagery Date: 11/17/2013 36°49'20.92" N 107°47'25.76" W elev 6236 ft eye alt 54.03 mi



# Jackson Lake WMA

- Jackson Lake was constructed originally in the late nineteenth century for irrigation
- Five ponds are located on the Jackson WMA .
- Traditional crops and grains were farmed on the area until 1938.
- Pasture being utilized on the upper bench next to NM170.
- Acquired by the State Game Commission in the early 1940's





© 2014 Google

Farmington

Google earth

Imagery Date: 11/17/2013 36°46'52.49" N 108°12'52.74" W elev 5427 ft eye alt 11.47 mi

*Wildlife Management Division*

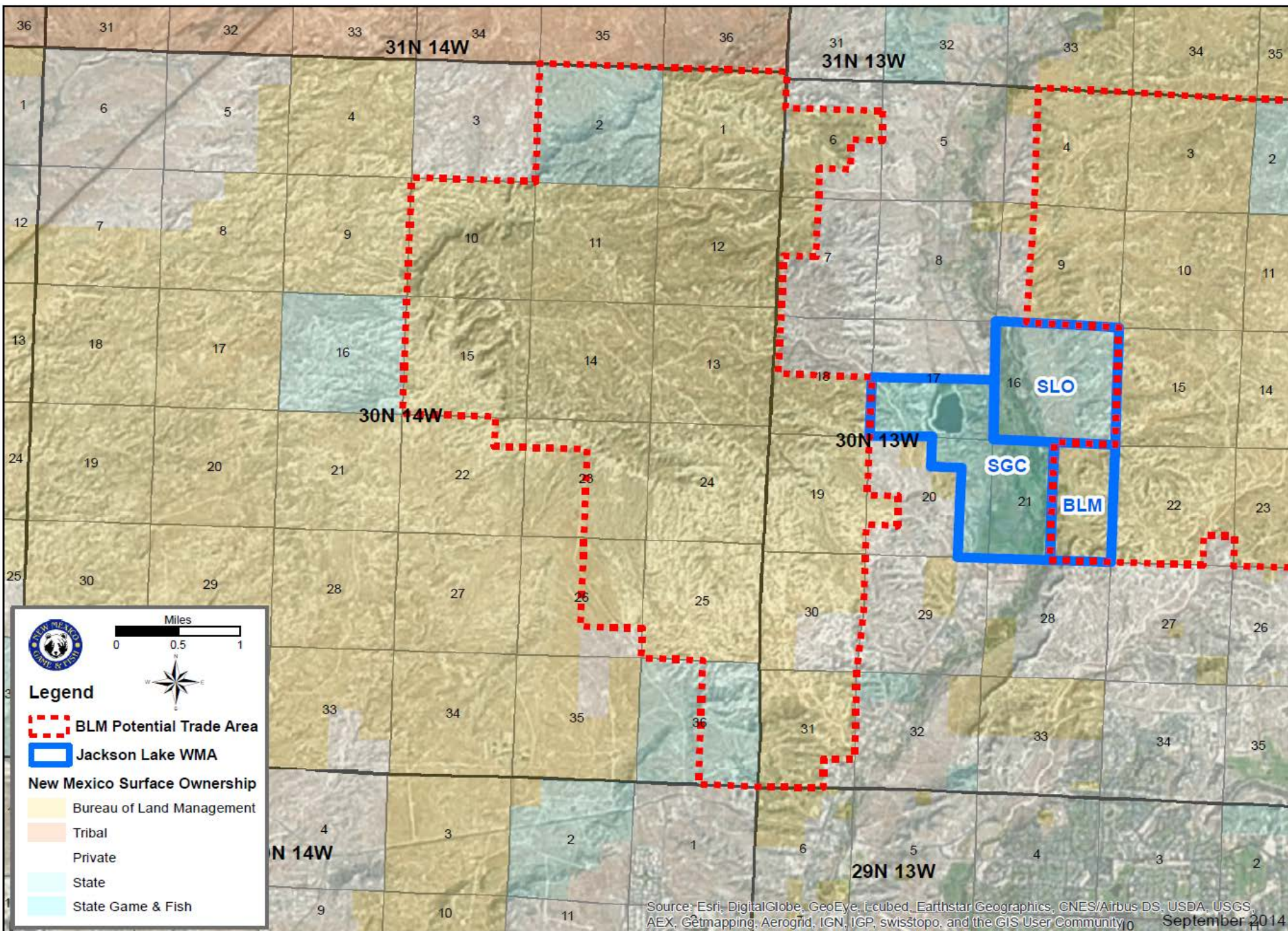






## **Bureau of Land Management Lands of Interest (Piñon Mesa)**

- Contiguous with Jackson Lake WMA
- Increases the size of Jackson Lake WMA and provides for improved mule deer habitat
- Allows for the Department to regulate activities that impact wildlife and wildlife habitat
- Trade will transfer to the State Game Commission approximately 13,010 acres, which includes the 320 acres in the Jackson Lake MOU we currently manage.












 Miles  
 0 0.5 1



**Legend**

-  BLM Potential Trade Area
-  Jackson Lake WMA

**New Mexico Surface Ownership**

-  Bureau of Land Management
-  Tribal
-  Private
-  State
-  State Game & Fish





## Benefits of the Land Exchange

- Rosa Allotments are fragmented and intermixed with other Jurisdictions and all mineral rights are Federal.
- Rosa Allotments are highly impacted by Natural Gas extraction and exploration.
- Rosa Allotments are impacted by wild horse overgrazing.
- Jackson Lake WMA is subject to urban encroachment.
- Jackson Lake WMA adjacent to BLM open space properties has a spill over of public use on a restricted use Wildlife area.
- Jackson Lake offers a range of wildlife habitat, access to water and forage. However is limited by its small size.





**Questions?**



# Solutions

The Department proposes an exchange of the Rosa Allotment parcels for BLM held properties in the Piñon Mesa area adjacent to Jackson Lake.

**The Department is interested in the following BLM held parcels:**

T30North, R13West: Sections (or portions thereof) 6, 7, 18, 19, 20, 21, 30, 31 and

T30North, R14West: Sections (or portions thereof) 1, 10, 11, 12, 13, 14, 15, 22, 23, 24, 25, 26.

- A potential trade of the entire Rosa Allotments parcels for BLM property adjacent to Jackson WMA western boundaries known as the Piñon Mesa Area and adjacent a half section on the eastern boundaries of BLM land in the Glade area. Will be based on equivalent values of Commission and Bureau owned properties.
- A trade would help preserve a habitat threatened by urban encroachment and increased motorized traffic at Jackson Lake WMA.
- A trade would free the BLM management of the development the Natural Gas industry without jurisdictional issues.



# Jackson Lake Refuge - Pinon Mesa

