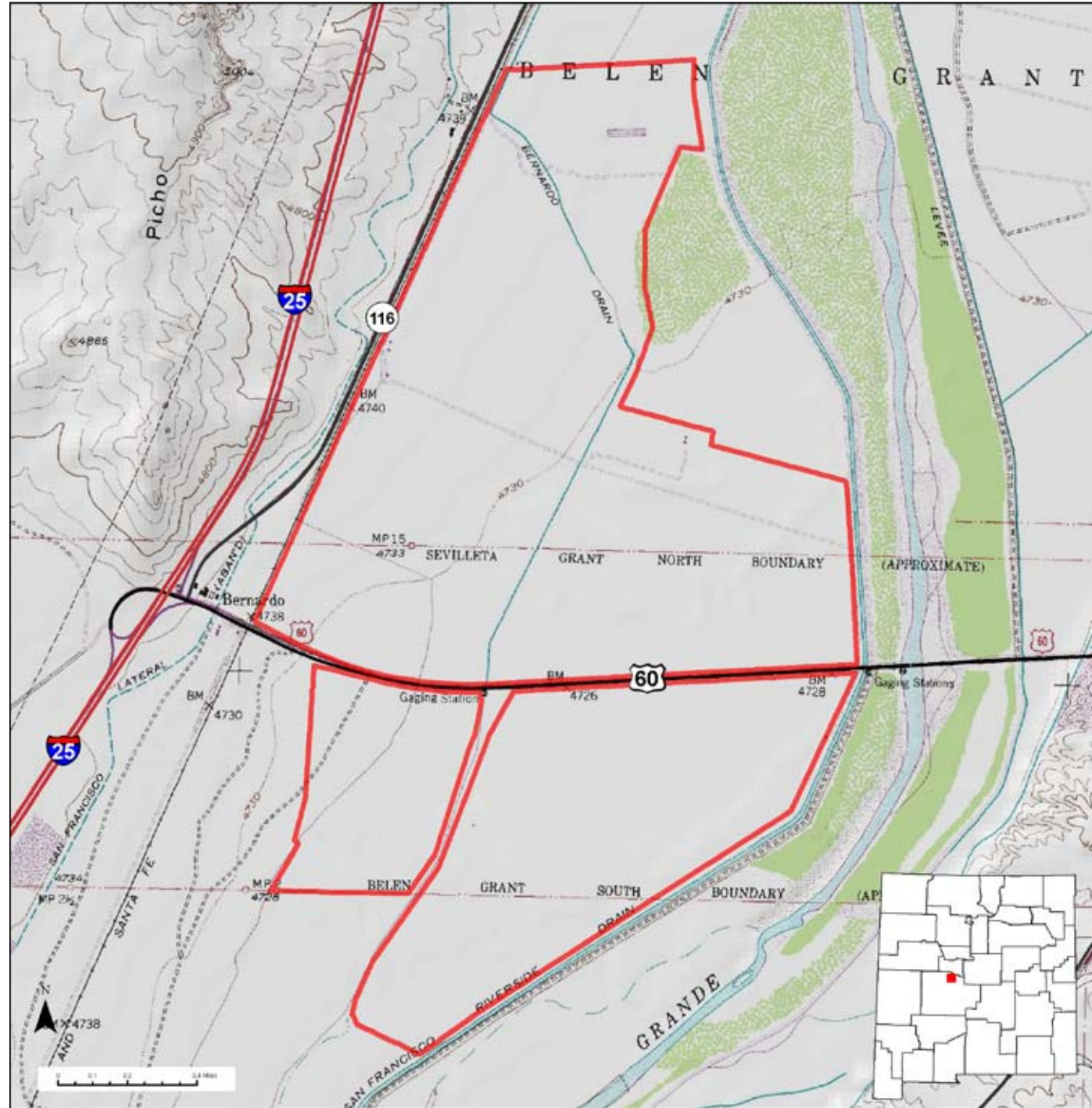




Bernardo Wildlife Area



Location: Part of the Ladd S. Gordon Waterfowl Complex, Bernardo Wildlife Area is located between Belen and Socorro between I-25 and the Rio Grande.

Total Acreage: 1,675 acres.

Purchase: Bernardo Wildlife Area was purchased in 1971 to provide habitat and food for wintering waterfowl.

Description: The area contains mostly flat croplands. In the late fall and winter, fields are flooded for waterfowl to roost in.

For More information: More information about hunting, fishing and other activities, may be found on the Department's website: www.wildlife.state.nm.us/.

GAIN Activities

- ✓ Wildlife Viewing
- ✓ Photography

Access

- ✓ Auto tour route

Hunting and Fishing

- ✓ Hunting
- ✓ Fishing

Closures

- ✓ Yes

Facilities

- ✓ Rest rooms
- ✓ No camping
- ✓ No drinking water

Fees

- ✓ No

Motorized Vehicles

Allowed on:

- ✓ Auto tour route.
- ✓ Designated Parking Areas

For more information on hunting and fishing rules and seasons, please read current hunting or fishing Rules and Information Booklets available on the Department's website, at Department offices, or from license vendors state-wide.

What to See, Do, and Learn

Wildlife Viewing/Photography/Hiking-Wildlife watchers may see various waterfowl, sandhill cranes, elk, raptors, and songbirds. Good binoculars are important. The best time to view wildlife is at dawn or dusk. To protect wildlife and public safety, wildlife viewing/photography/hiking is restricted to the Auto Tour Route, parking areas, and viewing platforms.

Fishing-Fishing is allowed March 15-September 9 along irrigation canals when filled with water.

Hunting-Waterfowl hunting is allowed during open seasons; hunting is restricted to areas designated in the New Mexico Hunting Migratory Game Bird Supplement Booklet.

Horseback Riding-Not allowed.

Camping-Not allowed.

Motorized Vehicles-Allowed on auto tour route and in designated parking areas only.

Facilities-Bernardo Wildlife Area has restrooms but not drinking water.

Fees-Hunters and anglers must have appropriate licenses and permits. Wildlife viewers and photographers do not need a license or validation.

Access Dates and Hours:

Vehicle Access:

- ✓ November 10-February 28 - 1/2 Hour Before Sunrise to 1/2 Hour After Sunset; Daily.
- ✓ March 1-November 9 - 7:00 am to 1/2 Hour After Sunset; Monday-Friday.

Walk-In Access:

- ✓ 1/2 Hour Before Sunrise to 1/2 Hour After Sunset; Daily

Hunter Access:

- ✓ As published annually in the New Mexico Hunting Migratory Game Bird Supplement Booklet.