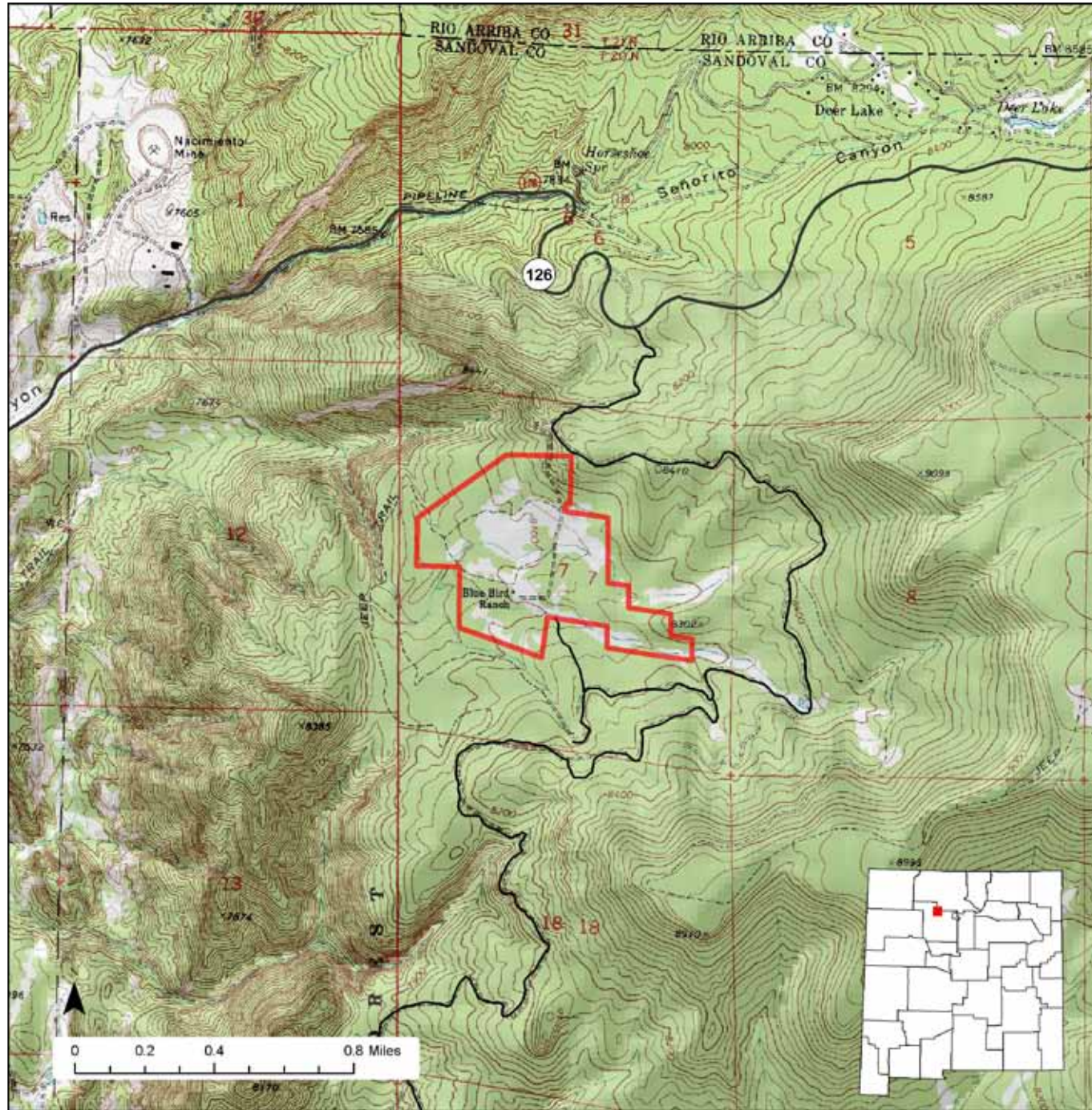




Bluebird Mesa Wildlife Area



Location: Bluebird Mesa Wildlife Area is located in the Jemez Mountains northwest of Albuquerque.

Total Acreage: 160 acres.

Purchase: Bluebird Mesa was purchased in 1953.

Description: The property is located on the west side of the Jemez Mountains. The vegetation contains a mixture of pinon, juniper, ponderosa pine, and mixed grasses and forbs.

For More information: More information about hunting, fishing and other activities, may be found on the Department's website: www.wildlife.state.nm.us/.

GAIN Activities	What to See, Do, and Learn
<ul style="list-style-type: none"> ✓ Wildlife Viewing ✓ Photographing 	<p>Wildlife Viewing-Wildlife watchers may see deer, elk, turkey, and other wildlife. Good binoculars are important. The best time to view wildlife is at dawn or dusk.</p>
Access	
<ul style="list-style-type: none"> ✓ Hiking ✓ Horseback Riding 	<p>Photographing-The best time to photograph wildlife is at dawn or dusk. A telephoto lens may be important.</p> <p>Hiking-Hiking is the best way to see wildlife at the Bluebird Mesa Wildlife Area or other wildlife management areas.</p>
Hunting and Fishing	
<ul style="list-style-type: none"> ✓ Hunting ✓ No fishing opportunities 	<p>Bicycling-Not allowed.</p> <p>Horseback Riding-Horseback riding is allowed year-round.</p> <p>Camping-Not allowed.</p> <p>Hunting-See Hunting Rules and Info for hunt opportunities.</p>
Closures	
<ul style="list-style-type: none"> ✓ Yes 	<p>Fishing-No fishing opportunities.</p>
Facilities	
<ul style="list-style-type: none"> ✓ No rest rooms ✓ No camp sites ✓ No drinking water 	<p>Closures-Bluebird Mesa Wildlife Area is open year-round but is subject to U.S. Forest Service winter road closure.</p> <p>Facilities-Bluebird Mesa Wildlife Area does not have rest rooms, camp sites or drinking water.</p>
Fees	
<ul style="list-style-type: none"> ✓ Yes 	<p>Fees-Wildlife viewers, photographers, hikers, and horseback riders must have a valid license or permit. See the Department's website www.wildlife.state.nm.us for more information..</p>
Motorized Vehicles	
<ul style="list-style-type: none"> ✓ Not allowed beyond the roadway 	<p>Motorized Vehicles-Not allowed beyond the roadway.</p>
<p>For more information on hunting and fishing rules and seasons, please read current hunting or fishing Rules and Information Booklets available on the Department's website, at Department offices, or from license vendors state-wide.</p>	