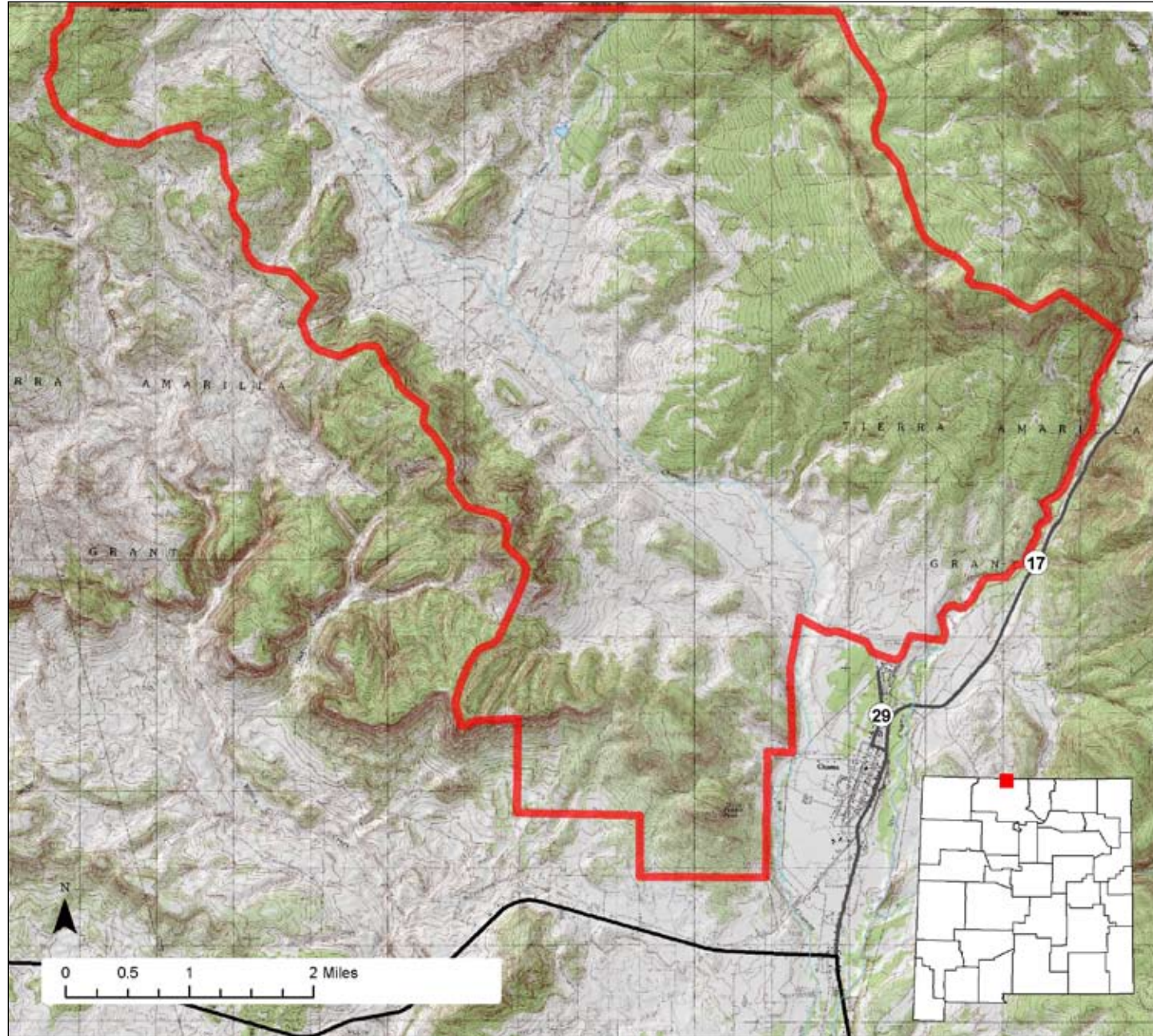




Edward Sargent Wildlife Area



Location: The Sargent Wildlife Area can be found north of Chama in Rio Arriba County. The parking area is located at the north end of Pine Street, in the northwest corner of the village.

Total Acreage: 20,209 acres.

Purchase: The Sargent was purchased in 1975 with funding from The Nature Conservancy and the Federal Sportfish and Wildlife Restoration Act.

Description: The property provides habitat for elk and other wildlife species. It is one of the largest properties owned by the Department. Its northern boundary extends to the Colorado state line. The Sargent property consists of high aspen meadows, alder-lined streams, oak groves, and grassy meadows.

For More information: Regarding hunting, fishing and other activities, please see the appropriate Department publications and/or the Department's website: www.wildlife.state.nm.us/.

GAIN Activities/Access	What to See, Do, and Learn
<ul style="list-style-type: none"> ✓ Wildlife Viewing ✓ Photographing ✓ Hiking ✓ Bicycling ✓ Skiing/Snowshoeing ✓ Horseback Riding ✓ Camping 	<p>Closures: -From May 15-June 30: GAIN activities (wildlife viewing, photography, hiking, bicycling, horseback riding, skiing, snowshoeing, etc) are restricted to the Sargent Main Road, Parking Area, Designated Camping Area, and The Elk Viewing Trail.</p> <p>-During published deer and elk hunts: GAIN activities are restricted to the Parking Area, Designated Camping Area, and the Elk Viewing Trail; the Sargent Main Road is closed to GAIN activities during this time.</p> <p>Camping-Camping is allowed only in the Designated Camping Area and only from July 1-Nov. 15. Licensed hunters and their guests may camp in this designated area during their hunt.</p> <p>Wildlife Viewing-Wildlife watchers may see elk, deer, and other wildlife. Good binoculars are important. The best time to view wildlife is at dawn or dusk.</p>
Hunting and Fishing	
<ul style="list-style-type: none"> ✓ Hunting ✓ Fishing 	<p>Elk Viewing Trail-Since the Sargent is home to one of the state's largest elk herds, there is an interpretive exhibit on the life history of elk near the parking area.</p> <p>Photographing-The Sargent WMA is quite photogenic, with mountain, streams and forests.</p>
Closures	
<ul style="list-style-type: none"> ✓ Yes 	<p>Hiking-Hiking is the best way to see wildlife at the Sargent.</p>
Facilities	
<ul style="list-style-type: none"> ✓ Rest rooms ✓ Primitive camping ✓ Interpretive exhibit ✓ No drinking water 	<p>Bicycling-Bicycles can be helpful in accessing some of the upper reaches of the Sargent, trout streams and Nabor Lake. Bicycles must remain on established roads.</p> <p>Horseback Riding-Horseback riding is a good way to see wildlife and can be an important tool when hunting big game.</p> <p>Skiing/Snowshoeing-These are wonderful ways to see winter wildlife on the Sargent.</p> <p>Hunting-See NM Hunting Rules & Information for details.</p>
Fees	
<ul style="list-style-type: none"> ✓ Yes 	<p>Fishing-Angler access is restricted to the Angler Access Trail and an area within 200 feet of the Rio Chama during the May 15-June 30 elk calving closure and during published deer and elk hunts. Anglers may access the entire WMA, including Nabor Lake, outside of these restricted periods.</p>
Motorized Vehicles	
<ul style="list-style-type: none"> ✓ Not allowed beyond the parking area 	<p>Facilities-The Sargent has rest rooms, primitive camping, and interpretive exhibits.</p>
<p>For more information on hunting and fishing rules and seasons, please read current hunting or fishing Rules and Information Booklets available on the Department's website, at Department offices, or from license vendors state-wide.</p>	<p>Fees-Hunters and fishermen must have appropriate licenses and permits. Wildlife viewers, photographers, hikers, bicyclists, horseback riders, and skiers must have a valid license or permit. See the Department's website www.wildlife.state.nm.us for more information.</p> <p>Motorized Vehicles-Not allowed beyond the parking area.</p>