

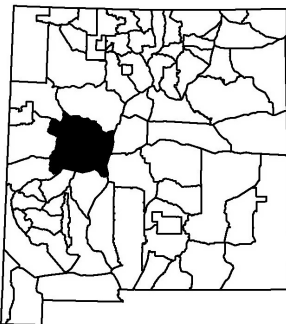
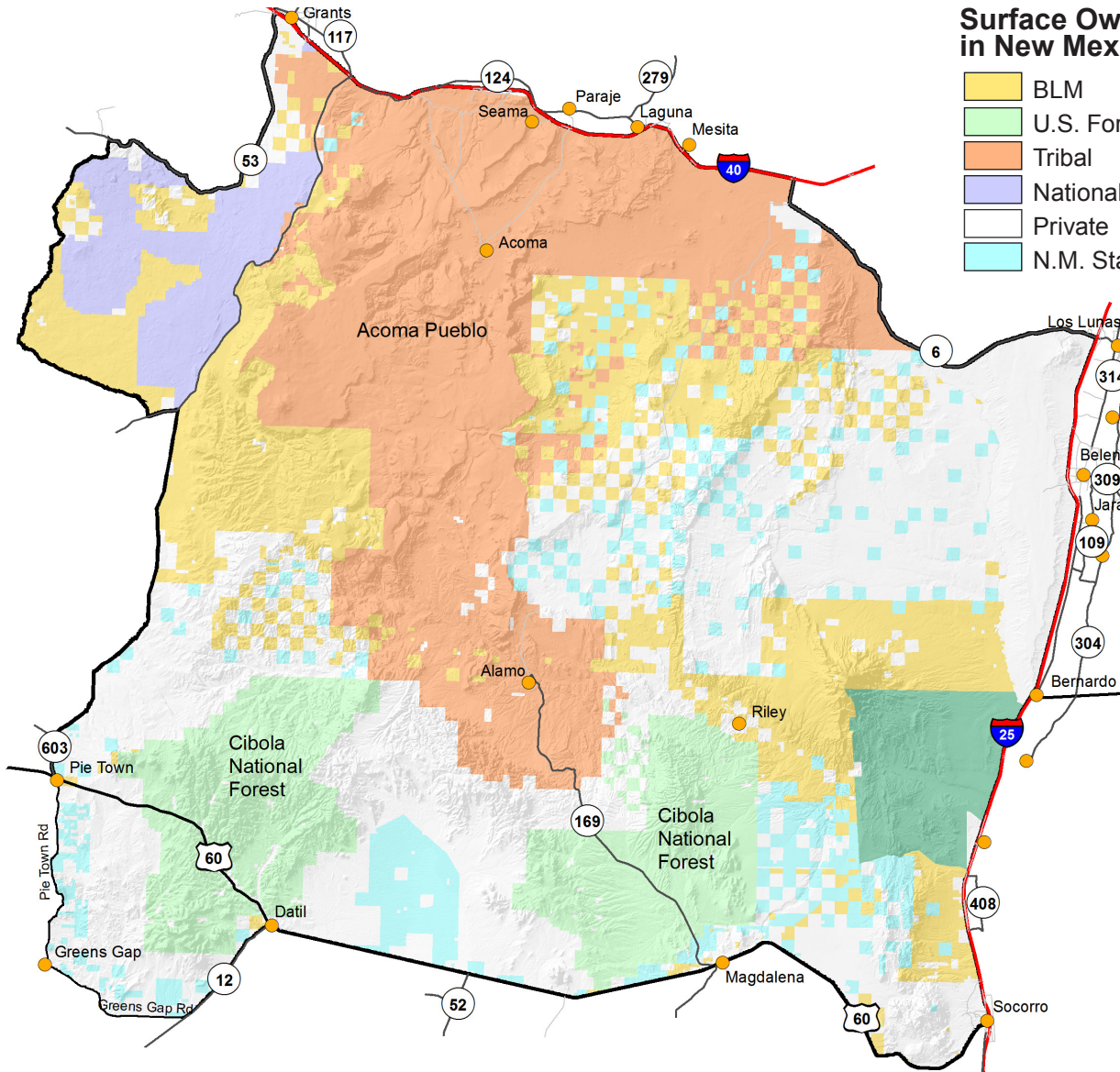
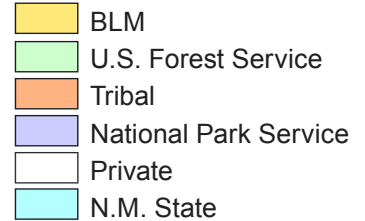


# Game Management Unit 13

New Mexico Department of Game and Fish

*Conserving New Mexico's Wildlife for Future Generations*

## Surface Ownership in New Mexico



GMU 13: Beginning at the junction of NM 53 and I-40 west of Grants and running east along I-40 to its junction with NM 6, then southeast along NM 6 to its junction with I-25 at Los Lunas, then south along I-25 to its junction with US 60 at Socorro, then west along US 60 to its junction with NM 12 at Datil, then southwest along NM 12 to its junction with Catron county road B034, then northwest along Catron county road B034 to its junction with Catron county road B045, then west and north along Catron county road B045 to its junction with Catron county road A056, then north along Catron county road A056 to Pie Town, then north along NM 603 to its junction with Catron county road A083, then north along Catron county road A083 to its junction with Cibola county road 41, then north along Cibola county road 41 to its junction with NM 117, then west along NM 117 to its junction with Cibola county road 42, then north along Cibola county road 42 to its junction with NM 53, then east and north along NM 53 to its junction with I-40 west of Grants.

## Maps available for GMU 13

**BLM:** Acoma Pueblo Quad, Magdalena Quad, Fence Lake Quad, Belen Quad, Quemado Quad, and Socorro Quad. **U.S. FOREST SERVICE:** Cibola National Forest, Magdalena District. These and other maps may be found at the New Mexico Public Lands Information Center: 1-877-851-8946 and <http://plicmapcenter.org/NM/>.