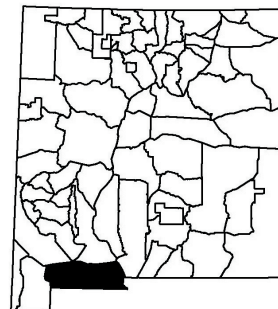




Providing New Mexico
and its wildlife

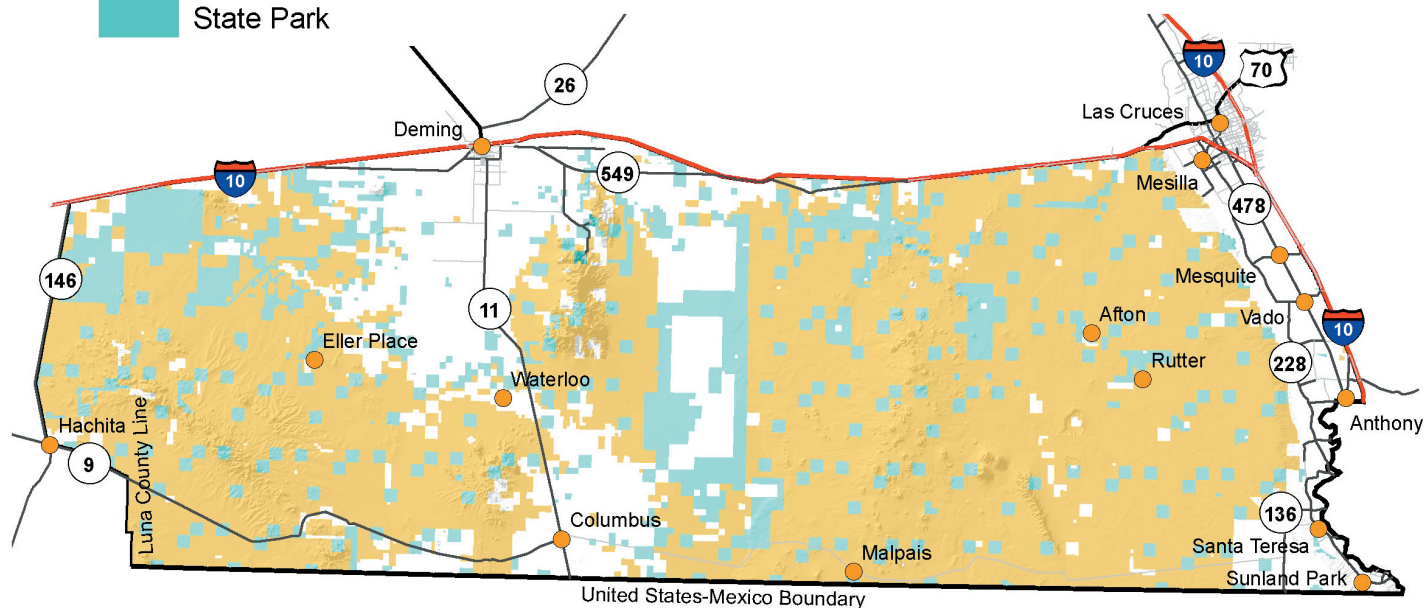
**Year-round
Excellent
Services**

Game Management Unit 25



New Mexico

Surface Ownership



GMU 25: Beginning at the junction of the US/MEX boundary with the west boundary of Luna County and running north along the county line to its intersection with NM 9, then northwest along NM 9 to its intersection with NM 146 (old NM 81) at Hachita, then north along NM 146 (old NM 81) to its junction with I-10, then east and south along I-10 to its intersection with the NM/TX state line, then west and south along the Texas state line to the US/MEX boundary, then west along the international boundary to the west boundary of Luna County.

Maps for GMU 25

BLM Maps: Animas Quad, Columbus Quad, Deming Quad, El Paso Quad, Las Cruces Quad, and Lordsburg Quad.

These and other maps may be found at NM Public Lands Information Center, (877) 851-8946, or visit <http://plmcenter.org/NM/>.