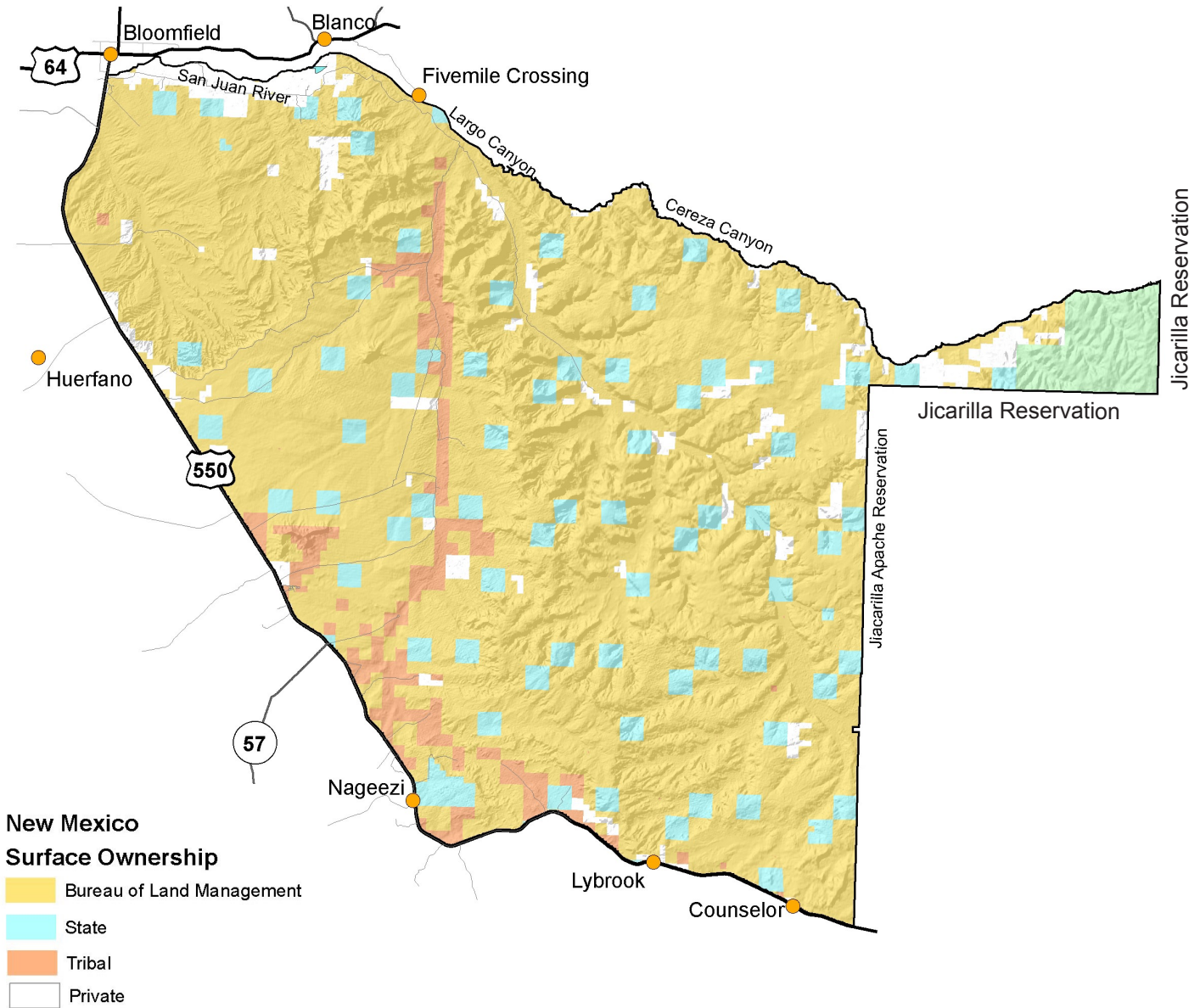
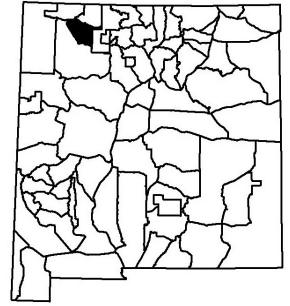




Providing New Mexico  
and its wildlife

**Year-round  
Excellent  
Services**

# Game Management Unit 2C



**GMU 2C:** That portion of GMU 2 south and west of the following line: From the junction of US 550 and the San Juan River at Bloomfield, then east along the San Juan River to its junction with Largo Canyon, then south and east along the central wash of Largo Canyon to its junction with Cereza Canyon, then south and east along the central wash of Cereza Canyon to the Jicarilla Apache Indian Reservation boundary.

#### Maps for GMU 2C

**BLM Maps:** Chaco Canyon Quad and Navajo Reservoir Quad.

These and other maps may be found at Public Lands Interpretive Association, (505)345-9498, or visit <https://publiclands.org/pages/newmexicomaps>.