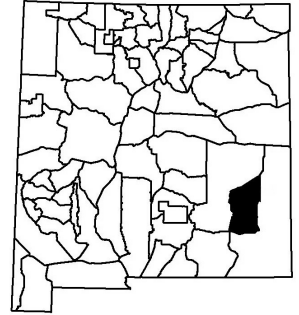




Providing New Mexico
and its wildlife

**Year-round
Excellent
Services**

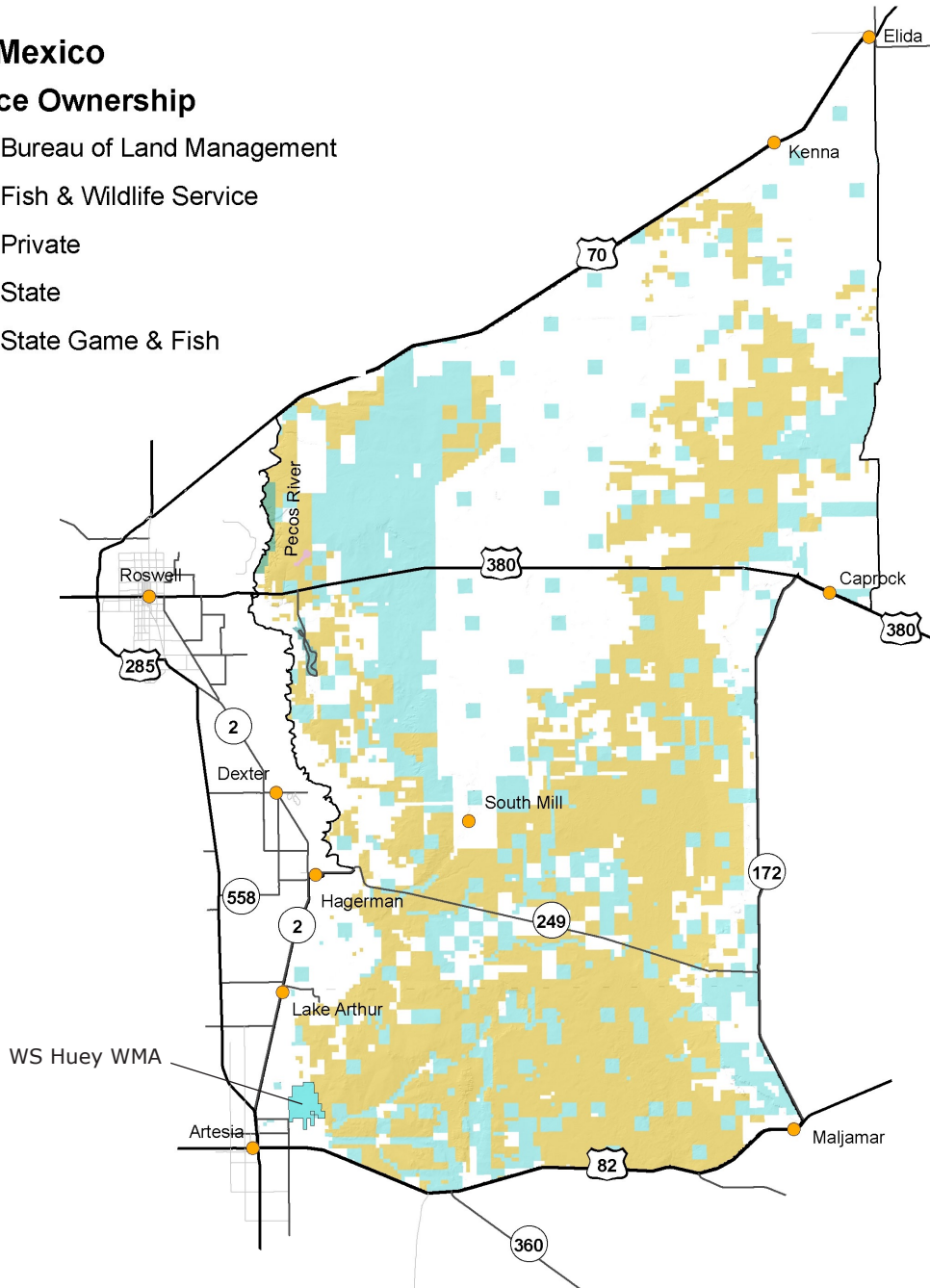
Game Management Unit 33



New Mexico

Surface Ownership

-  Bureau of Land Management
-  Fish & Wildlife Service
-  Private
-  State
-  State Game & Fish



GMU 33: Beginning at the intersection of US 82 and US 285 at Artesia and running north along US 285 to its junction with NM 2, then north on NM 2 to its intersection with NM 249 at Hagerman, then east along NM 249 to its intersection with the Pecos River, then north along the Pecos River to its intersection with US 70, then northeast along US 70 to its intersection with NM 114 at Elida, then south along NM 114 to Roosevelt County Road AK to Reserve Road in Chaves County to Button Mesa Road/Lea County Coad 156 to its intersection with US 380 east of Caprock, then west along US 380 to its intersection with NM 172 west of Caprock, then south on NM 172 to its intersection with NM 249, then south along NM 249 to its intersection with US 82 at Maljamar, then west along US 82 to its intersection with US 285 at Artesia.

Maps for GMU 33

BLM Maps: Artesia Quad, Elida Quad, Hobbs Quad, Roswell Quad, Salt Creek Quad, and Tatum Quad.

These and other maps may be found at NM Public Lands Information Center, (877) 851-8946, or visit <http://plicmapcenter.org/NM/>.