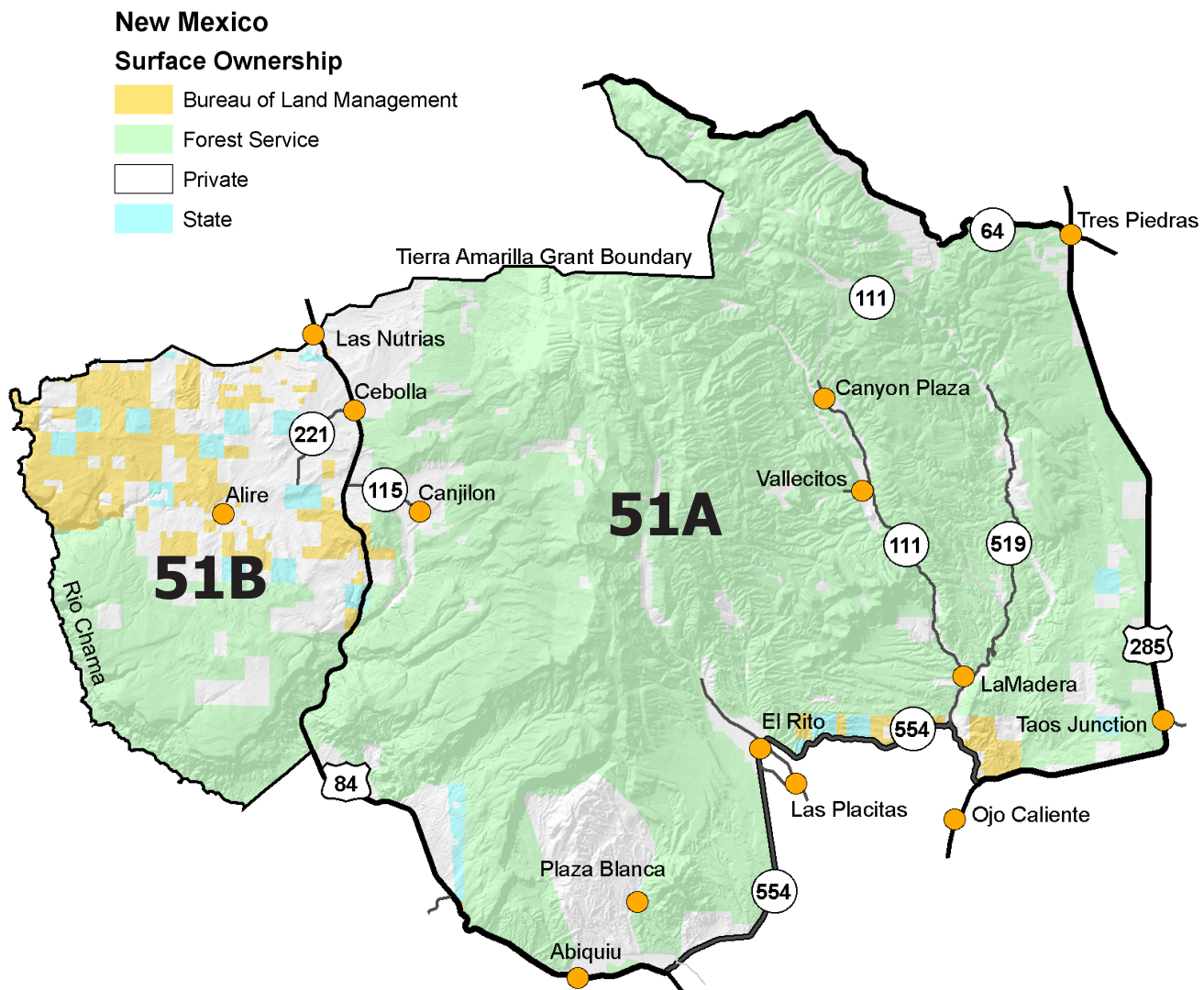
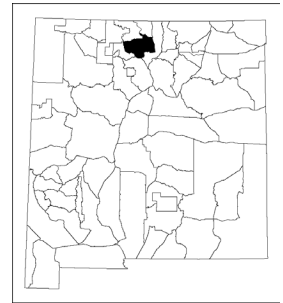




Providing New Mexico
and its wildlife

**Year-round
Excellent
Services**

Game Management Unit 51



GMU 51: Beginning at the intersection of US 64 and the eastern boundary of the Tierra Amarilla grant, running south then west along the Tierra Amarilla grant boundary line to its intersection with the Rio Chama, then south along the Rio Chama to its intersection with the Piedra Lumbre grant boundary line, then northeast along the Piedra Lumbre grant boundary line to its intersection with US 84 northwest of Abiquiu, then southeast along US 84 to its intersection with NM 554 east of Abiquiu, then north and east along NM 554 to its intersection with NM 111, then south along NM 111 to its intersection with US 285 north of Ojo Caliente, then east and north along US 285 to its intersection with US 64 at Tres Piedras, then west along US 64 to its intersection with the Tierra Amarilla grant boundary.

GMU 51A and 51B: The dividing line between GMUs 51A and 51B is US 84.

Maps for GMU 51

BLM Maps: Abiquiu Quad, Chama Quad, Taos Quad, and Wheeler Peak Quad.

US Forest Service Maps: Carson National Forest.

These and other maps may be found at Public Lands Interpretive Association, (505)345-9498, or visit <https://publiclands.org/pages/newmexicomaps>.